



TIMBER SALE MAP

This information provided by authority of Part 525, 1994 PA 451, as amended.

Forest Management Unit Gladwin Management Unit		County Clare County	Mapped By Behrmann	Date 07/24/2023	Page 1	of 3
Township 20N	Range 03W	Section(s) and Subdivision(s) Sec 32 SESE, Sec 33 SESE, Sec 1 NENW, Sec 4 S1/2NW			Scale 1:15,840	

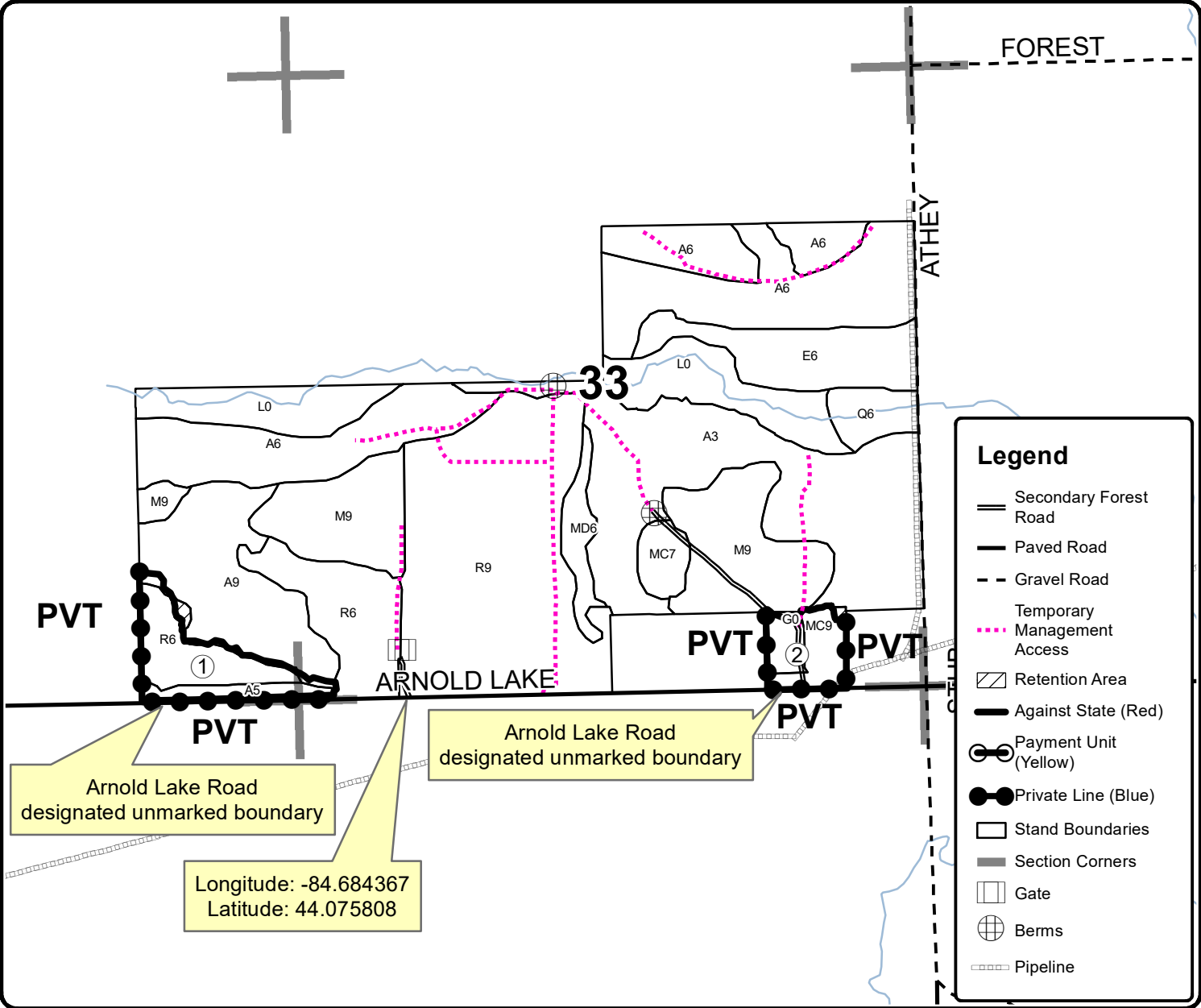
Cover Type				Density	
A = Aspen	H = Hemlock	N = Marsh	U = Upland Brush	0 = Non Stocked	5 = Pole Timber Medium
B = Paper Birch	J = Jack Pine	O = Oak	UM = Upland Mixed	1 = Seedling Sapling Poor	6 = Pole Timber Well
C = Cedar	L = Lowland Brush	P = Lowland Poplar	V = Bog or Marsh	2 = Seedling Sapling Medium	7 = Saw Timber Poor
D = Treed Bog	LM = Lowland Mixed	Q = Mixed Swamp Conifer	W = White Pine	3 = Seedling Sapling Well	8 = Saw Timber Medium
E = Swamp Hdwoods	M = Mpl, Bch, Brch	R = Red Pine	X = Non Stocked	4 = Pole Timber Poor	9 = Saw Timber Well
F = Spruce Fir	MC = Mixed Conifer	S = Black Spruce	Z = Water		
G = Grass	MD = Mixed Deciduous	T = Tamarack			

PU	Acres	PU	Acres
1	17.7	3	4.8
2	10.1	4	67.2

Arnie Lake Alert

Compartment 2

99.8 Acres



Arnold Lake Road designated unmarked boundary

Arnold Lake Road designated unmarked boundary

Longitude: -84.684367
Latitude: 44.075808