

**TIMBER SALE MAP**

This information provided by authority of Part 525, 1994 PA 451, as amended.

Sale Number

**32-002-26**

Date

**11/07/2025**

Forest Management Unit

Gwinn Mgt Unit

County

Marquette

Mapped By: Siler

Cruised By: Siler &amp; Gould

Scale

**1:15,840**

Page

**2**

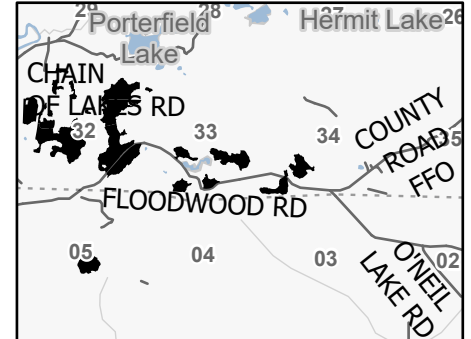
Of

**4**Township  
44N / 45NRange  
29WSection(s) and  
Subdivision(s) NWNW,SW,SE; Sec. 34 SW; Sec. 5 NESW,NWSE;  
Sec. 22 S1/2SW; Sec. 27 N1/2NW; Sec. 3 NWNW; Sec. 32 NW,NE,N1/2SW,SESW,SE; Sec. 33**Cover Type**

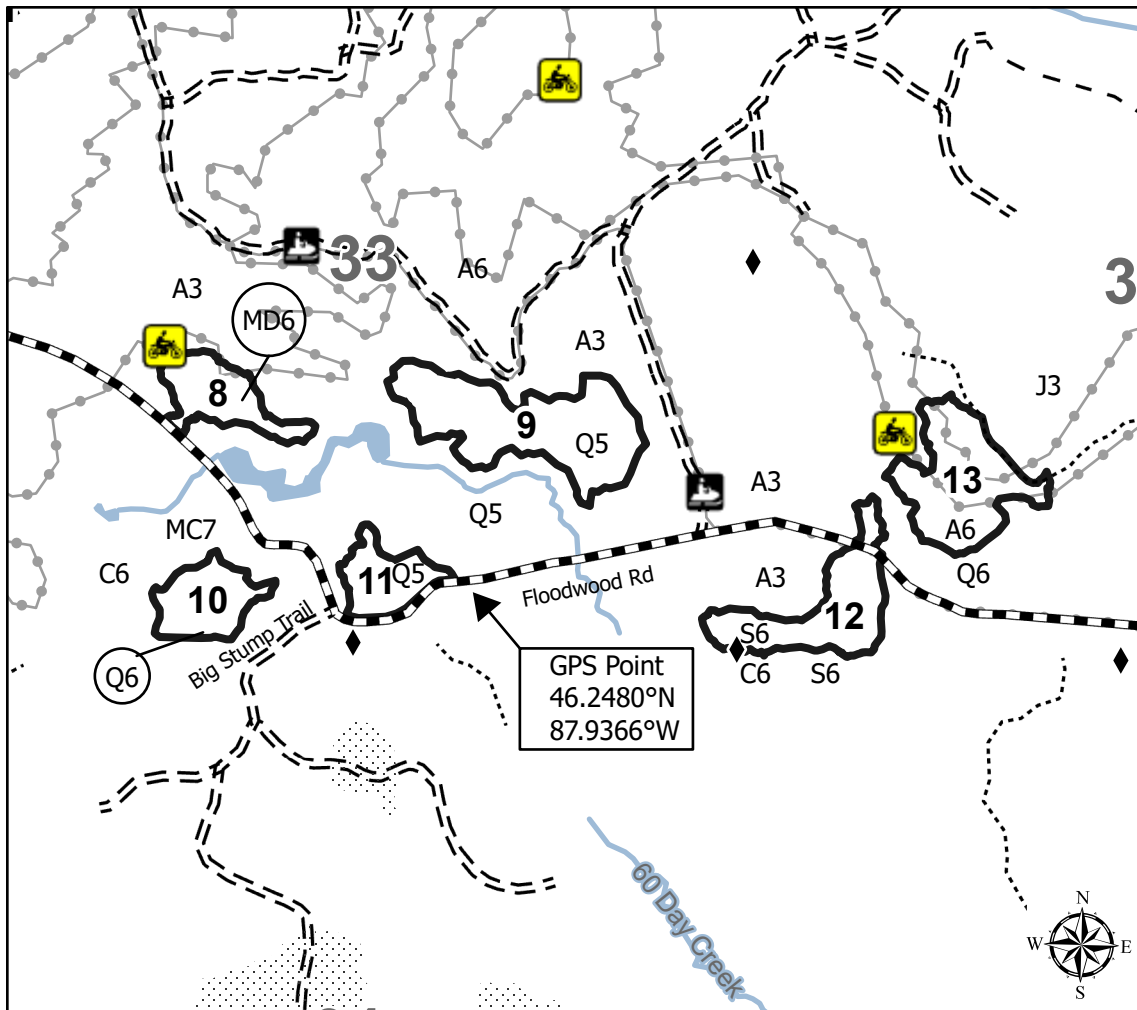
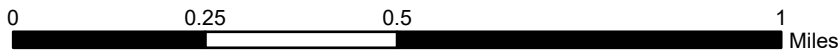
|                     |                         |                         |                        |
|---------------------|-------------------------|-------------------------|------------------------|
| A = Aspen           | J = Jack Pine           | O = Oak                 | U = Upland Brush       |
| B = Paper Birch     | K = Rock                | P = Lowland Poplar      | UM = Upland Mix Forest |
| C = Cedar           | L = Lowland Brush       | Q = Mixed Swamp Conifer | V = Bog or Marsh       |
| D = Treed Bog       | LM = Lowland Mix Forest | R = Red Pine            | W = White Pine         |
| E = Swamp Hardwoods | M = Maple, Beech, Birch | S = Black Spruce        | X = Non Stocked        |
| F = Spruce/Fir      | MC = Mixed Conifer      | T = Tamarack            | Y = Sand               |
| G = Grass           | MD = Mixed Deciduous    |                         | Z = Water              |
| H = Hemlock         | N = Marsh               |                         |                        |

**Density**

|                             |                        |
|-----------------------------|------------------------|
| 0 = Non Stocked             | 5 = Pole Timber Medium |
| 1 = Seedling Sapling Poor   | 6 = Pole Timber Well   |
| 2 = Seedling Sapling Medium | 7 = Saw Timber Poor    |
| 3 = Seedling Sapling Well   | 8 = Saw Timber Medium  |
| 4 = Pole Timber Poor        | 9 = Saw Timber Well    |

**Locator Map 1:100,000**

| Payment Unit Acre |       | Payment Unit Acre |       | Payment Unit Acre |       |
|-------------------|-------|-------------------|-------|-------------------|-------|
| Numbers           | Acres | Numbers           | Acres | Numbers           | Acres |
| 1                 | 14.2  | 7                 | 17.7  | 13                | 13.9  |
| 2                 | 14.3  | 8                 | 7.1   | 14                | 7.7   |
| 3                 | 21.9  | 9                 | 19.7  | 15                | 13.3  |
| 4                 | 22.4  | 10                | 7     | 16                | 6     |
| 5                 | 49.4  | 11                | 5.9   |                   |       |
| 6                 | 32.4  | 12                | 11.7  |                   |       |

**Bear Blaster****264.6 Acres****Compartment:****32245****32243****12008****Legend**

- Against State (Red)
- Recreational Trails
- Forest Access Route
- Administrative Access Only
- Government Gravel/Dirt
- Private Gravel/Dirt
- Survey Grade Corner
- Lakes and Rivers
- Streams
- Nearby Timber Sale

