



TIMBER SALE MAP

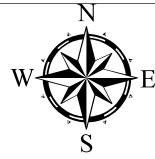
This information provided by authority of Part 525, 1994 PA 451, as amended.

Forest Management Unit Gwinn FMU		County Marquette	Mapped By Rick Hill	Date 10/12/17	Page 1	of 1
Township 46N	Range 26W	Section(s) and Subdivision(s) Sections 22, and 27		Scale 1:15,840		

Cover Type				Density	
A = Aspen	H = Hemlock	N = Marsh	U = Upland Brush	0 = Non Stocked	5 = Pole Timber Medium
B = Paper Birch	J = Jack Pine	O = Oak	UM = Upland Mixed	1 = Seedling Sapling Poor	6 = Pole Timber Well
C = Cedar	L = Lowland Brush	P = Lowland Poplar	V = Bog or Marsh	2 = Seedling Sapling Medium	7 = Saw Timber Poor
D = Treed Bog	LM = Lowland Mixed	Q = Mixed Swamp Conifer	W = White Pine	3 = Seedling Sapling Well	8 = Saw Timber Medium
E = Swamp Hdwoods	M = Mpl, Bch, Brch	R = Red Pine	X = Non Stocked	4 = Pole Timber Poor	9 = Saw Timber Well
F = Spruce Fir	MC = Mixed Conifer	S = Black Spruce	Z = Water		
G = Grass	MD = Mixed Deciduous	T = Tamarack			

PU	Acres
1	72.6
2	66.8
3	07.3

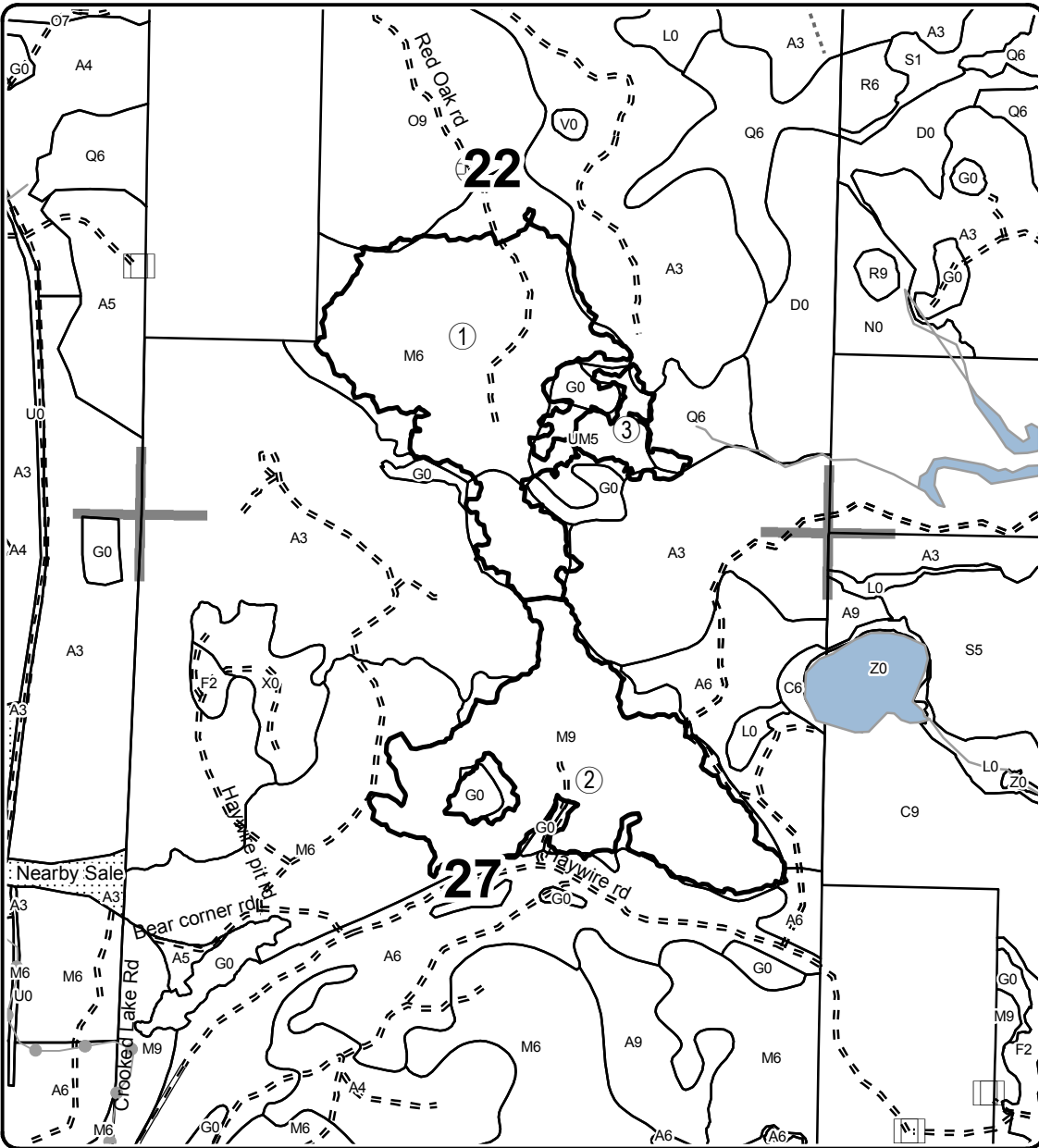
Triple C Compartment 39 146.7 Acres



Legend

- Against State (Red)
- ⋯ Nearby Timber Sale
- ▬ Section Corners
- Stand Boundaries
- ▬ Gravel Roads
- == Poor Dirt Roads
- Closed Roads

QR Code for PDF Maps



Locator Map
1:200,000

