



TIMBER SALE MAP

This information provided by authority of Part 525, 1994 PA 451, as amended.

Forest Management Unit Gwinn		County Marquette	Mapped By McDonald	Date 03/16/2017	Page 1	of 1
Township 44N	Range 25W	Section(s) and Subdivision(s) Sections 19, 20, 29		Scale 1:15,840		

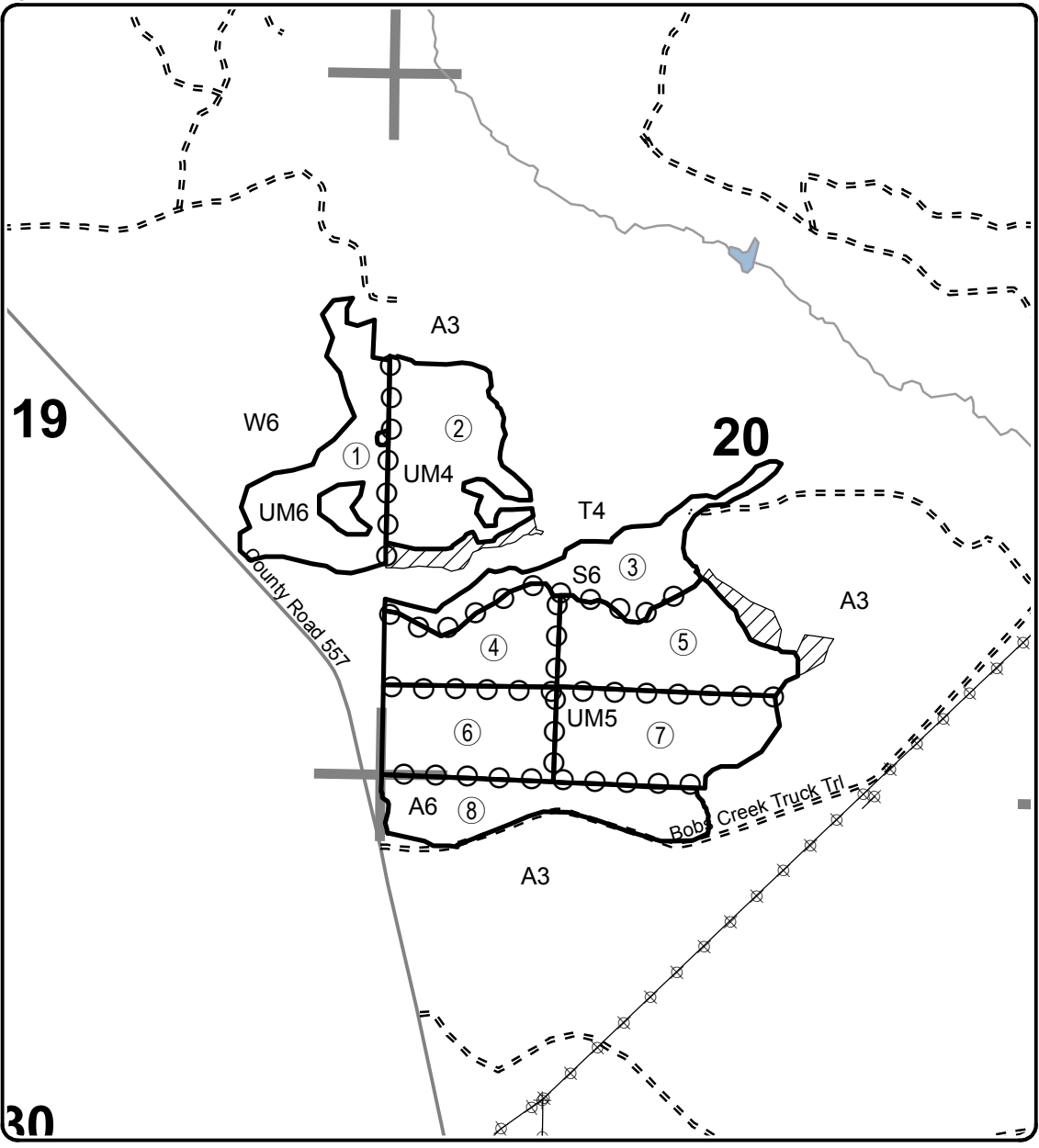
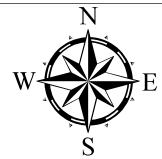
Cover Type				Density	
A = Aspen	H = Hemlock	N = Marsh	U = Upland Brush	0 = Non Stocked	5 = Pole Timber Medium
B = Paper Birch	J = Jack Pine	O = Oak	UM = Upland Mixed	1 = Seedling Sapling Poor	6 = Pole Timber Well
C = Cedar	L = Lowland Brush	P = Lowland Poplar	V = Bog or Marsh	2 = Seedling Sapling Medium	7 = Saw Timber Poor
D = Treed Bog	LM = Lowland Mixed	Q = Mixed Swamp Conifer	W = White Pine	3 = Seedling Sapling Well	8 = Saw Timber Medium
E = Swamp Hdwoods	M = Mpl, Bch, Brch	R = Red Pine	X = Non Stocked	4 = Pole Timber Poor	9 = Saw Timber Well
F = Spruce Fir	MC = Mixed Conifer	S = Black Spruce	Z = Water		
G = Grass	MD = Mixed Deciduous	T = Tamarack			

PU	Acres	PU	Acres
1	24.6	6	20.5
2	26.1	7	24.3
3	19.4	8	20.3
4	17.2		
5	24.1		

Bob's West SBW

Compartment 44, 45, 47

176.5 Acres



Legend

- Against State (Red)
- ○ Payment Unit (purple or red)
- ● Private Line (Blue)
- Section Corners
- ▨ Retention Area
- ⚡ Powerline
- Lakes and Rivers
- Highway
- Paved Roads
- Gravel Roads
- - - Poor Dirt Roads
- ⋯ Closed Roads

Locator Map
1:200,000

