



TIMBER SALE MAP

This information provided by authority of Part 525, 1994 PA 451, as amended.

Forest Management Unit Gwinn		County Marquette	Mapped By Holodnick	Date 4/6/20	Page 1	of 2
Township 44N	Range 23W	Section(s) and Subdivision(s) Sec 23: S1/2 NENE Sec 35: N1/2 S1/2 Sec 26: SE1/4 SWNE SWSE N1/2		Scale 1:15,840		

Cover Type				Density			
A = Aspen	H = Hemlock	N = Marsh	U = Upland Brush	0 = Non Stocked	5 = Pole Timber Medium		
B = Paper Birch	J = Jack Pine	O = Oak	UM = Upland Mixed	1 = Seedling Sapling Poor	6 = Pole Timber Well		
C = Cedar	L = Lowland Brush	P = Lowland Poplar	V = Bog or Marsh	2 = Seedling Sapling Medium	7 = Saw Timber Poor		
D = Tread Bog	LM = Lowland Mixed	Q = Mixed Swamp Conifer	W = White Pine	3 = Seedling Sapling Well	8 = Saw Timber Medium		
E = Swamp Hdwoods	M = Mpl, Bch, Brch	R = Red Pine	X = Non Stocked	4 = Pole Timber Poor	9 = Saw Timber Well		
F = Spruce Fir	MC = Mixed Conifer	S = Black Spruce	Z = Water				
G = Grass	MD = Mixed Deciduous	T = Tamarack					

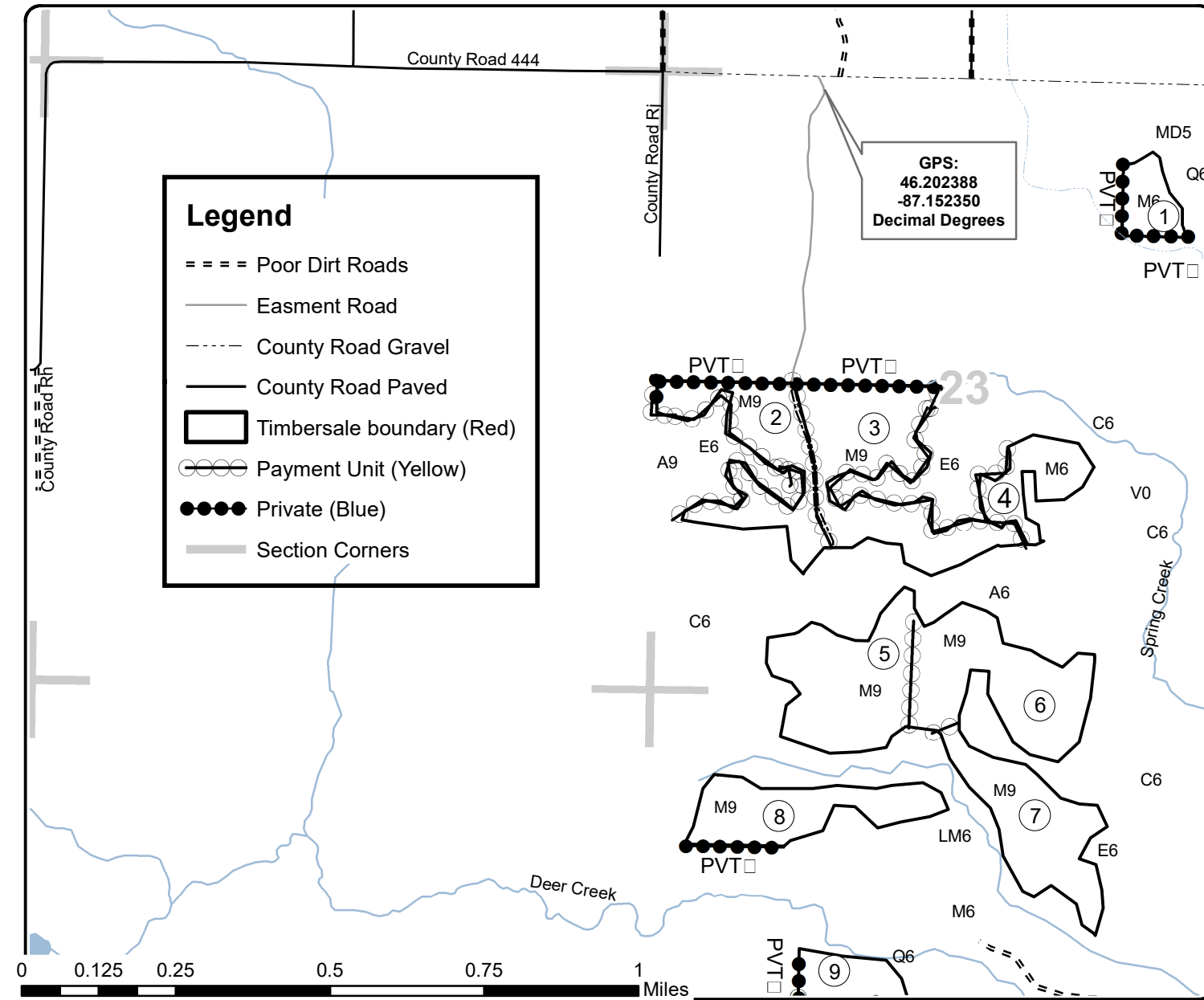
PU Acres

1	6.6	7	23	13	18.8
2	23.9	8	18.8		
3	32.7	9	37		
4	10.4	10	25.6		
5	27.2	11	48.9		
6	27.8	12	39.1		

C10 Contract Marking HWD

Compartment 10

339.8 Acres



Legend

- ==== Poor Dirt Roads
- Easment Road
- County Road Gravel
- County Road Paved
- Timbersale boundary (Red)
- Payment Unit (Yellow)
- Private (Blue)
- Section Corners

GPS:
46.202388
-87.152350
Decimal Degrees

