



Sale Number	Year
32-018	21

# TIMBER SALE MAP

This information provided by authority of Part 525, 1994 PA 451, as amended.

Forest Management Unit		County	Mapped By	Date	Page of	
Gwinn Management Unit		Marquette	Brolin	08/03/2021	1	1
Township	Range	Section(s) and Subdivision(s)			Scale	
43, 44N	26W	Sections 29, 31, 32, 33 (44N-26W) / 4 (43N-26W)			1:31,680	

### Cover Type

A = Aspen	H = Hemlock	N = Marsh	U = Upland Brush
B = Paper Birch	J = Jack Pine	O = Oak	UM = Upland Mixed
C = Cedar	L = Lowland Brush	P = Lowland Poplar	V = Bog or Marsh
D = Treed Bog	LM = Lowland Mixed	Q = Mixed Swamp Conifer	W = White Pine
E = Swamp Hdwoods	M = Mpl, Bch, Brch	R = Red Pine	X = Non Stocked
F = Spruce Fir	MC = Mixed Conifer	S = Black Spruce	Z = Water
G = Grass	MD = Mixed Deciduous	T = Tamarack	

### Density

0 = Non Stocked	5 = Pole Timber Medium
1 = Seedling Sapling Poor	6 = Pole Timber Well
2 = Seedling Sapling Medium	7 = Saw Timber Poor
3 = Seedling Sapling Well	8 = Saw Timber Medium
4 = Pole Timber Poor	9 = Saw Timber Well

### PU Acres

PU	Acres	PU	Acres
1	18.5	8	22.7
2	12.3	9	19.8
3	12.7	10	12.9
4	18.9	11	24.8
5	12.6	12	8.5
6	13.0	13	15.6
7	26.5		

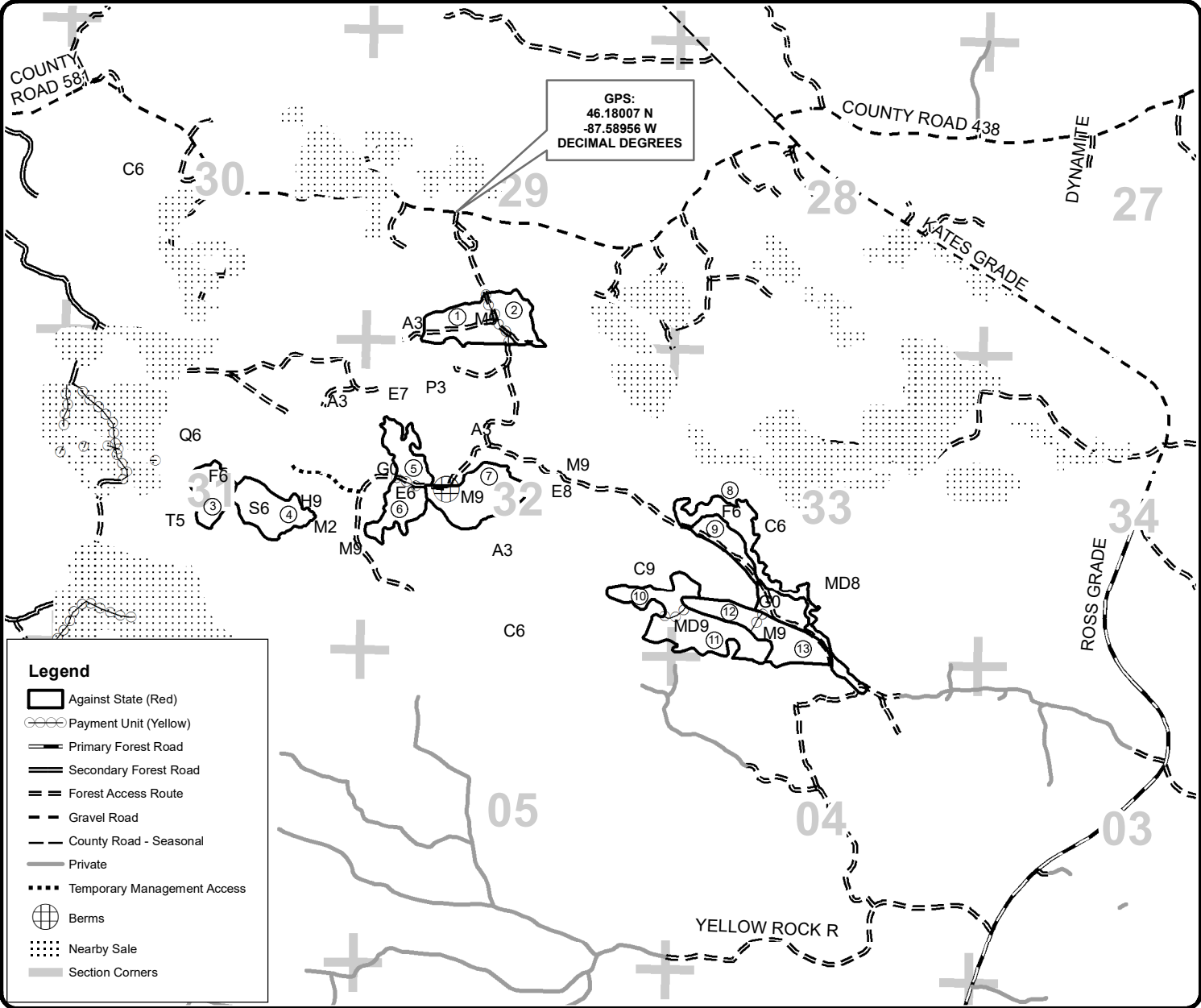
## Centerfield

### Compartment 58 and 59

### 218.8 Acres



QR code for PDF Maps app



#### Legend

- Against State (Red)
- Payment Unit (Yellow)
- Primary Forest Road
- Secondary Forest Road
- Forest Access Route
- Gravel Road
- County Road - Seasonal
- Private
- Temporary Management Access
- Berms
- Nearby Sale
- Section Corners

