



TIMBER SALE MAP

This information provided by authority of Part 525, 1994 PA 451, as amended.

Forest Management Unit		County	Mapped By	Date	Page of	
Gwinn Management Unit		Marquette	Brolin	04/26/2021	1	1
Township	Range	Section(s) and Subdivision(s)			Scale	
44 N	26 W	Sections 28, 33, 34			1:15,840	

Cover Type				Density	
A = Aspen	H = Hemlock	N = Marsh	U = Upland Brush	0 = Non Stocked	5 = Pole Timber Medium
B = Paper Birch	J = Jack Pine	O = Oak	UM = Upland Mixed	1 = Seedling Sapling Poor	6 = Pole Timber Well
C = Cedar	L = Lowland Brush	P = Lowland Poplar	V = Bog or Marsh	2 = Seedling Sapling Medium	7 = Saw Timber Poor
D = Treed Bog	LM = Lowland Mixed	Q = Mixed Swamp Conifer	W = White Pine	3 = Seedling Sapling Well	8 = Saw Timber Medium
E = Swamp Hdwoods	M = Mpl, Bch, Brch	R = Red Pine	X = Non Stocked	4 = Pole Timber Poor	9 = Saw Timber Well
F = Spruce Fir	MC = Mixed Conifer	S = Black Spruce	Z = Water		
G = Grass	MD = Mixed Deciduous	T = Tamarack			

PU	Acres	PU	Acres
1	11.7	6	11.4
2	17.5	7	16.6
3	19.9	8	25.5
4	18.6	9	17.4
5	17.3		

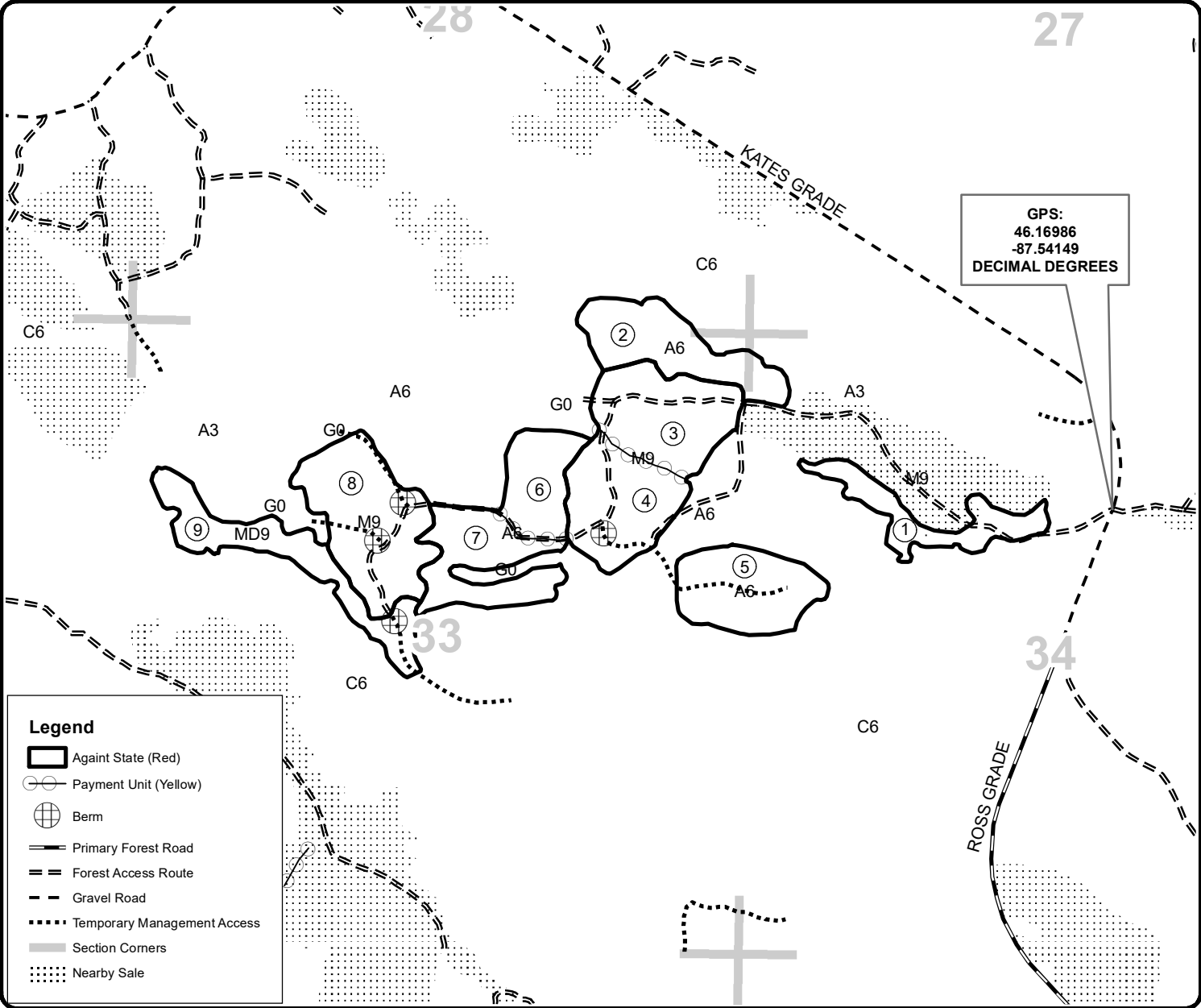
Compartment 59 East

Compartment 53 and 59

155.9 Acres



QR code for PDF Map app



GPS:
46.16986
-87.54149
DECIMAL DEGREES

Legend	
	Against State (Red)
	Payment Unit (Yellow)
	Bern
	Primary Forest Road
	Forest Access Route
	Gravel Road
	Temporary Management Access
	Section Corners
	Nearby Sale

