



TIMBER SALE MAP

This information provided by authority of Part 525, 1994 PA 451, as amended.

Forest Management Unit Gwinn		County Marquette	Mapped By Brolin	Date 09/18/2020	Page 1	of 1
Township 45N, 46N	Range 24W	Section(s) and Subdivision(s) Section 3 in 45N, Sections 31 and 34 in 46N		Scale 1:31,680		

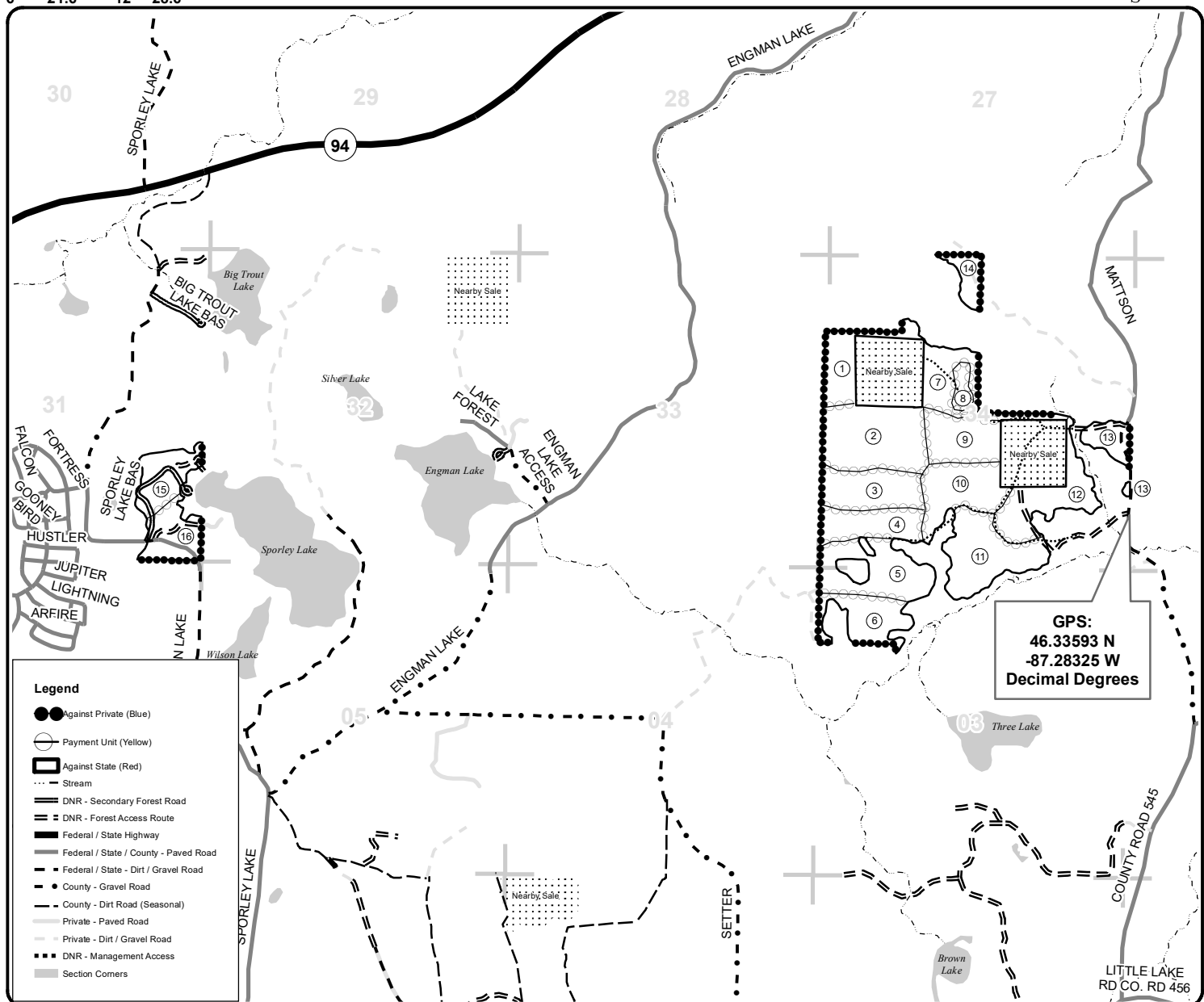
Cover Type				Density	
A = Aspen	H = Hemlock	N = Marsh	U = Upland Brush	0 = Non Stocked	5 = Pole Timber Medium
B = Paper Birch	J = Jack Pine	O = Oak	UM = Upland Mixed	1 = Seedling Sapling Poor	6 = Pole Timber Well
C = Cedar	L = Lowland Brush	P = Lowland Poplar	V = Bog or Marsh	2 = Seedling Sapling Medium	7 = Saw Timber Poor
D = Tread Bog	LM = Lowland Mixed	Q = Mixed Swamp Conifer	W = White Pine	3 = Seedling Sapling Well	8 = Saw Timber Medium
E = Swamp Hdwoods	M = Mpl, Bch, Brch	R = Red Pine	X = Non Stocked	4 = Pole Timber Poor	9 = Saw Timber Well
F = Spruce Fir	MC = Mixed Conifer	S = Black Spruce	Z = Water		
G = Grass	MD = Mixed Deciduous	T = Tamarack			

PU Acres	PU Acres	PU Acres
1 19.7	7 23.4	13 10.3
2 44.2	8 5	14 8.7
3 26.1	9 23	15 18.9
4 21.8	10 28.4	16 18.1
5 32.7	11 36.1	
6 21.6	12 28.6	

Heinous Terrainous Mapleous Compartment 281 366.6 Acres



QR code for PDF Map app



GPS:
46.33593 N
-87.28325 W
Decimal Degrees

