

**TIMBER SALE MAP**

This information provided by authority of Part 525, 1994 PA 451, as amended.

Sale Number

32-021-25

Date

09/03/2025

Forest Management Unit

Gwinn Mgt Unit

County

Marquette

Mapped By: Siler

Cruised By: Siler & Gould

Scale

1:15,840

Page

1

Of

1

Township

45N

Range

27W

Section(s) and

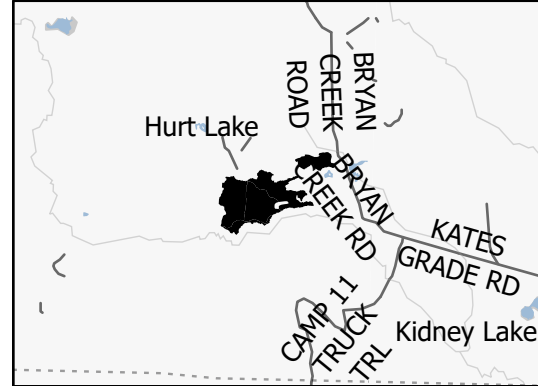
Subdivision(s) Sec. 30 S1/2NW,N1/2NE,SWNE,N1/2SW; Sec. 30 SWSW,NWSE;

Cover Type

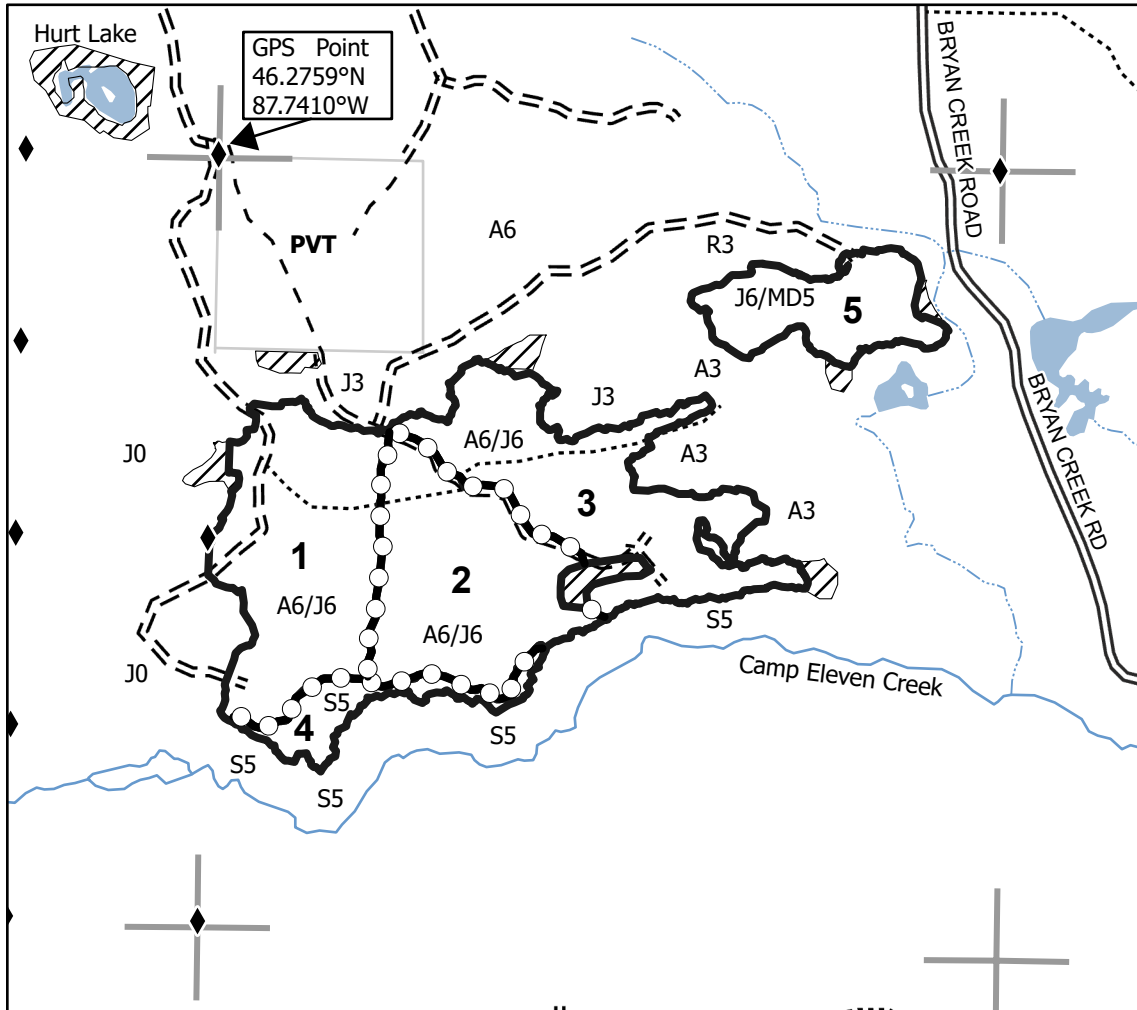
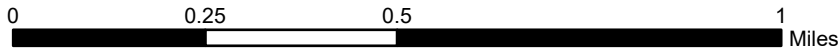
A = Aspen	J = Jack Pine	O = Oak	U = Upland Brush
B = Paper Birch	K = Rock	P = Lowland Poplar	UM = Upland Mix Forest
C = Cedar	L = Lowland Brush	Q = Mixed Swamp Conifer	V = Bog or Marsh
D = Treed Bog	LM = Lowland Mix Forest	R = Red Pine	W = White Pine
E = Swamp Hardwoods	M = Maple, Beech, Birch	S = Black Spruce	X = Non Stocked
F = Spruce/Fir	MC = Mixed Conifer	T = Tamarack	Y = Sand
G = Grass	MD = Mixed Deciduous	Z = Water	
H = Hemlock	N = Marsh		

Density

0 = Non Stocked	5 = Pole Timber Medium
1 = Seedling Sapling Poor	6 = Pole Timber Well
2 = Seedling Sapling Medium	7 = Saw Timber Poor
3 = Seedling Sapling Well	8 = Saw Timber Medium
4 = Pole Timber Poor	9 = Saw Timber Well

Locator Map 1:100,000

Payment Unit Number	Acres
1	45.2
2	40.5
3	43.8
4	9.1
5	19.5

Hodgepodge**Compartment 32269****158.1 Acres****Legend**

- Against State (Red)
- Payment Unit (Yellow)
- State Boundary
- Special Protection Area
- Lakes and Rivers
- Intermittent Stream
- Perennial River
- Primary Forest Road
- Forest Access Route
- Administrative Access Only
- Private Gravel/Dirt
- Survey Grade Corner
- Section Corner

