



TIMBER SALE MAP

This information provided by authority of Part 525, 1994 PA 451, as amended.

Forest Management Unit	County	Mapped By	Date	Page	of
Gwinn Management Unit	Marquette	Brolin	09/25/2022	1	1
Township	Range	Section(s) and Subdivision(s)	Scale		
45N	23W	Sections 20, 21, 22, and 28	1:15,840		

Cover Type				Density	
A = Aspen	H = Hemlock	N = Marsh	U = Upland Brush	0 = Non Stocked	5 = Pole Timber Medium
B = Paper Birch	J = Jack Pine	O = Oak	UM = Upland Mixed	1 = Seedling Sapling Poor	6 = Pole Timber Well
C = Cedar	L = Lowland Brush	P = Lowland Poplar	V = Bog or Marsh	2 = Seedling Sapling Medium	7 = Saw Timber Poor
D = Treed Bog	LM = Lowland Mixed	Q = Mixed Swamp Conifer	W = White Pine	3 = Seedling Sapling Well	8 = Saw Timber Medium
E = Swamp Hdwoods	M = Mpl, Bch, Brch	R = Red Pine	X = Non Stocked	4 = Pole Timber Poor	9 = Saw Timber Well
F = Spruce Fir	MC = Mixed Conifer	S = Black Spruce	Z = Water		
G = Grass	MD = Mixed Deciduous	T = Tamarack			

PU Acres	PU Acres
1 6.9	5 13.5
2 15.4	6 17.7
3 8.1	7 34.4
4 23.1	8 26.0

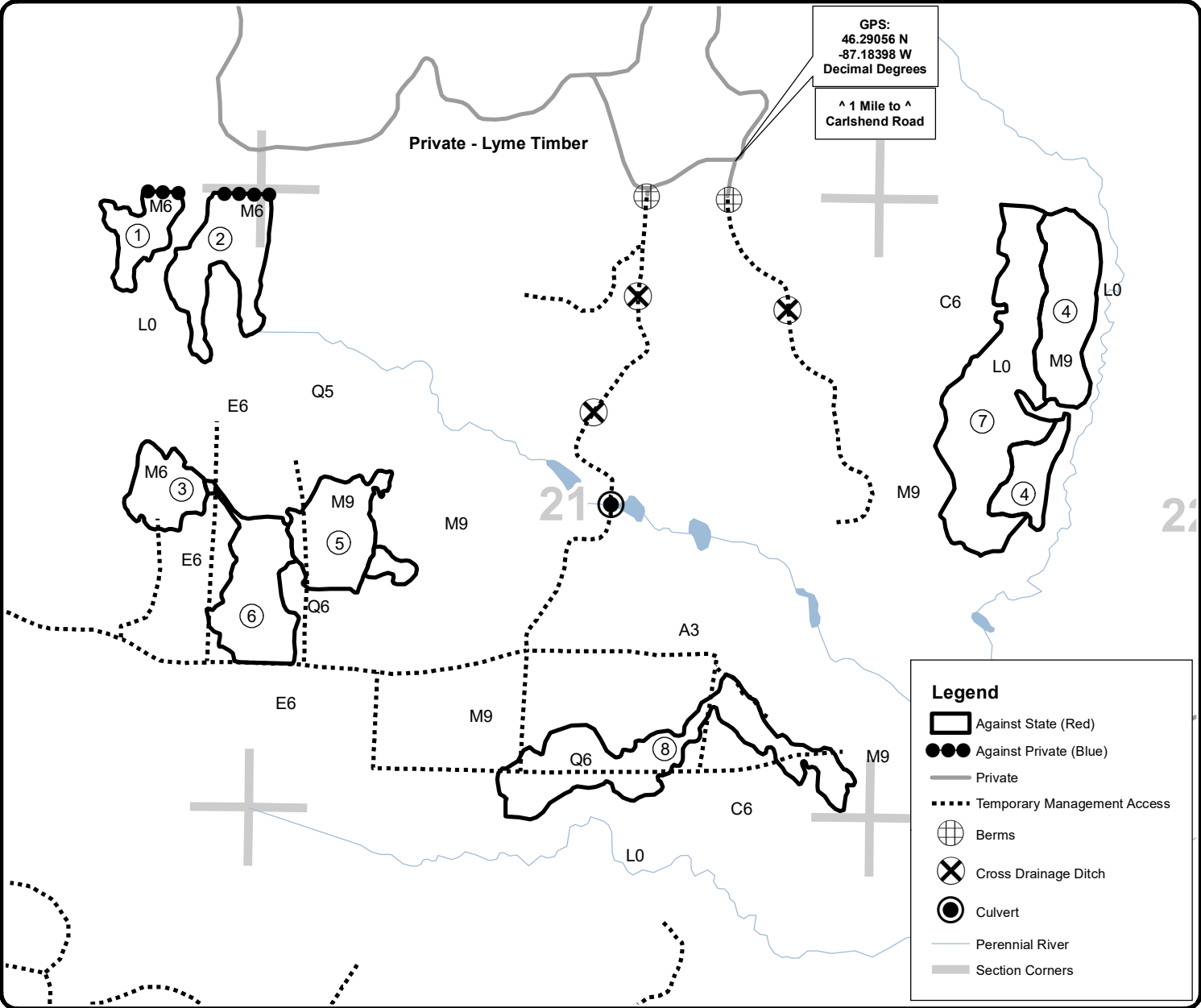
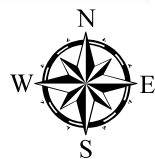
Huber North

Compartments 2 and 3

145.1 Acres



QR code for PDF Maps app



Legend	
	Against State (Red)
	Against Private (Blue)
	Private
	Temporary Management Access
	Berms
	Cross Drainage Ditch
	Culvert
	Perennial River
	Section Corners

