



TIMBER SALE MAP

This information provided by authority of Part 525, 1994 PA 451, as amended.

Sale Number 32-011-23	Date 04/06/2023
---------------------------------	---------------------------

Forest Management Unit Gwinn Mgt Unit	County Marquette	Mapped By: Hill	Scale 1:15,840	Page 1	Of 1
Cruised By: Hill, Brolin, Gould					

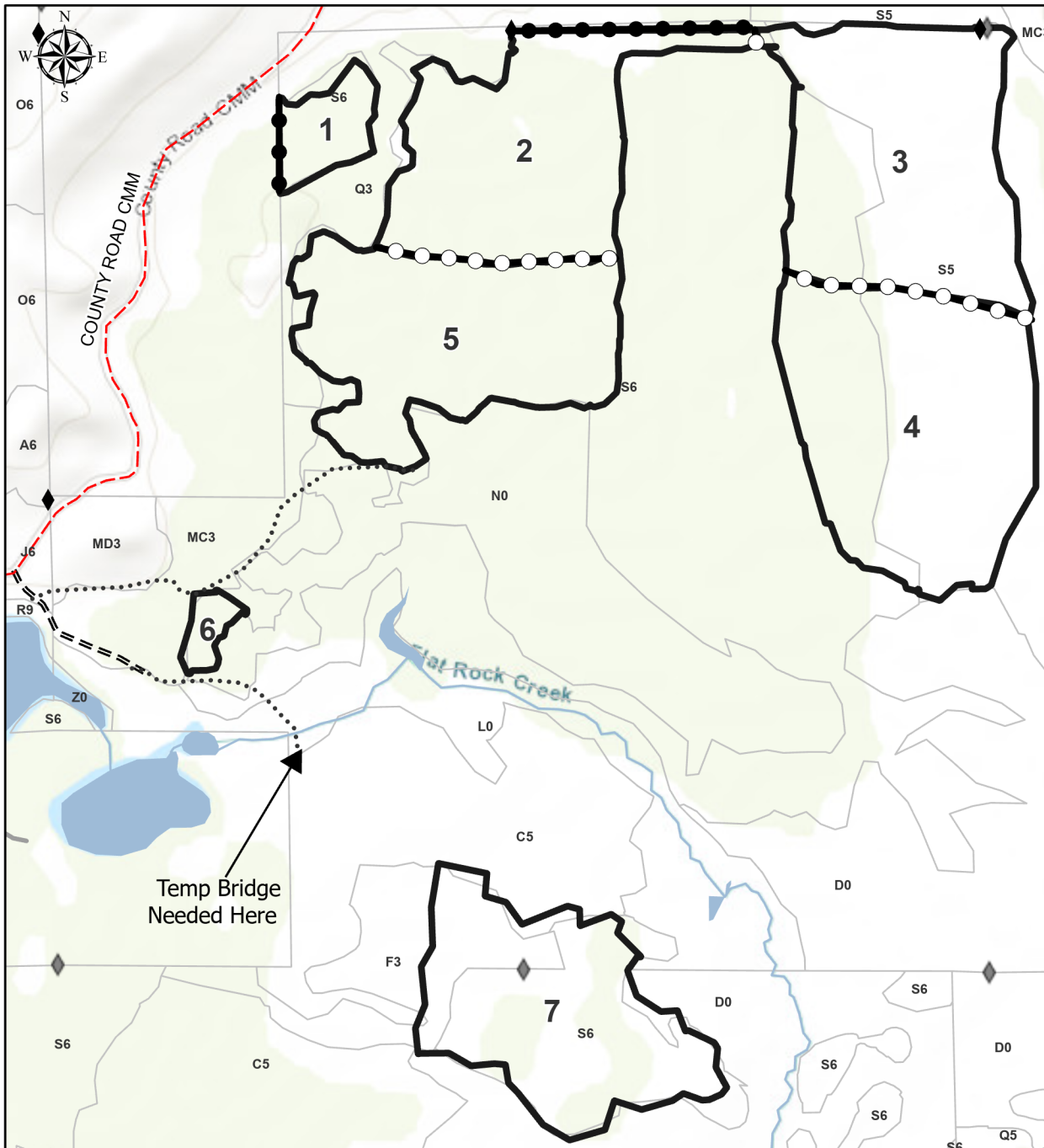
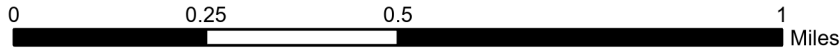
Township 45N	Range 28W	Section(s) and Subdivision(s)	Sec. 4 W1/2NW,NWSW; Sec. 5 E1/2NW,NE,NWSW,SESW,NESE,SWSE; Sec. 8 NENW,NWNE;		
-----------------	--------------	----------------------------------	---	--	--

Cover Type			
A = Aspen	J = Jack Pine	O = Oak	U = Upland Brush
B = Paper Birch	K = Rock	P = Lowland Poplar	UM = Upland Mix Forest
C = Cedar	L = Lowland Brush	Q = Mixed Swamp Conifer	V = Bog or Marsh
D = Treed Bog	LM = Lowland Mix Forest	R = Red Pine	W = White Pine
E = Swamp Hardwoods	M = Maple, Beech, Birch	S = Black Spruce	X = Non Stocked
F = Spruce/Fir	MC = Mixed Conifer	T = Tamarack	Y = Sand
G = Grass	MD = Mixed Deciduous	Z = Water	
H = Hemlock	N = Marsh		

Density	
0 = Non Stocked	5 = Pole Timber Medium
1 = Seedling Sapling Poor	6 = Pole Timber Well
2 = Seedling Sapling Medium	7 = Saw Timber Poor
3 = Seedling Sapling Well	8 = Saw Timber Medium
4 = Pole Timber Poor	9 = Saw Timber Well

Snowtrekker Spruce

205.2 Acres



Legend

- Against State (Red)
 - Payment Unit (Yellow)
 - Private Line (Blue)
 - Primary Forest Road
 - Secondary Forest Road
 - Forest Access Route
 - Paved Road
 - Gravel Road
 - County Road - Seasonal
 - Private Road
 - Survey Grade Corner
 - Field Grade Corner
 - Perennial River
 - Lakes and Rivers
 - DNR - Management Access
 - Stand
- Use QR Code to open Map in App

PU #	Acres	PU #	Acres
1	5.9	5	37.4
2	35.4	6	2.2
3	42.9	7	34.3
4	47.1		

Temp Bridge Needed Here