



TIMBER SALE MAP

This information provided by authority of Part 525, 1994 PA 451, as amended.

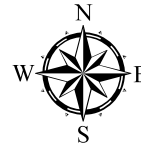
Forest Management Unit Gwinn		County Marquette	Mapped By R. Smith	Date 09/01/2018	Page 1	of 2
Township 43N	Range 25W	Section(s) and Subdivision(s) 4, 5, 6		Scale 1:15,840		
Cover Type				Density		
A = Aspen	H = Hemlock	N = Marsh	U = Upland Brush	0 = Non Stocked	5 = Pole Timber Medium	
B = Paper Birch	J = Jack Pine	O = Oak	UM = Upland Mixed	1 = Seedling Sapling Poor	6 = Pole Timber Well	
C = Cedar	L = Lowland Brush	P = Lowland Poplar	V = Bog or Marsh	2 = Seedling Sapling Medium	7 = Saw Timber Poor	
D = Treed Bog	LM = Lowland Mixed	Q = Mixed Swamp Conifer	W = White Pine	3 = Seedling Sapling Well	8 = Saw Timber Medium	
E = Swamp Hdwoods	M = Mpl, Bch, Brch	R = Red Pine	X = Non Stocked	4 = Pole Timber Poor	9 = Saw Timber Well	
F = Spruce Fir	MC = Mixed Conifer	S = Black Spruce	Z = Water			
G = Grass	MD = Mixed Deciduous	T = Tamarack				

PU	Acres	PU	Acres
1	59.1	4	20.5
2	33.1	5	40.2
3	28.8	6	15

Tick Torture

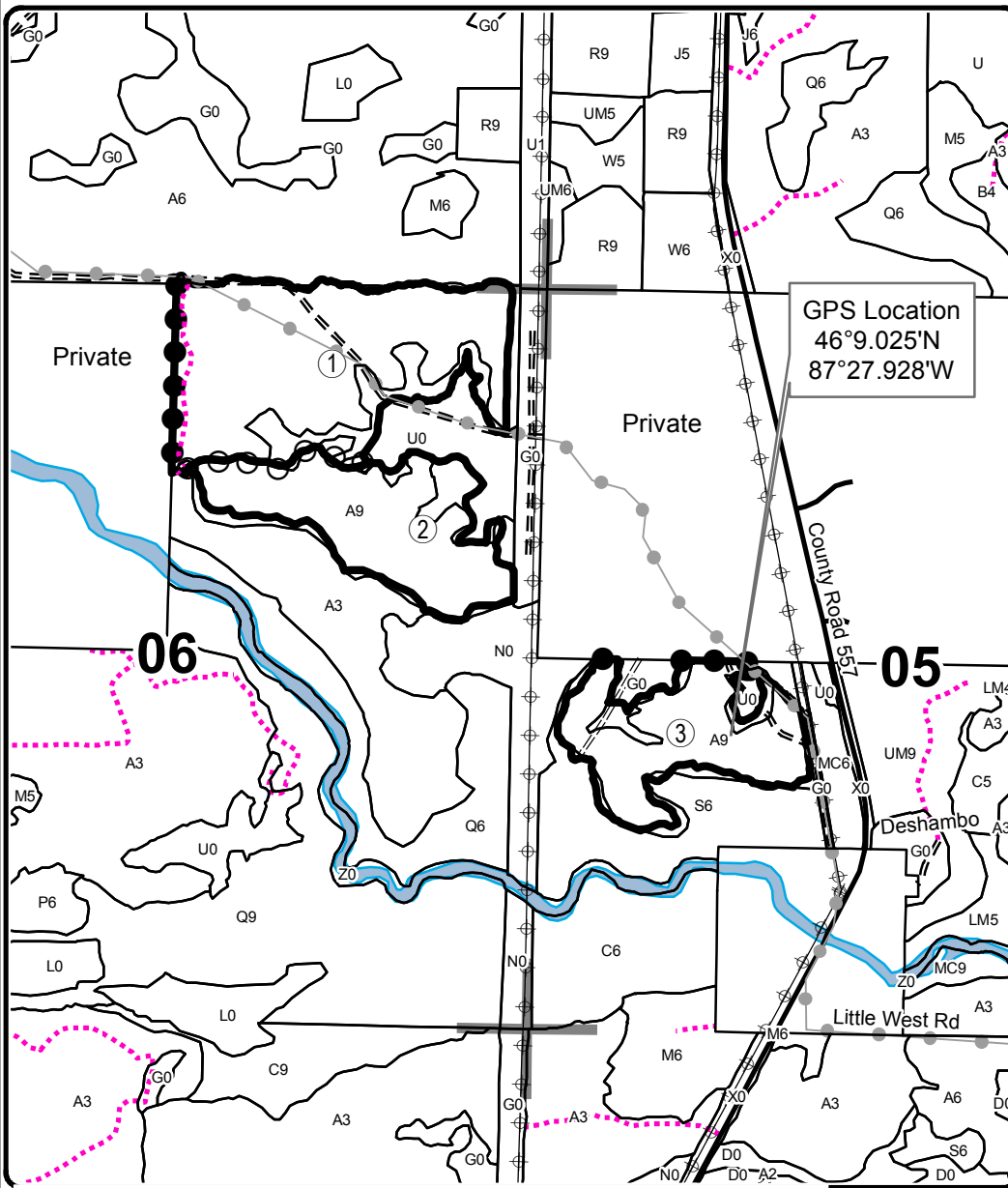
Compartment 65

196.7 Acres



Legend

- ○ Against State (Red)
- ○ Payment Unit (Yellow)
- ● Private Line (Blue)
- Stand Boundaries
- == Forest Access Route
- Paved Road
- Perennial River
- Lakes and Rivers
- Recreational Trail
- ⊕ Powerline



Locator Map

1:200,000

