



TIMBER SALE MAP

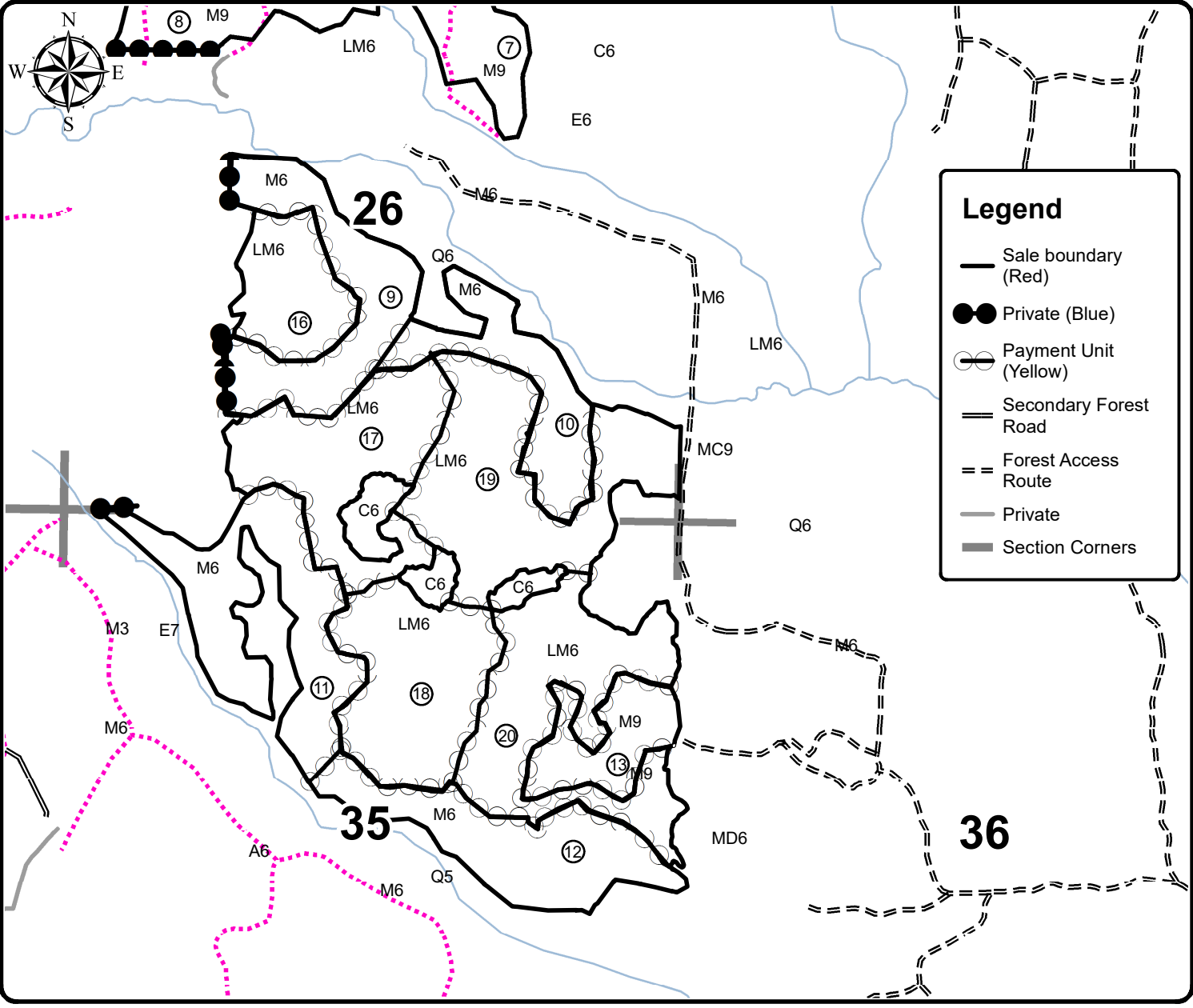
This information provided by authority of Part 525, 1994 PA 451, as amended.

Forest Management Unit		County	Mapped By		Date	Page		of
Gwinn Management Unit		Marquette County	Holodnick		04/23/21	2	2	
Township	Range	Section(s) and Subdivision(s)			Scale			
44N	23W	Sections 23, 26, and 35			1:15,840			

Cover Type				Density	
A = Aspen	H = Hemlock	N = Marsh	U = Upland Brush	0 = Non Stocked	5 = Pole Timber Medium
B = Paper Birch	J = Jack Pine	O = Oak	UM = Upland Mixed	1 = Seedling Sapling Poor	6 = Pole Timber Well
C = Cedar	L = Lowland Brush	P = Lowland Poplar	V = Bog or Marsh	2 = Seedling Sapling Medium	7 = Saw Timber Poor
D = Tread Bog	LM = Lowland Mixed	Q = Mixed Swamp Conifer	W = White Pine	3 = Seedling Sapling Well	8 = Saw Timber Medium
E = Swamp Hdwoods	M = Mpl, Bch, Brch	R = Red Pine	X = Non Stocked	4 = Pole Timber Poor	9 = Saw Timber Well
F = Spruce Fir	MC = Mixed Conifer	S = Black Spruce	Z = Water		
G = Grass	MD = Mixed Deciduous	T = Tamarack			

PU	Acres	PU	Acres	PU	Acres
1)	6.6	5)	17.9	9)	37.1
2)	23.7	6)	35.9	10)	26.9
3)	31.5	7)	21.5	11)	47.4
4)	8.4	8)	20.8	12)	38.1
				13)	19.2
				14)	11.3
				15)	13.7
				16)	22.9
				17)	43.5
				18)	43.4
				19)	58.2
				20)	52.4

Soggy Deadhorse
Compartment 10
580.4 Acres



Legend

- Sale boundary (Red)
- Private (Blue)
- Payment Unit (Yellow)
- == Secondary Forest Road
- == Forest Access Route
- Private
- Section Corners

