



# TIMBER SALE MAP

This information provided by authority of Part 525, 1994 PA 451, as amended.

Forest Management Unit Traverse City		County Kalkaska		Mapped By Armstrong		Date 9/23/20	Page 1 of 2	
Township 28N	Range 6W	Section(s) and Subdivision(s) Sec. 25: SENE			Scale 1:15,840			
28N	5W	S20: SESW; S28: SWSE, NWNW, S1/2NW, S1/2NE, SW, N1/2SE; S29:			NENW, NE; S30: SWNW, SW			

### Cover Type

A = Aspen	H = Hemlock	N = Marsh	U = Upland Brush
B = Paper Birch	J = Jack Pine	O = Oak	UM = Upland Mixed
C = Cedar	L = Lowland Brush	P = Lowland Poplar	V = Bog or Marsh
D = Treed Bog	LM = Lowland Mixed	Q = Mixed Swamp Conifer	W = White Pine
E = Swamp Hdwoods	M = Mpl, Bch, Brch	R = Red Pine	X = Non Stocked
F = Spruce Fir	MC = Mixed Conifer	S = Black Spruce	Z = Water
G = Grass	MD = Mixed Deciduous	T = Tamarack	

### Density

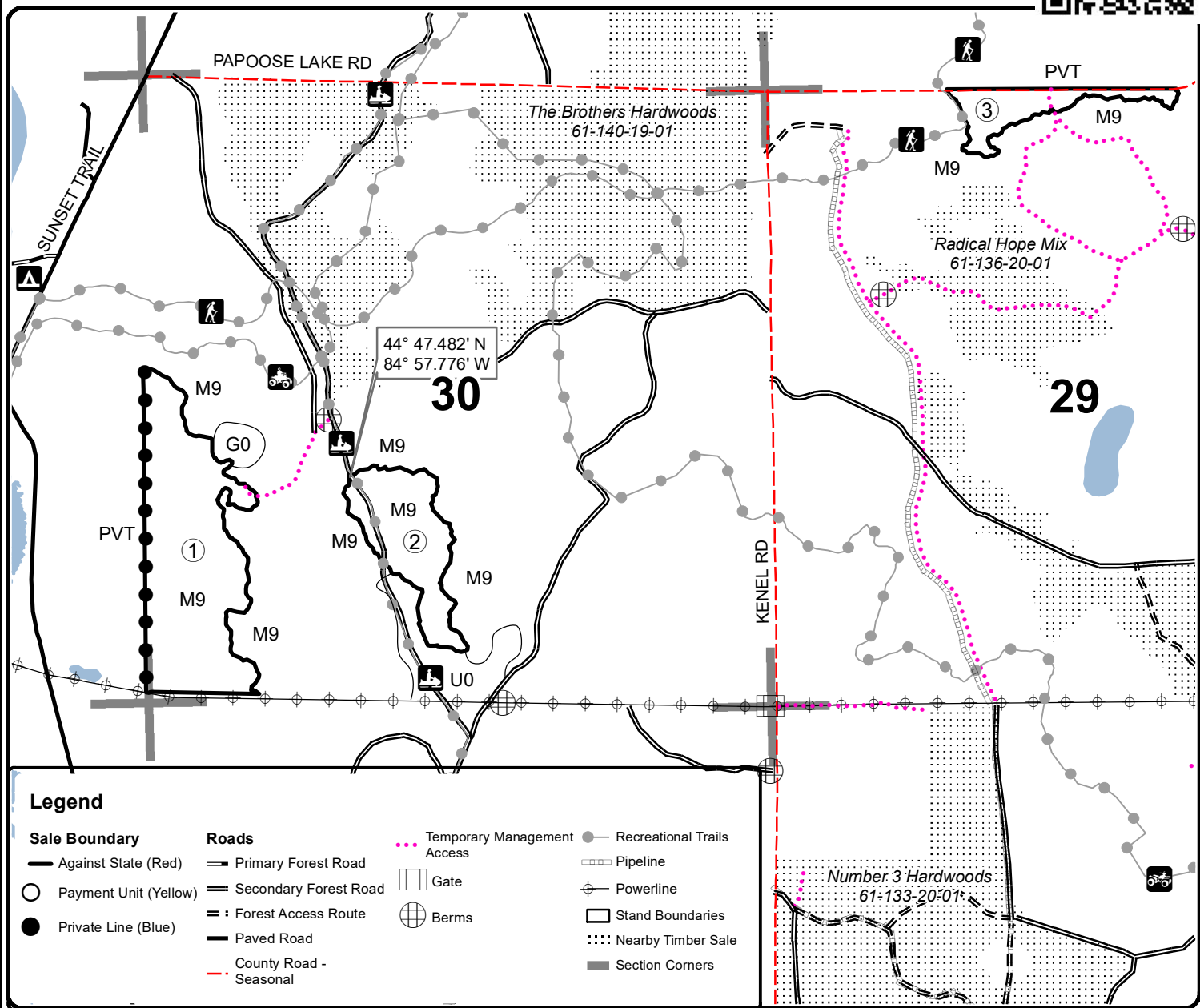
0 = Non Stocked	5 = Pole Timber Medium
1 = Seedling Sapling Poor	6 = Pole Timber Well
2 = Seedling Sapling Medium	7 = Saw Timber Poor
3 = Seedling Sapling Well	8 = Saw Timber Medium
4 = Pole Timber Poor	9 = Saw Timber Well

Unit	Acres	Unit	Acres	Unit	Acres
1	44.1	5	26.0	9	24.8
2	18.5	6	20.7	10	24.8
3	9.3	7	13.0	11	58.9
4	17.0	8	19.6		

## Rotor Wing and a Prayer

### Compartment 108

276.7 acres



### Legend

#### Sale Boundary

- Against State (Red)
- Payment Unit (Yellow)
- Private Line (Blue)

#### Roads

- Primary Forest Road
- Secondary Forest Road
- Forest Access Route
- Paved Road
- County Road - Seasonal

#### Temporary Management Access

- Gate
- ⊕ Berms

#### Recreational Trails

- Pipeline
- ⊕ Powerline
- Stand Boundaries
- ⋯ Nearby Timber Sale
- Section Corners

