



TIMBER SALE MAP

This information provided by authority of Part 525, 1994 PA 451, as amended.

Forest Management Unit Traverse City		County Kalkaska	Mapped By Crigier	Date 08/15/2023	Page 1	of 1
Township 28N	Range 05W	Section(s) and Subdivision(s) Sections: 25, 26, 35, 36		Scale 1:15,840		

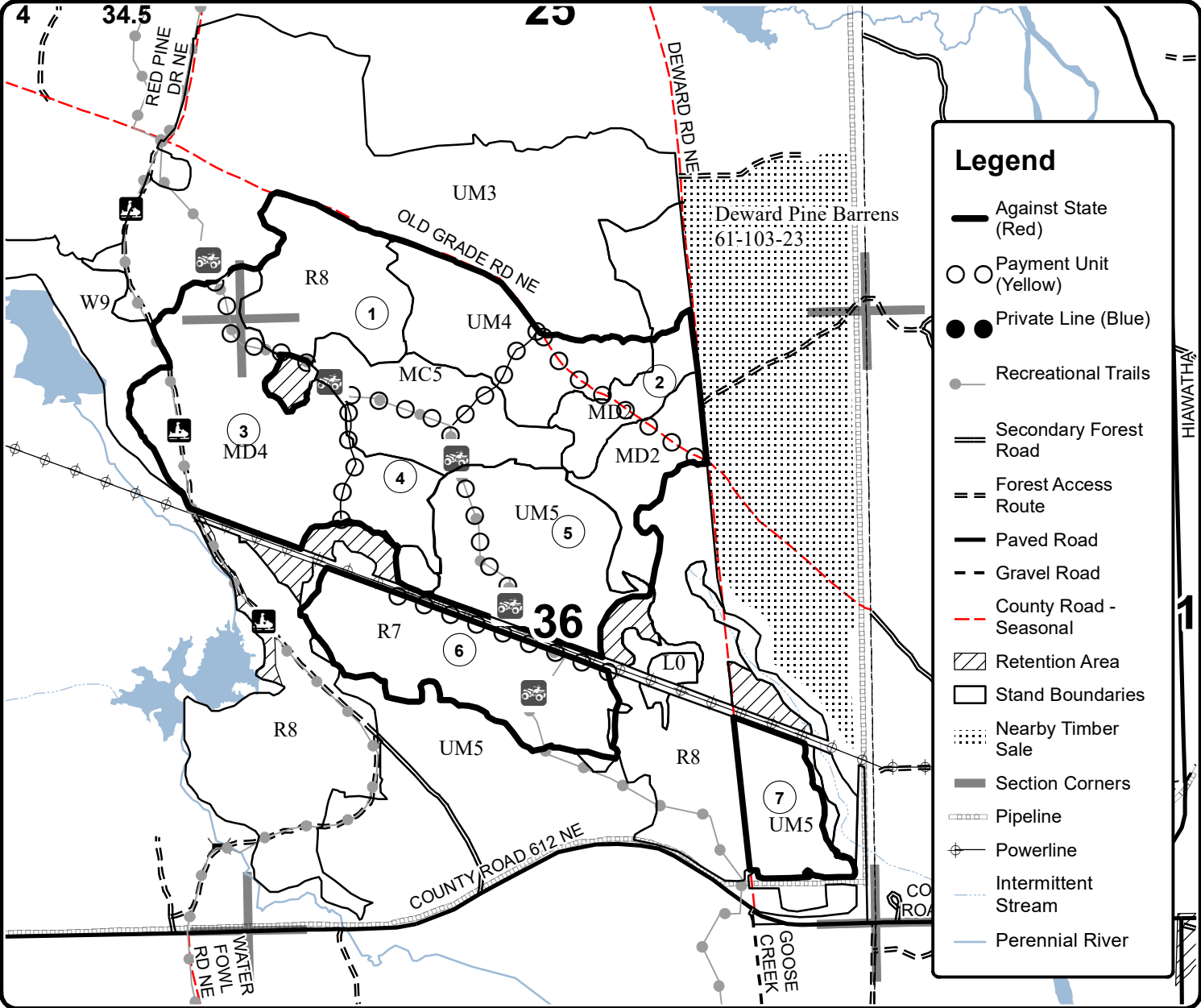
Cover Type				Density	
A = Aspen	H = Hemlock	N = Marsh	U = Upland Brush	0 = Non Stocked	5 = Pole Timber Medium
B = Paper Birch	J = Jack Pine	O = Oak	UM = Upland Mixed	1 = Seedling Sapling Poor	6 = Pole Timber Well
C = Cedar	L = Lowland Brush	P = Lowland Poplar	V = Bog or Marsh	2 = Seedling Sapling Medium	7 = Saw Timber Poor
D = Treed Bog	LM = Lowland Mixed	Q = Mixed Swamp Conifer	W = White Pine	3 = Seedling Sapling Well	8 = Saw Timber Medium
E = Swamp Hdwoods	M = Mpl, Bch, Brch	R = Red Pine	X = Non Stocked	4 = Pole Timber Poor	9 = Saw Timber Well
F = Spruce Fir	MC = Mixed Conifer	S = Black Spruce	Z = Water		
G = Grass	MD = Mixed Deciduous	T = Tamarack			

PU	Acres	PU	Acres
1	70.2	5	74.2
2	19.2	6	46.7
3	58.3	7	19.5
4	34.5		

Big Ernie Mix

Compartment 107

322.6 Acres



Legend

- Against State (Red)
- ○ Payment Unit (Yellow)
- ● Private Line (Blue)
- Recreational Trails
- == Secondary Forest Road
- == Forest Access Route
- Paved Road
- - Gravel Road
- - - County Road - Seasonal
- ▨ Retention Area
- Stand Boundaries
- ▤ Nearby Timber Sale
- Section Corners
- Pipeline
- ⚡ Powerline
- ⋯ Intermittent Stream
- Perennial River

