



TIMBER SALE MAP

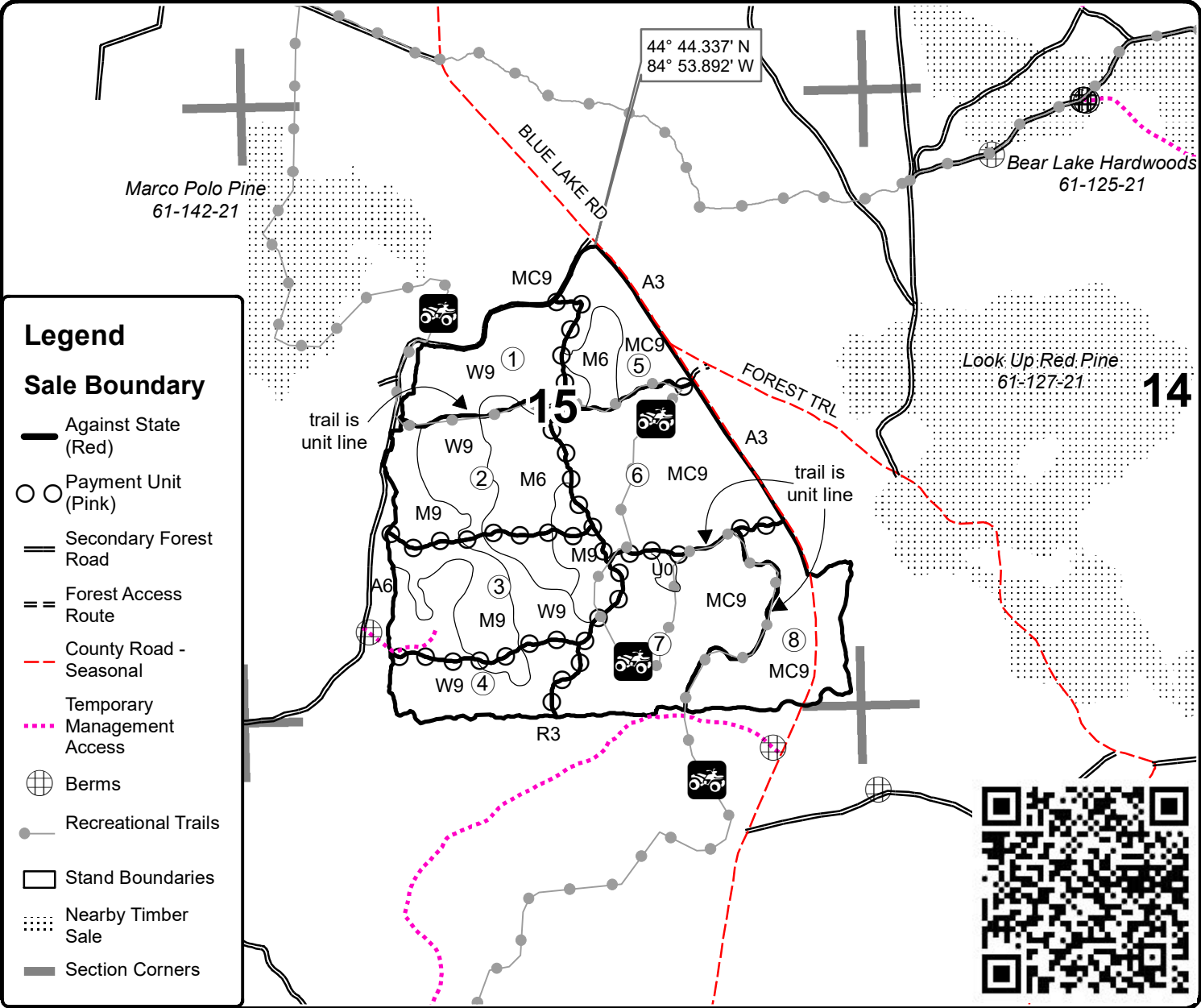
This information provided by authority of Part 525, 1994 PA 451, as amended.

Forest Management Unit Traverse City		County Kalkaska	Mapped By Armstrong	Date 9/27/2021	Page 1	of 1
Township 27N	Range 5W	Section(s) and Subdivision(s) Sec. 15: SENW, W1/2NE, SW, SE; Sec. 22: NENW, N1/2NE	Cruised By Armstrong, Roell	Scale 1:15,840		

Cover Type				Density	
A = Aspen	H = Hemlock	N = Marsh	U = Upland Brush	0 = Non Stocked	5 = Pole Timber Medium
B = Paper Birch	J = Jack Pine	O = Oak	UM = Upland Mixed	1 = Seedling Sapling Poor	6 = Pole Timber Well
C = Cedar	L = Lowland Brush	P = Lowland Poplar	V = Bog or Marsh	2 = Seedling Sapling Medium	7 = Saw Timber Poor
D = Treed Bog	LM = Lowland Mixed	Q = Mixed Swamp Conifer	W = White Pine	3 = Seedling Sapling Well	8 = Saw Timber Medium
E = Swamp Hdwoods	M = Mpl, Bch, Brch	R = Red Pine	X = Non Stocked	4 = Pole Timber Poor	9 = Saw Timber Well
F = Spruce Fir	MC = Mixed Conifer	S = Black Spruce	Z = Water		
G = Grass	MD = Mixed Deciduous	T = Tamarack			

PU	Acres	PU	Acres
1	23.0	5	20.9
2	36.9	6	43.8
3	41.3	7	41.2
4	18.4	8	27.8

Last Resort Mix Compartment 113 253.3 acres



Legend

Sale Boundary

- Against State (Red)
- Payment Unit (Pink)
- == Secondary Forest Road
- == Forest Access Route
- - - County Road - Seasonal
- Temporary Management Access
- ⊕ Berms
- Recreational Trails
- Stand Boundaries
- ⋯ Nearby Timber Sale
- Section Corners