



TIMBER SALE MAP

61-122

22

This information provided by authority of Part 525, 1994 PA 451, as amended.

Forest Management Unit Traverse City	County Kalkaska	Mapped By Crigier	Date 7/5/2022	Page 1	of 1
Township 27N	Range 05W	Cruised By UMLM & Crigier	Scale 1:15,840		

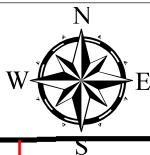
Speed Bump Hardwoods

Compartment 110

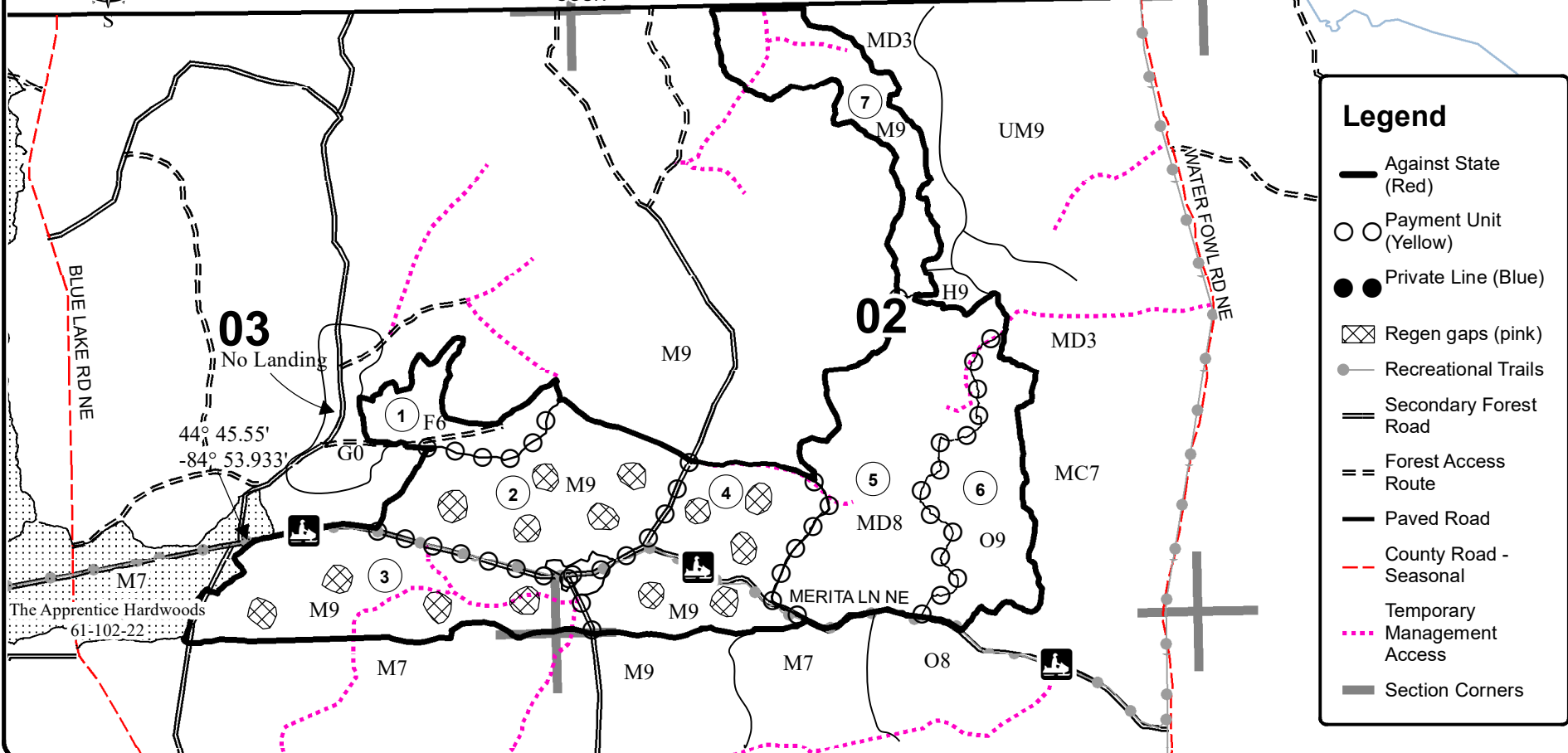
289.9 acres

Cover Type				Density			
A = Aspen	H = Hemlock	N = Marsh	U = Upland Brush	0 = Non Stocked	5 = Pole Timber Medium		
B = Paper Birch	J = Jack Pine	O = Oak	UM = Upland Mixed	1 = Seedling Sapling Poor	6 = Pole Timber Well		
C = Cedar	L = Lowland Brush	P = Lowland Poplar	V = Bog or Marsh	2 = Seedling Sapling Medium	7 = Saw Timber Poor		
D = Tread Bog	LM = Lowland Mixed	Q = Mixed Swamp Conifer	W = White Pine	3 = Seedling Sapling Well	8 = Saw Timber Medium		
E = Swamp Hdwoods	M = Mpl, Bch, Brch	R = Red Pine	X = Non Stocked	4 = Pole Timber Poor	9 = Saw Timber Well		
F = Spruce Fir	MC = Mixed Conifer	S = Black Spruce	Z = Water				
G = Grass	MD = Mixed Deciduous	T = Tamarack					

PU	Acres	PU	Acres
1	15.6	5	67
2	50.0	6	32.1
3	51.2	7	30.1
4	43.9		



COUNTY ROAD 612 NE



Legend

- Against State (Red)
- Payment Unit (Yellow)
- Private Line (Blue)
- Regen gaps (pink)
- Recreational Trails
- Secondary Forest Road
- Forest Access Route
- Paved Road
- County Road - Seasonal
- Temporary Management Access
- Section Corners

