



TIMBER SALE MAP

This information provided by authority of Part 525, 1994 PA 451, as amended.

Forest Management Unit Sault Ste Marie		County Mackinac	Mapped By A Krugh	Date 8/13/2020	Page 1	of 1
Township 44N & 45N	Range 10W	Section(s) and Subdivision(s) 2: SESW 3: NWNW, N1/2SE 34:SWSW			Scale 1:15,840	

Cover Type

A = Aspen	H = Hemlock	N = Marsh	U = Upland Brush
B = Paper Birch	J = Jack Pine	O = Oak	UM = Upland Mixed
C = Cedar	L = Lowland Brush	P = Lowland Poplar	V = Bog or Marsh
D = Treed Bog	LM = Lowland Mixed	Q = Mixed Swamp Conifer	W = White Pine
E = Swamp Hdwoods	M = Mpl, Bch, Brch	R = Red Pine	X = Non Stocked
F = Spruce Fir	MC = Mixed Conifer	S = Black Spruce	Z = Water
G = Grass	MD = Mixed Deciduous	T = Tamarack	

Density

0 = Non Stocked	5 = Pole Timber Medium
1 = Seedling Sapling Poor	6 = Pole Timber Well
2 = Seedling Sapling Medium	7 = Saw Timber Poor
3 = Seedling Sapling Well	8 = Saw Timber Medium
4 = Pole Timber Poor	9 = Saw Timber Well

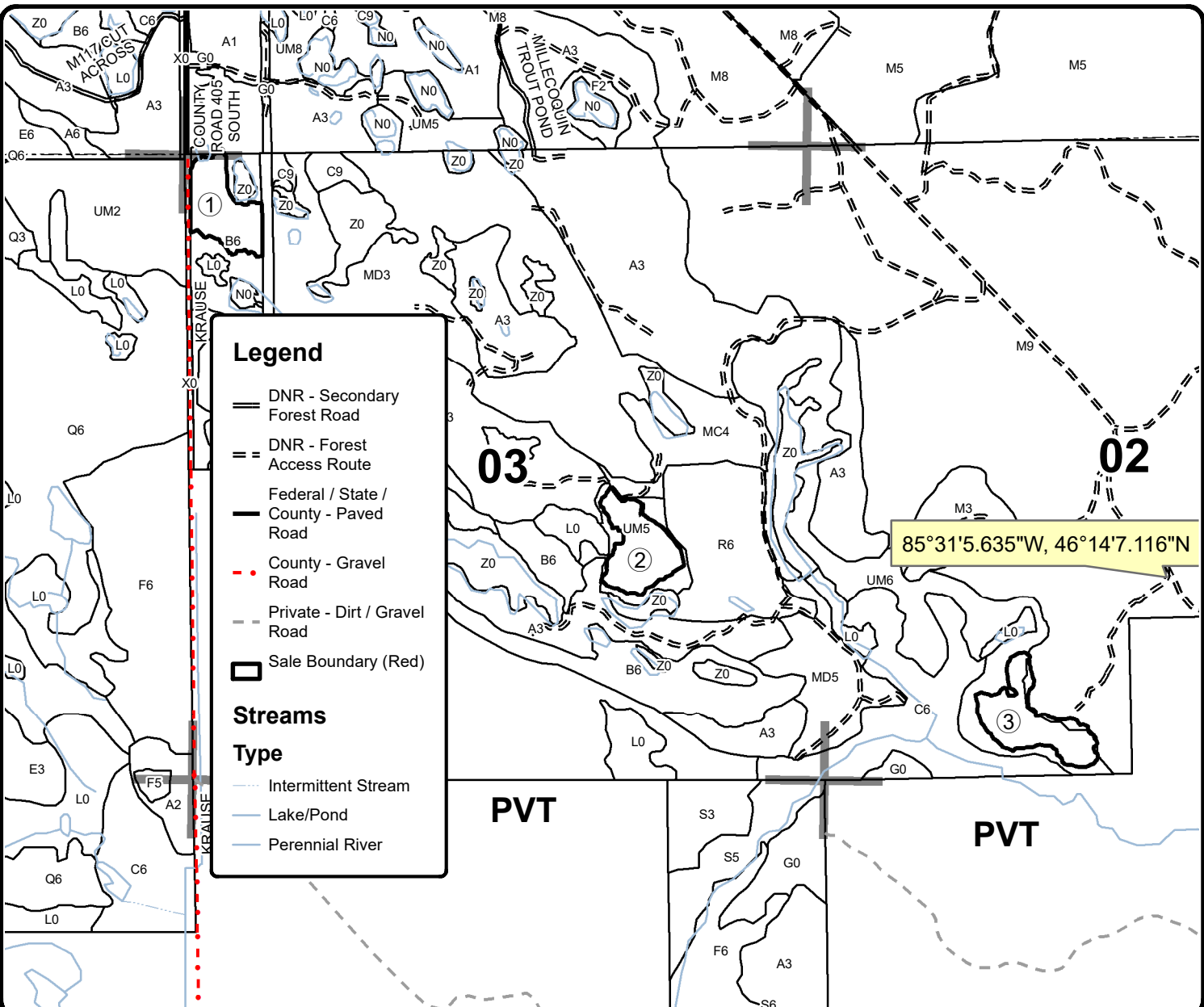
PU Acres

1	7.9
2	8.4
3	9.7

34 Krause

Compartment 178

26 Acres



Legend

- DNR - Secondary Forest Road
- DNR - Forest Access Route
- Federal / State / County - Paved Road
- County - Gravel Road
- Private - Dirt / Gravel Road
- Sale Boundary (Red)

Streams

- Intermittent Stream
- Lake/Pond
- Perennial River

