



TIMBER SALE MAP

This information provided by authority of Part 525, 1994 PA 451, as amended.

Forest Management Unit	County	Mapped By	Date	Page	of
Sault Ste Marie Management Unit	Mackinac	A. Krugh	06/26/2019	1	1
Township	Range	Section(s) and Subdivision(s)	Scale		
43N	7W	21: E1/2NE 22:NWNW	1:15,840		

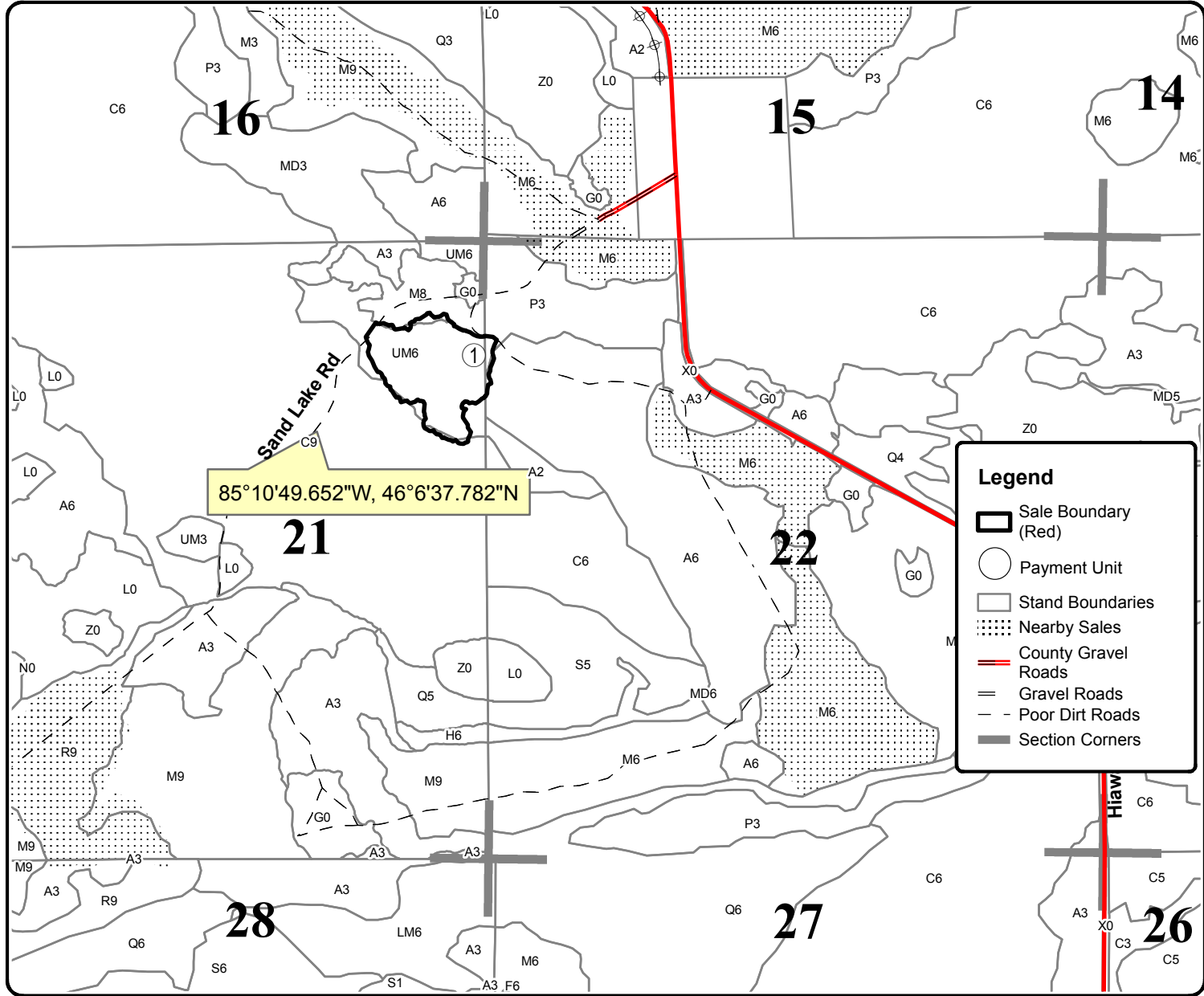
Cover Type				Density	
A = Aspen	H = Hemlock	N = Marsh	U = Upland Brush	0 = Non Stocked	5 = Pole Timber Medium
B = Paper Birch	J = Jack Pine	O = Oak	UM = Upland Mixed	1 = Seedling Sapling Poor	6 = Pole Timber Well
C = Cedar	L = Lowland Brush	P = Lowland Poplar	V = Bog or Marsh	2 = Seedling Sapling Medium	7 = Saw Timber Poor
D = Treed Bog	LM = Lowland Mixed	Q = Mixed Swamp Conifer	W = White Pine	3 = Seedling Sapling Well	8 = Saw Timber Medium
E = Swamp Hdwoods	M = Mpl, Bch, Brch	R = Red Pine	X = Non Stocked	4 = Pole Timber Poor	9 = Saw Timber Well
F = Spruce Fir	MC = Mixed Conifer	S = Black Spruce	Z = Water		
G = Grass	MD = Mixed Deciduous	T = Tamarack			

Forgotten Aspen

Compartment 138

17 Acres

PU ACRES
1 17



85° 10' 49.652" W, 46° 6' 37.782" N

Legend

- Sale Boundary (Red)
- Payment Unit
- Stand Boundaries
- Nearby Sales
- County Gravel Roads
- Gravel Roads
- Poor Dirt Roads
- Section Corners

