



TIMBER SALE MAP

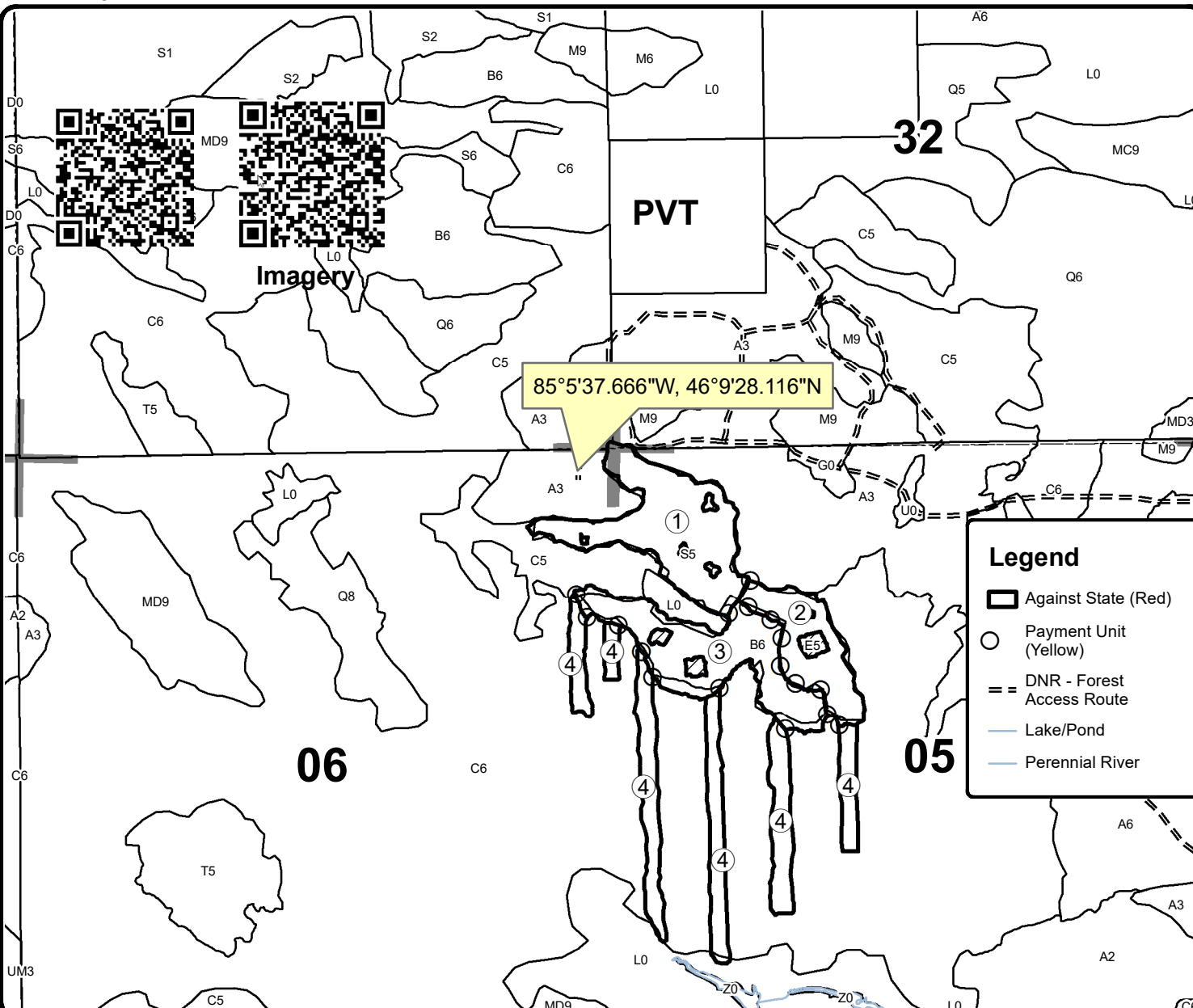
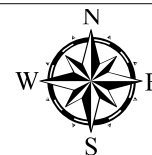
This information provided by authority of Part 525, 1994 PA 451, as amended.

Forest Management Unit Sault Ste Marie	County Mackinac	Mapped By A Krugh	Date 9/23/2019	Page 1	of 1
Township 43N 44N	Range 06W	Section(s) and Subdivision(s) 5: NW, N1/2SW, SWSW 6: E1/2NE 31: SESE 32: SWSW	Scale 1:15,840		

Cover Type				Density	
A = Aspen	H = Hemlock	N = Marsh	U = Upland Brush	0 = Non Stocked	5 = Pole Timber Medium
B = Paper Birch	J = Jack Pine	O = Oak	UM = Upland Mixed	1 = Seedling Sapling Poor	6 = Pole Timber Well
C = Cedar	L = Lowland Brush	P = Lowland Poplar	V = Bog or Marsh	2 = Seedling Sapling Medium	7 = Saw Timber Poor
D = Treed Bog	LM = Lowland Mixed	Q = Mixed Swamp Conifer	W = White Pine	3 = Seedling Sapling Well	8 = Saw Timber Medium
E = Swamp Hdwoods	M = Mpl, Bch, Brch	R = Red Pine	X = Non Stocked	4 = Pole Timber Poor	9 = Saw Timber Well
F = Spruce Fir	MC = Mixed Conifer	S = Black Spruce	Z = Water		
G = Grass	MD = Mixed Deciduous	T = Tamarack			

PU	Acres
1	24.2
2	12.2
3	21.8
4	28.2

Grand Lowland Compartment 111 86.4 Acres



Legend

- Against State (Red)
- Payment Unit (Yellow)
- DNR - Forest Access Route
- Lake/Pond
- Perennial River

