



# TIMBER SALE MAP

This information provided by authority of Part 525, 1994 PA 451, as amended.

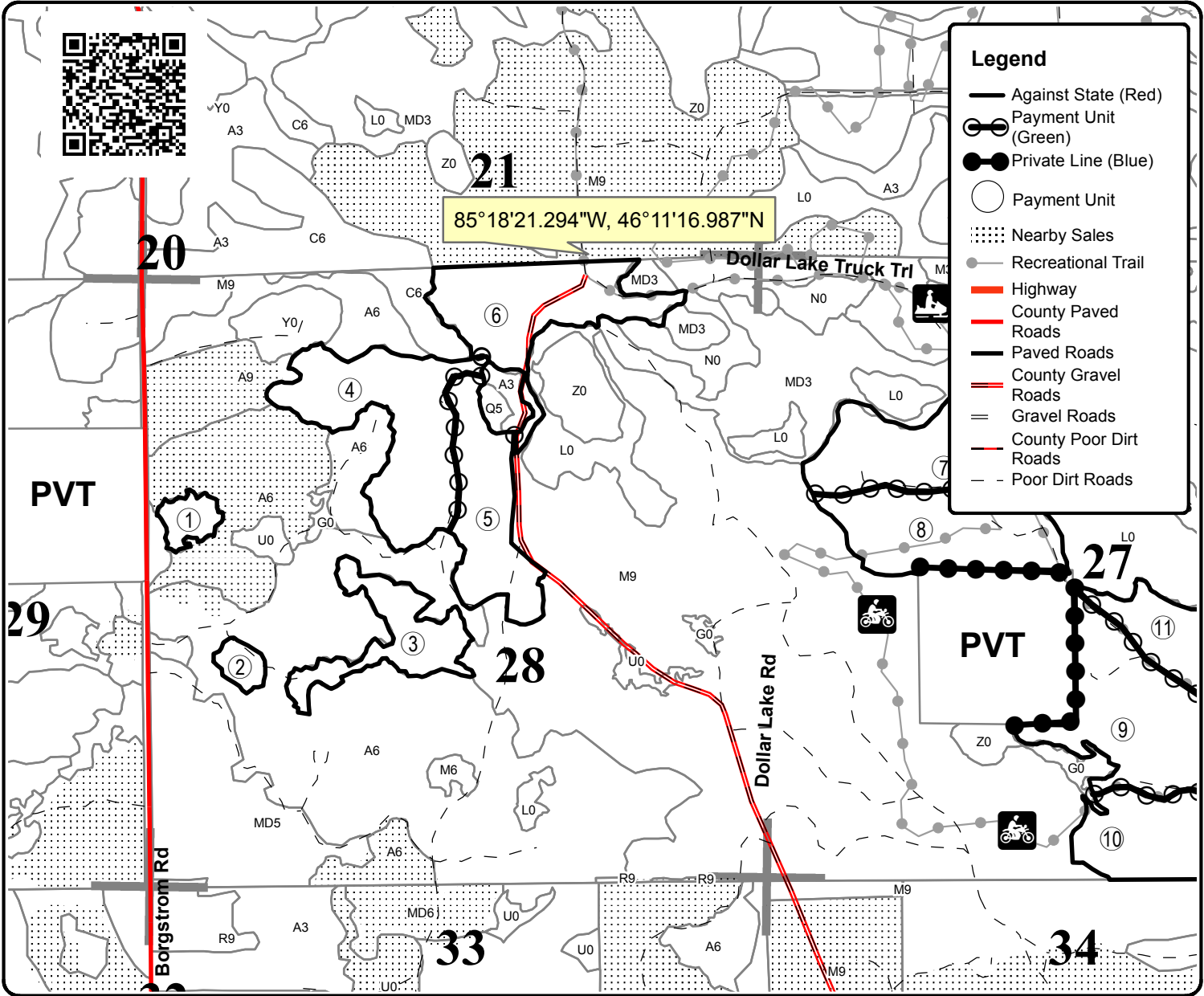
Forest Management Unit <b>Sault Ste Marie Management Unit</b>		County <b>Mackinac</b>	Mapped By <b>A. Krugh</b>	Date <b>09/03/2019</b>	Page <b>1</b>	of <b>2</b>
Township <b>44N</b>	Range <b>8W</b>	Section(s) and Subdivision(s) <b>27:NW,W1/2NE,NWSW,SESW,SE</b> <b>28:NW,N1/2NE,SWNE,N1/2SW,NWSE</b>		Scale <b>1:15,840</b>		

Cover Type				Density	
A = Aspen	H = Hemlock	N = Marsh	U = Upland Brush	0 = Non Stocked	5 = Pole Timber Medium
B = Paper Birch	J = Jack Pine	O = Oak	UM = Upland Mixed	1 = Seedling Sapling Poor	6 = Pole Timber Well
C = Cedar	L = Lowland Brush	P = Lowland Poplar	V = Bog or Marsh	2 = Seedling Sapling Medium	7 = Saw Timber Poor
D = Treed Bog	LM = Lowland Mixed	Q = Mixed Swamp Conifer	W = White Pine	3 = Seedling Sapling Well	8 = Saw Timber Medium
E = Swamp Hdwoods	M = Mpl, Bch, Brch	R = Red Pine	X = Non Stocked	4 = Pole Timber Poor	9 = Saw Timber Well
F = Spruce Fir	MC = Mixed Conifer	S = Black Spruce	Z = Water		
G = Grass	MD = Mixed Deciduous	T = Tamarack			

## Greenback Hardwoods

Compartment 157  
315.4 Acres

PU	Acres	PU	Acres	PU	Acres
1	4.2	5	22.5	9	39.8
2	3.1	6	27.6	10	33.4
3	15.5	7	39.7	11	42.9
4	34.6	8	28.4	12	23.7



### Legend

- Against State (Red)
- Payment Unit (Green)
- Private Line (Blue)
- Payment Unit
- ▨ Nearby Sales
- Recreational Trail
- Highway
- County Paved Roads
- Paved Roads
- County Gravel Roads
- Gravel Roads
- County Poor Dirt Roads
- Poor Dirt Roads

