



TIMBER SALE MAP

This information provided by authority of Part 525, 1994 PA 451, as amended.

Forest Management Unit Sault Ste Marie Management Unit		County Mackinac	Mapped By A. Krugh	Date 09/03/2019	Page 2	of 2
Township 44N	Range 8W	Section(s) and Subdivision(s) 27:NW,W1/2NE,NWSW,SESW,SE 28:NW,N1/2NE,SWNE,N1/2SW,NWSE		Scale 1:15,840		

Cover Type				Density	
A = Aspen	H = Hemlock	N = Marsh	U = Upland Brush	0 = Non Stocked	5 = Pole Timber Medium
B = Paper Birch	J = Jack Pine	O = Oak	UM = Upland Mixed	1 = Seedling Sapling Poor	6 = Pole Timber Well
C = Cedar	L = Lowland Brush	P = Lowland Poplar	V = Bog or Marsh	2 = Seedling Sapling Medium	7 = Saw Timber Poor
D = Treed Bog	LM = Lowland Mixed	Q = Mixed Swamp Conifer	W = White Pine	3 = Seedling Sapling Well	8 = Saw Timber Medium
E = Swamp Hdwoods	M = Mpl, Bch, Brch	R = Red Pine	X = Non Stocked	4 = Pole Timber Poor	9 = Saw Timber Well
F = Spruce Fir	MC = Mixed Conifer	S = Black Spruce	Z = Water		
G = Grass	MD = Mixed Deciduous	T = Tamarack			

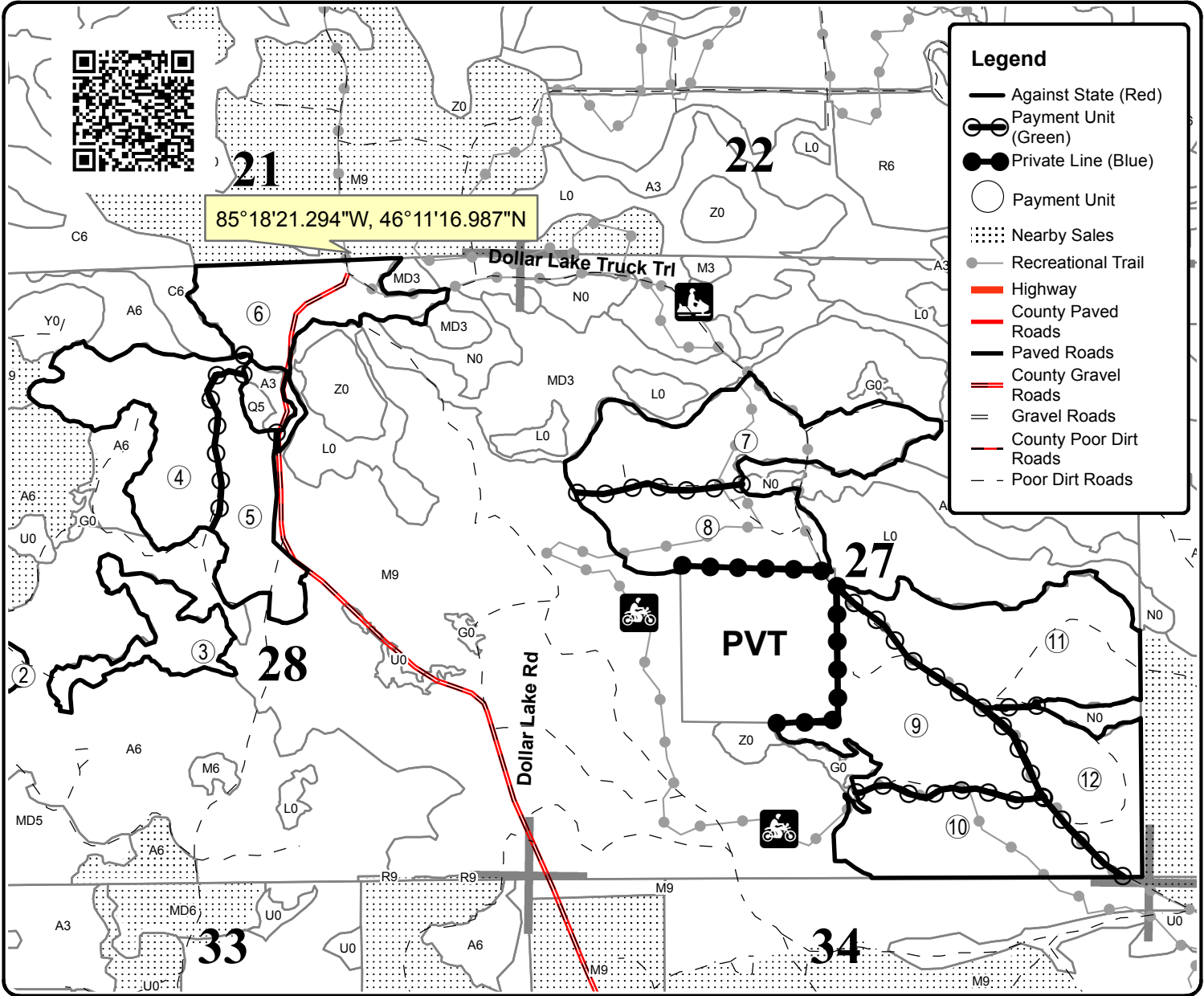
Greenback Hardwoods

Compartment 157
315.4 Acres

PU	Acres	PU	Acres	PU	Acres
1	4.2	5	22.5	9	39.8
2	3.1	6	27.6	10	33.4
3	15.5	7	39.7	11	42.9
4	34.6	8	28.4	12	23.7



85°18'21.294"W, 46°11'16.987"N



Legend

- Against State (Red)
- Payment Unit (Green)
- Private Line (Blue)
- Payment Unit
- ⋯ Nearby Sales
- Recreational Trail
- Highway
- County Paved Roads
- Paved Roads
- County Gravel Roads
- Gravel Roads
- County Poor Dirt Roads
- Poor Dirt Roads

