



TIMBER SALE MAP

This information provided by authority of Part 525, 1994 PA 451, as amended.

Forest Management Unit Sault Ste Marie		County Mackinac	Mapped By A Krugh	Date 4/03/2020	Page 1	of 1
Township 43N	Range 06W	Section(s) and Subdivision(s) 4: NW, W1/2NE, N1/2SW 5: E1/2NE		Scale 1:15,840		

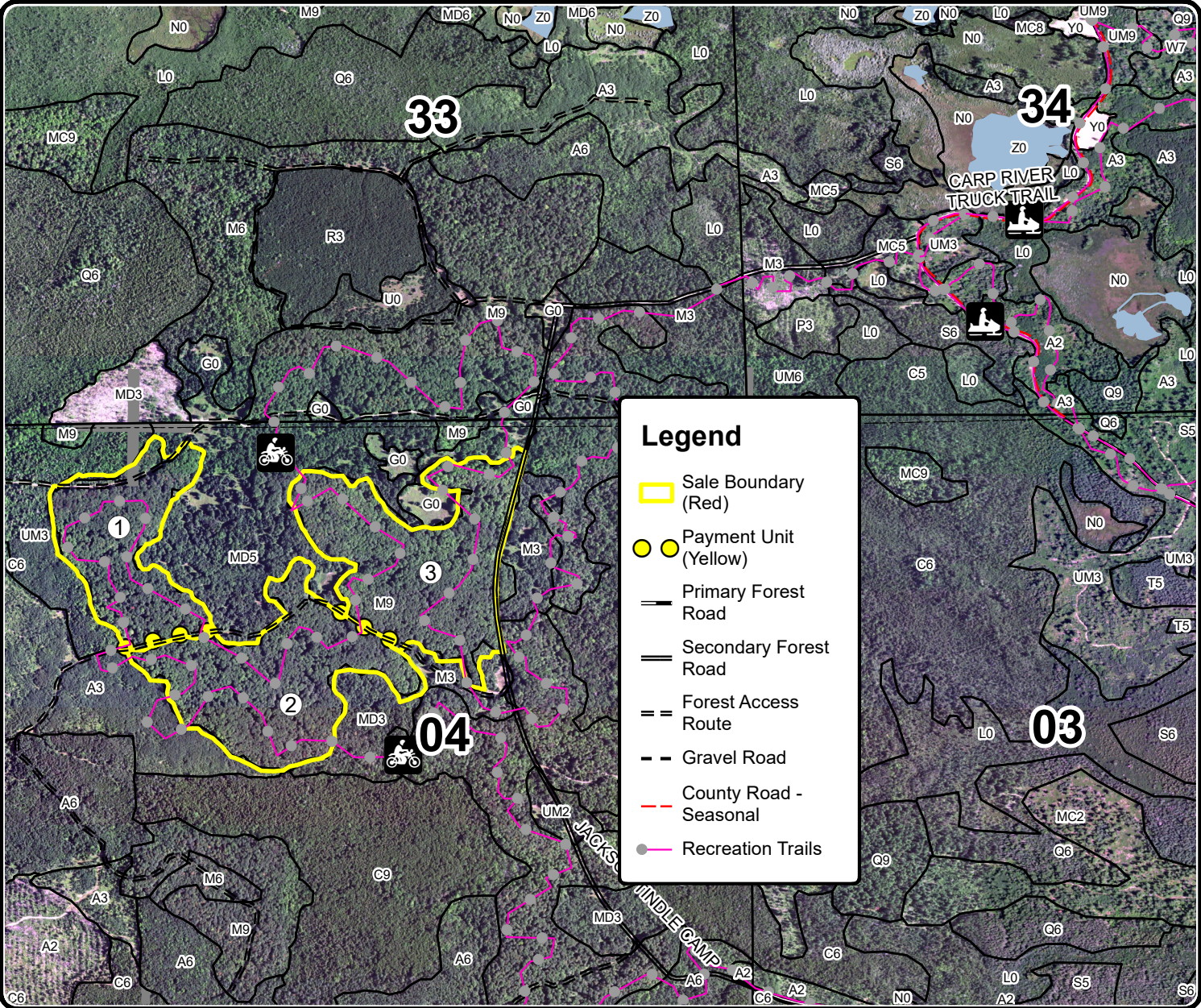
Cover Type				Density	
A = Aspen	H = Hemlock	N = Marsh	U = Upland Brush	0 = Non Stocked	5 = Pole Timber Medium
B = Paper Birch	J = Jack Pine	O = Oak	UM = Upland Mixed	1 = Seedling Sapling Poor	6 = Pole Timber Well
C = Cedar	L = Lowland Brush	P = Lowland Poplar	V = Bog or Marsh	2 = Seedling Sapling Medium	7 = Saw Timber Poor
D = Treed Bog	LM = Lowland Mixed	Q = Mixed Swamp Conifer	W = White Pine	3 = Seedling Sapling Well	8 = Saw Timber Medium
E = Swamp Hdwoods	M = Mpl, Bch, Brch	R = Red Pine	X = Non Stocked	4 = Pole Timber Poor	9 = Saw Timber Well
F = Spruce Fir	MC = Mixed Conifer	S = Black Spruce	Z = Water		
G = Grass	MD = Mixed Deciduous	T = Tamarack			

PU	Acres
1	32.2
2	45.9
3	49.1

J Tindle HW

Compartment 111

127.2 Acres



Legend

- ▭ Sale Boundary (Red)
- Payment Unit (Yellow)
- Primary Forest Road
- Secondary Forest Road
- Forest Access Route
- Gravel Road
- County Road - Seasonal
- Recreation Trails

