



TIMBER SALE MAP

This information provided by authority of Part 525, 1994 PA 451, as amended.

| | | | | | | |
|--|-------------|---|---------------------------------|--------------------|-----------|---------|
| Forest Management Unit Sault M.U Naubinway F.O. | | County Mackinac | Mapped By Krugh | Date 05/12/2020 | Page 1 | of 1 |
| Township 42N | Range 6W | Section(s) and Subdivision(s) 13- NW, SWNE, N1/2SW, NWSE 14- SENE, NESE | Cruised By Grossman Forestry | Scale 1:7,920 | | |

Cover Type

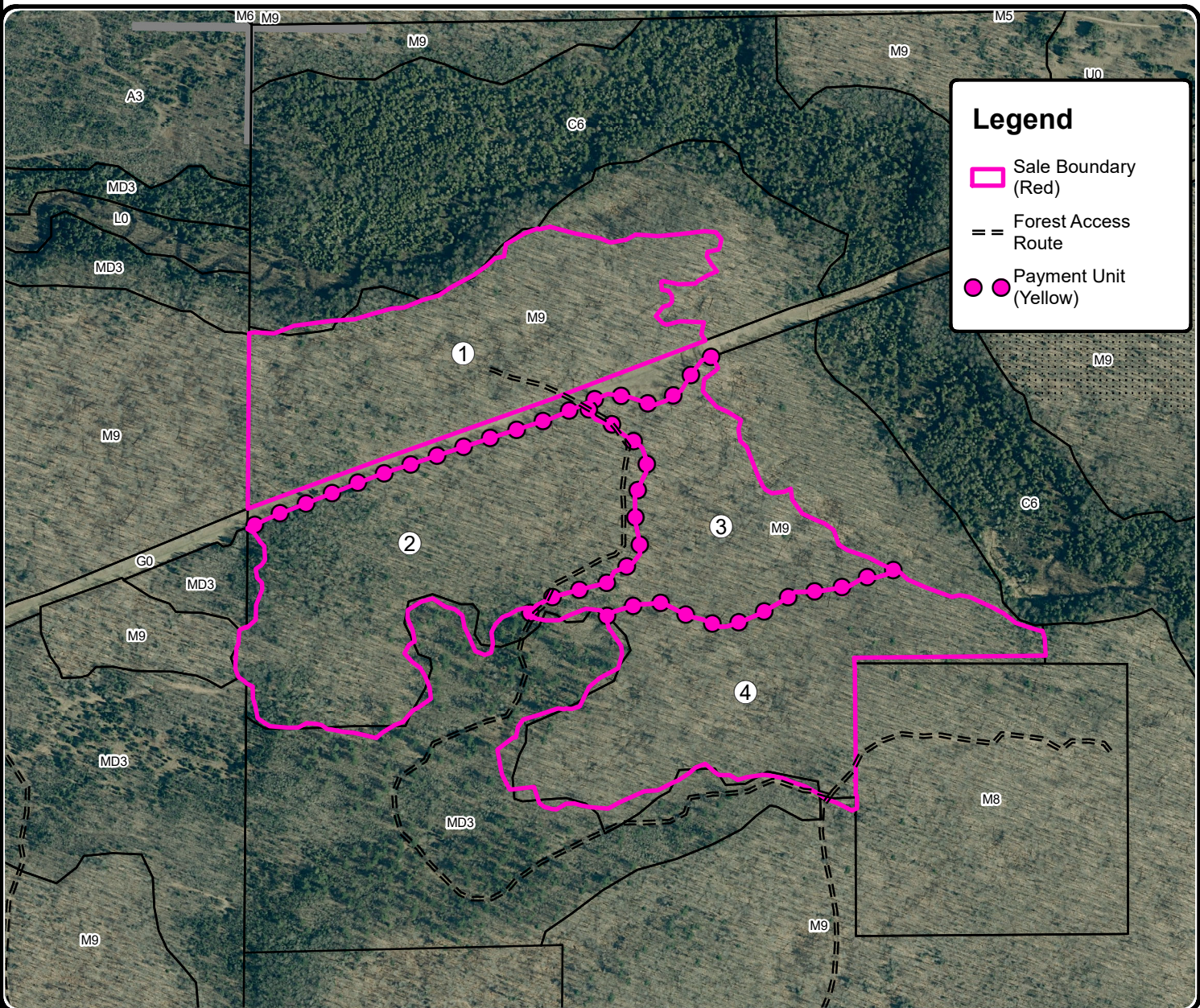
| | | | |
|-------------------|----------------------|-------------------------|-------------------|
| A = Aspen | H = Hemlock | N = Marsh | U = Upland Brush |
| B = Paper Birch | J = Jack Pine | O = Oak | UM = Upland Mixed |
| C = Cedar | L = Lowland Brush | P = Lowland Poplar | V = Bog or Marsh |
| D = Treed Bog | LM = Lowland Mixed | Q = Mixed Swamp Conifer | W = White Pine |
| E = Swamp Hdwoods | M = Mpl, Bch, Brch | R = Red Pine | X = Non Stocked |
| F = Spruce Fir | MC = Mixed Conifer | S = Black Spruce | Z = Water |
| G = Grass | MD = Mixed Deciduous | T = Tamarack | |

Density

| | |
|-----------------------------|------------------------|
| 0 = Non Stocked | 5 = Pole Timber Medium |
| 1 = Seedling Sapling Poor | 6 = Pole Timber Well |
| 2 = Seedling Sapling Medium | 7 = Saw Timber Poor |
| 3 = Seedling Sapling Well | 8 = Saw Timber Medium |
| 4 = Pole Timber Poor | 9 = Saw Timber Well |

| PU | Acres | PU | Acres |
|----|-------|----|-------|
| 1 | 28.2 | 3 | 15.9 |
| 2 | 32.1 | 4 | 27.2 |

Next Door HW
Compartment 101
103.4 Acres



Legend

- Sale Boundary (Red)
- == Forest Access Route
- Payment Unit (Yellow)

