

**TIMBER SALE MAP**

This information provided by authority of Part 525, 1994 PA 451, as amended.

Sale Number

**53-002-25**

Date

**10/07/2025**

Forest Management Unit

County

Mapped By: Rekowski

Scale

**1:15,840**

Page

**1**

Of

**1**

Pigeon River Country Mgt Unit

Otsego

Cruised By: Rekowski

Township

**32N**

Range

**02W**

Section(s) and

Subdivision(s) **Sec. 1 SESE; Sec. 12 E1/2SW,NWSE; Sec. 12 NENW,S1/2NW,N1/2NE,SWNE;****Cover Type**

A = Aspen	J = Jack Pine	O = Oak	U = Upland Brush
B = Paper Birch	K = Rock	P = Lowland Poplar	UM = Upland Mix Forest
C = Cedar	L = Lowland Brush	Q = Mixed Swamp Conifer	V = Bog or Marsh
D = Treed Bog	LM = Lowland Mix Forest	R = Red Pine	W = White Pine
E = Swamp Hardwoods	M = Maple, Beech, Birch	S = Black Spruce	X = Non Stocked
F = Spruce/Fir	MC = Mixed Conifer	T = Tamarack	Y = Sand
G = Grass	MD = Mixed Deciduous	Z = Water	
H = Hemlock	N = Marsh		

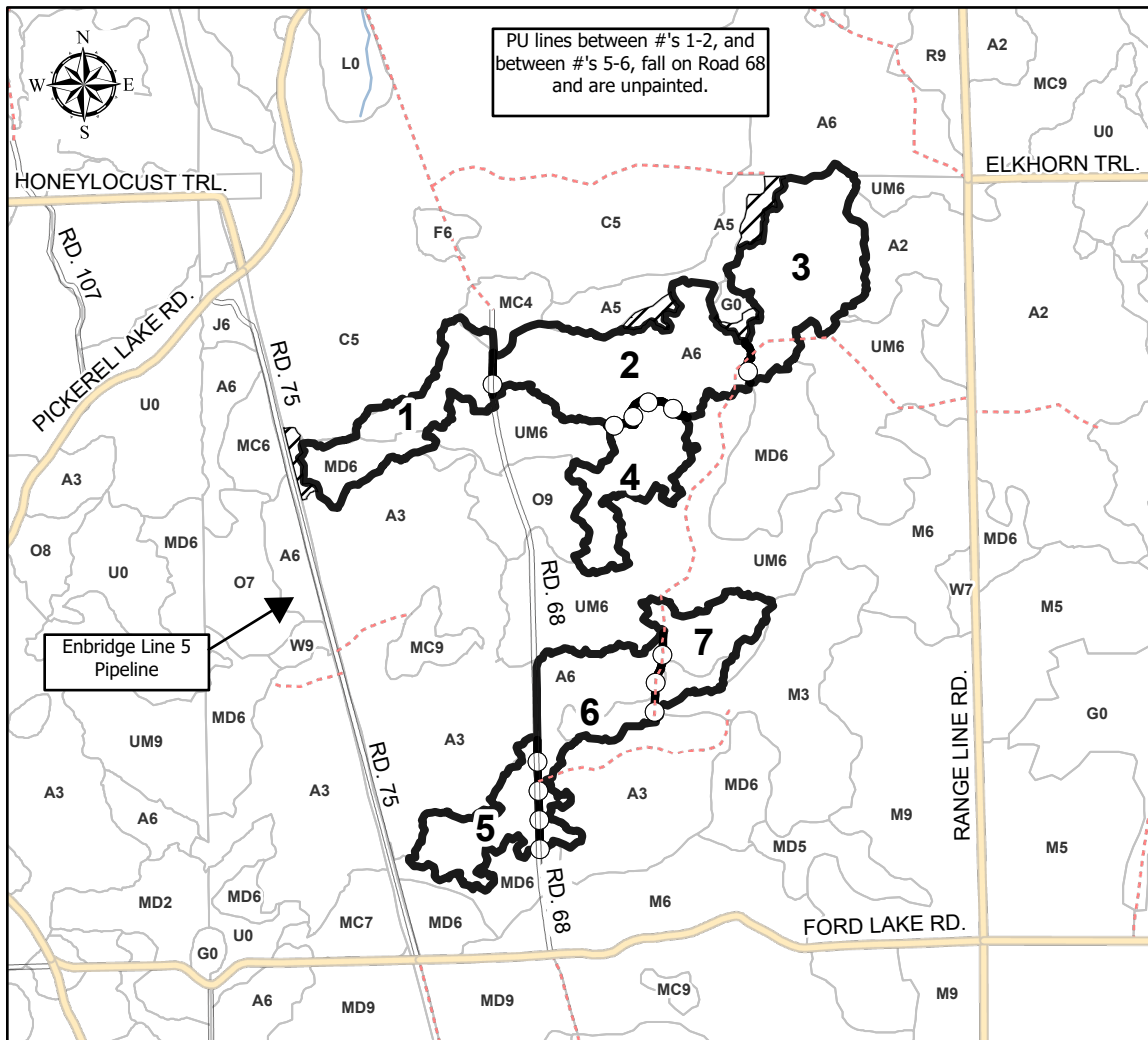
**Density**

0 = Non Stocked	5 = Pole Timber Medium
1 = Seedling Sapling Poor	6 = Pole Timber Well
2 = Seedling Sapling Medium	7 = Saw Timber Poor
3 = Seedling Sapling Well	8 = Saw Timber Medium
4 = Pole Timber Poor	9 = Saw Timber Well

PU #	Acres	PU #	Acres
1	13	5	9.2
2	22.5	6	13.9
3	19.1	7	8.8
4	10.9		

**Mo Money Mo  
Popples****97.3 Acres**

0 0.25 0.5 1 Miles

**Legend**

- Against State (Red)
- Payment Unit (Yellow)
- Retention Areas
- Stand Boundary
- Secondary Forest Road
- Administrative Access Only
- Non-DNR Road

Use QR Code to open Map in App

