



TIMBER SALE MAP

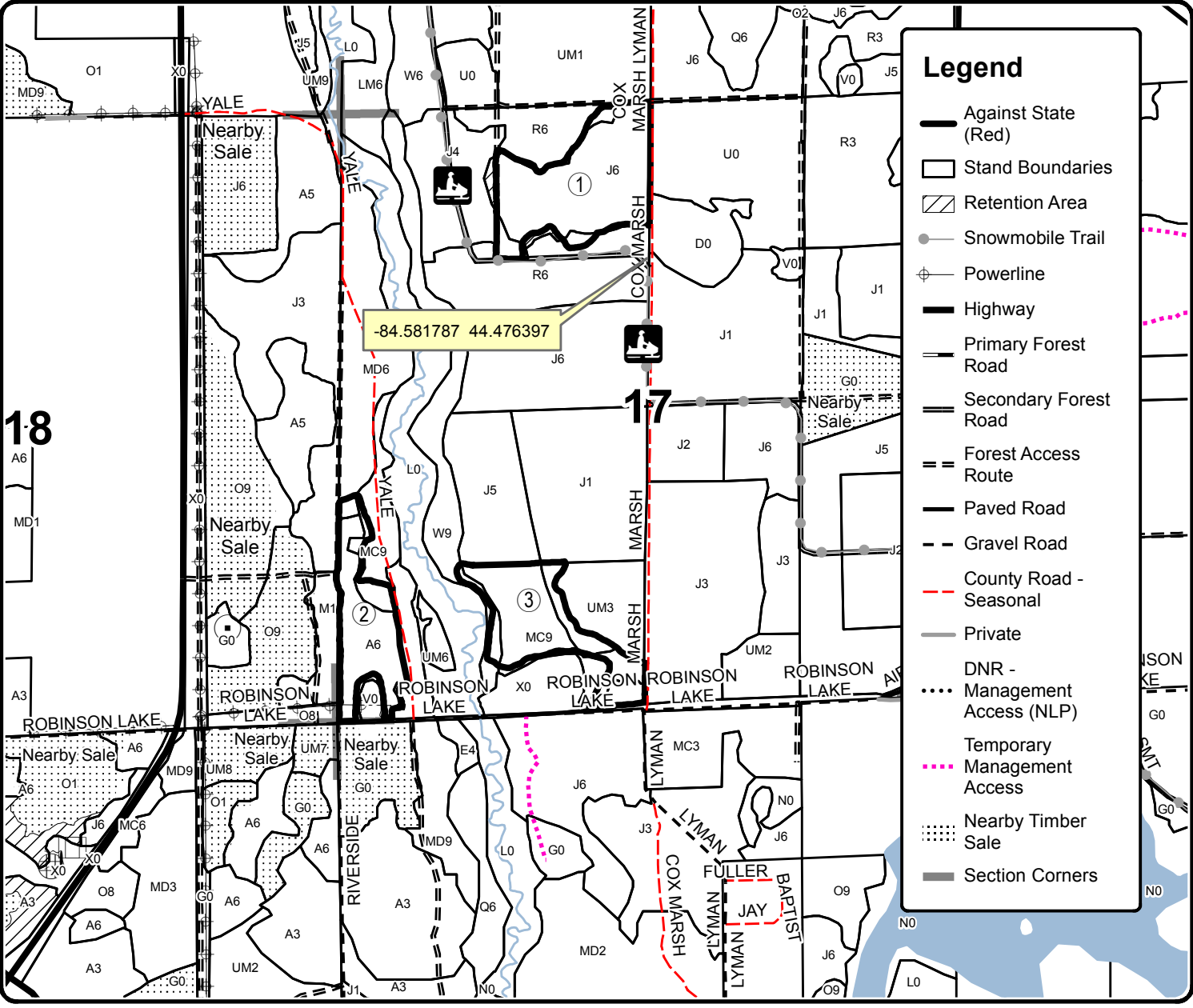
This information provided by authority of Part 525, 1994 PA 451, as amended.

Forest Management Unit Roscommon		County Roscommon	Mapped By Martell	Date 08/15/19	Page 1	of 1
Township 24N	Range 02W	Section(s) and Subdivision(s) Sec. 17 - NENW, NWSW, S1/2SW		Scale 1:15,840		

Cover Type				Density	
A = Aspen	H = Hemlock	N = Marsh	U = Upland Brush	0 = Non Stocked	5 = Pole Timber Medium
B = Paper Birch	J = Jack Pine	O = Oak	UM = Upland Mixed	1 = Seedling Sapling Poor	6 = Pole Timber Well
C = Cedar	L = Lowland Brush	P = Lowland Poplar	V = Bog or Marsh	2 = Seedling Sapling Medium	7 = Saw Timber Poor
D = Tread Bog	LM = Lowland Mixed	Q = Mixed Swamp Conifer	W = White Pine	3 = Seedling Sapling Well	8 = Saw Timber Medium
E = Swamp Hdwoods	M = Mpl, Bch, Brch	R = Red Pine	X = Non Stocked	4 = Pole Timber Poor	9 = Saw Timber Well
F = Spruce Fir	MC = Mixed Conifer	S = Black Spruce	Z = Water		
G = Grass	MD = Mixed Deciduous	T = Tamarack			

PU	Acres
1	26.4
2	15.4
3	18.8

Quick Mix Compartment 33 60.6 Acres



Legend

- Against State (Red)
- Stand Boundaries
- Retention Area
- Snowmobile Trail
- Powerline
- Highway
- Primary Forest Road
- Secondary Forest Road
- Forest Access Route
- Paved Road
- Gravel Road
- County Road - Seasonal
- Private
- DNR - Management Access (NLP)
- Temporary Management Access
- Nearby Timber Sale
- Section Corners

