



TIMBER SALE MAP

This information provided by authority of Part 525, 1994 PA 451, as amended.

Sale Number 45-806-27	Date 06/18/2026	
Scale 1:24,000	Page 1	Of 1

Forest Management Unit Sault Ste Marie Mgt Unit	County Chippewa	Mapped By: Gabler
		Cruised By: DNR

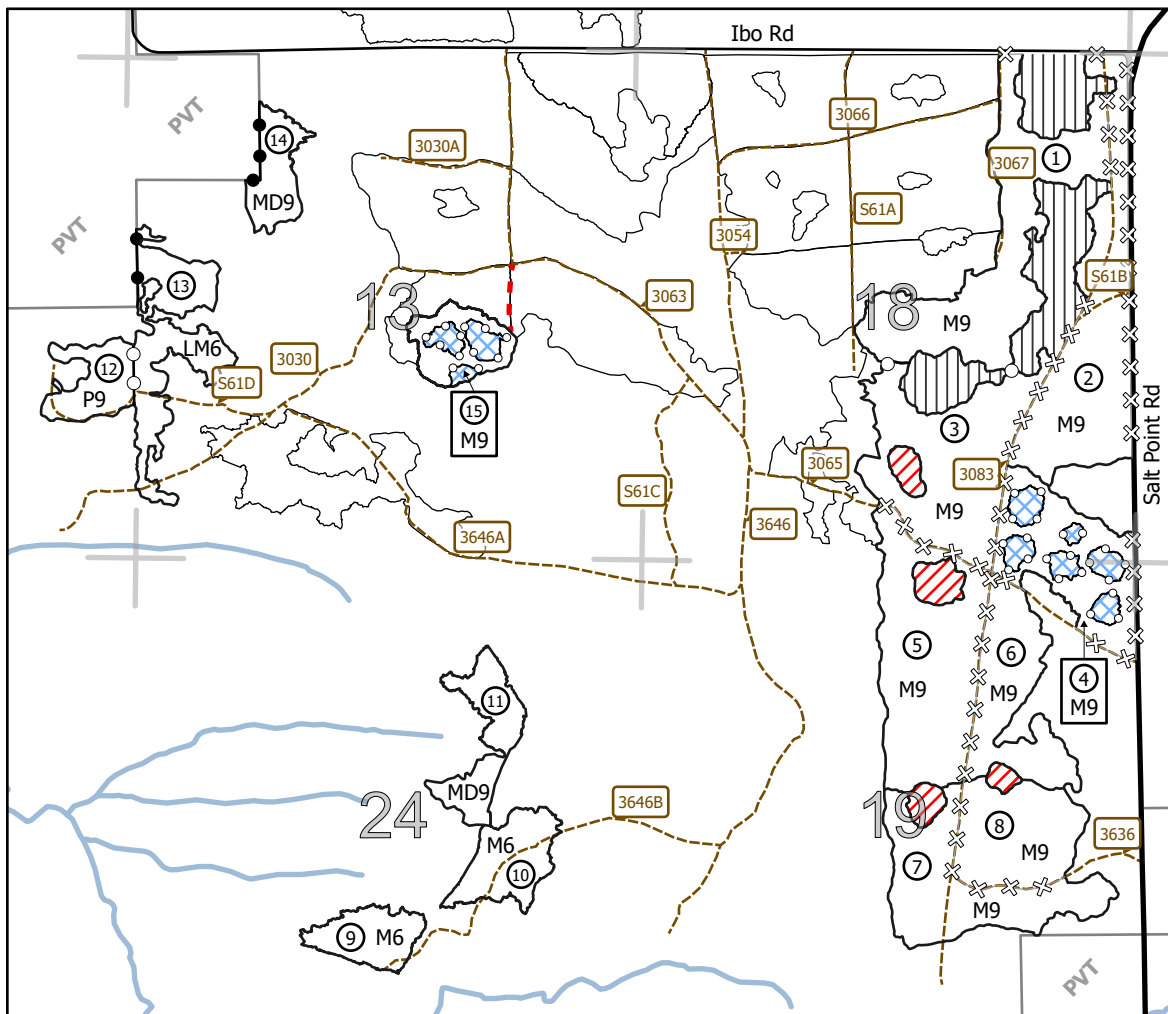
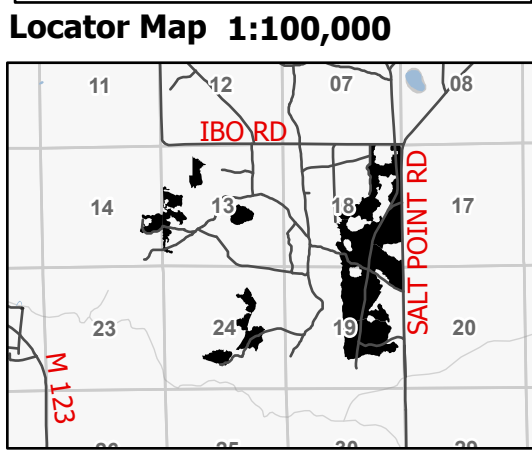
Township **46N** Range **05W / 06W** Section(s) and 19 E1/2NW,NE,NESW,N1/2SE,SWSE; Sec. 24 NWNE,S1/2NE,E1/2SW,N1/2SE,SWSE;
 Subdivision(s) Sec. 13 NENW,S1/2NW,SWNE,W1/2SW,N1/2SE; Sec. 14 NESE; Sec. 18 SENW,NE,E1/2SW,SE; Sec.

Cover Type			
A = Aspen	J = Jack Pine	O = Oak	U = Upland Brush
B = Paper Birch	K = Rock	P = Lowland Poplar	UM = Upland Mix Forest
C = Cedar	L = Lowland Brush	Q = Mixed Swamp Conifer	V = Bog or Marsh
D = Treed Bog	LM = Lowland Mix Forest	R = Red Pine	W = White Pine
E = Swamp Hardwoods	M = Maple, Beech, Birch	S = Black Spruce	X = Non Stocked
F = Spruce/Fir	MC = Mixed Conifer	T = Tamarack	Y = Sand
G = Grass	MD = Mixed Deciduous	Z = Water	
H = Hemlock	N = Marsh		

Density	
0 = Non Stocked	5 = Pole Timber Medium
1 = Seedling Sapling Poor	6 = Pole Timber Well
2 = Seedling Sapling Medium	7 = Saw Timber Poor
3 = Seedling Sapling Well	8 = Saw Timber Medium
4 = Pole Timber Poor	9 = Saw Timber Well

Payment Unit Number	Acres	Payment Unit Number	Acres	Payment Unit Number	Acres
1	58.2	6	31	11	17
2	54.7	7	38.3	12	12.9
3	51.9	8	29.7	13	28.1
4	37.7	9	13	14	12.3
5	54.6	10	17	15	15.6

GNA2
Donegal
Hardwoods
472.2 Acres



Legend	
	Nearby Timber Sale
	Old Timber Sale
	Sale Interior Retention
	Designated Gaps
	Against USFS (Orange)
	Private Line (Red)
	Gaps (Blue X's)
	Payment Unit (Orange)
	Payment Unit (Road)
	Streams
	Private Property Boundary
	USFS Road - Open
	Paved
	Gravel
	PU 15 Access

Use QR Code to open Map in App

