



**DEPARTMENT OF NATURAL RESOURCES
STATE OF MICHIGAN
TIMBER SALE PROSPECTUS #7733**

SCHEDULED SALE DATE AND TIME: 9:00 a.m. (local time) on January 8, 2026.

LOCATION: **BARAGA MGMT UNIT, 427 US 41 NORTH, BARAGA, MI 49908.**

PROSPECTUS NOTE: The bidder is advised to inspect the sale area and review the location, estimated volumes, operating costs and contract terms of proposed sales. Please be aware that some landowners may request 60 days or more notice for access across their land.

Notice is hereby given that bids will be received by the Unit Manager, BARAGA MANAGEMENT UNIT, for certain timber on the following described lands:

Saltu Acta (11-011-26) / T51N, R37W, SEC. 10, NW,NE.

Ontonagon County, Advertised Price \$81,419.55, 205.8 Acres, Hardwood, Sugar Maple.

Yeo Yeo Mix 26 (11-017-26) / T52N, R29W, SEC. 18, N1/2SW,SESW.

T52N, R30W, SEC. 13, S1/2NE,SE.

Marquette County, Advertised Price \$92,807.40, 188.8 Acres, Hardwood, Paper Birch.

SALE NOTE: Access may be through private land.

Puppy Paw Hardwood (12-052-26) / T43N, R31W, SEC. 13, SWNW,NWSW.

T43N, R31W, SEC. 14, SENE,SE.

T43N, R31W, SEC. 24, N1/2SE.

Iron County, Advertised Price \$38,674.70, 131.8 Acres, Sugar Maple, Hardwood.

SALE NOTE: Access to Payment Unit 3 may require temporary culverts/crossing and a permit.

A recreation site such as a trail, pathway, or campground is within the sale area or the vicinity. Certain restrictions/specifications may be applicable including time restrictions.

BID INSTRUCTIONS (VER. 10/10/2022):

1. Scheduled Bid Location, Date, and Time (2/11)

Bids must be received by the Unit Manager, BARAGA OFFICE, 427 US 41 North, Baraga, MI 49908, no later than 9:00 a.m. (local time) on January 8, 2026. For further information concerning this sale, contact Brad Carlson at 906-353-6651.

2. Bidder's Qualifications (10/22)

If all or part of a timber sale was prepared by a private contractor, the contractor and that contractor's company are not permitted to bid on the timber sale. A person must be 18 years of age or older to purchase timber. Permanent employees of the Department of Natural Resources or members of their immediate household may not bid. Former employees, in the permanent or seasonal class, may not bid until 3 months after the last day of active duty. Bids will not be accepted from individuals or companies appearing on the DNR/FRD No-Bid List. This list contains the names of purchasers who previously failed to execute a contract within 21-days or who have a history of poor performance.

3. Preparation of Sealed Bids (5/16)

Bid Forms may be completed online thru Michigan DNR Timber Sale Online Bidding (OLB) at www.michigan.gov/timberbidding or by completing the hardcopy Bid Form found in the Timber Sale Prospectus. Hardcopy Bid Forms shall be manually signed in ink. Registration in OLB is considered your 'signature' for all bids submitted thru that system. Bid prices must be entered for each species and product in the Bid Price column for all material subject to bidding and all fill-in blanks must be completed. If erasures or other changes appear on the hardcopy Bid Form, each erasure or change must be initialed by the person signing the bid.

4. Submission of Sealed Bids (5/16)

Bid forms may be obtained from the Unit Manager or thru OLB. Bids may be submitted hardcopy or thru OLB. All hardcopy bids must be submitted on the bid form and in an envelope clearly identified as described in this section. NOTE: Only one bid form per bid envelope. Sealed bids must be submitted to the Unit office designated in the prospectus and must be submitted at or prior to the time established in the prospectus. The envelope should show on the outside (a) the sale name or number and (b) the date and time of bid opening, as shown in the prospectus. Bids received after the time specified in the sale prospectus are late bids and will be rejected.

It is possible for a bidder to submit multiple bids on a single sale. For example, a bid may be submitted hardcopy and a bid may be submitted thru OLB. Or, two bidders from the same company could both submit bids on the same sale. If this were to happen, the State would accept all bids received and award the contract accordingly. All bidding and contractual requirements would apply to all bids received.

5. Public Opening of Sealed Bids (7/16)

If conditions permit, the sealed bids will be publicly opened and posted at the time and place set in the prospectus.

If a bidder, present at a bid opening, has submitted bids on more than one sale, that bidder may withdraw their unopened bid envelopes or announce the withdrawal of their online bid after being declared the successful bidder on one sale.

6. Award of Contract (1/11)

Award of the contract will be made to the Bidder whose bid, conforming to the prospectus, is most advantageous to the State of Michigan on the basis of total value at rates bid for the estimated quantities. The State reserves the right to reject any bid or waive any minor irregularity in bids received. A written award mailed (or otherwise furnished) to the successful Bidder shall be deemed to result in a binding contract without further action by either party.

7. Down Payment (1/11)

The Bidder to whom award is made must make a down payment within 21 days of the sale award. The amount of the down payment will be calculated as shown in the Bond and Payment Schedule of this prospectus. Only cash may be used to meet this requirement.

8. Performance Security (1/11)

As guarantee of faithful performance, a cash bond, certificate of deposit, surety bond or irrevocable letter of credit (LOC) is required within 21 days of the sale award. The amount of the performance security is shown in the Bond and

Payment Schedule of this prospectus. If an LOC or surety is used, the coverage must extend for at least 6 months beyond the contract expiration.

9. Worker's Compensation (10/22)

Purchaser shall obtain worker's compensation insurance to cover claims under Michigan's Worker's Disability Compensation Act of 1969 or similar employee benefit act of any other state applicable to an employee. Verification of Worker's Disability Compensation Act Compliance must be completed and submitted within 21 days of contract award and prior to the issuance of the timber sale contract. In addition, if applicable, Notice of Exclusion or Certificate of Insurance must also be submitted.

10. Timber Sale Contract (10/22)

Additional conditions and requirements common to all timber sales are listed on the timber sale contract (R4031) and are available on line at www.michigan.gov/timber. Contact the Unit Manager for additional information or a sample contract. Within 21 days of the date of the award letter, the bidder must sign the contract and provide the required down payment, performance security, and verification of worker's disability compensation. The down payment and performance security shall be in accordance with the provisions of the timber sale contract, in the sums stated in this prospectus. If these actions are not taken, then the Bidder, the Bidder's corporation, and the corporation's principals may not be permitted to bid on State timber sales for a period of 3 months after the first offense, 6 months after the second offense, and 1 year after the third offense. An offense will only be counted against the Bidder for 5 years. In addition, the Bidder certifies that if awarded this contract, the Bidder will complete the timber sale contract in accordance with its terms and any modifications thereof including requirements to purchase, cut, and remove the included timber by the expiration date.

Payment Unit values in the State Forest Timber Sale Contract are calculated based on the advertised value of the Payment Unit as a percentage of the total advertised value of the contract. The advertised value of each Payment Unit is given in the Description of Timber by Payment Unit table on the Timber Sale Information page. For example, if the value of Payment Unit 1 is advertised as \$1,500 and the total Timber Sale value is advertised as \$10,000, the contract price for Payment Unit 1 will be 15% of the total bid price ($\$1,500/\$10,000 * 100$).

11. Disclaimer of Estimates and Bidder's Warranty of Inspection (10/22)

Before submitting this bid, the Bidder is advised and cautioned to inspect the sale area, review the requirements of the sale contract, and take other steps as may be reasonably necessary to ascertain the location, estimated volumes, construction estimates, and operating costs of the proposed sale. Failure to do so will not relieve the Bidder from responsibility for completing the contract.

The Bidder warrants that this bid is submitted solely on the basis of the Bidder's examination and inspection of the quality and quantity of the timber offered for sale and the Bidder's opinion of the value thereof and the costs of recovery. No reliance should be placed on the State of Michigan's estimates of timber quality, quantity or costs of recovery. Bidder further acknowledges that the State of Michigan: (i) expressly disclaims any warranty of fitness of timber for any purpose; (ii) offers this timber as is without any warranty of quality (merchantability) or quantity and (iii) expressly disclaims any warranty as to the quantity or quality of timber sold.

12. Certification and Chain-of-Custody (10/22)

Unless otherwise indicated in the contract under section 7 – Other Conditions of the Sale Specific Conditions & Requirements, the area encompassed by this timber sale is certified to the standards of the Forest Stewardship Council (FSC) - Certificate #SCS-FM/COC-00090N and the Sustainable Forestry Initiative (SFI) - Certificate #NSF-SFIS-5Y031-SF5. Forest products from this sale may be delivered to the mill as "FSC 100% and / or SFI certified" as long as the contractor hauling the forest products is chain-of-custody (COC) certified or covered under a COC certificate from the destination mill. The purchaser is responsible for maintaining COC after leaving the sale area.

13. Good Neighbor Authority (GNA) Requirements (10/22)

If the name of this timber sales contains the acronym GNA, it is authorized by the Good Neighbor Authority (GNA) and covered by various agreements between the U.S. Forest Service and the State. The timber sale occurs on federal land and the following conditions apply:

GNA contracts on US Forest Service land will not be awarded to purchasers on the Federal list of excluded parties. The System for Award Management (SAM) will be checked for active excluded parties prior to award of contract. In

addition, the Bidder to whom award is made must complete an Assurance Regarding Felony Conviction or Tax Delinquent Status for Corporate Applicants (AD-3031).

14. Good Neighbor Authority (GNA) Requirements, con't (10/22)

Bidder certifies, by signing this bid form, that to the best of Bidder's knowledge that the following representations are accurate and complete.

- a. That the Bidder and its principals are not presently debarred, suspended, proposed for debarment, declared ineligible, or voluntary excluded from timber sales (covered transactions) by any Federal department or agency.
- b. That the Bidder and its principals have not within a 3-year period preceding this bid been convicted of or had a civil judgment rendered against them for commission of fraud or a criminal offense in connection with obtaining , attempting to obtain, or performing a public (Federal, State, or local) transaction or contract under a public transaction; violation of Federal or State antitrust statutes or commission of embezzlement, theft, forgery, bribery, falsification or destruction of records, making false statements, or receiving stolen property.
- c. That the Bidder and its principals are not presently indicted for or otherwise criminally or civilly charged by a governmental entity (Federal, State, or local) with commission of any of the offenses enumerated in paragraph b of this certification.
- d. That the Bidder and its principals have not within a 3-year period preceding this bid had one or more public transactions (Federal, State, or local) terminated for breach or default of a timber or forest product contract.

Bidders that cannot certify this requirement, in whole or in part, shall submit an explanation with their bid.

Scott Bowen
Director

TIMBER SALE INFORMATION

Saltu Acta (11-011-26)

T51N, R37W, SEC. 10.

Ontonagon County (Advertised Price \$81,419.55)

A timber sale contract for this lump sum, sealed bid timber sale will be awarded to the responsible bidder offering the highest sealed bid price. All units of volume listed below were estimated using the Inventory Manager computer program and the new Michigan taper model. Bids must be at or above the following advertised price for each product and species:

<u>PRODUCTS & SPECIES</u>	<u>ESTIMATED UNITS*</u>	<u>ADVERTISED PRICE</u>
Sawtimber		
Basswood	50.9 MBF	\$ 58.00 / MBF
Red Maple	19.8 MBF	\$ 177.00 / MBF
Sugar Maple	181.5 MBF	\$ 311.00 / MBF
Yellow Birch	0.9 MBF	\$ 128.00 / MBF
Pulpwood		
Balsam Fir	4 Cords	\$ 5.25 / Cord
Basswood	166 Cords	\$ 5.55 / Cord
Mixed Hardwood	1,343 Cords	\$ 12.95 / Cord
Mixed Spruce	6 Cords	\$ 11.15 / Cord

* The total volume is statistically estimated within plus (+) or minus (-) 15.80 percent. There are an estimated 2, 112 cords on this timber sale, plus or minus 334 cords at the 95% confidence level. The estimated units are final and not subject to adjustment. Prospective bidders are urged to examine this timber and to make their own estimates of quantity and quality.

BOND AND PAYMENT SCHEDULE:

1. A bond in the amount of \$8,142.00 to insure faithful performance of the conditions of the contract will be deposited by the successful bidder within 21 days of the sale award.
2. Cutting in any sale or unit without the required advance payment would be considered a trespass.
3. Total payment must be paid in advance or according to the following schedule :
 - (a) Ten percent (10%) of the sale value must be paid within 21 days of the sale award.
 - (b) The 10% down payment will be credited towards the first unit cut.
 - (c) Payment for each of the following units must be made before cutting begins in that unit:

PAYMENT UNIT NUMBER	PERCENT OF TOTAL SALE VALUE
01	17.8%
02	17.3%
03	21.3%
04	20.0%
05	23.6%
4. If no cutting takes place, the 10% down payment will not be refunded.
5. Operations on the contract issued will terminate on 06/30/2029.

SALE STATISTICS

Volumes were calculated in cubic feet using the Michigan taper model. Cubic foot volume includes all wood inside bark for the product indicated. For display purposes, cubic feet were converted to cords and MBF using a simple conversion factor, e.g. 79 cubic feet per cord and 185 cubic feet per MBF. The cubic foot volumes are precise; the cords and MBF volumes are not. Cubic foot volume cannot be directly converted to cords or boards with precision.

SALE VOLUMES

The total estimated sale volume may not equal the sum of the species/products due to the nature of statistical calculations associated with double sampling methodology.

VOLUME			STATISTICAL RANGE IN CORDS	
TOTAL CUBIC FEET	TOTAL CORDS	PERCENT ERROR	MINIMUM	MAXIMUM
166,873	2,112	15.80%	1,778	2,446

VDU VOLUMES

A VDU is a Volume Determination Unit. Volumes and their associated statistics are calculated at the VDU level and summarized to the sale level. There is often a one to one relationship between a VDU and a Payment Unit, but not always, depending on the cruise design. Refer to the VDU TO PAYMENT UNIT table.

	VOLUME			RANGE IN CORDS	
VDU	TOTAL CUBIC FEET	TOTAL CORDS	PERCENT ERROR	MINIMUM	MAXIMUM
17	159,146	2,015	16.40%	1,684	2,345
19	7,727	98	54.74%	44	151
TOTAL:	166,873	2,112		1,728	2,496

VDU TO PAYMENT UNIT

When a VDU is associated with more than one Payment Unit (PU), the VDU volumes are assigned to the PU based on acres of the VDU within the PU.

VDU	VDU ACRES	PU	PU ACRES
TOTAL:			

DESCRIPTION OF TIMBER BY PAYMENT UNIT (PU)

PU	MARKET GROUP	PRODUCT	QUANTITY	UNIT	ACRES	ADVERTISE PRICE
1	Basswood	Sawtimber	9.7	MBF	42.5	\$14,452.70
	Red Maple		4.1	MBF		
	Sugar Maple		30.6	MBF		
	Yellow Birch		0.1	MBF		
	Balsam Fir	Pulpwood	1	Cords		
	Basswood		43	Cords		
	Mixed Hardwood		261	Cords		
	<i>Red Maple</i>		33	<i>Cords</i>		
	<i>Red Oak</i>		2	<i>Cords</i>		
	<i>Sugar Maple</i>		222	<i>Cords</i>		
	<i>Yellow Birch</i>		4	<i>Cords</i>		
	Mixed Spruce		1	Cords		
	<i>White Spruce</i>		1	<i>Cords</i>		
2	Basswood	Sawtimber	8.7	MBF	34.3	\$14,086.30
	Red Maple		3.3	MBF		
	Sugar Maple		31.7	MBF		
	Yellow Birch		0.2	MBF		
	Balsam Fir	Pulpwood	1	Cords		
	Basswood		26	Cords		
	Mixed Hardwood		228	Cords		
	<i>Red Maple</i>		26	<i>Cords</i>		
	<i>Red Oak</i>		2	<i>Cords</i>		
	<i>Sugar Maple</i>		196	<i>Cords</i>		
	<i>Yellow Birch</i>		4	<i>Cords</i>		
	Mixed Spruce		1	Cords		
	<i>White Spruce</i>		1	<i>Cords</i>		
3	Basswood	Sawtimber	10.7	MBF	42.2	\$17,320.90
	Red Maple		4.1	MBF		
	Sugar Maple		39.0	MBF		
	Yellow Birch		0.2	MBF		
	Balsam Fir	Pulpwood	1	Cords		
	Basswood		32	Cords		
	Mixed Hardwood		280	Cords		
	<i>Red Maple</i>		31	<i>Cords</i>		
	<i>Red Oak</i>		3	<i>Cords</i>		
	<i>Sugar Maple</i>		241	<i>Cords</i>		
	<i>Yellow Birch</i>		5	<i>Cords</i>		
	Mixed Spruce		1	Cords		
	<i>White Spruce</i>		1	<i>Cords</i>		
4	Basswood	Sawtimber	10.0	MBF	39.6	\$16,249.55
	Red Maple		3.8	MBF		
	Sugar Maple		36.6	MBF		
	Yellow Birch		0.2	MBF		
	Balsam Fir	Pulpwood	1	Cords		
	Basswood		30	Cords		
	Mixed Hardwood		263	Cords		
	<i>Red Maple</i>		30	<i>Cords</i>		
	<i>Red Oak</i>		2	<i>Cords</i>		
	<i>Sugar Maple</i>		226	<i>Cords</i>		
	<i>Yellow Birch</i>		5	<i>Cords</i>		
	Mixed Spruce		1	Cords		
	<i>White Spruce</i>		1	<i>Cords</i>		
5	Basswood	Sawtimber	11.8	MBF	47.2	\$19,310.10
	Red Maple		4.5	MBF		
	Sugar Maple		43.6	MBF		
	Yellow Birch		0.2	MBF		

DESCRIPTION OF TIMBER BY PAYMENT UNIT (PU), CON'T

PU	MARKET GROUP	PRODUCT	QUANTITY	UNIT	ACRES	ADVERTISE PRICE
5 con't	Basswood	Pulpwood	35	Cords		
	Mixed Hardwood		311	Cords		
	Red Maple		35	Cords		
	Red Oak		3	Cords		
	Sugar Maple		268	Cords		
	Yellow Birch		5	Cords		
	Mixed Spruce		2	Cords		
	White Spruce		2	Cords		
TOTAL:			253.1	MBF		
TOTAL:			1,519	Cords		

Sale Specific Conditions & Requirements

Sale Name: Saltu Acta

Sale Number: 11-011-26 Seq#: 1

1 - Sale Area

1.2 - Boundaries

1.2.1 - Painted Boundaries (9/19)

The Sale Boundary and Payment Unit boundaries are marked and identified by red and blue paint. Exterior Sale Boundary lines against private property are marked with blue paint. Exterior Sale Boundary lines against state property are marked with red paint. Interior Payment Unit lines are marked with red paint. The painted boundary line trees are not Included Timber and are to be protected unless marked with orange paint. Red painted trees designating an interior Payment Unit boundary are only to be cut when all surrounding Payment Units have been paid.

2 - Timber Specifications

2.1 - Included Timber

2.1.3 - Cut Tree Marked Unit(s) (12/08)

Within Payment Unit(s) 1, 2, 3, 4, & 5, all trees are designated for cutting when marked with orange paint above and below stump height, regardless of merchantability.

2.1.11 - Description of Timber Note (2/04)

Note that the volume determination for this sale was obtained from a cruise that was conducted during the fall of 2025. Any changes in volume from the time of that cruise are not accounted for.

2.2 - Utilization

2.2.4 - Skidding Length (12/24)

Skidding of unlimbed tops or lengths over 17 feet is not permissible unless approved by the Unit Manager or his/her representative.

2.2.7 - Uncut Designated Trees (2/04)

Liquidated damages of \$10.00 per tree will be assessed for every marked tree not cut.

3 - Payments

3.4 - Damaged Timber

3.4.1 - Damaged Timber (12/24)

General Condition and Requirement 3.4 Damaged Timber, defines liquidated damages for undesignated live merchantable trees which are cut or injured. In addition, extreme care should be taken to avoid damage to tree seedlings and saplings. No damage is acceptable to undesignated live merchantable trees. Within the Sale Area, if more than 5% of trees (> 4.5" DBH) within a specified area of the sale are damaged, liquidated damages will be assessed for all trees damaged. Rates will be in accordance with General Condition and Requirement 3.4 Damaged Timber. Note: Trees within 10 feet of ruts exceeding 6 inches deep will be considered damaged due to damage caused to the tree roots and will be billed in accordance with 3.4 Damaged Timber (see spec 5.4.1).

4 - Transportation

4.1 - Construction

4.1.1 - Stream Crossings, General (1/25)

All stream crossing structures will be temporary and, therefore, shall be provided by the Purchaser and must be removed upon completion of the sale. All permits for stream crossings will be provided by the DNR for crossings located on state land. The purchaser shall notify the DNR 90 days prior to working on any crossing that will require an EGLE permit.

4.1.3 - Slash and Earthen Piles (8/04)

Piles or windrows of earth along roads and landings that have been widened or constructed shall be leveled. Slash from road maintenance or construction, including stumps, shall be dispersed throughout the sale, chipped, utilized or otherwise removed from the sale.

4.1.5 - Culverts (5/14)

Roads may require the installation of culverts for cross drainage or at natural drainage-ways. If culverts are needed in these locations, their placement will be specified by the Sale Administrator and they shall be installed prior to hauling. The culverts shall be new, corrugated metal or plastic gauge. Culverts will be a minimum of 12 inches in diameter and 24 feet in length. If culverts are removed, fill shall be removed from wetland soils as specified. Soils shall be maintained and left in a non-erodible condition, with water bars, seed, fertilizer, mulch, and slash installed as directed by the sale administrator and as specified in the BMP manual. Stream crossing permits, if needed, will be obtained by the DNR for crossings located on state land. The purchaser shall notify the DNR 90 days prior to working on any crossing that will require a EGLE permit.

4.1.7 - Road Closure (10/11)

All new roads built into the sale must be blocked to vehicle traffic upon completion of the sale. Overgrown roads that are reopened shall be considered new roads. In general, this will require constructing a four (4') foot high berm of stumps and logs covered with earth. Contact the Sale Administrator for specific details of design and placement.

4.2 - Maintenance

4.2.2 - Fill Material (4/07)

To maintain roads, fill material may be needed in areas where "holes" exist or may be expected to develop. This fill material should be placed before trucking begins.

4.2.5 - Two Wheel Drive Condition (2/04)

All existing trail roads on and adjacent to the Sale Area must be passable by two-wheel drive traffic for the duration of the sale.

4.4 - Access

4.4.1 - Private property access (3/11)

Permission for access across private land is the responsibility of the Purchaser. Should the Purchaser desire to cross private land, a copy of the written permission from the private landowner must be given to the Unit Manager within 30 days of the bid opening and prior to the beginning of operations if the purchaser desires to access the sale on roads where the state does not hold easement.

5 - Operations

5.1 - Notification

5.1.1 - Pre-sale Conference (10/16)

A pre-sale conference between the Purchaser and Sale Administrator is required prior to beginning any operations. The Unit Manager or his/her representative must be contacted at least 10 days in advance to schedule the conference.

5.1.4 - Post-Sale Conference (10/16)

A post-sale conference on site between the Purchaser and sale administrator is required 5 days prior to the completion of active logging operations to determine clean-up and repair of landings, road edges, and the fulfillment of other contract specifications.

5.2 - Conduct of Operations

5.2.1 - Slash

5.2.1.1 - Slash Within Sale Area (9/16)

No trees are to be felled outside the Sale Area, and all slash is to be kept at least 10 feet back from the blue paint line. If sale boundary lines are along a public road or highway, then slash must be removed 50' from these lines per General Condition & Requirement 5.2.1.

5.2.1.11 - Slash for Reforestation (3/21)

To facilitate reforestation, the Sale Area shall be left with slash evenly distributed. Bunched tops within the cutting area shall be broken up and scattered. Stumps shall be cut low to the ground. Processing sites shall not be left with a compacted layer of slash; tops from these sites shall be hauled back into the cut area and scattered.

5.2.2 - Hazard Trees/Snags

5.2.2.1 - Den Trees (10/16)

Obvious hollow and/or den trees shall be protected and left standing unless they are a safety hazard.

5.2.3 - Operating Restrictions

5.2.3.2 - Operating Restrictions (9/11)

Within Payment Unit(s) 1, 2, 3, 4 & 5, unless changed by written agreement, all cleanup activities must be completed by June 30 for all areas that were harvested during the previous harvest season. This restriction is to allow the harvest area to revegetate before the dry season.

5.2.3.3 - Bark Slippage Restriction (3/09)

Within Payment Unit(s) 1, 2, 3, 4, & 5, unless changed by written agreement, cutting and skidding are not permitted during the period of April 15 to July 15. This restriction is because of bark slippage.

5.2.17 - Timber Mats and Interlocking Composite Mats (5/23)

Some roads or skid trails may require extra protection such as that afforded by timber mats, interlocking composite mats, or another approved system. If available, mats may be borrowed from the DNR. A Timber Sale Contract Amendment will be used to document the Purchaser's use of the DNR's mats. Contact the Sale Administrator regarding availability and pick-up. Timber mats are available from various field offices. Composite mats are only available from the Grayling field office and the Marquette ICC. The Purchaser is responsible for picking up and hauling the mats to and from the site. The composite mats will require DNR staff onsite for installation and removal. Contact the Sale Administrator to schedule at least 30 days before desired install/removal date. All mats must be cleaned prior to drop off. This may include, but is not limited to, power washing and brushing to remove mud and debris. A charge of \$700.00 per timber mat and \$2,000.00 per composite mat will be assessed for all damaged or non-returned mats. Damage for the crane/timber mats is defined as three or more broken cants. Damage for the composite mats is defined as cracked or broken mats.

5.2.30 - Landing/Road Topsoil Protection (1/25)

Topsoil must be removed, stockpiled, and saved. Upon completion of the timber sale, soil must be evenly distributed back over the area for revegetation.

5.2.32 - Decking/Landing Restoration (9/13)

All decking and landing areas must have the surface area restored to a condition equal to or better than before. This is to ensure the proper regeneration of the stand. Wood debris, chips and "cookies" from trimmings must be removed or scattered away from landing and loading areas and may not be windrowed on the edge.

5.2.38 - No Decking Against Live Trees (2/04)

Cut products may not be decked against unmarked or designated leave trees.

5.2.39 - ORV Trail/Route Protection (4/18)

The UP Trail 13 is an ORV trail or route and is shown on the Timber Sale Map. The trail is located on Bill Nicholls Trail. If the trail is used, it must be maintained and restored to a condition equal to or better than before the sale. Do not cut trees or damage posts with yellow ORV markers. If the trail is used for hauling, it must be graded to the satisfaction of the Unit Manager or his/her representative prior to December 1. Do not run equipment down the ORV trail or route.

5.2.41 - Snowmobile Trail Protection (9/11)

The UP Trail 13 is a snowmobile trail and is shown on the Timber Sale Map. The trail is located on Bill Nicholls Trail. Do not cut or damage posts with orange trail markers or traffic control signs. The road maintenance/restoration must be done prior to December 1. If the trail road is to be used for hauling during the snowmobile season, then a snow-covered base must be left on the trail. The snowmobile trail may not be used for any timber sale operations from December 1 to March 31. No decking of forest products will be permitted along the snowmobile trail.

5.4 - Soil Protection

5.4.1 - Rutting Restriction, General (7/16)

Operations are to cease immediately if equipment and weather conditions result in rutting of roads and/or skid trails which is 6 inches or greater in depth and 50 feet in length. Note: Trees within 10 feet of ruts exceeding 6 inches deep will be considered damaged due to damage caused to the tree roots and will be billed in accordance with 3.4 Damaged Timber (see spec 5.4.1). The Unit Manager or his/her representative may restrict hauling and/or skidding if ruts exceed the specified depth. With the Unit Manager or his/her representative's approval, the Purchaser may return to the area when the risk of rutting has decreased.

5.4.2 - Skid Trails (2/04)

Skid trails up and down slopes should be avoided. If, however, this is unavoidable, these trails will be left in a non-erodible condition using water bars, logs, and slash. Placing of slash on these skid trails while logging is ongoing may alleviate need for any further action. At the direction of the Sale Administrator, seed, fertilizer, and mulch may also be required.

5.8 - Protection of Endangered Species

5.8.5 - Protection of Raptor Nests (3/13)

All trees with raptor nests will be protected if found during harvesting operations. Notification will be made to the Unit Manager or his/her representative who will notify the Wildlife Biologist so an onsite evaluation and recommendation can be made, if necessary.

6 - Safety and Fire Prevention

6.2 - Signing

6.2.1 - Road Posting (10/20)

The Purchaser is responsible for posting and maintaining caution signs on Bill Nicholls Trail prior to beginning operations. The road must be posted at appropriate distances from the Sale Area to warn of logging activity and truck traffic. Signs must be removed when harvest operations are suspended or completed. The Purchaser will provide these signs.



TIMBER SALE MAP

This information provided by authority of Part 525, 1994 PA 451, as amended.

Sale Number

11-011-26

Date

10/15/2025

Forest Management Unit

Baraga Mgt Unit

County

Ontonagon

Mapped By: Betz, Dorvinen

Cruised By: Dorvinen, Hansen

Scale

1:15,840

Page

1

Of

1

Township
51N

Range
37W

Section(s) and
Subdivision(s) Sec. 10 NW,NE;

Cover Type

A = Aspen	J = Jack Pine	O = Oak	U = Upland Brush
B = Paper Birch	K = Rock	P = Lowland Poplar	UM = Upland Mix Forest
C = Cedar	L = Lowland Brush	Q = Mixed Swamp Conifer	V = Bog or Marsh
D = Treed Bog	LM = Lowland Mix Forest	R = Red Pine	W = White Pine
E = Swamp Hardwoods	M = Maple, Beech, Birch	S = Black Spruce	X = Non Stocked
F = Spruce/Fir	MC = Mixed Conifer	T = Tamarack	Y = Sand
G = Grass	MD = Mixed Deciduous		Z = Water
H = Hemlock	N = Marsh		

Density

0 = Non Stocked	5 = Pole Timber Medium
1 = Seedling Sapling Poor	6 = Pole Timber Well
2 = Seedling Sapling Medium	7 = Saw Timber Poor
3 = Seedling Sapling Well	8 = Saw Timber Medium
4 = Pole Timber Poor	9 = Saw Timber Well

Saltu Acta

Baraga - Compartment 67

UNIT	1	2	3	4	5	TOTALS
ACRES	42.5	34.3	42.2	39.6	47	205.8

Sawlogs MBF

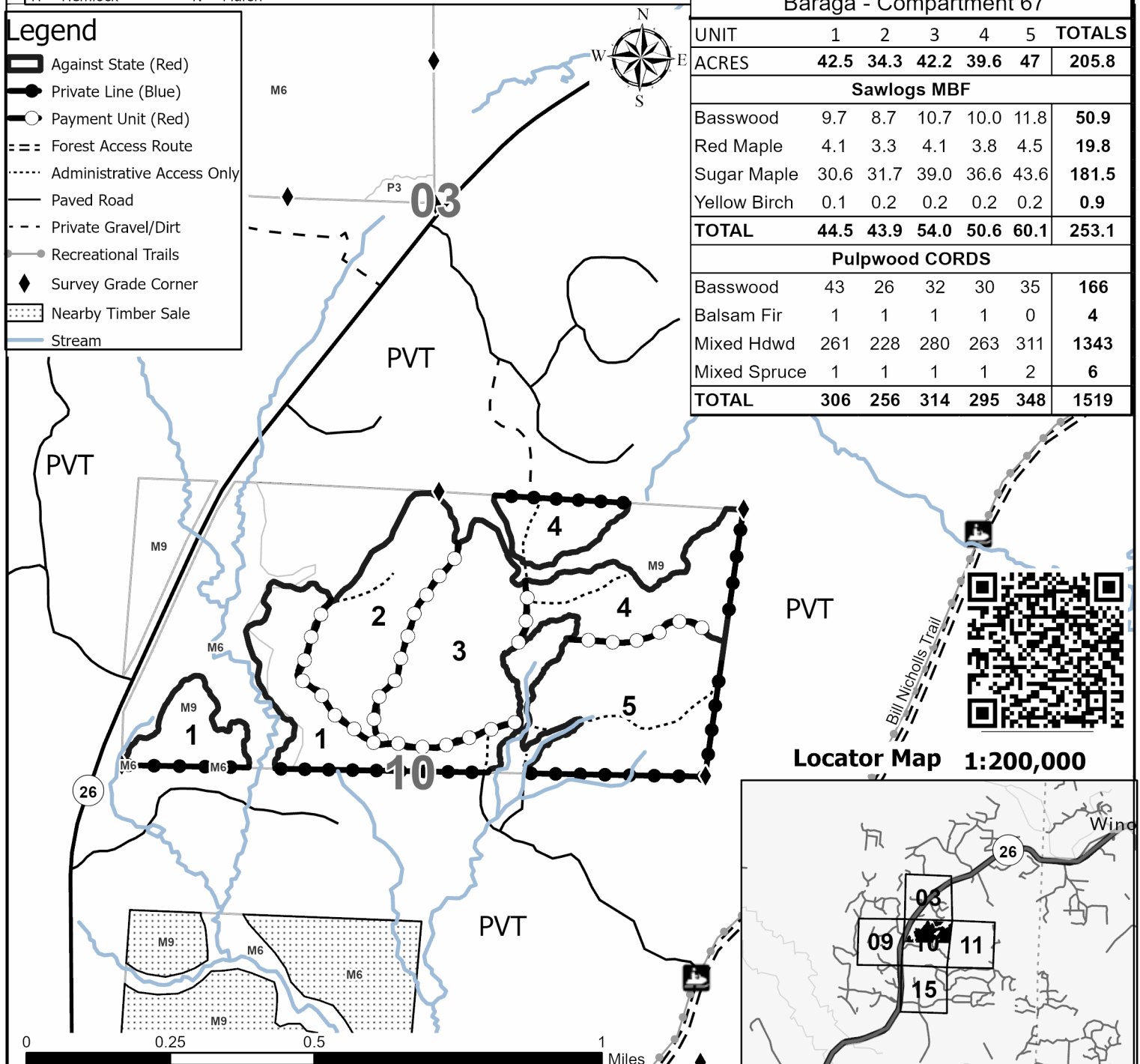
Basswood	9.7	8.7	10.7	10.0	11.8	50.9
Red Maple	4.1	3.3	4.1	3.8	4.5	19.8
Sugar Maple	30.6	31.7	39.0	36.6	43.6	181.5
Yellow Birch	0.1	0.2	0.2	0.2	0.2	0.9
TOTAL	44.5	43.9	54.0	50.6	60.1	253.1

Pulpwood CORDS

Basswood	43	26	32	30	35	166
Balsam Fir	1	1	1	1	0	4
Mixed Hdwd	261	228	280	263	311	1343
Mixed Spruce	1	1	1	1	2	6
TOTAL	306	256	314	295	348	1519

Legend

- Against State (Red)
- Private Line (Blue)
- Payment Unit (Red)
- Forest Access Route
- Administrative Access Only
- Paved Road
- Private Gravel/Dirt
- Recreational Trails
- Survey Grade Corner
- Nearby Timber Sale
- Stream



TIMBER SALE INFORMATION

Yeo Yeo Mix 26 (11-017-26)

T52N, R29W, SEC. 18; T52N, R30W, SEC. 13.
Marquette County (Advertised Price \$92,807.40)

SALE NOTE: Access may be through private land.

A timber sale contract for this lump sum, sealed bid timber sale will be awarded to the responsible bidder offering the highest sealed bid price. All units of volume listed below were estimated using the Inventory Manager computer program and the new Michigan taper model. Bids must be at or above the following advertised price for each product and species:

<u>PRODUCTS & SPECIES</u>	<u>ESTIMATED UNITS*</u>	<u>ADVERTISED PRICE</u>
Sawtimber		
Black Ash	2.2 MBF	\$ 33.00 / MBF
Paper Birch	38.6 MBF	\$ 83.00 / MBF
Red Maple	115.4 MBF	\$ 177.00 / MBF
Sugar Maple	134.6 MBF	\$ 311.00 / MBF
White Ash	60.8 MBF	\$ 54.00 / MBF
Yellow Birch	17.1 MBF	\$ 128.00 / MBF
Pulpwood		
Mixed Aspen	174 Cords	\$ 18.70 / Cord
Mixed Hardwood	1,320 Cords	\$ 12.95 / Cord
Paper Birch	274 Cords	\$ 5.20 / Cord

* The total volume is statistically estimated within plus (+) or minus (-) 18.13 percent. There are an estimated 2,631 cords on this timber sale, plus or minus 477 cords at the 95% confidence level. The estimated units are final and not subject to adjustment. Prospective bidders are urged to examine this timber and to make their own estimates of quantity and quality.

BOND AND PAYMENT SCHEDULE:

- A bond in the amount of \$9,000.00 to insure faithful performance of the conditions of the contract will be deposited by the successful bidder within 21 days of the sale award.
- Cutting in any sale or unit without the required advance payment would be considered a trespass.
- Total payment must be paid in advance or according to the following schedule :
 - Ten percent (10%) of the sale value must be paid within 21 days of the sale award.
 - The 10% down payment will be credited towards the first unit cut.
 - Payment for each of the following units must be made before cutting begins in that unit:

PAYMENT UNIT NUMBER	PERCENT OF TOTAL SALE VALUE
01	30.0%
02	29.2%
03	24.4%
04	16.4%
- If no cutting takes place, the 10% down payment will not be refunded.
- Operations on the contract issued will terminate on 06/30/2029.

SALE STATISTICS

Volumes were calculated in cubic feet using the Michigan taper model. Cubic foot volume includes all wood inside bark for the product indicated. For display purposes, cubic feet were converted to cords and MBF using a simple conversion factor, e.g. 79 cubic feet per cord and 185 cubic feet per MBF. The cubic foot volumes are precise; the cords and MBF volumes are not. Cubic foot volume cannot be directly converted to cords or boards with precision.

SALE VOLUMES

The total estimated sale volume may not equal the sum of the species/products due to the nature of statistical calculations associated with double sampling methodology.

VOLUME			STATISTICAL RANGE IN CORDS	
TOTAL CUBIC FEET	TOTAL CORDS	PERCENT ERROR	MINIMUM	MAXIMUM
207,837	2,631	18.13%	2,154	3,108

VDU VOLUMES

A VDU is a Volume Determination Unit. Volumes and their associated statistics are calculated at the VDU level and summarized to the sale level. There is often a one to one relationship between a VDU and a Payment Unit, but not always, depending on the cruise design. Refer to the VDU TO PAYMENT UNIT table.

	VOLUME			RANGE IN CORDS	
VDU	TOTAL CUBIC FEET	TOTAL CORDS	PERCENT ERROR	MINIMUM	MAXIMUM
13	128,040	1,621	18.12%	1,327	1,914
32	79,797	1,010	38.77%	619	1,402
TOTAL:	207,837	2,631		1,946	3,316

VDU TO PAYMENT UNIT

When a VDU is associated with more than one Payment Unit (PU), the VDU volumes are assigned to the PU based on acres of the VDU within the PU.

VDU	VDU ACRES	PU	PU ACRES
TOTAL:			

DESCRIPTION OF TIMBER BY PAYMENT UNIT (PU)

PU	MARKET GROUP	PRODUCT	QUANTITY	UNIT	ACRES	ADVERTISE PRICE
1	Black Ash	Sawtimber	0.9	MBF	59.7	\$27,822.50
	Paper Birch		3.0	MBF		
	Red Maple		30.5	MBF		
	Sugar Maple		48.6	MBF		
	White Ash		24.1	MBF		
	Yellow Birch		6.8	MBF		
	Mixed Hardwood		374	Cords		
	Black Ash	Pulpwood	1	Cords		
	Ironwood		3	Cords		
	Red Maple		83	Cords		
	Sugar Maple		202	Cords		
	White Ash		19	Cords		
	Yellow Birch		66	Cords		
	Paper Birch		3	Cords		
2	Black Ash	Sawtimber	0.8	MBF	58.1	\$27,095.65
	Paper Birch		2.9	MBF		
	Red Maple		29.7	MBF		
	Sugar Maple		47.4	MBF		
	White Ash		23.5	MBF		
	Yellow Birch		6.6	MBF		
	Mixed Hardwood		363	Cords		
	Black Ash	Pulpwood	1	Cords		
	Ironwood		3	Cords		
	Red Maple		80	Cords		
	Sugar Maple		196	Cords		
	White Ash		19	Cords		
	Yellow Birch		64	Cords		
	Paper Birch		3	Cords		
3	Paper Birch	Sawtimber	31.0	MBF	38.3	\$22,646.40
	Red Maple		38.5	MBF		
	Sugar Maple		11.9	MBF		
	Mixed Aspen	Pulpwood	174	Cords		
	B. T. Aspen		174	Cords		
	Mixed Hardwood		380	Cords		
	Red Maple		223	Cords		
	Sugar Maple		105	Cords		
	Yellow Birch		52	Cords		
	Paper Birch		266	Cords		
4	Black Ash	Sawtimber	0.5	MBF	32.7	\$15,242.85
	Paper Birch		1.7	MBF		
	Red Maple		16.7	MBF		
	Sugar Maple		26.7	MBF		
	White Ash		13.2	MBF		
	Yellow Birch		3.7	MBF		
	Mixed Hardwood	Pulpwood	203	Cords		
	Ironwood		2	Cords		
	Red Maple		45	Cords		
	Sugar Maple		110	Cords		
	White Ash		10	Cords		
	Yellow Birch		36	Cords		
	Paper Birch		2	Cords		
	TOTAL:			368.7		
TOTAL:			1,768	Cords		

Sale Specific Conditions & Requirements

Sale Name: Yeo Yeo Mix 26

Sale Number: 11-017-26 Seq#: 1

1 - Sale Area

1.2 - Boundaries

1.2.1 - Painted Boundaries (9/19)

The sale boundary and Payment Unit boundaries are marked and identified by blue and red paint. Exterior sale boundary lines against private property are marked with blue paint. Exterior sale boundary lines against state are marked with red paint. Interior Payment Unit boundaries are marked with red paint. The painted boundary line trees are not Included Timber and are to be protected unless marked with orange paint. Red painted trees designating an interior Payment Unit boundary are only to be cut when all surrounding Payment Units have been paid.

2 - Timber Specifications

2.1 - Included Timber

2.1.2 - Clearcut Unit(s) w/o Unmerchantable Trees (8/11)

Within Payment Unit(s) 3, cut all trees which meet minimum piece specifications in 2.2 Utilization except hemlock, white pine, cedar, and red oak. Also, retain all yellow birch that are 20" DBH and greater. Paper birch that are marked with blue paint are to be retained.

2.1.3 - Cut Tree Marked Unit(s) (12/08)

Within Payment Unit(s) 1, 2 and 4, all trees are designated for cutting when marked with orange paint above and below stump height, regardless of merchantability.

2.1.11 - Description of Timber Note (2/04)

Note that the volume determination for this sale was obtained from a cruise that was conducted during the summer of 2022. Any changes in volume from the time of that cruise are not accounted for.

2.2 - Utilization

2.2.3 - Stump Heights (12/24)

Stump heights within the Sale Area shall not exceed 12 inches for trees greater than 10 inches at DBH and four (4) inches for trees smaller than 10 inches at DBH. A written waiver of this requirement may be obtained if wet summer weather makes winter logging necessary.

2.2.4 - Skidding Length (12/24)

Skidding of lengths over 17 feet is permissible as long as the Sale Administrator approves the method and machinery used. If at any point damage exceeds specification 3.4.1, all of the remaining wood must be skid in lengths less than 17 feet.

2.2.7 - Uncut Designated Trees (2/04)

Liquidated damages of \$10.00 per tree will be assessed for every marked tree not cut.

2.2.8 - Utilization and Removal (12/24)

All products meeting standards set forth in General Condition and Requirement 2.2 - Utilization must be removed from the Sale Area. This is because excessive woody debris inhibits regeneration.

2.2.11 - Chipping Restriction (9/14)

If chipping occurs on this sale, then no woody debris present on the ground at the start of the sale may be chipped. In addition, brush or chips may not be stored or stockpiled on site for more than 30 days.

3 - Payments

3.4 - Damaged Timber

3.4.1 - Damaged Timber (12/24)

General Condition and Requirement 3.4 Damaged Timber, defines liquidated damages for undesignated live merchantable trees which are cut or injured. In addition, extreme care should be taken to avoid damage to tree seedlings and saplings.

No damage is acceptable to undesignated live merchantable trees. Within the Sale Area, if more than 5% of trees (> 4.5" DBH) within a specified area of the sale are damaged, liquidated damages will be assessed for all trees damaged. Rates will be in accordance with General Condition and Requirement 3.4 Damaged Timber. Note that: trees within 10 feet of ruts exceeding 12" will be considered damage due to damage caused to the tree roots (see spec 5.4.1).

4 - Transportation

4.1 - Construction

4.1.1 - Stream Crossings, General (1/25)

All stream crossing structures will be temporary and, therefore, shall be provided by the Purchaser and must be removed upon completion of the sale. All permits for stream crossings will be provided by the DNR. for crossings located on state land. The purchaser shall notify the DNR 90 days prior to working on any crossing that will require a EGLE permit.

4.1.5 - Culverts (5/14)

Roads may require the installation of culverts for cross drainage or at natural drainage-ways. If culverts are needed in these locations, their placement will be specified by the Sale Administrator, and they shall be installed prior to hauling. The culverts shall be new, corrugated metal or plastic gauge. Culverts will be a minimum of 12 inches in diameter and 24 feet in length. If culverts are removed, fill shall be removed from wetland soils as specified. Soils shall be maintained and left in a non-erodible condition, with water bars, seed, fertilizer, mulch, and slash installed as directed by the Sale Administrator and as specified in the BMP manual. Stream crossing permits, if needed, will be obtained by the DNR for crossings located on state land. The purchaser shall notify the DNR 90 days prior to working on any crossing that will require a EGLE permit.

4.1.6 - Road Construction (4/24)

Construction of new roads or improvements of existing roads shall be done in such a way as to minimize the environmental and visual impacts. Merchantable trees shall be cut and utilized unless otherwise directed. Non-merchantable trees shall be severed and laid flat on the ground. Slash shall be scattered, not left in windrows, and kept a minimum of 10 feet back from the road edge, be chipped, utilized or otherwise removed from the sale. Stumps shall be set upright, not left on edge, and be moved at least 10 feet away from the road edge. Disturbed soil shall be feathered into the woods and not left in berms or windrows.

4.1.7 - Road Closure (10/11)

All new roads built into the sale must be blocked to vehicle traffic upon completion of the sale. Overgrown roads that are reopened shall be considered new roads. In general, this will require constructing a four (4') foot high berm of stumps and logs covered with earth. Contact the Sale Administrator for specific details of design and placement.

4.2 - Maintenance

4.2.4 - Grading (10/16)

For completion of the sale, state forest roads must be graded. In general, this will require a road grader or bulldozer to shape up the roads after forest products have been hauled off site. This includes cleaning of drainage areas, grading, crowning and filling with gravel, if necessary. The grading equipment to be used must be approved by the Unit Manager or his/her representative.

4.2.5 - Two Wheel Drive Condition (2/04)

All existing trail roads on and adjacent to the Sale Area must be passable by two-wheel drive traffic for the duration of the sale.

4.4 - Access

4.4.1 - Private property access (3/11)

Permission for access across private land is the responsibility of the Purchaser. A copy of the written permission from the private landowner must be given to the Unit Manager within 30 days of the bid opening and prior to the beginning of operations.

5 - Operations

5.2 - Conduct of Operations

5.2.1 - Slash

5.2.1.14 - Chipping of Slash (10/08)

If tops are chipped, they must be skidded to the landing separately from the bole section of the tree. Skidding of tops must be done in such a way as to minimize damage to the residual trees. See related specs 2.2.4 - Skidding Length and 3.4.1 - Damaged Timber.

5.2.2 - Hazard Trees/Snags

5.2.2.1 - Den Trees (10/16)

Obvious hollow and/or den trees shall be protected and left standing unless they are a safety hazard.

5.2.3 - Operating Restrictions

5.2.3.1 - Operating Restrictions (9/11)

Within Payment Unit(s) 1, 2, and 4, unless changed by written agreement, cutting, skidding, and hauling are limited to the period of December 1 to March 31. This restriction is because the sale is located within a deer wintering area.

5.2.3.2 - Operating Restrictions (9/11)

Within Payment Unit(s) 1, 2, 3 and 4, unless changed by written agreement, all cleanup activities must be completed by June 15 for all areas that were harvested during the previous harvest season. This restriction is because to allow the harvest area to revegetate before the dry season.

5.2.3.3 - Bark Slippage Restriction (3/09)

Within Payment Unit(s) 1, 2 and 4, unless changed by written agreement, cutting and skidding are not permitted during the period of April 15 to July 15. This restriction is because of bark slippage.

5.2.30 - Landing/Road Topsoil Protection (1/25)

Topsoil on new landings and new roads must be removed, stockpiled, and saved. Upon completion of the timber sale, soil must be evenly distributed back over the area for revegetation. In addition, the area must be seeded and mulched per Sale Administrator's instructions.

5.2.32 - Decking/Landing Restoration (9/13)

All decking and landing areas must have the surface area restored to a condition equal to or better than before. This is to ensure the proper regeneration of the stand. Wood debris, chips and "cookies" from trimmings must be removed or scattered away from landing and loading areas and may not be windrowed on the edge.

5.2.38 - No Decking Against Live Trees (2/04)

Cut products may not be decked against unmarked or designated leave trees.

5.4 - Soil Protection

5.4.1 - Rutting Restriction, General (7/16)

Operations are to cease immediately if equipment and weather conditions result in rutting of roads and/or skid trails which is 6 inches or greater in depth and 50 feet in length. The Unit Manager or his/her representative may restrict hauling and/or skidding if ruts exceed the specified depth. With the Unit Manager or his/her representative's approval, the Purchaser may return to the area when the risk of rutting has decreased. Note: Trees within 10 feet of ruts exceeding 6" will be considered damage due to damage caused to the tree roots and will be billed in accordance with 3.4 Damaged Timber.

5.8 - Protection of Endangered Species

5.8.5 - Protection of Raptor Nests (3/13)

All trees with raptor nests will be protected if found during harvesting operations. Notification will be made to the Unit Manager or his/her representative who will notify the Wildlife Biologist so an onsite evaluation and recommendation can be made, if necessary.

6 - Safety and Fire Prevention

6.2 - Signing

6.2.1 - Road Posting (10/20)

The Purchaser is responsible for posting and maintaining caution signs on Little Huron Road prior to beginning operations. The road must be posted at appropriate distances from the Sale Area to warn of logging activity and truck traffic. Signs must be removed when harvest operations are suspended or completed. The Purchaser will provide these signs.

**TIMBER SALE MAP**

This information provided by authority of Part 525, 1994 PA 451, as amended.

Sale Number

11-017-26

Date

11/17/2025

Forest Management Unit

Baraga Mgt Unit

County

Marquette

Mapped By: Ryan Mattila

Cruised By: Baraga Staff

Scale

1:15,840

Page

1

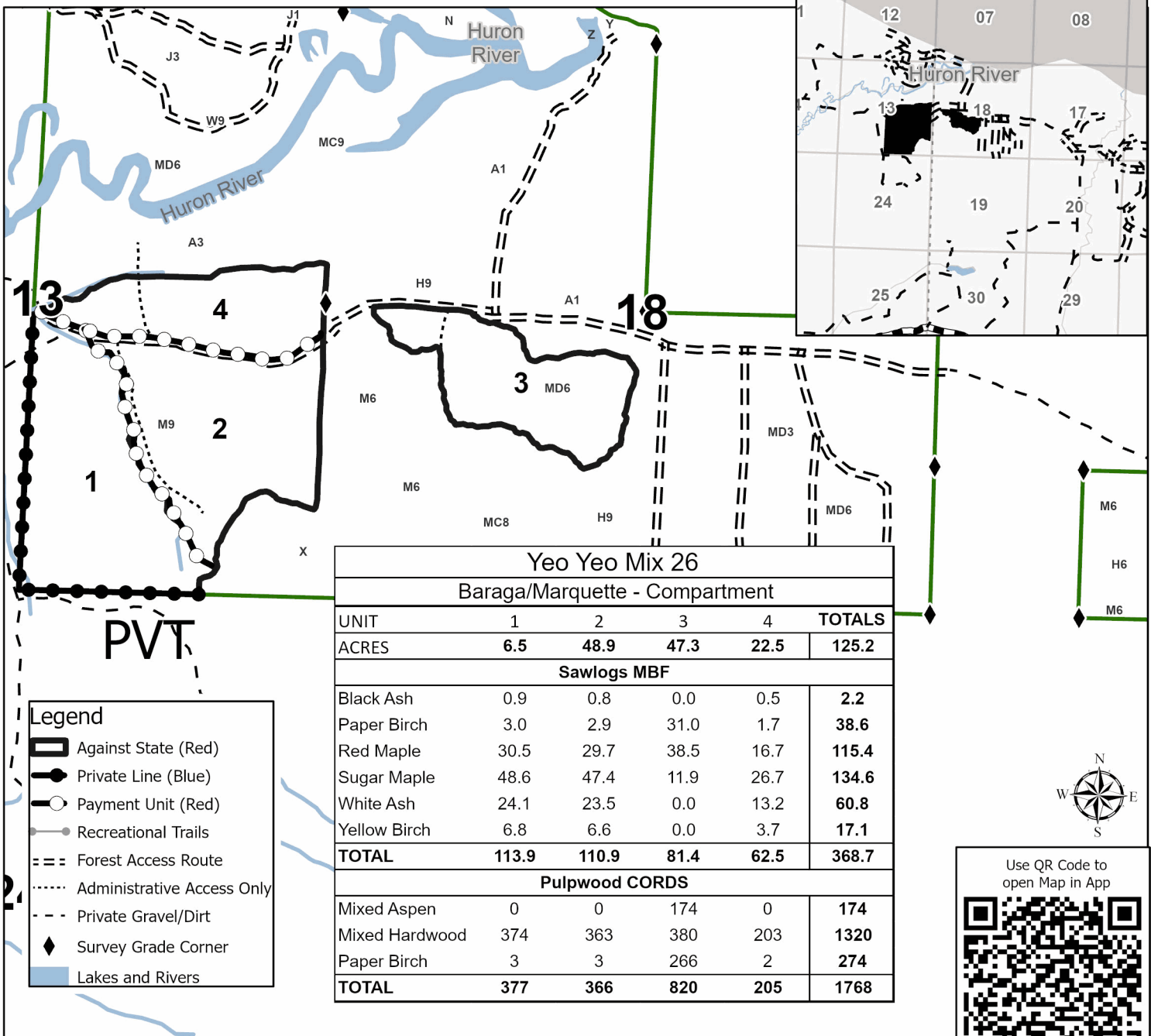
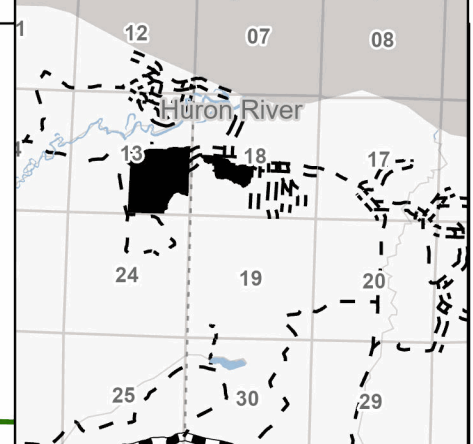
Of

1Township
52NRange
29W /Section(s) and
Subdivision(s) Sec. 13 S1/2NE,SE; Sec. 18 N1/2SW,SESW;**Cover Type**

A = Aspen	J = Jack Pine	O = Oak	U = Upland Brush
B = Paper Birch	K = Rock	P = Lowland Poplar	UM = Upland Mix Forest
C = Cedar	L = Lowland Brush	Q = Mixed Swamp Conifer	V = Bog or Marsh
D = Treed Bog	LM = Lowland Mix Forest	R = Red Pine	W = White Pine
E = Swamp Hardwoods	M = Maple, Beech, Birch	S = Black Spruce	X = Non Stocked
F = Spruce/Fir	MC = Mixed Conifer	T = Tamarack	Y = Sand
G = Grass	MD = Mixed Deciduous	Z = Water	
H = Hemlock	N = Marsh		

Density

0 = Non Stocked	5 = Pole Timber Medium
1 = Seedling Sapling Poor	6 = Pole Timber Well
2 = Seedling Sapling Medium	7 = Saw Timber Poor
3 = Seedling Sapling Well	8 = Saw Timber Medium
4 = Pole Timber Poor	9 = Saw Timber Well

Locator Map 1:100,000**Yeo Yeo Mix 26****Baraga/Marquette - Compartment**

UNIT	1	2	3	4	TOTALS
ACRES	6.5	48.9	47.3	22.5	125.2
Sawlogs MBF					
Black Ash	0.9	0.8	0.0	0.5	2.2
Paper Birch	3.0	2.9	31.0	1.7	38.6
Red Maple	30.5	29.7	38.5	16.7	115.4
Sugar Maple	48.6	47.4	11.9	26.7	134.6
White Ash	24.1	23.5	0.0	13.2	60.8
Yellow Birch	6.8	6.6	0.0	3.7	17.1
TOTAL	113.9	110.9	81.4	62.5	368.7
Pulpwood CORDS					
Mixed Aspen	0	0	174	0	174
Mixed Hardwood	374	363	380	203	1320
Paper Birch	3	3	266	2	274
TOTAL	377	366	820	205	1768

Legend

- Against State (Red)
- Private Line (Blue)
- Payment Unit (Red)
- Recreational Trails
- Forest Access Route
- Administrative Access Only
- Private Gravel/Dirt
- Survey Grade Corner
- Lakes and Rivers

Use QR Code to
open Map in App

0 0.25 0.5 1 Miles

BID INSTRUCTIONS (VER. 10/10/2022):

1. Scheduled Bid Location, Date, and Time (2/11)

Bids must be received by the Unit Manager, BARAGA OFFICE, 427 US 41 North, Baraga, MI 49908, no later than 9:00 a.m. (local time) on January 8, 2026. For further information concerning this sale, contact Brad Carlson at 906-353-6651.

2. Bidder's Qualifications (10/22)

If all or part of a timber sale was prepared by a private contractor, the contractor and that contractor's company are not permitted to bid on the timber sale. A person must be 18 years of age or older to purchase timber. Permanent employees of the Department of Natural Resources or members of their immediate household may not bid. Former employees, in the permanent or seasonal class, may not bid until 3 months after the last day of active duty. Bids will not be accepted from individuals or companies appearing on the DNR/FRD No-Bid List. This list contains the names of purchasers who previously failed to execute a contract within 21-days or who have a history of poor performance.

3. Preparation of Sealed Bids (5/16)

Bid Forms may be completed online thru Michigan DNR Timber Sale Online Bidding (OLB) at www.michigan.gov/timberbidding or by completing the hardcopy Bid Form found in the Timber Sale Prospectus. Hardcopy Bid Forms shall be manually signed in ink. Registration in OLB is considered your 'signature' for all bids submitted thru that system. Bid prices must be entered for each species and product in the Bid Price column for all material subject to bidding and all fill-in blanks must be completed. If erasures or other changes appear on the hardcopy Bid Form, each erasure or change must be initialed by the person signing the bid.

4. Submission of Sealed Bids (5/16)

Bid forms may be obtained from the Unit Manager or thru OLB. Bids may be submitted hardcopy or thru OLB. All hardcopy bids must be submitted on the bid form and in an envelope clearly identified as described in this section. NOTE: Only one bid form per bid envelope. Sealed bids must be submitted to the Unit office designated in the prospectus and must be submitted at or prior to the time established in the prospectus. The envelope should show on the outside (a) the sale name or number and (b) the date and time of bid opening, as shown in the prospectus. Bids received after the time specified in the sale prospectus are late bids and will be rejected.

It is possible for a bidder to submit multiple bids on a single sale. For example, a bid may be submitted hardcopy and a bid may be submitted thru OLB. Or, two bidders from the same company could both submit bids on the same sale. If this were to happen, the State would accept all bids received and award the contract accordingly. All bidding and contractual requirements would apply to all bids received.

5. Public Opening of Sealed Bids (7/16)

If conditions permit, the sealed bids will be publicly opened and posted at the time and place set in the prospectus.

If a bidder, present at a bid opening, has submitted bids on more than one sale, that bidder may withdraw their unopened bid envelopes or announce the withdrawal of their online bid after being declared the successful bidder on one sale.

6. Award of Contract (1/11)

Award of the contract will be made to the Bidder whose bid, conforming to the prospectus, is most advantageous to the State of Michigan on the basis of total value at rates bid for the estimated quantities. The State reserves the right to reject any bid or waive any minor irregularity in bids received. A written award mailed (or otherwise furnished) to the successful Bidder shall be deemed to result in a binding contract without further action by either party.

7. Down Payment (1/11)

The Bidder to whom award is made must make a down payment within 21 days of the sale award. The amount of the down payment will be calculated as shown in the Bond and Payment Schedule of this prospectus. Only cash may be used to meet this requirement.

8. Performance Security (1/11)

As guarantee of faithful performance, a cash bond, certificate of deposit, surety bond or irrevocable letter of credit (LOC) is required within 21 days of the sale award. The amount of the performance security is shown in the Bond and

Payment Schedule of this prospectus. If an LOC or surety is used, the coverage must extend for at least 6 months beyond the contract expiration.

9. Worker's Compensation (10/22)

Purchaser shall obtain worker's compensation insurance to cover claims under Michigan's Worker's Disability Compensation Act of 1969 or similar employee benefit act of any other state applicable to an employee. Verification of Worker's Disability Compensation Act Compliance must be completed and submitted within 21 days of contract award and prior to the issuance of the timber sale contract. In addition, if applicable, Notice of Exclusion or Certificate of Insurance must also be submitted.

10. Timber Sale Contract (10/22)

Additional conditions and requirements common to all timber sales are listed on the timber sale contract (R4031) and are available on line at www.michigan.gov/timber. Contact the Unit Manager for additional information or a sample contract. Within 21 days of the date of the award letter, the bidder must sign the contract and provide the required down payment, performance security, and verification of worker's disability compensation. The down payment and performance security shall be in accordance with the provisions of the timber sale contract, in the sums stated in this prospectus. If these actions are not taken, then the Bidder, the Bidder's corporation, and the corporation's principals may not be permitted to bid on State timber sales for a period of 3 months after the first offense, 6 months after the second offense, and 1 year after the third offense. An offense will only be counted against the Bidder for 5 years. In addition, the Bidder certifies that if awarded this contract, the Bidder will complete the timber sale contract in accordance with its terms and any modifications thereof including requirements to purchase, cut, and remove the included timber by the expiration date.

Payment Unit values in the State Forest Timber Sale Contract are calculated based on the advertised value of the Payment Unit as a percentage of the total advertised value of the contract. The advertised value of each Payment Unit is given in the Description of Timber by Payment Unit table on the Timber Sale Information page. For example, if the value of Payment Unit 1 is advertised as \$1,500 and the total Timber Sale value is advertised as \$10,000, the contract price for Payment Unit 1 will be 15% of the total bid price ($\$1,500/\$10,000 * 100$).

11. Disclaimer of Estimates and Bidder's Warranty of Inspection (10/22)

Before submitting this bid, the Bidder is advised and cautioned to inspect the sale area, review the requirements of the sale contract, and take other steps as may be reasonably necessary to ascertain the location, estimated volumes, construction estimates, and operating costs of the proposed sale. Failure to do so will not relieve the Bidder from responsibility for completing the contract.

The Bidder warrants that this bid is submitted solely on the basis of the Bidder's examination and inspection of the quality and quantity of the timber offered for sale and the Bidder's opinion of the value thereof and the costs of recovery. No reliance should be placed on the State of Michigan's estimates of timber quality, quantity or costs of recovery. Bidder further acknowledges that the State of Michigan: (i) expressly disclaims any warranty of fitness of timber for any purpose; (ii) offers this timber as is without any warranty of quality (merchantability) or quantity and (iii) expressly disclaims any warranty as to the quantity or quality of timber sold.

12. Certification and Chain-of-Custody (10/22)

Unless otherwise indicated in the contract under section 7 – Other Conditions of the Sale Specific Conditions & Requirements, the area encompassed by this timber sale is certified to the standards of the Forest Stewardship Council (FSC) - Certificate #SCS-FM/COC-00090N and the Sustainable Forestry Initiative (SFI) - Certificate #NSF-SFIS-5Y031-SF5. Forest products from this sale may be delivered to the mill as "FSC 100% and / or SFI certified" as long as the contractor hauling the forest products is chain-of-custody (COC) certified or covered under a COC certificate from the destination mill. The purchaser is responsible for maintaining COC after leaving the sale area.

13. Good Neighbor Authority (GNA) Requirements (10/22)

If the name of this timber sales contains the acronym GNA, it is authorized by the Good Neighbor Authority (GNA) and covered by various agreements between the U.S. Forest Service and the State. The timber sale occurs on federal land and the following conditions apply:

GNA contracts on US Forest Service land will not be awarded to purchasers on the Federal list of excluded parties. The System for Award Management (SAM) will be checked for active excluded parties prior to award of contract. In

addition, the Bidder to whom award is made must complete an Assurance Regarding Felony Conviction or Tax Delinquent Status for Corporate Applicants (AD-3031).

14. Good Neighbor Authority (GNA) Requirements, con't (10/22)

Bidder certifies, by signing this bid form, that to the best of Bidder's knowledge that the following representations are accurate and complete.

- a. That the Bidder and its principals are not presently debarred, suspended, proposed for debarment, declared ineligible, or voluntary excluded from timber sales (covered transactions) by any Federal department or agency.
- b. That the Bidder and its principals have not within a 3-year period preceding this bid been convicted of or had a civil judgment rendered against them for commission of fraud or a criminal offense in connection with obtaining , attempting to obtain, or performing a public (Federal, State, or local) transaction or contract under a public transaction; violation of Federal or State antitrust statutes or commission of embezzlement, theft, forgery, bribery, falsification or destruction of records, making false statements, or receiving stolen property.
- c. That the Bidder and its principals are not presently indicted for or otherwise criminally or civilly charged by a governmental entity (Federal, State, or local) with commission of any of the offenses enumerated in paragraph b of this certification.
- d. That the Bidder and its principals have not within a 3-year period preceding this bid had one or more public transactions (Federal, State, or local) terminated for breach or default of a timber or forest product contract.

Bidders that cannot certify this requirement, in whole or in part, shall submit an explanation with their bid.

Scott Bowen
Director

TIMBER SALE INFORMATION

Puppy Paw Hardwood (12-052-26)

T43N, R31W, SEC. 13; T43N, R31W, SEC. 14; T43N, R31W, SEC. 24.

Iron County (Advertised Price \$38,674.70)

SALE NOTE: Access to Payment Unit 3 may require temporary culverts/crossing and a permit.

A recreation site such as a trail, pathway, or campground is within the sale area or the vicinity. Certain restrictions/specifications may be applicable including time restrictions.

A timber sale contract for this lump sum, sealed bid timber sale will be awarded to the responsible bidder offering the highest sealed bid price. All units of volume listed below were estimated using the Inventory Manager computer program and the new Michigan taper model. Bids must be at or above the following advertised price for each product and species:

<u>PRODUCTS & SPECIES</u>	<u>ESTIMATED UNITS*</u>	<u>ADVERTISED PRICE</u>
Sawtimber		
Basswood	100.6 MBF	\$ 58.00 / MBF
Paper Birch	8.7 MBF	\$ 83.00 / MBF
Red Maple	6.8 MBF	\$ 177.00 / MBF
Sugar Maple	51.3 MBF	\$ 311.00 / MBF
Yellow Birch	1.0 MBF	\$ 128.00 / MBF
Pulpwood		
B. T. Aspen	9 Cords	\$ 18.70 / Cord
Balsam Fir	60 Cords	\$ 5.25 / Cord
Balsam Poplar	32 Cords	\$ 18.70 / Cord
Basswood	211 Cords	\$ 5.55 / Cord
Black Ash	5 Cords	\$ 12.95 / Cord
Ironwood	3 Cords	\$ 12.95 / Cord
Paper Birch	39 Cords	\$ 5.20 / Cord
Quaking Aspen	175 Cords	\$ 18.70 / Cord
Red Maple	161 Cords	\$ 12.95 / Cord
Sugar Maple	532 Cords	\$ 12.95 / Cord
Yellow Birch	2 Cords	\$ 12.95 / Cord

* The total volume is statistically estimated within plus (+) or minus (-) 13.88 percent. There are an estimated 1,623 cords on this timber sale, plus or minus 225 cords at the 95% confidence level. The estimated units are final and not subject to adjustment. Prospective bidders are urged to examine this timber and to make their own estimates of quantity and quality.

BOND AND PAYMENT SCHEDULE:

1. A bond in the amount of \$1,934.00 to insure faithful performance of the conditions of the contract will be deposited by the successful bidder within 21 days of the sale award.
2. Cutting in any sale or unit without the required advance payment would be considered a trespass.
3. Total payment must be paid in advance or according to the following schedule :
 - (a) Ten percent (10%) of the sale value must be paid within 21 days of the sale award.
 - (b) The 10% down payment will be credited towards the first unit cut.
 - (c) Payment for each of the following units must be made before cutting begins in that unit:

PAYMENT UNIT NUMBER	PERCENT OF TOTAL SALE VALUE
01	13.2%
02	8.8%
03	20.3%
04	14.3%
05	11.3%
06	15.9%
07	16.2%
4. If no cutting takes place, the 10% down payment will not be refunded.
5. Operations on the contract issued will terminate on 06/30/2029.

SALE STATISTICS

Volumes were calculated in cubic feet using the Michigan taper model. Cubic foot volume includes all wood inside bark for the product indicated. For display purposes, cubic feet were converted to cords and MBF using a simple conversion factor, e.g. 79 cubic feet per cord and 185 cubic feet per MBF. The cubic foot volumes are precise; the cords and MBF volumes are not. Cubic foot volume cannot be directly converted to cords or boards with precision.

SALE VOLUMES

The total estimated sale volume may not equal the sum of the species/products due to the nature of statistical calculations associated with double sampling methodology.

VOLUME			STATISTICAL RANGE IN CORDS	
TOTAL CUBIC FEET	TOTAL CORDS	PERCENT ERROR	MINIMUM	MAXIMUM
128,243	1,623	13.88%	1,398	1,849

VDU VOLUMES

A VDU is a Volume Determination Unit. Volumes and their associated statistics are calculated at the VDU level and summarized to the sale level. There is often a one to one relationship between a VDU and a Payment Unit, but not always, depending on the cruise design. Refer to the VDU TO PAYMENT UNIT table.

	VOLUME			RANGE IN CORDS	
VDU	TOTAL CUBIC FEET	TOTAL CORDS	PERCENT ERROR	MINIMUM	MAXIMUM
1	25,049	317	44.77%	175	459
2	13,126	166	36.08%	106	226
3	23,095	292	26.64%	214	370
4	66,973	848	18.11%	694	1,001
TOTAL:	128,243	1,623		1,190	2,057

VDU TO PAYMENT UNIT

When a VDU is associated with more than one Payment Unit (PU), the VDU volumes are assigned to the PU based on acres of the VDU within the PU.

VDU	VDU ACRES	PU	PU ACRES
1	10.7	1	10.7
2	9.8	2	9.8
3	25.2	3	25.2
4	86.4	4	21.0
		5	17.1
		6	23.6
		7	24.7
TOTAL:	132.1		132.1

DESCRIPTION OF TIMBER BY PAYMENT UNIT (PU)

PU	MARKET GROUP	PRODUCT	QUANTITY	UNIT	ACRES	ADVERTISE PRICE
1	Sugar Maple	Sawtimber	1.7	MBF	10.4	\$5,102.80
	Balsam Fir	Pulpwood	54	Cords		
	Balsam Poplar		32	Cords		
	Paper Birch		14	Cords		
	Quaking Aspen		152	Cords		
	Red Maple		43	Cords		
	Sugar Maple		17	Cords		
2	Basswood	Sawtimber	5.7	MBF	9.7	\$3,398.05
	Paper Birch		6.4	MBF		
	Sugar Maple		3.5	MBF		
	B. T. Aspen	Pulpwood	5	Cords		
	Balsam Fir		6	Cords		
	Basswood		11	Cords		
	Paper Birch		21	Cords		
	Quaking Aspen		9	Cords		
	Red Maple		8	Cords		
	Sugar Maple		68	Cords		
3	Basswood	Sawtimber	26.6	MBF	25.3	\$7,834.35
	Sugar Maple		13.0	MBF		
	B. T. Aspen	Pulpwood	4	Cords		
	Basswood		51	Cords		
	Red Maple		7	Cords		
	Sugar Maple		139	Cords		
4	Basswood	Sawtimber	16.9	MBF	21.4	\$5,520.15
	Paper Birch		0.6	MBF		
	Red Maple		1.7	MBF		
	Sugar Maple		8.2	MBF		
	Yellow Birch		0.2	MBF		
	Basswood	Pulpwood	37	Cords		
	Black Ash		1	Cords		
	Ironwood		1	Cords		
	Paper Birch		1	Cords		
	Quaking Aspen		3	Cords		
	Red Maple		26	Cords		
	Sugar Maple		76	Cords		
5	Basswood	Sawtimber	13.4	MBF	16.9	\$4,380.05
	Paper Birch		0.5	MBF		
	Red Maple		1.3	MBF		
	Sugar Maple		6.5	MBF		
	Yellow Birch		0.2	MBF		
	Basswood	Pulpwood	29	Cords		
	Black Ash		1	Cords		
	Ironwood		1	Cords		
	Paper Birch		1	Cords		
	Quaking Aspen		3	Cords		
	Red Maple		20	Cords		
	Sugar Maple		60	Cords		
6	Basswood	Sawtimber	18.8	MBF	23.8	\$6,154.75
	Paper Birch		0.6	MBF		
	Red Maple		1.9	MBF		
	Sugar Maple		9.1	MBF		
	Yellow Birch		0.3	MBF		
	Basswood	Pulpwood	41	Cords		
	Black Ash		1	Cords		
	Ironwood		1	Cords		
	Paper Birch		1	Cords		

DESCRIPTION OF TIMBER BY PAYMENT UNIT (PU), CON'T

PU	MARKET GROUP	PRODUCT	QUANTITY	UNIT	ACRES	ADVERTISE PRICE				
6 con't	Quaking Aspen	Pulpwood	4	Cords						
	Red Maple		28	Cords						
	Sugar Maple		85	Cords						
	Yellow Birch		1	Cords						
7	Basswood	Sawtimber	19.2	MBF	24.3	\$6,284.55				
	Paper Birch		0.6	MBF						
	Red Maple		1.9	MBF						
	Sugar Maple		9.3	MBF						
	Yellow Birch		0.3	MBF						
	Basswood	Pulpwood	42	Cords						
	Black Ash		2	Cords						
	Paper Birch		1	Cords						
	Quaking Aspen		4	Cords						
	Red Maple		29	Cords						
	Sugar Maple		87	Cords						
	Yellow Birch		1	Cords						
	TOTAL:			168.4			MBF			
	TOTAL:			1,229			Cords			

Sale Specific Conditions & Requirements

Sale Name: Puppy Paw Hardwood

Sale Number: 12-052-26 Seq#: 1

1 - Sale Area

1.2 - Boundaries

1.2.1 - Painted Boundaries (9/19)

The sale boundary and Payment Unit boundaries are marked and identified by blue, red, and yellow paint. Exterior sale boundary lines against private property are marked with blue paint. Exterior sale boundary lines against state are marked with red paint. Interior Payment Unit boundaries are marked with red and/or yellow paint. Retention patches are marked with red paint; no harvesting activities may occur within these areas. The painted boundary line trees, red and yellow, are not Included Timber and are to be protected unless marked with orange paint.

2 - Timber Specifications

2.1 - Included Timber

2.1.2 - Clearcut Unit(s) w/o Unmerchantable Trees (8/11)

Within Payment Unit(s) 1, cut all trees which meet minimum piece specifications in 2.2 Utilization. Leave all conifer, oak, and yellow birch.

2.1.3 - Cut Tree Marked Unit(s) (12/08)

Within Payment Unit(s) 2-7, all trees are designated for cutting when marked with orange paint above and below stump height, regardless of merchantability. In addition, within Payment Unit 2, remove all merchantable balsam fir.

2.1.7 - Leave Tree Marked Unit(s) (6/14)

Within Payment Unit(s) 1, all trees, which meet minimum piece specifications in 2.2 Utilization, are designated for cutting except cedar, pine, white spruce, oak, yellow birch, and trees marked with green paint above and below stump height.

2.2 - Utilization

2.2.6 - Roundwood Operation Required (3/21)

The skidding of whole trees or tree segments with limbs attached is prohibited within Payment Units 2-7. All products must be produced as roundwood and forwarded to existing roads or landing areas in final product length.

3 - Payments

3.4 - Damaged Timber

3.4.1 - Damaged Timber (12/24)

General Condition and Requirement 3.4 Damaged Timber, defines liquidated damages for undesignated live merchantable trees which are cut or injured. In addition, extreme care should be taken to avoid damage to tree seedlings and saplings. No damage is acceptable to undesignated live merchantable trees. Within the Sale Area, if more than 5% of trees (> 4.5" DBH) within a specified area of the sale are damaged, liquidated damages will be assessed for all trees damaged. Rates will be in accordance with General Condition and Requirement 3.4 Damaged Timber.

4 - Transportation

4.1 - Construction

4.1.4 - Timber Removed for Construction (3/23)

Trees cut or damaged in the process of pre-approved road, landing, or skid trail construction will be decked in an area separate from other Designated Timber and not removed until measured by the Sale Administrator. Payment will be made at contract prices or average prices, if not on the contract.

4.1.5 - Culverts (5/14)

Roads may require the installation of culverts for cross drainage or at natural drainage-ways accessing the Payment Unit 3 area. If culverts are needed in these locations, their placement will be specified by the Sale Administrator, and they shall be installed prior to hauling. The culverts shall be corrugated metal or plastic. Culverts will be a minimum of 12 inches in diameter and 24 feet in length. If culverts are removed, fill shall be removed from wetland soils as specified. Soils shall be

maintained and left in a non-erodible condition, with water bars, seed, fertilizer, mulch, and slash installed as directed by the Sale Administrator and as specified in the BMP manual. Stream crossing permits, if needed, will be obtained by the DNR.

4.1.6 - Road Construction (4/24)

Construction of new roads or improvements of existing roads shall be done in such a way as to minimize the environmental and visual impacts. Merchantable trees shall be cut and utilized unless otherwise directed. Non-merchantable trees shall be severed and laid flat on the ground. Slash shall be scattered, not left in windrows, and kept a minimum of 10 feet back from the road edge. Stumps shall be set upright, not left on edge, and be moved at least 10 feet away from the road edge. Disturbed soil shall be feathered into the woods and not left in berms or windrows.

4.1.7 - Road Closure (10/11)

All new roads built into the sale must be blocked to vehicle traffic upon completion of the sale. Overgrown roads that are reopened shall be considered new roads. In general, this will require constructing a four (4') foot high berm of stumps and logs covered with earth. Contact the Sale Administrator for specific details of design and placement.

4.2 - Maintenance

4.2.4 - Grading (10/16)

For completion of the sale, state forest roads must be graded. In general, this will require a road grader or bulldozer to shape up the roads after forest products have been hauled off site. This includes cleaning of drainage areas, grading, crowning and filling with gravel, if necessary. The grading equipment to be used must be approved by the Unit Manager or his/her representative.

4.2.5 - Two Wheel Drive Condition (2/04)

All existing trail roads on and adjacent to the Sale Area must be passable by two-wheel drive traffic for the duration of the sale.

5 - Operations

5.2 - Conduct of Operations

5.2.1 - Slash

5.2.1.11 - Slash for Reforestation (3/21)

To facilitate reforestation, the sale area shall be left with slash evenly distributed. Stumps shall be cut low to the ground. Processing sites shall not be left with a compacted layer of slash; tops from these sites shall be hauled back into the cut area and scattered.

5.2.2 - Hazard Trees/Snags

5.2.2.1 - Den Trees (10/16)

Obvious hollow and/or den trees shall be protected and left standing unless they are a safety hazard.

5.2.3 - Operating Restrictions

5.2.3.1 - Operating Restrictions (9/11)

Within Payment Unit(s) 1 - 7, unless changed by written agreement, cutting, skidding, and hauling are limited to the period of December 1 through March 31. This restriction is due to the deer wintering range.

5.2.3.3 - Bark Slippage Restriction (3/09)

Within Payment Unit(s) 2-7, unless changed by written agreement, cutting and skidding are not permitted during the period of April 15 to July 15. This restriction is because of bark slippage.

5.2.17 - Timber Mats and Interlocking Composite Mats (5/23)

Some roads or skid trails accessing Payment Unit 3 may require extra protection such as that afforded by timber mats, interlocking composite mats, or another approved system. If available, mats may be borrowed from the DNR. A Timber Sale Contract Amendment will be used to document the Purchaser's use of the DNR's mats. Contact the Sale Administrator regarding availability and pick-up. Timber mats are available from various field offices. Composite mats are only available from the Marquette ICC. The Purchaser is responsible for picking up and hauling the mats to and from the site. The composite mats will require DNR staff onsite for installation and removal. Contact the Sale Administrator to schedule at least 30 days before desired install/removal date. All mats must be cleaned prior to drop off. This may include, but is not limited to,

power washing and brushing to remove mud and debris. A charge of \$700.00 per timber mat and \$2,000.00 per composite mat will be assessed for all damaged or non-returned mats. Damage for the crane/timber mats is defined as three or more broken cants. Damage for the composite mats is defined as cracked or broken mats.

5.2.32 - Decking/Landing Restoration (9/13)

All decking and landing areas must have the surface area restored to a condition equal to or better than before. This is to ensure the proper regeneration of the stand. Wood debris, chips and "cookies" from trimmings must be removed or scattered away from landing and loading areas and may not be windrowed on the edge.

5.2.38 - No Decking Against Live Trees (2/04)

Cut products may not be decked against unmarked or designated leave trees.

5.4 - Soil Protection

5.4.1 - Rutting Restriction, General (7/16)

Operations are to cease immediately if equipment and weather conditions result in rutting of roads and/or skid trails which are 6 inches or greater in depth and 50 feet in length. Note: Trees within 10 feet of ruts exceeding 6 inches deep will be considered damaged due to damage caused to the tree roots and will be billed in accordance with 3.4 Damaged Timber. The Unit Manager or his/her representative may restrict hauling and/or skidding if ruts exceed the specified depth. With the Unit Manager or his/her representative's approval, the Purchaser may return to the area when the risk of rutting has decreased.

6 - Safety and Fire Prevention

6.2 - Signing

6.2.1 - Road Posting (10/20)

The Purchaser is responsible for posting and maintaining caution signs on Way Dam Road and/or County Line / Wright Road, and any forest access routes used while operations are active, prior to beginning operations. The road must be posted at appropriate distances from the Sale Area to warn of logging activity and truck traffic. Signs must be removed when harvest operations are suspended or completed. The Purchaser will provide these signs.



TIMBER SALE MAP

This information provided by authority of Part 525, 1994 PA 451, as amended.

Sale Number

12-052-26

Date

11/07/2025

Forest Management Unit

Crystal Falls Mgt Unit

County

Iron

Mapped By: Brolin

Cruised By: Brolin

Scale

1:20,000

Page

1

Of

1

Township
43N

Range
31W

Section(s) and

Subdivision(s) Sec. 13 SWNW,NWSW; Sec. 14 SENE,SE; Sec. 24 N1/2SE;

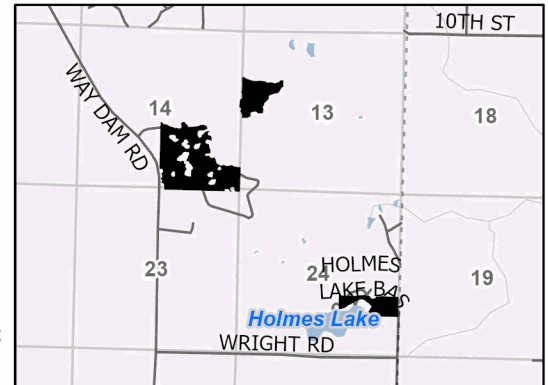
Cover Type

A = Aspen	J = Jack Pine	O = Oak	U = Upland Brush
B = Paper Birch	K = Rock	P = Lowland Poplar	UM = Upland Mix Forest
C = Cedar	L = Lowland Brush	Q = Mixed Swamp Conifer	V = Bog or Marsh
D = Treed Bog	LM = Lowland Mix Forest	R = Red Pine	W = White Pine
E = Swamp Hardwoods	M = Maple, Beech, Birch	S = Black Spruce	X = Non Stocked
F = Spruce/Fir	MC = Mixed Conifer	T = Tamarack	Y = Sand
G = Grass	MD = Mixed Deciduous	Z = Water	
H = Hemlock	N = Marsh		

Density

0 = Non Stocked	5 = Pole Timber Medium
1 = Seedling Sapling Poor	6 = Pole Timber Well
2 = Seedling Sapling Medium	7 = Saw Timber Poor
3 = Seedling Sapling Well	8 = Saw Timber Medium
4 = Pole Timber Poor	9 = Saw Timber Well

Locator Map 1:75,000



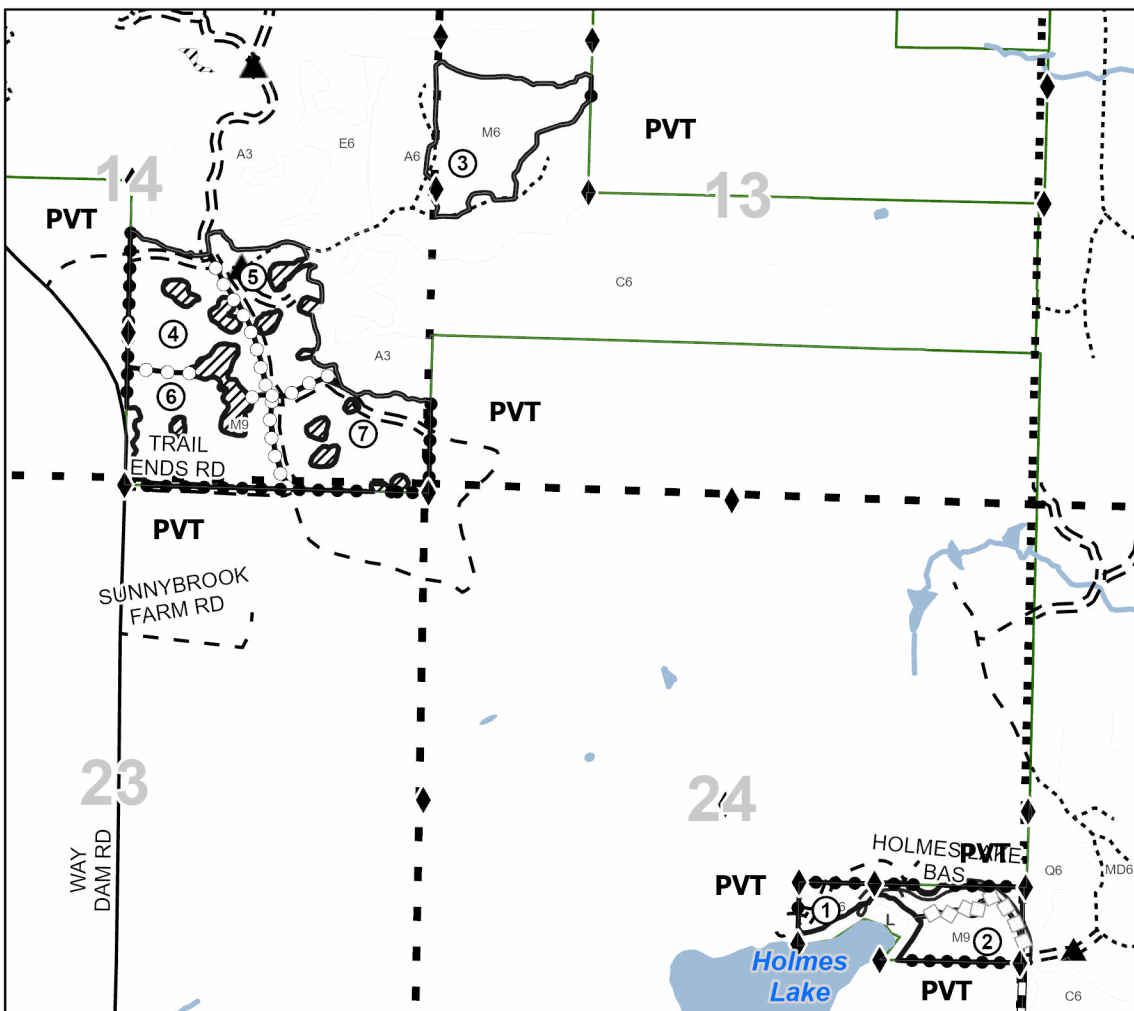
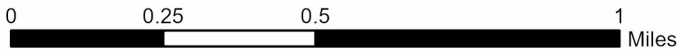
Puppy Paw Hardwood

131.8 Acres

Compartment 145



Puppy Paw Hardwood							
Iron - Compartment 145							
UNIT	1	2	3	4	5	6	7
ACRES	10.4	9.7	25.3	21.5	16.9	23.9	24.1
TOTALS							
Sawlogs MBF							
Basswood	0.0	5.7	26.5	17.0	13.4	18.9	19.1
Red Maple	0.0	0.0	0.0	1.7	1.3	1.9	1.9
Paper Birch	0.0	6.4	0.0	0.6	0.5	0.6	0.6
Sugar Map	1.7	3.5	13.1	8.2	6.5	9.1	9.2
Yellow Birch	0.0	0.0	0.0	0.2	0.2	0.3	0.3
TOTAL	1.7	15.6	39.6	27.7	21.9	30.8	31.1
Pulpwood CORDS							
Mixed Asp	152	14	4	3	3	4	4
Balsam Fir	54	6	0	0	0	0	0
Mixed Hwc	106	108	197	143	112	158	161
TOTAL	312	128	201	146	115	162	165



Legend

- Payment Unit
- Private Line (Blue)
- Payment Unit (Yellow)
- Payment Unit (Red)
- Primary Forest Road
- Forest Access Route
- Administrative Access Only
- Paved Road
- Government Gravel/Dirt
- Private Gravel/Dirt
- Survey Grade Corner
- Berm

Use QR Code to
open Map in App



Puppy Paw Hardwood (12-052-26)

T43N, R31W, SEC. 13; T43N, R31W, SEC. 14; T43N, R31W, SEC. 24; Iron

In response to the notice of sale to be held 9:00 a.m. (local time) on January 8, 2026, I am hereby submitting my sealed bid (firm offer) for the following forest products to be cut. Bids for individual species must be at or above the advertised price. All non-responsive bid forms may be rejected.

<u>PRODUCTS & SPECIES</u>	<u>ESTIMATED VOLUME*</u>	<u>ADVERTISED PRICE</u>	<u>BID PRICE/UNIT</u>
Sawtimber			
Basswood	100.6 MBF	\$ 58.00/MBF	\$ _____
Paper Birch	8.7 MBF	\$ 83.00/MBF	\$ _____
Red Maple	6.8 MBF	\$ 177.00/MBF	\$ _____
Sugar Maple	51.3 MBF	\$ 311.00/MBF	\$ _____
Yellow Birch	1.0 MBF	\$ 128.00/MBF	\$ _____
Pulpwood			
B. T. Aspen	9 Cords	\$ 18.70/Cord	\$ _____
Balsam Fir	60 Cords	\$ 5.25/Cord	\$ _____
Balsam Poplar	32 Cords	\$ 18.70/Cord	\$ _____
Basswood	211 Cords	\$ 5.55/Cord	\$ _____
Black Ash	5 Cords	\$ 12.95/Cord	\$ _____
Ironwood	3 Cords	\$ 12.95/Cord	\$ _____
Paper Birch	39 Cords	\$ 5.20/Cord	\$ _____
Quaking Aspen	175 Cords	\$ 18.70/Cord	\$ _____
Red Maple	161 Cords	\$ 12.95/Cord	\$ _____
Sugar Maple	532 Cords	\$ 12.95/Cord	\$ _____
Yellow Birch	2 Cords	\$ 12.95/Cord	\$ _____

*The volumes are statistically estimated within plus (+) or minus (-) 13.88 percent at 95% confidence level. These estimated volumes are final and not subject to adjustment. Prospective bidders are urged to examine this timber and to make their own estimates of quantity and quality.

I understand that any or all bids may be rejected. All bids must be signed and all bid items must be bid or the bid form may be rejected. I also understand that consideration and awarding a contract will be based upon my past performance and ability to complete the contract based upon equipment and staffing subject to my control .

FEDERAL ID: ____ - ____ - ____ or SOCIAL SECURITY NUMBER: ____ - ____ - ____

Company or individual bidding: _____

Company representative's name: _____

Address: _____

City: _____ State: _____ Zip: _____

IF AVAILABLE, PLEASE PLACE THE PERSONALIZED LABEL FROM YOUR PROSPECTUS IN THE ABOVE BOX.

Individual or company representative's signature: _____ Date: _____

Phone number : _____ Email (optional): _____

**THE WINNING BIDDER MUST COMPLETE THE VERIFICATION OF WORKER'S DISABILITY COMPENSATION ACT
COMPLIANCE (ON REVERSE SIDE IF DOUBLE SIDED) WITHIN 21 DAYS OF SALE AWARD DATE**



TIMBER SALE VERIFICATION OF WORKER'S DISABILITY COMPENSATION ACT COMPLIANCE

As required by Act 317, P.A. 1969 (Worker's Compensation) and
Part 5 of Act 451 of 1994, as amended.

FOR DEPARTMENT USE ONLY

Sale Number (XX - XXX - XX - XX)

Forest Management Unit:

VERIFICATION OF WORKER'S DISABILITY COMPENSATION ACT COMPLIANCE

- This verification must be completed and submitted within 21 days of contract award and prior to the issuance of the timber sale contract.
- In addition, if boxes 2B or 2C are checked, then Notice of Exclusion or Certificate of Insurance must be submitted within twenty-one (21) days of the contract award and prior to the issuance of the timber sale contract.
- All information must be typed or printed except for written signatures.

Please Check Appropriate Categories:

1. My business is organized as (you **must** check one of the boxes below):
 - A. ☐ Sole Proprietorship (individual)
 - B. ☐ Partnership
 - C. ☐ Corporation
2. You **must** check one of the boxes below:
 - A. ☐ I certify my business is a sole proprietorship and it has no employees but the sole proprietor. I am not subject to the Worker's Compensation Laws.
 - B. ☐ I certify my business has satisfied its obligation to the Worker's Compensation Act through the use of an approved Notice of Exclusion (BWC-337, Rev. 5/96). I will provide a copy of the Notice of Exclusion within 21 days of the contract award. (For questions or a copy of the BWC-337, please call the Worker's Compensation Bureau at 517-322-1195).
 - C. ☐ I certify my business has a Worker's Compensation Policy. I will provide an original Certificate of Insurance within twenty-one (21) days of the contract award.
3. If you have checked item 2(A) or 2(B), you **must** indicate the number of **both** full-time and part-time employees, other than yourself, including family members and active partners (if none, you must enter "0").

_____ Full-time Employees

_____ Part-time Employees

Name of Business		Federal ID (or) Social Security No.
Address		Telephone ()
City	State	ZIP

I hereby certify that the above information is true and correct. I agree to notify the Michigan DNR of any changes that occur in factors affecting my coverage during any of my present and future operations.

Signature of Owner or Authorized Representative

Title

Date

Please complete the "SEALED BID" information on the next page

Saltu Acta (11-011-26)
T51N, R37W, SEC. 10; Ontonagon COUNTY

In response to the notice of sale to be held 9:00 a.m. (local time) on January 8, 2026, I am hereby submitting my sealed bid (firm offer) for the following forest products to be cut. Bids for individual species must be at or above the advertised price. All non-responsive bid forms may be rejected.

<u>PRODUCTS & SPECIES</u>	<u>ESTIMATED VOLUME*</u>	<u>ADVERTISED PRICE</u>	<u>BID PRICE/UNIT</u>
Sawtimber			
Basswood	50.9 MBF	\$ 58.00/MBF	\$ _____
Red Maple	19.8 MBF	\$ 177.00/MBF	\$ _____
Sugar Maple	181.5 MBF	\$ 311.00/MBF	\$ _____
Yellow Birch	0.9 MBF	\$ 128.00/MBF	\$ _____
Pulpwood			
Balsam Fir	4 Cords	\$ 5.25/Cord	\$ _____
Basswood	166 Cords	\$ 5.55/Cord	\$ _____
Mixed Hardwood	1,343 Cords	\$ 12.95/Cord	\$ _____
Mixed Spruce	6 Cords	\$ 11.15/Cord	\$ _____

*The volumes are statistically estimated within plus (+) or minus (-) 15.80 percent at 95% confidence level. These estimated volumes are final and not subject to adjustment. Prospective bidders are urged to examine this timber and to make their own estimates of quantity and quality.

I understand that any or all bids may be rejected. All bids must be signed and all bid items must be bid or the bid form may be rejected. I also understand that consideration and awarding a contract will be based upon my past performance and ability to complete the contract based upon equipment and staffing subject to my control .

FEDERAL ID: ____ - ____ - ____ or SOCIAL SECURITY NUMBER: ____ - ____ - ____
Company or individual bidding: _____
Company representative's name: _____
Address: _____
City: _____ State: _____ Zip: _____

IF AVAILABLE, PLEASE PLACE THE PERSONALIZED LABEL FROM YOUR PROSPECTUS IN THE ABOVE BOX.

Individual or company representative's signature: _____ Date: _____

Phone number : _____ Email (optional): _____

**THE WINNING BIDDER MUST COMPLETE THE VERIFICATION OF WORKER'S DISABILITY COMPENSATION ACT
COMPLIANCE (ON REVERSE SIDE IF DOUBLE SIDED) WITHIN 21 DAYS OF SALE AWARD DATE**



TIMBER SALE VERIFICATION OF WORKER'S DISABILITY COMPENSATION ACT COMPLIANCE

As required by Act 317, P.A. 1969 (Worker's Compensation) and
Part 5 of Act 451 of 1994, as amended.

FOR DEPARTMENT USE ONLY

Sale Number (XX - XXX - XX - XX)

Forest Management Unit:

VERIFICATION OF WORKER'S DISABILITY COMPENSATION ACT COMPLIANCE

- This verification must be completed and submitted within 21 days of contract award and prior to the issuance of the timber sale contract.
- In addition, if boxes 2B or 2C are checked, then Notice of Exclusion or Certificate of Insurance must be submitted within twenty-one (21) days of the contract award and prior to the issuance of the timber sale contract.
- All Information must be typed or printed except for written signatures.

Please Check Appropriate Categories:

1. My business is organized as (you **must** check one of the boxes below):
 - A. ☐ Sole Proprietorship (individual)
 - B. ☐ Partnership
 - C. ☐ Corporation
2. You **must** check one of the boxes below:
 - A. ☐ I certify my business is a sole proprietorship and it has no employees but the sole proprietor. I am not subject to the Worker's Compensation Laws.
 - B. ☐ I certify my business has satisfied its obligation to the Worker's Compensation Act through the use of an approved Notice of Exclusion (BWC-337, Rev. 5/96). I will provide a copy of the Notice of Exclusion within 21 days of the contract award. (For questions or a copy of the BWC-337, please call the Worker's Compensation Bureau at 517-322-1195).
 - C. ☐ I certify my business has a Worker's Compensation Policy. I will provide an original Certificate of Insurance within twenty-one (21) days of the contract award.
3. If you have checked item 2(A) or 2(B), you **must** indicate the number of **both** full-time and part-time employees, other than yourself, including family members and active partners (if none, you must enter "0").

_____ Full-time Employees

_____ Part-time Employees

Name of Business		Federal ID (or) Social Security No.
Address		Telephone ()
City	State	ZIP

I hereby certify that the above information is true and correct. I agree to notify the Michigan DNR of any changes that occur in factors affecting my coverage during any of my present and future operations.

Signature of Owner or Authorized Representative

Title

Date

Please complete the "SEALED BID" information on the next page

Yeo Yeo Mix 26 (11-017-26)

T52N, R29W, SEC. 18; T52N, R30W, SEC. 13; Marquette COUNTY

In response to the notice of sale to be held 9:00 a.m. (local time) on January 8, 2026, I am hereby submitting my sealed bid (firm offer) for the following forest products to be cut. Bids for individual species must be at or above the advertised price. All non-responsive bid forms may be rejected.

<u>PRODUCTS & SPECIES</u>	<u>ESTIMATED VOLUME*</u>	<u>ADVERTISED PRICE</u>	<u>BID PRICE/UNIT</u>
Sawtimber			
Black Ash	2.2 MBF	\$ 33.00/MBF	\$ _____
Paper Birch	38.6 MBF	\$ 83.00/MBF	\$ _____
Red Maple	115.4 MBF	\$ 177.00/MBF	\$ _____
Sugar Maple	134.6 MBF	\$ 311.00/MBF	\$ _____
White Ash	60.8 MBF	\$ 54.00/MBF	\$ _____
Yellow Birch	17.1 MBF	\$ 128.00/MBF	\$ _____
Pulpwood			
Mixed Aspen	174 Cords	\$ 18.70/Cord	\$ _____
Mixed Hardwood	1,320 Cords	\$ 12.95/Cord	\$ _____
Paper Birch	274 Cords	\$ 5.20/Cord	\$ _____

*The volumes are statistically estimated within plus (+) or minus (-) 18.13 percent at 95% confidence level. These estimated volumes are final and not subject to adjustment. Prospective bidders are urged to examine this timber and to make their own estimates of quantity and quality.

I understand that any or all bids may be rejected. All bids must be signed and all bid items must be bid or the bid form may be rejected. I also understand that consideration and awarding a contract will be based upon my past performance and ability to complete the contract based upon equipment and staffing subject to my control .

FEDERAL ID: ____ - ____ - ____ or SOCIAL SECURITY NUMBER: ____ - ____ - ____
Company or individual bidding: _____
Company representative's name: _____
Address: _____
City: _____ State: _____ Zip: _____

IF AVAILABLE, PLEASE PLACE THE PERSONALIZED LABEL FROM YOUR PROSPECTUS IN THE ABOVE BOX.

Individual or company representative's signature: _____ Date: _____

Phone number : _____ Email (optional): _____

**THE WINNING BIDDER MUST COMPLETE THE VERIFICATION OF WORKER'S DISABILITY COMPENSATION ACT
COMPLIANCE (ON REVERSE SIDE IF DOUBLE SIDED) WITHIN 21 DAYS OF SALE AWARD DATE**



TIMBER SALE VERIFICATION OF WORKER'S DISABILITY COMPENSATION ACT COMPLIANCE

As required by Act 317, P.A. 1969 (Worker's Compensation) and
Part 5 of Act 451 of 1994, as amended.

FOR DEPARTMENT USE ONLY

Sale Number (XX - XXX - XX - XX)

Forest Management Unit:

VERIFICATION OF WORKER'S DISABILITY COMPENSATION ACT COMPLIANCE

- This verification must be completed and submitted within 21 days of contract award and prior to the issuance of the timber sale contract.
- In addition, if boxes 2B or 2C are checked, then Notice of Exclusion or Certificate of Insurance must be submitted within twenty-one (21) days of the contract award and prior to the issuance of the timber sale contract.
- All information must be typed or printed except for written signatures.

Please Check Appropriate Categories:

1. My business is organized as (you **must** check one of the boxes below):
 - A. ☐ Sole Proprietorship (individual)
 - B. ☐ Partnership
 - C. ☐ Corporation
2. You **must** check one of the boxes below:
 - A. ☐ I certify my business is a sole proprietorship and it has no employees but the sole proprietor. I am not subject to the Worker's Compensation Laws.
 - B. ☐ I certify my business has satisfied its obligation to the Worker's Compensation Act through the use of an approved Notice of Exclusion (BWC-337, Rev. 5/96). I will provide a copy of the Notice of Exclusion within 21 days of the contract award. (For questions or a copy of the BWC-337, please call the Worker's Compensation Bureau at 517-322-1195).
 - C. ☐ I certify my business has a Worker's Compensation Policy. I will provide an original Certificate of Insurance within twenty-one (21) days of the contract award.
3. If you have checked item 2(A) or 2(B), you **must** indicate the number of **both** full-time and part-time employees, other than yourself, including family members and active partners (if none, you must enter "0").

_____ Full-time Employees

_____ Part-time Employees

Name of Business		Federal ID (or) Social Security No.
Address		Telephone ()
City	State	ZIP

I hereby certify that the above information is true and correct. I agree to notify the Michigan DNR of any changes that occur in factors affecting my coverage during any of my present and future operations.

Signature of Owner or Authorized Representative

Title

Date

Please complete the "SEALED BID" information on the next page