



**DEPARTMENT OF NATURAL RESOURCES
STATE OF MICHIGAN
TIMBER SALE PROSPECTUS #7697**

SCHEDULED SALE DATE AND TIME: 2:00 p.m. (local time) on April 27, 2026.

LOCATION: **GWINN MGMT UNIT, 410 WEST M 35, GWINN, MI 49841.**

PROSPECTUS NOTE: The bidder is advised to inspect the sale area and review the location, estimated volumes, operating costs and contract terms of proposed sales. Please be aware that some landowners may request 60 days or more notice for access across their land.

Notice is hereby given that bids will be received by the Unit Manager, GWINN MANAGEMENT UNIT, for certain timber on the following described lands:

Dinotopia (32-016-25) / T45N, R22W, SEC. 15, NWNW,SWSW.

T45N, R22W, SEC. 16, E1/2NW,NE,NESW,E1/2SE.

T45N, R22W, SEC. 4 , SENW,SWNE,SWSW,S1/2SE.

T45N, R22W, SEC. 9 , N1/2NW,SEW.

Alger County, Advertised Price \$86,936.50, 228.8 Acres, Sugar Maple, Hardwood.

SALE NOTE: Payment Units 3, 4, and 9 are restricted to winter harvest (12/1 - 4/1). This sale requires a stream crossing, spec 4.1.2. This sale also requires access through private property, spec 4.4.1. Contact DNR for more information regarding private property access.

Access may be through private land.

Hummingbird Hideaway (32-026-25) / T46N, R25W, SEC. 29, SWNW,E1/2SW.

Marquette County, Advertised Price \$18,987.65, 39.4 Acres, Aspen, Hardwood.

SALE NOTE: Access for this sale is through private property, see spec 4.4.1. This sale also has operation caution spec 5.2.22.1.

Access may be through private land.

BID INSTRUCTIONS (VER. 10/10/2022):

1. Scheduled Bid Location, Date, and Time (2/11)

Bids must be received by the Unit Manager, GWINN OFFICE, 410 WEST M 35, GWINN, MI 49841, no later than 2:00 p.m. (local time) on April 27, 2026. For further information concerning this sale, contact Mike Brodeur at 906-346-9201 extension 103.

2. Bidder's Qualifications (10/22)

If all or part of a timber sale was prepared by a private contractor, the contractor and that contractor's company are not permitted to bid on the timber sale. A person must be 18 years of age or older to purchase timber. Permanent employees of the Department of Natural Resources or members of their immediate household may not bid. Former employees, in the permanent or seasonal class, may not bid until 3 months after the last day of active duty. Bids will not be accepted from individuals or companies appearing on the DNR/FRD No-Bid List. This list contains the names of purchasers who previously failed to execute a contract within 21-days or who have a history of poor performance.

3. Preparation of Sealed Bids (5/16)

Bid Forms may be completed online thru Michigan DNR Timber Sale Online Bidding (OLB) at www.michigan.gov/timberbidding or by completing the hardcopy Bid Form found in the Timber Sale Prospectus. Hardcopy Bid Forms shall be manually signed in ink. Registration in OLB is considered your 'signature' for all bids submitted thru that system. Bid prices must be entered for each species and product in the Bid Price column for all material subject to bidding and all fill-in blanks must be completed. If erasures or other changes appear on the hardcopy Bid Form, each erasure or change must be initialed by the person signing the bid.

4. Submission of Sealed Bids (5/16)

Bid forms may be obtained from the Unit Manager or thru OLB. Bids may be submitted hardcopy or thru OLB. All hardcopy bids must be submitted on the bid form and in an envelope clearly identified as described in this section. NOTE: Only one bid form per bid envelope. Sealed bids must be submitted to the Unit office designated in the prospectus and must be submitted at or prior to the time established in the prospectus. The envelope should show on the outside (a) the sale name or number and (b) the date and time of bid opening, as shown in the prospectus. Bids received after the time specified in the sale prospectus are late bids and will be rejected.

It is possible for a bidder to submit multiple bids on a single sale. For example, a bid may be submitted hardcopy and a bid may be submitted thru OLB. Or, two bidders from the same company could both submit bids on the same sale. If this were to happen, the State would accept all bids received and award the contract accordingly. All bidding and contractual requirements would apply to all bids received.

5. Public Opening of Sealed Bids (7/16)

If conditions permit, the sealed bids will be publicly opened and posted at the time and place set in the prospectus.

If a bidder, present at a bid opening, has submitted bids on more than one sale, that bidder may withdraw their unopened bid envelopes or announce the withdrawal of their online bid after being declared the successful bidder on one sale.

6. Award of Contract (1/11)

Award of the contract will be made to the Bidder whose bid, conforming to the prospectus, is most advantageous to the State of Michigan on the basis of total value at rates bid for the estimated quantities. The State reserves the right to reject any bid or waive any minor irregularity in bids received. A written award mailed (or otherwise furnished) to the successful Bidder shall be deemed to result in a binding contract without further action by either party.

7. Down Payment (1/11)

The Bidder to whom award is made must make a down payment within 21 days of the sale award. The amount of the down payment will be calculated as shown in the Bond and Payment Schedule of this prospectus. Only cash may be used to meet this requirement.

8. Performance Security (1/11)

As guarantee of faithful performance, a cash bond, certificate of deposit, surety bond or irrevocable letter of credit (LOC) is required within 21 days of the sale award. The amount of the performance security is shown in the Bond and

Payment Schedule of this prospectus. If an LOC or surety is used, the coverage must extend for at least 6 months beyond the contract expiration.

9. Worker's Compensation (10/22)

Purchaser shall obtain worker's compensation insurance to cover claims under Michigan's Worker's Disability Compensation Act of 1969 or similar employee benefit act of any other state applicable to an employee. Verification of Worker's Disability Compensation Act Compliance must be completed and submitted within 21 days of contract award and prior to the issuance of the timber sale contract. In addition, if applicable, Notice of Exclusion or Certificate of Insurance must also be submitted.

10. Timber Sale Contract (10/22)

Additional conditions and requirements common to all timber sales are listed on the timber sale contract (R4031) and are available on line at www.michigan.gov/timber. Contact the Unit Manager for additional information or a sample contract. Within 21 days of the date of the award letter, the bidder must sign the contract and provide the required down payment, performance security, and verification of worker's disability compensation. The down payment and performance security shall be in accordance with the provisions of the timber sale contract, in the sums stated in this prospectus. If these actions are not taken, then the Bidder, the Bidder's corporation, and the corporation's principals may not be permitted to bid on State timber sales for a period of 3 months after the first offense, 6 months after the second offense, and 1 year after the third offense. An offense will only be counted against the Bidder for 5 years. In addition, the Bidder certifies that if awarded this contract, the Bidder will complete the timber sale contract in accordance with its terms and any modifications thereof including requirements to purchase, cut, and remove the included timber by the expiration date.

Payment Unit values in the State Forest Timber Sale Contract are calculated based on the advertised value of the Payment Unit as a percentage of the total advertised value of the contract. The advertised value of each Payment Unit is given in the Description of Timber by Payment Unit table on the Timber Sale Information page. For example, if the value of Payment Unit 1 is advertised as \$1,500 and the total Timber Sale value is advertised as \$10,000, the contract price for Payment Unit 1 will be 15% of the total bid price ($\$1,500/\$10,000 * 100$).

11. Disclaimer of Estimates and Bidder's Warranty of Inspection (10/22)

Before submitting this bid, the Bidder is advised and cautioned to inspect the sale area, review the requirements of the sale contract, and take other steps as may be reasonably necessary to ascertain the location, estimated volumes, construction estimates, and operating costs of the proposed sale. Failure to do so will not relieve the Bidder from responsibility for completing the contract.

The Bidder warrants that this bid is submitted solely on the basis of the Bidder's examination and inspection of the quality and quantity of the timber offered for sale and the Bidder's opinion of the value thereof and the costs of recovery. No reliance should be placed on the State of Michigan's estimates of timber quality, quantity or costs of recovery. Bidder further acknowledges that the State of Michigan: (i) expressly disclaims any warranty of fitness of timber for any purpose; (ii) offers this timber as is without any warranty of quality (merchantability) or quantity and (iii) expressly disclaims any warranty as to the quantity or quality of timber sold.

12. Certification and Chain-of-Custody (10/22)

Unless otherwise indicated in the contract under section 7 – Other Conditions of the Sale Specific Conditions & Requirements, the area encompassed by this timber sale is certified to the standards of the Forest Stewardship Council (FSC) - Certificate #SCS-FM/COC-00090N and the Sustainable Forestry Initiative (SFI) - Certificate #NSF-SFIS-5Y031-SF5. Forest products from this sale may be delivered to the mill as "FSC 100% and / or SFI certified" as long as the contractor hauling the forest products is chain-of-custody (COC) certified or covered under a COC certificate from the destination mill. The purchaser is responsible for maintaining COC after leaving the sale area.

13. Good Neighbor Authority (GNA) Requirements (10/22)

If the name of this timber sales contains the acronym GNA, it is authorized by the Good Neighbor Authority (GNA) and covered by various agreements between the U.S. Forest Service and the State. The timber sale occurs on federal land and the following conditions apply:

GNA contracts on US Forest Service land will not be awarded to purchasers on the Federal list of excluded parties. The System for Award Management (SAM) will be checked for active excluded parties prior to award of contract. In

addition, the Bidder to whom award is made must complete an Assurance Regarding Felony Conviction or Tax Delinquent Status for Corporate Applicants (AD-3031).

14. Good Neighbor Authority (GNA) Requirements, con't (10/22)

Bidder certifies, by signing this bid form, that to the best of Bidder's knowledge that the following representations are accurate and complete.

- a. That the Bidder and its principals are not presently debarred, suspended, proposed for debarment, declared ineligible, or voluntary excluded from timber sales (covered transactions) by any Federal department or agency.
- b. That the Bidder and its principals have not within a 3-year period preceding this bid been convicted of or had a civil judgment rendered against them for commission of fraud or a criminal offense in connection with obtaining , attempting to obtain, or performing a public (Federal, State, or local) transaction or contract under a public transaction; violation of Federal or State antitrust statutes or commission of embezzlement, theft, forgery, bribery, falsification or destruction of records, making false statements, or receiving stolen property.
- c. That the Bidder and its principals are not presently indicted for or otherwise criminally or civilly charged by a governmental entity (Federal, State, or local) with commission of any of the offenses enumerated in paragraph b of this certification.
- d. That the Bidder and its principals have not within a 3-year period preceding this bid had one or more public transactions (Federal, State, or local) terminated for breach or default of a timber or forest product contract.

Bidders that cannot certify this requirement, in whole or in part, shall submit an explanation with their bid.

Scott Bowen
Director

TIMBER SALE INFORMATION

Dinotopia (32-016-25)

T45N, R22W, SEC. 15; T45N, R22W, SEC. 16; T45N, R22W, SEC. 4; T45N, R22W, SEC. 9.
Alger County (Advertised Price \$86,936.50)

SALE NOTE: Payment Units 3, 4, and 9 are restricted to winter harvest (12/1 - 4/1). This sale requires a stream crossing, spec 4.1.2. This sale also requires access through private property, spec 4.4.1. Contact DNR for more information regarding private property access.

Access may be through private land.

A timber sale contract for this lump sum, sealed bid timber sale will be awarded to the responsible bidder offering the highest sealed bid price. All units of volume listed below were estimated using the Inventory Manager computer program and the new Michigan taper model. Bids must be at or above the following advertised price for each product and species:

<u>PRODUCTS & SPECIES</u>	<u>ESTIMATED UNITS*</u>	<u>ADVERTISED PRICE</u>
Sawtimber		
Basswood	5.0 MBF	\$ 60.00 / MBF
Beech	4.5 MBF	\$ 127.00 / MBF
Black Cherry	1.7 MBF	\$ 78.00 / MBF
Red Maple	80.7 MBF	\$ 122.00 / MBF
Sugar Maple	197.5 MBF	\$ 222.00 / MBF
Yellow Birch	3.2 MBF	\$ 27.00 / MBF
Pulpwood		
Balsam Fir	91 Cords	\$ 11.10 / Cord
Balsam Poplar	8 Cords	\$ 21.55 / Cord
Mixed Hardwood	209 Cords	\$ 13.40 / Cord
Quaking Aspen	22 Cords	\$ 21.55 / Cord
Red Maple	680 Cords	\$ 13.40 / Cord
Sugar Maple	1,288 Cords	\$ 13.40 / Cord
White Spruce	112 Cords	\$ 11.85 / Cord

* The total volume is statistically estimated within plus (+) or minus (-) 8.77 percent. There are an estimated 3,092 cords on this timber sale, plus or minus 271 cords at the 95% confidence level. The estimated units are final and not subject to adjustment. Prospective bidders are urged to examine this timber and to make their own estimates of quantity and quality.

BOND AND PAYMENT SCHEDULE:

1. A bond in the amount of \$8,694.00 to insure faithful performance of the conditions of the contract will be deposited by the successful bidder within 21 days of the sale award.
2. Cutting in any sale or unit without the required advance payment would be considered a trespass.
3. Total payment must be paid in advance or according to the following schedule :
 - (a) Ten percent (10%) of the sale value must be paid within 21 days of the sale award.
 - (b) The 10% down payment will be credited towards the first unit cut.
 - (c) Payment for each of the following units must be made before cutting begins in that unit:

PAYMENT UNIT NUMBER	PERCENT OF TOTAL SALE VALUE
01	21.3%
02	8.2%
03	4.9%
04	14.6%
05	21.8%
06	6.6%
07	14.7%
08	2.4%
09	3.5%
10	2.0%

4. If no cutting takes place, the 10% down payment will not be refunded.
5. Operations on the contract issued will terminate on 06/30/2030.

SALE STATISTICS

Volumes were calculated in cubic feet using the Michigan taper model. Cubic foot volume includes all wood inside bark for the product indicated. For display purposes, cubic feet were converted to cords and MBF using a simple conversion factor, e.g. 79 cubic feet per cord and 185 cubic feet per MBF. The cubic foot volumes are precise; the cords and MBF volumes are not. Cubic foot volume cannot be directly converted to cords or boards with precision.

SALE VOLUMES

The total estimated sale volume may not equal the sum of the species/products due to the nature of statistical calculations associated with double sampling methodology.

VOLUME			STATISTICAL RANGE IN CORDS	
TOTAL CUBIC FEET	TOTAL CORDS	PERCENT ERROR	MINIMUM	MAXIMUM
244,301	3,092	8.77%	2,821	3,364

VDU VOLUMES

A VDU is a Volume Determination Unit. Volumes and their associated statistics are calculated at the VDU level and summarized to the sale level. There is often a one to one relationship between a VDU and a Payment Unit, but not always, depending on the cruise design. Refer to the VDU TO PAYMENT UNIT table.

VDU	VOLUME		PERCENT ERROR	RANGE IN CORDS	
	TOTAL CUBIC FEET	TOTAL CORDS		MINIMUM	MAXIMUM
3	2,824	36	78.89%	8	64
7	37,020	469	23.55%	358	579
13	29,123	369	24.85%	277	460
15	7,227	91	54.15%	42	141
28	14,037	178	42.26%	103	253
30	17,411	220	30.78%	153	288
38	59,995	759	17.37%	628	891
47	5,441	69	42.98%	39	98
50	40,786	516	21.39%	406	627
51	9,873	125	73.58%	33	217
76	20,565	260	27.86%	188	333
TOTAL:	244,301	3,092		2,233	3,951

VDU TO PAYMENT UNIT

When a VDU is associated with more than one Payment Unit (PU), the VDU volumes are assigned to the PU based on acres of the VDU within the PU.

VDU	VDU ACRES	PU	PU ACRES
TOTAL:			

DESCRIPTION OF TIMBER BY PAYMENT UNIT (PU)

PU	MARKET GROUP	PRODUCT	QUANTITY	UNIT	ACRES	ADVERTISE PRICE
1	Red Maple	Sawtimber	8.4	MBF	33.1	\$18,497.30
	Sugar Maple		57.7	MBF		
	Balsam Fir	Pulpwood	9	Cords		
	Mixed Hardwood		4	Cords		
	<i>Black Cherry</i>		4	Cords		
	Red Maple		23	Cords		
	Sugar Maple		310	Cords		
	White Spruce		4	Cords		
2	Basswood	Sawtimber	2.9	MBF	37.8	\$7,116.95
	Red Maple		4.7	MBF		
	Sugar Maple		10.1	MBF		
	Balsam Fir	Pulpwood	10	Cords		
	Mixed Hardwood		38	Cords		
	<i>Basswood</i>		31	Cords		
	<i>Black Cherry</i>		4	Cords		
	<i>Ironwood</i>		3	Cords		
	Red Maple		120	Cords		
	Sugar Maple		132	Cords		
	White Spruce		11	Cords		
3	Red Maple	Sawtimber	6.1	MBF	12.2	\$4,268.00
	Sugar Maple		7.0	MBF		
	Mixed Hardwood	Pulpwood	19	Cords		
	<i>Beech</i>		11	Cords		
	<i>Black Cherry</i>		8	Cords		
	Red Maple		45	Cords		
	Sugar Maple		83	Cords		
4	Basswood	Sawtimber	1.0	MBF	34.4	\$12,725.80
	Red Maple		21.1	MBF		
	Sugar Maple		30.4	MBF		
	Balsam Fir	Pulpwood	14	Cords		
	Mixed Hardwood		1	Cords		
	<i>Basswood</i>		1	Cords		
	Quaking Aspen		8	Cords		
	Red Maple		98	Cords		
Sugar Maple		126	Cords			
5	Basswood	Sawtimber	0.8	MBF	39.6	\$18,915.65
	Beech		3.5	MBF		
	Red Maple		11.5	MBF		
	Sugar Maple		50.4	MBF		
	Balsam Fir	Pulpwood	3	Cords		
	Mixed Hardwood		60	Cords		
	<i>Basswood</i>		2	Cords		
	<i>Beech</i>		51	Cords		
	<i>Black Cherry</i>		3	Cords		
	<i>Ironwood</i>		4	Cords		
	Quaking Aspen		11	Cords		
	Red Maple		102	Cords		
Sugar Maple		253	Cords			
6	Basswood	Sawtimber	0.3	MBF	12.0	\$5,732.75
	Beech		1.0	MBF		
	Red Maple		3.5	MBF		
	Sugar Maple		15.3	MBF		
	Balsam Fir	Pulpwood	1	Cords		
	Mixed Hardwood		18	Cords		
	<i>Beech</i>		16	Cords		
	<i>Black Cherry</i>		1	Cords		

DESCRIPTION OF TIMBER BY PAYMENT UNIT (PU), CON'T

PU	MARKET GROUP	PRODUCT	QUANTITY	UNIT	ACRES	ADVERTISE PRICE
6 con't	<i>Ironwood</i>	<i>Pulpwood</i>	1	<i>Cords</i>		
	Quaking Aspen		3	Cords		
	Red Maple		31	Cords		
	Sugar Maple		77	Cords		
7	Red Maple	Sawtimber	21.4	MBF	38.0	\$12,778.95
	Sugar Maple		20.6	MBF		
	Balsam Fir	Pulpwood	25	Cords		
	Balsam Poplar		8	Cords		
	Mixed Hardwood		11	Cords		
	<i>Black Cherry</i>		6	<i>Cords</i>		
	<i>Ironwood</i>		5	<i>Cords</i>		
	Red Maple		150	Cords		
	Sugar Maple		215	Cords		
	White Spruce		9	Cords		
8	Black Cherry	Sawtimber	1.7	MBF	4.3	\$2,093.20
	Red Maple		1.7	MBF		
	Sugar Maple		4.9	MBF		
	Balsam Fir	Pulpwood	2	Cords		
	Mixed Hardwood		4	Cords		
	<i>Black Cherry</i>		4	<i>Cords</i>		
	Red Maple		23	Cords		
	Sugar Maple		21	Cords		
9	Red Maple	Sawtimber	2.3	MBF	13.4	\$3,046.75
	Yellow Birch		3.2	MBF		
	Balsam Fir	Pulpwood	7	Cords		
	Mixed Hardwood		45	Cords		
	<i>Beech</i>		1	<i>Cords</i>		
	<i>Yellow Birch</i>		44	<i>Cords</i>		
	Red Maple		83	Cords		
	Sugar Maple		37	Cords		
	White Spruce		33	Cords		
10	Sugar Maple	Sawtimber	1.1	MBF	4.0	\$1,761.15
	Balsam Fir	Pulpwood	20	Cords		
	Mixed Hardwood		9	Cords		
	<i>Black Cherry</i>		7	<i>Cords</i>		
	<i>Ironwood</i>		2	<i>Cords</i>		
	Red Maple		5	Cords		
	Sugar Maple		34	Cords		
	White Spruce		55	Cords		
TOTAL:			292.6	MBF		
TOTAL:			2,410	Cords		

Sale Specific Conditions & Requirements

Sale Name: Dinotopia

Sale Number: 32-016-25 Seq#: 1

1 - Sale Area

1.2 - Boundaries

1.2.1 - Painted Boundaries (9/19)

The sale boundary and Payment Unit boundaries are marked and identified by blue, red and yellow paint. Exterior sale boundary lines against private property are marked with blue paint. Exterior sale boundary lines against state are marked with red paint. Interior Payment Unit boundaries are marked with yellow paint. Special Protection Areas are marked with red paint; no harvesting activities may occur within these areas. The painted boundary line trees are not Included Timber and are to be protected unless marked with orange paint. Yellow painted trees designating an interior Payment Unit boundary are only to be cut when all surrounding Payment Units have been paid.

2 - Timber Specifications

2.1 - Included Timber

2.1.1 - Clearcut Unit(s) with Unmerchantable Trees (6/14)

Within Payment Unit(s) 9 and 10, cut all trees that are two (2) inches or more at DBH except:

Within Payment Unit(s) 9, do not cut cedar, hemlock and healthy beech.

Within Payment Unit(s) 10, do not cut cedar, hemlock, and white pine.

2.1.3 - Cut Tree Marked Unit(s) (12/08)

Within Payment Unit(s) 1-8, all trees are designated for cutting when marked with orange paint above and below stump height, regardless of merchantability.

2.1.11 - Description of Timber Note (2/04)

Note that Payment Unit 8 is an optional Payment Unit. Removing this Payment Unit from the sale is a contract modification which requires a Timber Sale Contract Amendment.

3 - Payments

3.4 - Damaged Timber

3.4.1 - Damaged Timber (12/24)

General Condition and Requirement 3.4 Damaged Timber, defines liquidated damages for undesignated live merchantable trees which are cut or injured. In addition, extreme care should be taken to avoid damage to tree seedlings and saplings. No damage is acceptable to undesignated live merchantable trees. Within the Sale Area, if more than 10% of trees (> 4.5" DBH) within a specified area of the sale are damaged, liquidated damages will be assessed for all trees damaged. Rates will be in accordance with General Condition and Requirement 3.4 Damaged Timber.

4 - Transportation

4.1 - Construction

4.1.1 - Stream Crossings, General (1/25)

All stream crossing structures will be temporary and, therefore, shall be provided by the Purchaser and must be removed upon completion of the sale. All permits for stream crossings will be provided by the DNR. The DNR must be given 60-day notice for requested stream crossing permits.

4.1.2 - Stream Crossings, Specific (3/11)

Access to the northern portion of Payment Unit 7 will require a stream crossing, at the location shown on the timber sale map. The DNR has obtained the required stream crossing permit for Payment Unit 7; the stream crossing will require timber mats and frozen ground conditions. Contact Sale Administrator for copy of permit. There is a drainage/intermittent stream in Payments Units 2 and 4, as shown on the Timber Sale Map. The Payment Units are accessible without the necessity of crossing the stream. Mats will be needed for crossing low drainage area. Trees along the streams are marked with double red

slashes to help identify the location.

4.1.5 - Culverts (5/14)

Roads may require the installation of culverts for cross drainage or at natural drainage-ways. If culverts are needed in these locations, their placement and size will be specified by the Sale Administrator, and they shall be installed prior to hauling. The culverts shall be new, corrugated metal or plastic gauge. If culverts are removed, fill shall be removed from wetland soils as specified. Soils shall be maintained and left in a non-erodible condition, with water bars, seed, fertilizer, mulch, and slash installed as directed by the Sale Administrator and as specified in the BMP manual. Stream crossing permits, if needed, will be obtained by the DNR.

4.2 - Maintenance

4.2.2 - Fill Material (4/07)

To maintain roads, fill material may be needed in areas where "holes" exist or may be expected to develop. This fill material should be placed before trucking begins. Contact the Sale Administrator regarding the availability of onsite sand or gravel from adjacent State-owned lands.

4.2.3 - Road maintenance (8/13)

The following road maintenance may be needed: Within 60 days of completion of hauling, or if no hauling occurs for 60 days, the road may need to be maintained and graded. This includes cleaning of drainage areas, grading, crowning and filling with gravel, if necessary. Damages will be assessed if grading/repair does not occur.

4.2.5 - Two Wheel Drive Condition (2/04)

All existing trail roads on and adjacent to the Sale Area must be passable by two-wheel drive traffic for the duration of the sale.

4.4 - Access

4.4.1 - Private property access (3/11)

Permission for access across private land is the responsibility of the Purchaser. Should the Purchaser desire to cross private land, a copy of the written permission from the private landowner may be required by the DNR.

5 - Operations

5.2 - Conduct of Operations

5.2.1 - Slash

5.2.1.13 - Dispose of Slash as Directed (12/05)

Slash is to be disposed of as directed by the Sale Administrator.

5.2.3 - Operating Restrictions

5.2.3.1 - Operating Restrictions (9/11)

Within Payment Unit(s) 3, 4, and 9, unless changed by written agreement, cutting, skidding, and hauling are limited to frozen conditions generally the period of 12/1 - 4/1. This restriction is due to wet soils.

5.2.3.3 - Bark Slippage Restriction (3/09)

Within Payment Unit(s) 1-8, unless changed by written agreement, cutting and skidding are not permitted during the period of April 15 to July 15. This restriction is because of bark slippage.

5.2.17 - Timber Mats and Interlocking Composite Mats (5/23)

Some roads or skid trails require extra protection such as that afforded by interlocking composite mats or another approved system. If available, mats may be borrowed from the DNR. A Timber Sale Contract Amendment will be used to document the Purchaser's use of the DNR's mats. Contact the Sale Administrator regarding availability and pick-up. Composite mats are only available from the Grayling field office and the Marquette ICC. The Purchaser is responsible for picking up and hauling the mats to and from the site. The composite mats will require DNR staff onsite for installation and removal. Contact the sale administrator to schedule at least 30 days before desired install/removal date. All mats must be cleaned prior to drop off. This may include, but is not limited to, power washing and brushing to remove mud and debris. A charge of \$2,000.00 per composite mat will be assessed for all damaged or non-returned mats. Damage for the composite mats is defined as cracked or broken mats.

5.2.22 - Operating Caution

5.2.22.1 - Operating Caution (6/11)

It is recommended, but not required, that within Payment Unit(s) 2, and 6-8, cutting, skidding, and hauling occur during dry summer or frozen winter conditions. The reason for the recommendation is due to areas of wet soils.

5.2.38 - No Decking Against Live Trees (2/04)

Cut products may not be decked against unmarked or designated leave trees.

5.4 - Soil Protection

5.4.1 - Rutting Restriction, General (7/16)

Operations are to cease immediately if equipment and weather conditions result in rutting of roads and/or skid trails which are 12 inches or greater in depth and 50 feet in length. The Unit Manager or his/her representative may restrict hauling and/or skidding if ruts exceed the specified depth. With the Unit Manager or his/her representative's approval, the Purchaser may return to the area when the risk of rutting has decreased.

5.4.2 - Skid Trails (2/04)

Skid trails up and down slopes should be avoided. If, however, this is unavoidable, these trails will be left in a non-erodible condition using water bars, logs, and slash. Placing of slash on these skid trails while logging is ongoing may alleviate need for any further action. At the direction of the Sale Administrator, seed, fertilizer, and mulch may also be required.

5.4.4 - Slope Protection (9/19)

Skid trails and roads on slopes shall be water barred with slash, stumps, and/or clean straw bales native to the area as soon as use is complete to prevent erosion.

6 - Safety and Fire Prevention

6.2 - Signing

6.2.1 - Road Posting (10/20)

The Purchaser is responsible for posting and maintaining caution signs on Sundell Road and Ladoga Landing Road prior to beginning operations. The road must be posted at appropriate distances from the Sale Area to warn of logging activity and truck traffic. Signs must be removed when harvest operations are suspended or completed. The Purchaser will provide these signs.



TIMBER SALE MAP

This information provided by authority of Part 525, 1994 PA 451, as amended.

Sale Number

32-016-25

Date

09/30/2025

Forest Management Unit

County

Mapped By: Siler

Scale

Page

Of

Gwinn Mgt Unit

Alger

Cruised By: Siler, Gould & Caron

1:15,100

1

2

Township
45N

Range
22W

Section(s) and
Subdivision(s) Sec. 9 N1/2NW,SENW;

Sec. 15 NWNW,SWSW; Sec. 16 E1/2NW,NE,NESW,E1/2SE; Sec. 4 SENW,SWNE,SWSW,S1/2SE;

Cover Type

A = Aspen	J = Jack Pine	O = Oak	U = Upland Brush
B = Paper Birch	K = Rock	P = Lowland Poplar	UM = Upland Mix Forest
C = Cedar	L = Lowland Brush	Q = Mixed Swamp Conifer	V = Bog or Marsh
D = Treed Bog	LM = Lowland Mix Forest	R = Red Pine	W = White Pine
E = Swamp Hardwoods	M = Maple, Beech, Birch	S = Black Spruce	X = Non Stocked
F = Spruce/Fir	MC = Mixed Conifer	T = Tamarack	Y = Sand
G = Grass	MD = Mixed Deciduous	Z = Water	
H = Hemlock	N = Marsh		

Density

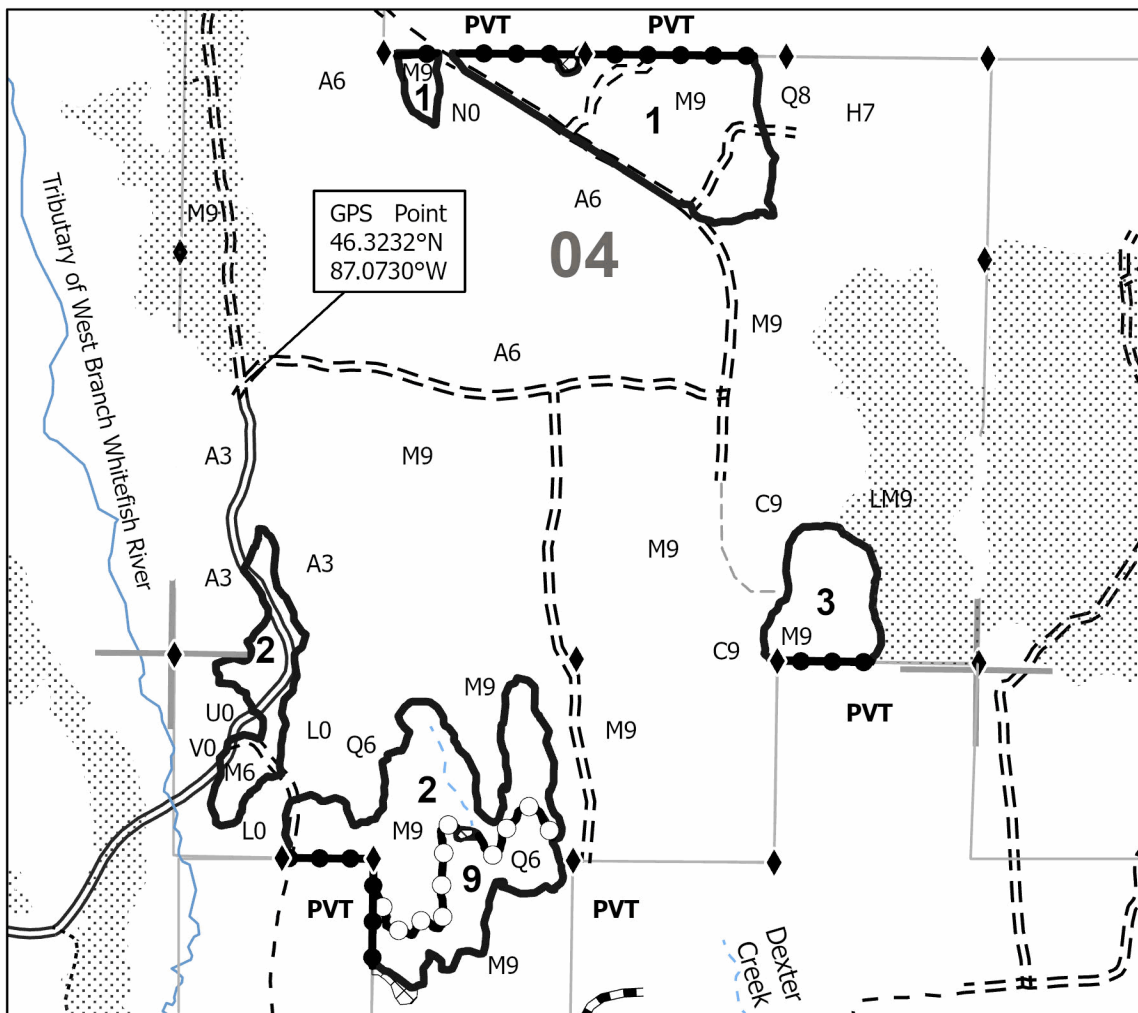
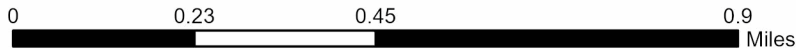
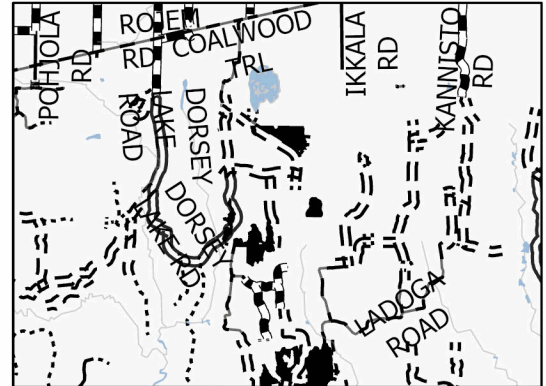
0 = Non Stocked	5 = Pole Timber Medium
1 = Seedling Sapling Poor	6 = Pole Timber Well
2 = Seedling Sapling Medium	7 = Saw Timber Poor
3 = Seedling Sapling Well	8 = Saw Timber Medium
4 = Pole Timber Poor	9 = Saw Timber Well

Payment Unit Number	Acres	Payment Unit Number	Acres
1	33.1	6	12
2	37.8	7	38
3	12.2	8	4.3
4	34.4	9	13.4
5	39.6	10	4

DINOTOPIA

Compartment 32102
228.8 Acres

Locator Map 1:100,000



Legend

- Against State (Red)
- Private Line (Blue)
- Payment Unit (Yellow)
- State Boundary
- Special Protection Area
- Skid Trail
- Primary Forest Road
- Forest Access Route
- Administrative Access Only
- Government Gravel/Dirt
- Private Gravel/Dirt
- Intermittent Stream
- Perennial River
- Survey Grade Corner
- Bridge
- Section Corner
- Nearby Timber Sale





TIMBER SALE MAP

This information provided by authority of Part 525, 1994 PA 451, as amended.

Sale Number
32-016-25

Date
09/30/2025

Forest Management Unit	County	Mapped By: Siler
Gwinn Mgt Unit	Alger	Cruised By: Siler, Gould & Caron

Scale	Page	Of
1:15,100	2	2

Township	Range	Section(s) and Subdivision(s)
45N	22W	Sec. 9 N1/2NW,SENW; Sec. 15 NWNW,SWSW; Sec. 16 E1/2NW,NE,NESW,E1/2SE; Sec. 4 SENW,SWNE,SWSW,S1/2SE;

Cover Type			
A = Aspen	J = Jack Pine	O = Oak	U = Upland Brush
B = Paper Birch	K = Rock	P = Lowland Poplar	UM = Upland Mix Forest
C = Cedar	L = Lowland Brush	Q = Mixed Swamp Conifer	V = Bog or Marsh
D = Treed Bog	LM = Lowland Mix Forest	R = Red Pine	W = White Pine
E = Swamp Hardwoods	M = Maple, Beech, Birch	S = Black Spruce	X = Non Stocked
F = Spruce/Fir	MC = Mixed Conifer	T = Tamarack	Y = Sand
G = Grass	MD = Mixed Deciduous	Z = Water	
H = Hemlock	N = Marsh		

Density	
0 = Non Stocked	5 = Pole Timber Medium
1 = Seedling Sapling Poor	6 = Pole Timber Well
2 = Seedling Sapling Medium	7 = Saw Timber Poor
3 = Seedling Sapling Well	8 = Saw Timber Medium
4 = Pole Timber Poor	9 = Saw Timber Well

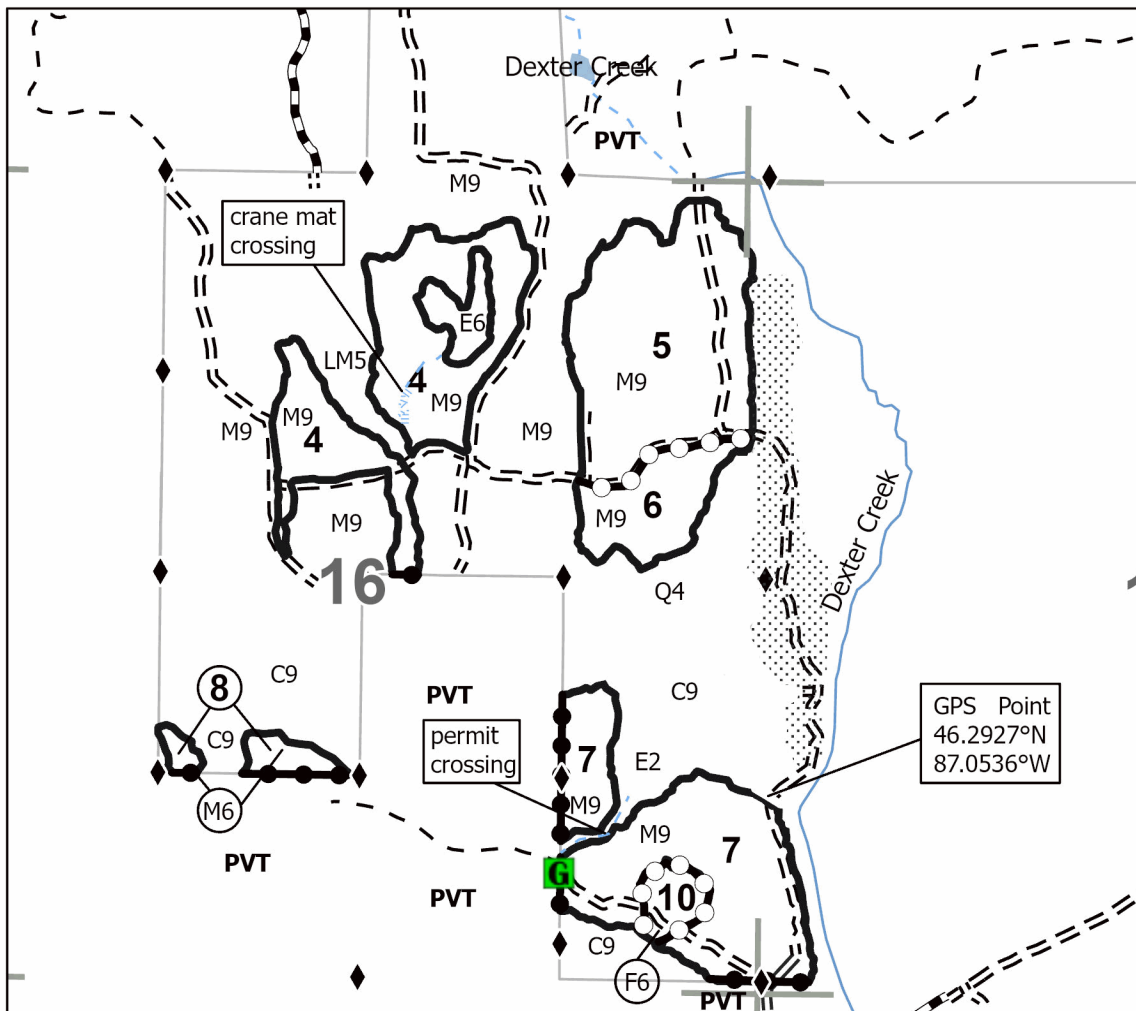
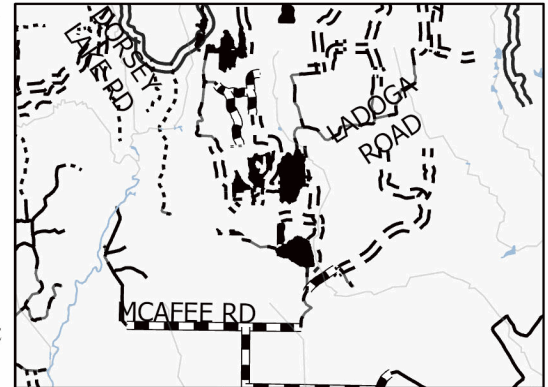
Payment Unit Number	Acres	Payment Unit Number	Acres
1	33.1	6	12
2	37.8	7	38
3	12.2	8	4.3
4	34.4	9	13.4
5	39.6	10	4

DINOTOPIA

Compartment 32102

228.8 Acres

Locator Map 1:100,000



Legend

- Against State (Red)
- Private Line (Blue)
- Payment Unit (Yellow)
- State Boundary
- Primary Forest Road
- Forest Access Route
- Government Gravel/Dirt
- Private Gravel/Dirt
- Intermittent Stream
- Perennial River
- Drain
- Drain
- Survey Grade Corner
- Gate
- Section Corner
- Nearby Timber Sale



TIMBER SALE INFORMATION

Hummingbird Hideaway (32-026-25)
 T46N, R25W, SEC. 29.
 Marquette County (Advertised Price \$18,987.65)

SALE NOTE: Access for this sale is through private property, see spec 4.4.1. This sale also has operation caution spec 5.2.22.1.

Access may be through private land.

A timber sale contract for this lump sum, sealed bid timber sale will be awarded to the responsible bidder offering the highest sealed bid price. All units of volume listed below were estimated using the Inventory Manager computer program and the new Michigan taper model. Bids must be at or above the following advertised price for each product and species:

<u>PRODUCTS & SPECIES</u>	<u>ESTIMATED UNITS*</u>	<u>ADVERTISED PRICE</u>
Sawtimber		
Paper Birch	2.6 MBF	\$ 84.00 / MBF
Red Maple	1.4 MBF	\$ 122.00 / MBF
Pulpwood		
Balsam Fir	9 Cords	\$ 11.10 / Cord
Jack Pine	7 Cords	\$ 43.90 / Cord
Mixed Aspen	502 Cords	\$ 21.55 / Cord
Mixed Hardwood	74 Cords	\$ 13.40 / Cord
Mixed Spruce	119 Cords	\$ 11.85 / Cord
Red Maple	371 Cords	\$ 13.40 / Cord

* The total volume is statistically estimated within plus (+) or minus (-) 20.19 percent. There are an estimated 1,092 cords on this timber sale, plus or minus 221 cords at the 95% confidence level. The estimated units are final and not subject to adjustment. Prospective bidders are urged to examine this timber and to make their own estimates of quantity and quality.

BOND AND PAYMENT SCHEDULE:

- A bond in the amount of \$1,329.00 to insure faithful performance of the conditions of the contract will be deposited by the successful bidder within 21 days of the sale award.
- Cutting in any sale or unit without the required advance payment would be considered a trespass.
- Total payment must be paid in advance or according to the following schedule :
 - Ten percent (10%) of the sale value must be paid within 21 days of the sale award.
 - The remainder is due before cutting begins.
 - Payment for each of the following units must be made before cutting begins in that unit:

<u>PAYMENT UNIT NUMBER</u>	<u>PERCENT OF TOTAL SALE VALUE</u>
01	100.0%
- If no cutting takes place, the 10% down payment will not be refunded.
- Operations on the contract issued will terminate on 06/30/2029.

SALE STATISTICS

Volumes were calculated in cubic feet using the Michigan taper model. Cubic foot volume includes all wood inside bark for the product indicated. For display purposes, cubic feet were converted to cords and MBF using a simple conversion factor, e.g. 79 cubic feet per cord and 185 cubic feet per MBF. The cubic foot volumes are precise; the cords and MBF volumes are not. Cubic foot volume cannot be directly converted to cords or boards with precision.

SALE VOLUMES

The total estimated sale volume may not equal the sum of the species/products due to the nature of statistical calculations associated with double sampling methodology.

<u>VOLUME</u>		<u>STATISTICAL RANGE IN CORDS</u>		
<u>TOTAL CUBIC FEET</u>	<u>TOTAL CORDS</u>	<u>PERCENT ERROR</u>	<u>MINIMUM</u>	<u>MAXIMUM</u>
86,304	1,092	20.19%	872	1,313

VDU VOLUMES

A VDU is a Volume Determination Unit. Volumes and their associated statistics are calculated at the VDU level and summarized to the sale level. There is often a one to one relationship between a VDU and a Payment Unit, but not always, depending on the cruise design. Refer to the VDU TO PAYMENT UNIT table.

VDU	VOLUME		PERCENT ERROR	RANGE IN CORDS	
	TOTAL CUBIC FEET	TOTAL CORDS		MINIMUM	MAXIMUM
70	86,304	1,092	20.20%	872	1,313
TOTAL:	86,304	1,092		872	1,313

VDU TO PAYMENT UNIT

When a VDU is associated with more than one Payment Unit (PU), the VDU volumes are assigned to the PU based on acres of the VDU within the PU.

VDU	VDU ACRES	PU	PU ACRES
TOTAL:			

DESCRIPTION OF TIMBER BY PAYMENT UNIT (PU)

PU	MARKET GROUP	PRODUCT	QUANTITY	UNIT	ACRES	ADVERTISE PRICE
1	Paper Birch	Sawtimber	2.6	MBF	39.4	\$18,987.65
	Red Maple		1.4	MBF		
	Balsam Fir	Pulpwood	9	Cords		
	Jack Pine		7	Cords		
	Mixed Aspen		502	Cords		
	<i>B. T. Aspen</i>		100	Cords		
	<i>Quaking Aspen</i>		402	Cords		
	Mixed Hardwood		74	Cords		
	<i>Paper Birch</i>		71	Cords		
	<i>Sugar Maple</i>		3	Cords		
	Mixed Spruce		119	Cords		
	<i>Black Spruce</i>		90	Cords		
	<i>White Spruce</i>		29	Cords		
	Red Maple		371	Cords		
TOTAL:			4.0	MBF		
TOTAL:			1,082	Cords		

Sale Specific Conditions & Requirements

Sale Name: Hummingbird Hideaway

Sale Number: 32-026-25 Seq#: 1

1 - Sale Area

1.2 - Boundaries

1.2.1 - Painted Boundaries (9/19)

The sale boundaries are marked and identified by blue and red paint. Exterior sale boundary lines against private property are marked with blue paint. Exterior sale boundary lines against state are marked with red paint. The painted boundary line trees are not Included Timber and are to be protected.

2 - Timber Specifications

2.1 - Included Timber

2.1.1 - Clearcut Unit(s) with Unmerchantable Trees (6/14)

Within Payment Unit(s) 1, cut all trees that are two (2) inches or more at DBH, except do not cut oak, hemlock, cedar, red pine and white pine.

4 - Transportation

4.1 - Construction

4.1.3 - Slash and Earthen Piles (8/04)

Piles or windrows of earth along roads and landings that have been widened or constructed shall be leveled. Slash from road maintenance or construction, including stumps, shall be dispersed throughout the sale.

4.1.4 - Timber Removed for Construction (3/23)

Trees cut or damaged in the process of pre-approved road, landing, or skid trail construction will be decked in an area separate from other Designated Timber and not removed until measured by the Sale Administrator. Payment will be made at contract prices or average prices, if not on the contract.

4.1.6 - Road Construction (4/24)

Construction of new roads or improvements of existing roads shall be done in such a way as to minimize the environmental and visual impacts. Merchantable trees shall be cut and utilized unless otherwise directed. Non-merchantable trees shall be severed and laid flat on the ground. Slash shall be scattered, and not left in windrows and kept a minimum of 10 feet back from the road edge. Stumps shall be set upright, not left on edge, and be moved at least 10 feet away from the road edge. Disturbed soil shall be feathered into the woods and not left in berms or windrows.

4.1.7 - Road Closure (10/11)

All new roads built into the sale must be blocked to vehicle traffic upon completion of the sale. Overgrown roads that are reopened shall be considered new roads. In general, this will require constructing a four (4') foot high berm of stumps and logs covered with earth. Contact the sale administrator for specific details of design and placement.

4.4 - Access

4.4.1 - Private property access (3/11)

Permission for access across private land is the responsibility of the Purchaser. Should the Purchaser desire to cross private land, a copy of the written permission from the private land-owner may be required by the DNR.

5 - Operations

5.1 - Notification

5.1.1 - Pre-sale Conference (10/25)

A pre-sale conference on site between the Purchaser and Sale Administrator is required prior to beginning any operations. The Unit Manager or his/her representative must be contacted at least 5 days in advance to schedule the conference.

5.2 - Conduct of Operations

5.2.1 - Slash

5.2.1.13 - Dispose of Slash as Directed (12/05)

Slash is to be disposed of as directed by the Sale Administrator.

5.2.22 - Operating Caution

5.2.22.1 - Operating Caution (6/11)

It is recommended, but not required, that within Payment Unit(s) 1, cutting, skidding, and hauling occur during dry summer or frozen winter conditions. The reason for the recommendation is because areas of seasonably wet ground can be found within and along access to sale area.

5.2.32 - Decking/Landing Restoration (9/13)

All decking and landing areas must have the surface area restored to a condition equal to or better than before. This is to ensure the proper regeneration of the stand. Wood debris, chips and "cookies" from trimmings must be removed or scattered away from landing and loading areas and may not be windrowed on the edge.

5.2.38 - No Decking Against Live Trees (2/04)

Cut products may not be decked against unmarked or designated leave trees.

5.4 - Soil Protection

5.4.1 - Rutting Restriction, General (7/16)

Operations are to cease immediately if equipment and weather conditions result in rutting of roads and/or skid trails which are 12 inches or greater in depth and 50 feet in length. The Unit Manager or his/her representative may restrict hauling and/or skidding if ruts exceed the specified depth. With the Unit Manager or his/her representative's approval, the Purchaser may return to the area when the risk of rutting has decreased.

5.4.4 - Slope Protection (9/19)

Skid trails and roads on slopes shall be water barred with slash, stumps, and/or clean straw bales native to the area as soon as use is complete to prevent erosion.

6 - Safety and Fire Prevention

6.2 - Signing

6.2.1 - Road Posting (10/20)

The Purchaser is responsible for posting and maintaining caution signs on Railcar Rd prior to beginning operations. The road must be posted at the intersection of Railcar Rd and County Rd NM to warn of logging activity and truck traffic. Signs must be removed when harvest operations are suspended or completed. The Purchaser will provide these signs.



TIMBER SALE MAP

This information provided by authority of Part 525, 1994 PA 451, as amended.

Sale Number

32-026-25

Date

09/09/2025

Forest Management Unit

Gwinn Mgt Unit

County

Marquette

Mapped By: Siler

Cruised By: Siler & Gould

Scale

1:10,000

Page

1

Of

1

Township
46N

Range
25W

Section(s) and
Subdivision(s) Sec. 29 SWNW,E1/2SW;

Cover Type

A = Aspen	J = Jack Pine	O = Oak	U = Upland Brush
B = Paper Birch	K = Rock	P = Lowland Poplar	UM = Upland Mix Forest
C = Cedar	L = Lowland Brush	Q = Mixed Swamp Conifer	V = Bog or Marsh
D = Treed Bog	LM = Lowland Mix Forest	R = Red Pine	W = White Pine
E = Swamp Hardwoods	M = Maple, Beech, Birch	S = Black Spruce	X = Non Stocked
F = Spruce/Fir	MC = Mixed Conifer	T = Tamarack	Y = Sand
G = Grass	MD = Mixed Deciduous	Z = Water	
H = Hemlock	N = Marsh		

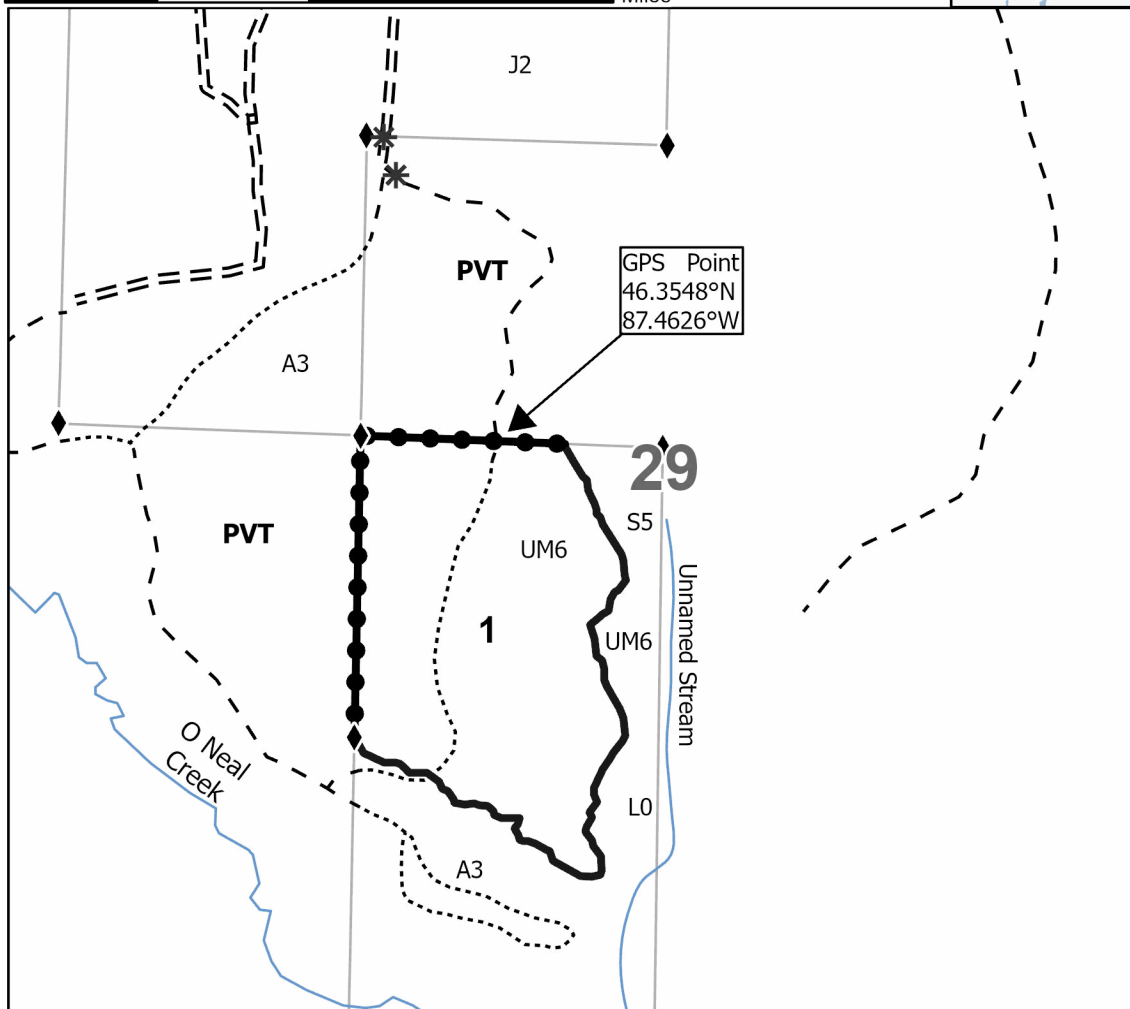
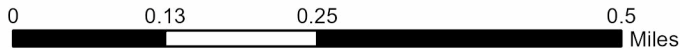
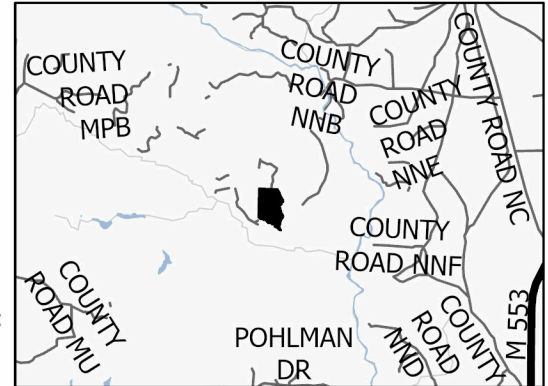
Density

0 = Non Stocked	5 = Pole Timber Medium
1 = Seedling Sapling Poor	6 = Pole Timber Well
2 = Seedling Sapling Medium	7 = Saw Timber Poor
3 = Seedling Sapling Well	8 = Saw Timber Medium
4 = Pole Timber Poor	9 = Saw Timber Well

Payment Unit Number	Acres
1	39.4

Hummingbird Hideaway
Compartment 32279
39.4 Acres

Locator Map 1:100,000



Legend

- Against State (Red)
- Private Line (Blue)
- State Boundary
- Forest Access Route
- Administrative Access Only
- Private Gravel/Dirt
- Stream/River
- Survey Grade Corner
- Gate



Dinotopia (32-016-25)

T45N, R22W, SEC. 15; T45N, R22W, SEC. 16; T45N, R22W, SEC. 4; T45N, R22W,

In response to the notice of sale to be held 2:00 p.m. (local time) on April 27, 2026, I am hereby submitting my sealed bid (firm offer) for the following forest products to be cut. Bids for individual species must be at or above the advertised price. All non-responsive bid forms may be rejected.

<u>PRODUCTS & SPECIES</u>	<u>ESTIMATED VOLUME*</u>	<u>ADVERTISED PRICE</u>	<u>BID PRICE/UNIT</u>
Sawtimber			
Basswood	5.0 MBF	\$ 60.00/MBF	\$ _____
Beech	4.5 MBF	\$ 127.00/MBF	\$ _____
Black Cherry	1.7 MBF	\$ 78.00/MBF	\$ _____
Red Maple	80.7 MBF	\$ 122.00/MBF	\$ _____
Sugar Maple	197.5 MBF	\$ 222.00/MBF	\$ _____
Yellow Birch	3.2 MBF	\$ 27.00/MBF	\$ _____
Pulpwood			
Balsam Fir	91 Cords	\$ 11.10/Cord	\$ _____
Balsam Poplar	8 Cords	\$ 21.55/Cord	\$ _____
Mixed Hardwood	209 Cords	\$ 13.40/Cord	\$ _____
Quaking Aspen	22 Cords	\$ 21.55/Cord	\$ _____
Red Maple	680 Cords	\$ 13.40/Cord	\$ _____
Sugar Maple	1,288 Cords	\$ 13.40/Cord	\$ _____
White Spruce	112 Cords	\$ 11.85/Cord	\$ _____

*The volumes are statistically estimated within plus (+) or minus (-) 8.77 percent at 95% confidence level. These estimated volumes are final and not subject to adjustment. Prospective bidders are urged to examine this timber and to make their own estimates of quantity and quality.

I understand that any or all bids may be rejected. All bids must be signed and all bid items must be bid or the bid form may be rejected. I also understand that consideration and awarding a contract will be based upon my past performance and ability to complete the contract based upon equipment and staffing subject to my control.

FEDERAL ID: _____ or SOCIAL SECURITY NUMBER: _____

Company or individual bidding: _____

Company representative's name: _____

Address: _____

City: _____ State: _____ Zip: _____

IF AVAILABLE, PLEASE PLACE THE PERSONALIZED LABEL FROM YOUR PROSPECTUS IN THE ABOVE BOX.

Individual or company representative's signature: _____ Date: _____

Phone number : _____ Email (optional): _____

THE WINNING BIDDER MUST COMPLETE THE VERIFICATION OF WORKER'S DISABILITY COMPENSATION ACT COMPLIANCE (ON REVERSE SIDE IF DOUBLE SIDED) WITHIN 21 DAYS OF SALE AWARD DATE



TIMBER SALE VERIFICATION OF WORKER'S DISABILITY COMPENSATION ACT COMPLIANCE

As required by Act 317, P.A. 1969 (Worker's Compensation) and
Part 5 of Act 451 of 1994, as amended.

FOR DEPARTMENT USE ONLY	
Sale Number (XX - XXX - XX - XX)	
Forest Management Unit:	

VERIFICATION OF WORKER'S DISABILITY COMPENSATION ACT COMPLIANCE

- This verification must be completed and submitted within 21 days of contract award and prior to the issuance of the timber sale contract.
- In addition, if boxes 2B or 2C are checked, then Notice of Exclusion or Certificate of Insurance must be submitted within twenty-one (21) days of the contract award and prior to the issuance of the timber sale contract.
- All information must be typed or printed except for written signatures.

Please Check Appropriate Categories:

1. My business is organized as (you **must** check one of the boxes below):
 - A. Sole Proprietorship (individual)
 - B. Partnership
 - C. Corporation
2. You **must** check one of the boxes below:
 - A. I certify my business is a sole proprietorship and it has no employees but the sole proprietor. I am not subject to the Worker's Compensation Laws.
 - B. I certify my business has satisfied its obligation to the Worker's Compensation Act through the use of an approved Notice of Exclusion (BWC-337, Rev. 5/96). I will provide a copy of the Notice of Exclusion within 21 days of the contract award. (For questions or a copy of the BWC-337, please call the Worker's Compensation Bureau at 517-322-1195).
 - C. I certify my business has a Worker's Compensation Policy. I will provide an original Certificate of Insurance within twenty-one (21) days of the contract award.
3. If you have checked item 2(A) or 2(B), you **must** indicate the number of **both** full-time and part-time employees, other than yourself, including family members and active partners (if none, you must enter "0").

_____ Full-time Employees

_____ Part-time Employees

Name of Business		Federal ID (or) Social Security No.	
Address		Telephone ()	
City	State	ZIP	

I hereby certify that the above information is true and correct. I agree to notify the Michigan DNR of any changes that occur in factors affecting my coverage during any of my present and future operations.

Signature of Owner or Authorized Representative

Title

Date

Please complete the "SEALED BID" information on the next page

Hummingbird Hideaway (32-026-25)
T46N, R25W, SEC. 29; Marquette COUNTY

In response to the notice of sale to be held 2:00 p.m. (local time) on April 27, 2026, I am hereby submitting my sealed bid (firm offer) for the following forest products to be cut. Bids for individual species must be at or above the advertised price. All non-responsive bid forms may be rejected.

<u>PRODUCTS & SPECIES</u>	<u>ESTIMATED VOLUME*</u>	<u>ADVERTISED PRICE</u>	<u>BID PRICE/UNIT</u>
Sawtimber			
Paper Birch	2.6 MBF	\$ 84.00/MBF	\$ _____
Red Maple	1.4 MBF	\$ 122.00/MBF	\$ _____
Pulpwood			
Balsam Fir	9 Cords	\$ 11.10/Cord	\$ _____
Jack Pine	7 Cords	\$ 43.90/Cord	\$ _____
Mixed Aspen	502 Cords	\$ 21.55/Cord	\$ _____
Mixed Hardwood	74 Cords	\$ 13.40/Cord	\$ _____
Mixed Spruce	119 Cords	\$ 11.85/Cord	\$ _____
Red Maple	371 Cords	\$ 13.40/Cord	\$ _____

*The volumes are statistically estimated within plus (+) or minus (-) 20.19 percent at 95% confidence level. These estimated volumes are final and not subject to adjustment. Prospective bidders are urged to examine this timber and to make their own estimates of quantity and quality.

I understand that any or all bids may be rejected. All bids must be signed and all bid items must be bid or the bid form may be rejected. I also understand that consideration and awarding a contract will be based upon my past performance and ability to complete the contract based upon equipment and staffing subject to my control.

FEDERAL ID: ____ - ____ - ____ or SOCIAL SECURITY NUMBER: ____ - ____ - ____

Company or individual bidding: _____

Company representative's name: _____

Address: _____

City: _____ State: _____ Zip: _____

IF AVAILABLE, PLEASE PLACE THE PERSONALIZED LABEL FROM YOUR PROSPECTUS IN THE ABOVE BOX.

Individual or company representative's signature: _____ Date: _____

Phone number : _____ Email (optional): _____

THE WINNING BIDDER MUST COMPLETE THE VERIFICATION OF WORKER'S DISABILITY COMPENSATION ACT COMPLIANCE (ON REVERSE SIDE IF DOUBLE SIDED) WITHIN 21 DAYS OF SALE AWARD DATE



FOR DEPARTMENT USE ONLY	
Sale Number (XX - XXX - XX - XX)	
Forest Management Unit:	

TIMBER SALE VERIFICATION OF WORKER'S DISABILITY COMPENSATION ACT COMPLIANCE

As required by Act 317, P.A. 1969 (Worker's Compensation) and
Part 5 of Act 451 of 1994, as amended.

VERIFICATION OF WORKER'S DISABILITY COMPENSATION ACT COMPLIANCE

- This verification must be completed and submitted within 21 days of contract award and prior to the issuance of the timber sale contract.
- In addition, if boxes 2B or 2C are checked, then Notice of Exclusion or Certificate of Insurance must be submitted within twenty-one (21) days of the contract award and prior to the issuance of the timber sale contract.
- All information must be typed or printed except for written signatures.

Please Check Appropriate Categories:

1. My business is organized as (you **must** check one of the boxes below):
 - A. Sole Proprietorship (individual)
 - B. Partnership
 - C. Corporation
2. You **must** check one of the boxes below:
 - A. I certify my business is a sole proprietorship and it has no employees but the sole proprietor. I am not subject to the Worker's Compensation Laws.
 - B. I certify my business has satisfied its obligation to the Worker's Compensation Act through the use of an approved Notice of Exclusion (BWC-337, Rev. 5/96). I will provide a copy of the Notice of Exclusion within 21 days of the contract award. (For questions or a copy of the BWC-337, please call the Worker's Compensation Bureau at 517-322-1195).
 - C. I certify my business has a Worker's Compensation Policy. I will provide an original Certificate of Insurance within twenty-one (21) days of the contract award.
3. If you have checked item 2(A) or 2(B), you **must** indicate the number of **both** full-time and part-time employees, other than yourself, including family members and active partners (if none, you must enter "0").

_____ Full-time Employees

_____ Part-time Employees

Name of Business		Federal ID (or) Social Security No.	
Address		Telephone ()	
City	State	ZIP	

I hereby certify that the above information is true and correct. I agree to notify the Michigan DNR of any changes that occur in factors affecting my coverage during any of my present and future operations.

Signature of Owner or Authorized Representative

Title

Date

Please complete the "SEALED BID" information on the next page