



**DEPARTMENT OF NATURAL RESOURCES  
STATE OF MICHIGAN  
TIMBER SALE PROSPECTUS #7716**

SCHEDULED SALE DATE AND TIME: 2:00 p.m. (local time) on May 18, 2026.

LOCATION: **GWINN MGMT UNIT, 410 WEST M 35, GWINN, MI 49841.**

PROSPECTUS NOTE: The bidder is advised to inspect the sale area and review the location, estimated volumes, operating costs and contract terms of proposed sales. Please be aware that some landowners may request 60 days or more notice for access across their land.

Notice is hereby given that bids will be received by the Unit Manager, GWINN MANAGEMENT UNIT, for certain timber on the following described lands:

Cliff Top Outcrop (32-020-25) / T45N, R25W, SEC. 4 , NWNW.

T45N, R25W, SEC. 5 , SENE, NESW, S1/2SW, NESE.

T45N, R25W, SEC. 8 , SENW, SWNE, SW, NWSE.

T46N, R25W, SEC. 33, SWSW.

Marquette County, Advertised Price \$57,392.40, 144.7 Acres, Aspen, Hardwood.

SALE NOTE: Payment Units 3-7 are restricted to winter harvest due to wet soils.

Access may be through private land.

Hodgepodge (32-021-25) / T45N, R27W, SEC. 30, S1/2NW, N1/2NE, SWNE, N1/2SW.

T45N, R27W, SEC. 30, SWSW, NWSE.

Marquette County, Advertised Price \$120,166.00, 158.1 Acres, Aspen, Jack Pine.

SALE NOTE: This sale has an operation caution spec, 5.2.22.1. See spec 2.2.10 for details on chipping/no chipping of tops and limbs.

## BID INSTRUCTIONS (VER. 10/10/2022):

### 1. Scheduled Bid Location, Date, and Time (2/11)

Bids must be received by the Unit Manager, GWINN OFFICE, 410 WEST M 35, GWINN, MI 49841, no later than 2:00 p.m. (local time) on May 18, 2026. For further information concerning this sale, contact Mike Brodeur at 906-346-9201 extension 103.

### 2. Bidder's Qualifications (10/22)

If all or part of a timber sale was prepared by a private contractor, the contractor and that contractor's company are not permitted to bid on the timber sale. A person must be 18 years of age or older to purchase timber. Permanent employees of the Department of Natural Resources or members of their immediate household may not bid. Former employees, in the permanent or seasonal class, may not bid until 3 months after the last day of active duty. Bids will not be accepted from individuals or companies appearing on the DNR/FRD No-Bid List. This list contains the names of purchasers who previously failed to execute a contract within 21-days or who have a history of poor performance.

### 3. Preparation of Sealed Bids (5/16)

Bid Forms may be completed online thru Michigan DNR Timber Sale Online Bidding (OLB) at [www.michigan.gov/timberbidding](http://www.michigan.gov/timberbidding) or by completing the hardcopy Bid Form found in the Timber Sale Prospectus. Hardcopy Bid Forms shall be manually signed in ink. Registration in OLB is considered your 'signature' for all bids submitted thru that system. Bid prices must be entered for each species and product in the Bid Price column for all material subject to bidding and all fill-in blanks must be completed. If erasures or other changes appear on the hardcopy Bid Form, each erasure or change must be initialed by the person signing the bid.

### 4. Submission of Sealed Bids (5/16)

Bid forms may be obtained from the Unit Manager or thru OLB. Bids may be submitted hardcopy or thru OLB. All hardcopy bids must be submitted on the bid form and in an envelope clearly identified as described in this section. NOTE: Only one bid form per bid envelope. Sealed bids must be submitted to the Unit office designated in the prospectus and must be submitted at or prior to the time established in the prospectus. The envelope should show on the outside (a) the sale name or number and (b) the date and time of bid opening, as shown in the prospectus. Bids received after the time specified in the sale prospectus are late bids and will be rejected.

It is possible for a bidder to submit multiple bids on a single sale. For example, a bid may be submitted hardcopy and a bid may be submitted thru OLB. Or, two bidders from the same company could both submit bids on the same sale. If this were to happen, the State would accept all bids received and award the contract accordingly. All bidding and contractual requirements would apply to all bids received.

### 5. Public Opening of Sealed Bids (7/16)

If conditions permit, the sealed bids will be publicly opened and posted at the time and place set in the prospectus.

If a bidder, present at a bid opening, has submitted bids on more than one sale, that bidder may withdraw their unopened bid envelopes or announce the withdrawal of their online bid after being declared the successful bidder on one sale.

### 6. Award of Contract (1/11)

Award of the contract will be made to the Bidder whose bid, conforming to the prospectus, is most advantageous to the State of Michigan on the basis of total value at rates bid for the estimated quantities. The State reserves the right to reject any bid or waive any minor irregularity in bids received. A written award mailed (or otherwise furnished) to the successful Bidder shall be deemed to result in a binding contract without further action by either party.

### 7. Down Payment (1/11)

The Bidder to whom award is made must make a down payment within 21 days of the sale award. The amount of the down payment will be calculated as shown in the Bond and Payment Schedule of this prospectus. Only cash may be used to meet this requirement.

### 8. Performance Security (1/11)

As guarantee of faithful performance, a cash bond, certificate of deposit, surety bond or irrevocable letter of credit (LOC) is required within 21 days of the sale award. The amount of the performance security is shown in the Bond and

Payment Schedule of this prospectus. If an LOC or surety is used, the coverage must extend for at least 6 months beyond the contract expiration.

#### 9. Worker's Compensation (10/22)

Purchaser shall obtain worker's compensation insurance to cover claims under Michigan's Worker's Disability Compensation Act of 1969 or similar employee benefit act of any other state applicable to an employee. Verification of Worker's Disability Compensation Act Compliance must be completed and submitted within 21 days of contract award and prior to the issuance of the timber sale contract. In addition, if applicable, Notice of Exclusion or Certificate of Insurance must also be submitted.

#### 10. Timber Sale Contract (10/22)

Additional conditions and requirements common to all timber sales are listed on the timber sale contract (R4031) and are available on line at [www.michigan.gov/timber](http://www.michigan.gov/timber). Contact the Unit Manager for additional information or a sample contract. Within 21 days of the date of the award letter, the bidder must sign the contract and provide the required down payment, performance security, and verification of worker's disability compensation. The down payment and performance security shall be in accordance with the provisions of the timber sale contract, in the sums stated in this prospectus. If these actions are not taken, then the Bidder, the Bidder's corporation, and the corporation's principals may not be permitted to bid on State timber sales for a period of 3 months after the first offense, 6 months after the second offense, and 1 year after the third offense. An offense will only be counted against the Bidder for 5 years. In addition, the Bidder certifies that if awarded this contract, the Bidder will complete the timber sale contract in accordance with its terms and any modifications thereof including requirements to purchase, cut, and remove the included timber by the expiration date.

Payment Unit values in the State Forest Timber Sale Contract are calculated based on the advertised value of the Payment Unit as a percentage of the total advertised value of the contract. The advertised value of each Payment Unit is given in the Description of Timber by Payment Unit table on the Timber Sale Information page. For example, if the value of Payment Unit 1 is advertised as \$1,500 and the total Timber Sale value is advertised as \$10,000, the contract price for Payment Unit 1 will be 15% of the total bid price ( $\$1,500/\$10,000 * 100$ ).

#### 11. Disclaimer of Estimates and Bidder's Warranty of Inspection (10/22)

Before submitting this bid, the Bidder is advised and cautioned to inspect the sale area, review the requirements of the sale contract, and take other steps as may be reasonably necessary to ascertain the location, estimated volumes, construction estimates, and operating costs of the proposed sale. Failure to do so will not relieve the Bidder from responsibility for completing the contract.

The Bidder warrants that this bid is submitted solely on the basis of the Bidder's examination and inspection of the quality and quantity of the timber offered for sale and the Bidder's opinion of the value thereof and the costs of recovery. No reliance should be placed on the State of Michigan's estimates of timber quality, quantity or costs of recovery. Bidder further acknowledges that the State of Michigan: (i) expressly disclaims any warranty of fitness of timber for any purpose; (ii) offers this timber as is without any warranty of quality (merchantability) or quantity and (iii) expressly disclaims any warranty as to the quantity or quality of timber sold.

#### 12. Certification and Chain-of-Custody (10/22)

Unless otherwise indicated in the contract under section 7 – Other Conditions of the Sale Specific Conditions & Requirements, the area encompassed by this timber sale is certified to the standards of the Forest Stewardship Council (FSC) - Certificate #SCS-FM/COC-00090N and the Sustainable Forestry Initiative (SFI) - Certificate #NSF-SFIS-5Y031-SF5. Forest products from this sale may be delivered to the mill as "FSC 100% and / or SFI certified" as long as the contractor hauling the forest products is chain-of-custody (COC) certified or covered under a COC certificate from the destination mill. The purchaser is responsible for maintaining COC after leaving the sale area.

#### 13. Good Neighbor Authority (GNA) Requirements (10/22)

If the name of this timber sales contains the acronym GNA, it is authorized by the Good Neighbor Authority (GNA) and covered by various agreements between the U.S. Forest Service and the State. The timber sale occurs on federal land and the following conditions apply:

GNA contracts on US Forest Service land will not be awarded to purchasers on the Federal list of excluded parties. The System for Award Management (SAM) will be checked for active excluded parties prior to award of contract. In

addition, the Bidder to whom award is made must complete an Assurance Regarding Felony Conviction or Tax Delinquent Status for Corporate Applicants (AD-3031).

14. Good Neighbor Authority (GNA) Requirements, con't (10/22)

Bidder certifies, by signing this bid form, that to the best of Bidder's knowledge that the following representations are accurate and complete.

- a. That the Bidder and its principals are not presently debarred, suspended, proposed for debarment, declared ineligible, or voluntary excluded from timber sales (covered transactions) by any Federal department or agency.
- b. That the Bidder and its principals have not within a 3-year period preceding this bid been convicted of or had a civil judgment rendered against them for commission of fraud or a criminal offense in connection with obtaining , attempting to obtain, or performing a public (Federal, State, or local) transaction or contract under a public transaction; violation of Federal or State antitrust statutes or commission of embezzlement, theft, forgery, bribery, falsification or destruction of records, making false statements, or receiving stolen property.
- c. That the Bidder and its principals are not presently indicted for or otherwise criminally or civilly charged by a governmental entity (Federal, State, or local) with commission of any of the offenses enumerated in paragraph b of this certification.
- d. That the Bidder and its principals have not within a 3-year period preceding this bid had one or more public transactions (Federal, State, or local) terminated for breach or default of a timber or forest product contract.

Bidders that cannot certify this requirement, in whole or in part, shall submit an explanation with their bid.

Scott Bowen  
Director

## TIMBER SALE INFORMATION

### Cliff Top Outcrop (32-020-25)

T45N, R25W, SEC. 4; T45N, R25W, SEC. 5; T45N, R25W, SEC. 8; T46N, R25W, SEC. 33.  
Marquette County (Advertised Price \$57,392.40)

SALE NOTE: Payment Units 3-7 are restricted to winter harvest due to wet soils.

Access may be through private land.

A timber sale contract for this lump sum, sealed bid timber sale will be awarded to the responsible bidder offering the highest sealed bid price. All units of volume listed below were estimated using the Inventory Manager computer program and the new Michigan taper model. Bids must be at or above the following advertised price for each product and species:

<u>PRODUCTS &amp; SPECIES</u>	<u>ESTIMATED UNITS*</u>	<u>ADVERTISED PRICE</u>
<b>Sawtimber</b>		
Paper Birch	14.2 MBF	\$ 75.00 / MBF
Red Maple	11.6 MBF	\$ 142.00 / MBF
Sugar Maple	2.3 MBF	\$ 230.00 / MBF
Yellow Birch	0.8 MBF	\$ 33.00 / MBF
<b>Pulpwood</b>		
Balsam Fir	77 Cords	\$ 11.10 / Cord
Jack Pine	53 Cords	\$ 43.85 / Cord
Mixed Aspen	1,093 Cords	\$ 20.85 / Cord
Mixed Hardwood	73 Cords	\$ 13.75 / Cord
Mixed Spruce	182 Cords	\$ 11.60 / Cord
Paper Birch	418 Cords	\$ 14.25 / Cord
Red Maple	820 Cords	\$ 13.75 / Cord
Red Pine	103 Cords	\$ 42.70 / Cord
Tamarack	42 Cords	\$ 14.40 / Cord
White Pine	233 Cords	\$ 12.05 / Cord

\* The total volume is statistically estimated within plus (+) or minus (-) 12.94 percent. There are an estimated 3,160 cords on this timber sale, plus or minus 409 cords at the 95% confidence level. The estimated units are final and not subject to adjustment. Prospective bidders are urged to examine this timber and to make their own estimates of quantity and quality.

### **BOND AND PAYMENT SCHEDULE:**

1. A bond in the amount of \$5,739.00 to insure faithful performance of the conditions of the contract will be deposited by the successful bidder within 21 days of the sale award.
2. Cutting in any sale or unit without the required advance payment would be considered a trespass.
3. Total payment must be paid in advance or according to the following schedule :
  - (a) Ten percent (10%) of the sale value must be paid within 21 days of the sale award.
  - (b) The 10% down payment will be credited towards the first unit cut.
  - (c) Payment for each of the following units must be made before cutting begins in that unit:

PAYMENT UNIT NUMBER	PERCENT OF TOTAL SALE VALUE
01	8.3%
02	4.0%
03	4.2%
04	1.3%
05	0.2%
06	5.5%
07	34.6%
08	18.9%
09	13.3%
10	9.7%

4. If no cutting takes place, the 10% down payment will not be refunded.
5. Operations on the contract issued will terminate on 06/30/2030.

### **SALE STATISTICS**

Volumes were calculated in cubic feet using the Michigan taper model. Cubic foot volume includes all wood inside bark for the product indicated. For display purposes, cubic feet were converted to cords and MBF using a simple conversion factor, e.g. 79 cubic feet per cord and 185 cubic feet per MBF. The cubic foot volumes are precise; the cords and MBF volumes are not. Cubic foot volume cannot be directly converted to cords or boards with precision.

### SALE VOLUMES

The total estimated sale volume may not equal the sum of the species/products due to the nature of statistical calculations associated with double sampling methodology.

VOLUME			STATISTICAL RANGE IN CORDS	
TOTAL CUBIC FEET	TOTAL CORDS	PERCENT ERROR	MINIMUM	MAXIMUM
249,674	3,160	12.94%	2,751	3,570

### VDU VOLUMES

A VDU is a Volume Determination Unit. Volumes and their associated statistics are calculated at the VDU level and summarized to the sale level. There is often a one to one relationship between a VDU and a Payment Unit, but not always, depending on the cruise design. Refer to the VDU TO PAYMENT UNIT table.

VDU	VOLUME			RANGE IN CORDS	
	TOTAL CUBIC FEET	TOTAL CORDS	PERCENT ERROR	MINIMUM	MAXIMUM
2	19,309	244	41.65%	143	346
3	16,117	204	49.21%	104	304
5	92,205	1,167	23.84%	889	1,445
8	2,946	37	101.19%	0	75
12	12,767	162	63.03%	60	263
13	11,346	144	47.66%	75	212
18	454	6	140.09%	0	14
20	8,291	105	50.81%	52	158
21	47,316	599	31.29%	412	786
51	18,435	233	54.70%	106	361
52	20,489	259	40.68%	154	365
<b>TOTAL:</b>	<b>249,674</b>	<b>3,160</b>		<b>1,993</b>	<b>4,331</b>

### VDU TO PAYMENT UNIT

When a VDU is associated with more than one Payment Unit (PU), the VDU volumes are assigned to the PU based on acres of the VDU within the PU.

VDU	VDU ACRES	PU	PU ACRES
<b>TOTAL:</b>			

**DESCRIPTION OF TIMBER BY PAYMENT UNIT (PU)**

PU	MARKET GROUP	PRODUCT	QUANTITY	UNIT	ACRES	ADVERTISE PRICE
1	Jack Pine	Pulpwood	15	Cords	12.1	\$4,749.75
	Mixed Aspen		63	Cords		
	<i>Quaking Aspen</i>		63	<i>Cords</i>		
	Mixed Spruce		4	Cords		
	<i>Black Spruce</i>		4	<i>Cords</i>		
	Red Maple		64	Cords		
	Red Pine		16	Cords		
	White Pine		97	Cords		
2	Balsam Fir	Pulpwood	46	Cords	12.5	\$2,315.45
	Jack Pine		27	Cords		
	Mixed Aspen		12	Cords		
	<i>Quaking Aspen</i>		12	<i>Cords</i>		
	Mixed Spruce		11	Cords		
	<i>White Spruce</i>		11	<i>Cords</i>		
	Red Pine		4	Cords		
	White Pine		6	Cords		
3	Paper Birch	Sawtimber	0.9	MBF	13.3	\$2,399.90
	Mixed Aspen	Pulpwood	22	Cords		
	<i>Quaking Aspen</i>		22	<i>Cords</i>		
	Mixed Spruce		13	Cords		
	<i>Black Spruce</i>		13	<i>Cords</i>		
	Paper Birch		23	Cords		
	Red Maple		63	Cords		
	Red Pine		9	Cords		
White Pine	12		Cords			
4	Paper Birch	Sawtimber	1.0	MBF	2.0	\$745.20
	Red Maple	Pulpwood	1.4	MBF		
	Mixed Aspen		4	Cords		
	<i>Quaking Aspen</i>		4	<i>Cords</i>		
	Paper Birch		6	Cords		
	Red Maple		22	Cords		
5	Balsam Fir		Pulpwood	1	Cords	3.7
	Mixed Aspen	3		Cords		
	<i>Quaking Aspen</i>	3		<i>Cords</i>		
	Red Maple	2		Cords		
6	Balsam Fir	Pulpwood	3	Cords	11.6	\$3,142.60
	Jack Pine		5	Cords		
	Mixed Aspen		53	Cords		
	<i>Quaking Aspen</i>		53	<i>Cords</i>		
	Mixed Hardwood		4	Cords		
	<i>Black Cherry</i>		4	<i>Cords</i>		
	Mixed Spruce		97	Cords		
	<i>Black Spruce</i>		97	<i>Cords</i>		
Tamarack	42	Cords				
7	Paper Birch	Sawtimber	7.2	MBF	39.9	\$19,857.05
	Balsam Fir	Pulpwood	21	Cords		
	Mixed Aspen		490	Cords		
	<i>B. T. Aspen</i>		420	<i>Cords</i>		
	<i>Quaking Aspen</i>		70	<i>Cords</i>		
	Mixed Hardwood		25	Cords		
	<i>Black Cherry</i>		2	<i>Cords</i>		
	<i>Sugar Maple</i>		23	<i>Cords</i>		
	Mixed Spruce		37	Cords		
	<i>Black Spruce</i>		30	<i>Cords</i>		
	<i>White Spruce</i>		7	<i>Cords</i>		

**DESCRIPTION OF TIMBER BY PAYMENT UNIT (PU), CON'T**

PU	MARKET GROUP	PRODUCT	QUANTITY	UNIT	ACRES	ADVERTISE PRICE
7 con't	Paper Birch	Pulpwood	294	Cords		
	Red Maple		284	Cords		
8	Paper Birch	Sawtimber	2.1	MBF	25.8	\$10,844.00
	Red Maple		9.3	MBF		
	Yellow Birch		0.8	MBF		
	Balsam Fir	Pulpwood	3	Cords		
	Mixed Aspen		213	Cords		
	<i>B. T. Aspen</i>		45	<i>Cords</i>		
	<i>Quaking Aspen</i>		168	<i>Cords</i>		
	Mixed Hardwood		3	Cords		
	<i>Yellow Birch</i>		3	<i>Cords</i>		
	Mixed Spruce		19	Cords		
	<i>Black Spruce</i>		19	<i>Cords</i>		
	Paper Birch		77	Cords		
	Red Maple		255	Cords		
	9	Paper Birch	Sawtimber	3.0		
Red Maple		0.9		MBF		
Sugar Maple		2.3		MBF		
Mixed Aspen		Pulpwood	215	Cords		
<i>Quaking Aspen</i>			215	<i>Cords</i>		
Mixed Hardwood			41	Cords		
<i>Sugar Maple</i>			41	<i>Cords</i>		
Paper Birch			18	Cords		
Red Maple			106	Cords		
10	Balsam Fir	Pulpwood	3	Cords	13.3	\$5,595.00
	Jack Pine		6	Cords		
	Mixed Aspen		18	Cords		
	<i>B. T. Aspen</i>		12	<i>Cords</i>		
	<i>Quaking Aspen</i>		6	<i>Cords</i>		
	Mixed Spruce		1	Cords		
	<i>White Spruce</i>		1	<i>Cords</i>		
	Red Maple		24	Cords		
	Red Pine		74	Cords		
	White Pine		118	Cords		
TOTAL:			28.9	MBF		
TOTAL:			3,094	Cords		

# Sale Specific Conditions & Requirements

**Sale Name: Cliff Top Outcrop**

**Sale Number: 32-020-25 Seq#: 1**

## 1 - Sale Area

### 1.2 - Boundaries

#### 1.2.1 - Painted Boundaries (9/19)

The sale boundaries are marked and identified by blue, red, and yellow paint. Exterior sale boundary lines against private property are marked with blue paint. Exterior sale boundary lines against state are marked with red paint. Interior Payment Unit boundaries are marked with yellow paint. The painted boundary line trees are not Included Timber and are to be protected unless marked with orange paint.

## 2 - Timber Specifications

### 2.1 - Included Timber

#### 2.1.1 - Clearcut Unit(s) with Unmerchantable Trees (6/14)

Within Payment Unit(s) 1, cut all trees that are two (2) inches or more at DBH, except do not cut oak, cedar, hemlock, and white and red pine 26" DBH or greater.

Within Payment Unit(s) 3, cut all trees that are two (2) inches or more at DBH and trees marked with orange paint above and below stump height, except do not cut white pine, red pine, cedar, hemlock, oak, and trees greater than 24" DBH.

Within Payment Unit(s) 4, cut all trees that are two (2) inches or more at DBH, except do not cut cedar, hemlock, and white pine.

Within Payment Unit(s) 6, cut all trees that are two (2) inches or more at DBH, except do not cut cedar and white pine.

Within Payment Unit(s) 7, cut all trees that are two (2) inches or more at DBH, except do not cut cedar, hemlock, white pine, and yellow birch.

Within Payment Unit(s) 8, cut all trees that are two (2) inches or more at DBH, except do not cut cedar, hemlock, white pine, and red pine.

Within Payment Unit(s) 9, cut all trees that are two (2) inches or more at DBH, except do not cut cedar, white pine, and red pine.

#### 2.1.3 - Cut Tree Marked Unit(s) (12/08)

Within Payment Unit(s) 2, 5, and 10, all trees are designated for cutting when marked with orange paint above and below stump height, regardless of merchantability. In addition, Within Payment Unit(s) 2, cut all, spruce, fir, and jack pine which meet minimum piece specifications in 2.2 Utilization. Within Payment Unit(s) 10, cut all merchantable maple, spruce, fir, and jack pine which meet minimum piece specifications in 2.2 Utilization. .

## 3 - Payments

### 3.4 - Damaged Timber

#### 3.4.1 - Damaged Timber (12/24)

General Condition and Requirement 3.4 Damaged Timber, defines liquidated damages for undesignated live merchantable trees which are cut or injured. No damage is acceptable to undesignated live merchantable trees. Within the Sale Area, if more than 5% of trees (> 4.5" DBH) within a specified area of the sale are damaged, liquidated damages will be assessed for all trees damaged. Rates will be in accordance with General Condition and Requirement 3.4 Damaged Timber.

## 4 - Transportation

### 4.1 - Construction

#### 4.1.3 - Slash and Earthen Piles (8/04)

Piles or windrows of earth along roads and landings that have been widened or constructed shall be leveled. Slash from road maintenance or construction, including stumps, shall be dispersed throughout the sale.

#### 4.1.4 - Timber Removed for Construction (3/23)

Trees cut or damaged in the process of pre-approved road, landing, or skid trail construction will be decked in an area separate from other Designated Timber and not removed until measured by the Sale Administrator. Payment will be made at contract prices or average prices, if not on the contract.

#### 4.1.6 - Road Construction (4/24)

Construction of new roads or improvements of existing roads shall be done in such a way as to minimize the environmental and visual impacts. Merchantable trees shall be cut and utilized unless otherwise directed. Non-merchantable trees shall be severed and laid flat on the ground. Slash shall be scattered, and not left in windrows and kept a minimum of 10 feet back from the road edge. Stumps shall be set upright, not left on edge, and be moved at least 10 feet away from the road edge. Disturbed soil shall be feathered into the woods and not left in berms or windrows.

#### 4.1.7 - Road Closure (10/11)

All new roads built into the sale must be blocked to vehicle traffic upon completion of the sale. Overgrown roads that are reopened shall be considered new roads. In general, this will require constructing a four (4') foot high berm of stumps and logs covered with earth. Temporary berms may be required if no sale activity occurs for 60 or more consecutive days. Contact the sale administrator for specific details of design and placement.

### 4.2 - Maintenance

#### 4.2.1 - Hauling Restriction (12/08)

Hauling may be restricted on forest roads by the Unit Manager or his/her representative. The restriction may occur during spring breakup or during wet weather conditions.

#### 4.2.2 - Fill Material (4/07)

To maintain roads, fill material may be needed in areas where "holes" exist or may be expected to develop. This fill material should be placed before trucking begins. Contact the sale administrator regarding the availability of onsite sand or gravel from adjacent State-owned lands.

#### 4.2.3 - Road maintenance (8/13)

The following road maintenance may be needed: Within 60 days of completion of hauling, or if no hauling occurs for 60 days, the road may need to be maintained and graded. This includes cleaning of drainage areas, grading, crowning and filling with gravel, if necessary. Damages will be assessed if grading/repair does not occur.

### 4.4 - Access

#### 4.4.1 - Private property access (3/11)

Permission for access across private land is the responsibility of the Purchaser. Should the Purchaser desire to cross private land, a copy of the written permission from the private land-owner may be required by the DNR.

## 5 - Operations

### 5.1 - Notification

#### 5.1.1 - Pre-sale Conference (10/25)

A pre-sale conference on site between the Purchaser and Sale Administrator is required prior to beginning any operations. The Unit Manager or his/her representative must be contacted at least 5 days in advance to schedule the conference.

### 5.2 - Conduct of Operations

#### 5.2.3 - Operating Restrictions

##### 5.2.3.1 - Operating Restrictions (9/11)

Within Payment Unit(s) 3-7, unless changed by written agreement, cutting, skidding, and hauling are limited to the period of 12/1 to 4/1. This restriction is due to wet soils.

##### 5.2.32 - Decking/Landing Restoration (9/13)

All decking and landing areas must have the surface area restored to a condition equal to or better than before. This is to ensure the proper regeneration of the stand. Wood debris, chips and "cookies" from trimmings must be removed or scattered

away from landing and loading areas and may not be windrowed on the edge.

#### 5.2.38 - No Decking Against Live Trees (2/04)

Cut products may not be decked against unmarked or designated leave trees.

### 5.4 - Soil Protection

#### 5.4.1 - Rutting Restriction, General (7/16)

Operations are to cease immediately if equipment and weather conditions result in rutting of roads and/or skid trails which is 12 inches or greater in depth and 50 feet in length. The Unit Manager or his/her representative may restrict hauling and/or skidding if ruts exceed the specified depth. With the Unit Manager or his/her representative's approval, the Purchaser may return to the area when the risk of rutting has decreased.

#### 5.4.2 - Skid Trails (2/04)

Skid trails up and down slopes should be avoided. If, however, this is unavoidable, these trails will be left in a non-erodible condition using water bars, logs, and slash. Placing of slash on these skid trails while logging is ongoing may alleviate need for any further action. At the direction of the Sale Administrator, seed, fertilizer, and mulch may also be required.

## 6 - Safety and Fire Prevention

### 6.2 - Signing

#### 6.2.1 - Road Posting (10/20)

The Purchaser is responsible for posting and maintaining caution signs on River Road and Pohlman Road prior to beginning operations. The road must be posted at appropriate distances from the sale area to warn of logging activity and truck traffic. Signs must be removed when harvest operations are suspended or completed. The Purchaser will provide these signs.



### TIMBER SALE MAP

This information provided by authority of Part 525, 1994 PA 451, as amended.

Sale Number

**32-020-25**

Date

09/08/2025

Forest Management Unit

Gwinn Mgt Unit

County

Marquette

Mapped By: Gould

Cruised By: Siler, Gould

Scale

1:24,000

Page

1

Of

1

Township  
45N / 46N

Range  
25W

Section(s) and  
Subdivision(s)

Sec. 33 SWSW; Sec. 4 NWNW; Sec. 5 SENE, NESW, S1/2SW, NESE; Sec. 8 SENW, SWNE, SW, NWSE;

#### Cover Type

A = Aspen	J = Jack Pine	O = Oak	U = Upland Brush
B = Paper Birch	K = Rock	P = Lowland Poplar	UM = Upland Mix Forest
C = Cedar	L = Lowland Brush	Q = Mixed Swamp Conifer	V = Bog or Marsh
D = Treed Bog	LM = Lowland Mix Forest	R = Red Pine	W = White Pine
E = Swamp Hardwoods	M = Maple, Beech, Birch	S = Black Spruce	X = Non Stocked
F = Spruce/Fir	MC = Mixed Conifer	T = Tamarack	Y = Sand
G = Grass	MD = Mixed Deciduous	Z = Water	
H = Hemlock	N = Marsh		

#### Density

0 = Non Stocked	5 = Pole Timber Medium
1 = Seedling Sapling Poor	6 = Pole Timber Well
2 = Seedling Sapling Medium	7 = Saw Timber Poor
3 = Seedling Sapling Well	8 = Saw Timber Medium
4 = Pole Timber Poor	9 = Saw Timber Well

#### Locator Map 1:100,000



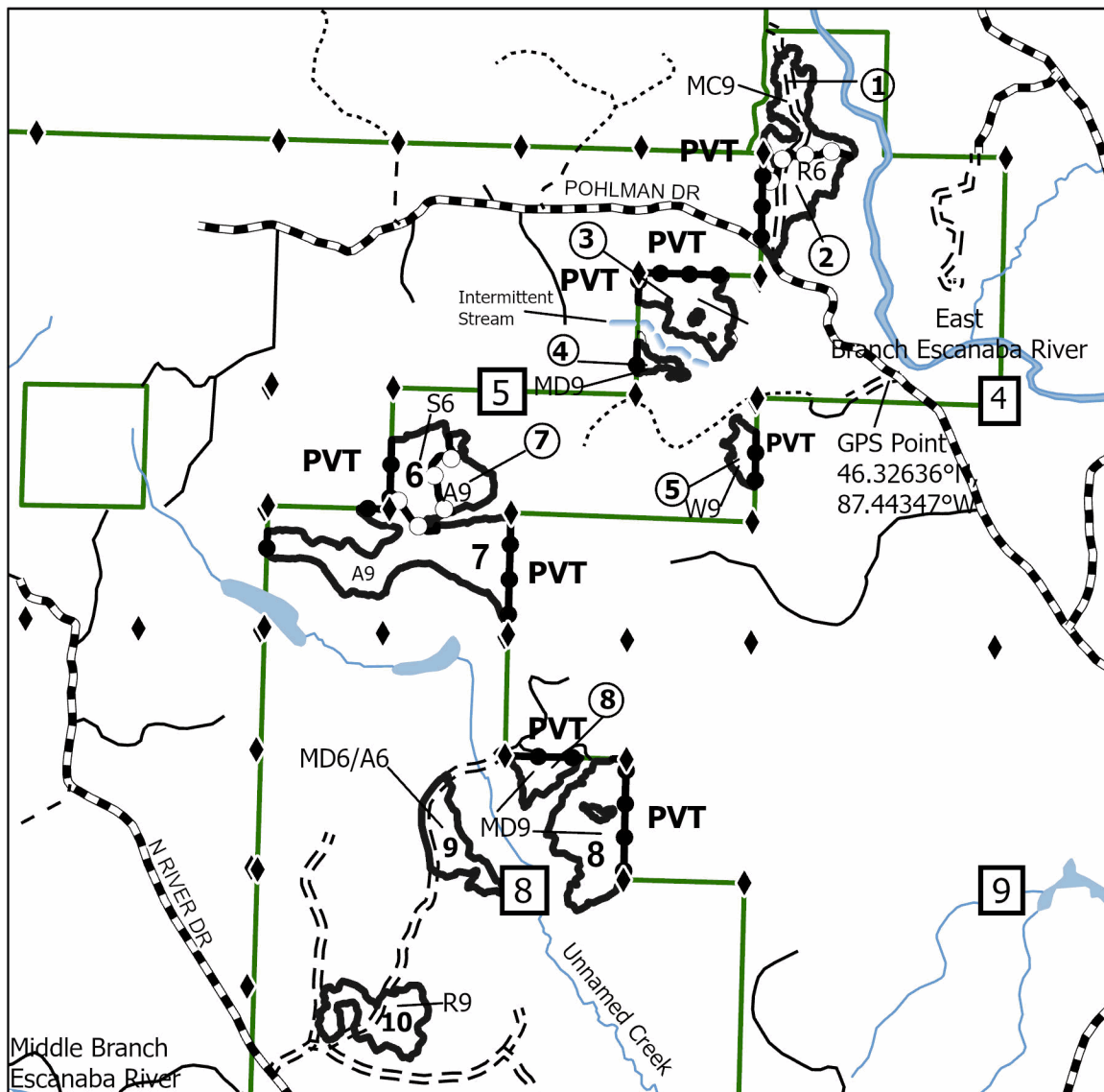
Payment Unit Number	Acres	Payment Unit Number	Acres	Payment Unit Number	Acres
1	12.1	5	3.7	9	10.5
2	12.5	6	11.6	10	13.3
3	13.3	7	39.9		
4	2	8	25.8		

### Cliff Top Outcrop

### Compartment 32030

144.7 Acres

1.5 Miles



#### Legend

- Against State (Red)
  - Private Line (Blue)
  - Payment Unit (Yellow)
- #### Compartments
- State Forests
  - Lakes and Rivers
  - Forest Access Route
  - Administrative Access Only
  - Paved Road
  - Government Gravel/Dirt
  - Private Gravel/Dirt
  - Survey Grade Corner
  - Section Numbers

Use QR Code to open Map in App



## TIMBER SALE INFORMATION

Hodgepodge (32-021-25)

T45N, R27W, SEC. 30.

Marquette County (Advertised Price \$120,166.00)

SALE NOTE: This sale has an operation caution spec, 5.2.22.1. See spec 2.2.10 for details on chipping/no chipping of tops and limbs.

A timber sale contract for this lump sum, sealed bid timber sale will be awarded to the responsible bidder offering the highest sealed bid price. All units of volume listed below were estimated using the Inventory Manager computer program and the new Michigan taper model. Bids must be at or above the following advertised price for each product and species:

<u>PRODUCTS &amp; SPECIES</u>	<u>ESTIMATED UNITS*</u>	<u>ADVERTISED PRICE</u>
Pulpwood		
Balsam Fir	76 Cords	\$ 11.10 / Cord
Jack Pine	1,368 Cords	\$ 43.85 / Cord
Mixed Aspen	1,987 Cords	\$ 20.85 / Cord
Mixed Hardwood	63 Cords	\$ 13.75 / Cord
Mixed Spruce	157 Cords	\$ 11.60 / Cord
Red Maple	251 Cords	\$ 13.75 / Cord
Red Pine	204 Cords	\$ 42.70 / Cord
Tamarack	19 Cords	\$ 14.40 / Cord
White Pine	231 Cords	\$ 12.05 / Cord

\* The total volume is statistically estimated within plus (+) or minus (-) 15.16 percent. There are an estimated 4,353 cords on this timber sale, plus or minus 660 cords at the 95% confidence level. The estimated units are final and not subject to adjustment. Prospective bidders are urged to examine this timber and to make their own estimates of quantity and quality.

### **BOND AND PAYMENT SCHEDULE:**

1. A bond in the amount of \$12,017.00 to insure faithful performance of the conditions of the contract will be deposited by the successful bidder within 21 days of the sale award.
2. Cutting in any sale or unit without the required advance payment would be considered a trespass.
3. Total payment must be paid in advance or according to the following schedule :
  - (a) Ten percent (10%) of the sale value must be paid within 21 days of the sale award.
  - (b) The 10% down payment will be credited towards the first unit cut.
  - (c) Payment for each of the following units must be made before cutting begins in that unit:

PAYMENT UNIT NUMBER	PERCENT OF TOTAL SALE VALUE
01	30.1%
02	28.1%
03	27.6%
04	3.9%
05	10.3%

4. If no cutting takes place, the 10% down payment will not be refunded.
5. Operations on the contract issued will terminate on 06/30/2030.

### **SALE STATISTICS**

Volumes were calculated in cubic feet using the Michigan taper model. Cubic foot volume includes all wood inside bark for the product indicated. For display purposes, cubic feet were converted to cords and MBF using a simple conversion factor, e.g. 79 cubic feet per cord and 185 cubic feet per MBF. The cubic foot volumes are precise; the cords and MBF volumes are not. Cubic foot volume cannot be directly converted to cords or boards with precision.

### **SALE VOLUMES**

The total estimated sale volume may not equal the sum of the species/products due to the nature of statistical calculations associated with double sampling methodology.

VOLUME			STATISTICAL RANGE IN CORDS	
TOTAL CUBIC FEET	TOTAL CORDS	PERCENT ERROR	MINIMUM	MAXIMUM
343,884	4,353	15.16%	3,693	5,013

**VDU VOLUMES**

A VDU is a Volume Determination Unit. Volumes and their associated statistics are calculated at the VDU level and summarized to the sale level. There is often a one to one relationship between a VDU and a Payment Unit, but not always, depending on the cruise design. Refer to the VDU TO PAYMENT UNIT table.

VDU	VOLUME		PERCENT ERROR	RANGE IN CORDS	
	TOTAL CUBIC FEET	TOTAL CORDS		MINIMUM	MAXIMUM
1	190,935	2,417	22.83%	1,865	2,969
2	99,065	1,254	23.07%	965	1,543
3	19,343	245	43.73%	138	352
7	28,864	365	58.21%	153	578
17	5,676	72	69.89%	22	122
<b>TOTAL:</b>	<b>343,884</b>	<b>4,353</b>		<b>3,142</b>	<b>5,564</b>

**VDU TO PAYMENT UNIT**

When a VDU is associated with more than one Payment Unit (PU), the VDU volumes are assigned to the PU based on acres of the VDU within the PU.

VDU	VDU ACRES	PU	PU ACRES
<b>TOTAL:</b>			

**DESCRIPTION OF TIMBER BY PAYMENT UNIT (PU)**

PU	MARKET GROUP	PRODUCT	QUANTITY	UNIT	ACRES	ADVERTISE PRICE				
1	Balsam Fir	Pulpwood	18	Cords	45.3	\$36,147.85				
	Jack Pine		417	Cords						
	Mixed Aspen		612	Cords						
	<i>B. T. Aspen</i>		411	<i>Cords</i>						
	<i>Quaking Aspen</i>		201	<i>Cords</i>						
	Mixed Hardwood		17	Cords						
	<i>Black Cherry</i>		4	<i>Cords</i>						
	<i>Paper Birch</i>		13	<i>Cords</i>						
	Mixed Spruce		3	Cords						
	<i>Black Spruce</i>		2	<i>Cords</i>						
	<i>White Spruce</i>		1	<i>Cords</i>						
	Red Maple		84	Cords						
	Red Pine		62	Cords						
	White Pine		69	Cords						
2	Balsam Fir	Pulpwood	13	Cords	40.5	\$33,730.05				
	Jack Pine		474	Cords						
	Mixed Aspen		428	Cords						
	<i>B. T. Aspen</i>		294	<i>Cords</i>						
	<i>Quaking Aspen</i>		134	<i>Cords</i>						
	Mixed Hardwood		13	Cords						
	<i>Black Cherry</i>		5	<i>Cords</i>						
	<i>Paper Birch</i>		8	<i>Cords</i>						
	Mixed Spruce		2	Cords						
	<i>Black Spruce</i>		2	<i>Cords</i>						
	Red Maple		74	Cords						
	Red Pine		47	Cords						
	White Pine		54	Cords						
	3		Balsam Fir	Pulpwood			22	Cords	43.7	\$33,191.20
Jack Pine		279	Cords							
Mixed Aspen		737	Cords							
<i>B. T. Aspen</i>		487	<i>Cords</i>							
<i>Quaking Aspen</i>		250	<i>Cords</i>							
Mixed Hardwood		21	Cords							
<i>Black Cherry</i>		3	<i>Cords</i>							
<i>Paper Birch</i>		18	<i>Cords</i>							
Mixed Spruce		1	Cords							
<i>White Spruce</i>		1	<i>Cords</i>							
Red Maple		83	Cords							
Red Pine		70	Cords							
White Pine		76	Cords							
4		Balsam Fir	Pulpwood		11	Cords	9.1	\$4,666.15		
	Jack Pine	51		Cords						
	Mixed Aspen	18		Cords						
	<i>B. T. Aspen</i>	1		<i>Cords</i>						
	<i>Quaking Aspen</i>	17		<i>Cords</i>						
	Mixed Spruce	143		Cords						
	<i>Black Spruce</i>	143		<i>Cords</i>						
	Tamarack	19		Cords						
	5	Balsam Fir		Pulpwood	12	Cords			19.5	\$12,430.75
		Jack Pine			147	Cords				
Mixed Aspen		192	Cords							
<i>B. T. Aspen</i>		157	<i>Cords</i>							
<i>Quaking Aspen</i>		35	<i>Cords</i>							
Mixed Hardwood		12	Cords							
<i>Paper Birch</i>		12	<i>Cords</i>							
Mixed Spruce		8	Cords							

**DESCRIPTION OF TIMBER BY PAYMENT UNIT (PU), CON'T**

PU	MARKET GROUP	PRODUCT	QUANTITY	UNIT	ACRES	ADVERTISE PRICE
5 con't	<i>White Spruce</i>	<i>Pulpwood</i>	8	<i>Cords</i>		
	Red Maple		10	Cords		
	Red Pine		25	Cords		
	White Pine		32	Cords		
TOTAL:			4,356	Cords		

# Sale Specific Conditions & Requirements

**Sale Name: Hodgepodge**

**Sale Number: 32-021-25 Seq#: 1**

## 1 - Sale Area

### 1.2 - Boundaries

#### 1.2.1 - Painted Boundaries (9/19)

The sale boundary and Payment Unit boundaries are marked and identified by red and yellow paint. Exterior sale boundary lines against state are marked with red paint. Interior Payment Unit boundaries are marked with yellow paint. The painted boundary line trees are not Included Timber and are to be protected. Yellow painted trees designating an interior Payment Unit boundary are only to be cut when all surrounding Payment Units have been paid.

## 2 - Timber Specifications

### 2.1 - Included Timber

#### 2.1.1 - Clearcut Unit(s) with Unmerchantable Trees (6/14)

Within Payment Unit(s) 1-5, cut all trees that are two (2) inches or more at DBH, except do not cut oak and cedar.

### 2.2 - Utilization

#### 2.2.3 - Stump Heights (12/24)

Stump heights within Payment Unit(s) 1-3 & 5 shall not exceed 6 inches for all trees. This is in order to facilitate planting operations.

## 3 - Payments

### 3.4 - Damaged Timber

#### 3.4.3 - Special Protection Areas (8/11)

The Purchaser shall protect special protection areas from damage by the Purchaser's operations. Special protection areas are excluded from the sale with red paint. The Purchaser shall not cut live or dead trees within special protection areas. If the Purchaser's operations have cut or damaged special protection areas through carelessness, the Purchaser shall pay triple stumpage as fixed, agreed and liquidated damages for each acre or part thereof cut or damaged. Such payment does not constitute ownership of the undesignated timber.

## 4 - Transportation

### 4.1 - Construction

#### 4.1.3 - Slash and Earthen Piles (8/04)

Piles or windrows of earth along roads and landings that have been widened or constructed shall be leveled. Slash from road maintenance or construction, including stumps, shall be dispersed throughout the sale.

#### 4.1.4 - Timber Removed for Construction (3/23)

Trees cut or damaged in the process of pre-approved road, landing, or skid trail construction will be decked in an area separate from other Designated Timber and not removed until measured by the Sale Administrator. Payment will be made at contract prices or average prices, if not on the contract.

#### 4.1.6 - Road Construction (4/24)

Construction of new roads or improvements of existing roads shall be done in such a way as to minimize the environmental and visual impacts. Merchantable trees shall be cut and utilized unless otherwise directed. Non-merchantable trees shall be severed and laid flat on the ground. Slash shall be scattered, and not left in windrows and kept a minimum of 10 feet back from the road edge. Stumps shall be set upright, not left on edge, and be moved at least 10 feet away from the road edge. Disturbed soil shall be feathered into the woods and not left in berms or windrows.

#### 4.1.7 - Road Closure (10/11)

All new roads built into the sale must be blocked to vehicle traffic upon completion of the sale. Overgrown roads that are reopened shall be considered new roads. In general, this will require constructing a four (4') foot high berm of stumps and logs covered with earth. Temporary berms may be required if no sale activity occurs for 30 or more consecutive days.

Contact the Sale Administrator for specific details of design and placement.

#### 4.2 - Maintenance

##### 4.2.1 - Hauling Restriction (12/08)

Hauling may be restricted on forest roads by the Unit Manager or his/her representative. The restriction may occur during wet weather conditions.

##### 4.2.2 - Fill Material (4/07)

To maintain roads, fill material may be needed in areas where "holes" exist or may be expected to develop. This fill material should be placed before trucking begins. Contact the Sale Administrator regarding the availability of onsite sand or gravel from adjacent State-owned lands.

##### 4.2.3 - Road maintenance (8/13)

The following road maintenance may be needed: Within 60 days of completion of hauling, or if no hauling occurs for 60 days, the road may need to be maintained and graded. This includes cleaning of drainage areas, grading, crowning and filling with gravel, if necessary. Damages will be assessed if grading/repair does not occur.

#### 4.4 - Access

##### 4.4.1 - Private property access (3/11)

Permission for access across private land is the responsibility of the Purchaser. Should the Purchaser desire to cross private land, a copy of the written permission from the private landowner may be required by the DNR.

### 5 - Operations

#### 5.1 - Notification

##### 5.1.1 - Pre-sale Conference (10/25)

A pre-sale conference between the Purchaser and Sale Administrator is required prior to beginning any operations. The Unit Manager or his/her representative must be contacted at least 5 days in advance to schedule the conference.

#### 5.2 - Conduct of Operations

##### 5.2.1 - Slash

###### 5.2.1.11 - Slash for Reforestation (3/21)

To facilitate reforestation, the Sale Area shall be left with slash evenly distributed. Bunched tops within the cutting area shall be broken up and scattered. Stumps shall be cut low to the ground. (Sale condition 2.2.3). Processing sites shall not be left with a compacted layer of slash; tops from these sites shall be hauled back into the cut area and scattered. Slash shall not exceed a height of 24 inches.

##### 5.2.22 - Operating Caution

###### 5.2.22.1 - Operating Caution (6/11)

It is recommended, but not required, that within Payment Unit(s) 4, cutting and skidding occur during dry summer or frozen winter conditions. The reason for the recommendation is because of wet ground conditions.

##### 5.2.32 - Decking/Landing Restoration (9/13)

All decking and landing areas must have the surface area restored to a condition equal to or better than before. This is to ensure the proper regeneration of the stand. Wood debris, chips and "cookies" from trimmings must be removed or scattered away from landing and loading areas and may not be windrowed on the edge.

##### 5.2.38 - No Decking Against Live Trees (2/04)

Cut products may not be decked against unmarked or designated leave trees.

#### 5.4 - Soil Protection

##### 5.4.1 - Rutting Restriction, General (7/16)

Operations are to cease immediately if equipment and weather conditions result in rutting of roads and/or skid trails which is 12 inches or greater in depth and 50 feet in length. The Unit Manager or his/her representative may restrict hauling and/or skidding if ruts exceed the specified depth. With the Unit Manager or his/her representative's approval, the Purchaser may

return to the area when the risk of rutting has decreased.

#### 5.4.2 - Skid Trails (2/04)

Skid trails up and down slopes should be avoided. If, however, this is unavoidable, these trails will be left in a non-erodible condition using water bars, logs, and slash. Placing of slash on these skid trails while logging is ongoing may alleviate need for any further action. At the direction of the Sale Administrator, seed, fertilizer, and mulch may also be required.

### **6 - Safety and Fire Prevention**

#### 6.2 - Signing

##### 6.2.1 - Road Posting (10/20)

The Purchaser is responsible for posting and maintaining caution signs on Bryan Creek Rd prior to beginning operations. The road must be posted at appropriate distances from the sale area to warn of logging activity and truck traffic. Signs must be removed when harvest operations are suspended or completed. The Purchaser will provide these signs.

### **99 - Unique**

#### SKIP

##### 99.1 - Unique Sale Condition (5/19)

Within Payment Unit(s) 1-3 & 5, chipping of limbs or tops is only permitted if trees are skid during snow free conditions. This is for the purpose of scarifying soil during snow free conditions.



**TIMBER SALE MAP**

This information provided by authority of Part 525, 1994 PA 451, as amended.

Sale Number

**32-021-25**

Date

09/03/2025

Forest Management Unit

Gwinn Mgt Unit

County

Marquette

Mapped By: Siler

Cruised By: Siler & Gould

Scale

1:15,840

Page

1

Of

1

Township  
45N

Range  
27W

Section(s) and

Subdivision(s) Sec. 30 S1/2NW,N1/2NE,SWNE,N1/2SW; Sec. 30 SWSW,NWSE;

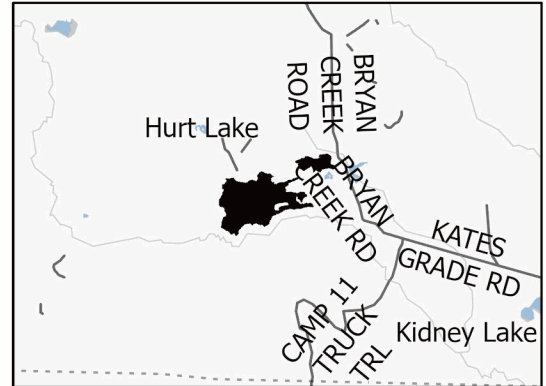
**Cover Type**

A = Aspen	J = Jack Pine	O = Oak	U = Upland Brush
B = Paper Birch	K = Rock	P = Lowland Poplar	UM = Upland Mix Forest
C = Cedar	L = Lowland Brush	Q = Mixed Swamp Conifer	V = Bog or Marsh
D = Treed Bog	LM = Lowland Mix Forest	R = Red Pine	W = White Pine
E = Swamp Hardwoods	M = Maple, Beech, Birch	S = Black Spruce	X = Non Stocked
F = Spruce/Fir	MC = Mixed Conifer	T = Tamarack	Y = Sand
G = Grass	MD = Mixed Deciduous	Z = Water	
H = Hemlock	N = Marsh		

**Density**

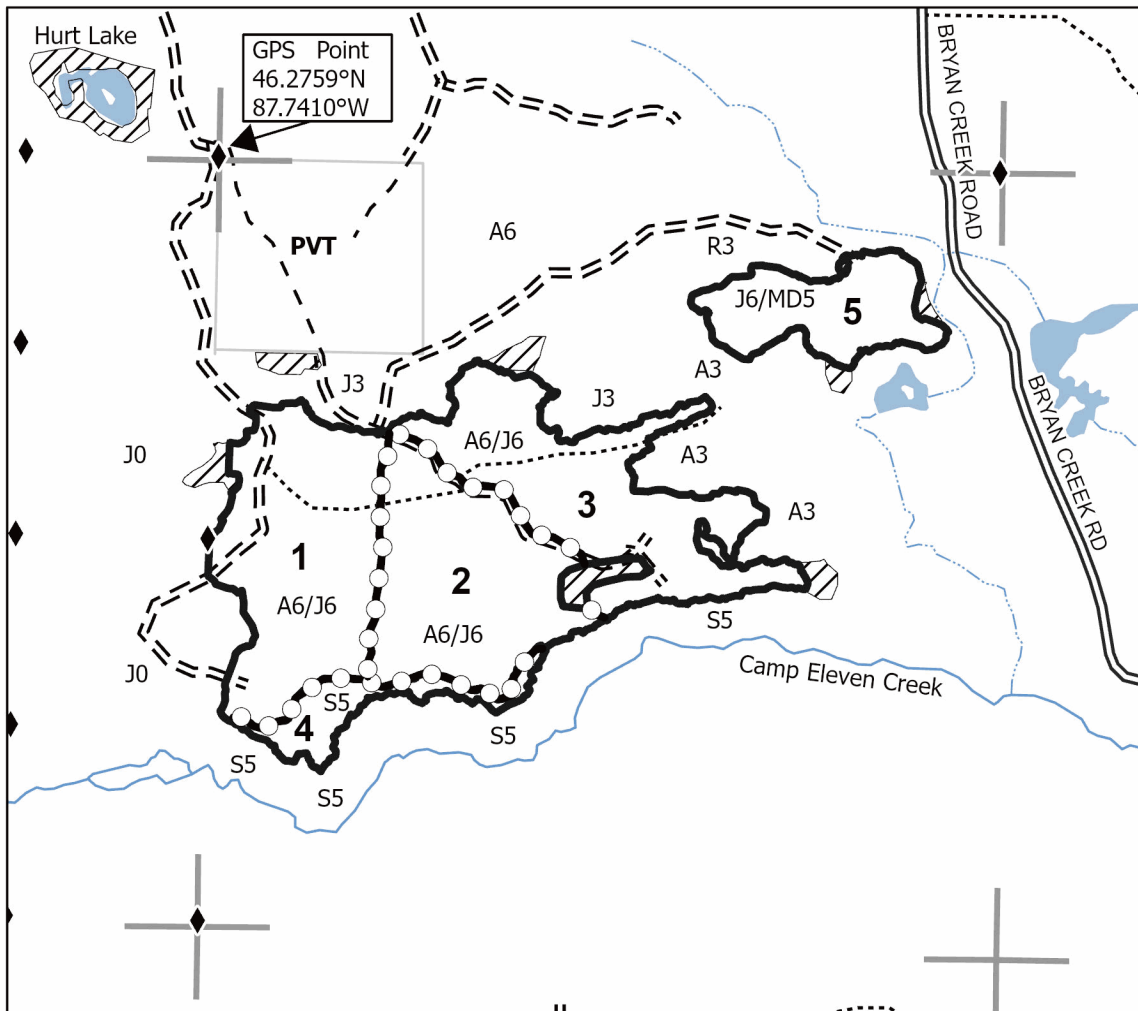
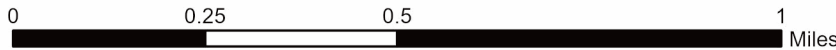
0 = Non Stocked	5 = Pole Timber Medium
1 = Seedling Sapling Poor	6 = Pole Timber Well
2 = Seedling Sapling Medium	7 = Saw Timber Poor
3 = Seedling Sapling Well	8 = Saw Timber Medium
4 = Pole Timber Poor	9 = Saw Timber Well

**Locator Map 1:100,000**



Payment Unit Number	Acres
1	45.2
2	40.5
3	43.8
4	9.1
5	19.5

**Hodgepodge  
Compartment 32269  
158.1 Acres**



**Legend**

- Against State (Red)
- Payment Unit (Yellow)
- State Boundary
- Special Protection Area
- Lakes and Rivers
- Intermittent Stream
- Perennial River
- Primary Forest Road
- Forest Access Route
- Administrative Access Only
- Private Gravel/Dirt
- Survey Grade Corner
- Section Corner



Cliff Top Outcrop (32-020-25)

T45N, R25W, SEC. 4; T45N, R25W, SEC. 5; T45N, R25W, SEC. 8; T46N, R25W,

In response to the notice of sale to be held 2:00 p.m. (local time) on May 18, 2026, I am hereby submitting my sealed bid ( firm offer) for the following forest products to be cut. Bids for individual species must be at or above the advertised price. All non-responsive bid forms may be rejected.

<u>PRODUCTS &amp; SPECIES</u>	<u>ESTIMATED VOLUME*</u>	<u>ADVERTISED PRICE</u>	<u>BID PRICE/UNIT</u>
<b>Sawtimber</b>			
Paper Birch	14.2 MBF	\$ 75.00/MBF	\$ _____
Red Maple	11.6 MBF	\$ 142.00/MBF	\$ _____
Sugar Maple	2.3 MBF	\$ 230.00/MBF	\$ _____
Yellow Birch	0.8 MBF	\$ 33.00/MBF	\$ _____
<b>Pulpwood</b>			
Balsam Fir	77 Cords	\$ 11.10/Cord	\$ _____
Jack Pine	53 Cords	\$ 43.85/Cord	\$ _____
Mixed Aspen	1,093 Cords	\$ 20.85/Cord	\$ _____
Mixed Hardwood	73 Cords	\$ 13.75/Cord	\$ _____
Mixed Spruce	182 Cords	\$ 11.60/Cord	\$ _____
Paper Birch	418 Cords	\$ 14.25/Cord	\$ _____
Red Maple	820 Cords	\$ 13.75/Cord	\$ _____
Red Pine	103 Cords	\$ 42.70/Cord	\$ _____
Tamarack	42 Cords	\$ 14.40/Cord	\$ _____
White Pine	233 Cords	\$ 12.05/Cord	\$ _____

\*The volumes are statistically estimated within plus (+) or minus (-) 12.94 percent at 95% confidence level. These estimated volumes are final and not subject to adjustment. Prospective bidders are urged to examine this timber and to make their own estimates of quantity and quality.

I understand that any or all bids may be rejected. All bids must be signed and all bid items must be bid or the bid form may be rejected. I also understand that consideration and awarding a contract will be based upon my past performance and ability to complete the contract based upon equipment and staffing subject to my control .

FEDERAL ID: \_\_\_\_\_ - \_\_\_\_\_ or SOCIAL SECURITY NUMBER: \_\_\_\_\_ - \_\_\_\_\_ - \_\_\_\_\_

Company or individual bidding: \_\_\_\_\_

Company representative's name: \_\_\_\_\_

Address: \_\_\_\_\_

City: \_\_\_\_\_ State: \_\_\_\_\_ Zip: \_\_\_\_\_

IF AVAILABLE, PLEASE PLACE THE PERSONALIZED LABEL FROM YOUR PROSPECTUS IN THE ABOVE BOX.

Individual or company representative's signature: \_\_\_\_\_ Date: \_\_\_\_\_

Phone number : \_\_\_\_\_ Email (optional): \_\_\_\_\_

**THE WINNING BIDDER MUST COMPLETE THE VERIFICATION OF WORKER'S DISABILITY COMPENSATION ACT COMPLIANCE (ON REVERSE SIDE IF DOUBLE SIDED) WITHIN 21 DAYS OF SALE AWARD DATE**



<b>FOR DEPARTMENT USE ONLY</b>
Sale Number (XX - XXX - XX - XX)
Forest Management Unit:

## TIMBER SALE VERIFICATION OF WORKER'S DISABILITY COMPENSATION ACT COMPLIANCE

*As required by Act 317, P.A. 1969 (Worker's Compensation) and  
Part 5 of Act 451 of 1994, as amended.*

### VERIFICATION OF WORKER'S DISABILITY COMPENSATION ACT COMPLIANCE

- This verification must be completed and submitted within 21 days of contract award and prior to the issuance of the timber sale contract.
- In addition, if boxes 2B or 2C are checked, then Notice of Exclusion or Certificate of Insurance must be submitted within twenty-one (21) days of the contract award and prior to the issuance of the timber sale contract.
- All information must be typed or printed except for written signatures.

Please Check Appropriate Categories:

1. My business is organized as (you **must** check one of the boxes below):
  - A.  Sole Proprietorship (individual)
  - B.  Partnership
  - C.  Corporation
2. You **must** check one of the boxes below:
  - A.  I certify my business is a sole proprietorship and it has no employees but the sole proprietor. I am not subject to the Worker's Compensation Laws.
  - B.  I certify my business has satisfied its obligation to the Worker's Compensation Act through the use of an approved Notice of Exclusion (BWC-337, Rev. 5/96). I will provide a copy of the Notice of Exclusion within 21 days of the contract award. (For questions or a copy of the BWC-337, please call the Worker's Compensation Bureau at 517 -322-1195).
  - C.  I certify my business has a Worker's Compensation Policy. I will provide an original Certificate of Insurance within twenty-one (21) days of the contract award.
3. If you have checked item 2(A) or 2(B), you **must** indicate the number of **both** full-time and part-time employees, other than yourself, including family members and active partners (if none, you must enter "0").

\_\_\_\_\_ Full-time Employees

\_\_\_\_\_ Part-time Employees

Name of Business		Federal ID (or) Social Security No.	
Address		Telephone (       )	
City	State	ZIP	

*I hereby certify that the above information is true and correct. I agree to notify the Michigan DNR of any changes that occur in factors affecting my coverage during any of my present and future operations.*

\_\_\_\_\_  
Signature of Owner or Authorized Representative

\_\_\_\_\_  
Title

\_\_\_\_\_  
Date

**Please complete the "SEALED BID" information on the next page**

Hodgepodge (32-021-25)  
T45N, R27W, SEC. 30; Marquette COUNTY

In response to the notice of sale to be held 2:00 p.m. (local time) on May 18, 2026, I am hereby submitting my sealed bid ( firm offer) for the following forest products to be cut. Bids for individual species must be at or above the advertised price. All non-responsive bid forms may be rejected.

<u>PRODUCTS &amp; SPECIES</u>	<u>ESTIMATED VOLUME*</u>	<u>ADVERTISED PRICE</u>	<u>BID PRICE/UNIT</u>
Pulpwood			
Balsam Fir	76 Cords	\$ 11.10/Cord	\$ _____
Jack Pine	1,368 Cords	\$ 43.85/Cord	\$ _____
Mixed Aspen	1,987 Cords	\$ 20.85/Cord	\$ _____
Mixed Hardwood	63 Cords	\$ 13.75/Cord	\$ _____
Mixed Spruce	157 Cords	\$ 11.60/Cord	\$ _____
Red Maple	251 Cords	\$ 13.75/Cord	\$ _____
Red Pine	204 Cords	\$ 42.70/Cord	\$ _____
Tamarack	19 Cords	\$ 14.40/Cord	\$ _____
White Pine	231 Cords	\$ 12.05/Cord	\$ _____

\*The volumes are statistically estimated within plus (+) or minus (-) 15.16 percent at 95% confidence level. These estimated volumes are final and not subject to adjustment. Prospective bidders are urged to examine this timber and to make their own estimates of quantity and quality.

I understand that any or all bids may be rejected. All bids must be signed and all bid items must be bid or the bid form may be rejected. I also understand that consideration and awarding a contract will be based upon my past performance and ability to complete the contract based upon equipment and staffing subject to my control.

FEDERAL ID: \_\_\_\_ - \_\_\_\_ - \_\_\_\_ or SOCIAL SECURITY NUMBER: \_\_\_\_ - \_\_\_\_ - \_\_\_\_

Company or individual bidding: \_\_\_\_\_

Company representative's name: \_\_\_\_\_

Address: \_\_\_\_\_

City: \_\_\_\_\_ State: \_\_\_\_\_ Zip: \_\_\_\_\_

IF AVAILABLE, PLEASE PLACE THE PERSONALIZED LABEL FROM YOUR PROSPECTUS IN THE ABOVE BOX.

Individual or company representative's signature: \_\_\_\_\_ Date: \_\_\_\_\_

Phone number : \_\_\_\_\_ Email (optional): \_\_\_\_\_

**THE WINNING BIDDER MUST COMPLETE THE VERIFICATION OF WORKER'S DISABILITY COMPENSATION ACT COMPLIANCE (ON REVERSE SIDE IF DOUBLE SIDED) WITHIN 21 DAYS OF SALE AWARD DATE**



<b>FOR DEPARTMENT USE ONLY</b>
Sale Number (XX - XXX - XX - XX)
Forest Management Unit:

## TIMBER SALE VERIFICATION OF WORKER'S DISABILITY COMPENSATION ACT COMPLIANCE

*As required by Act 317, P.A. 1969 (Worker's Compensation) and  
Part 5 of Act 451 of 1994, as amended.*

### VERIFICATION OF WORKER'S DISABILITY COMPENSATION ACT COMPLIANCE

- This verification must be completed and submitted within 21 days of contract award and prior to the issuance of the timber sale contract.
- In addition, if boxes 2B or 2C are checked, then Notice of Exclusion or Certificate of Insurance must be submitted within twenty-one (21) days of the contract award and prior to the issuance of the timber sale contract.
- All information must be typed or printed except for written signatures.

Please Check Appropriate Categories:

1. My business is organized as (you **must** check one of the boxes below):
  - A.  Sole Proprietorship (individual)
  - B.  Partnership
  - C.  Corporation
2. You **must** check one of the boxes below:
  - A.  I certify my business is a sole proprietorship and it has no employees but the sole proprietor. I am not subject to the Worker's Compensation Laws.
  - B.  I certify my business has satisfied its obligation to the Worker's Compensation Act through the use of an approved Notice of Exclusion (BWC-337, Rev. 5/96). I will provide a copy of the Notice of Exclusion within 21 days of the contract award. (For questions or a copy of the BWC-337, please call the Worker's Compensation Bureau at 517 -322-1195).
  - C.  I certify my business has a Worker's Compensation Policy. I will provide an original Certificate of Insurance within twenty-one (21) days of the contract award.
3. If you have checked item 2(A) or 2(B), you **must** indicate the number of **both** full-time and part-time employees, other than yourself, including family members and active partners (if none, you must enter "0").

\_\_\_\_\_ Full-time Employees

\_\_\_\_\_ Part-time Employees

Name of Business		Federal ID (or) Social Security No.	
Address		Telephone (       )	
City	State	ZIP	

*I hereby certify that the above information is true and correct. I agree to notify the Michigan DNR of any changes that occur in factors affecting my coverage during any of my present and future operations.*

\_\_\_\_\_  
Signature of Owner or Authorized Representative

\_\_\_\_\_  
Title

\_\_\_\_\_  
Date

**Please complete the "SEALED BID" information on the next page**