



**DEPARTMENT OF NATURAL RESOURCES
STATE OF MICHIGAN
TIMBER SALE PROSPECTUS #7806**

SCHEDULED SALE DATE AND TIME: 2:00 p.m. (local time) on July 20, 2026.

LOCATION: **GWINN MGMT UNIT, 410 WEST M 35, GWINN, MI 49841.**

PROSPECTUS NOTE: The bidder is advised to inspect the sale area and review the location, estimated volumes, operating costs and contract terms of proposed sales. Please be aware that some landowners may request 60 days or more notice for access across their land.

Notice is hereby given that bids will be received by the Unit Manager, GWINN MANAGEMENT UNIT, for certain timber on the following described lands:

Hiker's Paradise (32-011-26) / T47N, R23W, SEC. 10, E1/2SW,SE.

T47N, R23W, SEC. 12, SESE.

T47N, R23W, SEC. 13, NENE,SESW,NESE,S1/2SE.

T47N, R23W, SEC. 15, NENW,N1/2NE,SENE,SE.

Marquette County, Advertised Price \$63,950.75, 219.7 Acres, Hardwood, Spruce/Fir/Tamarack.

SALE NOTE: Payment Units 1-10, 12, and 13 are restricted to frozen conditions due to wet soils and deer yard, generally 12/1 - 4/15. Payment Units 6 and 11 are restricted during the bark slip period, 4/15 - 7/15.

A recreation site such as a trail, pathway, or campground is within the sale area or the vicinity. Certain restrictions/specifications may be applicable including time restrictions. Access may be through other public land.

The Camp 4 Mystery (32-012-26) / T46N, R23W, SEC. 4 , NWSW,S1/2SW,W1/2SE.

T46N, R23W, SEC. 5 , E1/2NW,W1/2NE,SESE.

Marquette County, Advertised Price \$34,757.80, 99.3 Acres, Hardwood, Spruce/Fir/Tamarack.

SALE NOTE: Payment Units 1, 2, and 4 are restricted to winter harvest due to wet soils.

BID INSTRUCTIONS (VER. 10/10/2022):

1. Scheduled Bid Location, Date, and Time (2/11)

Bids must be received by the Unit Manager, GWINN OFFICE, 410 WEST M 35, GWINN, MI 49841, no later than 2:00 p.m. (local time) on July 20, 2026. For further information concerning this sale, contact Mike Brodeur at 906-346-9201 extension 103.

2. Bidder's Qualifications (10/22)

If all or part of a timber sale was prepared by a private contractor, the contractor and that contractor's company are not permitted to bid on the timber sale. A person must be 18 years of age or older to purchase timber. Permanent employees of the Department of Natural Resources or members of their immediate household may not bid. Former employees, in the permanent or seasonal class, may not bid until 3 months after the last day of active duty. Bids will not be accepted from individuals or companies appearing on the DNR/FRD No-Bid List. This list contains the names of purchasers who previously failed to execute a contract within 21-days or who have a history of poor performance.

3. Preparation of Sealed Bids (5/16)

Bid Forms may be completed online thru Michigan DNR Timber Sale Online Bidding (OLB) at www.michigan.gov/timberbidding or by completing the hardcopy Bid Form found in the Timber Sale Prospectus. Hardcopy Bid Forms shall be manually signed in ink. Registration in OLB is considered your 'signature' for all bids submitted thru that system. Bid prices must be entered for each species and product in the Bid Price column for all material subject to bidding and all fill-in blanks must be completed. If erasures or other changes appear on the hardcopy Bid Form, each erasure or change must be initialed by the person signing the bid.

4. Submission of Sealed Bids (5/16)

Bid forms may be obtained from the Unit Manager or thru OLB. Bids may be submitted hardcopy or thru OLB. All hardcopy bids must be submitted on the bid form and in an envelope clearly identified as described in this section. NOTE: Only one bid form per bid envelope. Sealed bids must be submitted to the Unit office designated in the prospectus and must be submitted at or prior to the time established in the prospectus. The envelope should show on the outside (a) the sale name or number and (b) the date and time of bid opening, as shown in the prospectus. Bids received after the time specified in the sale prospectus are late bids and will be rejected.

It is possible for a bidder to submit multiple bids on a single sale. For example, a bid may be submitted hardcopy and a bid may be submitted thru OLB. Or, two bidders from the same company could both submit bids on the same sale. If this were to happen, the State would accept all bids received and award the contract accordingly. All bidding and contractual requirements would apply to all bids received.

5. Public Opening of Sealed Bids (7/16)

If conditions permit, the sealed bids will be publicly opened and posted at the time and place set in the prospectus.

If a bidder, present at a bid opening, has submitted bids on more than one sale, that bidder may withdraw their unopened bid envelopes or announce the withdrawal of their online bid after being declared the successful bidder on one sale.

6. Award of Contract (1/11)

Award of the contract will be made to the Bidder whose bid, conforming to the prospectus, is most advantageous to the State of Michigan on the basis of total value at rates bid for the estimated quantities. The State reserves the right to reject any bid or waive any minor irregularity in bids received. A written award mailed (or otherwise furnished) to the successful Bidder shall be deemed to result in a binding contract without further action by either party.

7. Down Payment (1/11)

The Bidder to whom award is made must make a down payment within 21 days of the sale award. The amount of the down payment will be calculated as shown in the Bond and Payment Schedule of this prospectus. Only cash may be used to meet this requirement.

8. Performance Security (1/11)

As guarantee of faithful performance, a cash bond, certificate of deposit, surety bond or irrevocable letter of credit (LOC) is required within 21 days of the sale award. The amount of the performance security is shown in the Bond and

Payment Schedule of this prospectus. If an LOC or surety is used, the coverage must extend for at least 6 months beyond the contract expiration.

9. Worker's Compensation (10/22)

Purchaser shall obtain worker's compensation insurance to cover claims under Michigan's Worker's Disability Compensation Act of 1969 or similar employee benefit act of any other state applicable to an employee. Verification of Worker's Disability Compensation Act Compliance must be completed and submitted within 21 days of contract award and prior to the issuance of the timber sale contract. In addition, if applicable, Notice of Exclusion or Certificate of Insurance must also be submitted.

10. Timber Sale Contract (10/22)

Additional conditions and requirements common to all timber sales are listed on the timber sale contract (R4031) and are available on line at www.michigan.gov/timber. Contact the Unit Manager for additional information or a sample contract. Within 21 days of the date of the award letter, the bidder must sign the contract and provide the required down payment, performance security, and verification of worker's disability compensation. The down payment and performance security shall be in accordance with the provisions of the timber sale contract, in the sums stated in this prospectus. If these actions are not taken, then the Bidder, the Bidder's corporation, and the corporation's principals may not be permitted to bid on State timber sales for a period of 3 months after the first offense, 6 months after the second offense, and 1 year after the third offense. An offense will only be counted against the Bidder for 5 years. In addition, the Bidder certifies that if awarded this contract, the Bidder will complete the timber sale contract in accordance with its terms and any modifications thereof including requirements to purchase, cut, and remove the included timber by the expiration date.

Payment Unit values in the State Forest Timber Sale Contract are calculated based on the advertised value of the Payment Unit as a percentage of the total advertised value of the contract. The advertised value of each Payment Unit is given in the Description of Timber by Payment Unit table on the Timber Sale Information page. For example, if the value of Payment Unit 1 is advertised as \$1,500 and the total Timber Sale value is advertised as \$10,000, the contract price for Payment Unit 1 will be 15% of the total bid price ($\$1,500/\$10,000 * 100$).

11. Disclaimer of Estimates and Bidder's Warranty of Inspection (10/22)

Before submitting this bid, the Bidder is advised and cautioned to inspect the sale area, review the requirements of the sale contract, and take other steps as may be reasonably necessary to ascertain the location, estimated volumes, construction estimates, and operating costs of the proposed sale. Failure to do so will not relieve the Bidder from responsibility for completing the contract.

The Bidder warrants that this bid is submitted solely on the basis of the Bidder's examination and inspection of the quality and quantity of the timber offered for sale and the Bidder's opinion of the value thereof and the costs of recovery. No reliance should be placed on the State of Michigan's estimates of timber quality, quantity or costs of recovery. Bidder further acknowledges that the State of Michigan: (i) expressly disclaims any warranty of fitness of timber for any purpose; (ii) offers this timber as is without any warranty of quality (merchantability) or quantity and (iii) expressly disclaims any warranty as to the quantity or quality of timber sold.

12. Certification and Chain-of-Custody (10/22)

Unless otherwise indicated in the contract under section 7 – Other Conditions of the Sale Specific Conditions & Requirements, the area encompassed by this timber sale is certified to the standards of the Forest Stewardship Council (FSC) - Certificate #SCS-FM/COC-00090N and the Sustainable Forestry Initiative (SFI) - Certificate #NSF-SFIS-5Y031-SF5. Forest products from this sale may be delivered to the mill as "FSC 100% and / or SFI certified" as long as the contractor hauling the forest products is chain-of-custody (COC) certified or covered under a COC certificate from the destination mill. The purchaser is responsible for maintaining COC after leaving the sale area.

13. Good Neighbor Authority (GNA) Requirements (10/22)

If the name of this timber sales contains the acronym GNA, it is authorized by the Good Neighbor Authority (GNA) and covered by various agreements between the U.S. Forest Service and the State. The timber sale occurs on federal land and the following conditions apply:

GNA contracts on US Forest Service land will not be awarded to purchasers on the Federal list of excluded parties. The System for Award Management (SAM) will be checked for active excluded parties prior to award of contract. In

addition, the Bidder to whom award is made must complete an Assurance Regarding Felony Conviction or Tax Delinquent Status for Corporate Applicants (AD-3031).

14. Good Neighbor Authority (GNA) Requirements, con't (10/22)

Bidder certifies, by signing this bid form, that to the best of Bidder's knowledge that the following representations are accurate and complete.

- a. That the Bidder and its principals are not presently debarred, suspended, proposed for debarment, declared ineligible, or voluntary excluded from timber sales (covered transactions) by any Federal department or agency.
- b. That the Bidder and its principals have not within a 3-year period preceding this bid been convicted of or had a civil judgment rendered against them for commission of fraud or a criminal offense in connection with obtaining , attempting to obtain, or performing a public (Federal, State, or local) transaction or contract under a public transaction; violation of Federal or State antitrust statutes or commission of embezzlement, theft, forgery, bribery, falsification or destruction of records, making false statements, or receiving stolen property.
- c. That the Bidder and its principals are not presently indicted for or otherwise criminally or civilly charged by a governmental entity (Federal, State, or local) with commission of any of the offenses enumerated in paragraph b of this certification.
- d. That the Bidder and its principals have not within a 3-year period preceding this bid had one or more public transactions (Federal, State, or local) terminated for breach or default of a timber or forest product contract.

Bidders that cannot certify this requirement, in whole or in part, shall submit an explanation with their bid.

Scott Bowen
Director

TIMBER SALE INFORMATION

Hiker's Paradise (32-011-26)

T47N, R23W, SEC. 10; T47N, R23W, SEC. 12; T47N, R23W, SEC. 13; T47N, R23W, SEC. 15.
Marquette County (Advertised Price \$63,950.75)

SALE NOTE: Payment Units 1-10, 12, and 13 are restricted to frozen conditions due to wet soils and deer yard, generally 12/1 - 4/15. Payment Units 6 and 11 are restricted during the bark slip period, 4/15 - 7/15.

A recreation site such as a trail, pathway, or campground is within the sale area or the vicinity. Certain restrictions/specifications may be applicable including time restrictions. Access may be through other public land.

A timber sale contract for this lump sum, sealed bid timber sale will be awarded to the responsible bidder offering the highest sealed bid price. All units of volume listed below were estimated using the Inventory Manager computer program and the new Michigan taper model. Bids must be at or above the following advertised price for each product and species:

<u>PRODUCTS & SPECIES</u>	<u>ESTIMATED UNITS*</u>	<u>ADVERTISED PRICE</u>
Sawtimber		
Paper Birch	5.0 MBF	\$ 72.00 / MBF
Red Maple	34.6 MBF	\$ 152.00 / MBF
Sugar Maple	9.2 MBF	\$ 229.00 / MBF
Pulpwood		
Balsam Fir	362 Cords	\$ 11.85 / Cord
Black Spruce	457 Cords	\$ 13.10 / Cord
Mixed Aspen	220 Cords	\$ 20.10 / Cord
Mixed Hardwood	27 Cords	\$ 14.15 / Cord
Paper Birch	450 Cords	\$ 13.30 / Cord
Red Maple	1,978 Cords	\$ 14.15 / Cord
Sugar Maple	342 Cords	\$ 14.15 / Cord
Tamarack	5 Cords	\$ 13.00 / Cord
White Spruce	173 Cords	\$ 13.10 / Cord

* The total volume is statistically estimated within plus (+) or minus (-) 9.03 percent. There are an estimated 4,131 cords on this timber sale, plus or minus 373 cords at the 95% confidence level. The estimated units are final and not subject to adjustment. Prospective bidders are urged to examine this timber and to make their own estimates of quantity and quality.

BOND AND PAYMENT SCHEDULE:

1. A bond in the amount of \$6,395.00 to insure faithful performance of the conditions of the contract will be deposited by the successful bidder within 21 days of the sale award.
2. Cutting in any sale or unit without the required advance payment would be considered a trespass.
3. Total payment must be paid in advance or according to the following schedule :
 - (a) Ten percent (10%) of the sale value must be paid within 21 days of the sale award.
 - (b) The 10% down payment will be credited towards the first unit cut.
 - (c) Payment for each of the following units must be made before cutting begins in that unit:

PAYMENT UNIT NUMBER	PERCENT OF TOTAL SALE VALUE
01	12.2%
02	14.5%
03	12.8%
04	19.2%
05	2.5%
06	11.8%
07	3.8%
08	5.5%
09	4.6%
10	2.1%
11	0.7%
12	2.7%
13	7.6%

4. If no cutting takes place, the 10% down payment will not be refunded.
5. Operations on the contract issued will terminate on 06/30/2031.

SALE STATISTICS

Volumes were calculated in cubic feet using the Michigan taper model. Cubic foot volume includes all wood inside bark for the product indicated. For display purposes, cubic feet were converted to cords and MBF using a simple conversion factor, e.g. 79 cubic feet per cord and 185 cubic feet per MBF. The cubic foot volumes are precise; the cords and MBF volumes are not. Cubic foot volume cannot be directly converted to cords or boards with precision.

SALE VOLUMES

The total estimated sale volume may not equal the sum of the species/products due to the nature of statistical calculations associated with double sampling methodology.

VOLUME			STATISTICAL RANGE IN CORDS	
TOTAL CUBIC FEET	TOTAL CORDS	PERCENT ERROR	MINIMUM	MAXIMUM
326,361	4,131	9.03%	3,758	4,505

VDU VOLUMES

A VDU is a Volume Determination Unit. Volumes and their associated statistics are calculated at the VDU level and summarized to the sale level. There is often a one to one relationship between a VDU and a Payment Unit, but not always, depending on the cruise design. Refer to the VDU TO PAYMENT UNIT table.

VDU	VOLUME		PERCENT ERROR	RANGE IN CORDS	
	TOTAL CUBIC FEET	TOTAL CORDS		MINIMUM	MAXIMUM
1	62,143	787	24.37%	595	978
16	46,236	585	20.32%	466	704
20	163,582	2,071	13.30%	1,795	2,346
29	8,057	102	62.19%	39	165
30	13,082	166	35.14%	107	224
31	31,620	400	23.77%	305	495
45	1,640	21	74.78%	5	36
TOTAL:	326,361	4,131		3,313	4,950

VDU TO PAYMENT UNIT

When a VDU is associated with more than one Payment Unit (PU), the VDU volumes are assigned to the PU based on acres of the VDU within the PU.

VDU	VDU ACRES	PU	PU ACRES
TOTAL:			

DESCRIPTION OF TIMBER BY PAYMENT UNIT (PU)

PU	MARKET GROUP	PRODUCT	QUANTITY	UNIT	ACRES	ADVERTISE PRICE
1	Balsam Fir Black Spruce Mixed Hardwood <i>Yellow Birch</i> Paper Birch Red Maple Tamarack	Pulpwood	73 272 12 12 29 193 5	Cords Cords Cords Cords Cords Cords Cords	42.4	\$7,779.70
2	Paper Birch Red Maple Balsam Fir Black Spruce Mixed Aspen <i>B. T. Aspen</i> <i>Quaking Aspen</i> Paper Birch Red Maple White Spruce	Sawtimber Pulpwood	1.6 0.9 69 43 51 23 28 128 311 38	MBF MBF Cords Cords Cords Cords Cords Cords Cords Cords	30.1	\$9,258.90
3	Paper Birch Red Maple Balsam Fir Black Spruce Mixed Aspen <i>B. T. Aspen</i> <i>Quaking Aspen</i> Paper Birch Red Maple White Spruce	Sawtimber Pulpwood	1.4 0.8 60 38 45 20 25 113 274 34	MBF MBF Cords Cords Cords Cords Cords Cords Cords Cords	26.5	\$8,161.10
4	Paper Birch Red Maple Balsam Fir Black Spruce Mixed Aspen <i>B. T. Aspen</i> <i>Quaking Aspen</i> Paper Birch Red Maple White Spruce	Sawtimber Pulpwood	2.0 1.2 91 57 70 31 39 169 411 51	MBF MBF Cords Cords Cords Cords Cords Cords Cords Cords	39.9	\$12,289.90
5	Red Maple Balsam Fir Mixed Aspen <i>Quaking Aspen</i> Red Maple Sugar Maple	Sawtimber Pulpwood	0.8 2 10 10 86 2	MBF Cords Cords Cords Cords Cords	4.4	\$1,591.50
6	Red Maple Sugar Maple Balsam Fir Mixed Aspen <i>Quaking Aspen</i> Mixed Hardwood <i>Ironwood</i> Red Maple Sugar Maple White Spruce	Sawtimber Pulpwood	9.1 4.0 1 5 5 2 2 161 190 11	MBF MBF Cords Cords Cords Cords Cords Cords Cords Cords	35.0	\$7,550.60
7	Balsam Fir Black Spruce	Pulpwood	1 23	Cords Cords	12.2	\$2,451.10

DESCRIPTION OF TIMBER BY PAYMENT UNIT (PU), CON'T

PU	MARKET GROUP	PRODUCT	QUANTITY	UNIT	ACRES	ADVERTISE PRICE	
7 con't	Mixed Aspen	Pulpwood	24	Cords			
	<i>Quaking Aspen</i>		24	<i>Cords</i>			
	Red Maple		117	Cords			
8	Red Maple	Sawtimber	5.3	MBF	6.5	\$3,516.60	
	Sugar Maple	Pulpwood	1.1	MBF			
	Balsam Fir		16	Cords			
	Black Spruce		6	Cords			
	Mixed Aspen		4	Cords			
	<i>Quaking Aspen</i>		4	<i>Cords</i>			
	Mixed Hardwood		3	Cords			
	<i>Beech</i>		2	<i>Cords</i>			
	<i>Black Ash</i>		1	<i>Cords</i>			
	Paper Birch		3	Cords			
	Red Maple		101	Cords			
	Sugar Maple		34	Cords			
	White Spruce		9	Cords			
9	Red Maple		Sawtimber	4.5	MBF	5.5	\$2,971.05
	Sugar Maple	Pulpwood	0.9	MBF			
	Balsam Fir		13	Cords			
	Black Spruce		5	Cords			
	Mixed Aspen		3	Cords			
	<i>Quaking Aspen</i>		3	<i>Cords</i>			
	Mixed Hardwood		3	Cords			
	<i>Beech</i>		2	<i>Cords</i>			
	<i>Black Ash</i>		1	<i>Cords</i>			
	Paper Birch		2	Cords			
	Red Maple		86	Cords			
	Sugar Maple		29	Cords			
	White Spruce		8	Cords			
10	Red Maple		Sawtimber	2.0	MBF	2.5	\$1,328.65
	Sugar Maple	Pulpwood	0.4	MBF			
	Balsam Fir		6	Cords			
	Black Spruce		2	Cords			
	Mixed Aspen		1	Cords			
	<i>Quaking Aspen</i>		1	<i>Cords</i>			
	Mixed Hardwood		1	Cords			
	<i>Beech</i>		1	<i>Cords</i>			
	Paper Birch		1	Cords			
	Red Maple		39	Cords			
	Sugar Maple		13	Cords			
	White Spruce		4	Cords			
	11		Sugar Maple	Sawtimber	0.8		
Mixed Hardwood			Pulpwood	2	Cords		
<i>Ironwood</i>		1		<i>Cords</i>			
<i>Yellow Birch</i>		1		<i>Cords</i>			
Red Maple		8		Cords			
Sugar Maple		9		Cords			
12	Red Maple	Sawtimber		2.7	MBF	3.3	\$1,754.35
	Sugar Maple	Pulpwood	0.5	MBF			
	Balsam Fir		8	Cords			
	Black Spruce		3	Cords			
	Mixed Aspen		2	Cords			
	<i>Quaking Aspen</i>		2	<i>Cords</i>			
	Mixed Hardwood		1	Cords			
	<i>Beech</i>		1	<i>Cords</i>			
	Paper Birch		1	Cords			

DESCRIPTION OF TIMBER BY PAYMENT UNIT (PU), CON'T

PU	MARKET GROUP	PRODUCT	QUANTITY	UNIT	ACRES	ADVERTISE PRICE
12 con't	Red Maple	Pulpwood	51	Cords		
	Sugar Maple		17	Cords		
	White Spruce		5	Cords		
13	Red Maple	Sawtimber	7.3	MBF	9.0	\$4,845.25
	Sugar Maple	Pulpwood	1.5	MBF		
	Balsam Fir		22	Cords		
	Black Spruce		8	Cords		
	Mixed Aspen		5	Cords		
	<i>Quaking Aspen</i>		5	<i>Cords</i>		
	Mixed Hardwood		3	Cords		
	<i>Beech</i>		2	<i>Cords</i>		
	<i>Black Ash</i>		1	<i>Cords</i>		
	Paper Birch		4	Cords		
	Red Maple		140	Cords		
	Sugar Maple		48	Cords		
	White Spruce		13	Cords		
	TOTAL:			48.8		
TOTAL:			4,014	Cords		

Sale Specific Conditions & Requirements

Sale Name: Hiker's Paradise

Sale Number: 32-011-26 Seq#: 1

1 - Sale Area

1.2 - Boundaries

1.2.1 - Painted Boundaries (9/19)

The sale boundaries are marked and identified by blue, yellow, and red paint or are unmarked and identified by a road. Exterior sale boundary lines against private property are marked with blue paint. Exterior sale boundary lines against state are marked with red paint, with the exception of Payment Units 8, 10, 11, and 13, boundaries along Magnum and Sand Lake Road are unpainted and designated by Magnum and Sand Lake Roads. Interior Payment Unit boundaries are marked with yellow paint. Retention patches are marked with red paint; no harvesting activities may occur within these areas. The painted boundary line trees are not Included Timber and are to be protected unless marked with orange paint. Yellow painted trees designating an interior Payment Unit boundary are only to be cut when all surrounding Payment Units have been paid.

2 - Timber Specifications

2.1 - Included Timber

2.1.1 - Clearcut Unit(s) with Unmerchantable Trees (6/14)

Within Payment Unit(s) 1-5, 7, 12, and 13, cut all trees that are two (2) inches or more at DBH except:

Within Payment Unit (s) 1, do not cut cedar, hemlock, and white pine.

Within Payment Unit (s) 2-4 and 7, do not cut yellow birch, cedar, hemlock, and white pine.

Within Payment Unit (s) 5, do not cut cedar, hemlock, white pine, and trees marked with green paint above and below stump height.

Within Payment Unit (s) 12 and 13 do not cut cedar, hemlock, and yellow birch.

2.1.2 - Clearcut Unit(s) w/o Unmerchantable Trees (8/11)

Within Payment Unit(s) 8-10, cut all trees which meet minimum piece specifications in 2.2 Utilization, except do not cut hemlock, yellow birch, and white pine. Also, within Payment Unit (s) 10, do not cut trees with green painted rings that are marking the North Country Trail.

2.1.3 - Cut Tree Marked Unit(s) (12/08)

Within Payment Unit(s) 6 and 11, all trees are designated for cutting when marked with orange paint above and below stump height, regardless of merchantability. Also, within Payment Unit (s) 11, do not cut trees with green painted rings that are marking the North Country Trail.

3 - Payments

3.4 - Damaged Timber

3.4.1 - Damaged Timber (12/24)

General Condition and Requirement 3.4 Damaged Timber, defines liquidated damages for undesignated live merchantable trees which are cut or injured. In addition, extreme care should be taken to avoid damage to tree seedlings and saplings.

Within the Sale Area, if more than 25% of the tree seedlings or saplings (1/4" to 4.5" DBH) within a specified portion of the Sale Area are damaged, liquidated damages will be assessed at \$300 per acre for all acreage within that specified portion of the Sale Area that was damaged.

4 - Transportation

4.1 - Construction

4.1.3 - Slash and Earthen Piles (8/04)

Piles or windrows of earth along roads and landings that have been widened or constructed shall be leveled. Slash from road maintenance or construction, including stumps, shall be dispersed throughout the sale.

4.1.4 - Timber Removed for Construction (3/23)

Trees cut or damaged in the process of pre-approved road, landing, or skid trail construction will be decked in an area

separate from other Designated Timber and not removed until measured by the Sale Administrator. Payment will be made at contract prices or average prices, if not on the contract.

4.1.6 - Road Construction (4/24)

Construction of new roads or improvements of existing roads shall be done in such a way as to minimize the environmental and visual impacts. Merchantable trees shall be cut and utilized unless otherwise directed. Non-merchantable trees shall be severed and laid flat on the ground. Slash shall be scattered, and not left in windrows and kept a minimum of 10 feet back from the road edge. Stumps shall be set upright, not left on edge, and be moved at least 10 feet back from the road edge. Disturbed soil shall be feathered into the woods and not left in berms or windrows. All new roads must be approved by the sale administrator.

4.1.7 - Road Closure (10/11)

All new roads built into the sale must be blocked to vehicle traffic upon completion of the sale. Overgrown roads that are reopened shall be considered new roads. Some existing roads may also need to be closed, see the Timber Sale Map for locations. In general, this will require constructing a four (4') foot high berm of stumps and logs covered with earth. Temporary berms may be required if no sale activity occurs for 30 or more consecutive days. Contact the sale administrator for specific details of design and placement.

4.2 - Maintenance

4.2.3 - Road maintenance (8/13)

The following road maintenance may be needed: Within 60 days of completion of hauling, or if no hauling occurs for 60 days, the road may need to be maintained and graded. This includes cleaning of drainage areas, grading, crowning and filling with gravel, if necessary. Damages will be assessed if grading/repair does not occur.

5 - Operations

5.1 - Notification

5.1.1 - Pre-sale Conference (10/25)

A pre-sale conference between the Purchaser and Sale Administrator is required prior to beginning any operations. The Unit Manager or his/her representative must be contacted at least 5 days in advance to schedule the conference.

5.2 - Conduct of Operations

5.2.1 - Slash

5.2.1.11 - Slash for Reforestation (3/21)

To facilitate reforestation, the Sale Area shall be left with slash evenly distributed. Bunched tops within the cutting area shall be broken up and scattered. Stumps shall be cut low to the ground. Processing sites shall not be left with a compacted layer of slash; tops from these sites shall be hauled back into the cut area and scattered.

5.2.3 - Operating Restrictions

5.2.3.1 - Operating Restrictions (9/11)

Within Payment Unit(s) 1-10, 12, and 13, unless changed by written agreement, cutting, skidding, and hauling are limited to frozen conditions, generally the period of 12/1 - 4/15. This restriction is due to wet soils and deer yard.

5.2.3.3 - Bark Slippage Restriction (3/09)

Within Payment Unit(s) 6 and 11, unless changed by written agreement, cutting and skidding are not permitted during the period of April 15 to July 15. This restriction is because of bark slippage.

5.2.32 - Decking/Landing Restoration (9/13)

All decking and landing areas must have the surface area restored to a condition equal to or better than before. This is to ensure the proper regeneration of the stand. Wood debris, chips and "cookies" from trimmings must be removed or scattered away from landing and loading areas and may not be windrowed on the edge.

5.2.38 - No Decking Against Live Trees (2/04)

Cut products may not be decked against unmarked or designated leave trees.

5.2.40 - Pathway Protection (10/10)

The North Country Trail is a hiking trail and is shown on the Timber Sale Map. Do not cut trees with green paint rings or

damage posts marking the trail. Maintain a 20-foot-wide slash, debris, and rut free zone daily, using the pathway as the centerline. Do not run equipment down the pathway. Skidding across the trail may only occur in locations approved by the sale administrator.

5.2.41 - Snowmobile Trail Protection (9/11)

Trail 417 is a snowmobile trail and is shown on the Timber Sale Map. Do not cut or damage posts with orange trail markers or traffic control signs. If the trail is used, it must be maintained and restored to a condition equal to or better than before the sale. If the trail road is to be used for hauling during the snowmobile season, then a snow-covered base must be left on the trail and all trucking of forest products shall only occur Monday through Thursday during daylight hours. Maintain a 20-foot-wide slash, debris, and rut free zone daily using the snowmobile trail as the centerline. No decking of forest products will be permitted along the snowmobile trail. All stumps within 20 feet of the snowmobile trail must be cut at ground level.

5.4 - Soil Protection

5.4.2 - Skid Trails (2/04)

Skid trails up and down slopes should be avoided. If, however, this is unavoidable, these trails will be left in a non-erodible condition using water bars, logs, and slash. Placing of slash on these skid trails while logging is ongoing may alleviate need for any further action. At the direction of the Sale Administrator, seed, fertilizer, and mulch may also be required.

6 - Safety and Fire Prevention

6.2 - Signing

6.2.1 - Road Posting (10/20)

The Purchaser is responsible for posting and maintaining caution signs on Magnum Road, Deerton Sand Lake Road, and M-28 prior to beginning operations. The road must be posted at appropriate distances from the sale area to warn of logging activity and truck traffic. Signs must be removed when harvest operations are suspended or completed. The Purchaser will provide these signs.

6.2.2 - Snowmobile Trail Posting (10/20)

The Purchaser is responsible for posting and maintaining caution signs on Trail 417 prior to beginning operations during the snowmobile season (approximately December 1 to March 31). The trail must be posted at appropriate distances from the Sale Area to warn of logging activity and truck traffic. Signs must be removed when harvest operations are suspended or completed. The Purchaser will provide these signs.

6.2.3 - Recreational Trail Posting (10/20)

The Purchaser is responsible for posting and maintaining caution signs on the North Country Trail prior to beginning operations. The trail must be posted at appropriate distances from the sale area to warn of logging activity and truck traffic at both ends of the trail. Signs must be removed when harvest operations are suspended or completed. The Purchaser will provide these signs.



TIMBER SALE MAP

This information provided by authority of Part 525, 1994 PA 451, as amended.

Sale Number 32-011-26	Date 05/21/2026
Scale 1:24,000	Page 1
	Of 2

Forest Management Unit Gwinn Mgt Unit	County Marquette	Mapped By: Siler Cruised By: Siler & Gould
--	---------------------	---

Township 47N	Range 23W	Section(s) and Subdivision(s) NENW,N1/2NE,SENE,SE; Sec. 10 E1/2SW,SE; Sec. 12 SESE; Sec. 13 NENE,SESW,NESE,S1/2SE; Sec. 15
-----------------	--------------	---

Cover Type			
A = Aspen	J = Jack Pine	O = Oak	U = Upland Brush
B = Paper Birch	K = Rock	P = Lowland Poplar	UM = Upland Mix Forest
C = Cedar	L = Lowland Brush	Q = Mixed Swamp Conifer	V = Bog or Marsh
D = Treed Bog	LM = Lowland Mix Forest	R = Red Pine	W = White Pine
E = Swamp Hardwoods	M = Maple, Beech, Birch	S = Black Spruce	X = Non Stocked
F = Spruce/Fir	MC = Mixed Conifer	T = Tamarack	Y = Sand
G = Grass	MD = Mixed Deciduous	Z = Water	
H = Hemlock	N = Marsh		

Density	
0 = Non Stocked	5 = Pole Timber Medium
1 = Seedling Sapling Poor	6 = Pole Timber Well
2 = Mixedling Sapling Medium	7 = Saw Timber Poor
3 = Seedling Sapling Well	8 = Saw Timber Medium
4 = Pole Timber Poor	9 = Saw Timber Well

Payment Unit Number	Acres	Payment Unit Number	Acres	Payment Unit Number	Acres
1	42.4	6	35	11	2.4
2	30.1	7	12.2	12	3.3
3	26.5	8	6.5	13	9
4	39.9	9	5.5		
5	4.4	10	2.5		

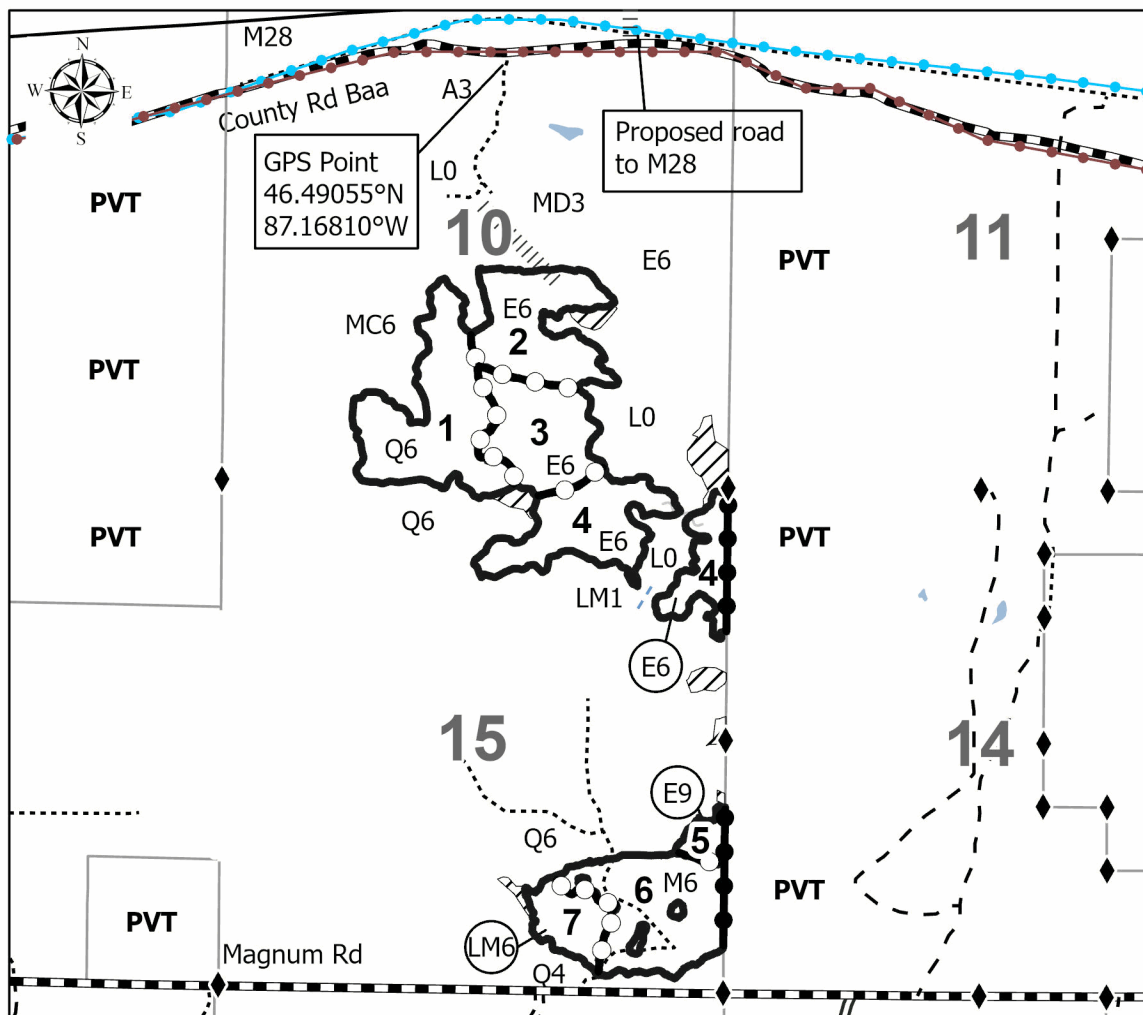
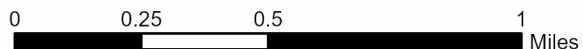
Hiker's Paradise

Compartment

32282

32283

219.7 Acres



Legend

- Against State (Red)
- Private Line (Blue)
- Payment Unit (Yellow)
- State Boundary
- Retention Areas
- Primary Forest Road
- Forest Access Route
- Administrative Access Only
- Paved Road
- Government Gravel/Dirt
- Private Gravel/Dirt
- Proposed Road
- Lakes and Rivers
- Streams
- Survey Grade Corner
- Hiking Trail
- Snowmobile Trail





TIMBER SALE MAP

This information provided by authority of Part 525, 1994 PA 451, as amended.

Sale Number 32-011-26	Date 05/21/2026
Scale 1:15,840	Page 2
	Of 2

Forest Management Unit Gwinn Mgt Unit	County Marquette	Mapped By: Siler
		Cruised By: Siler & Gould

Township 47N	Range 23W	Section(s) and Subdivision(s) NENW,N1/2NE,SENE,SE; Sec. 10 E1/2SW,SE; Sec. 12 SESE; Sec. 13 NENE,SESW,NESE,S1/2SE; Sec. 15
-----------------	--------------	--

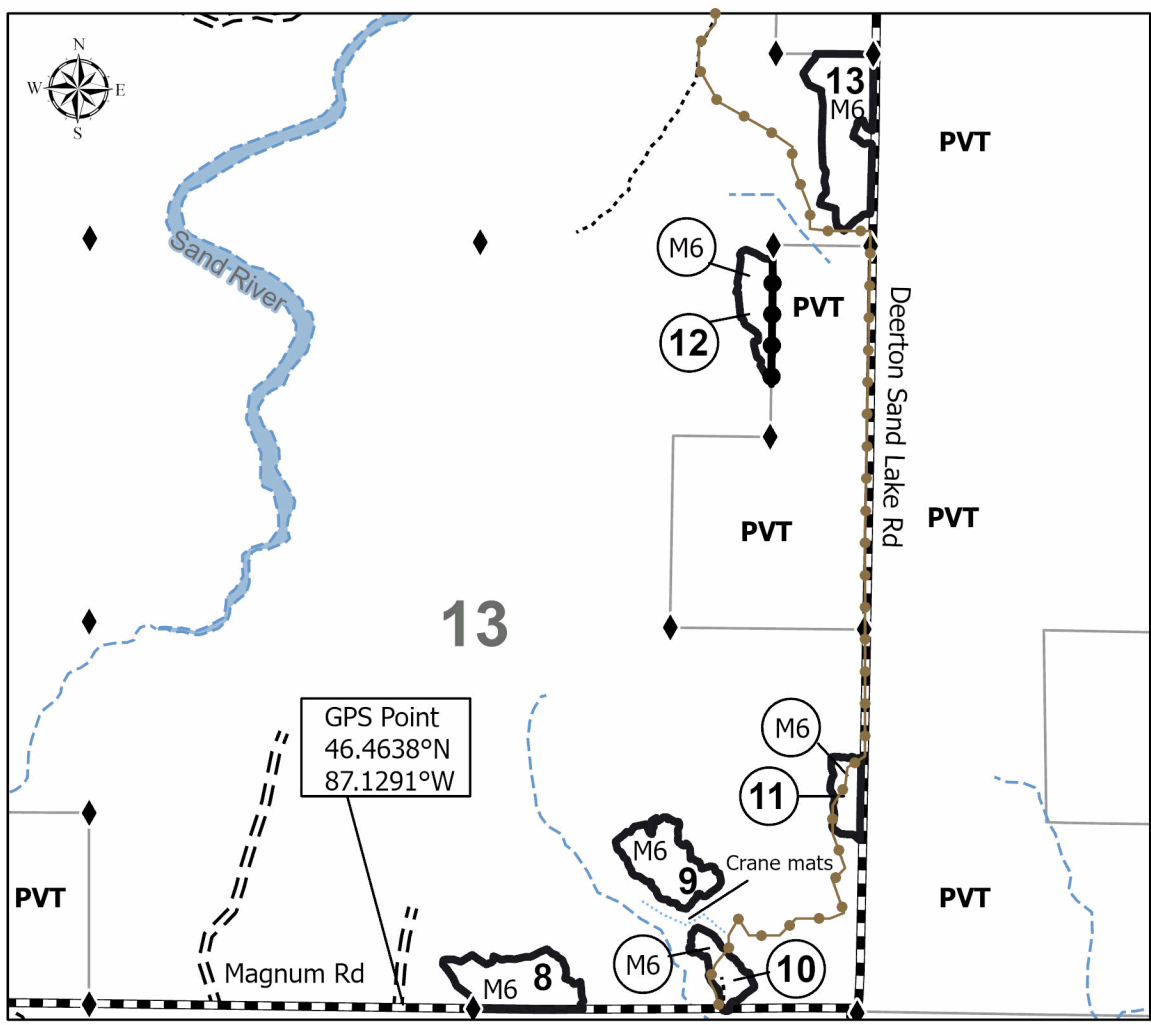
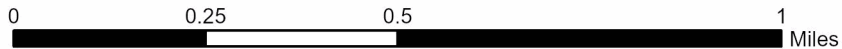
Cover Type			
A = Aspen	J = Jack Pine	O = Oak	U = Upland Brush
B = Paper Birch	K = Rock	P = Lowland Poplar	UM = Upland Mix Forest
C = Cedar	L = Lowland Brush	Q = Mixed Swamp Conifer	V = Bog or Marsh
D = Treed Bog	LM = Lowland Mix Forest	R = Red Pine	W = White Pine
E = Swamp Hardwoods	M = Maple, Beech, Birch	S = Black Spruce	X = Non Stocked
F = Spruce/Fir	MC = Mixed Conifer	T = Tamarack	Y = Sand
G = Grass	MD = Mixed Deciduous	Z = Water	
H = Hemlock	N = Marsh		

Density	
0 = Non Stocked	5 = Pole Timber Medium
1 = Seedling Sapling Poor	6 = Pole Timber Well
2 = Seedling Sapling Medium	7 = Saw Timber Poor
3 = Seedling Sapling Well	8 = Saw Timber Medium
4 = Pole Timber Poor	9 = Saw Timber Well

Payment Unit Number	Acres	Payment Unit Number	Acres	Payment Unit Number	Acres
1	42.4	6	35	11	2.4
2	30.1	7	12.2	12	3.3
3	26.5	8	6.5	13	9
4	39.9	9	5.5		
5	4.4	10	2.5		

Hiker's Paradise

Compartment
32282
32283
219.7 Acres



Legend

- Against State (Red)
- Private Line (Blue)
- State Boundary
- Forest Access Route
- Administrative Access Only
- Government Gravel/Dirt
- Private Gravel/Dirt
- Drain
- Lakes and Rivers
- Streams
- Survey Grade Corner
- Hiking Trail



TIMBER SALE INFORMATION

The Camp 4 Mystery (32-012-26)
 T46N, R23W, SEC. 4; T46N, R23W, SEC. 5.
 Marquette County (Advertised Price \$34,757.80)

SALE NOTE: Payment Units 1, 2, and 4 are restricted to winter harvest due to wet soils.

A timber sale contract for this lump sum, sealed bid timber sale will be awarded to the responsible bidder offering the highest sealed bid price. All units of volume listed below were estimated using the Inventory Manager computer program and the new Michigan taper model. Bids must be at or above the following advertised price for each product and species:

<u>PRODUCTS & SPECIES</u>	<u>ESTIMATED UNITS*</u>	<u>ADVERTISED PRICE</u>
Sawtimber		
Black Cherry	0.8 MBF	\$ 74.00 / MBF
Red Maple	15.9 MBF	\$ 152.00 / MBF
Sugar Maple	0.9 MBF	\$ 229.00 / MBF
Pulpwood		
B. T. Aspen	16 Cords	\$ 20.10 / Cord
Balsam Fir	253 Cords	\$ 11.85 / Cord
Black Spruce	21 Cords	\$ 13.10 / Cord
Misc. Species 2	83 Cords	\$ 1.00 / Cord
Mixed Hardwood	233 Cords	\$ 14.15 / Cord
Quaking Aspen	111 Cords	\$ 20.10 / Cord
Red Maple	1,432 Cords	\$ 14.15 / Cord
White Pine	26 Cords	\$ 12.10 / Cord
White Spruce	175 Cords	\$ 13.10 / Cord

* The total volume is statistically estimated within plus (+) or minus (-) 13.13 percent. There are an estimated 2,389 cords on this timber sale, plus or minus 314 cords at the 95% confidence level. The estimated units are final and not subject to adjustment. Prospective bidders are urged to examine this timber and to make their own estimates of quantity and quality.

BOND AND PAYMENT SCHEDULE:

1. A bond in the amount of \$3,476.00 to insure faithful performance of the conditions of the contract will be deposited by the successful bidder within 21 days of the sale award.
2. Cutting in any sale or unit without the required advance payment would be considered a trespass.
3. Total payment must be paid in advance or according to the following schedule :
 - (a) Ten percent (10%) of the sale value must be paid within 21 days of the sale award.
 - (b) The 10% down payment will be credited towards the first unit cut.
 - (c) Payment for each of the following units must be made before cutting begins in that unit:

PAYMENT UNIT NUMBER	PERCENT OF TOTAL SALE VALUE
01	42.0%
02	9.2%
03	15.1%
04	33.7%
4. If no cutting takes place, the 10% down payment will not be refunded.
5. Operations on the contract issued will terminate on 06/30/2030.

SALE STATISTICS

Volumes were calculated in cubic feet using the Michigan taper model. Cubic foot volume includes all wood inside bark for the product indicated. For display purposes, cubic feet were converted to cords and MBF using a simple conversion factor, e.g. 79 cubic feet per cord and 185 cubic feet per MBF. The cubic foot volumes are precise; the cords and MBF volumes are not. Cubic foot volume cannot be directly converted to cords or boards with precision.

SALE VOLUMES

The total estimated sale volume may not equal the sum of the species/products due to the nature of statistical calculations associated with double sampling methodology.

VOLUME		STATISTICAL RANGE IN CORDS		
TOTAL CUBIC FEET	TOTAL CORDS	PERCENT ERROR	MINIMUM	MAXIMUM
188,757	2,389	13.13%	2,076	2,703

VDU VOLUMES

A VDU is a Volume Determination Unit. Volumes and their associated statistics are calculated at the VDU level and summarized to the sale level. There is often a one to one relationship between a VDU and a Payment Unit, but not always, depending on the cruise design. Refer to the VDU TO PAYMENT UNIT table.

VDU	VOLUME		PERCENT ERROR	RANGE IN CORDS	
	TOTAL CUBIC FEET	TOTAL CORDS		MINIMUM	MAXIMUM
27	86,307	1,092	19.89%	875	1,310
37	16,031	203	34.09%	134	272
39	20,799	263	29.32%	186	340
41	65,621	831	25.17%	622	1,040
TOTAL:	188,757	2,389		1,817	2,962

VDU TO PAYMENT UNIT

When a VDU is associated with more than one Payment Unit (PU), the VDU volumes are assigned to the PU based on acres of the VDU within the PU.

VDU	VDU ACRES	PU	PU ACRES
TOTAL:			

DESCRIPTION OF TIMBER BY PAYMENT UNIT (PU)

PU	MARKET GROUP	PRODUCT	QUANTITY	UNIT	ACRES	ADVERTISE PRICE	
1	Balsam Fir	Pulpwood	102	Cords	41.8	\$14,610.80	
	Black Spruce		21	Cords			
	Misc. Species 2		31	Cords			
	Mixed Hardwood		69	Cords			
	<i>Black Cherry</i>		19	<i>Cords</i>			
	<i>Paper Birch</i>		50	<i>Cords</i>			
	Red Maple		713	Cords			
	White Pine		26	Cords			
	White Spruce		131	Cords			
2	Red Maple	Sawtimber	2.7	MBF	11.7	\$3,186.70	
	Balsam Fir	Pulpwood	23	Cords			
	Mixed Hardwood		5	Cords			
	<i>Sugar Maple</i>		5	<i>Cords</i>			
	Quaking Aspen		7	Cords			
	Red Maple		162	Cords			
3	Black Cherry		Sawtimber	0.8	MBF	17.1	\$5,238.40
	Red Maple	Pulpwood	10.1	MBF			
	Sugar Maple		0.9	MBF			
	B. T. Aspen		16	Cords			
	Balsam Fir		8	Cords			
	Mixed Hardwood		53	Cords			
	<i>Black Cherry</i>		6	<i>Cords</i>			
	<i>Paper Birch</i>		15	<i>Cords</i>			
	<i>Sugar Maple</i>		32	<i>Cords</i>			
	Quaking Aspen		4	Cords			
	Red Maple		153	Cords			
	White Spruce		2	Cords			
	4		Red Maple	Sawtimber	3.1		
Balsam Fir			Pulpwood	120	Cords		
Misc. Species 2		52		Cords			
Mixed Hardwood		106		Cords			
<i>Basswood</i>		13		<i>Cords</i>			
<i>Sugar Maple</i>		44		<i>Cords</i>			
<i>Yellow Birch</i>		49		<i>Cords</i>			
Quaking Aspen		100		Cords			
Red Maple		404		Cords			
White Spruce		42		Cords			
TOTAL:				17.6	MBF		
TOTAL:			2,350	Cords			

Sale Specific Conditions & Requirements

Sale Name: The Camp 4 Mystery

Sale Number: 32-012-26 Seq#: 1

1 - Sale Area

1.2 - Boundaries

1.2.1 - Painted Boundaries (9/19)

The sale boundary and Payment Unit boundaries are marked and identified by blue and red paint. Exterior sale boundary lines against private property are marked with blue paint. Exterior sale boundary lines against state are marked with red paint. Retention patches are marked with red paint; no harvesting activities may occur within these areas. The painted boundary line trees are not Included Timber and are to be protected unless marked with orange paint. Yalmer Road is the southern boundary for Payment Unit (s) 2-4 and is not painted.

2 - Timber Specifications

2.1 - Included Timber

2.1.1 - Clearcut Unit(s) with Unmerchantable Trees (6/14)

Within Payment Unit(s) 1, 2, and 4, cut all trees that are two (2) inches or more at DBH, except within Payment Unit (s) 1, do not cut cedar and hemlock. Also, within Payment Unit (s) 1, do not cut white pine greater than or equal to 15" DBH. Within Payment Unit (s) 2, do not cut white pine, hemlock, cedar, yellow birch, black cherry, and white ash. Within Payment Unit (s) 4, do not cut cedar, hemlock, and trees marked in green paint.

2.1.7 - Leave Tree Marked Unit(s) (6/14)

Within Payment Unit(s) 3, all trees, which meet minimum piece specifications in 2.2 Utilization, are designated for cutting except cedar, hemlock, white pine, yellow birch, and trees marked with green paint above and below stump height.

2.1.11 - Description of Timber Note (2/04)

Note that in Payment Unit (s) 4, Misc. Species 2 is dead ash.

3 - Payments

3.4 - Damaged Timber

3.4.1 - Damaged Timber (12/24)

General Condition and Requirement 3.4 Damaged Timber, defines liquidated damages for undesignated live merchantable trees which are cut or injured. In addition, extreme care should be taken to avoid damage to tree seedlings and saplings. No damage is acceptable to undesignated live merchantable trees. Within the Sale Area, if more than 10% of trees (> 4.5" DBH) within a specified area of the sale are damaged, liquidated damages will be assessed for all trees damaged. Rates will be in accordance with General Condition and Requirement 3.4 Damaged Timber.

4 - Transportation

4.1 - Construction

4.1.3 - Slash and Earthen Piles (8/04)

Piles or windrows of earth along roads and landings that have been widened or constructed shall be leveled. Slash from road maintenance or construction, including stumps, shall be dispersed throughout the sale.

4.1.4 - Timber Removed for Construction (3/23)

Trees cut or damaged in the process of pre-approved road, landing, or skid trail construction will be decked in an area separate from other Designated Timber and not removed until measured by the Sale Administrator. Payment will be made at contract prices or average prices, if not on the contract.

4.1.6 - Road Construction (4/24)

Construction of new roads or improvements of existing roads shall be done in such a way as to minimize the environmental and visual impacts. Merchantable trees shall be cut and utilized unless otherwise directed. Non-merchantable trees shall be severed and laid flat on the ground. Slash shall be scattered, not left in windrows, and kept a minimum of 10 feet back from the road edge. Stumps shall be set upright, not left on edge, and be moved at least 10 feet away from the road edge.

Disturbed soil shall be feathered into the woods and not left in berms or windrows.

4.1.7 - Road Closure (10/11)

All new roads built into the sale must be blocked to vehicle traffic upon completion of the sale. All new roads built into the sale must be blocked to vehicle traffic within 30 days of completion of hauling. Overgrown roads that are reopened shall be considered new roads. In general, this will require constructing a four (4') foot high berm of stumps and logs covered with earth. All stumps from road building and landing construction must be reserved to block any newly constructed roads upon completion of the sale. These stumps must be scattered along the road system to prohibit vehicular movement. Temporary berms may be required if no sale activity occurs for 30 or more consecutive days. Contact the Sale Administrator for specific details of design and placement.

4.2 - Maintenance

4.2.2 - Fill Material (4/07)

To maintain roads, fill material may be needed in areas where "holes" exist or may be expected to develop. This fill material should be placed before trucking begins. Contact the Sale Administrator regarding the availability of onsite sand or gravel from adjacent State-owned lands.

4.2.3 - Road maintenance (8/13)

The following road maintenance may be needed: Within 60 days of completion of hauling, or if no hauling occurs for 60 days, the road may need to be maintained and graded. This includes cleaning of drainage areas, grading, crowning and filling with gravel, if necessary. Damages will be assessed if grading/repair does not occur.

4.2.4 - Grading (10/16)

For completion of the sale, Camp 4 Road must be graded. In general, this will require a road grader or bulldozer to shape up the roads after forest products have been hauled off site. This includes cleaning of drainage areas, grading, crowning and filling with gravel, if necessary. The grading equipment to be used must be approved by the Unit Manager or his/her representative.

5 - Operations

5.1 - Notification

5.1.1 - Pre-sale Conference (10/25)

A pre-sale conference between the Purchaser and Sale Administrator is required prior to beginning any operations. The Unit Manager or his/her representative must be contacted at least 5 days in advance to schedule the conference.

5.2 - Conduct of Operations

5.2.3 - Operating Restrictions

5.2.3.1 - Operating Restrictions (9/11)

Within Payment Unit(s) 1, 2, and 4, unless changed by written agreement, cutting, skidding, and hauling are limited to frozen conditions, generally the period of 12/1 to 4/1. This restriction is due to wet soils.

5.2.17 - Timber Mats and Interlocking Composite Mats (5/23)

Some roads or skid trails may require extra protection such as that afforded by timber mats, interlocking composite mats, or another approved system. If available, mats may be borrowed from the DNR. A Timber Sale Contract Amendment will be used to document the Purchaser's use of the DNR's mats. Contact the Sale Administrator regarding availability and pick-up. Timber mats are available from various field offices. Composite mats are only available from the Grayling field office and the Marquette ICC. The Purchaser is responsible for picking up and hauling the mats to and from the site. The composite mats will require DNR staff onsite for installation and removal. Contact the Sale Administrator to schedule at least 30 days before desired install/removal date. All mats must be cleaned prior to drop off. This may include, but is not limited to, power washing and brushing to remove mud and debris. A charge of \$700.00 per timber mat and \$2,000.00 per composite mat will be assessed for all damaged or non-returned mats. Damage for the crane/timber mats is defined as three or more broken cants. Damage for the composite mats is defined as cracked or broken mats.

5.2.32 - Decking/Landing Restoration (9/13)

All decking and landing areas must have the surface area restored to a condition equal to or better than before. This is to ensure the proper regeneration of the stand. Wood debris, chips and "cookies" from trimmings must be removed or scattered

away from landing and loading areas and may not be windrowed on the edge.

5.2.37 - No Decking Areas (12/08)

No decking is allowed within 50 feet of Yalmer Road and Camp 4 Road.

5.2.38 - No Decking Against Live Trees (2/04)

Cut products may not be decked against unmarked or designated leave trees.

5.4 - Soil Protection

5.4.1 - Rutting Restriction, General (7/16)

Operations are to cease immediately if equipment and weather conditions result in rutting of roads and/or skid trails which are 12 inches or greater in depth and 50 feet in length. The Unit Manager or his/her representative may restrict hauling and/or skidding if ruts exceed the specified depth. With the Unit Manager or his/her representative's approval, the Purchaser may return to the area when the risk of rutting has decreased.

5.4.2 - Skid Trails (2/04)

Skid trails up and down slopes should be avoided. If, however, this is unavoidable, these trails will be left in a non-erodible condition using water bars, logs, and slash. Placing of slash on these skid trails while logging is ongoing may alleviate need for any further action. At the direction of the Sale Administrator, seed, fertilizer, and mulch may also be required.

6 - Safety and Fire Prevention

6.2 - Signing

6.2.1 - Road Posting (10/20)

The Purchaser is responsible for posting and maintaining caution signs on Yalmer Road and Camp 4 Road prior to beginning operations. The road must be posted at appropriate distances from the Sale Area to warn of logging activity and truck traffic. Signs must be removed when harvest operations are suspended or completed. The Purchaser will provide these signs.



TIMBER SALE MAP

This information provided by authority of Part 525, 1994 PA 451, as amended.

Sale Number

32-012-26

Date

03/16/2026

Forest Management Unit

Gwinn Mgt Unit

County

Marquette

Mapped By: Gould

Cruised By: Gould, Siler

Scale

1:20,000

Page

1

Of

1

Township
46N

Range
23W

Section(s) and
Subdivision(s) Sec. 4 NWSW,S1/2SW,W1/2SE; Sec. 5 E1/2NW,W1/2NE,SESE;

Cover Type

A = Aspen	J = Jack Pine	O = Oak	U = Upland Brush
B = Paper Birch	K = Rock	P = Lowland Poplar	UM = Upland Mix Forest
C = Cedar	L = Lowland Brush	Q = Mixed Swamp Conifer	V = Bog or Marsh
D = Treed Bog	LM = Lowland Mix Forest	R = Red Pine	W = White Pine
E = Swamp Hardwoods	M = Maple, Beech, Birch	S = Black Spruce	X = Non Stocked
F = Spruce/Fir	MC = Mixed Conifer	T = Tamarack	Y = Sand
G = Grass	MD = Mixed Deciduous	Z = Water	
H = Hemlock	N = Marsh		

Density

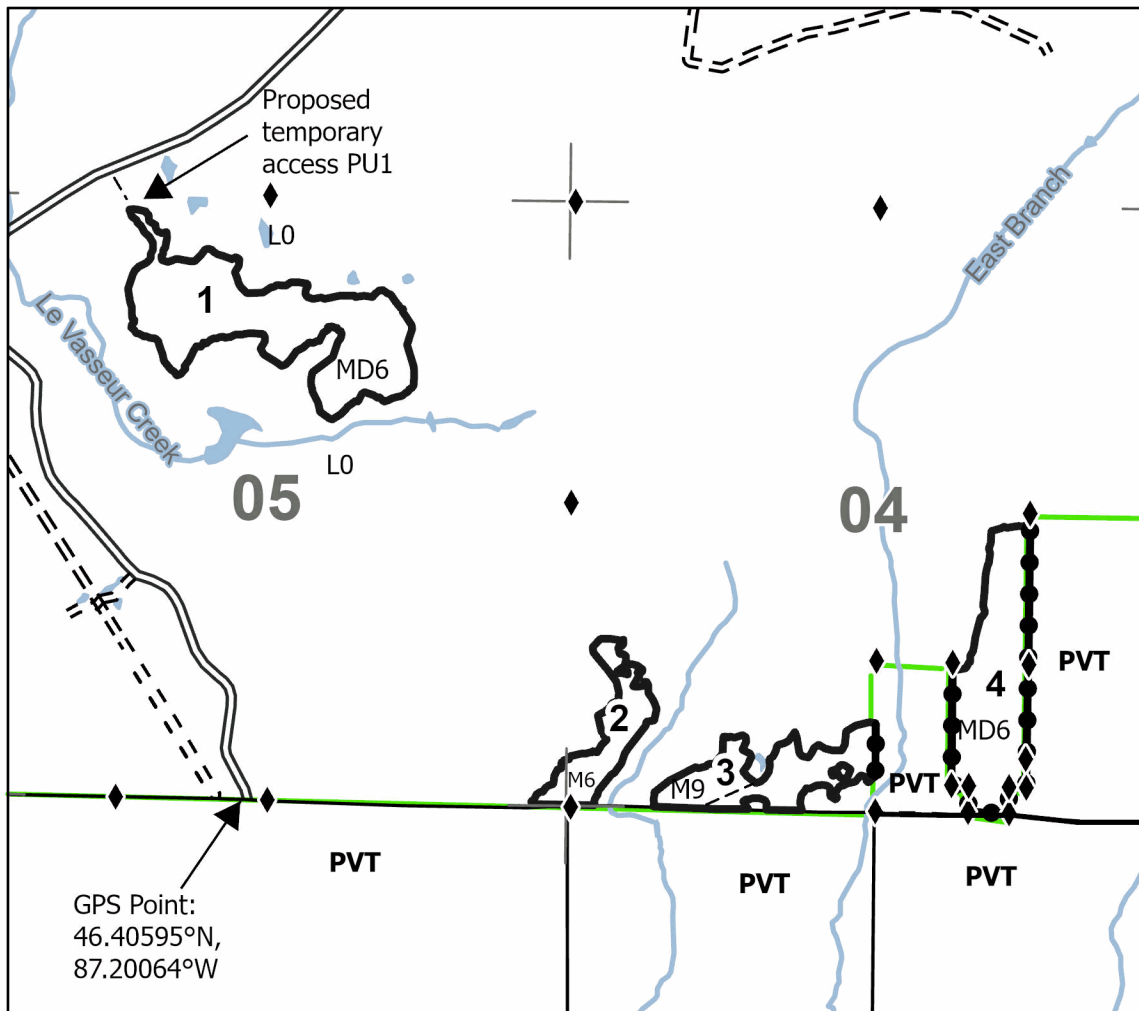
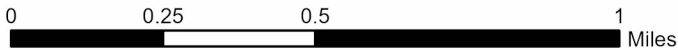
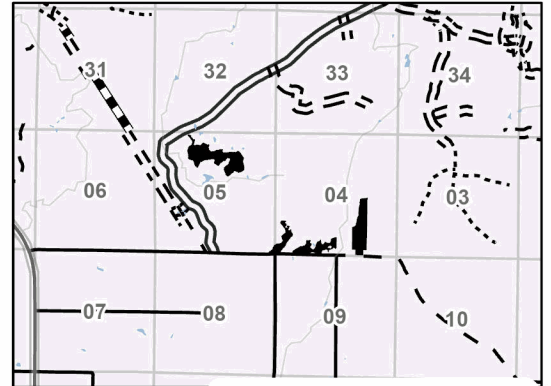
0 = Non Stocked	5 = Pole Timber Medium
1 = Seedling Sapling Poor	6 = Pole Timber Well
2 = Seedling Sapling Medium	7 = Saw Timber Poor
3 = Seedling Sapling Well	8 = Saw Timber Medium
4 = Pole Timber Poor	9 = Saw Timber Well

Payment Unit Number	Acres
1	41.8
2	11.7
3	17.1
4	28.7

The Camp 4 Mystery

99.3 Acres
Compartment 32293

Locator Map 1:100,000



Legend

- Lakes and Rivers
- Against State (Red)
- Private Line (Blue)
- Streams
- Primary Forest Road
- Forest Access Route
- Paved Road
- Private Gravel/Dirt
- Survey Grade Corner
- 01** Section Numbers
- State Boundary

Use QR Code to open Map in App



Hiker's Paradise (32-011-26)
T47N, R23W, SEC. 10; T47N, R23W, SEC. 12; T47N, R23W, SEC. 13; T47N,

In response to the notice of sale to be held 2:00 p.m. (local time) on July 20, 2026, I am hereby submitting my sealed bid (firm offer) for the following forest products to be cut. Bids for individual species must be at or above the advertised price. All non-responsive bid forms may be rejected.

<u>PRODUCTS & SPECIES</u>	<u>ESTIMATED VOLUME*</u>	<u>ADVERTISED PRICE</u>	<u>BID PRICE/UNIT</u>
Sawtimber			
Paper Birch	5.0 MBF	\$ 72.00/MBF	\$ _____
Red Maple	34.6 MBF	\$ 152.00/MBF	\$ _____
Sugar Maple	9.2 MBF	\$ 229.00/MBF	\$ _____
Pulpwood			
Balsam Fir	362 Cords	\$ 11.85/Cord	\$ _____
Black Spruce	457 Cords	\$ 13.10/Cord	\$ _____
Mixed Aspen	220 Cords	\$ 20.10/Cord	\$ _____
Mixed Hardwood	27 Cords	\$ 14.15/Cord	\$ _____
Paper Birch	450 Cords	\$ 13.30/Cord	\$ _____
Red Maple	1,978 Cords	\$ 14.15/Cord	\$ _____
Sugar Maple	342 Cords	\$ 14.15/Cord	\$ _____
Tamarack	5 Cords	\$ 13.00/Cord	\$ _____
White Spruce	173 Cords	\$ 13.10/Cord	\$ _____

*The volumes are statistically estimated within plus (+) or minus (-) 9.03 percent at 95% confidence level. These estimated volumes are final and not subject to adjustment. Prospective bidders are urged to examine this timber and to make their own estimates of quantity and quality.

I understand that any or all bids may be rejected. All bids must be signed and all bid items must be bid or the bid form may be rejected. I also understand that consideration and awarding a contract will be based upon my past performance and ability to complete the contract based upon equipment and staffing subject to my control.

FEDERAL ID: ____ - ____ - ____ or SOCIAL SECURITY NUMBER: ____ - ____ - ____

Company or individual bidding: _____

Company representative's name: _____

Address: _____

City: _____ State: _____ Zip: _____

IF AVAILABLE, PLEASE PLACE THE PERSONALIZED LABEL FROM YOUR PROSPECTUS IN THE ABOVE BOX.

Individual or company representative's signature: _____ Date: _____

Phone number : _____ Email (optional): _____

THE WINNING BIDDER MUST COMPLETE THE VERIFICATION OF WORKER'S DISABILITY COMPENSATION ACT COMPLIANCE (ON REVERSE SIDE IF DOUBLE SIDED) WITHIN 21 DAYS OF SALE AWARD DATE



FOR DEPARTMENT USE ONLY
Sale Number (XX - XXX - XX - XX)
Forest Management Unit:

TIMBER SALE VERIFICATION OF WORKER'S DISABILITY COMPENSATION ACT COMPLIANCE

*As required by Act 317, P.A. 1969 (Worker's Compensation) and
Part 5 of Act 451 of 1994, as amended.*

VERIFICATION OF WORKER'S DISABILITY COMPENSATION ACT COMPLIANCE

- This verification must be completed and submitted within 21 days of contract award and prior to the issuance of the timber sale contract.
- In addition, if boxes 2B or 2C are checked, then Notice of Exclusion or Certificate of Insurance must be submitted within twenty-one (21) days of the contract award and prior to the issuance of the timber sale contract.
- All information must be typed or printed except for written signatures.

Please Check Appropriate Categories:

1. My business is organized as (you **must** check one of the boxes below):
 - A. Sole Proprietorship (individual)
 - B. Partnership
 - C. Corporation

2. You **must** check one of the boxes below:
 - A. I certify my business is a sole proprietorship and it has no employees but the sole proprietor. I am not subject to the Worker's Compensation Laws.
 - B. I certify my business has satisfied its obligation to the Worker's Compensation Act through the use of an approved Notice of Exclusion (BWC-337, Rev. 5/96). I will provide a copy of the Notice of Exclusion within 21 days of the contract award. (For questions or a copy of the BWC-337, please call the Worker's Compensation Bureau at 517 -322-1195).
 - C. I certify my business has a Worker's Compensation Policy. I will provide an original Certificate of Insurance within twenty-one (21) days of the contract award.

3. If you have checked item 2(A) or 2(B), you **must** indicate the number of **both** full-time and part-time employees, other than yourself, including family members and active partners (if none, you must enter "0").

_____ Full-time Employees

_____ Part-time Employees

Name of Business		Federal ID (or) Social Security No.	
Address		Telephone ()	
City	State	ZIP	

I hereby certify that the above information is true and correct. I agree to notify the Michigan DNR of any changes that occur in factors affecting my coverage during any of my present and future operations.

Signature of Owner or Authorized Representative

Title

Date

Please complete the "SEALED BID" information on the next page

The Camp 4 Mystery (32-012-26)
T46N, R23W, SEC. 4; T46N, R23W, SEC. 5; Marquette COUNTY

In response to the notice of sale to be held 2:00 p.m. (local time) on July 20, 2026, I am hereby submitting my sealed bid (firm offer) for the following forest products to be cut. Bids for individual species must be at or above the advertised price. All non-responsive bid forms may be rejected.

<u>PRODUCTS & SPECIES</u>	<u>ESTIMATED VOLUME*</u>	<u>ADVERTISED PRICE</u>	<u>BID PRICE/UNIT</u>
Sawtimber			
Black Cherry	0.8 MBF	\$ 74.00/MBF	\$ _____
Red Maple	15.9 MBF	\$ 152.00/MBF	\$ _____
Sugar Maple	0.9 MBF	\$ 229.00/MBF	\$ _____
Pulpwood			
B. T. Aspen	16 Cords	\$ 20.10/Cord	\$ _____
Balsam Fir	253 Cords	\$ 11.85/Cord	\$ _____
Black Spruce	21 Cords	\$ 13.10/Cord	\$ _____
Misc. Species 2	83 Cords	\$ 1.00/Cord	\$ _____
Mixed Hardwood	233 Cords	\$ 14.15/Cord	\$ _____
Quaking Aspen	111 Cords	\$ 20.10/Cord	\$ _____
Red Maple	1,432 Cords	\$ 14.15/Cord	\$ _____
White Pine	26 Cords	\$ 12.10/Cord	\$ _____
White Spruce	175 Cords	\$ 13.10/Cord	\$ _____

*The volumes are statistically estimated within plus (+) or minus (-) 13.13 percent at 95% confidence level. These estimated volumes are final and not subject to adjustment. Prospective bidders are urged to examine this timber and to make their own estimates of quantity and quality.

I understand that any or all bids may be rejected. All bids must be signed and all bid items must be bid or the bid form may be rejected. I also understand that consideration and awarding a contract will be based upon my past performance and ability to complete the contract based upon equipment and staffing subject to my control.

FEDERAL ID: ____ - ____ - ____ or SOCIAL SECURITY NUMBER: ____ - ____ - ____

Company or individual bidding: _____

Company representative's name: _____

Address: _____

City: _____ State: _____ Zip: _____

IF AVAILABLE, PLEASE PLACE THE PERSONALIZED LABEL FROM YOUR PROSPECTUS IN THE ABOVE BOX.

Individual or company representative's signature: _____ Date: _____

Phone number : _____ Email (optional): _____

THE WINNING BIDDER MUST COMPLETE THE VERIFICATION OF WORKER'S DISABILITY COMPENSATION ACT COMPLIANCE (ON REVERSE SIDE IF DOUBLE SIDED) WITHIN 21 DAYS OF SALE AWARD DATE



FOR DEPARTMENT USE ONLY	
Sale Number (XX - XXX - XX - XX)	
Forest Management Unit:	

TIMBER SALE VERIFICATION OF WORKER'S DISABILITY COMPENSATION ACT COMPLIANCE

As required by Act 317, P.A. 1969 (Worker's Compensation) and
Part 5 of Act 451 of 1994, as amended.

VERIFICATION OF WORKER'S DISABILITY COMPENSATION ACT COMPLIANCE

- This verification must be completed and submitted within 21 days of contract award and prior to the issuance of the timber sale contract.
- In addition, if boxes 2B or 2C are checked, then Notice of Exclusion or Certificate of Insurance must be submitted within twenty-one (21) days of the contract award and prior to the issuance of the timber sale contract.
- All information must be typed or printed except for written signatures.

Please Check Appropriate Categories:

1. My business is organized as (you **must** check one of the boxes below):
 - A. Sole Proprietorship (individual)
 - B. Partnership
 - C. Corporation
2. You **must** check one of the boxes below:
 - A. I certify my business is a sole proprietorship and it has no employees but the sole proprietor. I am not subject to the Worker's Compensation Laws.
 - B. I certify my business has satisfied its obligation to the Worker's Compensation Act through the use of an approved Notice of Exclusion (BWC-337, Rev. 5/96). I will provide a copy of the Notice of Exclusion within 21 days of the contract award. (For questions or a copy of the BWC-337, please call the Worker's Compensation Bureau at 517 -322-1195).
 - C. I certify my business has a Worker's Compensation Policy. I will provide an original Certificate of Insurance within twenty-one (21) days of the contract award.
3. If you have checked item 2(A) or 2(B), you **must** indicate the number of **both** full-time and part-time employees, other than yourself, including family members and active partners (if none, you must enter "0").

_____ Full-time Employees

_____ Part-time Employees

Name of Business		Federal ID (or) Social Security No.	
Address		Telephone ()	
City	State	ZIP	

I hereby certify that the above information is true and correct. I agree to notify the Michigan DNR of any changes that occur in factors affecting my coverage during any of my present and future operations.

Signature of Owner or Authorized Representative

Title

Date

Please complete the "SEALED BID" information on the next page