



**DEPARTMENT OF NATURAL RESOURCES
STATE OF MICHIGAN
TIMBER SALE PROSPECTUS #7798**

SCHEDULED SALE DATE AND TIME: 3:00 p.m. (local time) on May 21, 2026.

LOCATION: NEWBERRY MGMT UNIT, 5666 S STATE HWY M 123, NEWBERRY, MI 49868.

PROSPECTUS NOTE: The bidder is advised to inspect the sale area and review the location, estimated volumes, operating costs and contract terms of proposed sales. Please be aware that some landowners may request 60 days or more notice for access across their land.

Notice is hereby given that bids will be received by the Unit Manager, NEWBERRY MANAGEMENT UNIT, for certain timber on the following described lands:

McTivers Lake Mix (42-017-25) / T49N, R10W, SEC. 27, SWNE,N1/2SW,N1/2SE.

T49N, R10W, SEC. 33, NESE,S1/2SE.

T49N, R10W, SEC. 34, S1/2NW,NE,SW,SE.

T49N, R10W, SEC. 35, S1/2NW,S1/2NE,N1/2SW,SESW,SE.

Luce County, Advertised Price \$90,147.65, 375.7 Acres, Hardwood, White Pine.

SALE NOTE: Roads may require the installation of culverts for cross drainage or at natural drainage-ways. See Sale Spec 4.1.5 for details.

Road work and/or road maintenance is required. See Sale Spec 4.1.8 and 4.2.3 for specifics.

Permission for access across private land is the responsibility of the Purchaser.

Some roads or skid trails may require extra protection such as that afforded by timber mats, interlocking composite mats, or another approved system. See Sale spec 5.2.17 for additional information.

A snowmobile trail and is shown on the Timber Sale Map. See Sale Spec 5.2.41 for restrictions.

A recreation site such as a trail, pathway, or campground is within the sale area or the vicinity. Certain restrictions/specifications may be applicable including time restrictions.

Shamrock Jack (42-018-25) / T49N, R10W, SEC. 36, SENW,SWNE,SW,SE.

Luce County, Advertised Price \$43,448.25, 148.9 Acres, White Pine, Jack Pine.

SALE NOTE: The Purchaser is responsible for posting and maintaining caution signs on County Road 414, Chris Brown Lake, and Shamrock Roads prior to beginning operations.

BID INSTRUCTIONS (VER. 10/10/2022):

1. Scheduled Bid Location, Date, and Time (2/11)

Bids must be received by the Unit Manager, NEWBERRY OFFICE, 5666 S STATE HWY M 123, NEWBERRY, MI 49868, no later than 3:00 p.m. (local time) on May 21, 2026. For further information concerning this sale, contact Keith Magnusson at 906-291-0120 extension n/a.

2. Bidder's Qualifications (10/22)

If all or part of a timber sale was prepared by a private contractor, the contractor and that contractor's company are not permitted to bid on the timber sale. A person must be 18 years of age or older to purchase timber. Permanent employees of the Department of Natural Resources or members of their immediate household may not bid. Former employees, in the permanent or seasonal class, may not bid until 3 months after the last day of active duty. Bids will not be accepted from individuals or companies appearing on the DNR/FRD No-Bid List. This list contains the names of purchasers who previously failed to execute a contract within 21-days or who have a history of poor performance.

3. Preparation of Sealed Bids (5/16)

Bid Forms may be completed online thru Michigan DNR Timber Sale Online Bidding (OLB) at www.michigan.gov/timberbidding or by completing the hardcopy Bid Form found in the Timber Sale Prospectus. Hardcopy Bid Forms shall be manually signed in ink. Registration in OLB is considered your 'signature' for all bids submitted thru that system. Bid prices must be entered for each species and product in the Bid Price column for all material subject to bidding and all fill-in blanks must be completed. If erasures or other changes appear on the hardcopy Bid Form, each erasure or change must be initialed by the person signing the bid.

4. Submission of Sealed Bids (5/16)

Bid forms may be obtained from the Unit Manager or thru OLB. Bids may be submitted hardcopy or thru OLB. All hardcopy bids must be submitted on the bid form and in an envelope clearly identified as described in this section. NOTE: Only one bid form per bid envelope. Sealed bids must be submitted to the Unit office designated in the prospectus and must be submitted at or prior to the time established in the prospectus. The envelope should show on the outside (a) the sale name or number and (b) the date and time of bid opening, as shown in the prospectus. Bids received after the time specified in the sale prospectus are late bids and will be rejected.

It is possible for a bidder to submit multiple bids on a single sale. For example, a bid may be submitted hardcopy and a bid may be submitted thru OLB. Or, two bidders from the same company could both submit bids on the same sale. If this were to happen, the State would accept all bids received and award the contract accordingly. All bidding and contractual requirements would apply to all bids received.

5. Public Opening of Sealed Bids (7/16)

If conditions permit, the sealed bids will be publicly opened and posted at the time and place set in the prospectus.

If a bidder, present at a bid opening, has submitted bids on more than one sale, that bidder may withdraw their unopened bid envelopes or announce the withdrawal of their online bid after being declared the successful bidder on one sale.

6. Award of Contract (1/11)

Award of the contract will be made to the Bidder whose bid, conforming to the prospectus, is most advantageous to the State of Michigan on the basis of total value at rates bid for the estimated quantities. The State reserves the right to reject any bid or waive any minor irregularity in bids received. A written award mailed (or otherwise furnished) to the successful Bidder shall be deemed to result in a binding contract without further action by either party.

7. Down Payment (1/11)

The Bidder to whom award is made must make a down payment within 21 days of the sale award. The amount of the down payment will be calculated as shown in the Bond and Payment Schedule of this prospectus. Only cash may be used to meet this requirement.

8. Performance Security (1/11)

As guarantee of faithful performance, a cash bond, certificate of deposit, surety bond or irrevocable letter of credit (LOC) is required within 21 days of the sale award. The amount of the performance security is shown in the Bond and

Payment Schedule of this prospectus. If an LOC or surety is used, the coverage must extend for at least 6 months beyond the contract expiration.

9. Worker's Compensation (10/22)

Purchaser shall obtain worker's compensation insurance to cover claims under Michigan's Worker's Disability Compensation Act of 1969 or similar employee benefit act of any other state applicable to an employee. Verification of Worker's Disability Compensation Act Compliance must be completed and submitted within 21 days of contract award and prior to the issuance of the timber sale contract. In addition, if applicable, Notice of Exclusion or Certificate of Insurance must also be submitted.

10. Timber Sale Contract (10/22)

Additional conditions and requirements common to all timber sales are listed on the timber sale contract (R4031) and are available on line at www.michigan.gov/timber. Contact the Unit Manager for additional information or a sample contract. Within 21 days of the date of the award letter, the bidder must sign the contract and provide the required down payment, performance security, and verification of worker's disability compensation. The down payment and performance security shall be in accordance with the provisions of the timber sale contract, in the sums stated in this prospectus. If these actions are not taken, then the Bidder, the Bidder's corporation, and the corporation's principals may not be permitted to bid on State timber sales for a period of 3 months after the first offense, 6 months after the second offense, and 1 year after the third offense. An offense will only be counted against the Bidder for 5 years. In addition, the Bidder certifies that if awarded this contract, the Bidder will complete the timber sale contract in accordance with its terms and any modifications thereof including requirements to purchase, cut, and remove the included timber by the expiration date.

Payment Unit values in the State Forest Timber Sale Contract are calculated based on the advertised value of the Payment Unit as a percentage of the total advertised value of the contract. The advertised value of each Payment Unit is given in the Description of Timber by Payment Unit table on the Timber Sale Information page. For example, if the value of Payment Unit 1 is advertised as \$1,500 and the total Timber Sale value is advertised as \$10,000, the contract price for Payment Unit 1 will be 15% of the total bid price ($\$1,500/\$10,000 * 100$).

11. Disclaimer of Estimates and Bidder's Warranty of Inspection (10/22)

Before submitting this bid, the Bidder is advised and cautioned to inspect the sale area, review the requirements of the sale contract, and take other steps as may be reasonably necessary to ascertain the location, estimated volumes, construction estimates, and operating costs of the proposed sale. Failure to do so will not relieve the Bidder from responsibility for completing the contract.

The Bidder warrants that this bid is submitted solely on the basis of the Bidder's examination and inspection of the quality and quantity of the timber offered for sale and the Bidder's opinion of the value thereof and the costs of recovery. No reliance should be placed on the State of Michigan's estimates of timber quality, quantity or costs of recovery. Bidder further acknowledges that the State of Michigan: (i) expressly disclaims any warranty of fitness of timber for any purpose; (ii) offers this timber as is without any warranty of quality (merchantability) or quantity and (iii) expressly disclaims any warranty as to the quantity or quality of timber sold.

12. Certification and Chain-of-Custody (10/22)

Unless otherwise indicated in the contract under section 7 – Other Conditions of the Sale Specific Conditions & Requirements, the area encompassed by this timber sale is certified to the standards of the Forest Stewardship Council (FSC) - Certificate #SCS-FM/COC-00090N and the Sustainable Forestry Initiative (SFI) - Certificate #NSF-SFIS-5Y031-SF5. Forest products from this sale may be delivered to the mill as "FSC 100% and / or SFI certified" as long as the contractor hauling the forest products is chain-of-custody (COC) certified or covered under a COC certificate from the destination mill. The purchaser is responsible for maintaining COC after leaving the sale area.

13. Good Neighbor Authority (GNA) Requirements (10/22)

If the name of this timber sales contains the acronym GNA, it is authorized by the Good Neighbor Authority (GNA) and covered by various agreements between the U.S. Forest Service and the State. The timber sale occurs on federal land and the following conditions apply:

GNA contracts on US Forest Service land will not be awarded to purchasers on the Federal list of excluded parties. The System for Award Management (SAM) will be checked for active excluded parties prior to award of contract. In

addition, the Bidder to whom award is made must complete an Assurance Regarding Felony Conviction or Tax Delinquent Status for Corporate Applicants (AD-3031).

14. Good Neighbor Authority (GNA) Requirements, con't (10/22)

Bidder certifies, by signing this bid form, that to the best of Bidder's knowledge that the following representations are accurate and complete.

- a. That the Bidder and its principals are not presently debarred, suspended, proposed for debarment, declared ineligible, or voluntary excluded from timber sales (covered transactions) by any Federal department or agency.
- b. That the Bidder and its principals have not within a 3-year period preceding this bid been convicted of or had a civil judgment rendered against them for commission of fraud or a criminal offense in connection with obtaining , attempting to obtain, or performing a public (Federal, State, or local) transaction or contract under a public transaction; violation of Federal or State antitrust statutes or commission of embezzlement, theft, forgery, bribery, falsification or destruction of records, making false statements, or receiving stolen property.
- c. That the Bidder and its principals are not presently indicted for or otherwise criminally or civilly charged by a governmental entity (Federal, State, or local) with commission of any of the offenses enumerated in paragraph b of this certification.
- d. That the Bidder and its principals have not within a 3-year period preceding this bid had one or more public transactions (Federal, State, or local) terminated for breach or default of a timber or forest product contract.

Bidders that cannot certify this requirement, in whole or in part, shall submit an explanation with their bid.

Scott Bowen
Director

TIMBER SALE INFORMATION

McTivers Lake Mix (42-017-25)

T49N, R10W, SEC. 27; T49N, R10W, SEC. 33; T49N, R10W, SEC. 34; T49N, R10W, SEC. 35.
Luce County (Advertised Price \$90,147.65)

SALE NOTE: Roads may require the installation of culverts for cross drainage or at natural drainage-ways. See Sale Spec 4.1.5 for details.

Road work and/or road maintenance is required. See Sale Spec 4.1.8 and 4.2.3 for specifics.

Permission for access across private land is the responsibility of the Purchaser.

Some roads or skid trails may require extra protection such as that afforded by timber mats, interlocking composite mats, or another approved system. See Sale spec 5.2.17 for additional information.

A snowmobile trail and is shown on the Timber Sale Map. See Sale Spec 5.2.41 for restrictions.

A recreation site such as a trail, pathway, or campground is within the sale area or the vicinity. Certain restrictions/specifications may be applicable including time restrictions.

A timber sale contract for this lump sum, sealed bid timber sale will be awarded to the responsible bidder offering the highest sealed bid price. All units of volume listed below were estimated using the Inventory Manager computer program and the new Michigan taper model. Bids must be at or above the following advertised price for each product and species:

<u>PRODUCTS & SPECIES</u>	<u>ESTIMATED UNITS*</u>	<u>ADVERTISED PRICE</u>
Sawtimber		
Beech	1.7 MBF	\$ 127.00 / MBF
Red Maple	108.7 MBF	\$ 34.00 / MBF
Sugar Maple	27.4 MBF	\$ 323.00 / MBF
Yellow Birch	5.0 MBF	\$ 51.00 / MBF
Pulpwood		
Balsam Fir	330 Cords	\$ 4.50 / Cord
Mixed Aspen	571 Cords	\$ 12.00 / Cord
Mixed Hardwood	3,092 Cords	\$ 6.35 / Cord
Mixed Spruce	899 Cords	\$ 3.00 / Cord
N. White Cedar	243 Cords	\$ 2.40 / Cord
Red Pine	262 Cords	\$ 48.35 / Cord
Tamarack	21 Cords	\$ 3.20 / Cord
White Pine	2,797 Cords	\$ 11.85 / Cord

* The total volume is statistically estimated within plus (+) or minus (-) 8.35 percent. There are an estimated 8,723 cords on this timber sale, plus or minus 729 cords at the 95% confidence level. The estimated units are final and not subject to adjustment. Prospective bidders are urged to examine this timber and to make their own estimates of quantity and quality.

BOND AND PAYMENT SCHEDULE:

1. A bond in the amount of \$4,507.00 to insure faithful performance of the conditions of the contract will be deposited by the successful bidder within 21 days of the sale award.
2. Cutting in any sale or unit without the required advance payment would be considered a trespass.
3. Total payment must be paid in advance or according to the following schedule:
 - (a) Ten percent (10%) of the sale value must be paid within 21 days of the sale award.
 - (b) The 10% down payment will be credited towards the first unit cut.

(c) Payment for each of the following units must be made before cutting begins in that unit:

PAYMENT UNIT NUMBER	PERCENT OF TOTAL SALE VALUE
01	4.1%
02	3.3%
03	4.3%
04	4.9%
05	3.4%
06	5.8%
07	11.9%
08	6.3%
09	7.1%
10	12.1%
11	9.5%
12	10.3%
13	10.2%
14	6.8%

4. If no cutting takes place, the 10% down payment will not be refunded.

5. Operations on the contract issued will terminate on 12/31/2030.

SALE STATISTICS

Volumes were calculated in cubic feet using the Michigan taper model. Cubic foot volume includes all wood inside bark for the product indicated. For display purposes, cubic feet were converted to cords and MBF using a simple conversion factor, e.g. 79 cubic feet per cord and 185 cubic feet per MBF. The cubic foot volumes are precise; the cords and MBF volumes are not. Cubic foot volume cannot be directly converted to cords or boards with precision.

SALE VOLUMES

The total estimated sale volume may not equal the sum of the species/products due to the nature of statistical calculations associated with double sampling methodology.

VOLUME		STATISTICAL RANGE IN CORDS		
TOTAL CUBIC FEET	TOTAL CORDS	PERCENT ERROR	MINIMUM	MAXIMUM
689,097	8,723	8.35%	7,994	9,452

VDU VOLUMES

A VDU is a Volume Determination Unit. Volumes and their associated statistics are calculated at the VDU level and summarized to the sale level. There is often a one to one relationship between a VDU and a Payment Unit, but not always, depending on the cruise design. Refer to the VDU TO PAYMENT UNIT table.

VDU	VOLUME			RANGE IN CORDS	
	TOTAL CUBIC FEET	TOTAL CORDS	PERCENT ERROR	MINIMUM	MAXIMUM
17	59,244	750	20.35%	597	903
41	93,050	1,178	22.25%	916	1,440
47	91,423	1,157	20.21%	923	1,391
65	186,906	2,366	15.61%	1,997	2,735
92	258,475	3,272	15.50%	2,765	3,779
TOTAL:	689,097	8,723		7,198	10,248

VDU TO PAYMENT UNIT

When a VDU is associated with more than one Payment Unit (PU), the VDU volumes are assigned to the PU based on acres of the VDU within the PU.

VDU	VDU ACRES	PU	PU ACRES
TOTAL:			

DESCRIPTION OF TIMBER BY PAYMENT UNIT (PU)

PU	MARKET GROUP	PRODUCT	QUANTITY	UNIT	ACRES	ADVERTISE PRICE
1	Red Maple	Sawtimber	11.4	MBF	19.1	\$3,661.65
	Yellow Birch		1.7	MBF		
	Balsam Fir	Pulpwood	25	Cords		
	Mixed Aspen		32	Cords		
	<i>B. T. Aspen</i>		30	<i>Cords</i>		
	<i>Quaking Aspen</i>		2	<i>Cords</i>		
	Mixed Hardwood		210	Cords		
	<i>Beech</i>		33	<i>Cords</i>		
	<i>Paper Birch</i>		2	<i>Cords</i>		
	<i>Red Maple</i>		167	<i>Cords</i>		
	<i>Yellow Birch</i>		8	<i>Cords</i>		
	Mixed Spruce		17	Cords		
	<i>White Spruce</i>		17	<i>Cords</i>		
	Red Pine		3	Cords		
	White Pine		98	Cords		
2	Red Maple	Sawtimber	9.2	MBF	15.5	\$2,985.75
	Yellow Birch		1.4	MBF		
	Balsam Fir	Pulpwood	20	Cords		
	Mixed Aspen		25	Cords		
	<i>B. T. Aspen</i>		24	<i>Cords</i>		
	<i>Quaking Aspen</i>		1	<i>Cords</i>		
	Mixed Hardwood		170	Cords		
	<i>Beech</i>		27	<i>Cords</i>		
	<i>Paper Birch</i>		2	<i>Cords</i>		
	<i>Red Maple</i>		135	<i>Cords</i>		
	<i>Yellow Birch</i>		6	<i>Cords</i>		
	Mixed Spruce		13	Cords		
	<i>White Spruce</i>		13	<i>Cords</i>		
	Red Pine		3	Cords		
	White Pine		80	Cords		
3	Red Maple	Sawtimber	9.5	MBF	22.6	\$3,889.45
	Sugar Maple		6.4	MBF		
	Balsam Fir	Pulpwood	5	Cords		
	Mixed Aspen		2	Cords		
	<i>Quaking Aspen</i>		2	<i>Cords</i>		
	Mixed Hardwood		225	Cords		
	<i>Beech</i>		87	<i>Cords</i>		
	<i>Red Maple</i>		110	<i>Cords</i>		
	<i>Sugar Maple</i>		28	<i>Cords</i>		
	Mixed Spruce		8	Cords		
	<i>White Spruce</i>		8	<i>Cords</i>		
	4	Red Maple	Sawtimber	10.8		
Sugar Maple			7.3	MBF		
Balsam Fir		Pulpwood	6	Cords		
Mixed Aspen			2	Cords		
<i>Quaking Aspen</i>			2	<i>Cords</i>		
Mixed Hardwood			256	Cords		
<i>Beech</i>			99	<i>Cords</i>		
<i>Red Maple</i>			125	<i>Cords</i>		
<i>Sugar Maple</i>			32	<i>Cords</i>		
Mixed Spruce			9	Cords		
<i>White Spruce</i>			9	<i>Cords</i>		
5		Red Maple	Sawtimber	7.5	MBF	17.9
	Sugar Maple		5.1	MBF		
	Balsam Fir	Pulpwood	4	Cords		
	Mixed Aspen		1	Cords		

DESCRIPTION OF TIMBER BY PAYMENT UNIT (PU), CON'T

PU	MARKET GROUP	PRODUCT	QUANTITY	UNIT	ACRES	ADVERTISE PRICE				
5 con't	<i>Quaking Aspen</i>	<i>Pulpwood</i>	1	<i>Cords</i>						
	Mixed Hardwood		178	Cords						
	<i>Beech</i>		69	<i>Cords</i>						
	<i>Red Maple</i>		87	<i>Cords</i>						
	<i>Sugar Maple</i>		22	<i>Cords</i>						
	Mixed Spruce		6	Cords						
	<i>White Spruce</i>		6	<i>Cords</i>						
6	Red Maple	Sawtimber	12.6	MBF	30.0	\$5,184.00				
	Sugar Maple		8.6	MBF						
	Balsam Fir	<i>Pulpwood</i>	7	Cords						
	Mixed Aspen		2	Cords						
	<i>Quaking Aspen</i>		2	<i>Cords</i>						
	Mixed Hardwood		298	Cords						
	<i>Beech</i>		116	<i>Cords</i>						
	<i>Red Maple</i>		146	<i>Cords</i>						
	<i>Sugar Maple</i>		36	<i>Cords</i>						
	Mixed Spruce		10	Cords						
	<i>White Spruce</i>		10	<i>Cords</i>						
	7		Beech	Sawtimber			1.7	MBF	35.9	\$10,758.10
			Red Maple				39.0	MBF		
Yellow Birch			1.9	MBF						
Balsam Fir		<i>Pulpwood</i>	53	Cords						
Mixed Aspen			71	Cords						
<i>B. T. Aspen</i>			71	<i>Cords</i>						
Mixed Hardwood			679	Cords						
<i>Beech</i>			72	<i>Cords</i>						
<i>Red Maple</i>			563	<i>Cords</i>						
<i>Yellow Birch</i>			44	<i>Cords</i>						
Mixed Spruce			18	Cords						
<i>White Spruce</i>			18	<i>Cords</i>						
N. White Cedar			1	Cords						
Red Pine			24	Cords						
White Pine			211	Cords						
8	Red Maple		Sawtimber	1.0	MBF	22.7	\$5,665.45			
	Balsam Fir	<i>Pulpwood</i>	26	Cords						
	Mixed Aspen		58	Cords						
	<i>B. T. Aspen</i>		56	<i>Cords</i>						
	<i>Quaking Aspen</i>		2	<i>Cords</i>						
	Mixed Hardwood		111	Cords						
	<i>Beech</i>		1	<i>Cords</i>						
	<i>Paper Birch</i>		6	<i>Cords</i>						
	<i>Red Maple</i>		104	<i>Cords</i>						
	Mixed Spruce		67	Cords						
	<i>Black Spruce</i>		67	<i>Cords</i>						
	N. White Cedar		33	Cords						
	Red Pine		21	Cords						
	Tamarack		3	Cords						
	White Pine		237	Cords						
9	Red Maple	Sawtimber	1.1	MBF	25.7	\$6,438.95				
	Balsam Fir	<i>Pulpwood</i>	30	Cords						
	Mixed Aspen		66	Cords						
	<i>B. T. Aspen</i>		64	<i>Cords</i>						
	<i>Quaking Aspen</i>		2	<i>Cords</i>						
	Mixed Hardwood		126	Cords						
	<i>Beech</i>		1	<i>Cords</i>						
	<i>Paper Birch</i>		7	<i>Cords</i>						

DESCRIPTION OF TIMBER BY PAYMENT UNIT (PU), CON'T

PU	MARKET GROUP	PRODUCT	QUANTITY	UNIT	ACRES	ADVERTISE PRICE
9 con't	<i>Red Maple</i>	<i>Pulpwood</i>	118	<i>Cords</i>		
	Mixed Spruce		76	Cords		
	<i>Black Spruce</i>		76	<i>Cords</i>		
	N. White Cedar		37	Cords		
	Red Pine		24	Cords		
	Tamarack		3	Cords		
	White Pine		269	Cords		
10	Red Maple	Sawtimber	1.9	MBF	43.3	\$10,812.25
	Balsam Fir	Pulpwood	50	Cords		
	Mixed Aspen		111	Cords		
	<i>B. T. Aspen</i>		107	<i>Cords</i>		
	<i>Quaking Aspen</i>		4	<i>Cords</i>		
	Mixed Hardwood		212	Cords		
	<i>Beech</i>		2	<i>Cords</i>		
	<i>Paper Birch</i>		12	<i>Cords</i>		
	<i>Red Maple</i>		198	<i>Cords</i>		
	Mixed Spruce		128	Cords		
	<i>Black Spruce</i>		128	<i>Cords</i>		
	N. White Cedar		62	Cords		
	Red Pine		40	Cords		
	Tamarack		3	Cords		
	White Pine		453	Cords		
11	Red Maple	Sawtimber	1.5	MBF	34.2	\$8,564.70
	Balsam Fir	Pulpwood	40	Cords		
	Mixed Aspen		87	Cords		
	<i>B. T. Aspen</i>		85	<i>Cords</i>		
	<i>Quaking Aspen</i>		2	<i>Cords</i>		
	Mixed Hardwood		168	Cords		
	<i>Beech</i>		2	<i>Cords</i>		
	<i>Paper Birch</i>		9	<i>Cords</i>		
	<i>Red Maple</i>		157	<i>Cords</i>		
	Mixed Spruce		101	Cords		
	<i>Black Spruce</i>		101	<i>Cords</i>		
	N. White Cedar		49	Cords		
	Red Pine		32	Cords		
	Tamarack		4	Cords		
	White Pine		358	Cords		
12	Red Maple	Sawtimber	1.2	MBF	31.4	\$9,296.40
	Balsam Fir	Pulpwood	24	Cords		
	Mixed Aspen		43	Cords		
	<i>B. T. Aspen</i>		43	<i>Cords</i>		
	Mixed Hardwood		173	Cords		
	<i>Beech</i>		9	<i>Cords</i>		
	<i>Paper Birch</i>		5	<i>Cords</i>		
	<i>Red Maple</i>		145	<i>Cords</i>		
	<i>Yellow Birch</i>		14	<i>Cords</i>		
	Mixed Spruce		169	Cords		
	<i>Black Spruce</i>		169	<i>Cords</i>		
	N. White Cedar		23	Cords		
	Red Pine		43	Cords		
	Tamarack		3	Cords		
	White Pine		412	Cords		
13	Red Maple	Sawtimber	1.2	MBF	31.0	\$9,221.80
	Balsam Fir	Pulpwood	24	Cords		
	Mixed Aspen		43	Cords		
	<i>B. T. Aspen</i>		43	<i>Cords</i>		

DESCRIPTION OF TIMBER BY PAYMENT UNIT (PU), CON'T

PU	MARKET GROUP	PRODUCT	QUANTITY	UNIT	ACRES	ADVERTISE PRICE
13 con't	Mixed Hardwood	Pulpwood	172	Cords		
	<i>Beech</i>		9	<i>Cords</i>		
	<i>Paper Birch</i>		5	<i>Cords</i>		
	<i>Red Maple</i>		144	<i>Cords</i>		
	<i>Yellow Birch</i>		14	<i>Cords</i>		
	Mixed Spruce		166	Cords		
	<i>Black Spruce</i>		166	<i>Cords</i>		
	N. White Cedar		23	Cords		
	Red Pine		43	Cords		
	Tamarack		3	Cords		
	White Pine		407	Cords		
14	Red Maple	Sawtimber	0.8	MBF	20.7	\$6,159.85
	Balsam Fir	Pulpwood	16	Cords		
	Mixed Aspen		28	Cords		
	<i>B. T. Aspen</i>		28	<i>Cords</i>		
	Mixed Hardwood		114	Cords		
	<i>Beech</i>		6	<i>Cords</i>		
	<i>Paper Birch</i>		3	<i>Cords</i>		
	<i>Red Maple</i>		96	<i>Cords</i>		
	<i>Yellow Birch</i>		9	<i>Cords</i>		
	Mixed Spruce		111	Cords		
	<i>Black Spruce</i>		111	<i>Cords</i>		
	N. White Cedar		15	Cords		
	Red Pine		29	Cords		
	Tamarack		2	Cords		
	White Pine		272	Cords		
TOTAL:			142.8	MBF		
TOTAL:			8,215	Cords		

Sale Specific Conditions & Requirements

Sale Name: McTivers Lake Mix

Sale Number: 42-017-25 Seq#: 1

1 - Sale Area

1.2 - Boundaries

1.2.1 - Painted Boundaries (9/19)

The sale boundary and Payment Unit boundaries are marked and identified by blue, red and yellow paint. Exterior sale boundary lines against private property are marked with blue paint. Exterior sale boundary lines against state are marked with red paint. Interior Payment Unit boundaries are marked with yellow paint. Retention patches are marked with red paint; no harvesting activities may occur within these areas. The painted boundary line trees are not Included Timber and are to be protected unless marked with orange paint. Yellow painted trees designating an interior Payment Unit boundary are only to be cut when all surrounding Payment Units have been paid.

2 - Timber Specifications

2.1 - Included Timber

2.1.2 - Clearcut Unit(s) w/o Unmerchantable Trees (8/11)

Within Payment Unit(s) 12, 13, 14, cut all trees which meet minimum piece specifications in 2.2 Utilization, except leave all hemlock and white pine over 20 inches at DBH.

2.1.3 - Cut Tree Marked Unit(s) (12/08)

Within Payment Unit(s) 3, 4, 5, 6, all trees are designated for cutting when marked with orange paint above and below stump height, regardless of merchantability.

2.1.7 - Leave Tree Marked Unit(s) (6/14)

Within Payment Unit(s) 1, 2, 7, 8, 9, 10, 11, all trees, which meet minimum piece specifications in 2.2 Utilization, are designated for cutting except do not cut trees marked with green paint above and below stump height. In addition, do not cut any hemlock. Do not cut any white pine over 20 inches at DBH.

In Payment Units 8, 9, 10 and 11, do not cut any yellow birch.

3 - Payments

3.3 - Pre-measured Sales

3.3.4 - Dividing Payment Units (7/14)

Payment Unit(s) 7 and 10-13 may be divided at the request of the Purchaser and upon approval of the Unit Manager. Dividing Payment Units is a contract modification which requires a Timber Sale Contract Amendment. There will be only one division per Payment Unit.

4 - Transportation

4.1 - Construction

4.1.4 - Timber Removed for Construction (3/23)

Trees cut or damaged in the process of pre-approved road, landing, or skid trail construction will be decked in an area separate from other Designated Timber and not removed until measured by the Sale Administrator. Payment will be made at contract prices or average prices, if not on the contract.

4.1.5 - Culverts (5/14)

Roads may require the installation of culverts for cross drainage or at natural drainage-ways. If culverts are needed in these locations, their placement will be specified by the Sale Administrator, and they shall be installed prior to hauling. The culverts shall be new, corrugated metal. Culverts will be a minimum of 12 inches in diameter and 24 feet in length. If culverts are removed, fill shall be removed from wetland soils as specified. Soils shall be maintained and left in a non-erodible condition, with water bars, seed, fertilizer, mulch, and slash installed as directed by the Sale Administrator and as specified in the BMP manual. Stream crossing permits, if needed, will be obtained by the DNR.

4.1.6 - Road Construction (4/24)

Construction of new roads or improvements of existing roads shall be done in such a way as to minimize the environmental and visual impacts. Merchantable trees shall be cut and utilized unless otherwise directed. Non-merchantable trees shall be severed and laid flat on the ground. Slash shall be scattered, not left in windrows, and kept a minimum of 10 feet back from the road edge. Stumps shall be set upright, not left on edge, and be moved at least 10 feet away from the road edge. Disturbed soil shall be feathered into the woods and not left in berms or windrows.

4.1.7 - Road Closure (10/11)

All new roads will be closed upon completion of the sale.

4.1.8 - Road Work (1) (8/07)

The following road work is required when using Chris Brown Lake Road: 100 yards of gravel to be spread in places that have sand blow holes or may develop blowouts. Any gravel used must be acceptable to DNR. See Sale Administrator or Unit Manager for use of possible DNR gravel resources.

4.2 - Maintenance

4.2.1 - Hauling Restriction (12/08)

Hauling may be restricted on forest roads by the Unit Manager or his/her representative. The restriction may occur during spring breakup or may occur during wet weather conditions.

4.2.3 - Road maintenance (8/13)

The following road maintenance is required: the road must be maintained and graded. This includes cleaning of drainage areas, grading, crowning and filling with gravel, if necessary. Damages will be assessed if grading/repair does not occur.

4.2.4 - Grading (10/16)

For completion of the sale, state forest roads must be graded. In general, this will require a road grader or bulldozer to shape up the roads after forest products have been hauled off site. This includes cleaning of drainage areas, grading, crowning and filling with gravel, if necessary. The grading equipment to be used must be approved by the Unit Manager or his/her representative.

4.4 - Access

4.4.1 - Private property access (3/11)

Permission for access across private land is the responsibility of the Purchaser.

4.4.2 - Alternate route on private property (2/04)

It is the Purchaser's responsibility to obtain access across private land for any routes other than the route shown on the Timber Sale Map.

5 - Operations

5.1 - Notification

5.1.1 - Pre-sale Conference (10/16)

A pre-sale conference on site or at the office between the Purchaser and Sale Administrator is required prior to beginning any operations to determine landing and road locations.

5.2 - Conduct of Operations

5.2.2 - Hazard Trees/Snags

5.2.2.1 - Den Trees (10/16)

Obvious hollow and/or den trees shall be protected and left standing unless they are a safety hazard.

5.2.17 - Timber Mats and Interlocking Composite Mats (5/23)

Some roads or skid trails may require extra protection such as that afforded by timber mats, interlocking composite mats, or another approved system. If available, mats may be borrowed from the DNR. A Timber Sale Contract Amendment will be used to document the Purchaser's use of the DNR's mats. Contact the Sale Administrator regarding availability and pick-up. Timber mats are available from various field offices. Composite mats are only available from the Grayling field office and the Marquette ICC. The Purchaser is responsible for picking up and hauling the mats to and from the site. The composite mats

will require DNR staff onsite for installation and removal. Contact the Sale Administrator to schedule at least 5 days before desired install/removal date. All mats must be cleaned prior to drop off. This may include, but is not limited to, power washing and brushing to remove mud and debris. A charge of \$700.00 per timber mat and \$2,000.00 per composite mat will be assessed for all damaged or non-returned mats. Damage for the crane/timber mats is defined as three or more broken cants. Damage for the composite mats is defined as cracked or broken mats.

5.2.30 - Landing/Road Topsoil Protection (1/25)

Topsoil on landings and new roads must be removed, stockpiled, and saved. Upon completion of the timber sale, soil must be evenly distributed back over the area for revegetation.

5.2.32 - Decking/Landing Restoration (9/13)

All decking and landing areas must have the surface area restored to a condition equal to or better than before. This is to ensure the proper regeneration of the stand. Wood debris, chips and "cookies" from trimmings must be removed or scattered away from landing and loading areas and may not be windrowed on the edge.

5.2.37 - No Decking Areas (12/08)

No decking is allowed near RMZs, streams, wetlands, or vernal ponds.

5.2.38 - No Decking Against Live Trees (2/04)

Cut products may not be decked against unmarked or designated leave trees.

5.2.41 - Snowmobile Trail Protection (9/11)

The snowmobile trail and is shown on the Timber Sale Map. Do not cut or damage posts with orange trail markers or traffic control signs. If the trail road is to be used for hauling during the snowmobile season, then a snow-covered base must be left on the trail.

5.3 - Stream Protection

5.3.1 - Operating Near Stream (1/25)

No tracked or wheeled vehicles shall be operated within 50 feet of any creek, stream, river, and/or intermittent creek.

5.3.2 - Parking Equipment Near Water (10/23)

Within Payment Unit(s) 1 and 2, the parking of or storage of equipment is prohibited within 100 feet of water bodies or ground water supplies. All equipment, when not in use for harvest operations, must be parked a minimum of 100 feet away from water sources (streams, rivers, lakes, ponds, vernal pools, ground water sources) and 50 feet away from slopes leading to water sources and/or riparian areas. This restriction is for preventing unforeseen oil and/or fluid leaks from contaminating water bodies and/or ground water supplies.

5.4 - Soil Protection

5.4.1 - Rutting Restriction, General (7/16)

Operations are to cease immediately if equipment and weather conditions result in rutting of roads and/or skid trails which are 12 inches or greater in depth and 50 feet in length. Operations are to cease immediately if equipment and weather conditions result in rutting of roads which are 12 inches or greater in depth and 50 feet in length. The Unit Manager or his/her representative may restrict hauling and/or skidding if ruts exceed the specified depth. With the Unit Manager or his/her representative's approval, the Purchaser may return to the area when the risk of rutting has decreased.

5.4.2 - Skid Trails (2/04)

Skid trails up and down slopes should be avoided. If, however, this is unavoidable, these trails will be left in a non-erodible condition using water bars, logs, and slash. Placing of slash on these skid trails while logging is ongoing may alleviate need for any further action. At the direction of the Sale Administrator, seed, fertilizer, and mulch may also be required.

5.4.4 - Slope Protection (9/19)

Skid trails and roads on slopes shall be water barred with slash and stumps as soon as use is complete to prevent erosion.

5.4.6 - Wet Area Protection (5/10)

No harvesting operations, including skidding and felling, are to take place within vernal pond areas or drainages if found during harvest activities. When harvesting occurs, there should be no disturbance to the vernal pond depression. All equipment, trees and tops should be kept out of this area. Within 100 feet of the pond, equipment should only be used when the soil is in a dry or frozen condition. Care must be taken by the Purchaser to identify and avoid operating in these areas of the timber sale.

5.4.7 - Rutting Restriction, Riparian Management Zone (RMZ) (1/25)

Within the Riparian Management Zone (RMZ) operations are to cease immediately if equipment and weather conditions result in rutting of roads and skid trails which are six (6) inches or greater in depth and 25 feet in length. The Unit Manager or his/her representative may restrict hauling and/or skidding if ruts exceed the specified depth. With the Unit Manager or his/her representative's approval, the Purchaser may return to the area when the risk of rutting has decreased.

5.8 - Protection of Endangered Species

5.8.5 - Protection of Raptor Nests (3/13)

All trees with raptor nests will be protected if found during harvesting operations. Notification will be made to the Unit Manager or his/her representative who will notify the Wildlife Biologist so an onsite evaluation and recommendation can be made, if necessary.

6 - Safety and Fire Prevention

6.2 - Signing

6.2.1 - Road Posting (10/20)

The Purchaser is responsible for posting and maintaining caution signs on County Road 414 and/or Chris Brown Lake Road prior to beginning operations. The road must be posted at appropriate distances from the Sale Area to warn of logging activity and truck traffic. Signs must be removed when harvest operations are suspended or completed. The Purchaser will provide these signs.

6.2.2 - Snowmobile Trail Posting (10/20)

The Purchaser is responsible for posting and maintaining caution signs on snowmobile trail if used during the season prior to beginning operations during the snowmobile season (approximately December 1 to March 31). The trail must be posted along County Road 414 to warn of logging activity and truck traffic. Signs must be removed when harvest operations are suspended or completed. The DNR will provide these signs.



TIMBER SALE MAP

This information provided by authority of Part 525, 1994 PA 451, as amended.

Sale Number

42-017-25

Date

09/25/2025

Forest Management Unit

Newberry Mgt Unit

County

Luce

Mapped By:

Payment

Cruised By:

Green Timber Forestry

Scale

1:21,000

Page

1

Of

1

Township 49N Range 10W Section(s) and Subdivision(s)

Sec. 27 SWNE,N1/2SW,N1/2SE; Sec. 33 NESE,S1/2SE; Sec. 34 S1/2NW,NE,SW,SE; Sec. 35 S1/2NW,S1/2NE,N1/2SW,SES,SE;

Cover Type

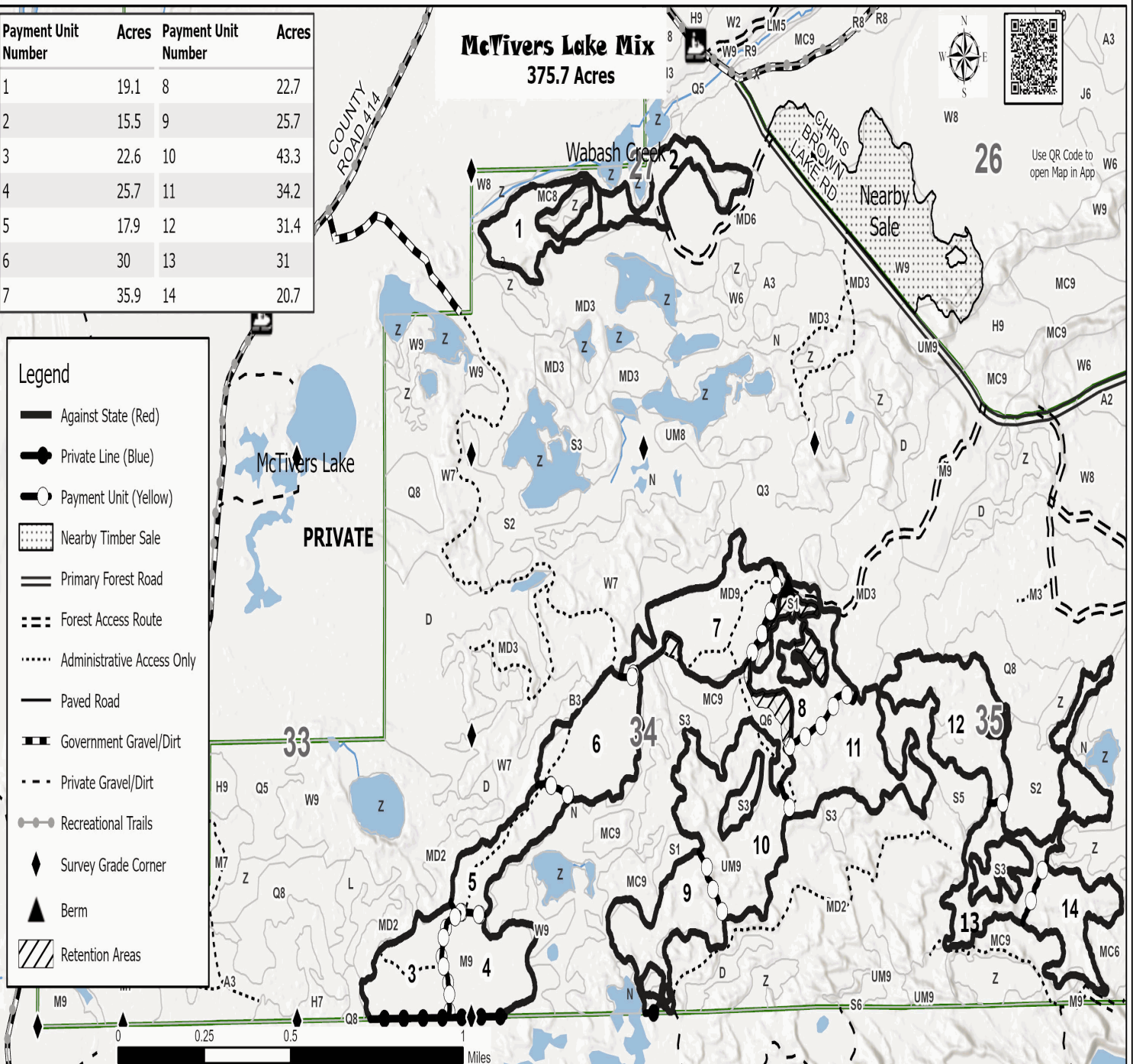
A = Aspen	J = Jack Pine	O = Oak	U = Upland Brush
B = Paper Birch	K = Rock	P = Lowland Poplar	UM = Upland Mix Forest
C = Cedar	L = Lowland Brush	Q = Mixed Swamp Conifer	V = Bog or Marsh
D = Treed Bog	LM = Lowland Mix Forest	R = Red Pine	W = White Pine
E = Swamp Hardwoods	M = Maple, Beech, Birch	S = Black Spruce	X = Non Stocked
F = Spruce/Fir	MC = Mixed Conifer	T = Tamarack	Y = Sand
G = Grass	MD = Mixed Deciduous	Z = Water	
H = Hemlock	N = Marsh		

Density

0 = Non Stocked	5 = Pole Timber Medium
1 = Seedling Sapling Poor	6 = Pole Timber Well
2 = Seedling Sapling Medium	7 = Saw Timber Poor
3 = Seedling Sapling Well	8 = Saw Timber Medium
4 = Pole Timber Poor	9 = Saw Timber Well

Payment Unit Number	Acres	Payment Unit Number	Acres
1	19.1	8	22.7
2	15.5	9	25.7
3	22.6	10	43.3
4	25.7	11	34.2
5	17.9	12	31.4
6	30	13	31
7	35.9	14	20.7

McTivers Lake Mix 375.7 Acres



TIMBER SALE INFORMATION

Shamrock Jack (42-018-25)

T49N, R10W, SEC. 36.

Luce County (Advertised Price \$43,448.25)

SALE NOTE: The Purchaser is responsible for posting and maintaining caution signs on County Road 414, Chris Brown Lake, and Shamrock Roads prior to beginning operations.

A timber sale contract for this lump sum, sealed bid timber sale will be awarded to the responsible bidder offering the highest sealed bid price. All units of volume listed below were estimated using the Inventory Manager computer program and the new Michigan taper model. Bids must be at or above the following advertised price for each product and species:

<u>PRODUCTS & SPECIES</u>	<u>ESTIMATED UNITS*</u>	<u>ADVERTISED PRICE</u>
Sawtimber		
Red Maple	0.9 MBF	\$ 34.00 / MBF
Pulpwood		
Balsam Fir	109 Cords	\$ 4.50 / Cord
Jack Pine	1,096 Cords	\$ 14.25 / Cord
Mixed Aspen	370 Cords	\$ 12.00 / Cord
Mixed Hardwood	443 Cords	\$ 6.35 / Cord
Mixed Spruce	69 Cords	\$ 3.00 / Cord
N. White Cedar	5 Cords	\$ 2.40 / Cord
Red Pine	100 Cords	\$ 48.35 / Cord
White Pine	1,266 Cords	\$ 11.85 / Cord

* The total volume is statistically estimated within plus (+) or minus (-) 12.83 percent. There are an estimated 3,462 cords on this timber sale, plus or minus 444 cords at the 95% confidence level. The estimated units are final and not subject to adjustment. Prospective bidders are urged to examine this timber and to make their own estimates of quantity and quality.

BOND AND PAYMENT SCHEDULE:

1. A bond in the amount of \$2,172.00 to insure faithful performance of the conditions of the contract will be deposited by the successful bidder within 21 days of the sale award.
2. Cutting in any sale or unit without the required advance payment would be considered a trespass.
3. Total payment must be paid in advance or according to the following schedule :
 - (a) Ten percent (10%) of the sale value must be paid within 21 days of the sale award.
 - (b) The 10% down payment will be credited towards the first unit cut.
 - (c) Payment for each of the following units must be made before cutting begins in that unit:

PAYMENT UNIT NUMBER	PERCENT OF TOTAL SALE VALUE
01	16.2%
02	10.3%
03	9.8%
04	12.1%
05	23.9%
06	17.7%
07	10.0%
4. If no cutting takes place, the 10% down payment will not be refunded.
5. Operations on the contract issued will terminate on 12/31/2029.

SALE STATISTICS

Volumes were calculated in cubic feet using the Michigan taper model. Cubic foot volume includes all wood inside bark for the product indicated. For display purposes, cubic feet were converted to cords and MBF using a simple conversion factor, e.g. 79 cubic feet per cord and 185 cubic feet per MBF. The cubic foot volumes are precise; the cords and MBF volumes are not. Cubic foot volume cannot be directly converted to cords or boards with precision.

SALE VOLUMES

The total estimated sale volume may not equal the sum of the species/products due to the nature of statistical calculations associated with double sampling methodology.

VOLUME			STATISTICAL RANGE IN CORDS	
TOTAL CUBIC FEET	TOTAL CORDS	PERCENT ERROR	MINIMUM	MAXIMUM
273,535	3,462	12.83%	3,018	3,907

VDU VOLUMES

A VDU is a Volume Determination Unit. Volumes and their associated statistics are calculated at the VDU level and summarized to the sale level. There is often a one to one relationship between a VDU and a Payment Unit, but not always, depending on the cruise design. Refer to the VDU TO PAYMENT UNIT table.

	VOLUME			RANGE IN CORDS	
VDU	TOTAL CUBIC FEET	TOTAL CORDS	PERCENT ERROR	MINIMUM	MAXIMUM
78	149,306	1,890	19.32%	1,525	2,255
80	97,896	1,239	17.21%	1,026	1,453
81	26,333	333	44.83%	184	483
TOTAL:	273,535	3,462		2,735	4,190

VDU TO PAYMENT UNIT

When a VDU is associated with more than one Payment Unit (PU), the VDU volumes are assigned to the PU based on acres of the VDU within the PU.

VDU	VDU ACRES	PU	PU ACRES
TOTAL:			

DESCRIPTION OF TIMBER BY PAYMENT UNIT (PU)

PU	MARKET GROUP	PRODUCT	QUANTITY	UNIT	ACRES	ADVERTISE PRICE
1	Red Maple	Sawtimber	0.3	MBF	25.7	\$7,030.35
	Balsam Fir	Pulpwood	32	Cords		
	Jack Pine		4	Cords		
	Mixed Aspen		109	Cords		
	<i>B. T. Aspen</i>		105	Cords		
	<i>Quaking Aspen</i>		4	Cords		
	Mixed Hardwood		144	Cords		
	<i>Beech</i>		6	Cords		
	<i>Red Maple</i>		133	Cords		
	<i>Yellow Birch</i>		5	Cords		
	Mixed Spruce		23	Cords		
	<i>Black Spruce</i>		2	Cords		
	<i>White Spruce</i>		21	Cords		
	N. White Cedar		2	Cords		
	Red Pine		21	Cords		
	White Pine		296	Cords		
	2	Red Maple	Sawtimber	0.2		
Balsam Fir		Pulpwood	21	Cords		
Jack Pine			3	Cords		
Mixed Aspen			70	Cords		
<i>B. T. Aspen</i>			67	Cords		
<i>Quaking Aspen</i>			3	Cords		
Mixed Hardwood			91	Cords		
<i>Beech</i>			4	Cords		
<i>Red Maple</i>			84	Cords		
<i>Yellow Birch</i>			3	Cords		
Mixed Spruce			15	Cords		
<i>Black Spruce</i>			1	Cords		
<i>White Spruce</i>			14	Cords		
N. White Cedar			1	Cords		
Red Pine			13	Cords		
White Pine			188	Cords		
3		Red Maple	Sawtimber	0.2	MBF	15.6
	Balsam Fir	Pulpwood	20	Cords		
	Jack Pine		3	Cords		
	Mixed Aspen		66	Cords		
	<i>B. T. Aspen</i>		64	Cords		
	<i>Quaking Aspen</i>		2	Cords		
	Mixed Hardwood		87	Cords		
	<i>Beech</i>		4	Cords		
	<i>Red Maple</i>		80	Cords		
	<i>Yellow Birch</i>		3	Cords		
	Mixed Spruce		14	Cords		
	<i>Black Spruce</i>		1	Cords		
	<i>White Spruce</i>		13	Cords		
	N. White Cedar		1	Cords		
	Red Pine		13	Cords		
	White Pine		179	Cords		
	4	Red Maple	Sawtimber	0.2	MBF	
Balsam Fir		Pulpwood	24	Cords		
Jack Pine			3	Cords		
Mixed Aspen			82	Cords		
<i>B. T. Aspen</i>			79	Cords		
<i>Quaking Aspen</i>			3	Cords		
Mixed Hardwood			108	Cords		
<i>Beech</i>			5	Cords		

DESCRIPTION OF TIMBER BY PAYMENT UNIT (PU), CON'T

PU	MARKET GROUP	PRODUCT	QUANTITY	UNIT	ACRES	ADVERTISE PRICE
4 con't	<i>Red Maple</i>	<i>Pulpwood</i>	99	<i>Cords</i>		
	<i>Yellow Birch</i>		4	<i>Cords</i>		
	Mixed Spruce		17	<i>Cords</i>		
	<i>Black Spruce</i>		1	<i>Cords</i>		
	<i>White Spruce</i>		16	<i>Cords</i>		
	N. White Cedar		1	<i>Cords</i>		
	Red Pine		16	<i>Cords</i>		
	White Pine		220	<i>Cords</i>		
5	Balsam Fir	Pulpwood	1	<i>Cords</i>	32.0	\$10,387.05
	Jack Pine		591	<i>Cords</i>		
	Mixed Aspen		21	<i>Cords</i>		
	<i>B. T. Aspen</i>		3	<i>Cords</i>		
	<i>Quaking Aspen</i>		18	<i>Cords</i>		
	Red Pine		15	<i>Cords</i>		
	White Pine		83	<i>Cords</i>		
6	Balsam Fir	Pulpwood	1	<i>Cords</i>	23.7	\$7,692.70
	Jack Pine		438	<i>Cords</i>		
	Mixed Aspen		16	<i>Cords</i>		
	<i>B. T. Aspen</i>		2	<i>Cords</i>		
	<i>Quaking Aspen</i>		14	<i>Cords</i>		
	Red Pine		11	<i>Cords</i>		
	White Pine		61	<i>Cords</i>		
	7		Balsam Fir	Pulpwood		
Jack Pine		54	<i>Cords</i>			
Mixed Aspen		6	<i>Cords</i>			
<i>B. T. Aspen</i>		6	<i>Cords</i>			
Mixed Hardwood		13	<i>Cords</i>			
<i>Red Maple</i>		13	<i>Cords</i>			
Red Pine		11	<i>Cords</i>			
White Pine		239	<i>Cords</i>			
TOTAL:			0.9	MBF		
TOTAL:			3,458	Cords		

Sale Specific Conditions & Requirements

Sale Name: Shamrock Jack

Sale Number: 42-018-25 Seq#: 1

1 - Sale Area

1.2 - Boundaries

1.2.1 - Painted Boundaries (9/19)

The sale boundary and Payment Unit boundaries are marked and identified by blue, red and yellow paint. Exterior sale boundary lines against private property are marked with blue paint. Exterior sale boundary lines against state are marked with red paint. Interior Payment Unit boundaries are marked with yellow paint. Retention patches are marked with red paint; no harvesting activities may occur within these areas. The painted boundary line trees are not Included Timber. Yellow painted trees designating an interior Payment Unit boundary are only to be cut when all surrounding Payment Units have been paid.

2 - Timber Specifications

2.1 - Included Timber

2.1.1 - Clearcut Unit(s) with Unmerchantable Trees (6/14)

Within Payment Unit(s) 5 and 6, cut all trees that are two (2) inches or more at DBH.

2.1.7 - Leave Tree Marked Unit(s) (6/14)

Within Payment Unit(s) 1, 2, 3, 4, 7, all trees, which meet minimum piece specifications in 2.2 Utilization, are designated for cutting, except do not cut trees marked with green paint above and below stump height.

In addition:

Within Payment Units 1 - 4, do not cut any hemlock. Do not cut any white pine over 20 inches.

Within Unit 7, do not cut any hemlock. Do not cut any red or white pine over 20 inches.

2.2 - Utilization

2.2.3 - Stump Heights (12/24)

Stump heights within Payment Units 5 and 6 shall not exceed six (6) inches for all trees. This is in order to facilitate cultivation operations. A written waiver of this requirement may be obtained if wet summer weather makes winter logging necessary.

4 - Transportation

4.1 - Construction

4.1.6 - Road Construction (4/24)

Construction of new roads or improvements of existing roads shall be done in such a way as to minimize the environmental and visual impacts. Merchantable trees shall be cut and utilized unless otherwise directed. Non-merchantable trees shall be severed and laid flat on the ground. Slash shall be scattered, not left in windrows, and kept a minimum of 10 feet back from the road edge. Stumps shall be set upright, not left on edge, and be moved at least 10 feet away from the road edge. Disturbed soil shall be feathered into the woods and not left in berms or windrows.

4.1.7 - Road Closure (10/11)

All new roads will be closed upon completion of the sale.

4.2 - Maintenance

4.2.1 - Hauling Restriction (12/08)

Hauling may be restricted on forest roads (Chris Brown Lake and Shamrock Rd.) by the Unit Manager or his/her representative. The restriction may occur due to weather conditions and truck traffic that contribute to road deterioration.

4.2.3 - Road maintenance (8/13)

The following road maintenance is required on Chris Brown Lake and Shamrock Road: The road must be maintained and graded. This includes cleaning of drainage areas, grading, crowning and filling with gravel, if necessary. Damages will be

assessed if grading/repair does not occur. In addition, place 150 yards of gravel along portion of the road that have sand blow outs or areas where blowouts may appear. Gravel must be acceptable before use. Contact Sale Administrator or Unit Manager for possible use of any gravel that may be available.

4.2.4 - Grading (10/16)

For completion of the sale, state forest roads must be graded. In general, this will require a road grader or bulldozer to shape up the roads after forest products have been hauled off site. This includes cleaning of drainage areas, grading, crowning and filling with gravel, if necessary. The grading equipment to be used must be approved by the Unit Manager or his/her representative.

4.2.5 - Two Wheel Drive Condition (2/04)

All existing trail roads on and adjacent to the Sale Area must be passable by two-wheel drive traffic for the duration of the sale.

5 - Operations

5.2 - Conduct of Operations

5.2.1 - Slash

5.2.1.8 - Slash Height (12/08)

No slash or tree tops may exceed 24 inches in height. This applies to Payment Units 5 and 6.

5.2.1.11 - Slash for Reforestation (3/21)

To facilitate reforestation, the Sale Area or Payment Units 5 and 6 shall be left with slash evenly distributed. Bunched tops within the cutting area shall be broken up and scattered. Stumps shall be cut low to the ground. Processing sites shall not be left with a compacted layer of slash; tops from these sites shall be hauled back into the cut area and scattered.

5.2.2 - Hazard Trees/Snags

5.2.2.1 - Den Trees (10/16)

Obvious hollow and/or den trees shall be protected and left standing unless they are a safety hazard.

5.2.3 - Operating Restrictions

5.2.3.6 - Bark Beetle Restriction (1/25)

In the event drought creates a high risk of pine bark beetle infestation, pine is not to be cut during the period March 1 through July 1, unless all portions of trees greater than two (2) inches in diameter are removed from the Sale Area, reduced to chips, or treated to the satisfaction of the Unit Manager or his/her representative, within 15 days of being severed from the stump. Pine log decks, pulpwood piles and treetops that are piled for chipping in the fall or winter within a 1/4 mile of susceptible sites must be removed before March 15. Residual slash must not be placed in piles or rows and must be spread over the site for quick drying. The Department of Natural Resources will exercise this specification if the risk of damage warrants.

5.2.30 - Landing/Road Topsoil Protection (1/25)

Topsoil must be removed, stockpiled, and saved. Upon completion of the timber sale, soil must be evenly distributed back over the area for revegetation.

5.2.32 - Decking/Landing Restoration (9/13)

All decking and landing areas must have the surface area restored to a condition equal to or better than before. This is to ensure the proper regeneration of the stand. Wood debris, chips and "cookies" from trimmings must be removed or scattered away from landing and loading areas and may not be windrowed on the edge.

5.2.38 - No Decking Against Live Trees (2/04)

Cut products may not be decked against unmarked or designated leave trees.

5.4 - Soil Protection

5.4.1 - Rutting Restriction, General (7/16)

Operations are to cease immediately if equipment and weather conditions result in rutting of roads and/or skid trails which are 12 inches or greater in depth and 50 feet in length. In addition, operations are to cease immediately if equipment and weather conditions result in rutting on skid trails which are 12 inches or greater in depth and 50 feet in length. The Unit Manager or his/her representative may restrict hauling and/or skidding if ruts exceed the specified depth. With the Unit Manager or his/her representative's approval, the Purchaser may return to the area when the risk of rutting has decreased.

5.4.6 - Wet Area Protection (5/10)

No harvesting operations, including skidding and felling, are to take place within RMZs, drainages holding water, or any vernal ponds that may be found during harvesting. When harvesting occurs, there should be no disturbance to the vernal pond depression. All equipment, trees and tops should be kept out of this area. Within 100 feet of the pond, equipment should only be used when the soil is in a dry or frozen condition. Care must be taken by the Purchaser to identify and avoid operating in these areas of the timber sale.

5.8 - Protection of Endangered Species

5.8.5 - Protection of Raptor Nests (3/13)

All trees with raptor nests will be protected if found during harvesting operations. Notification will be made to the Unit Manager or his/her representative who will notify the Wildlife Biologist so an onsite evaluation and recommendation can be made, if necessary.

6 - Safety and Fire Prevention

6.2 - Signing

6.2.1 - Road Posting (10/20)

The Purchaser is responsible for posting and maintaining caution signs on County Road 414, Chris Brown Lake, and Shamrock Roads prior to beginning operations. The road must be posted at appropriate distances from the Sale Area to warn of logging activity and truck traffic. Signs must be removed when harvest operations are suspended or completed. The Purchaser will provide these signs.

6.2.2 - Snowmobile Trail Posting (10/20)

The Purchaser is responsible for posting and maintaining caution signs on snowmobile trail prior to beginning operations during the snowmobile season (approximately December 1 to March 31). The trail must be posted at appropriate distances from the Sale Area if the trail is used to warn of logging activity and truck traffic. Signs must be removed when harvest operations are suspended or completed. The DNR will provide these signs.

7 - Other Conditions

7.3 - Contract Modifications

7.3.3 - Modification for Reforestation (8/05)

When contractual work of Purchaser has been accepted for any Payment Unit identified on Sale Area Map, Payment Unit will be eliminated from the Sale Area on written notice so that reforestation operations can begin.



TIMBER SALE MAP

This information provided by authority of Part 525, 1994 PA 451, as amended.

Sale Number
42-018-25

Date
09/09/2025

Forest Management Unit
Newberry Mgt Unit

County
Luce

Mapped By: Payment
Cruised By: Green Timber Forestry

Scale
1:15,840

Page
1

Of
1

Township 49N Range 10W Section(s) and Subdivision(s) Sec. 36 SENW,SWNE,SW,SE;

Cover Type

A = Aspen	J = Jack Pine	O = Oak	U = Upland Brush
B = Paper Birch	K = Rock	P = Lowland Poplar	UM = Upland Mix Forest
C = Cedar	L = Lowland Brush	Q = Mixed Swamp Conifer	V = Bog or Marsh
D = Treed Bog	LM = Lowland Mix Forest	R = Red Pine	W = White Pine
E = Swamp Hardwoods	M = Maple, Beech, Birch	S = Black Spruce	X = Non Stocked
F = Spruce/Fir	MC = Mixed Conifer	T = Tamarack	Y = Sand
G = Grass	MD = Mixed Deciduous	Z = Water	
H = Hemlock	N = Marsh		

Density

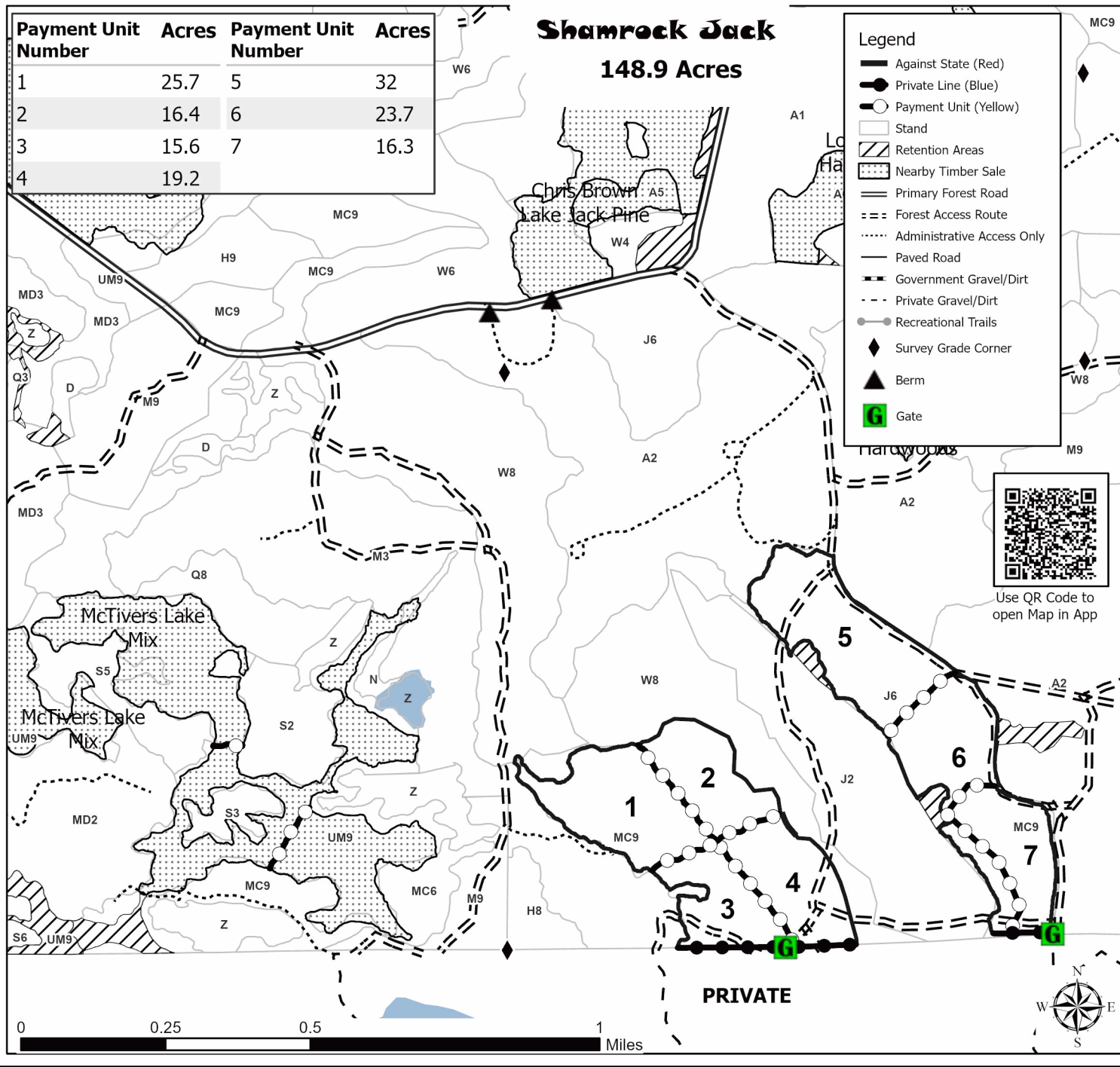
0 = Non Stocked	5 = Pole Timber Medium
1 = Seedling Sapling Poor	6 = Pole Timber Well
2 = Seedling Sapling Medium	7 = Saw Timber Poor
3 = Seedling Sapling Well	8 = Saw Timber Medium
4 = Pole Timber Poor	9 = Saw Timber Well

Payment Unit Number	Acres	Payment Unit Number	Acres
1	25.7	5	32
2	16.4	6	23.7
3	15.6	7	16.3
4	19.2		

Shamrock Jack 148.9 Acres

Legend

- Against State (Red)
- Private Line (Blue)
- Payment Unit (Yellow)
- Stand
- Retention Areas
- Nearby Timber Sale
- Primary Forest Road
- Forest Access Route
- Administrative Access Only
- Paved Road
- Government Gravel/Dirt
- Private Gravel/Dirt
- Recreational Trails
- Survey Grade Corner
- Berm
- Gate



McTivers Lake Mix (42-017-25)

T49N, R10W, SEC. 27; T49N, R10W, SEC. 33; T49N, R10W, SEC. 34; T49N,

In response to the notice of sale to be held 3:00 p.m. (local time) on May 21, 2026, I am hereby submitting my sealed bid (firm offer) for the following forest products to be cut. Bids for individual species must be at or above the advertised price. All non-responsive bid forms may be rejected.

<u>PRODUCTS & SPECIES</u>	<u>ESTIMATED VOLUME*</u>	<u>ADVERTISED PRICE</u>	<u>BID PRICE/UNIT</u>
Sawtimber			
Beech	1.7 MBF	\$ 127.00/MBF	\$ _____
Red Maple	108.7 MBF	\$ 34.00/MBF	\$ _____
Sugar Maple	27.4 MBF	\$ 323.00/MBF	\$ _____
Yellow Birch	5.0 MBF	\$ 51.00/MBF	\$ _____
Pulpwood			
Balsam Fir	330 Cords	\$ 4.50/Cord	\$ _____
Mixed Aspen	571 Cords	\$ 12.00/Cord	\$ _____
Mixed Hardwood	3,092 Cords	\$ 6.35/Cord	\$ _____
Mixed Spruce	899 Cords	\$ 3.00/Cord	\$ _____
N. White Cedar	243 Cords	\$ 2.40/Cord	\$ _____
Red Pine	262 Cords	\$ 48.35/Cord	\$ _____
Tamarack	21 Cords	\$ 3.20/Cord	\$ _____
White Pine	2,797 Cords	\$ 11.85/Cord	\$ _____

*The volumes are statistically estimated within plus (+) or minus (-) 8.35 percent at 95% confidence level. These estimated volumes are final and not subject to adjustment. Prospective bidders are urged to examine this timber and to make their own estimates of quantity and quality.

I understand that any or all bids may be rejected. All bids must be signed and all bid items must be bid or the bid form may be rejected. I also understand that consideration and awarding a contract will be based upon my past performance and ability to complete the contract based upon equipment and staffing subject to my control.

FEDERAL ID: ____ - ____ - ____ or SOCIAL SECURITY NUMBER: ____ - ____ - ____

Company or individual bidding: _____

Company representative's name: _____

Address: _____

City: _____ State: _____ Zip: _____

IF AVAILABLE, PLEASE PLACE THE PERSONALIZED LABEL FROM YOUR PROSPECTUS IN THE ABOVE BOX.

Individual or company representative's signature: _____ Date: _____

Phone number : _____ Email (optional): _____

THE WINNING BIDDER MUST COMPLETE THE VERIFICATION OF WORKER'S DISABILITY COMPENSATION ACT COMPLIANCE (ON REVERSE SIDE IF DOUBLE SIDED) WITHIN 21 DAYS OF SALE AWARD DATE



FOR DEPARTMENT USE ONLY	
Sale Number (XX - XXX - XX - XX)	
Forest Management Unit:	

TIMBER SALE VERIFICATION OF WORKER'S DISABILITY COMPENSATION ACT COMPLIANCE

As required by Act 317, P.A. 1969 (Worker's Compensation) and
Part 5 of Act 451 of 1994, as amended.

VERIFICATION OF WORKER'S DISABILITY COMPENSATION ACT COMPLIANCE

- This verification must be completed and submitted within 21 days of contract award and prior to the issuance of the timber sale contract.
- In addition, if boxes 2B or 2C are checked, then Notice of Exclusion or Certificate of Insurance must be submitted within twenty-one (21) days of the contract award and prior to the issuance of the timber sale contract.
- All information must be typed or printed except for written signatures.

Please Check Appropriate Categories:

1. My business is organized as (you **must** check one of the boxes below):
 - A. Sole Proprietorship (individual)
 - B. Partnership
 - C. Corporation
2. You **must** check one of the boxes below:
 - A. I certify my business is a sole proprietorship and it has no employees but the sole proprietor. I am not subject to the Worker's Compensation Laws.
 - B. I certify my business has satisfied its obligation to the Worker's Compensation Act through the use of an approved Notice of Exclusion (BWC-337, Rev. 5/96). I will provide a copy of the Notice of Exclusion within 21 days of the contract award. (For questions or a copy of the BWC-337, please call the Worker's Compensation Bureau at 517-322-1195).
 - C. I certify my business has a Worker's Compensation Policy. I will provide an original Certificate of Insurance within twenty-one (21) days of the contract award.
3. If you have checked item 2(A) or 2(B), you **must** indicate the number of **both** full-time and part-time employees, other than yourself, including family members and active partners (if none, you must enter "0").

_____ Full-time Employees

_____ Part-time Employees

Name of Business		Federal ID (or) Social Security No.	
Address		Telephone ()	
City	State	ZIP	

I hereby certify that the above information is true and correct. I agree to notify the Michigan DNR of any changes that occur in factors affecting my coverage during any of my present and future operations.

Signature of Owner or Authorized Representative

Title

Date

Please complete the "SEALED BID" information on the next page

Shamrock Jack (42-018-25)
T49N, R10W, SEC. 36; Luce COUNTY

In response to the notice of sale to be held 3:00 p.m. (local time) on May 21, 2026, I am hereby submitting my sealed bid (firm offer) for the following forest products to be cut. Bids for individual species must be at or above the advertised price. All non-responsive bid forms may be rejected.

<u>PRODUCTS & SPECIES</u>	<u>ESTIMATED VOLUME*</u>	<u>ADVERTISED PRICE</u>	<u>BID PRICE/UNIT</u>
Sawtimber			
Red Maple	0.9 MBF	\$ 34.00/MBF	\$ _____
Pulpwood			
Balsam Fir	109 Cords	\$ 4.50/Cord	\$ _____
Jack Pine	1,096 Cords	\$ 14.25/Cord	\$ _____
Mixed Aspen	370 Cords	\$ 12.00/Cord	\$ _____
Mixed Hardwood	443 Cords	\$ 6.35/Cord	\$ _____
Mixed Spruce	69 Cords	\$ 3.00/Cord	\$ _____
N. White Cedar	5 Cords	\$ 2.40/Cord	\$ _____
Red Pine	100 Cords	\$ 48.35/Cord	\$ _____
White Pine	1,266 Cords	\$ 11.85/Cord	\$ _____

*The volumes are statistically estimated within plus (+) or minus (-) 12.83 percent at 95% confidence level. These estimated volumes are final and not subject to adjustment. Prospective bidders are urged to examine this timber and to make their own estimates of quantity and quality.

I understand that any or all bids may be rejected. All bids must be signed and all bid items must be bid or the bid form may be rejected. I also understand that consideration and awarding a contract will be based upon my past performance and ability to complete the contract based upon equipment and staffing subject to my control.

FEDERAL ID: ____ - ____ - ____ or SOCIAL SECURITY NUMBER: ____ - ____ - ____

Company or individual bidding: _____

Company representative's name: _____

Address: _____

City: _____ State: _____ Zip: _____

IF AVAILABLE, PLEASE PLACE THE PERSONALIZED LABEL FROM YOUR PROSPECTUS IN THE ABOVE BOX.

Individual or company representative's signature: _____ Date: _____

Phone number : _____ Email (optional): _____

THE WINNING BIDDER MUST COMPLETE THE VERIFICATION OF WORKER'S DISABILITY COMPENSATION ACT COMPLIANCE (ON REVERSE SIDE IF DOUBLE SIDED) WITHIN 21 DAYS OF SALE AWARD DATE



TIMBER SALE VERIFICATION OF WORKER'S DISABILITY COMPENSATION ACT COMPLIANCE

As required by Act 317, P.A. 1969 (Worker's Compensation) and
Part 5 of Act 451 of 1994, as amended.

FOR DEPARTMENT USE ONLY	
Sale Number (XX - XXX - XX - XX)	
Forest Management Unit:	

VERIFICATION OF WORKER'S DISABILITY COMPENSATION ACT COMPLIANCE

- This verification must be completed and submitted within 21 days of contract award and prior to the issuance of the timber sale contract.
- In addition, if boxes 2B or 2C are checked, then Notice of Exclusion or Certificate of Insurance must be submitted within twenty-one (21) days of the contract award and prior to the issuance of the timber sale contract.
- All information must be typed or printed except for written signatures.

Please Check Appropriate Categories:

1. My business is organized as (you **must** check one of the boxes below):
 - A. Sole Proprietorship (individual)
 - B. Partnership
 - C. Corporation
2. You **must** check one of the boxes below:
 - A. I certify my business is a sole proprietorship and it has no employees but the sole proprietor. I am not subject to the Worker's Compensation Laws.
 - B. I certify my business has satisfied its obligation to the Worker's Compensation Act through the use of an approved Notice of Exclusion (BWC-337, Rev. 5/96). I will provide a copy of the Notice of Exclusion within 21 days of the contract award. (For questions or a copy of the BWC-337, please call the Worker's Compensation Bureau at 517-322-1195).
 - C. I certify my business has a Worker's Compensation Policy. I will provide an original Certificate of Insurance within twenty-one (21) days of the contract award.
3. If you have checked item 2(A) or 2(B), you **must** indicate the number of **both** full-time and part-time employees, other than yourself, including family members and active partners (if none, you must enter "0").

_____ Full-time Employees

_____ Part-time Employees

Name of Business		Federal ID (or) Social Security No.	
Address		Telephone ()	
City	State	ZIP	

I hereby certify that the above information is true and correct. I agree to notify the Michigan DNR of any changes that occur in factors affecting my coverage during any of my present and future operations.

Signature of Owner or Authorized Representative

Title

Date

Please complete the "SEALED BID" information on the next page