



**DEPARTMENT OF NATURAL RESOURCES  
STATE OF MICHIGAN  
TIMBER SALE PROSPECTUS #7800**

SCHEDULED SALE DATE AND TIME: 3:00 p.m. (local time) on June 18, 2026.

LOCATION: NEWBERRY MGMT UNIT, 5666 S STATE HWY M 123, NEWBERRY, MI 49868.

PROSPECTUS NOTE: The bidder is advised to inspect the sale area and review the location, estimated volumes, operating costs and contract terms of proposed sales. Please be aware that some landowners may request 60 days or more notice for access across their land.

Notice is hereby given that bids will be received by the Unit Manager, NEWBERRY MANAGEMENT UNIT, for certain timber on the following described lands:

Don't Pave It Pine (42-005-25) / T49N, R10W, SEC. 19, NWNW,S1/2NW.  
T49N, R11W, SEC. 12, SWSE.  
T49N, R11W, SEC. 13, NENW,SWNW,NE,W1/2SW.  
T49N, R11W, SEC. 14, SENE,E1/2SE.  
T49N, R11W, SEC. 24, SENE.

Luce County, Advertised Price \$120,322.40, 234.8 Acres, Jack Pine, Red Pine.

SALE NOTE: There are ORV and equestrian trails within the Sale Area. See Sale Spec 5.2.40 for restrictions.

A recreation site such as a trail, pathway, or campground is within the sale area or the vicinity. Certain restrictions/specifications may be applicable including time restrictions.

Smiley Pine (42-010-25) / T49N, R12W, SEC. 4 , W1/2NW,NWSW.  
T49N, R12W, SEC. 5 , SENE.  
T49N, R12W, SEC. 6 , NW,NWNE.  
T50N, R12W, SEC. 31, S1/2SW,SWSE.

Luce County, Advertised Price \$32,504.25, 121.9 Acres, Jack Pine.

SALE NOTE: No new roads will be permitted in any Payment Unit. See Sale Spec 4.1.12 for additional information.

The County must be contacted prior to constructing any new back-in spurs leading from the County Road R-O-W. This applies to Payment Unit 1.

It is recommended, but not required, that within Payment Unit(s) 1-6, skidding and hauling occur during the late fall/early winter months because of the sandy roads in the Sale Area and summer tourist traffic on County Road 407 / H58.

The North Country Trail is a hiking trail and is shown on the Timber Sale Map. See Sale Spec 5.2.40 for restrictions.

A recreation site such as a trail, pathway, or campground is within the sale area or the vicinity. Certain restrictions/specifications may be applicable including time restrictions.

## BID INSTRUCTIONS (VER. 10/10/2022):

### 1. Scheduled Bid Location, Date, and Time (2/11)

Bids must be received by the Unit Manager, NEWBERRY OFFICE, 5666 S STATE HWY M 123, NEWBERRY, MI 49868, no later than 3:00 p.m. (local time) on June 18, 2026. For further information concerning this sale, contact Keith Magnusson at 906-291-0120 extension n/a.

### 2. Bidder's Qualifications (10/22)

If all or part of a timber sale was prepared by a private contractor, the contractor and that contractor's company are not permitted to bid on the timber sale. A person must be 18 years of age or older to purchase timber. Permanent employees of the Department of Natural Resources or members of their immediate household may not bid. Former employees, in the permanent or seasonal class, may not bid until 3 months after the last day of active duty. Bids will not be accepted from individuals or companies appearing on the DNR/FRD No-Bid List. This list contains the names of purchasers who previously failed to execute a contract within 21-days or who have a history of poor performance.

### 3. Preparation of Sealed Bids (5/16)

Bid Forms may be completed online thru Michigan DNR Timber Sale Online Bidding (OLB) at [www.michigan.gov/timberbidding](http://www.michigan.gov/timberbidding) or by completing the hardcopy Bid Form found in the Timber Sale Prospectus. Hardcopy Bid Forms shall be manually signed in ink. Registration in OLB is considered your 'signature' for all bids submitted thru that system. Bid prices must be entered for each species and product in the Bid Price column for all material subject to bidding and all fill-in blanks must be completed. If erasures or other changes appear on the hardcopy Bid Form, each erasure or change must be initialed by the person signing the bid.

### 4. Submission of Sealed Bids (5/16)

Bid forms may be obtained from the Unit Manager or thru OLB. Bids may be submitted hardcopy or thru OLB. All hardcopy bids must be submitted on the bid form and in an envelope clearly identified as described in this section. NOTE: Only one bid form per bid envelope. Sealed bids must be submitted to the Unit office designated in the prospectus and must be submitted at or prior to the time established in the prospectus. The envelope should show on the outside (a) the sale name or number and (b) the date and time of bid opening, as shown in the prospectus. Bids received after the time specified in the sale prospectus are late bids and will be rejected.

It is possible for a bidder to submit multiple bids on a single sale. For example, a bid may be submitted hardcopy and a bid may be submitted thru OLB. Or, two bidders from the same company could both submit bids on the same sale. If this were to happen, the State would accept all bids received and award the contract accordingly. All bidding and contractual requirements would apply to all bids received.

### 5. Public Opening of Sealed Bids (7/16)

If conditions permit, the sealed bids will be publicly opened and posted at the time and place set in the prospectus.

If a bidder, present at a bid opening, has submitted bids on more than one sale, that bidder may withdraw their unopened bid envelopes or announce the withdrawal of their online bid after being declared the successful bidder on one sale.

### 6. Award of Contract (1/11)

Award of the contract will be made to the Bidder whose bid, conforming to the prospectus, is most advantageous to the State of Michigan on the basis of total value at rates bid for the estimated quantities. The State reserves the right to reject any bid or waive any minor irregularity in bids received. A written award mailed (or otherwise furnished) to the successful Bidder shall be deemed to result in a binding contract without further action by either party.

### 7. Down Payment (1/11)

The Bidder to whom award is made must make a down payment within 21 days of the sale award. The amount of the down payment will be calculated as shown in the Bond and Payment Schedule of this prospectus. Only cash may be used to meet this requirement.

### 8. Performance Security (1/11)

As guarantee of faithful performance, a cash bond, certificate of deposit, surety bond or irrevocable letter of credit (LOC) is required within 21 days of the sale award. The amount of the performance security is shown in the Bond and

Payment Schedule of this prospectus. If an LOC or surety is used, the coverage must extend for at least 6 months beyond the contract expiration.

#### 9. Worker's Compensation (10/22)

Purchaser shall obtain worker's compensation insurance to cover claims under Michigan's Worker's Disability Compensation Act of 1969 or similar employee benefit act of any other state applicable to an employee. Verification of Worker's Disability Compensation Act Compliance must be completed and submitted within 21 days of contract award and prior to the issuance of the timber sale contract. In addition, if applicable, Notice of Exclusion or Certificate of Insurance must also be submitted.

#### 10. Timber Sale Contract (10/22)

Additional conditions and requirements common to all timber sales are listed on the timber sale contract (R4031) and are available on line at [www.michigan.gov/timber](http://www.michigan.gov/timber). Contact the Unit Manager for additional information or a sample contract. Within 21 days of the date of the award letter, the bidder must sign the contract and provide the required down payment, performance security, and verification of worker's disability compensation. The down payment and performance security shall be in accordance with the provisions of the timber sale contract, in the sums stated in this prospectus. If these actions are not taken, then the Bidder, the Bidder's corporation, and the corporation's principals may not be permitted to bid on State timber sales for a period of 3 months after the first offense, 6 months after the second offense, and 1 year after the third offense. An offense will only be counted against the Bidder for 5 years. In addition, the Bidder certifies that if awarded this contract, the Bidder will complete the timber sale contract in accordance with its terms and any modifications thereof including requirements to purchase, cut, and remove the included timber by the expiration date.

Payment Unit values in the State Forest Timber Sale Contract are calculated based on the advertised value of the Payment Unit as a percentage of the total advertised value of the contract. The advertised value of each Payment Unit is given in the Description of Timber by Payment Unit table on the Timber Sale Information page. For example, if the value of Payment Unit 1 is advertised as \$1,500 and the total Timber Sale value is advertised as \$10,000, the contract price for Payment Unit 1 will be 15% of the total bid price ( $\$1,500/\$10,000 * 100$ ).

#### 11. Disclaimer of Estimates and Bidder's Warranty of Inspection (10/22)

Before submitting this bid, the Bidder is advised and cautioned to inspect the sale area, review the requirements of the sale contract, and take other steps as may be reasonably necessary to ascertain the location, estimated volumes, construction estimates, and operating costs of the proposed sale. Failure to do so will not relieve the Bidder from responsibility for completing the contract.

The Bidder warrants that this bid is submitted solely on the basis of the Bidder's examination and inspection of the quality and quantity of the timber offered for sale and the Bidder's opinion of the value thereof and the costs of recovery. No reliance should be placed on the State of Michigan's estimates of timber quality, quantity or costs of recovery. Bidder further acknowledges that the State of Michigan: (i) expressly disclaims any warranty of fitness of timber for any purpose; (ii) offers this timber as is without any warranty of quality (merchantability) or quantity and (iii) expressly disclaims any warranty as to the quantity or quality of timber sold.

#### 12. Certification and Chain-of-Custody (10/22)

Unless otherwise indicated in the contract under section 7 – Other Conditions of the Sale Specific Conditions & Requirements, the area encompassed by this timber sale is certified to the standards of the Forest Stewardship Council (FSC) - Certificate #SCS-FM/COC-00090N and the Sustainable Forestry Initiative (SFI) - Certificate #NSF-SFIS-5Y031-SF5. Forest products from this sale may be delivered to the mill as "FSC 100% and / or SFI certified" as long as the contractor hauling the forest products is chain-of-custody (COC) certified or covered under a COC certificate from the destination mill. The purchaser is responsible for maintaining COC after leaving the sale area.

#### 13. Good Neighbor Authority (GNA) Requirements (10/22)

If the name of this timber sales contains the acronym GNA, it is authorized by the Good Neighbor Authority (GNA) and covered by various agreements between the U.S. Forest Service and the State. The timber sale occurs on federal land and the following conditions apply:

GNA contracts on US Forest Service land will not be awarded to purchasers on the Federal list of excluded parties. The System for Award Management (SAM) will be checked for active excluded parties prior to award of contract. In

addition, the Bidder to whom award is made must complete an Assurance Regarding Felony Conviction or Tax Delinquent Status for Corporate Applicants (AD-3031).

14. Good Neighbor Authority (GNA) Requirements, con't (10/22)

Bidder certifies, by signing this bid form, that to the best of Bidder's knowledge that the following representations are accurate and complete.

- a. That the Bidder and its principals are not presently debarred, suspended, proposed for debarment, declared ineligible, or voluntary excluded from timber sales (covered transactions) by any Federal department or agency.
- b. That the Bidder and its principals have not within a 3-year period preceding this bid been convicted of or had a civil judgment rendered against them for commission of fraud or a criminal offense in connection with obtaining , attempting to obtain, or performing a public (Federal, State, or local) transaction or contract under a public transaction; violation of Federal or State antitrust statutes or commission of embezzlement, theft, forgery, bribery, falsification or destruction of records, making false statements, or receiving stolen property.
- c. That the Bidder and its principals are not presently indicted for or otherwise criminally or civilly charged by a governmental entity (Federal, State, or local) with commission of any of the offenses enumerated in paragraph b of this certification.
- d. That the Bidder and its principals have not within a 3-year period preceding this bid had one or more public transactions (Federal, State, or local) terminated for breach or default of a timber or forest product contract.

Bidders that cannot certify this requirement, in whole or in part, shall submit an explanation with their bid.

Scott Bowen  
Director

# TIMBER SALE INFORMATION

## Don't Pave It Pine (42-005-25)

T49N, R10W, SEC. 19; T49N, R11W, SEC. 12; T49N, R11W, SEC. 13; T49N, R11W, SEC. 14; T49N, R11W, SEC. 24.  
Luce County (Advertised Price \$120,322.40)

SALE NOTE: There are ORV and equestrian trails within the Sale Area. See Sale Spec 5.2.40 for restrictions.

A recreation site such as a trail, pathway, or campground is within the sale area or the vicinity. Certain restrictions/specifications may be applicable including time restrictions.

A timber sale contract for this lump sum, sealed bid timber sale will be awarded to the responsible bidder offering the highest sealed bid price. All units of volume listed below were estimated using the Inventory Manager computer program and the new Michigan taper model. Bids must be at or above the following advertised price for each product and species:

<u>PRODUCTS &amp; SPECIES</u>	<u>ESTIMATED UNITS*</u>	<u>ADVERTISED PRICE</u>
Pulpwood		
B. T. Aspen	9 Cords	\$ 11.95 / Cord
Jack Pine	4,664 Cords	\$ 14.25 / Cord
Mixed Hardwood	31 Cords	\$ 6.35 / Cord
Red Pine	1,047 Cords	\$ 46.50 / Cord
Scotch Pine	133 Cords	\$ 9.00 / Cord
White Pine	310 Cords	\$ 11.85 / Cord

\* The total volume is statistically estimated within plus (+) or minus (-) 9.34 percent. There are an estimated 6,192 cords on this timber sale, plus or minus 579 cords at the 95% confidence level. The estimated units are final and not subject to adjustment. Prospective bidders are urged to examine this timber and to make their own estimates of quantity and quality.

### **BOND AND PAYMENT SCHEDULE:**

1. A bond in the amount of \$6,016.00 to insure faithful performance of the conditions of the contract will be deposited by the successful bidder within 21 days of the sale award.
2. Cutting in any sale or unit without the required advance payment would be considered a trespass.
3. Total payment must be paid in advance or according to the following schedule:
  - (a) Ten percent (10%) of the sale value must be paid within 21 days of the sale award.
  - (b) The 10% down payment will be credited towards the first unit cut.
  - (c) Payment for each of the following units must be made before cutting begins in that unit:

<u>PAYMENT UNIT NUMBER</u>	<u>PERCENT OF TOTAL SALE VALUE</u>
01	20.6%
02	8.6%
03	16.0%
04	9.0%
05	2.6%
06	9.0%
07	21.7%
08	6.8%
09	2.4%
10	3.3%

4. If no cutting takes place, the 10% down payment will not be refunded.
5. Operations on the contract issued will terminate on 12/31/2030.

### **SALE STATISTICS**

Volumes were calculated in cubic feet using the Michigan taper model. Cubic foot volume includes all wood inside bark for the product indicated. For display purposes, cubic feet were converted to cords and MBF using a simple conversion factor, e.g. 79 cubic feet per cord and 185 cubic feet per MBF. The cubic foot volumes are precise; the cords and MBF volumes are not. Cubic foot volume cannot be directly converted to cords or boards with precision.

## SALE VOLUMES

The total estimated sale volume may not equal the sum of the species/products due to the nature of statistical calculations associated with double sampling methodology.

VOLUME			STATISTICAL RANGE IN CORDS	
TOTAL CUBIC FEET	TOTAL CORDS	PERCENT ERROR	MINIMUM	MAXIMUM
489,158	6,192	9.34%	5,613	6,771

## VDU VOLUMES

A VDU is a Volume Determination Unit. Volumes and their associated statistics are calculated at the VDU level and summarized to the sale level. There is often a one to one relationship between a VDU and a Payment Unit, but not always, depending on the cruise design. Refer to the VDU TO PAYMENT UNIT table.

	VOLUME			RANGE IN CORDS	
VDU	TOTAL CUBIC FEET	TOTAL CORDS	PERCENT ERROR	MINIMUM	MAXIMUM
34	120,278	1,523	18.21%	1,245	1,800
43	310,479	3,930	12.18%	3,451	4,409
51	42,798	542	31.74%	370	714
52	15,603	198	36.68%	125	270
<b>TOTAL:</b>	<b>489,158</b>	<b>6,192</b>		<b>5,192</b>	<b>7,192</b>

## VDU TO PAYMENT UNIT

When a VDU is associated with more than one Payment Unit (PU), the VDU volumes are assigned to the PU based on acres of the VDU within the PU.

VDU	VDU ACRES	PU	PU ACRES
34	68.3	6	20.1
		7	48.2
43	129.0	1	46.7
		2	19.5
		3	36.3
		4	20.5
		5	6.0
51	28.4	8	19.0
		9	0.3
		10	9.1
52	9.1	8	0.5
		9	8.4
		10	0.2
<b>TOTAL:</b>	<b>234.8</b>		<b>234.8</b>

**DESCRIPTION OF TIMBER BY PAYMENT UNIT (PU)**

PU	MARKET GROUP	PRODUCT	QUANTITY	UNIT	ACRES	ADVERTISE PRICE
1	B. T. Aspen Jack Pine Mixed Hardwood <i>Paper Birch</i> <i>Red Maple</i> Red Pine White Pine	Pulpwood	4 1,245 9 4 5 143 22	Cords Cords Cords <i>Cords</i> <i>Cords</i> Cords Cords	46.7	\$24,756.40
2	B. T. Aspen Jack Pine Mixed Hardwood <i>Paper Birch</i> <i>Red Maple</i> Red Pine White Pine	Pulpwood	1 520 4 2 2 60 9	Cords Cords Cords <i>Cords</i> <i>Cords</i> Cords Cords	19.5	\$10,344.00
3	B. T. Aspen Jack Pine Mixed Hardwood <i>Paper Birch</i> <i>Red Maple</i> Red Pine White Pine	Pulpwood	3 968 7 3 4 111 17	Cords Cords Cords <i>Cords</i> <i>Cords</i> Cords Cords	36.3	\$19,237.25
4	B. T. Aspen Jack Pine Mixed Hardwood <i>Paper Birch</i> <i>Red Maple</i> Red Pine White Pine	Pulpwood	1 547 4 2 2 63 10	Cords Cords Cords <i>Cords</i> <i>Cords</i> Cords Cords	20.5	\$10,880.10
5	Jack Pine Mixed Hardwood <i>Red Maple</i> Red Pine White Pine	Pulpwood	160 1 1 18 3	Cords Cords <i>Cords</i> Cords Cords	6.0	\$3,158.90
6	Jack Pine Mixed Hardwood <i>Paper Birch</i> Red Pine White Pine	Pulpwood	242 2 2 144 61	Cords Cords <i>Cords</i> Cords Cords	20.1	\$10,880.05
7	Jack Pine Mixed Hardwood <i>Paper Birch</i> Red Pine White Pine	Pulpwood	580 4 4 344 145	Cords Cords <i>Cords</i> Cords Cords	48.2	\$26,004.65
8	Jack Pine Red Pine Scotch Pine White Pine	Pulpwood	236 94 18 27	Cords Cords Cords Cords	19.5	\$8,215.95
9	Jack Pine Red Pine Scotch Pine White Pine	Pulpwood	53 25 107 3	Cords Cords Cords Cords	8.7	\$2,916.30
10	Jack Pine Red Pine Scotch Pine White Pine	Pulpwood	113 45 8 13	Cords Cords Cords Cords	9.3	\$3,928.80

TOTAL:	6,194	Cords
--------	-------	-------

## Sale Specific Conditions & Requirements

**Sale Name: Don't Pave It Pine**

**Sale Number: 42-005-25 Seq#: 1**

### 1 - Sale Area

#### 1.2 - Boundaries

##### 1.2.1 - Painted Boundaries (9/19)

The sale boundary and Payment Unit boundaries are marked and identified by red and yellow paint or are unmarked and identified by a road. Exterior sale boundary lines against state are marked with red paint, with the exception of the boundaries that are against the Seven Mile Fire Lane, which are unpainted and designated by the Seven Mile Fire Lane. Interior Payment Unit boundaries are marked with yellow paint. Retention patches are marked with red paint; no harvesting activities may occur within these areas. Yellow painted trees designating an interior Payment Unit boundary are only to be cut when all surrounding Payment Units have been paid.

### 2 - Timber Specifications

#### 2.1 - Included Timber

##### 2.1.1 - Clearcut Unit(s) with Unmerchantable Trees (6/14)

Within Payment Unit(s) 1-5 & 8-10, cut all trees that are two (2) inches or more at DBH, except do not cut special protection trees marked with green paint in Payment Unit 9. In addition, in Payment Units 1-5, 8 & 10, do not cut any red or white pine over 20 inches in diameter.

Special protection trees identified in accordance with condition 3.4.2, within clearcutting unit boundaries, are not Included Timber and are to be protected.

##### 2.1.2 - Clearcut Unit(s) w/o Unmerchantable Trees (8/11)

Within Payment Unit(s) 6 & 7, cut all trees which meet minimum piece specifications in 2.2 Utilization, except do not cut red and white pine over 20 inches in diameter. In addition, do not cut any sub-merchantable trees under 5 inches in diameter. Care must be taken to protect advanced regeneration in these units (see spec 3.4.1).

#### 2.2 - Utilization

##### 2.2.3 - Stump Heights (12/24)

Stump heights within the Sale Area shall not exceed six (6) inches for all trees. This is in order to facilitate planting operations.

### 3 - Payments

#### 3.3 - Pre-measured Sales

##### 3.3.4 - Dividing Payment Units (7/14)

Payment Unit(s) 1, 3 & 7 may be divided at the request of the Purchaser and upon approval of the Unit Manager. Dividing Payment Units is a contract modification which requires a Timber Sale Contract Amendment. There will be only one division per Payment Unit.

#### 3.4 - Damaged Timber

##### 3.4.1 - Damaged Timber (12/24)

General Condition and Requirement 3.4 Damaged Timber, defines liquidated damages for undesignated live merchantable trees which are cut or injured. In addition, extreme care should be taken to avoid damage to tree seedlings and saplings in Payment Units 6 & 7.

Within Payment Units 6 & 7, if more than 20% of the tree seedlings or saplings (1/4" to 4.5" DBH) within the units are damaged, liquidated damages will be assessed at 300.00 dollars per acre for all acreage within that specified portion of the Sale Area that was damaged.

##### 3.4.2 - Special Protection Trees (1/25)

The Purchaser shall not cut live or dead special protection trees within cutting units or clearings. Special protection trees are

of various species and are marked in green paint. If Purchaser's operations have cut or damaged special protection trees through carelessness, the Purchaser shall pay triple stumpage as fixed, agreed and liquidated damages for each special protection tree cut or damaged. Such payment does not constitute ownership of the undesignated timber.

#### 3.4.3 - Special Protection Areas (8/11)

The Purchaser shall protect special protection areas from damage by the Purchaser's operations. Special protection areas are marked with a red boundary line. The Purchaser shall not cut live or dead trees within special protection areas. If the Purchaser's operations have cut or damaged special protection areas through carelessness, the Purchaser shall pay triple stumpage as fixed, agreed and liquidated damages for each acre or part thereof cut or damaged. Such payment does not constitute ownership of the undesignated timber.

### 4 - Transportation

#### 4.1 - Construction

##### 4.1.4 - Timber Removed for Construction (3/23)

Trees cut or damaged in the process of pre-approved road, landing, or skid trail construction will be decked in an area separate from other Designated Timber and not removed until measured by the Sale Administrator. Payment will be made at contract prices or average prices, if not on the contract.

##### 4.1.6 - Road Construction (4/24)

Construction of new roads or improvements of existing roads shall be done in such a way as to minimize the environmental and visual impacts. Merchantable trees shall be cut and utilized unless otherwise directed. Non-merchantable trees shall be severed and laid flat on the ground. Slash shall be scattered, not left in windrows, and kept a minimum of 10 feet back from the road edge. Stumps shall be set upright, not left on edge, and be moved at least 10 feet away from the road edge. Disturbed soil shall be feathered into the woods and not left in berms or windrows.

##### 4.1.7 - Road Closure (10/11)

All new roads built into the sale must be blocked to vehicle traffic upon completion of the sale. Overgrown roads that are reopened shall be considered new roads. These roads must be rendered impassable to cars and trucks. All stumps from road building and landing construction must be reserved to block any newly constructed roads upon completion of the sale. Contact the Sale Administrator for specific details of design and placement.

#### 4.2 - Maintenance

##### 4.2.2 - Fill Material (4/07)

To maintain roads, fill material may be needed in areas where "holes" exist or may be expected to develop. This fill material should be placed before trucking begins. Contact the Sale Administrator regarding the availability of onsite sand or gravel from adjacent State-owned lands.

##### 4.2.4 - Grading (10/16)

For completion of the sale, state forest roads must be graded. In general, this will require a road grader or bulldozer to shape up the roads after forest products have been hauled off site. This includes cleaning of drainage areas, grading, crowning and filling with gravel, if necessary. The grading equipment to be used must be approved by the Unit Manager or his/her representative.

##### 4.2.5 - Two Wheel Drive Condition (2/04)

All existing trail roads on and adjacent to the Sale Area must be passable by two-wheel drive traffic for the duration of the sale.

### 5 - Operations

#### 5.2 - Conduct of Operations

##### 5.2.1 - Slash

###### 5.2.1.8 - Slash Height (12/08)

No slash may exceed 24 inches in height.

###### 5.2.1.11 - Slash for Reforestation (3/21)

To facilitate reforestation, the Sale Area shall be left with slash evenly distributed. Bunched tops within the cutting area

shall be broken up and scattered. Stumps shall be cut low to the ground.

#### 5.2.2 - Hazard Trees/Snags

##### 5.2.2.1 - Den Trees (10/16)

Obvious hollow and/or den trees shall be protected and left standing unless they are a safety hazard.

##### 5.2.31 - Landing Locations (9/13)

Recommended landing areas are marked on the Timber Sale Map with a tree icon. Landings should be confined to these designated sites unless otherwise authorized by the Unit Manager or his/her representative. In general, landings are limited to a "T" turnaround which will accommodate a truck with a 50-foot trailer. Landings may not be constructed on the equestrian trails, directly on the Seven Mile Fire Lane (T turn around Ok), or on the new County Road project indicated on the map. Contact Sale Administrator should if changes to landing locations are necessary.

##### 5.2.32 - Decking/Landing Restoration (9/13)

All decking and landing areas must have the surface area restored to a condition equal to or better than before. This is to ensure the proper regeneration of the stand. Wood debris, chips and "cookies" from trimmings must be removed or scattered away from landing and loading areas and may not be windrowed on the edge.

##### 5.2.40 - Pathway Protection (10/10)

There are ORV and equestrian trails within the Sale Area. Do not cut trees or damage posts with pathway markers. Maintain a 10-foot-wide slash, debris, and rut free zone daily, using the pathway as the centerline. Do not run equipment down the pathway. The road, Seven Mile Fire Lane is an equestrian trail and is shown on the Timber Sale Map. Do not cut trees or damage posts with blue pathway markers. Maintain a 10-foot-wide slash, debris, and rut free zone daily, using the pathway as the centerline.

#### 5.8 - Protection of Endangered Species

##### 5.8.5 - Protection of Raptor Nests (3/13)

All trees with raptor nests will be protected if found during harvesting operations. Notification will be made to the Unit Manager or his/her representative who will notify the Wildlife Biologist so an onsite evaluation and recommendation can be made, if necessary.

### 6 - Safety and Fire Prevention

#### 6.2 - Signing

##### 6.2.1 - Road Posting (10/20)

The Purchaser is responsible for posting and maintaining caution signs on Seven Mile Fire Lane and state forest roads prior to beginning operations. The road must be posted at locations designated on the map to warn of logging activity and truck traffic. Signs must be removed when harvest operations are suspended or completed. The Purchaser will provide these signs.

##### 6.2.3 - Recreational Trail Posting (10/20)

The Purchaser is responsible for posting and maintaining caution signs on the ORV and equestrian trails near the Sale Area prior to beginning operations. The trail must be posted at locations designated on the Timber Sale Map to warn of logging activity and truck traffic at both ends of the trail. Signs must be removed when harvest operations are suspended or completed. The DNR will provide these signs.

### 7 - Other Conditions

#### 7.3 - Contract Modifications

##### 7.3.3 - Modification for Reforestation (8/05)

When contractual work of Purchaser has been accepted for any Payment Unit identified on Sale Area Map, Payment Unit will be eliminated from the Sale Area on written notice so that reforestation operations can begin.



### TIMBER SALE MAP

This information provided by authority of Part 525, 1994 PA 451, as amended.

Sale Number

**42-005-25**

Date

07/31/2025

Forest Management Unit

County

Mapped By: Anthony Ciaramitaro

Scale

Page

Of

Newberry Mgt Unit

Luce

Cruised By: Shingleton Unit Staff

1:14,380

1

1

Township  
49N

Range  
10W /

Section(s) and Subdivision(s) Sec. 24 SENE; Sec. 12 SWSE; Sec. 13 NENW,SWNW,NE,W1/2SW; Sec. 14 SENE,E1/2SE; Sec. 19 NWNW,S1/2NW;

#### Cover Type

A = Aspen	J = Jack Pine	O = Oak	U = Upland Brush
B = Paper Birch	K = Rock	P = Lowland Poplar	UM = Upland Mix Forest
C = Cedar	L = Lowland Brush	Q = Mixed Swamp Conifer	V = Bog or Marsh
D = Treed Bog	LM = Lowland Mix Forest	R = Red Pine	W = White Pine
E = Swamp Hardwoods	M = Maple, Beech, Birch	S = Black Spruce	X = Non Stocked
F = Spruce/Fir	MC = Mixed Conifer	T = Tamarack	Y = Sand
G = Grass	MD = Mixed Deciduous	Z = Water	
H = Hemlock	N = Marsh		

#### Density

0 = Non Stocked	5 = Pole Timber Medium
1 = Seedling Sapling Poor	6 = Pole Timber Well
2 = Seedling Sapling Medium	7 = Saw Timber Poor
3 = Seedling Sapling Well	8 = Saw Timber Medium
4 = Pole Timber Poor	9 = Saw Timber Well

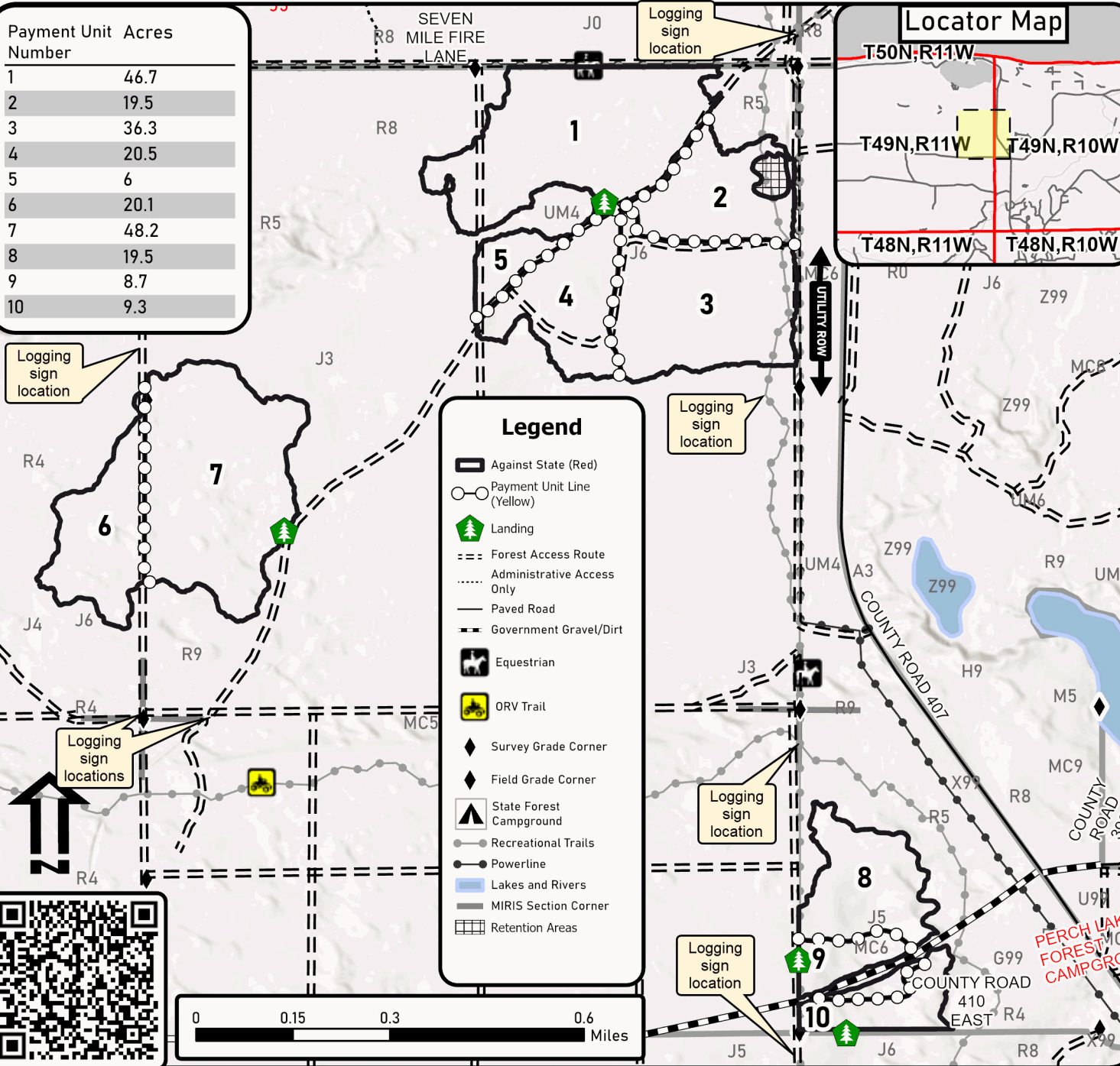
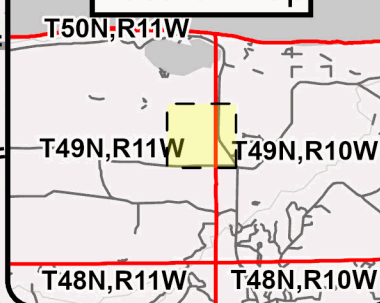
### Don't Pave It Pine

234.8 Acres

Payment Unit  
Number

Payment Unit Number	Acres
1	46.7
2	19.5
3	36.3
4	20.5
5	6
6	20.1
7	48.2
8	19.5
9	8.7
10	9.3

#### Locator Map



# TIMBER SALE INFORMATION

## Smiley Pine (42-010-25)

T49N, R12W, SEC. 4; T49N, R12W, SEC. 5; T49N, R12W, SEC. 6; T50N, R12W, SEC. 31.  
Luce County (Advertised Price \$32,504.25)

SALE NOTE: No new roads will be permitted in any Payment Unit. See Sale Spec 4.1.12 for additional information.

The County must be contacted prior to constructing any new back-in spurs leading from the County Road R-O-W. This applies to Payment Unit 1.

It is recommended, but not required, that within Payment Unit(s) 1-6, skidding and hauling occur during the late fall/early winter months because of the sandy roads in the Sale Area and summer tourist traffic on County Road 407 / H58.

The North Country Trail is a hiking trail and is shown on the Timber Sale Map. See Sale Spec 5.2.40 for restrictions.

A recreation site such as a trail, pathway, or campground is within the sale area or the vicinity. Certain restrictions/specifications may be applicable including time restrictions.

A timber sale contract for this lump sum, sealed bid timber sale will be awarded to the responsible bidder offering the highest sealed bid price. All units of volume listed below were estimated using the Inventory Manager computer program and the new Michigan taper model. Bids must be at or above the following advertised price for each product and species:

<u>PRODUCTS &amp; SPECIES</u>	<u>ESTIMATED UNITS*</u>	<u>ADVERTISED PRICE</u>
Pulpwood		
Jack Pine	2,281 Cords	\$ 14.25 / Cord

\* The total volume is statistically estimated within plus (+) or minus (-) 7.44 percent. There are an estimated 2,281 cords on this timber sale, plus or minus 170 cords at the 95% confidence level. The estimated units are final and not subject to adjustment. Prospective bidders are urged to examine this timber and to make their own estimates of quantity and quality.

### **BOND AND PAYMENT SCHEDULE:**

1. A bond in the amount of \$1,625.00 to insure faithful performance of the conditions of the contract will be deposited by the successful bidder within 21 days of the sale award.
2. Cutting in any sale or unit without the required advance payment would be considered a trespass.
3. Total payment must be paid in advance or according to the following schedule :
  - (a) Ten percent (10%) of the sale value must be paid within 21 days of the sale award.
  - (b) The 10% down payment will be credited towards the first unit cut.
  - (c) Payment for each of the following units must be made before cutting begins in that unit:

<u>PAYMENT UNIT NUMBER</u>	<u>PERCENT OF TOTAL SALE VALUE</u>
01	13.7%
02	19.7%
03	17.4%
04	18.0%
05	15.7%
06	15.5%

4. If no cutting takes place, the 10% down payment will not be refunded.
5. Operations on the contract issued will terminate on 12/31/2030.

### **SALE STATISTICS**

Volumes were calculated in cubic feet using the Michigan taper model. Cubic foot volume includes all wood inside bark for the product indicated. For display purposes, cubic feet were converted to cords and MBF using a simple conversion factor, e.g. 79 cubic feet per cord and 185 cubic feet per MBF. The cubic foot volumes are precise; the cords and MBF volumes are not. Cubic foot volume cannot be directly converted to cords or boards with precision.

## SALE VOLUMES

The total estimated sale volume may not equal the sum of the species/products due to the nature of statistical calculations associated with double sampling methodology.

VOLUME			STATISTICAL RANGE IN CORDS	
TOTAL CUBIC FEET	TOTAL CORDS	PERCENT ERROR	MINIMUM	MAXIMUM
180,185	2,281	7.44%	2,111	2,451

## VDU VOLUMES

A VDU is a Volume Determination Unit. Volumes and their associated statistics are calculated at the VDU level and summarized to the sale level. There is often a one to one relationship between a VDU and a Payment Unit, but not always, depending on the cruise design. Refer to the VDU TO PAYMENT UNIT table.

	VOLUME			RANGE IN CORDS	
VDU	TOTAL CUBIC FEET	TOTAL CORDS	PERCENT ERROR	MINIMUM	MAXIMUM
12	155,545	1,969	7.70%	1,817	2,121
45	24,640	312	25.52%	232	391
<b>TOTAL:</b>	<b>180,185</b>	<b>2,281</b>		<b>2,050</b>	<b>2,512</b>

## VDU TO PAYMENT UNIT

When a VDU is associated with more than one Payment Unit (PU), the VDU volumes are assigned to the PU based on acres of the VDU within the PU.

VDU	VDU ACRES	PU	PU ACRES
12	106.5	2	24.4
		3	21.5
		4	22.2
		5	19.3
		6	19.1
45	15.4	1	15.4
<b>TOTAL:</b>	<b>121.9</b>		<b>121.9</b>

## DESCRIPTION OF TIMBER BY PAYMENT UNIT (PU)

PU	MARKET GROUP	PRODUCT	QUANTITY	UNIT	ACRES	ADVERTISE PRICE
1	Jack Pine	Pulpwood	312	Cords	15.4	\$4,446.00
2	Jack Pine	Pulpwood	452	Cords	24.4	\$6,441.00
3	Jack Pine	Pulpwood	397	Cords	21.5	\$5,657.25
4	Jack Pine	Pulpwood	410	Cords	22.2	\$5,842.50
5	Jack Pine	Pulpwood	357	Cords	19.3	\$5,087.25
6	Jack Pine	Pulpwood	353	Cords	19.1	\$5,030.25
<b>TOTAL:</b>			2,281	Cords		

## Sale Specific Conditions & Requirements

**Sale Name: Smiley Pine**

**Sale Number: 42-010-25 Seq#: 1**

### 1 - Sale Area

#### 1.2 - Boundaries

##### 1.2.1 - Painted Boundaries (9/19)

The sale boundary and Payment Unit boundaries are marked and identified by red and yellow paint. Exterior sale boundary lines against state are marked with red paint. Interior Payment Unit boundaries are marked with yellow paint. The red painted boundary line trees are not Included Timber and are to be protected. Yellow painted jack pine trees designating an interior Payment Unit boundary are only to be cut when all surrounding Payment Units have been paid.

### 2 - Timber Specifications

#### 2.1 - Included Timber

##### 2.1.1 - Clearcut Unit(s) with Unmerchantable Trees (6/14)

Within Payment Unit(s) 1-6, cut all jack pine trees that are two (2) inches or more at DBH, except do not cut any red pine, white pine or oak. Special protection areas identified in accordance with condition 3.4.3, within clearcutting unit boundaries, are not Included Timber and are to be protected.

#### 2.2 - Utilization

##### 2.2.3 - Stump Heights (12/24)

Stump heights within the Sale Area shall not exceed six (6) inches for all trees. This is in order to facilitate planting operations.

##### 2.2.9 - No Chipping Permitted (12/08)

Within Payment Unit(s) 1-6, no chipping is permitted.

### 3 - Payments

#### 3.4 - Damaged Timber

##### 3.4.3 - Special Protection Areas (8/11)

The Purchaser shall protect special protection areas from damage by the Purchaser's operations. Special protection areas are marked with a red boundary line and labeled as retention areas on map.

### 4 - Transportation

#### 4.1 - Construction

##### 4.1.3 - Slash and Earthen Piles (8/04)

Piles or windrows of earth along roads and landings that have been widened or constructed shall be leveled. Slash from road maintenance or construction, including stumps, shall be dispersed throughout the sale.

##### 4.1.7 - Road Closure (10/11)

All new back-in spurs and landings built into the sale must be blocked to vehicle traffic upon completion of the sale. All stumps from back-in spur building and landing construction must be reserved to block any newly constructed roads upon completion of the sale. These stumps must be scattered along the road system to prohibit vehicular movement. Contact the Sale Administrator for specific details of design and placement.

##### 4.1.12 - No New Roads (1/12)

No new roads will be permitted in any Payment Unit. All operations are limited to existing roads. Only skid trails and back-in spurs will be allowed.

#### 4.2 - Maintenance

##### 4.2.3 - Road maintenance (8/13)

The following road maintenance is required: Within 30 days of completion of hauling, or if no hauling occurs for 30 days, the

road must be maintained and graded. This includes cleaning of drainage areas, grading, crowning and filling with gravel, if necessary. Damages will be assessed if grading/repair does not occur. Damages will be the cost to have the work completed.

#### 4.3 - Public Right-of-Way

##### 4.3.2 - County R-O-W (12/06)

The County must be contacted prior to constructing any new back-in spurs leading from the County Road R-O-W. This applies to Payment Unit 1.

### 5 - Operations

#### 5.2 - Conduct of Operations

##### 5.2.1 - Slash

###### 5.2.1.8 - Slash Height (12/08)

No slash or tree tops may exceed 24 inches in height.

###### 5.2.1.11 - Slash for Reforestation (3/21)

To facilitate reforestation, the Sale Area shall be left with slash evenly distributed. Bunched tops within the cutting area shall be broken up and scattered. Stumps shall be cut low to the ground. Processing sites shall not be left with a compacted layer of slash; tops from these sites shall be hauled back into the cut area and scattered.

##### 5.2.2 - Hazard Trees/Snags

###### 5.2.2.1 - Den Trees (10/16)

Obvious hollow and/or den trees shall be protected and left standing unless they are a safety hazard.

##### 5.2.22 - Operating Caution

###### 5.2.22.1 - Operating Caution (6/11)

It is recommended, but not required, that within Payment Unit(s) 1-6, skidding and hauling occur during the late fall/early winter months. The reason for the recommendation is because of the sandy roads in the Sale Area and summer tourist traffic on County Road 407 / H58.

##### 5.2.32 - Decking/Landing Restoration (9/13)

All decking and landing areas must have the surface area restored to a condition equal to or better than before. This is to ensure the proper regeneration of the stand. Wood debris, chips and "cookies" from trimmings must be removed or scattered away from landing and loading areas and may not be windrowed on the edge.

##### 5.2.40 - Pathway Protection (10/10)

The North Country Trail is a hiking trail and is shown on the Timber Sale Map. Do not cut trees or damage posts with blue pathway markers. Maintain a 20-foot-wide slash, debris, and rut free zone daily, using the pathway as the centerline. Do not run equipment down the pathway. Skidding across the trail may only occur in locations approved by the Sale Administrator.

#### 5.4 - Soil Protection

##### 5.4.4 - Slope Protection (9/19)

Skid trails and roads on slopes shall be water barred with slash and/or stumps, if needed, as soon as use is complete to prevent erosion.

##### 5.4.5 - Soil Caution (11/04)

Care must be taken to minimize soil damage due to the sandy soils.

#### 5.8 - Protection of Endangered Species

##### 5.8.5 - Protection of Raptor Nests (3/13)

All trees with raptor nests will be protected if found during harvesting operations. Notification will be made to the Unit Manager or his/her representative who will notify the Wildlife Biologist so an onsite evaluation and recommendation can be made, if necessary.

### 6 - Safety and Fire Prevention

## 6.2 - Signing

### 6.2.1 - Road Posting (10/20)

The Purchaser is responsible for posting and maintaining caution signs on County Road 407 prior to beginning operations. The road must be posted at appropriate distances from the Sale Area to warn of logging activity and truck traffic. Signs must be removed when harvest operations are suspended or completed. The Purchaser will provide these signs.

### 6.2.3 - Recreational Trail Posting (10/20)

The Purchaser is responsible for posting and maintaining caution signs on The North Country Trail prior to beginning operations. The trail must be posted at appropriate distances from the Sale Area to warn of logging activity and truck traffic at both ends of the trail. Signs must be removed when harvest operations are suspended or completed. The DNR will provide the signs.

## 7 - Other Conditions

### 7.3 - Contract Modifications

#### 7.3.3 - Modification for Reforestation (8/05)

When contractual work of Purchaser has been accepted for any Payment Unit identified on Sale Area Map, Payment Unit will be eliminated from the Sale Area on written notice so that reforestation operations can begin.



**TIMBER SALE MAP**

This information provided by authority of Part 525, 1994 PA 451, as amended.

Sale Number <b>42-010-25</b>	Date 05/12/2025
Scale 1:19,220	Page 1
	Of 1

Forest Management Unit Newberry Mgt Unit	County Luce	Mapped By: Anthony Ciaramitaro
		Cruised By: Newberry Unit Staff

Township 49N / 50N	Range 12W	Section(s) and Subdivision(s) Sec. 31 S1/2SW,SWSE; Sec. 4 W1/2NW,NWSW; Sec. 5 SENE; Sec. 6 NW,NWNE;
-----------------------	--------------	---

Cover Type			
A = Aspen	J = Jack Pine	O = Oak	U = Upland Brush
B = Paper Birch	K = Rock	P = Lowland Poplar	UM = Upland Mix Forest
C = Cedar	L = Lowland Brush	Q = Mixed Swamp Conifer	V = Bog or Marsh
D = Treed Bog	LM = Lowland Mix Forest	R = Red Pine	W = White Pine
E = Swamp Hardwoods	M = Maple, Beech, Birch	S = Black Spruce	X = Non Stocked
F = Spruce/Fir	MC = Mixed Conifer	T = Tamarack	Y = Sand
G = Grass	MD = Mixed Deciduous	Z = Water	
H = Hemlock	N = Marsh		

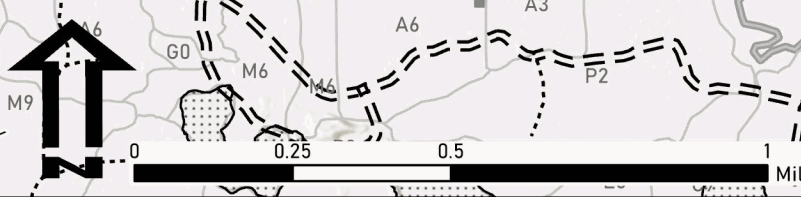
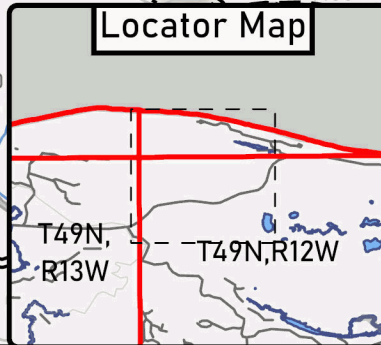
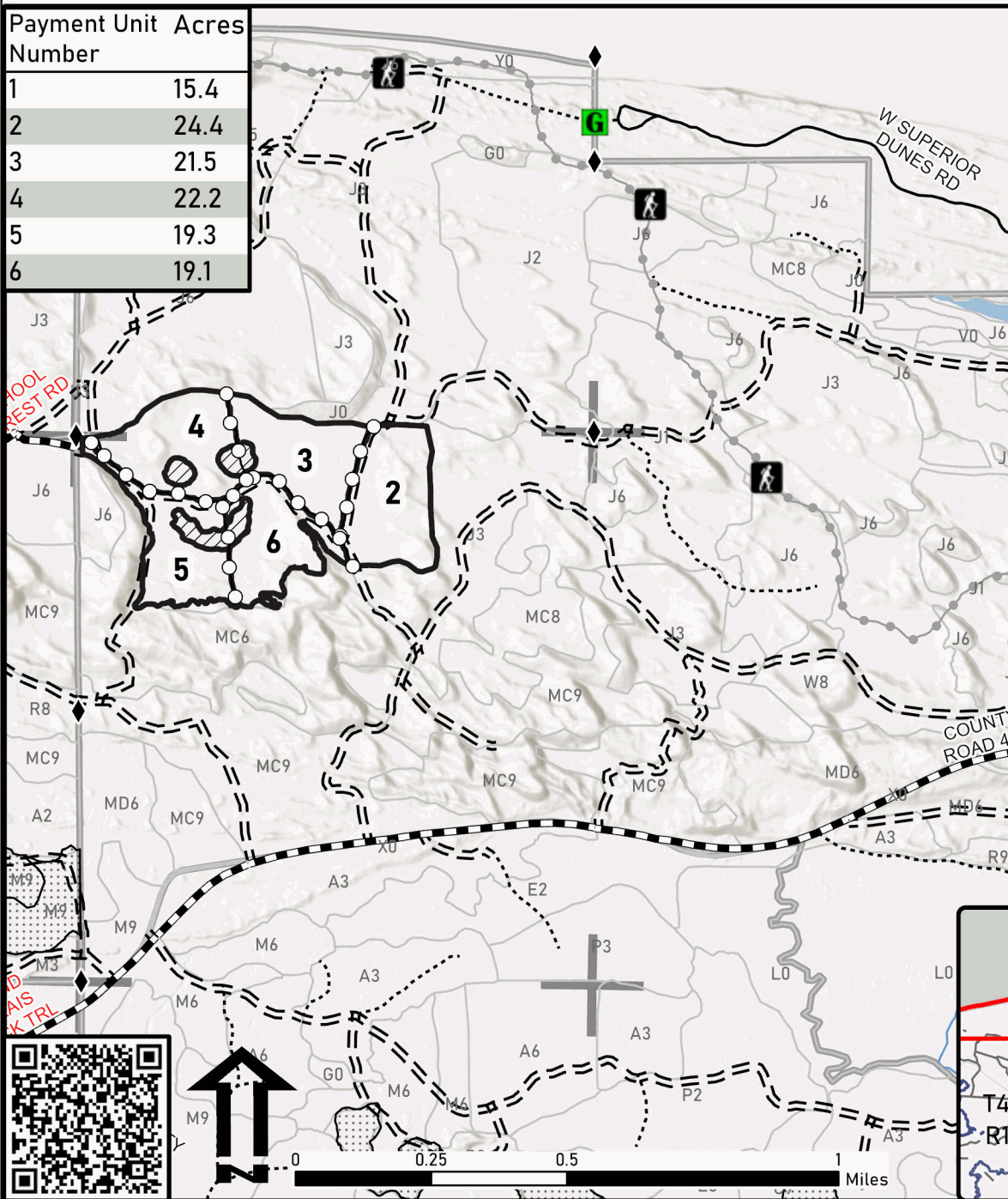
Density	
0 = Non Stocked	5 = Pole Timber Medium
1 = Seedling Sapling Poor	6 = Pole Timber Well
2 = Seedling Sapling Medium	7 = Saw Timber Poor
3 = Seedling Sapling Well	8 = Saw Timber Medium
4 = Pole Timber Poor	9 = Saw Timber Well

# Smiley Pine

121.9 Acres

Payment Unit Number	Acres
1	15.4
2	24.4
3	21.5
4	22.2
5	19.3
6	19.1

Legend	
	Against State (Red)
	Payment Unit (Yellow)
	Retention Area (Red)
	Field Grade Corner
	Nearby Timber Sale
	Recreational Trails
	Forest Access Route
	Administrative Access Only
	Paved Road
	Government Gravel/Dirt
	Private Gravel/Dirt
	Lakes and Rivers
	MIRIS Section Corner
	Gate
	Hiking



Don't Pave It Pine (42-005-25)

T49N, R10W, SEC. 19; T49N, R11W, SEC. 12; T49N, R11W, SEC. 13; T49N,

In response to the notice of sale to be held 3:00 p.m. (local time) on June 18, 2026, I am hereby submitting my sealed bid ( firm offer) for the following forest products to be cut. Bids for individual species must be at or above the advertised price. All non-responsive bid forms may be rejected.

<u>PRODUCTS &amp; SPECIES</u>	<u>ESTIMATED VOLUME*</u>	<u>ADVERTISED PRICE</u>	<u>BID PRICE/UNIT</u>
Pulpwood			
B. T. Aspen	9 Cords	\$ 11.95/Cord	\$ _____
Jack Pine	4,664 Cords	\$ 14.25/Cord	\$ _____
Mixed Hardwood	31 Cords	\$ 6.35/Cord	\$ _____
Red Pine	1,047 Cords	\$ 46.50/Cord	\$ _____
Scotch Pine	133 Cords	\$ 9.00/Cord	\$ _____
White Pine	310 Cords	\$ 11.85/Cord	\$ _____

\*The volumes are statistically estimated within plus (+) or minus (-) 9.34 percent at 95% confidence level. These estimated volumes are final and not subject to adjustment. Prospective bidders are urged to examine this timber and to make their own estimates of quantity and quality.

I understand that any or all bids may be rejected. All bids must be signed and all bid items must be bid or the bid form may be rejected. I also understand that consideration and awarding a contract will be based upon my past performance and ability to complete the contract based upon equipment and staffing subject to my control.

FEDERAL ID: \_\_\_\_ - \_\_\_\_ - \_\_\_\_ or SOCIAL SECURITY NUMBER: \_\_\_\_ - \_\_\_\_ - \_\_\_\_

Company or individual bidding: \_\_\_\_\_

Company representative's name: \_\_\_\_\_

Address: \_\_\_\_\_

City: \_\_\_\_\_ State: \_\_\_\_\_ Zip: \_\_\_\_\_

IF AVAILABLE, PLEASE PLACE THE PERSONALIZED LABEL FROM YOUR PROSPECTUS IN THE ABOVE BOX.

Individual or company representative's signature: \_\_\_\_\_ Date: \_\_\_\_\_

Phone number : \_\_\_\_\_ Email (optional): \_\_\_\_\_

**THE WINNING BIDDER MUST COMPLETE THE VERIFICATION OF WORKER'S DISABILITY COMPENSATION ACT COMPLIANCE (ON REVERSE SIDE IF DOUBLE SIDED) WITHIN 21 DAYS OF SALE AWARD DATE**



Smiley Pine (42-010-25)

T49N, R12W, SEC. 4; T49N, R12W, SEC. 5; T49N, R12W, SEC. 6; T50N, R12W,

In response to the notice of sale to be held 3:00 p.m. (local time) on June 18, 2026, I am hereby submitting my sealed bid ( firm offer) for the following forest products to be cut. Bids for individual species must be at or above the advertised price. All non-responsive bid forms may be rejected.

<u>PRODUCTS &amp; SPECIES</u>	<u>ESTIMATED VOLUME*</u>	<u>ADVERTISED PRICE</u>	<u>BID PRICE/UNIT</u>
Pulpwood			
Jack Pine	2,281 Cords	\$ 14.25/Cord	\$ _____

\*The volumes are statistically estimated within plus (+) or minus (-) 7.44 percent at 95% confidence level. These estimated volumes are final and not subject to adjustment. Prospective bidders are urged to examine this timber and to make their own estimates of quantity and quality.

I understand that any or all bids may be rejected. All bids must be signed and all bid items must be bid or the bid form may be rejected. I also understand that consideration and awarding a contract will be based upon my past performance and ability to complete the contract based upon equipment and staffing subject to my control.

FEDERAL ID: \_\_\_\_ - \_\_\_\_ - \_\_\_\_ or SOCIAL SECURITY NUMBER: \_\_\_\_ - \_\_\_\_ - \_\_\_\_

Company or individual bidding: \_\_\_\_\_

Company representative's name: \_\_\_\_\_

Address: \_\_\_\_\_

City: \_\_\_\_\_ State: \_\_\_\_\_ Zip: \_\_\_\_\_

IF AVAILABLE, PLEASE PLACE THE PERSONALIZED LABEL FROM YOUR PROSPECTUS IN THE ABOVE BOX.

Individual or company representative's signature: \_\_\_\_\_ Date: \_\_\_\_\_

Phone number : \_\_\_\_\_ Email (optional): \_\_\_\_\_

**THE WINNING BIDDER MUST COMPLETE THE VERIFICATION OF WORKER'S DISABILITY COMPENSATION ACT COMPLIANCE (ON REVERSE SIDE IF DOUBLE SIDED) WITHIN 21 DAYS OF SALE AWARD DATE**



FOR DEPARTMENT USE ONLY	
Sale Number (XX - XXX - XX - XX)	
Forest Management Unit:	

# TIMBER SALE VERIFICATION OF WORKER'S DISABILITY COMPENSATION ACT COMPLIANCE

As required by Act 317, P.A. 1969 (Worker's Compensation) and  
Part 5 of Act 451 of 1994, as amended.

## VERIFICATION OF WORKER'S DISABILITY COMPENSATION ACT COMPLIANCE

- This verification must be completed and submitted within 21 days of contract award and prior to the issuance of the timber sale contract.
- In addition, if boxes 2B or 2C are checked, then Notice of Exclusion or Certificate of Insurance must be submitted within twenty-one (21) days of the contract award and prior to the issuance of the timber sale contract.
- All information must be typed or printed except for written signatures.

Please Check Appropriate Categories:

1. My business is organized as (you **must** check one of the boxes below):
  - A.  Sole Proprietorship (individual)
  - B.  Partnership
  - C.  Corporation
2. You **must** check one of the boxes below:
  - A.  I certify my business is a sole proprietorship and it has no employees but the sole proprietor. I am not subject to the Worker's Compensation Laws.
  - B.  I certify my business has satisfied its obligation to the Worker's Compensation Act through the use of an approved Notice of Exclusion (BWC-337, Rev. 5/96). I will provide a copy of the Notice of Exclusion within 21 days of the contract award. (For questions or a copy of the BWC-337, please call the Worker's Compensation Bureau at 517 -322-1195).
  - C.  I certify my business has a Worker's Compensation Policy. I will provide an original Certificate of Insurance within twenty-one (21) days of the contract award.
3. If you have checked item 2(A) or 2(B), you **must** indicate the number of **both** full-time and part-time employees, other than yourself, including family members and active partners (if none, you must enter "0").

\_\_\_\_\_ Full-time Employees

\_\_\_\_\_ Part-time Employees

Name of Business		Federal ID (or) Social Security No.	
Address		Telephone (       )	
City	State	ZIP	

*I hereby certify that the above information is true and correct. I agree to notify the Michigan DNR of any changes that occur in factors affecting my coverage during any of my present and future operations.*

\_\_\_\_\_  
Signature of Owner or Authorized Representative

\_\_\_\_\_  
Title

\_\_\_\_\_  
Date

Please complete the "SEALED BID" information on the next page