



**DEPARTMENT OF NATURAL RESOURCES  
STATE OF MICHIGAN  
TIMBER SALE PROSPECTUS #7759**

**SCHEDULED SALE DATE AND TIME:** 9:00 a.m. (local time) on March 4, 2026.

**LOCATION:** ROSCOMMON MGMT UNIT, 8717B N ROSCOMMON RD., ROSCOMMON, MI 48653.

**PROSPECTUS NOTE:** The bidder is advised to inspect the sale area and review the location, estimated volumes, operating costs and contract terms of proposed sales. Please be aware that some landowners may request 60 days or more notice for access across their land.

Notice is hereby given that bids will be received by the Unit Manager, ROSCOMMON MANAGEMENT UNIT, for certain timber on the following described lands:

**Just A Taste Breakup** (71-002-26) / T22N, R01W, SEC. 23, N1/2NE,SWNE.

T22N, R01W, SEC. 24, N1/2NW,SENW,N1/2NE.

Roscommon County, Advertised Price \$103,985.45, 114.7 Acres, Aspen, Hardwood.

SALE NOTE: This sale has Class A road access.

**Jump Scare Pine Oak** (71-013-25) / T22N, R01E, SEC. 1, W1/2NW,NWSW.

T22N, R01E, SEC. 2, E1/2NE,NESW,SE.

T23N, R01E, SEC. 35, NE,NWSE,SESE.

Ogemaw County, Advertised Price \$265,427.25, 224.9 Acres, Hardwood, White Pine.

SALE NOTE: 225 combined acres of white pine thinnings and oak overstory removals located near the intersection of Dow rd and Saint Helen trl. Oak wilt Restrictions apply (see spec 5.2.3.4), and a round wood operation is required for the thinning units (see spec 2.2.6).

A recreation site such as a trail, pathway, or campground is within the sale area or the vicinity. Certain restrictions/specifications may be applicable including time restrictions.

**C81 Mix** (71-015-25) / T23N, R01E, SEC. 21, SW,SE.

T23N, R01E, SEC. 26, W1/2SW.

T23N, R01E, SEC. 27, NWNE,S1/2NE,NESW,S1/2SW,N1/2SE.

T23N, R01E, SEC. 28, NENW,W1/2NE.

T23N, R01E, SEC. 33, SENE.

T23N, R01E, SEC. 34, NENW,SWNW.

Ogemaw County, Advertised Price \$225,225.05, 310.8 Acres, Hardwood, Aspen.

SALE NOTE: The sale consists of several overstory removal treatments and several clearcuts located to the east of St Helen, MI. See oak wilt restrictions.

A recreation site such as a trail, pathway, or campground is within the sale area or the vicinity. Certain restrictions/specifications may be applicable including time restrictions.

## BID INSTRUCTIONS (VER. 10/10/2022):

### 1. Scheduled Bid Location, Date, and Time (2/11)

Bids must be received by the Unit Manager, ROSCOMMON OFFICE, 8717B N Roscommon Rd., Roscommon, MI 48653, no later than 9:00 a.m. (local time) on March 4, 2026. For further information concerning this sale, contact Jason Lewicki at 989-745-5870 extension .

### 2. Bidder's Qualifications (10/22)

If all or part of a timber sale was prepared by a private contractor, the contractor and that contractor's company are not permitted to bid on the timber sale. A person must be 18 years of age or older to purchase timber. Permanent employees of the Department of Natural Resources or members of their immediate household may not bid. Former employees, in the permanent or seasonal class, may not bid until 3 months after the last day of active duty. Bids will not be accepted from individuals or companies appearing on the DNR/FRD No-Bid List. This list contains the names of purchasers who previously failed to execute a contract within 21-days or who have a history of poor performance.

### 3. Preparation of Sealed Bids (5/16)

Bid Forms may be completed online thru Michigan DNR Timber Sale Online Bidding (OLB) at [www.michigan.gov/timberbidding](http://www.michigan.gov/timberbidding) or by completing the hardcopy Bid Form found in the Timber Sale Prospectus . Hardcopy Bid Forms shall be manually signed in ink. Registration in OLB is considered your 'signature' for all bids submitted thru that system. Bid prices must be entered for each species and product in the Bid Price column for all material subject to bidding and all fill-in blanks must be completed. If erasures or other changes appear on the hardcopy Bid Form, each erasure or change must be initialed by the person signing the bid.

### 4. Submission of Sealed Bids (5/16)

Bid forms may be obtained from the Unit Manager or thru OLB. Bids may be submitted hardcopy or thru OLB. All hardcopy bids must be submitted on the bid form and in an envelope clearly identified as described in this section. NOTE: Only one bid form per bid envelope. Sealed bids must be submitted to the Unit office designated in the prospectus and must be submitted at or prior to the time established in the prospectus. The envelope should show on the outside (a) the sale name or number and (b) the date and time of bid opening, as shown in the prospectus. Bids received after the time specified in the sale prospectus are late bids and will be rejected.

It is possible for a bidder to submit multiple bids on a single sale. For example, a bid may be submitted hardcopy and a bid may be submitted thru OLB. Or, two bidders from the same company could both submit bids on the same sale. If this were to happen, the State would accept all bids received and award the contract accordingly. All bidding and contractual requirements would apply to all bids received.

### 5. Public Opening of Sealed Bids (7/16)

If conditions permit, the sealed bids will be publicly opened and posted at the time and place set in the prospectus.

If a bidder, present at a bid opening, has submitted bids on more than one sale, that bidder may withdraw their unopened bid envelopes or announce the withdrawal of their online bid after being declared the successful bidder on one sale.

### 6. Award of Contract (1/11)

Award of the contract will be made to the Bidder whose bid, conforming to the prospectus, is most advantageous to the State of Michigan on the basis of total value at rates bid for the estimated quantities. The State reserves the right to reject any bid or waive any minor irregularity in bids received. A written award mailed (or otherwise furnished) to the successful Bidder shall be deemed to result in a binding contract without further action by either party.

### 7. Down Payment (1/11)

The Bidder to whom award is made must make a down payment within 21 days of the sale award. The amount of the down payment will be calculated as shown in the Bond and Payment Schedule of this prospectus. Only cash may be used to meet this requirement.

### 8. Performance Security (1/11)

As guarantee of faithful performance, a cash bond, certificate of deposit, surety bond or irrevocable letter of credit (LOC) is required within 21 days of the sale award. The amount of the performance security is shown in the Bond and

Payment Schedule of this prospectus. If an LOC or surety is used, the coverage must extend for at least 6 months beyond the contract expiration.

#### 9. Worker's Compensation (10/22)

Purchaser shall obtain worker's compensation insurance to cover claims under Michigan's Worker's Disability Compensation Act of 1969 or similar employee benefit act of any other state applicable to an employee. Verification of Worker's Disability Compensation Act Compliance must be completed and submitted within 21 days of contract award and prior to the issuance of the timber sale contract. In addition, if applicable, Notice of Exclusion or Certificate of Insurance must also be submitted.

#### 10. Timber Sale Contract (10/22)

Additional conditions and requirements common to all timber sales are listed on the timber sale contract (R4031) and are available on line at [www.michigan.gov/timber](http://www.michigan.gov/timber). Contact the Unit Manager for additional information or a sample contract. Within 21 days of the date of the award letter, the bidder must sign the contract and provide the required down payment, performance security, and verification of worker's disability compensation. The down payment and performance security shall be in accordance with the provisions of the timber sale contract, in the sums stated in this prospectus. If these actions are not taken, then the Bidder, the Bidder's corporation, and the corporation's principals may not be permitted to bid on State timber sales for a period of 3 months after the first offense, 6 months after the second offense, and 1 year after the third offense. An offense will only be counted against the Bidder for 5 years. In addition, the Bidder certifies that if awarded this contract, the Bidder will complete the timber sale contract in accordance with its terms and any modifications thereof including requirements to purchase, cut, and remove the included timber by the expiration date.

Payment Unit values in the State Forest Timber Sale Contract are calculated based on the advertised value of the Payment Unit as a percentage of the total advertised value of the contract. The advertised value of each Payment Unit is given in the Description of Timber by Payment Unit table on the Timber Sale Information page. For example, if the value of Payment Unit 1 is advertised as \$1,500 and the total Timber Sale value is advertised as \$10,000, the contract price for Payment Unit 1 will be 15% of the total bid price ( $\$1,500/\$10,000 * 100$ ).

#### 11. Disclaimer of Estimates and Bidder's Warranty of Inspection (10/22)

Before submitting this bid, the Bidder is advised and cautioned to inspect the sale area, review the requirements of the sale contract, and take other steps as may be reasonably necessary to ascertain the location, estimated volumes, construction estimates, and operating costs of the proposed sale. Failure to do so will not relieve the Bidder from responsibility for completing the contract.

The Bidder warrants that this bid is submitted solely on the basis of the Bidder's examination and inspection of the quality and quantity of the timber offered for sale and the Bidder's opinion of the value thereof and the costs of recovery. No reliance should be placed on the State of Michigan's estimates of timber quality, quantity or costs of recovery. Bidder further acknowledges that the State of Michigan: (i) expressly disclaims any warranty of fitness of timber for any purpose; (ii) offers this timber as is without any warranty of quality (merchantability) or quantity and (iii) expressly disclaims any warranty as to the quantity or quality of timber sold.

#### 12. Certification and Chain-of-Custody (10/22)

Unless otherwise indicated in the contract under section 7 – Other Conditions of the Sale Specific Conditions & Requirements, the area encompassed by this timber sale is certified to the standards of the Forest Stewardship Council (FSC) - Certificate #SCS-FM/COC-00090N and the Sustainable Forestry Initiative (SFI) - Certificate #NSF-SFIS-5Y031-SF5. Forest products from this sale may be delivered to the mill as "FSC 100% and / or SFI certified" as long as the contractor hauling the forest products is chain-of-custody (COC) certified or covered under a COC certificate from the destination mill. The purchaser is responsible for maintaining COC after leaving the sale area.

#### 13. Good Neighbor Authority (GNA) Requirements (10/22)

If the name of this timber sales contains the acronym GNA, it is authorized by the Good Neighbor Authority (GNA) and covered by various agreements between the U.S. Forest Service and the State. The timber sale occurs on federal land and the following conditions apply:

GNA contracts on US Forest Service land will not be awarded to purchasers on the Federal list of excluded parties. The System for Award Management (SAM) will be checked for active excluded parties prior to award of contract. In

addition, the Bidder to whom award is made must complete an Assurance Regarding Felony Conviction or Tax Delinquent Status for Corporate Applicants (AD-3031).

14. Good Neighbor Authority (GNA) Requirements, con't (10/22)

Bidder certifies, by signing this bid form, that to the best of Bidder's knowledge that the following representations are accurate and complete.

- a. That the Bidder and its principals are not presently debarred, suspended, proposed for debarment, declared ineligible, or voluntary excluded from timber sales (covered transactions) by any Federal department or agency.
- b. That the Bidder and its principals have not within a 3-year period preceding this bid been convicted of or had a civil judgment rendered against them for commission of fraud or a criminal offense in connection with obtaining , attempting to obtain, or performing a public (Federal, State, or local) transaction or contract under a public transaction; violation of Federal or State antitrust statutes or commission of embezzlement, theft, forgery, bribery, falsification or destruction of records, making false statements, or receiving stolen property.
- c. That the Bidder and its principals are not presently indicted for or otherwise criminally or civilly charged by a governmental entity (Federal, State, or local) with commission of any of the offenses enumerated in paragraph b of this certification.
- d. That the Bidder and its principals have not within a 3-year period preceding this bid had one or more public transactions (Federal, State, or local) terminated for breach or default of a timber or forest product contract.

Bidders that cannot certify this requirement, in whole or in part, shall submit an explanation with their bid.

Scott Bowen  
Director

# TIMBER SALE INFORMATION

Just A Taste Breakup (71-002-26)  
T22N, R01W, SEC. 23; T22N, R01W, SEC. 24.  
Roscommon County (Advertised Price \$103,985.45)

SALE NOTE: This sale has Class A road access.

A timber sale contract for this lump sum, sealed bid timber sale will be awarded to the responsible bidder offering the highest sealed bid price. All units of volume listed below were estimated using the Inventory Manager computer program and the new Michigan taper model. Bids must be at or above the following advertised price for each product and species:

<u>PRODUCTS &amp; SPECIES</u>	<u>ESTIMATED UNITS*</u>	<u>ADVERTISED PRICE</u>
Sawtimber		
B. T. Aspen	107.9 MBF	\$ 80.00 / MBF
Black/Red (Hybrid) Oak	103.5 MBF	\$ 128.00 / MBF
Red Oak	12.3 MBF	\$ 135.00 / MBF
White Oak	8.6 MBF	\$ 77.00 / MBF
Pulpwood		
Mixed Aspen	1,628 Cords	\$ 33.35 / Cord
Mixed Hardwood	194 Cords	\$ 21.70 / Cord
Mixed Oak	1,083 Cords	\$ 18.75 / Cord
Red Pine	2 Cords	\$ 42.50 / Cord
White Pine	26 Cords	\$ 34.15 / Cord

\* The total volume is statistically estimated within plus (+) or minus (-) 14.86 percent. There are an estimated 3,480 cords on this timber sale, plus or minus 517 cords at the 95% confidence level. The estimated units are final and not subject to adjustment. Prospective bidders are urged to examine this timber and to make their own estimates of quantity and quality.

## **BOND AND PAYMENT SCHEDULE:**

1. A bond in the amount of \$5,199.00 to insure faithful performance of the conditions of the contract will be deposited by the successful bidder within 21 days of the sale award.
2. Cutting in any sale or unit without the required advance payment would be considered a trespass.
3. Total payment must be paid in advance or according to the following schedule :
  - (a) Ten percent (10%) of the sale value must be paid within 21 days of the sale award.
  - (b) The 10% down payment will be credited towards the first unit cut.
  - (c) Payment for each of the following units must be made before cutting begins in that unit:

PAYMENT UNIT NUMBER	PERCENT OF TOTAL SALE VALUE
01	19.9%
02	23.4%
03	15.6%
04	9.5%
05	12.5%
06	19.1%
4. If no cutting takes place, the 10% down payment will not be refunded.
5. Operations on the contract issued will terminate on 03/31/2028.

## **SALE STATISTICS**

Volumes were calculated in cubic feet using the Michigan taper model. Cubic foot volume includes all wood inside bark for the product indicated. For display purposes, cubic feet were converted to cords and MBF using a simple conversion factor, e.g. 79 cubic feet per cord and 185 cubic feet per MBF. The cubic foot volumes are precise; the cords and MBF volumes are not. Cubic foot volume cannot be directly converted to cords or boards with precision.

## **SALE VOLUMES**

The total estimated sale volume may not equal the sum of the species/products due to the nature of statistical calculations associated with double sampling methodology.

VOLUME			STATISTICAL RANGE IN CORDS	
TOTAL CUBIC FEET	TOTAL CORDS	PERCENT ERROR	MINIMUM	MAXIMUM
274,917	3,480	14.86%	2,963	3,997

**VDU VOLUMES**

A VDU is a Volume Determination Unit. Volumes and their associated statistics are calculated at the VDU level and summarized to the sale level. There is often a one to one relationship between a VDU and a Payment Unit, but not always, depending on the cruise design. Refer to the VDU TO PAYMENT UNIT table.

	VOLUME			RANGE IN CORDS	
VDU	TOTAL CUBIC FEET	TOTAL CORDS	PERCENT ERROR	MINIMUM	MAXIMUM
43	116,124	1,470	26.73%	1,077	1,863
63	59,921	758	33.13%	507	1,010
66	39,956	506	33.61%	336	676
69	25,872	327	40.25%	196	459
73	33,045	418	26.89%	306	531
TOTAL:	274,917	3,480		2,422	4,538

**VDU TO PAYMENT UNIT**

When a VDU is associated with more than one Payment Unit (PU), the VDU volumes are assigned to the PU based on acres of the VDU within the PU.

VDU	VDU ACRES	PU	PU ACRES
TOTAL:			

**DESCRIPTION OF TIMBER BY PAYMENT UNIT (PU)**

PU	MARKET GROUP	PRODUCT	QUANTITY	UNIT	ACRES	ADVERTISE PRICE
1	B. T. Aspen	Sawtimber	31.8	MBF	17.8	\$20,708.55
	Black/Red (Hybrid		2.8	MBF		
	Red Oak		1.3	MBF		
	Mixed Aspen	Pulpwood	443	Cords		
	<i>Quaking Aspen</i>	<i>Sawtimber</i>	<i>0.4</i>	<i>MBF</i>		
	<i>B. T. Aspen</i>	<i>Pulpwood</i>	<i>441</i>	<i>Cords</i>		
	<i>Quaking Aspen</i>		<i>1</i>	<i>Cords</i>		
	Mixed Hardwood		12	Cords		
	<i>Red Maple</i>		12	Cords		
	Mixed Oak		133	Cords		
	<i>/Red (Hybrid) Oak</i>		<i>112</i>	<i>Cords</i>		
	<i>Red Oak</i>		<i>10</i>	<i>Cords</i>		
	<i>White Oak</i>		<i>11</i>	<i>Cords</i>		
	White Pine		3	Cords		
	<i>White Pine</i>		<i>3</i>	<i>Cords</i>		
2	B. T. Aspen	Sawtimber	37.5	MBF	21.0	\$24,433.50
	Black/Red (Hybrid		3.4	MBF		
	Red Oak		1.5	MBF		
	Mixed Aspen	Pulpwood	522	Cords		
	<i>Quaking Aspen</i>	<i>Sawtimber</i>	<i>0.4</i>	<i>MBF</i>		
	<i>B. T. Aspen</i>	<i>Pulpwood</i>	<i>520</i>	<i>Cords</i>		
	<i>Quaking Aspen</i>		<i>1</i>	<i>Cords</i>		
	Mixed Hardwood		15	Cords		
	<i>Red Maple</i>		15	Cords		
	Mixed Oak		156	Cords		
	<i>/Red (Hybrid) Oak</i>		<i>133</i>	<i>Cords</i>		
	<i>Red Oak</i>		<i>11</i>	<i>Cords</i>		
	<i>White Oak</i>		<i>12</i>	<i>Cords</i>		
	White Pine		4	Cords		
	<i>White Pine</i>		<i>4</i>	<i>Cords</i>		
3	Black/Red (Hybrid	Sawtimber	91.8	MBF	27.1	\$16,171.45
	White Oak		6.0	MBF		
	Mixed Aspen	Pulpwood	3	Cords		
	<i>B. T. Aspen</i>		<i>3</i>	<i>Cords</i>		
	Mixed Hardwood		17	Cords		
	<i>Red Maple</i>	<i>Sawtimber</i>	<i>3.8</i>	<i>MBF</i>		
	<i>Red Maple</i>	<i>Pulpwood</i>	<i>9</i>	<i>Cords</i>		
	Mixed Oak		147	Cords		
	<i>/Red (Hybrid) Oak</i>		<i>107</i>	<i>Cords</i>		
	<i>White Oak</i>		<i>40</i>	<i>Cords</i>		
	Red Pine		2	Cords		
	White Pine		19	Cords		
	<i>White Pine</i>	<i>Sawtimber</i>	<i>3.6</i>	<i>MBF</i>		
	<i>White Pine</i>	<i>Pulpwood</i>	<i>12</i>	<i>Cords</i>		
4	B. T. Aspen	Sawtimber	2.4	MBF	11.9	\$9,902.70
	Black/Red (Hybrid		0.7	MBF		
	Mixed Aspen	Pulpwood	246	Cords		
	<i>B. T. Aspen</i>		<i>246</i>	<i>Cords</i>		
	Mixed Hardwood		10	Cords		
	<i>Red Maple</i>		<i>10</i>	<i>Cords</i>		
	Mixed Oak		64	Cords		
	<i>/Red (Hybrid) Oak</i>		<i>64</i>	<i>Cords</i>		
5	B. T. Aspen	Sawtimber	4.7	MBF	18.9	\$12,954.50
	Black/Red (Hybrid		4.8	MBF		
	Red Oak		2.5	MBF		
	White Oak		2.6	MBF		

**DESCRIPTION OF TIMBER BY PAYMENT UNIT (PU), CON'T**

PU	MARKET GROUP	PRODUCT	QUANTITY	UNIT	ACRES	ADVERTISE PRICE
5 con't	Mixed Aspen	Pulpwood	170	Cords		
	<i>B. T. Aspen</i>		170	<i>Cords</i>		
	Mixed Hardwood		32	Cords		
	<i>Red Maple</i>		32	<i>Cords</i>		
	Mixed Oak		270	Cords		
	<i>/Red (Hybrid) Oak</i>		204	<i>Cords</i>		
	<i>Red Oak</i>		59	<i>Cords</i>		
	<i>White Oak</i>		7	<i>Cords</i>		
6	B. T. Aspen	Sawtimber	31.5	MBF	18.0	\$19,814.75
	Red Oak		7.0	MBF		
	Mixed Aspen	Pulpwood	244	Cords		
	<i>Quaking Aspen</i>	<i>Sawtimber</i>	4.0	<i>MBF</i>		
	<i>B. T. Aspen</i>	<i>Pulpwood</i>	223	<i>Cords</i>		
	<i>Quaking Aspen</i>		13	<i>Cords</i>		
	Mixed Hardwood		108	Cords		
	<i>Red Maple</i>	<i>Sawtimber</i>	2.4	<i>MBF</i>		
	<i>Black Cherry</i>	<i>Pulpwood</i>	3	<i>Cords</i>		
	<i>Red Maple</i>		100	<i>Cords</i>		
	Mixed Oak		313	Cords		
	<i>/Red (Hybrid) Oak</i>		70	<i>Cords</i>		
	<i>Red Oak</i>		243	<i>Cords</i>		
TOTAL:			232.3	MBF		
TOTAL:			2,933	Cords		

## **Sale Specific Conditions & Requirements**

**Sale Name: Just A Taste Breakup**

**Sale Number: 71-002-26 Seq#: 1**

### **1 - Sale Area**

#### **1.2 - Boundaries**

##### **1.2.1 - Painted Boundaries (9/19)**

The sale boundary and Payment Unit boundaries are marked and identified by red and yellow paint. Exterior sale boundary lines against state are marked with red paint. Interior Payment Unit boundaries are marked with yellow paint. Retention patches are marked with red paint; no harvesting activities may occur within these areas. Yellow painted trees designating an interior Payment Unit boundary are only to be cut when all surrounding Payment Units have been paid.

### **2 - Timber Specifications**

#### **2.1 - Included Timber**

##### **2.1.1 - Clearcut Unit(s) with Unmerchantable Trees (6/14)**

Within Payment Unit(s) 1-2 and 4-6, cut all trees that are two (2) inches or more at DBH. In addition, within Payment Unit 4, do not cut any pine.

##### **2.1.7 - Leave Tree Marked Unit(s) (6/14)**

Within Payment Unit(s) 3, cut all trees that are two (2) inches or more at DBH, except trees marked with green paint above and below stump height.

#### **2.2 - Utilization**

##### **2.2.3 - Stump Heights (12/24)**

Stump heights within the Sale Area shall not exceed 12 inches for trees greater than 10 inches at DBH and four (4) inches for trees smaller than 10 inches at DBH.

### **3 - Payments**

#### **3.3 - Pre-measured Sales**

##### **3.3.4 - Dividing Payment Units (7/14)**

Payment Unit(s) may be divided at the request of the Purchaser and upon approval of the Unit Manager. Dividing Payment Units is a contract modification which requires a Timber Sale Contract Amendment.

### **4 - Transportation**

#### **4.1 - Construction**

##### **4.1.6 - Road Construction (4/24)**

Construction of new roads or improvements of existing roads shall be done in such a way as to minimize the environmental and visual impacts. Merchantable trees shall be cut and utilized unless otherwise directed. Non-merchantable trees shall be severed and laid flat on the ground. Slash shall be scattered, not left in windrows, and kept a minimum of 10 feet back from the road edge. Stumps shall be set upright, not left on edge, and be moved at least 10 feet away from the road edge. Disturbed soil shall be feathered into the woods and not left in berms or windrows.

##### **4.1.7 - Road Closure (10/11)**

All new roads built into the sale must be blocked to vehicle traffic upon completion of the sale. Overgrown roads that are reopened shall be considered new roads. In general, this will require constructing a four (4') foot high berm of stumps and logs covered with earth. These roads must be rendered impassable to cars and trucks. All stumps from road building and landing construction must be reserved to block any newly constructed roads upon completion of the sale. Contact the Sale Administrator for specific details of design and placement.

##### **4.1.11 - Permits (2/12)**

The Purchaser will secure any necessary highway permits that may be required.

#### **4.2 - Maintenance**

#### 4.2.3 - Road maintenance (8/13)

The following road maintenance may be needed: Within 60 days of completion of hauling, or if no hauling occurs for 60 days, the road must be maintained and graded. This includes cleaning of drainage areas, grading, crowning and filling with gravel, if necessary. Damages will be assessed if grading/repair does not occur.

#### 4.2.5 - Two Wheel Drive Condition (2/04)

All existing trail roads on and adjacent to the Sale Area must be passable by two-wheel drive traffic for the duration of the sale.

### 5 - Operations

#### 5.1 - Notification

##### 5.1.1 - Pre-sale Conference (10/25)

A pre-sale conference between the Purchaser and Sale Administrator is required prior to beginning any operations to determine landing and road locations. The Unit Manager or his/her representative must be contacted at least 2 days in advance to schedule the conference.

##### 5.1.4 - Post-Sale Conference (10/16)

A post-sale conference on site between the Purchaser and sale administrator is required 5 days prior to the completion of active logging operations to determine clean-up and repair of landings, road edges, and the fulfillment of other contract specifications.

#### 5.2 - Conduct of Operations

##### 5.2.1 - Slash

###### 5.2.1.8 - Slash Height (12/08)

No slash or tree tops may exceed 24 inches in height.

###### 5.2.1.11 - Slash for Reforestation (3/21)

If not chipped, the Sale Area shall be left with slash evenly distributed. Bunched tops within the cutting area shall be broken up and scattered. Stumps shall be cut low to the ground. Processing sites shall not be left with a compacted layer of slash; tops from these areas must be evenly scattered.

##### 5.2.3 - Operating Restrictions

###### 5.2.3.5 - Oak Wilt Restriction (1/18)

Within the Sale Area, unless changed by written agreement, cutting, skidding, hauling within the sale and brushing of access roads to the sale are not permitted during the period of April 15 to July 15. Operations may be allowed if specific steps are taken to prevent damaging uncut oak during the high-risk period. Those steps may include completing all road brushing before April 15 and clearing a tree-length buffer along uncut oak cover before April 15. This is necessary to reduce the spread of oak wilt. For more information, contact the Unit Manager or his/her representative.

###### 5.2.3.11 - Coppice Regeneration Protection (4/10)

Timber harvesting in any Payment Unit must be completed before significant sprouting occurs in that Payment Unit, so as to minimize damage to the new regeneration. Any post-harvest operations, such as chipping, must be completed before sprouting of regeneration occurs. If it is anticipated that chipping will be delayed, then tops shall be carried to one central location or left unchipped. The Unit Manager or his/her representative may cease such operations if sprouting occurs before the operation is complete. If more than 33% of newly sprouted seedlings are damaged, then damages of \$500 per acre will be charged.

##### 5.2.4 - Dead and Down Creation

###### 5.2.4.2 - Dead and Down Creation, Hare and Grouse (1/25)

To improve habitat for snowshoe hare, grouse, and other species, the Purchaser is to leave two (2) 10-inch diameter or larger log size pieces on the ground for every two (2) acres within Payment Units 1-2 and 4-6. They should be scattered throughout the Payment Units or positioned per the Sale Administrator's instructions. The logs should be placed so they overlap. These pieces should have a minimum length of ten (10) feet. They can be of any tree species and can be an un-merchantable piece of wood or a full tree.

#### 5.2.32 - Decking/Landing Restoration (9/13)

All decking and landing areas must have the surface area restored to a condition equal to or better than before. This is to ensure the proper regeneration of the stand. Wood debris, chips and "cookies" from trimmings must be removed or scattered away from landing and loading areas and may not be windrowed on the edge.

### 5.4 - Soil Protection

#### 5.4.3 - Erosion Control (12/08)

Skid trails or haul roads may require erosion control structures or berms per direction of the Unit Manager or his/her representative.

## 6 - Safety and Fire Prevention

### 6.2 - Signing

#### 6.2.1 - Road Posting (10/20)

The Purchaser is responsible for posting and maintaining caution signs on M-55 and Emery Road prior to beginning operations. The road must be posted at appropriate distances from the Sale Area to warn of logging activity and truck traffic. Signs must be removed when harvest operations are suspended or completed. The Purchaser will provide these signs.



**TIMBER SALE MAP**

This information provided by authority of Part 525, 1994 PA 451, as amended.

Sale Number

**71-002-26**

Date

**01/06/2026**

Forest Management Unit

Roscommon Mgt Unit

County

Roscommon

Mapped By: Martell

Cruised By: Martell, Lewicki, Ewald, Tyrann

Scale

**1:15,840**

Page

**1**

Of

**1**

Township  
22N

Range  
01W

Section(s) and  
Subdivision(s) Sec. 23 N1/2NE,SWNE; Sec. 24 N1/2NW,SESW,N1/2NE;

**Cover Type**

A = Aspen	J = Jack Pine	O = Oak	U = Upland Brush
B = Paper Birch	K = Rock	P = Lowland Poplar	UM = Upland Mix Forest
C = Cedar	L = Lowland Brush	Q = Mixed Swamp Conifer	V = Bog or Marsh
D = Treed Bog	LM = Lowland Mix Forest	R = Red Pine	W = White Pine
E = Swamp Hardwoods	M = Maple, Beech, Birch	S = Black Spruce	X = Non Stocked
F = Spruce/Fir	MC = Mixed Conifer	T = Tamarack	Y = Sand
G = Grass	MD = Mixed Deciduous	Z = Water	
H = Hemlock	N = Marsh		

**Density**

0 = Non Stocked	5 = Pole Timber Medium
1 = Seedling Sapling Poor	6 = Pole Timber Well
2 = Seedling Sapling Medium	7 = Saw Timber Poor
3 = Seedling Sapling Well	8 = Saw Timber Medium
4 = Pole Timber Poor	9 = Saw Timber Well

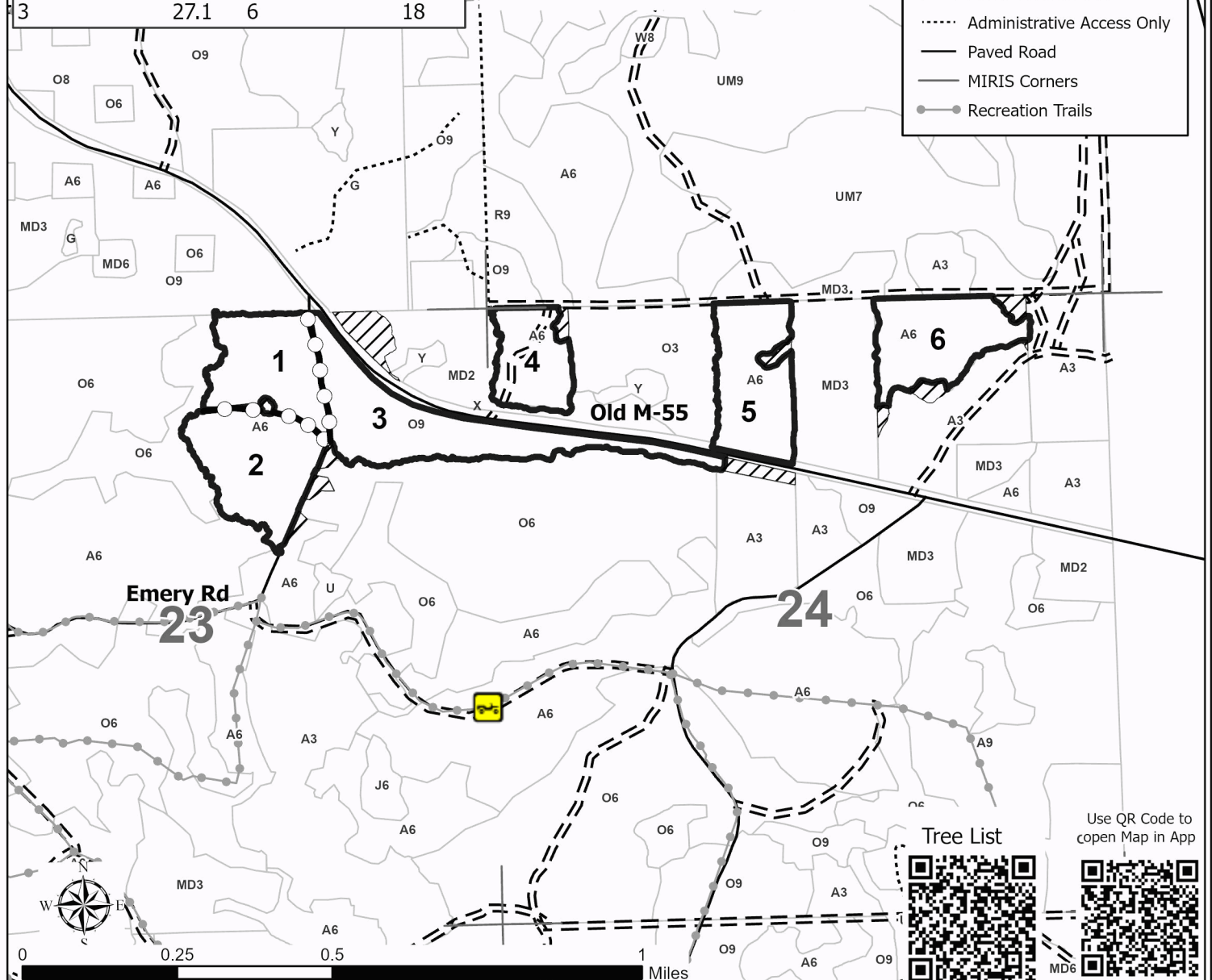
**Just A Taste Breakup**

**114.7 Acres**

Payment Unit Number	Acres	Payment Unit Number	Acres
1	17.8	4	11.9
2	21	5	18.9
3	27.1	6	18

**Legend**

- Against State (Red)
- Payment Unit (Yellow)
- Stand
- Retention
- Forest Access Route
- Administrative Access Only
- Paved Road
- MIRIS Corners
- Recreation Trails



**Tree List**



Use QR Code to  
open Map in App



## TIMBER SALE INFORMATION

### Jump Scare Pine Oak (71-013-25)

T22N, R01E, SEC. 1; T22N, R01E, SEC. 2; T23N, R01E, SEC. 35.  
Ogemaw County (Advertised Price \$265,427.25)

SALE NOTE: 225 combined acres of white pine thinnings and oak overstory removals located near the intersection of Dow rd and Saint Helen trl. Oak wilt Restrictions apply (see spec 5.2.3.4), and a round wood operation is required for the thinning units (see spec 2.2.6).

A recreation site such as a trail, pathway, or campground is within the sale area or the vicinity. Certain restrictions/specifications may be applicable including time restrictions.

A timber sale contract for this lump sum, sealed bid timber sale will be awarded to the responsible bidder offering the highest sealed bid price. All units of volume listed below were estimated using the Inventory Manager computer program and the new Michigan taper model. Bids must be at or above the following advertised price for each product and species:

<u>PRODUCTS &amp; SPECIES</u>	<u>ESTIMATED UNITS*</u>		<u>ADVERTISED PRICE</u>
Sawtimber			
Black Cherry	63.0	MBF	\$ 149.00 / MBF
Mixed Aspen	24.0	MBF	\$ 80.00 / MBF
Mixed Oak	1,068.0	MBF	\$ 128.00 / MBF
Red Maple	36.7	MBF	\$ 70.00 / MBF
Red Pine	40.6	MBF	\$ 104.00 / MBF
White Pine	374.1	MBF	\$ 80.00 / MBF
Pulpwood			
Mixed Aspen	370	Cords	\$ 33.35 / Cord
Mixed Hardwood	593	Cords	\$ 21.70 / Cord
Mixed Oak	1,020	Cords	\$ 18.75 / Cord
Red Pine	257	Cords	\$ 42.50 / Cord
White Pine	745	Cords	\$ 34.15 / Cord

\* The total volume is statistically estimated within plus (+) or minus (-) 9.66 percent. There are an estimated 6,748 cords on this timber sale, plus or minus 652 cords at the 95% confidence level. The estimated units are final and not subject to adjustment. Prospective bidders are urged to examine this timber and to make their own estimates of quantity and quality.

### **BOND AND PAYMENT SCHEDULE:**

1. A bond in the amount of \$13,271.00 to insure faithful performance of the conditions of the contract will be deposited by the successful bidder within 21 days of the sale award.
2. Cutting in any sale or unit without the required advance payment would be considered a trespass.
3. Total payment must be paid in advance or according to the following schedule :
  - (a) Ten percent (10%) of the sale value must be paid within 21 days of the sale award.
  - (b) The 10% down payment will be credited towards the first unit cut.
  - (c) Payment for each of the following units must be made before cutting begins in that unit:

<u>PAYMENT UNIT NUMBER</u>	<u>PERCENT OF TOTAL SALE VALUE</u>
01	44.1%
02	4.1%
03	3.9%
04	16.3%
05	2.7%
06	10.6%
07	1.5%
08	5.2%
09	0.8%
10	7.3%
11	3.5%

4. If no cutting takes place, the 10% down payment will not be refunded.
5. Operations on the contract issued will terminate on 06/30/2028.

### **SALE STATISTICS**

Volumes were calculated in cubic feet using the Michigan taper model. Cubic foot volume includes all wood inside bark for the product indicated. For display purposes, cubic feet were converted to cords and MBF using a simple conversion factor, e.g. 79 cubic feet per cord and 185 cubic feet per MBF. The cubic foot volumes are precise; the cords and MBF volumes are not. Cubic foot volume cannot be directly converted to cords or boards with precision.

**SALE VOLUMES**

The total estimated sale volume may not equal the sum of the species/products due to the nature of statistical calculations associated with double sampling methodology.

VOLUME			STATISTICAL RANGE IN CORDS	
TOTAL CUBIC FEET	TOTAL CORDS	PERCENT ERROR	MINIMUM	MAXIMUM
533,075	6,748	9.66%	6,096	7,400

**VDU VOLUMES**

A VDU is a Volume Determination Unit. Volumes and their associated statistics are calculated at the VDU level and summarized to the sale level. There is often a one to one relationship between a VDU and a Payment Unit, but not always, depending on the cruise design. Refer to the VDU TO PAYMENT UNIT table.

	VOLUME			RANGE IN CORDS	
VDU	TOTAL CUBIC FEET	TOTAL CORDS	PERCENT ERROR	MINIMUM	MAXIMUM
70	40,259	510	38.81%	312	707
71	45,346	574	24.93%	431	717
74	21,182	268	30.14%	187	349
76	8,819	112	48.21%	58	165
79	50,900	644	30.48%	448	841
80	15,344	194	53.73%	90	299
91	77,179	977	18.37%	798	1,156
92	52,089	659	20.37%	525	794
93	221,957	2,810	18.48%	2,290	3,329
TOTAL:	533,075	6,748		5,139	8,357

**VDU TO PAYMENT UNIT**

When a VDU is associated with more than one Payment Unit (PU), the VDU volumes are assigned to the PU based on acres of the VDU within the PU.

VDU	VDU ACRES	PU	PU ACRES
TOTAL:			

**DESCRIPTION OF TIMBER BY PAYMENT UNIT (PU)**

PU	MARKET GROUP	PRODUCT	QUANTITY	UNIT	ACRES	ADVERTISE PRICE
1	Black Cherry	Sawtimber	63.0	MBF	71.5	\$116,880.15
	<i>Pin Cherry</i>		63.0	<i>MBF</i>		
	Mixed Aspen		0.9	MBF		
	<i>Quaking Aspen</i>		0.9	<i>MBF</i>		
	Mixed Oak		575.6	MBF		
	<i>/Red (Hybrid) Oak</i>		3.2	<i>MBF</i>		
	<i>Red Oak</i>		542.8	<i>MBF</i>		
	<i>White Oak</i>		29.6	<i>MBF</i>		
	Red Maple		16.7	MBF		
	White Pine		145.0	MBF		
	Mixed Aspen	Pulpwood	61	Cords		
	<i>B. T. Aspen</i>		52	<i>Cords</i>		
	<i>Quaking Aspen</i>		9	<i>Cords</i>		
	Mixed Hardwood		274	Cords		
	<i>Pin Cherry</i>		57	<i>Cords</i>		
	<i>Red Maple</i>		217	<i>Cords</i>		
	Mixed Oak		499	Cords		
	<i>/Red (Hybrid) Oak</i>		8	<i>Cords</i>		
	<i>Red Oak</i>		433	<i>Cords</i>		
	<i>White Oak</i>		58	<i>Cords</i>		
	Red Pine		35	Cords		
	White Pine		63	Cords		
2	Mixed Oak	Sawtimber	5.7	MBF	26.3	\$10,834.60
	<i>/Red (Hybrid) Oak</i>		1.9	<i>MBF</i>		
	<i>Red Oak</i>		3.6	<i>MBF</i>		
	<i>White Oak</i>		0.2	<i>MBF</i>		
	Red Maple	Pulpwood	1.7	MBF		
	White Pine		45.2	MBF		
	Mixed Hardwood		60	Cords		
	<i>Black Cherry</i>		8	<i>Cords</i>		
	<i>Red Maple</i>		52	<i>Cords</i>		
	Mixed Oak		20	Cords		
	<i>/Red (Hybrid) Oak</i>		5	<i>Cords</i>		
	<i>Red Oak</i>		5	<i>Cords</i>		
	<i>White Oak</i>		10	<i>Cords</i>		
	Red Pine		14	Cords		
	White Pine		120	Cords		
3	Mixed Oak	Sawtimber	5.6	MBF	25.3	\$10,392.05
	<i>/Red (Hybrid) Oak</i>		1.9	<i>MBF</i>		
	<i>Red Oak</i>		3.5	<i>MBF</i>		
	<i>White Oak</i>		0.2	<i>MBF</i>		
	Red Maple	Pulpwood	1.6	MBF		
	White Pine		43.4	MBF		
	Mixed Hardwood		58	Cords		
	<i>Black Cherry</i>		7	<i>Cords</i>		
	<i>Red Maple</i>		51	<i>Cords</i>		
	Mixed Oak		17	Cords		
	<i>/Red (Hybrid) Oak</i>		4	<i>Cords</i>		
	<i>Red Oak</i>		4	<i>Cords</i>		
	<i>White Oak</i>		9	<i>Cords</i>		
	Red Pine		13	Cords		
	White Pine		116	Cords		
4	Mixed Oak	Sawtimber	250.7	MBF	22.7	\$43,296.05
	<i>/Red (Hybrid) Oak</i>		2.4	<i>MBF</i>		
	<i>Red Oak</i>		233.9	<i>MBF</i>		
	<i>White Oak</i>		14.4	<i>MBF</i>		

## DESCRIPTION OF TIMBER BY PAYMENT UNIT (PU), CON'T

PU	MARKET GROUP	PRODUCT	QUANTITY	UNIT	ACRES	ADVERTISE PRICE
4 con't	Red Pine	Sawtimber	36.3	MBF		
	White Pine		12.2	MBF		
	Mixed Hardwood	Pulpwood	10	Cords		
	Red Maple		10	Cords		
	Mixed Oak		194	Cords		
	/Red (Hybrid) Oak		1	Cords		
	Red Oak		177	Cords		
	White Oak		16	Cords		
	Red Pine		17	Cords		
	White Pine		55	Cords		
5	Mixed Oak	Sawtimber	28.1	MBF	5.2	\$7,258.70
	/Red (Hybrid) Oak		1.5	MBF		
	Red Oak		23.9	MBF		
	White Oak		2.7	MBF		
	Red Pine		3.1	MBF		
	White Pine		19.2	MBF		
	Mixed Aspen	Pulpwood	3	Cords		
	B. T. Aspen		3	Cords		
	Mixed Hardwood		11	Cords		
	Red Maple		11	Cords		
	Mixed Oak		44	Cords		
	/Red (Hybrid) Oak		15	Cords		
	Red Oak		27	Cords		
	White Oak		2	Cords		
	Red Pine		3	Cords		
	White Pine		15	Cords		
6	Mixed Oak	Sawtimber	177.8	MBF	13.8	\$28,115.35
	Red Oak		158.7	MBF		
	White Oak		19.1	MBF		
	Red Maple		10.9	MBF		
	Mixed Hardwood	Pulpwood	6	Cords		
	Red Maple		6	Cords		
	Mixed Oak		147	Cords		
	Red Oak		127	Cords		
	White Oak		20	Cords		
	White Pine		50	Cords		
7	Mixed Oak	Sawtimber	5.1	MBF	6.8	\$3,877.75
	Red Oak		1.2	MBF		
	White Oak		3.9	MBF		
	Red Pine		1.2	MBF		
	White Pine		10.8	MBF		
	Mixed Oak	Pulpwood	15	Cords		
	Red Oak		6	Cords		
	White Oak		9	Cords		
	Red Pine		1	Cords		
	White Pine		56	Cords		
8	Mixed Aspen	Sawtimber	11.8	MBF	12.1	\$13,877.05
	B. T. Aspen		11.8	MBF		
	Red Maple		0.4	MBF		
	White Pine		10.4	MBF		
	Mixed Aspen	Pulpwood	219	Cords		
	B. T. Aspen		219	Cords		
	Mixed Hardwood		91	Cords		
	Black Cherry		10	Cords		
	Red Maple		81	Cords		
	Mixed Oak		5	Cords		

**DESCRIPTION OF TIMBER BY PAYMENT UNIT (PU), CON'T**

PU	MARKET GROUP	PRODUCT	QUANTITY	UNIT	ACRES	ADVERTISE PRICE
8 con't	<i>Red Oak</i>	<i>Pulpwood</i>	5	<i>Cords</i>		
	Red Pine		29	Cords		
	White Pine		43	Cords		
9	Mixed Aspen	Sawtimber	1.9	MBF	1.9	\$2,195.00
	<i>B. T. Aspen</i>		1.9	<i>MBF</i>		
	Red Maple		0.1	MBF		
	White Pine		1.6	MBF		
	Mixed Aspen	Pulpwood	34	Cords		
	<i>B. T. Aspen</i>		34	<i>Cords</i>		
	Mixed Hardwood		14	Cords		
	<i>Black Cherry</i>		1	<i>Cords</i>		
	<i>Red Maple</i>		13	<i>Cords</i>		
	Mixed Oak		1	Cords		
	<i>Red Oak</i>		1	<i>Cords</i>		
	Red Pine		5	Cords		
	White Pine		7	Cords		
10	Mixed Aspen	Sawtimber	2.5	MBF	22.9	\$19,339.95
	<i>B. T. Aspen</i>		2.5	<i>MBF</i>		
	Red Maple		4.7	MBF		
	White Pine		77.7	MBF		
	Mixed Aspen	Pulpwood	39	Cords		
	<i>B. T. Aspen</i>		39	<i>Cords</i>		
	Mixed Hardwood		60	Cords		
	<i>Black Cherry</i>		3	<i>Cords</i>		
	<i>Red Maple</i>		57	<i>Cords</i>		
	Mixed Oak		25	Cords		
	<i>/Red (Hybrid) Oak</i>		3	<i>Cords</i>		
	<i>Red Oak</i>		18	<i>Cords</i>		
	<i>White Oak</i>		4	<i>Cords</i>		
	Red Pine		114	Cords		
	White Pine		137	Cords		
11	Mixed Aspen	Sawtimber	6.9	MBF	16.4	\$9,360.60
	<i>B. T. Aspen</i>		6.9	<i>MBF</i>		
	Mixed Oak		19.4	MBF		
	<i>/Red (Hybrid) Oak</i>		11.1	<i>MBF</i>		
	<i>Red Oak</i>		4.2	<i>MBF</i>		
	<i>White Oak</i>		4.1	<i>MBF</i>		
	Red Maple		0.6	MBF		
	White Pine		8.6	MBF		
	Mixed Aspen	Pulpwood	14	Cords		
	<i>B. T. Aspen</i>		14	<i>Cords</i>		
	Mixed Hardwood		9	Cords		
	<i>Red Maple</i>		9	<i>Cords</i>		
	Mixed Oak		53	Cords		
	<i>/Red (Hybrid) Oak</i>		13	<i>Cords</i>		
	<i>Red Oak</i>		15	<i>Cords</i>		
	<i>White Oak</i>		25	<i>Cords</i>		
	Red Pine		26	Cords		
	White Pine		83	Cords		
TOTAL:			1,606.4	MBF		
TOTAL:			2,985	Cords		

## Sale Specific Conditions & Requirements

**Sale Name: Jump Scare Pine Oak**

**Sale Number: 71-013-25 Seq#: 1**

### 1 - Sale Area

#### 1.2 - Boundaries

##### 1.2.1 - Painted Boundaries (9/19)

The sale boundary and Payment Unit boundaries are marked and identified by blue, red and yellow paint or are unpainted and identified by a road. Exterior sale boundary lines against private property are marked with blue paint, except for the western boundaries of Payment Units 2 & 4 which are unpainted and designated by White Ridge Trl, the northern boundary of Payment Unit 8 which is unpainted and designated by the forest two-track, and the southern boundary of Payment Unit 11 which is unpainted and designated by the state forest road. Exterior sale boundary lines against state are marked with red paint. Interior Payment Unit boundaries are marked with yellow paint, except for the Payment Unit lines between Payment Units 1, 2 and 3 and units 2, 3 and 4, which are painted red. Retention patches are marked with red paint; no harvesting activities may occur within these areas. The painted boundary line trees are not Included Timber and are to be protected unless marked with orange paint. Yellow and red painted trees designating an interior Payment Unit boundary are only to be cut when all surrounding Payment Units have been paid.

### 2 - Timber Specifications

#### 2.1 - Included Timber

##### 2.1.1 - Clearcut Unit(s) with Unmerchantable Trees (6/14)

Within Payment Unit(s) 9, cut all trees that are two (2) inches or more at DBH, except do not cut any trees marked with green paint or any pine 26 inches or greater at DBH.

##### 2.1.3 - Cut Tree Marked Unit(s) (12/08)

Within Payment Unit(s) 2, 3, 7 and 11, all trees are designated for cutting when marked with orange paint above and below stump height, regardless of merchantability.

##### 2.1.5 - Overstory Removal Unit(s) (8/11)

Within Payment Unit(s) 1, 4, 5 and 6, all trees with a DBH of 6 inches or greater which meet minimum piece specifications in 2.2 Utilization, are designated for cutting, except do not cut any pine 26 inches or greater at DBH.

##### 2.1.7 - Leave Tree Marked Unit(s) (6/14)

Within Payment Unit(s) 8 and 10, all trees with a DBH of 4 inches or greater, which meet minimum piece specifications in 2.2 Utilization, are designated for cutting, except do not cut any trees marked with green paint above and below stump height. Also, do not cut any pine with a DBH of 26 inches or greater.

##### 2.1.11 - Description of Timber Note (2/04)

Note that black cherry sawtimber is a mix of black cherry and pin cherry.

#### 2.2 - Utilization

##### 2.2.3 - Stump Heights (12/24)

Stump heights within the Sale Area shall not exceed 12 inches for trees greater than 10 inches at DBH and six (6) inches for trees smaller than 10 inches at DBH.

##### 2.2.6 - Roundwood Operation Required (3/21)

The skidding of whole trees or tree segments with limbs attached is prohibited within Payment Unit(s) 7-11. All products must be produced as roundwood and forwarded to existing roads or landing areas in final product length.

### 3 - Payments

#### 3.3 - Pre-measured Sales

##### 3.3.4 - Dividing Payment Units (7/14)

Payment Unit(s) may be divided at the request of the Purchaser and upon approval of the Unit Manager. Dividing Payment Units is a contract modification which requires a Timber Sale Contract Amendment. There will be only one division per

Payment Unit.

### 3.4 - Damaged Timber

#### 3.4.1 - Damaged Timber (12/24)

General Condition and Requirement 3.4 Damaged Timber, defines liquidated damages for undesignated live merchantable trees which are cut or injured. In addition, extreme care should be taken to avoid damage to tree seedlings and saplings.

Within the Sale Area, if more than 25% of the tree seedlings or saplings (1/4" to 4.5" DBH) within a specified portion of the Sale Area are damaged, liquidated damages will be assessed at \$500 per acre for all acreage within that specified portion of the Sale Area that was damaged.

No damage is acceptable to undesignated live merchantable trees. Within the Sale Area, if more than 10% of trees (> 4.5" DBH) within a specified area of the sale are damaged, liquidated damages will be assessed for all trees damaged. Rates will be in accordance with General Condition and Requirement 3.4 Damaged Timber.

## 4 - Transportation

### 4.1 - Construction

#### 4.1.6 - Road Construction (4/24)

Construction of new roads or improvements of existing roads shall be done in such a way as to minimize the environmental and visual impacts. Merchantable trees shall be cut and utilized unless otherwise directed. Non-merchantable trees shall be severed and laid flat on the ground. Slash shall be scattered, not left in windrows, and kept a minimum of 10 feet back from the road edge. Stumps shall be set upright, not left on edge, and be moved at least 10 feet away from the road edge. Disturbed soil shall be feathered into the woods and not left in berms or windrows.

#### 4.1.7 - Road Closure (10/11)

All new roads built into the sale must be blocked to vehicle traffic upon completion of the sale. Overgrown roads that are reopened shall be considered new roads. In general, this will require constructing a four (4') foot high berm of stumps and logs covered with earth. Stumps and brush must be placed along the remainder of the trail. These roads must be rendered impassable to cars and trucks. Contact the Sale Administrator for specific details of design and placement.

#### 4.1.11 - Permits (2/12)

The Purchaser will secure any necessary permits that may be required.

### 4.2 - Maintenance

#### 4.2.5 - Two Wheel Drive Condition (2/04)

All existing trail roads on and adjacent to the Sale Area must be passable by two-wheel drive traffic for the duration of the sale.

## 5 - Operations

### 5.1 - Notification

#### 5.1.1 - Pre-sale Conference (10/16)

A pre-sale conference on site between the Purchaser and Sale Administrator is required prior to beginning any operations to determine landing and road locations. The Unit Manager or his/her representative must be contacted at least 5 days in advance to schedule the conference.

#### 5.1.4 - Post-Sale Conference (10/16)

A post-sale conference on site between the Purchaser and sale administrator is required 5 days prior to the completion of active logging operations to determine clean-up and repair of landings, road edges, and the fulfillment of other contract specifications.

### 5.2 - Conduct of Operations

#### 5.2.1 - Slash

##### 5.2.1.8 - Slash Height (12/08)

No slash or tree tops may exceed 24 inches in height.

#### 5.2.2 - Hazard Trees/Snags

##### 5.2.2.1 - Den Trees (10/16)

Obvious hollow and/or den trees shall be protected and left standing unless they are a safety hazard.

#### 5.2.3 - Operating Restrictions

##### 5.2.3.4 - Oak Wilt Restriction, No Exceptions (1/18)

Within the Sale Area, cutting, skidding, hauling within the sale and brushing of access roads to the sale are not permitted during the period of April 15 to July 15. No exceptions will be granted. This is necessary to reduce the spread of oak wilt.

##### 5.2.32 - Decking/Landing Restoration (9/13)

All decking and landing areas must have the surface area restored to a condition equal to or better than before. This is to ensure the proper regeneration of the stand. Wood debris, chips and "cookies" from trimmings must be removed or scattered away from landing and loading areas and may not be windrowed on the edge.

##### 5.2.38 - No Decking Against Live Trees (2/04)

Cut products may not be decked against unmarked or designated leave trees.

##### 5.2.39 - ORV Trail/Route Protection (4/18)

ORV trails run through Payment Units 5, 6, 10 and 11 and they are shown on the Timber Sale Map. Trees with yellow ORV markers shall be cut off above the markers and at least five (5) feet above ground. All stumps within five (5) feet of the trail must be cut flush with the ground. Maintain a 20-foot-wide slash, debris, and rut free zone daily using the ORV trail or route as the centerline. Do not run equipment down the ORV trail or route. Skidding across the trail or route may only occur in locations approved by the Sale Administrator.

#### 5.4 - Soil Protection

##### 5.4.1 - Rutting Restriction, General (7/16)

Operations are to cease immediately if equipment and weather conditions result in rutting of roads and/or skid trails which are 12 inches or greater in depth and 50 feet in length. The Unit Manager or his/her representative may restrict hauling and/or skidding if ruts exceed the specified depth. With the Unit Manager or his/her representative's approval, the Purchaser may return to the area when the risk of rutting has decreased.

##### 5.4.4 - Slope Protection (9/19)

Skid trails and roads on slopes shall be water barred with slash and stumps as soon as use is complete to prevent erosion.

### 6 - Safety and Fire Prevention

#### 6.2 - Signing

##### 6.2.1 - Road Posting (10/20)

The Purchaser is responsible for posting and maintaining caution signs on all roads in and adjacent to the Sale Area prior to beginning operations. The road must be posted at appropriate distances from the Sale Area to warn of logging activity and truck traffic. Signs must be removed when harvest operations are suspended or completed. The Purchaser will provide these signs.

##### 6.2.3 - Recreational Trail Posting (10/20)

The Purchaser is responsible for posting and maintaining caution signs on the ORV trails prior to beginning operations. The trail must be posted at appropriate distances from the Sale Area to warn of logging activity and truck traffic at both ends of the trail. Signs must be removed when harvest operations are suspended or completed. The Purchaser will provide these signs.



**TIMBER SALE MAP**

This information provided by authority of Part 525, 1994 PA 451, as amended.

Sale Number  
**71-013-25**

Date  
**10/01/2025**

Forest Management Unit	County	Mapped By: Contractor, Sanborn, Ewald
Roscommon Mgt Unit	Ogemaw	Cruised By: Sanborn, Ewald, Martell

Scale	Page	Of
1:10,000	1	2

Township	Range	Section(s) and
22N / 23N	01E	Subdivision(s) Sec. 1 W1/2NW,NWSW; Sec. 2 E1/2NE,NESW,SE; Sec. 35 NE,NWSE,SESE;

**Cover Type**

A = Aspen	J = Jack Pine	O = Oak	U = Upland Brush
B = Paper Birch	K = Rock	P = Lowland Poplar	UM = Upland Mix Forest
C = Cedar	L = Lowland Brush	Q = Mixed Swamp Conifer	V = Bog or Marsh
D = Treed Bog	LM = Lowland Mix Forest	R = Red Pine	W = White Pine
E = Swamp Hardwoods	M = Maple, Beech, Birch	S = Black Spruce	X = Non Stocked
F = Spruce/Fir	MC = Mixed Conifer	T = Tamarack	Y = Sand
G = Grass	MD = Mixed Deciduous	Z = Water	
H = Hemlock	N = Marsh		

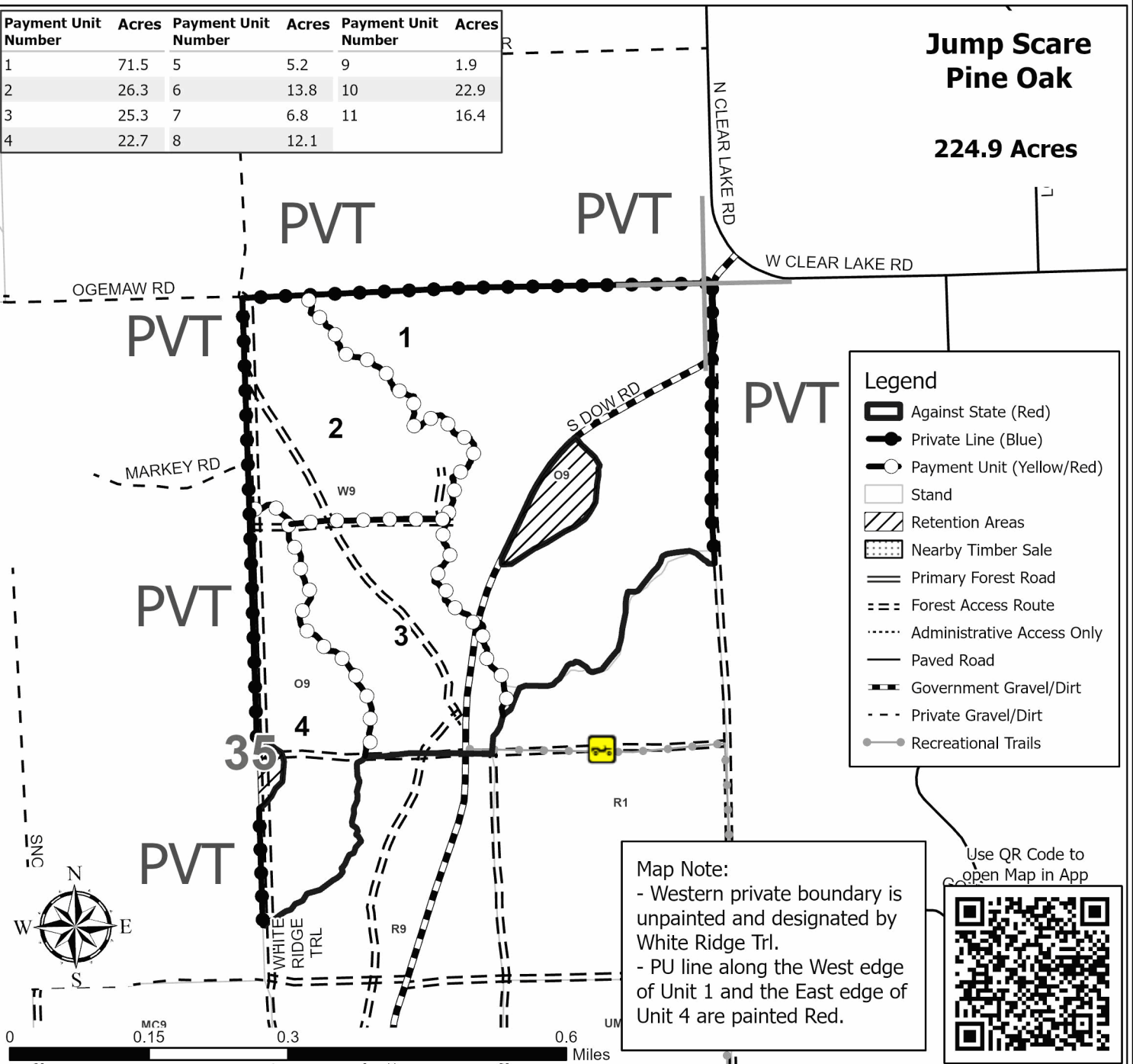
**Density**

0 = Non Stocked	5 = Pole Timber Medium
1 = Seedling Sapling Poor	6 = Pole Timber Well
2 = Seedling Sapling Medium	7 = Saw Timber Poor
3 = Seedling Sapling Well	8 = Saw Timber Medium
4 = Pole Timber Poor	9 = Saw Timber Well

Payment Unit Number	Acres	Payment Unit Number	Acres	Payment Unit Number	Acres
1	71.5	5	5.2	9	1.9
2	26.3	6	13.8	10	22.9
3	25.3	7	6.8	11	16.4
4	22.7	8	12.1		

**Jump Scare  
Pine Oak**

**224.9 Acres**



**TIMBER SALE MAP**

This information provided by authority of Part 525, 1994 PA 451, as amended.

Sale Number

**71-013-25**

Date

**10/01/2025**

Forest Management Unit

County

Mapped By: Contractor, Sanborn, Ewald

Scale

Page

Of

Roscommon Mgt Unit

Ogemaw

Cruised By: Sanborn, Ewald, Martell

**1:10,000****2****2**Township  
22N / 23NRange  
01ESection(s) and  
Subdivision(s)

Sec. 1 W1/2NW,NWSW; Sec. 2 E1/2NE,NESW,SE; Sec. 35 NE,NWSE,SESE;

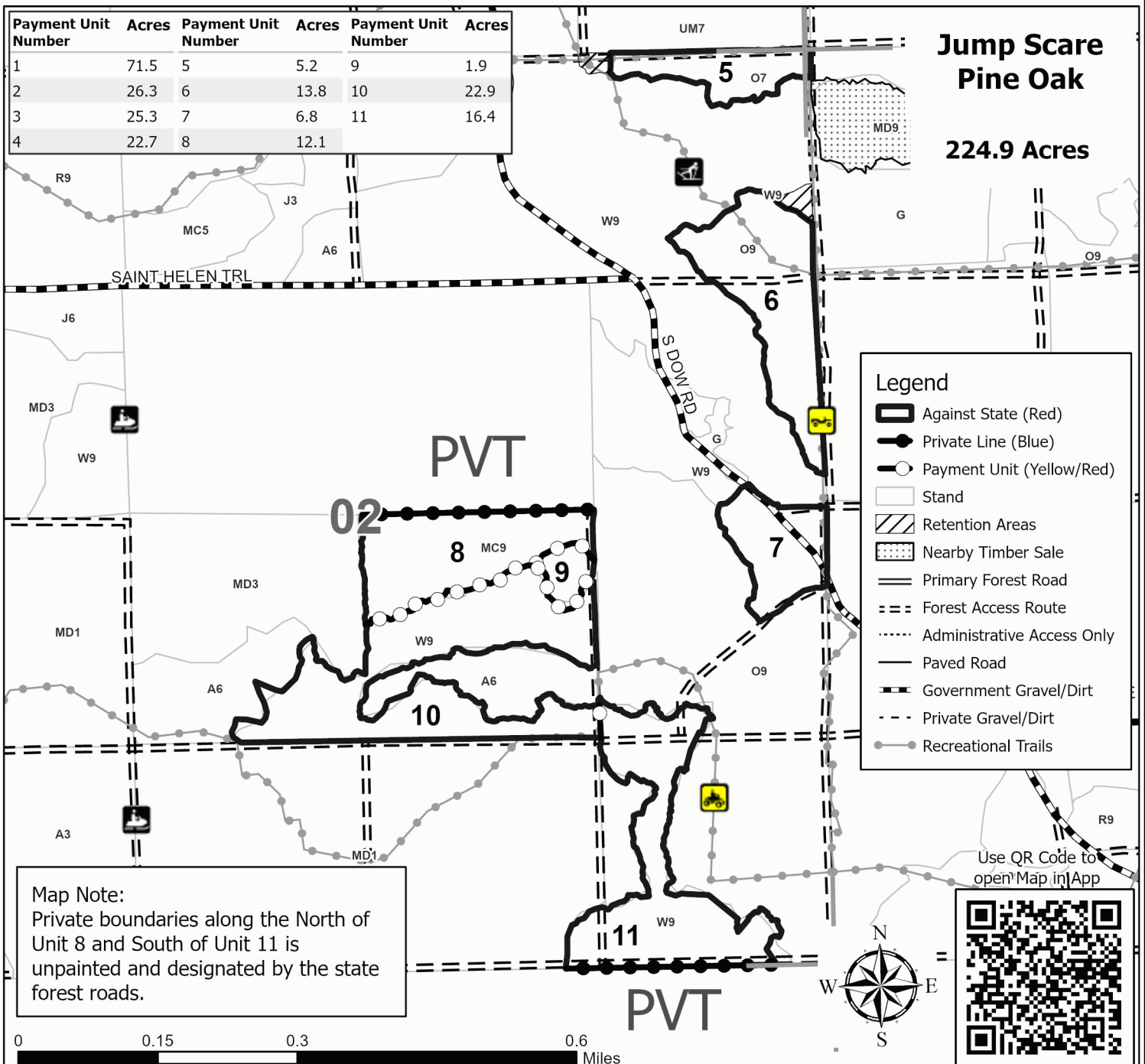
**Cover Type**

A = Aspen	J = Jack Pine	O = Oak	U = Upland Brush
B = Paper Birch	K = Rock	P = Lowland Poplar	UM = Upland Mix Forest
C = Cedar	L = Lowland Brush	Q = Mixed Swamp Conifer	V = Bog or Marsh
D = Treed Bog	LM = Lowland Mix Forest	R = Red Pine	W = White Pine
E = Swamp Hardwoods	M = Maple, Beech, Birch	S = Black Spruce	X = Non Stocked
F = Spruce/Fir	MC = Mixed Conifer	T = Tamarack	Y = Sand
G = Grass	MD = Mixed Deciduous		Z = Water
H = Hemlock	N = Marsh		

**Density**

0 = Non Stocked	5 = Pole Timber Medium
1 = Seedling Sapling Poor	6 = Pole Timber Well
2 = Seedling Sapling Medium	7 = Saw Timber Poor
3 = Seedling Sapling Well	8 = Saw Timber Medium
4 = Pole Timber Poor	9 = Saw Timber Well

Payment Unit Number	Acres	Payment Unit Number	Acres	Payment Unit Number	Acres
1	71.5	5	5.2	9	1.9
2	26.3	6	13.8	10	22.9
3	25.3	7	6.8	11	16.4
4	22.7	8	12.1		

**Jump Scare  
Pine Oak****224.9 Acres**

## TIMBER SALE INFORMATION

### C81 Mix (71-015-25)

T23N, R01E, SEC. 21; T23N, R01E, SEC. 26; T23N, R01E, SEC. 27; T23N, R01E, SEC. 28; T23N, R01E, SEC. 33; T23N, R01E, SEC. 34.

**SALE NOTE:** The sale consists of several overstory removal treatments and several clearcuts located to the east of St Helen, MI. See oak wilt restrictions.

A recreation site such as a trail, pathway, or campground is within the sale area or the vicinity. Certain restrictions/specifications may be applicable including time restrictions.

A timber sale contract for this lump sum, sealed bid timber sale will be awarded to the responsible bidder offering the highest sealed bid price. All units of volume listed below were estimated using the Inventory Manager computer program and the new Michigan taper model. Bids must be at or above the following advertised price for each product and species:

<u>PRODUCTS &amp; SPECIES</u>	<u>ESTIMATED UNITS*</u>		<u>ADVERTISED PRICE</u>
Sawtimber			
Black/Red (Hybrid) Oak	120.6	MBF	\$ 128.00 / MBF
Jack Pine	10.8	MBF	\$ 30.00 / MBF
Mixed Aspen	226.1	MBF	\$ 80.00 / MBF
Red Maple	42.0	MBF	\$ 70.00 / MBF
Red Oak	211.0	MBF	\$ 135.00 / MBF
White Oak	70.3	MBF	\$ 77.00 / MBF
White Pine	112.5	MBF	\$ 66.00 / MBF
Pulpwood			
Jack Pine	777	Cords	\$ 11.70 / Cord
Mixed Aspen	1,699	Cords	\$ 33.35 / Cord
Mixed Hardwood	882	Cords	\$ 21.70 / Cord
Mixed Oak	1,149	Cords	\$ 18.75 / Cord
Red Pine	794	Cords	\$ 42.50 / Cord
White Pine	203	Cords	\$ 34.15 / Cord

\* The total volume is statistically estimated within plus (+) or minus (-) 9.19 percent. There are an estimated 7,466 cords on this timber sale, plus or minus 687 cords at the 95% confidence level. The estimated units are final and not subject to adjustment. Prospective bidders are urged to examine this timber and to make their own estimates of quantity and quality.

### **BOND AND PAYMENT SCHEDULE:**

- A bond in the amount of \$22,523.00 to insure faithful performance of the conditions of the contract will be deposited by the successful bidder within 21 days of the sale award.
- Cutting in any sale or unit without the required advance payment would be considered a trespass.
- Total payment must be paid in advance or according to the following schedule :
  - Ten percent (10%) of the sale value must be paid within 21 days of the sale award.
  - The 10% down payment will be credited towards the first unit cut.
  - Payment for each of the following units must be made before cutting begins in that unit:

<u>PAYMENT UNIT NUMBER</u>	<u>PERCENT OF TOTAL SALE VALUE</u>
01	0.7%
02	27.7%
03	5.0%
04	10.4%
05	10.3%
06	2.6%
07	10.3%
08	7.0%
09	8.0%
10	10.5%
11	7.5%

- If no cutting takes place, the 10% down payment will not be refunded.
- Operations on the contract issued will terminate on 06/30/2029.

### **SALE STATISTICS**

Volumes were calculated in cubic feet using the Michigan taper model. Cubic foot volume includes all wood inside bark for the product indicated. For display purposes, cubic feet were converted to cords and MBF using a simple conversion factor, e.g. 79 cubic feet per cord and 185 cubic feet per MBF. The cubic foot volumes are precise; the cords and MBF volumes are not. Cubic foot volume cannot be directly converted to cords or boards with precision.

**SALE VOLUMES**

The total estimated sale volume may not equal the sum of the species/products due to the nature of statistical calculations associated with double sampling methodology.

VOLUME			STATISTICAL RANGE IN CORDS	
TOTAL CUBIC FEET	TOTAL CORDS	PERCENT ERROR	MINIMUM	MAXIMUM
589,843	7,466	9.19%	6,780	8,153

**VDU VOLUMES**

A VDU is a Volume Determination Unit. Volumes and their associated statistics are calculated at the VDU level and summarized to the sale level. There is often a one to one relationship between a VDU and a Payment Unit, but not always, depending on the cruise design. Refer to the VDU TO PAYMENT UNIT table.

	VOLUME			RANGE IN CORDS	
VDU	TOTAL CUBIC FEET	TOTAL CORDS	PERCENT ERROR	MINIMUM	MAXIMUM
3	65,093	824	28.93%	586	1,062
5	64,612	818	17.56%	674	962
6	162,805	2,061	22.90%	1,589	2,533
7	6,202	79	48.11%	41	116
8	59,358	751	30.80%	520	983
16	16,233	205	49.86%	103	308
20	49,689	629	21.20%	496	762
22	35,530	450	38.56%	276	623
28	44,770	567	33.89%	375	759
34	36,338	460	31.95%	313	607
40	49,213	623	23.08%	479	767
TOTAL:	589,843	7,466		5,451	9,482

**VDU TO PAYMENT UNIT**

When a VDU is associated with more than one Payment Unit (PU), the VDU volumes are assigned to the PU based on acres of the VDU within the PU.

VDU	VDU ACRES	PU	PU ACRES
TOTAL:			

**DESCRIPTION OF TIMBER BY PAYMENT UNIT (PU)**

PU	MARKET GROUP	PRODUCT	QUANTITY	UNIT	ACRES	ADVERTISE PRICE
1	Jack Pine	Sawtimber	1.6	MBF	15.8	\$1,658.05
	Mixed Aspen		2.0	MBF		
	<i>B. T. Aspen</i>		2.0	<i>MBF</i>		
	Red Maple		0.8	MBF		
	White Oak		1.7	MBF		
	White Pine	Pulpwood	1.6	MBF		
	Jack Pine		26	Cords		
	Mixed Aspen		4	Cords		
	<i>B. T. Aspen</i>		2	<i>Cords</i>		
	<i>Quaking Aspen</i>		2	<i>Cords</i>		
	Mixed Hardwood		24	Cords		
	<i>Pin Cherry</i>		16	<i>Cords</i>		
	<i>Red Maple</i>		8	<i>Cords</i>		
	Mixed Oak		2	Cords		
	<i>White Oak</i>		2	<i>Cords</i>		
	Red Pine		3	Cords		
	<i>Red Pine</i>	<i>Sawtimber</i>	0.6	<i>MBF</i>		
	<i>Red Pine</i>	<i>Pulpwood</i>	2	<i>Cords</i>		
	White Pine		1	Cords		
2	Black/Red (Hybrid)	Sawtimber	23.7	MBF	70.2	\$62,342.70
	Mixed Aspen		132.4	MBF		
	<i>B. T. Aspen</i>		132.4	<i>MBF</i>		
	Red Maple		9.0	MBF		
	Red Oak		20.1	MBF		
	White Oak	Pulpwood	1.7	MBF		
	White Pine		1.8	MBF		
	Jack Pine		6	Cords		
	Mixed Aspen		938	Cords		
	<i>B. T. Aspen</i>		661	<i>Cords</i>		
	<i>Quaking Aspen</i>		277	<i>Cords</i>		
	Mixed Hardwood		356	Cords		
	<i>Pin Cherry</i>		18	<i>Cords</i>		
	<i>Red Maple</i>		338	<i>Cords</i>		
	Mixed Oak		317	Cords		
	<i>/Red (Hybrid) Oak</i>		190	<i>Cords</i>		
	<i>Red Oak</i>		97	<i>Cords</i>		
	<i>White Oak</i>		30	<i>Cords</i>		
	White Pine		3	Cords		
3	Black/Red (Hybrid)	Sawtimber	0.8	MBF	78.9	\$11,183.95
	Mixed Aspen		3.8	MBF		
	<i>Quaking Aspen</i>		3.8	<i>MBF</i>		
	White Pine		3.6	MBF		
	Jack Pine	Pulpwood	714	Cords		
	Mixed Aspen		4	Cords		
	<i>Quaking Aspen</i>		4	<i>Cords</i>		
	Mixed Hardwood		8	Cords		
	<i>Pin Cherry</i>		8	<i>Cords</i>		
	Mixed Oak		44	Cords		
	<i>/Red (Hybrid) Oak</i>		40	<i>Cords</i>		
	<i>White Oak</i>		4	<i>Cords</i>		
	Red Pine		24	Cords		
	<i>Red Pine</i>	<i>Sawtimber</i>	9.2	<i>MBF</i>		
	<i>Red Pine</i>	<i>Pulpwood</i>	6	<i>Cords</i>		
	White Pine		1	Cords		
4	Black/Red (Hybrid)	Sawtimber	4.2	MBF	34.3	\$23,401.15
	Jack Pine		0.9	MBF		

## DESCRIPTION OF TIMBER BY PAYMENT UNIT (PU), CON'T

PU	MARKET GROUP	PRODUCT	QUANTITY	UNIT	ACRES	ADVERTISE PRICE
4 con't	Mixed Aspen	Sawtimber	45.5	MBF		
	<i>B. T. Aspen</i>		41.6	<i>MBF</i>		
	<i>Quaking Aspen</i>		3.9	<i>MBF</i>		
	Red Maple		6.7	MBF		
	Red Oak		18.2	MBF		
	White Pine		8.4	MBF		
	Jack Pine		2	Cords		
	Mixed Aspen		185	Cords		
	<i>B. T. Aspen</i>		142	<i>Cords</i>		
	<i>Quaking Aspen</i>		43	<i>Cords</i>		
	Mixed Hardwood		208	Cords		
	<i>Pin Cherry</i>		16	<i>Cords</i>		
	<i>Red Maple</i>		192	<i>Cords</i>		
	Mixed Oak		195	Cords		
	<i>/Red (Hybrid) Oak</i>		68	<i>Cords</i>		
	<i>Red Oak</i>		123	<i>Cords</i>		
	<i>White Oak</i>		4	<i>Cords</i>		
	Red Pine	Sawtimber Pulpwood	23	Cords		
	<i>Red Pine</i>		10.2	<i>MBF</i>		
	<i>Red Pine</i>		3	<i>Cords</i>		
	White Pine		11	Cords		
5	Mixed Aspen	Sawtimber	31.5	MBF	19.1	\$23,148.85
	<i>B. T. Aspen</i>		31.5	<i>MBF</i>		
	Red Maple		1.7	MBF		
	Red Oak		6.5	MBF		
	Jack Pine		2	Cords		
	Mixed Aspen		466	Cords		
	<i>B. T. Aspen</i>		466	<i>Cords</i>		
	Mixed Hardwood		123	Cords		
	<i>Red Maple</i>		123	<i>Cords</i>		
	Mixed Oak		61	Cords		
	<i>/Red (Hybrid) Oak</i>		32	<i>Cords</i>		
	<i>Red Oak</i>		22	<i>Cords</i>		
	<i>White Oak</i>		7	<i>Cords</i>		
	Red Pine		6	Cords		
	<i>Red Pine</i>		2.2	<i>MBF</i>		
	<i>Red Pine</i>		2	<i>Cords</i>		
6	Red Maple	Sawtimber	11.5	MBF	6.6	\$5,953.10
	Red Oak		2.2	MBF		
	White Pine		19.3	MBF		
	Mixed Aspen		41	Cords		
	<i>B. T. Aspen</i>		41	<i>Cords</i>		
	Mixed Hardwood		40	Cords		
	<i>Pin Cherry</i>		4	<i>Cords</i>		
	<i>Red Maple</i>		36	<i>Cords</i>		
	Mixed Oak		23	Cords		
	<i>/Red (Hybrid) Oak</i>		11	<i>Cords</i>		
	<i>Red Oak</i>		2	<i>Cords</i>		
	<i>White Oak</i>		10	<i>Cords</i>		
	Red Pine		15	Cords		
	<i>Red Pine</i>		7.1	<i>MBF</i>		
	<i>Red Pine</i>		1	<i>Cords</i>		
	White Pine		8	Cords		
7	Black/Red (Hybrid)	Sawtimber	29.1	MBF	27.3	\$23,204.60
	Red Oak		66.2	MBF		
	White Oak		36.6	MBF		

## DESCRIPTION OF TIMBER BY PAYMENT UNIT (PU), CON'T

PU	MARKET GROUP	PRODUCT	QUANTITY	UNIT	ACRES	ADVERTISE PRICE
7 con't	White Pine	Sawtimber	13.5	MBF		
	Mixed Aspen	Pulpwood	15	Cords		
	<i>B. T. Aspen</i>		15	<i>Cords</i>		
	Mixed Hardwood		17	Cords		
	<i>Red Maple</i>		17	<i>Cords</i>		
	Mixed Oak		197	Cords		
	<i>/Red (Hybrid) Oak</i>		52	<i>Cords</i>		
	<i>Red Oak</i>		72	<i>Cords</i>		
	<i>White Oak</i>		73	<i>Cords</i>		
	Red Pine		47	Cords		
	<i>Red Pine</i>	<i>Sawtimber</i>	16.0	<i>MBF</i>		
	<i>Red Pine</i>	<i>Pulpwood</i>	15	<i>Cords</i>		
	White Pine		8	Cords		
8	Black/Red (Hybrid)	Sawtimber	16.7	MBF	11.0	\$15,798.90
	Jack Pine		4.7	MBF		
	Mixed Aspen		1.0	MBF		
	<i>B. T. Aspen</i>		1.0	<i>MBF</i>		
	Red Maple		3.5	MBF		
	Red Oak		8.9	MBF		
	White Pine		26.7	MBF		
	Jack Pine	Pulpwood	13	Cords		
	Mixed Aspen		5	Cords		
	<i>B. T. Aspen</i>		5	<i>Cords</i>		
	Mixed Hardwood		12	Cords		
	<i>Pin Cherry</i>		2	<i>Cords</i>		
	<i>Red Maple</i>		10	<i>Cords</i>		
	Mixed Oak		29	Cords		
	<i>/Red (Hybrid) Oak</i>		26	<i>Cords</i>		
	<i>Red Oak</i>		3	<i>Cords</i>		
	Red Pine		187	Cords		
	<i>Red Pine</i>	<i>Sawtimber</i>	76.0	<i>MBF</i>		
	<i>Red Pine</i>	<i>Pulpwood</i>	35	<i>Cords</i>		
	White Pine		34	Cords		
9	Black/Red (Hybrid)	Sawtimber	12.3	MBF	15.2	\$17,987.65
	Jack Pine		3.6	MBF		
	Red Maple		5.7	MBF		
	Red Oak		3.8	MBF		
	White Oak		0.9	MBF		
	White Pine		34.9	MBF		
	Jack Pine	Pulpwood	14	Cords		
	Mixed Aspen		27	Cords		
	<i>B. T. Aspen</i>		27	<i>Cords</i>		
	Mixed Hardwood		79	Cords		
	<i>Red Maple</i>		79	<i>Cords</i>		
	Mixed Oak		42	Cords		
	<i>/Red (Hybrid) Oak</i>		34	<i>Cords</i>		
	<i>Red Oak</i>		4	<i>Cords</i>		
	<i>White Oak</i>		4	<i>Cords</i>		
	Red Pine		118	Cords		
	<i>Red Pine</i>	<i>Sawtimber</i>	37.5	<i>MBF</i>		
	<i>Red Pine</i>	<i>Pulpwood</i>	43	<i>Cords</i>		
	White Pine		130	Cords		
10	Black/Red (Hybrid)	Sawtimber	33.8	MBF	27.4	\$23,644.45
	Mixed Aspen		4.5	MBF		
	<i>B. T. Aspen</i>		4.5	<i>MBF</i>		
	Red Maple		3.1	MBF		

**DESCRIPTION OF TIMBER BY PAYMENT UNIT (PU), CON'T**

PU	MARKET GROUP	PRODUCT	QUANTITY	UNIT	ACRES	ADVERTISE PRICE
10 con't	Red Oak	Sawtimber	85.1	MBF		
	White Oak		29.4	MBF		
	Mixed Aspen	Pulpwood	1	Cords		
	B. T. Aspen		1	Cords		
	Mixed Hardwood		15	Cords		
	Pin Cherry		2	Cords		
	Red Maple		13	Cords		
	Mixed Oak		236	Cords		
	/Red (Hybrid) Oak		55	Cords		
	Red Oak		111	Cords		
White Oak		70	Cords			
White Pine		6	Cords			
11	Mixed Aspen	Sawtimber	5.4	MBF	5.0	\$16,901.65
	B. T. Aspen		5.4	MBF		
	White Pine		2.7	MBF		
	Mixed Aspen	Pulpwood	13	Cords		
	B. T. Aspen		13	Cords		
	Mixed Oak		3	Cords		
	White Oak		3	Cords		
	Red Pine		371	Cords		
	Red Pine	Sawtimber	153.1	MBF		
	Red Pine	Pulpwood	65	Cords		
White Pine		1	Cords			
TOTAL:			793.3	MBF		
TOTAL:			5,504	Cords		

## **Sale Specific Conditions & Requirements**

**Sale Name: C81 Mix**

**Sale Number: 71-015-25 Seq#: 1**

### **1 - Sale Area**

#### **1.2 - Boundaries**

##### **1.2.1 - Painted Boundaries (9/19)**

The sale boundary and Payment Unit boundaries are marked and identified by blue, red and yellow paint. Exterior sale boundary lines against private property are marked with blue paint. Exterior sale boundary lines against state are marked with red paint. Interior Payment Unit boundaries are marked with yellow paint. Retention patches are marked with red paint; no harvesting activities may occur within these areas. The painted boundary line trees are not Included Timber and are to be protected. Yellow painted trees designating an interior Payment Unit boundary are only to be cut when all surrounding Payment Units have been paid.

### **2 - Timber Specifications**

#### **2.1 - Included Timber**

##### **2.1.1 - Clearcut Unit(s) with Unmerchantable Trees (6/14)**

Within Payment Unit(s) 1, 2, 3, 4, & 5, cut all trees that are two (2) inches or more at DBH.

##### **2.1.5 - Overstory Removal Unit(s) (8/11)**

Within Payment Unit(s) 6-11, all trees with DBH equal to or greater than 6 inches which meet minimum piece specifications in

2.2 Utilization, are designated for cutting, except trees that are 26 inches at DBH and larger.

#### **2.2 - Utilization**

##### **2.2.3 - Stump Heights (12/24)**

Stump heights within the Sale Area shall not exceed 12 inches for trees greater than 10 inches at DBH and four (4) inches for trees smaller than 10 inches at DBH. A written waiver of this requirement may be obtained if wet summer weather makes winter logging necessary.

### **3 - Payments**

#### **3.3 - Pre-measured Sales**

##### **3.3.4 - Dividing Payment Units (7/14)**

Payment Unit(s) may be divided at the request of the Purchaser and upon approval of the Unit Manager. Dividing Payment Units is a contract modification which requires a Timber Sale Contract Amendment. There will be only one division per Payment Unit.

#### **3.4 - Damaged Timber**

##### **3.4.1 - Damaged Timber (12/24)**

General Condition and Requirement 3.4 Damaged Timber, defines liquidated damages for undesignated live merchantable trees which are cut or injured. In addition, extreme care should be taken to avoid damage to tree seedlings and saplings.

Within the Sale Area, if more than 30% of the tree seedlings or saplings (1/4" to 4.5" DBH) within a specified portion of the Sale Area are damaged, liquidated damages will be assessed at \$500 per acre for all acreage within that specified portion of the Sale Area that was damaged.

No damage is acceptable to undesignated live merchantable trees. Within the Sale Area, if more than 5% of trees (> 4.5" DBH) within a specified area of the sale are damaged, liquidated damages will be assessed for all trees damaged. Rates will be in accordance with General Condition and Requirement 3.4 Damaged Timber.

### **4 - Transportation**

#### **4.1 - Construction**

#### 4.1.6 - Road Construction (4/24)

Construction of new roads or improvements of existing roads shall be done in such a way as to minimize the environmental and visual impacts. Merchantable trees shall be cut and utilized unless otherwise directed. Non-merchantable trees shall be severed and laid flat on the ground. Slash shall be scattered, not left in windrows, and kept a minimum of 10 feet back from the road edge. Stumps shall be set upright, not left on edge, and be moved at least 10 feet away from the road edge. Disturbed soil shall be feathered into the woods and not left in berms or windrows.

#### 4.1.7 - Road Closure (10/11)

All new roads built into the sale must be blocked to vehicle traffic upon completion of the sale. Overgrown roads that are reopened shall be considered new roads. In general, this will require constructing a four (4') foot high berm of stumps and logs covered with earth. Stumps and brush must be placed along the remainder of the trail. These roads must be rendered impassable to cars and trucks. All stumps from road building and landing construction must be reserved to block any newly constructed roads upon completion of the sale. These stumps must be scattered along the road system to prohibit vehicular movement. Contact the Sale Administrator for specific details of design and placement.

### 4.2 - Maintenance

#### 4.2.5 - Two Wheel Drive Condition (2/04)

All existing trail roads on and adjacent to the Sale Area must be passable by two-wheel drive traffic for the duration of the sale.

## 5 - Operations

### 5.1 - Notification

#### 5.1.1 - Pre-sale Conference (10/25)

A pre-sale conference on site between the Purchaser and Sale Administrator is required prior to beginning any operations a Payment Unit to determine landing and road locations. The Unit Manager or his/her representative must be contacted at least 5 days in advance to schedule the conference.

#### 5.1.4 - Post-Sale Conference (10/16)

A post-sale conference on site between the Purchaser and sale administrator is required 5 days prior to the completion of active logging operations to determine clean-up and repair of landings, road edges, and the fulfillment of other contract specifications.

### 5.2 - Conduct of Operations

#### 5.2.1 - Slash

##### 5.2.1.8 - Slash Height (12/08)

No slash or tree tops may exceed 24 inches in height.

#### 5.2.3 - Operating Restrictions

##### 5.2.3.4 - Oak Wilt Restriction, No Exceptions (1/18)

Within Payment Unit(s) 6, 7, 8, 9, 10, & 11, cutting, skidding, hauling within the sale and brushing of access roads to the sale are not permitted during the period of April 15 to July 15. No exceptions will be granted. This is necessary to reduce the spread of oak wilt.

##### 5.2.3.5 - Oak Wilt Restriction (1/18)

Within Payment Unit(s) 1, 2, 3, 4, & 5, unless changed by written agreement, cutting, skidding, hauling within the sale and brushing of access roads to the sale are not permitted during the period of April 15 to July 15. Operations may be allowed if specific steps are taken to prevent damaging uncut oak during the high-risk period. Those steps may include completing all road brushing before April 15 and clearing a tree-length buffer along uncut oak cover before April 15. This is necessary to reduce the spread of oak wilt. For more information, contact the Unit Manager or his/her representative.

##### 5.2.3.11 - Coppice Regeneration Protection (4/10)

Timber harvesting in Payment Units 1-5 must be completed before significant aspen sprouting occurs in that Payment Unit, so as to minimize damage to the new regeneration. Any post-harvest operations, such as chipping, must be completed before sprouting of regeneration occurs. If it is anticipated that chipping will be delayed, then tops shall be carried to one central location or left unchipped. The Unit Manager or his/her representative may cease such operations

if sprouting occurs before the operation is complete.

#### 5.2.4 - Dead and Down Creation

##### 5.2.4.2 - Dead and Down Creation, Hare and Grouse (1/25)

To improve habitat for snowshoe hare, grouse, and other species, the Purchaser is to leave two (2) 10-inch diameter or larger log size pieces on the ground for every two (2) acres within Payment Units 2, 3, and 5. They should be scattered throughout the sale or positioned per the Sale Administrator's instructions. The logs should be placed so they overlap. These pieces should have a minimum length of ten (10) feet. They can be of any tree species and can be an un-merchantable piece of wood or a full tree.

##### 5.2.4.3 - Dead and Down Creation, Dead Trees (6/07)

Except as provided for in General Condition and Requirement 5.2.2, no dead trees, standing or down, are to be cut, skidded, or processed.

#### 5.2.32 - Decking/Landing Restoration (9/13)

All decking and landing areas must have the surface area restored to a condition equal to or better than before. This is to ensure the proper regeneration of the stand. Wood debris, chips and "cookies" from trimmings must be removed or scattered away from landing and loading areas and may not be windrowed on the edge.

#### 5.2.38 - No Decking Against Live Trees (2/04)

Cut products may not be decked against unmarked or designated leave trees.

#### 5.2.41 - Snowmobile Trail Protection (9/11)

A snowmobile trail is shown on the Timber Sale Map. Do not cut or damage posts with orange trail markers or traffic control signs. Trees with signs may be cut above the sign. If the trail is used, it must be maintained and restored to a condition equal to or better than before the sale. The road maintenance/restoration must be done prior to December 1. If the trail is used for hauling, it must be graded to the satisfaction of the Unit Manager or his/her representative prior to December 1. If the trail road is to be used for hauling during the snowmobile season, then a snow-covered base must be left on the trail. The snowmobile trail may only be crossed at right angles. Maintain a 20-foot-wide slash, debris, and rut free zone daily using the snowmobile trail as the centerline. No decking of forest products will be permitted along the snowmobile trail. All stumps within 20 feet of the snowmobile trail must be cut at ground level.

#### 5.4 - Soil Protection

##### 5.4.1 - Rutting Restriction, General (7/16)

Operations are to cease immediately if equipment and weather conditions result in rutting of roads and/or skid trails which are 12 inches or greater in depth and 50 feet in length. The Unit Manager or his/her representative may restrict hauling and/or skidding if ruts exceed the specified depth. With the Unit Manager or his/her representative's approval, the Purchaser may return to the area when the risk of rutting has decreased.

### 6 - Safety and Fire Prevention

#### 6.2 - Signing

##### 6.2.1 - Road Posting (10/20)

The Purchaser is responsible for posting and maintaining caution signs on Beaver Lake Trl, Sage Rd, Ogemaw Rd, and St Helen Trl prior to beginning operations. The road must be posted at appropriate distances from the Sale Area to warn of logging activity and truck traffic. Signs must be removed when harvest operations are suspended or completed. The Purchaser will provide these signs.

##### 6.2.2 - Snowmobile Trail Posting (10/20)

The Purchaser is responsible for posting and maintaining caution signs on the snowmobile trail shown on the timber sale map prior to beginning operations during the snowmobile season (approximately December 1 to March 31). The trail must be posted at appropriate distances from the Sale Area to warn of logging activity and truck traffic. Signs must be removed when harvest operations are suspended or completed. The Purchaser will provide these signs.



**TIMBER SALE MAP**

This information provided by authority of Part 525, 1994 PA 451, as amended.

Sale Number  
**71-015-25**

Date  
**10/07/2025**

Forest Management Unit	County	Mapped By: Sanborn	Scale	Page	Of
Roscommon Mgt Unit	Ogemaw	Cruised By: Sanborn	1:19,920	1	1

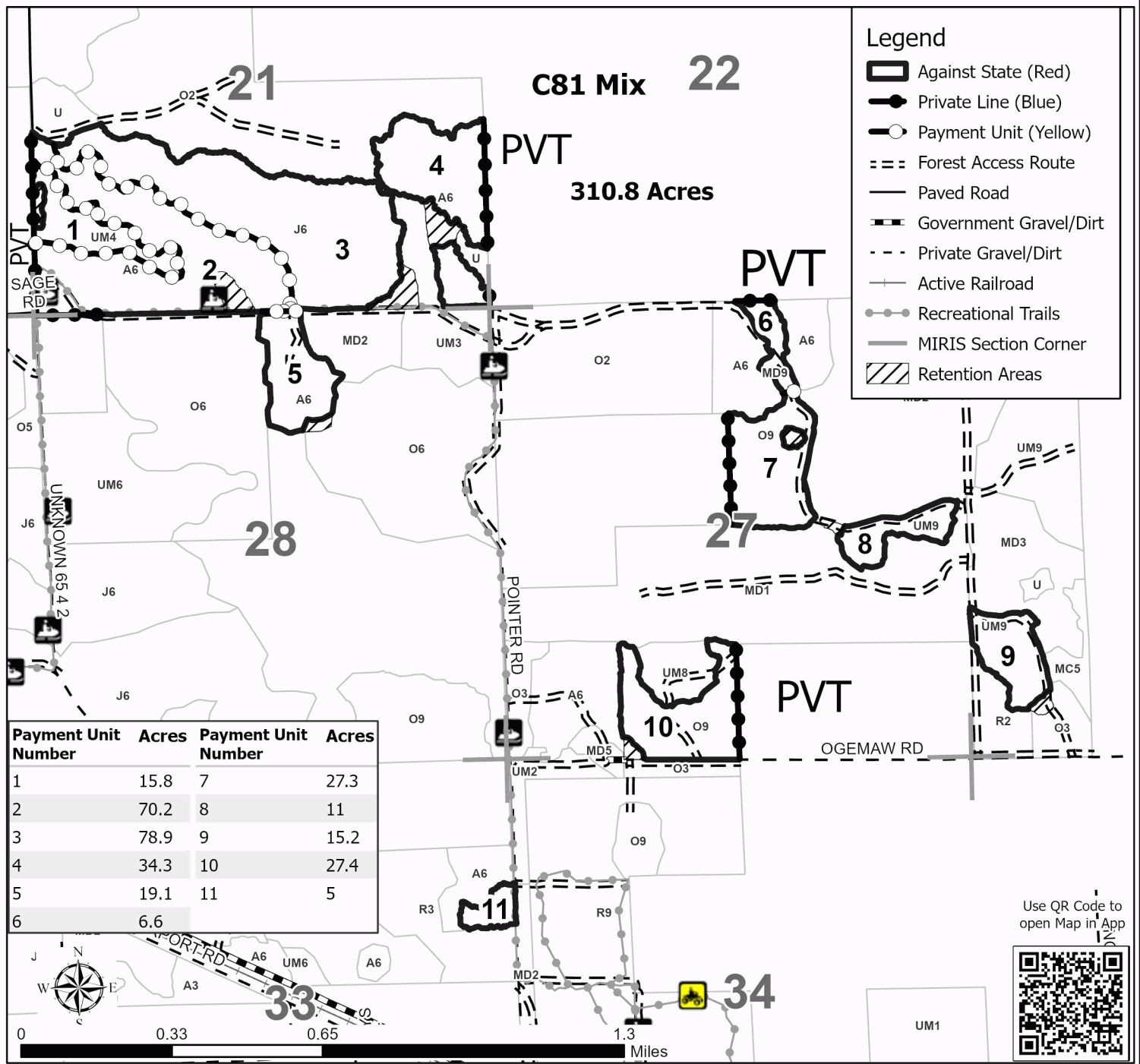
Township	Range	Section(s) and Subdivision(s)
23N	01E	NENW,W1/2NE; Sec. 33 SENE; Sec. 34 NENW,SWNW; Sec. 21 SW,SE; Sec. 26 W1/2SW; Sec. 27 NWNE,S1/2NE,NESW,S1/2SW,N1/2SE; Sec. 28

**Cover Type**

A = Aspen	J = Jack Pine	O = Oak	U = Upland Brush
B = Paper Birch	K = Rock	P = Lowland Poplar	UM = Upland Mix Forest
C = Cedar	L = Lowland Brush	Q = Mixed Swamp Conifer	V = Bog or Marsh
D = Treed Bog	LM = Lowland Mix Forest	R = Red Pine	W = White Pine
E = Swamp Hardwoods	M = Maple, Beech, Birch	S = Black Spruce	X = Non Stocked
F = Spruce/Fir	MC = Mixed Conifer	T = Tamarack	Y = Sand
G = Grass	MD = Mixed Deciduous		Z = Water
H = Hemlock	N = Marsh		

**Density**

0 = Non Stocked	5 = Pole Timber Medium
1 = Seedling Sapling Poor	6 = Pole Timber Well
2 = Seedling Sapling Medium	7 = Saw Timber Poor
3 = Seedling Sapling Well	8 = Saw Timber Medium
4 = Pole Timber Poor	9 = Saw Timber Well



Jump Scare Pine Oak (71-013-25)

T22N, R01E, SEC. 1; T22N, R01E, SEC. 2; T23N, R01E, SEC. 35; Ogemaw

In response to the notice of sale to be held 9:00 a.m. (local time) on March 4, 2026, I am hereby submitting my sealed bid ( firm offer) for the following forest products to be cut. Bids for individual species must be at or above the advertised price. All non-responsive bid forms may be rejected.

<u>PRODUCTS &amp; SPECIES</u>	<u>ESTIMATED VOLUME*</u>	<u>ADVERTISED PRICE</u>	<u>BID PRICE/UNIT</u>
<b>Sawtimber</b>			
Black Cherry	63.0 MBF	\$ 149.00/MBF	\$ _____
Mixed Aspen	24.0 MBF	\$ 80.00/MBF	\$ _____
Mixed Oak	1,068.0 MBF	\$ 128.00/MBF	\$ _____
Red Maple	36.7 MBF	\$ 70.00/MBF	\$ _____
Red Pine	40.6 MBF	\$ 104.00/MBF	\$ _____
White Pine	374.1 MBF	\$ 80.00/MBF	\$ _____
<b>Pulpwood</b>			
Mixed Aspen	370 Cords	\$ 33.35/Cord	\$ _____
Mixed Hardwood	593 Cords	\$ 21.70/Cord	\$ _____
Mixed Oak	1,020 Cords	\$ 18.75/Cord	\$ _____
Red Pine	257 Cords	\$ 42.50/Cord	\$ _____
White Pine	745 Cords	\$ 34.15/Cord	\$ _____

\*The volumes are statistically estimated within plus (+) or minus (-) 9.66 percent at 95% confidence level. These estimated volumes are final and not subject to adjustment. Prospective bidders are urged to examine this timber and to make their own estimates of quantity and quality.

I understand that any or all bids may be rejected. All bids must be signed and all bid items must be bid or the bid form may be rejected. I also understand that consideration and awarding a contract will be based upon my past performance and ability to complete the contract based upon equipment and staffing subject to my control .

FEDERAL ID: \_\_\_\_\_ or SOCIAL SECURITY NUMBER: \_\_\_\_\_

Company or individual bidding: \_\_\_\_\_

Company representative's name: \_\_\_\_\_

Address: \_\_\_\_\_

City: \_\_\_\_\_ State: \_\_\_\_\_ Zip: \_\_\_\_\_

IF AVAILABLE, PLEASE PLACE THE PERSONALIZED LABEL FROM YOUR PROSPECTUS IN THE ABOVE BOX.

Individual or company representative's signature: \_\_\_\_\_ Date: \_\_\_\_\_

Phone number : \_\_\_\_\_ Email (optional): \_\_\_\_\_

**THE WINNING BIDDER MUST COMPLETE THE VERIFICATION OF WORKER'S DISABILITY COMPENSATION ACT COMPLIANCE (ON REVERSE SIDE IF DOUBLE SIDED) WITHIN 21 DAYS OF SALE AWARD DATE**



## TIMBER SALE VERIFICATION OF WORKER'S DISABILITY COMPENSATION ACT COMPLIANCE

As required by Act 317, P.A. 1969 (Worker's Compensation) and  
Part 5 of Act 451 of 1994, as amended.

### FOR DEPARTMENT USE ONLY

Sale Number (XX - XXX - XX - XX)

Forest Management Unit:

### VERIFICATION OF WORKER'S DISABILITY COMPENSATION ACT COMPLIANCE

- This verification must be completed and submitted within 21 days of contract award and prior to the issuance of the timber sale contract.
- In addition, if boxes 2B or 2C are checked, then Notice of Exclusion or Certificate of Insurance must be submitted within twenty-one (21) days of the contract award and prior to the issuance of the timber sale contract.
- All Information must be typed or printed except for written signatures.

Please Check Appropriate Categories:

1. My business is organized as (you **must** check one of the boxes below):
  - A. ☐ Sole Proprietorship (individual)
  - B. ☐ Partnership
  - C. ☐ Corporation
2. You **must** check one of the boxes below:
  - A. ☐ I certify my business is a sole proprietorship and it has no employees but the sole proprietor. I am not subject to the Worker's Compensation Laws.
  - B. ☐ I certify my business has satisfied its obligation to the Worker's Compensation Act through the use of an approved Notice of Exclusion (BWC-337, Rev. 5/96). I will provide a copy of the Notice of Exclusion within 21 days of the contract award. (For questions or a copy of the BWC-337, please call the Worker's Compensation Bureau at 517-322-1195).
  - C. ☐ I certify my business has a Worker's Compensation Policy. I will provide an original Certificate of Insurance within twenty-one (21) days of the contract award.
3. If you have checked item 2(A) or 2(B), you **must** indicate the number of **both** full-time and part-time employees, other than yourself, including family members and active partners (if none, you must enter "0").

\_\_\_\_\_ Full-time Employees

\_\_\_\_\_ Part-time Employees

Name of Business		Federal ID (or) Social Security No.
Address		Telephone (       )
City	State	ZIP

*I hereby certify that the above information is true and correct. I agree to notify the Michigan DNR of any changes that occur in factors affecting my coverage during any of my present and future operations.*

\_\_\_\_\_  
Signature of Owner or Authorized Representative

\_\_\_\_\_  
Title

\_\_\_\_\_  
Date

Please complete the "SEALED BID" information on the next page

C81 Mix (71-015-25)

T23N, R01E, SEC. 21; T23N, R01E, SEC. 26; T23N, R01E, SEC. 27; T23N, R01E,

In response to the notice of sale to be held 9:00 a.m. (local time) on March 4, 2026, I am hereby submitting my sealed bid ( firm offer) for the following forest products to be cut. Bids for individual species must be at or above the advertised price. All non-responsive bid forms may be rejected.

<u>PRODUCTS &amp; SPECIES</u>	<u>ESTIMATED VOLUME*</u>	<u>ADVERTISED PRICE</u>	<u>BID PRICE/UNIT</u>
<b>Sawtimber</b>			
Black/Red (Hybrid) Oak	120.6 MBF	\$ 128.00/MBF	\$ _____
Jack Pine	10.8 MBF	\$ 30.00/MBF	\$ _____
Mixed Aspen	226.1 MBF	\$ 80.00/MBF	\$ _____
Red Maple	42.0 MBF	\$ 70.00/MBF	\$ _____
Red Oak	211.0 MBF	\$ 135.00/MBF	\$ _____
White Oak	70.3 MBF	\$ 77.00/MBF	\$ _____
White Pine	112.5 MBF	\$ 66.00/MBF	\$ _____
<b>Pulpwood</b>			
Jack Pine	777 Cords	\$ 11.70/Cord	\$ _____
Mixed Aspen	1,699 Cords	\$ 33.35/Cord	\$ _____
Mixed Hardwood	882 Cords	\$ 21.70/Cord	\$ _____
Mixed Oak	1,149 Cords	\$ 18.75/Cord	\$ _____
Red Pine	794 Cords	\$ 42.50/Cord	\$ _____
White Pine	203 Cords	\$ 34.15/Cord	\$ _____

\*The volumes are statistically estimated within plus (+) or minus (-) 9.19 percent at 95% confidence level. These estimated volumes are final and not subject to adjustment. Prospective bidders are urged to examine this timber and to make their own estimates of quantity and quality.

I understand that any or all bids may be rejected. All bids must be signed and all bid items must be bid or the bid form may be rejected. I also understand that consideration and awarding a contract will be based upon my past performance and ability to complete the contract based upon equipment and staffing subject to my control .

FEDERAL ID: \_\_\_\_ - \_\_\_\_ - \_\_\_\_ or SOCIAL SECURITY NUMBER: \_\_\_\_ - \_\_\_\_ - \_\_\_\_

Company or individual bidding: \_\_\_\_\_

Company representative's name: \_\_\_\_\_

Address: \_\_\_\_\_

City: \_\_\_\_\_ State: \_\_\_\_\_ Zip: \_\_\_\_\_

IF AVAILABLE, PLEASE PLACE THE PERSONALIZED LABEL FROM YOUR PROSPECTUS IN THE ABOVE BOX.

Individual or company representative's signature: \_\_\_\_\_ Date: \_\_\_\_\_

Phone number : \_\_\_\_\_ Email (optional): \_\_\_\_\_

**THE WINNING BIDDER MUST COMPLETE THE VERIFICATION OF WORKER'S DISABILITY COMPENSATION ACT  
COMPLIANCE (ON REVERSE SIDE IF DOUBLE SIDED) WITHIN 21 DAYS OF SALE AWARD DATE**



## TIMBER SALE VERIFICATION OF WORKER'S DISABILITY COMPENSATION ACT COMPLIANCE

As required by Act 317, P.A. 1969 (Worker's Compensation) and  
Part 5 of Act 451 of 1994, as amended.

### FOR DEPARTMENT USE ONLY

Sale Number (XX - XXX - XX - XX)

Forest Management Unit:

### VERIFICATION OF WORKER'S DISABILITY COMPENSATION ACT COMPLIANCE

- This verification must be completed and submitted within 21 days of contract award and prior to the issuance of the timber sale contract.
- In addition, if boxes 2B or 2C are checked, then Notice of Exclusion or Certificate of Insurance must be submitted within twenty-one (21) days of the contract award and prior to the issuance of the timber sale contract.
- All Information must be typed or printed except for written signatures.

Please Check Appropriate Categories:

1. My business is organized as (you **must** check one of the boxes below):
  - A. ☐ Sole Proprietorship (individual)
  - B. ☐ Partnership
  - C. ☐ Corporation
2. You **must** check one of the boxes below:
  - A. ☐ I certify my business is a sole proprietorship and it has no employees but the sole proprietor. I am not subject to the Worker's Compensation Laws.
  - B. ☐ I certify my business has satisfied its obligation to the Worker's Compensation Act through the use of an approved Notice of Exclusion (BWC-337, Rev. 5/96). I will provide a copy of the Notice of Exclusion within 21 days of the contract award. (For questions or a copy of the BWC-337, please call the Worker's Compensation Bureau at 517-322-1195).
  - C. ☐ I certify my business has a Worker's Compensation Policy. I will provide an original Certificate of Insurance within twenty-one (21) days of the contract award.
3. If you have checked item 2(A) or 2(B), you **must** indicate the number of **both** full-time and part-time employees, other than yourself, including family members and active partners (if none, you must enter "0").

\_\_\_\_\_ Full-time Employees

\_\_\_\_\_ Part-time Employees

Name of Business		Federal ID (or) Social Security No.
Address		Telephone (       )
City	State	ZIP

*I hereby certify that the above information is true and correct. I agree to notify the Michigan DNR of any changes that occur in factors affecting my coverage during any of my present and future operations.*

\_\_\_\_\_  
Signature of Owner or Authorized Representative

\_\_\_\_\_  
Title

\_\_\_\_\_  
Date

Please complete the "SEALED BID" information on the next page

Just A Taste Breakup (71-002-26)  
T22N, R01W, SEC. 23; T22N, R01W, SEC. 24; Roscommon COUNTY

In response to the notice of sale to be held 9:00 a.m. (local time) on March 4, 2026, I am hereby submitting my sealed bid ( firm offer) for the following forest products to be cut. Bids for individual species must be at or above the advertised price. All non-responsive bid forms may be rejected.

<u>PRODUCTS &amp; SPECIES</u>	<u>ESTIMATED VOLUME*</u>	<u>ADVERTISED PRICE</u>	<u>BID PRICE/UNIT</u>
<b>Sawtimber</b>			
B. T. Aspen	107.9 MBF	\$ 80.00/MBF	\$ _____
Black/Red (Hybrid) Oak	103.5 MBF	\$ 128.00/MBF	\$ _____
Red Oak	12.3 MBF	\$ 135.00/MBF	\$ _____
White Oak	8.6 MBF	\$ 77.00/MBF	\$ _____
<b>Pulpwood</b>			
Mixed Aspen	1,628 Cords	\$ 33.35/Cord	\$ _____
Mixed Hardwood	194 Cords	\$ 21.70/Cord	\$ _____
Mixed Oak	1,083 Cords	\$ 18.75/Cord	\$ _____
Red Pine	2 Cords	\$ 42.50/Cord	\$ _____
White Pine	26 Cords	\$ 34.15/Cord	\$ _____

\*The volumes are statistically estimated within plus (+) or minus (-) 14.86 percent at 95% confidence level. These estimated volumes are final and not subject to adjustment. Prospective bidders are urged to examine this timber and to make their own estimates of quantity and quality.

I understand that any or all bids may be rejected. All bids must be signed and all bid items must be bid or the bid form may be rejected. I also understand that consideration and awarding a contract will be based upon my past performance and ability to complete the contract based upon equipment and staffing subject to my control .

FEDERAL ID: \_\_\_\_ - \_\_\_\_ - \_\_\_\_ or SOCIAL SECURITY NUMBER: \_\_\_\_ - \_\_\_\_ - \_\_\_\_  
 Company or individual bidding: \_\_\_\_\_  
 Company representative's name: \_\_\_\_\_  
 Address: \_\_\_\_\_  
 City: \_\_\_\_\_ State: \_\_\_\_\_ Zip: \_\_\_\_\_

IF AVAILABLE, PLEASE PLACE THE PERSONALIZED LABEL FROM YOUR PROSPECTUS IN THE ABOVE BOX.

Individual or company representative's signature: \_\_\_\_\_ Date: \_\_\_\_\_

Phone number : \_\_\_\_\_ Email (optional): \_\_\_\_\_

**THE WINNING BIDDER MUST COMPLETE THE VERIFICATION OF WORKER'S DISABILITY COMPENSATION ACT  
COMPLIANCE (ON REVERSE SIDE IF DOUBLE SIDED) WITHIN 21 DAYS OF SALE AWARD DATE**



## TIMBER SALE VERIFICATION OF WORKER'S DISABILITY COMPENSATION ACT COMPLIANCE

As required by Act 317, P.A. 1969 (Worker's Compensation) and  
Part 5 of Act 451 of 1994, as amended.

### FOR DEPARTMENT USE ONLY

Sale Number (XX - XXX - XX - XX)

Forest Management Unit:

### VERIFICATION OF WORKER'S DISABILITY COMPENSATION ACT COMPLIANCE

- This verification must be completed and submitted within 21 days of contract award and prior to the issuance of the timber sale contract.
- In addition, if boxes 2B or 2C are checked, then Notice of Exclusion or Certificate of Insurance must be submitted within twenty-one (21) days of the contract award and prior to the issuance of the timber sale contract.
- All information must be typed or printed except for written signatures.

Please Check Appropriate Categories:

1. My business is organized as (you **must** check one of the boxes below):
  - A. ☐ Sole Proprietorship (individual)
  - B. ☐ Partnership
  - C. ☐ Corporation
2. You **must** check one of the boxes below:
  - A. ☐ I certify my business is a sole proprietorship and it has no employees but the sole proprietor. I am not subject to the Worker's Compensation Laws.
  - B. ☐ I certify my business has satisfied its obligation to the Worker's Compensation Act through the use of an approved Notice of Exclusion (BWC-337, Rev. 5/96). I will provide a copy of the Notice of Exclusion within 21 days of the contract award. (For questions or a copy of the BWC-337, please call the Worker's Compensation Bureau at 517-322-1195).
  - C. ☐ I certify my business has a Worker's Compensation Policy. I will provide an original Certificate of Insurance within twenty-one (21) days of the contract award.
3. If you have checked item 2(A) or 2(B), you **must** indicate the number of **both** full-time and part-time employees, other than yourself, including family members and active partners (if none, you must enter "0").

\_\_\_\_\_ Full-time Employees

\_\_\_\_\_ Part-time Employees

Name of Business		Federal ID (or) Social Security No.
Address		Telephone (       )
City	State	ZIP

*I hereby certify that the above information is true and correct. I agree to notify the Michigan DNR of any changes that occur in factors affecting my coverage during any of my present and future operations.*

\_\_\_\_\_  
Signature of Owner or Authorized Representative

\_\_\_\_\_  
Title

\_\_\_\_\_  
Date

Please complete the "SEALED BID" information on the next page