



**DEPARTMENT OF NATURAL RESOURCES  
STATE OF MICHIGAN  
TIMBER SALE PROSPECTUS #7850**

SCHEDULED SALE DATE AND TIME: 10:00 a.m. (local time) on May 11, 2026.

LOCATION: SAULT DNR CUSTOMER SERVICE CENTER, 4131 S. M-129, SAULT STE MARIE, MI 49783.

PROSPECTUS NOTE: The bidder is advised to inspect the sale area and review the location, estimated volumes, operating costs and contract terms of proposed sales. Please be aware that some landowners may request 60 days or more notice for access across their land.

Notice is hereby given that bids will be received by the Unit Manager, SAULT STE MARIE MANAGEMENT UNIT, for certain timber on the following described lands:

GNA2 Cork Hardwoods (45-803-26) / T46N, R05W, SEC. 5 , W1/2SW.

T46N, R05W, SEC. 6 , NW,W1/2NE,N1/2SW,SESW,SE.

T46N, R05W, SEC. 7 , N1/2NE.

T46N, R05W, SEC. 8 , NWNW.

T46N, R06W, SEC. 1 , SENE,NESE.

T47N, R05W, SEC. 31, SWSE.

Chippewa County, Advertised Price \$90,717.35, 415.0 Acres, Hardwood, Sugar Maple.

SALE NOTE: GNA Sale. A small area in the northern part of the sale will need to be cut during a dry summer or frozen winter conditions. Some road work will be needed to facilitate trucking. Road trees have been marked accordingly.

Access may be through private or other public land.

GNA2 Cork Pines (45-804-26) / T46N, R05W, SEC. 7 , NW,SWNE,W1/2SW.

T46N, R06W, SEC. 12, NW,NE,E1/2SW,SE.

Chippewa County, Advertised Price \$582,287.90, 331.3 Acres, Red Pine, Hardwood.

SALE NOTE: GNA Sale. North Road is plowed by the county in the winter months. Operations cannot occur in Payment Units 2 and 6-9 from March 1 - July 31 due to an active hawk nest.

Access may be through other public land.

GNA2 Walleye (45-805-26) / T45N, R05W, SEC. 6 , NENW,S1/2NW,W1/2NE,N1/2SW,SWSW.

T45N, R05W, SEC. 7 , NWNW.

T45N, R06W, SEC. 1 , NW,NE,SW,SE.

T45N, R06W, SEC. 12, N1/2NW,NWNE.

T45N, R06W, SEC. 2 , E1/2NE.

T46N, R05W, SEC. 31, SESW,SWSE.

T46N, R06W, SEC. 35, SESE.

T46N, R06W, SEC. 36, SESW.

Chippewa County, Advertised Price \$357,075.25, 347.5 Acres, Red Pine, White Pine.

SALE NOTE: GNA Sale. Majority of units have class A access to US-123. PU's 16-18 are selection harvest cut tree marked units. They do not have orange markings designating boundaries. Instead, timber type changes and blue marked cut trees are the key indicators. Work with the sale administer if the need arises. A high-speed skid trail is permitted in PU's 3, 7, and 15. Snowmobile trail 47 runs adjacent and through the sale area. Designated access into PU 3 is through PU 5 (See Timber Sale Map)

A recreation site such as a trail, pathway, or campground is within the sale area or the vicinity. Certain restrictions/specifications may be applicable including time restrictions. Access may be through other public land.

## BID INSTRUCTIONS (VER. 10/10/2022):

### 1. Scheduled Bid Location, Date, and Time (2/11)

Bids must be received by the Unit Manager, SAULT STE MARIE OFFICE, 4131 S. M-129, Sault Ste Marie, MI 49783, no later than 10:00 a.m. (local time) on May 11, 2026. For further information concerning this sale, contact Josh Brinks at 906-203-0210 extension .

### 2. Bidder's Qualifications (10/22)

If all or part of a timber sale was prepared by a private contractor, the contractor and that contractor's company are not permitted to bid on the timber sale. A person must be 18 years of age or older to purchase timber. Permanent employees of the Department of Natural Resources or members of their immediate household may not bid. Former employees, in the permanent or seasonal class, may not bid until 3 months after the last day of active duty. Bids will not be accepted from individuals or companies appearing on the DNR/FRD No-Bid List. This list contains the names of purchasers who previously failed to execute a contract within 21-days or who have a history of poor performance.

### 3. Preparation of Sealed Bids (5/16)

Bid Forms may be completed online thru Michigan DNR Timber Sale Online Bidding (OLB) at [www.michigan.gov/timberbidding](http://www.michigan.gov/timberbidding) or by completing the hardcopy Bid Form found in the Timber Sale Prospectus . Hardcopy Bid Forms shall be manually signed in ink. Registration in OLB is considered your 'signature' for all bids submitted thru that system. Bid prices must be entered for each species and product in the Bid Price column for all material subject to bidding and all fill-in blanks must be completed. If erasures or other changes appear on the hardcopy Bid Form, each erasure or change must be initialed by the person signing the bid.

### 4. Submission of Sealed Bids (5/16)

Bid forms may be obtained from the Unit Manager or thru OLB. Bids may be submitted hardcopy or thru OLB. All hardcopy bids must be submitted on the bid form and in an envelope clearly identified as described in this section. NOTE: Only one bid form per bid envelope. Sealed bids must be submitted to the Unit office designated in the prospectus and must be submitted at or prior to the time established in the prospectus. The envelope should show on the outside (a) the sale name or number and (b) the date and time of bid opening, as shown in the prospectus. Bids received after the time specified in the sale prospectus are late bids and will be rejected.

It is possible for a bidder to submit multiple bids on a single sale. For example, a bid may be submitted hardcopy and a bid may be submitted thru OLB. Or, two bidders from the same company could both submit bids on the same sale. If this were to happen, the State would accept all bids received and award the contract accordingly. All bidding and contractual requirements would apply to all bids received.

### 5. Public Opening of Sealed Bids (7/16)

If conditions permit, the sealed bids will be publicly opened and posted at the time and place set in the prospectus.

If a bidder, present at a bid opening, has submitted bids on more than one sale, that bidder may withdraw their unopened bid envelopes or announce the withdrawal of their online bid after being declared the successful bidder on one sale.

### 6. Award of Contract (1/11)

Award of the contract will be made to the Bidder whose bid, conforming to the prospectus, is most advantageous to the State of Michigan on the basis of total value at rates bid for the estimated quantities. The State reserves the right to reject any bid or waive any minor irregularity in bids received. A written award mailed (or otherwise furnished) to the successful Bidder shall be deemed to result in a binding contract without further action by either party.

### 7. Down Payment (1/11)

The Bidder to whom award is made must make a down payment within 21 days of the sale award. The amount of the down payment will be calculated as shown in the Bond and Payment Schedule of this prospectus. Only cash may be used to meet this requirement.

### 8. Performance Security (1/11)

As guarantee of faithful performance, a cash bond, certificate of deposit, surety bond or irrevocable letter of credit (LOC) is required within 21 days of the sale award. The amount of the performance security is shown in the Bond and

Payment Schedule of this prospectus. If an LOC or surety is used, the coverage must extend for at least 6 months beyond the contract expiration.

#### 9. Worker's Compensation (10/22)

Purchaser shall obtain worker's compensation insurance to cover claims under Michigan's Worker's Disability Compensation Act of 1969 or similar employee benefit act of any other state applicable to an employee. Verification of Worker's Disability Compensation Act Compliance must be completed and submitted within 21 days of contract award and prior to the issuance of the timber sale contract. In addition, if applicable, Notice of Exclusion or Certificate of Insurance must also be submitted.

#### 10. Timber Sale Contract (10/22)

Additional conditions and requirements common to all timber sales are listed on the timber sale contract (R4031) and are available on line at [www.michigan.gov/timber](http://www.michigan.gov/timber). Contact the Unit Manager for additional information or a sample contract. Within 21 days of the date of the award letter, the bidder must sign the contract and provide the required down payment, performance security, and verification of worker's disability compensation. The down payment and performance security shall be in accordance with the provisions of the timber sale contract, in the sums stated in this prospectus. If these actions are not taken, then the Bidder, the Bidder's corporation, and the corporation's principals may not be permitted to bid on State timber sales for a period of 3 months after the first offense, 6 months after the second offense, and 1 year after the third offense. An offense will only be counted against the Bidder for 5 years. In addition, the Bidder certifies that if awarded this contract, the Bidder will complete the timber sale contract in accordance with its terms and any modifications thereof including requirements to purchase, cut, and remove the included timber by the expiration date.

Payment Unit values in the State Forest Timber Sale Contract are calculated based on the advertised value of the Payment Unit as a percentage of the total advertised value of the contract. The advertised value of each Payment Unit is given in the Description of Timber by Payment Unit table on the Timber Sale Information page. For example, if the value of Payment Unit 1 is advertised as \$1,500 and the total Timber Sale value is advertised as \$10,000, the contract price for Payment Unit 1 will be 15% of the total bid price ( $\$1,500/\$10,000 * 100$ ).

#### 11. Disclaimer of Estimates and Bidder's Warranty of Inspection (10/22)

Before submitting this bid, the Bidder is advised and cautioned to inspect the sale area, review the requirements of the sale contract, and take other steps as may be reasonably necessary to ascertain the location, estimated volumes, construction estimates, and operating costs of the proposed sale. Failure to do so will not relieve the Bidder from responsibility for completing the contract.

The Bidder warrants that this bid is submitted solely on the basis of the Bidder's examination and inspection of the quality and quantity of the timber offered for sale and the Bidder's opinion of the value thereof and the costs of recovery. No reliance should be placed on the State of Michigan's estimates of timber quality, quantity or costs of recovery. Bidder further acknowledges that the State of Michigan: (i) expressly disclaims any warranty of fitness of timber for any purpose; (ii) offers this timber as is without any warranty of quality (merchantability) or quantity and (iii) expressly disclaims any warranty as to the quantity or quality of timber sold.

#### 12. Certification and Chain-of-Custody (10/22)

Unless otherwise indicated in the contract under section 7 – Other Conditions of the Sale Specific Conditions & Requirements, the area encompassed by this timber sale is certified to the standards of the Forest Stewardship Council (FSC) - Certificate #SCS-FM/COC-00090N and the Sustainable Forestry Initiative (SFI) - Certificate #NSF-SFIS-5Y031-SF5. Forest products from this sale may be delivered to the mill as "FSC 100% and / or SFI certified" as long as the contractor hauling the forest products is chain-of-custody (COC) certified or covered under a COC certificate from the destination mill. The purchaser is responsible for maintaining COC after leaving the sale area.

#### 13. Good Neighbor Authority (GNA) Requirements (10/22)

If the name of this timber sales contains the acronym GNA, it is authorized by the Good Neighbor Authority (GNA) and covered by various agreements between the U.S. Forest Service and the State. The timber sale occurs on federal land and the following conditions apply:

GNA contracts on US Forest Service land will not be awarded to purchasers on the Federal list of excluded parties. The System for Award Management (SAM) will be checked for active excluded parties prior to award of contract. In

addition, the Bidder to whom award is made must complete an Assurance Regarding Felony Conviction or Tax Delinquent Status for Corporate Applicants (AD-3031).

14. Good Neighbor Authority (GNA) Requirements, con't (10/22)

Bidder certifies, by signing this bid form, that to the best of Bidder's knowledge that the following representations are accurate and complete.

- a. That the Bidder and its principals are not presently debarred, suspended, proposed for debarment, declared ineligible, or voluntary excluded from timber sales (covered transactions) by any Federal department or agency.
- b. That the Bidder and its principals have not within a 3-year period preceding this bid been convicted of or had a civil judgment rendered against them for commission of fraud or a criminal offense in connection with obtaining , attempting to obtain, or performing a public (Federal, State, or local) transaction or contract under a public transaction; violation of Federal or State antitrust statutes or commission of embezzlement, theft, forgery, bribery, falsification or destruction of records, making false statements, or receiving stolen property.
- c. That the Bidder and its principals are not presently indicted for or otherwise criminally or civilly charged by a governmental entity (Federal, State, or local) with commission of any of the offenses enumerated in paragraph b of this certification.
- d. That the Bidder and its principals have not within a 3-year period preceding this bid had one or more public transactions (Federal, State, or local) terminated for breach or default of a timber or forest product contract.

Bidders that cannot certify this requirement, in whole or in part, shall submit an explanation with their bid.

Scott Bowen  
Director



# TIMBER SALE INFORMATION

GNA2 Cork Hardwoods (45-803-26)

T46N, R05W, SEC. 5; T46N, R05W, SEC. 6; T46N, R05W, SEC. 7; T46N, R05W, SEC. 8; T46N, R06W, SEC. 1; T47N, R05W, SEC. 31.

SALE NOTE: GNA Sale. A small area in the northern part of the sale will need to be cut during a dry summer or frozen winter conditions. Some road work will be needed to facilitate trucking. Road trees have been marked accordingly.

Access may be through private or other public land.

A timber sale contract for this lump sum, sealed bid timber sale will be awarded to the responsible bidder offering the highest sealed bid price. All units of volume listed below were estimated using the Inventory Manager computer program and the new Michigan taper model. Bids must be at or above the following advertised price for each product and species:

<u>PRODUCTS &amp; SPECIES</u>	<u>ESTIMATED UNITS*</u>	<u>ADVERTISED PRICE</u>
Sawtimber		
Black Cherry	2.8 MBF	\$ 84.00 / MBF
Red Maple	22.3 MBF	\$ 81.00 / MBF
Sugar Maple	114.2 MBF	\$ 293.00 / MBF
Pulpwood		
Balsam Fir	50 Cords	\$ 8.45 / Cord
Mixed Hardwood	3,717 Cords	\$ 14.55 / Cord
White Spruce	74 Cords	\$ 9.60 / Cord

\* The total volume is statistically estimated within plus (+) or minus (-) 11.52 percent. There are an estimated 4,166 cords on this timber sale, plus or minus 480 cords at the 95% confidence level. The estimated units are final and not subject to adjustment. Prospective bidders are urged to examine this timber and to make their own estimates of quantity and quality.

### BOND AND PAYMENT SCHEDULE:

1. A bond in the amount of \$4,536.00 to insure faithful performance of the conditions of the contract will be deposited by the successful bidder within 21 days of the sale award.
2. Cutting in any sale or unit without the required advance payment would be considered a trespass.
3. Total payment must be paid in advance or according to the following schedule :
  - (a) Ten percent (10%) of the sale value must be paid within 21 days of the sale award.
  - (b) The 10% down payment will be credited towards the first unit cut.
  - (c) Payment for each of the following units must be made before cutting begins in that unit:

PAYMENT UNIT NUMBER	PERCENT OF TOTAL SALE VALUE
01	17.1%
02	6.5%
03	8.2%
04	16.5%
05	16.7%
06	16.4%
07	3.7%
08	4.1%
09	5.0%
10	5.8%

4. If no cutting takes place, the 10% down payment will not be refunded.
5. Operations on the contract issued will terminate on 12/31/2029.

### SALE STATISTICS

Volumes were calculated in cubic feet using the Michigan taper model. Cubic foot volume includes all wood inside bark for the product indicated. For display purposes, cubic feet were converted to cords and MBF using a simple conversion factor, e.g. 79 cubic feet per cord and 185 cubic feet per MBF. The cubic foot volumes are precise; the cords and MBF volumes are not. Cubic foot volume cannot be directly converted to cords or boards with precision.

## SALE VOLUMES

The total estimated sale volume may not equal the sum of the species/products due to the nature of statistical calculations associated with double sampling methodology.

VOLUME			STATISTICAL RANGE IN CORDS	
TOTAL CUBIC FEET	TOTAL CORDS	PERCENT ERROR	MINIMUM	MAXIMUM
329,087	4,166	11.52%	3,686	4,646

## VDU VOLUMES

A VDU is a Volume Determination Unit. Volumes and their associated statistics are calculated at the VDU level and summarized to the sale level. There is often a one to one relationship between a VDU and a Payment Unit, but not always, depending on the cruise design. Refer to the VDU TO PAYMENT UNIT table.

	VOLUME			RANGE IN CORDS	
VDU	TOTAL CUBIC FEET	TOTAL CORDS	PERCENT ERROR	MINIMUM	MAXIMUM
4	257,794	3,263	13.68%	2,817	3,710
5	43,912	556	28.39%	398	714
9	27,380	347	25.58%	258	435
<b>TOTAL:</b>	<b>329,087</b>	<b>4,166</b>		<b>3,473</b>	<b>4,859</b>

## VDU TO PAYMENT UNIT

When a VDU is associated with more than one Payment Unit (PU), the VDU volumes are assigned to the PU based on acres of the VDU within the PU.

VDU	VDU ACRES	PU	PU ACRES
4	209.4	1	55.4
		2	21.0
		3	26.3
		4	53.1
		5	53.6
5	188.4	6	52.9
		7	39.8
		8	43.1
		9	52.6
9	17.2	10	17.2
<b>TOTAL:</b>	<b>415.0</b>		<b>415.0</b>

**DESCRIPTION OF TIMBER BY PAYMENT UNIT (PU)**

PU	MARKET GROUP	PRODUCT	QUANTITY	UNIT	ACRES	ADVERTISE PRICE
1	Black Cherry	Sawtimber    Pulpwood           White Spruce	0.5	MBF	55.5	\$15,599.30
	Red Maple		3.0	MBF		
	Sugar Maple		21.0	MBF		
	Balsam Fir		4	Cords		
	Mixed Hardwood		626	Cords		
	<i>Beech</i>		5	<i>Cords</i>		
	<i>Black Cherry</i>		32	<i>Cords</i>		
	<i>Ironwood</i>		3	<i>Cords</i>		
	<i>Red Maple</i>		210	<i>Cords</i>		
	<i>Sugar Maple</i>		376	<i>Cords</i>		
	White Spruce		2	Cords		
2	Black Cherry	Sawtimber    Pulpwood           White Spruce	0.2	MBF	21.0	\$5,910.20
	Red Maple		1.1	MBF		
	Sugar Maple		8.0	MBF		
	Balsam Fir		2	Cords		
	Mixed Hardwood		236	Cords		
	<i>Beech</i>		2	<i>Cords</i>		
	<i>Black Cherry</i>		12	<i>Cords</i>		
	<i>Ironwood</i>		1	<i>Cords</i>		
	<i>Red Maple</i>		79	<i>Cords</i>		
	<i>Sugar Maple</i>		142	<i>Cords</i>		
	White Spruce		1	Cords		
3	Black Cherry	Sawtimber    Pulpwood           White Spruce	0.3	MBF	26.3	\$7,431.00
	Red Maple		1.4	MBF		
	Sugar Maple		10.0	MBF		
	Balsam Fir		2	Cords		
	Mixed Hardwood		298	Cords		
	<i>Beech</i>		3	<i>Cords</i>		
	<i>Black Cherry</i>		15	<i>Cords</i>		
	<i>Ironwood</i>		2	<i>Cords</i>		
	<i>Red Maple</i>		100	<i>Cords</i>		
	<i>Sugar Maple</i>		178	<i>Cords</i>		
	White Spruce		1	Cords		
4	Black Cherry	Sawtimber    Pulpwood           White Spruce	0.6	MBF	53.1	\$14,964.25
	Red Maple		2.8	MBF		
	Sugar Maple		20.2	MBF		
	Balsam Fir		4	Cords		
	Mixed Hardwood		599	Cords		
	<i>Beech</i>		5	<i>Cords</i>		
	<i>Black Cherry</i>		30	<i>Cords</i>		
	<i>Ironwood</i>		4	<i>Cords</i>		
	<i>Red Maple</i>		201	<i>Cords</i>		
	<i>Sugar Maple</i>		359	<i>Cords</i>		
	White Spruce		2	Cords		
5	Black Cherry	Sawtimber    Pulpwood           White Spruce	0.6	MBF	53.6	\$15,124.70
	Red Maple		2.8	MBF		
	Sugar Maple		20.4	MBF		
	Balsam Fir		4	Cords		
	Mixed Hardwood		606	Cords		
	<i>Beech</i>		5	<i>Cords</i>		
	<i>Black Cherry</i>		31	<i>Cords</i>		
	<i>Ironwood</i>		4	<i>Cords</i>		
	<i>Red Maple</i>		203	<i>Cords</i>		
	<i>Sugar Maple</i>		363	<i>Cords</i>		
	White Spruce		2	Cords		
6	Black Cherry	Sawtimber	0.6	MBF	52.9	\$14,905.85

**DESCRIPTION OF TIMBER BY PAYMENT UNIT (PU), CON'T**

PU	MARKET GROUP	PRODUCT	QUANTITY	UNIT	ACRES	ADVERTISE PRICE			
6 con't	Red Maple	Sawtimber	2.8	MBF					
	Sugar Maple		20.1	MBF					
	Balsam Fir	Pulpwood	4	Cords					
	Mixed Hardwood		597	Cords					
	<i>Beech</i>		5	<i>Cords</i>					
	<i>Black Cherry</i>		30	<i>Cords</i>					
	<i>Ironwood</i>		4	<i>Cords</i>					
	<i>Red Maple</i>		200	<i>Cords</i>					
	<i>Sugar Maple</i>		358	<i>Cords</i>					
	White Spruce		2	Cords					
7	Red Maple	Sawtimber	1.7	MBF	39.7	\$3,389.55			
	Sugar Maple		3.6	MBF					
	Mixed Hardwood	Pulpwood	151	Cords					
	<i>Beech</i>		1	<i>Cords</i>					
	<i>Black Cherry</i>		21	<i>Cords</i>					
	<i>Ironwood</i>		1	<i>Cords</i>					
	<i>Red Maple</i>		10	<i>Cords</i>					
	<i>Sugar Maple</i>		118	<i>Cords</i>					
	8	Red Maple	Sawtimber	1.8			MBF	43.1	\$3,674.70
		Sugar Maple		3.9			MBF		
Mixed Hardwood		Pulpwood	164	Cords					
<i>Beech</i>			1	<i>Cords</i>					
<i>Black Cherry</i>			22	<i>Cords</i>					
<i>Ironwood</i>			2	<i>Cords</i>					
<i>Red Maple</i>			11	<i>Cords</i>					
<i>Sugar Maple</i>			128	<i>Cords</i>					
9		Red Maple	Sawtimber	2.2	MBF	52.6	\$4,494.60		
		Sugar Maple		4.8	MBF				
	Mixed Hardwood	Pulpwood	200	Cords					
	<i>Beech</i>		1	<i>Cords</i>					
	<i>Black Cherry</i>		27	<i>Cords</i>					
	<i>Ironwood</i>		2	<i>Cords</i>					
	<i>Red Maple</i>		14	<i>Cords</i>					
	<i>Sugar Maple</i>		156	<i>Cords</i>					
	10	Red Maple	Sawtimber	2.7	MBF			17.2	\$5,223.20
		Sugar Maple		2.2	MBF				
Balsam Fir		Pulpwood	30	Cords					
Mixed Hardwood			240	Cords					
<i>Black Cherry</i>			85	<i>Cords</i>					
<i>Red Maple</i>			88	<i>Cords</i>					
<i>Sugar Maple</i>			67	<i>Cords</i>					
White Spruce			64	Cords					
TOTAL:			139.3	MBF					
TOTAL:			3,841	Cords					

## Sale Specific Conditions & Requirements

**Sale Name: GNA2 Cork Hardwoods**

**Sale Number: 45-803-26 Seq#: 1**

### 1 - Sale Area

#### 1.2 - Boundaries

##### 1.2.1 - Painted Boundaries (9/19)

The sale boundary and Payment Unit boundaries are marked and identified by orange and red paint. Exterior sale boundary lines against private property are marked with red paint. Exterior sale boundary lines against USFS are marked with orange slashes. Interior Payment Unit boundaries are marked with orange dots. Exclusions and special protection areas are marked with orange slashes; no harvesting activities may occur within these areas. The painted boundary line trees are not Included Timber and are to be protected. Orange painted trees designating an interior Payment Unit boundary are only to be cut when marked in blue and all surrounding Payment Units have been paid.

### 2 - Timber Specifications

#### 2.1 - Included Timber

##### 2.1.1 - Clearcut Unit(s) with Unmerchantable Trees (6/14)

Within Payment Unit(s) 10, cut all trees that are two (2) inches or more at DBH, except red oak, if present. Do not cut any trees marked in orange. Special protection trees identified in accordance with condition 3.4.2, within clearcutting unit boundaries, are not Included Timber and are to be protected. Harvesting may not occur in this unit between April 15 through September 20.

##### 2.1.3 - Cut Tree Marked Unit(s) (12/08)

Within Payment Unit(s) 1 - 9, all trees are designated for cutting when marked with blue paint above and below stump height, regardless of merchantability.

#### 2.2 - Utilization

##### 2.2.12 - GNA, Cut and Remove Included Timber (3/18)

Unless provided otherwise herein, the DNR agrees to sell and permit Purchaser to cut and remove Included Timber, and Purchaser agrees to purchase, cut, and remove Included Timber.

### 3 - Payments

#### 3.3 - Pre-measured Sales

##### 3.3.4 - Dividing Payment Units (7/14)

Payment Unit(s) may be divided at the request of the Purchaser and upon approval of the Unit Manager. Dividing Payment Units is a contract modification which requires a Timber Sale Contract Amendment. There will be only one division per Payment Unit.

#### 3.4 - Damaged Timber

##### 3.4.1 - Damaged Timber (12/24)

General Condition and Requirement 3.4 Damaged Timber, defines liquidated damages for undesignated live merchantable trees which are cut or injured. No damage is acceptable to undesignated live merchantable trees. Within the Sale Area, if more than 5% of trees (> 4.5" DBH) within a specified area of the sale are damaged, liquidated damages will be assessed for all trees damaged. Rates will be in accordance with General Condition and Requirement 3.4 Damaged Timber.

##### 3.4.2 - Special Protection Trees (1/25)

The Purchaser shall not cut live or dead special protection trees within cutting units or clearings. Special protection trees are marked with orange paint. If Purchaser's operations have cut or damaged special protection trees through carelessness, the Purchaser shall pay double stumpage as fixed, agreed and liquidated damages for each special protection tree cut or damaged. Such payment does not constitute ownership of the undesignated timber.

##### 3.4.3 - Special Protection Areas (8/11)

The Purchaser shall protect special protection areas from damage by the Purchaser's operations. Special protection areas are

marked with an orange boundary line. The Purchaser shall not cut live or dead trees within special protection areas. If the Purchaser's operations have cut or damaged special protection areas through carelessness, the Purchaser shall pay \$5000 as fixed, agreed and liquidated damages for each acre or part thereof cut or damaged. Such payment does not constitute ownership of the undesignated timber.

## **4 - Transportation**

### 4.1 - Construction

#### 4.1.3 - Slash and Earthen Piles (8/04)

Piles or windrows of earth along roads and landings that have been widened or constructed shall be leveled. Slash from road maintenance or construction, including stumps, shall be dispersed throughout the sale.

#### 4.1.4 - Timber Removed for Construction (3/23)

Trees cut or damaged in the process of pre-approved road, landing, or skid trail construction will be decked in an area separate from other Designated Timber and not removed until measured by the Sale Administrator. Payment will be made at contract prices or average prices, if not on the contract.

#### 4.1.6 - Road Construction (4/24)

Construction of new roads or improvements of existing roads shall be done in such a way as to minimize the environmental and visual impacts. Merchantable trees shall be cut and utilized unless otherwise directed. Non-merchantable trees shall be severed and laid flat on the ground. Slash shall be scattered, not left in windrows, and kept a minimum of 10 feet back from the road edge. Stumps shall be set upright, not left on edge, and be moved at least 10 feet away from the road edge. Disturbed soil shall be feathered into the woods and not left in berms or windrows.

#### 4.1.7 - Road Closure (10/11)

All new roads built into the sale must be blocked to vehicle traffic upon completion of the sale. Overgrown roads that are reopened shall be considered new roads. Some existing roads may also need to be closed; see the Timber Sale Map for locations. In general, this will require constructing a four (4') foot high berm of stumps and logs covered with earth. Stumps and brush must be placed along the remainder of the trail. These roads must be rendered impassable to cars and trucks. All stumps from road building and landing construction must be reserved to block any newly constructed roads upon completion of the sale. These stumps must be scattered along the road system to prohibit vehicular movement. Temporary berms may be required if no sale activity occurs for 30 or more consecutive days. Contact the Sale Administrator for specific details of design and placement.

### 4.4 - Access

#### 4.4.1 - Private property access (3/11)

Permission for access across private land is the responsibility of the Purchaser. Should the Purchaser desire to cross private land, a copy of the written permission from the private landowner may be required by the DNR.

#### 4.4.5 - Federal Property Access (3/11)

Permission for access across federal land has been obtained by the DNR.

## **5 - Operations**

### 5.1 - Notification

#### 5.1.1 - Pre-sale Conference (10/25)

A pre-sale conference on site between the Purchaser and Sale Administrator is required prior to beginning any operations to determine landing and road locations. The Unit Manager or his/her representative must be contacted at least 5 days in advance to schedule the conference.

### 5.2 - Conduct of Operations

#### 5.2.2 - Hazard Trees/Snags

##### 5.2.2.1 - Den Trees (10/16)

Obvious hollow and/or den trees shall be protected and left standing unless they are a safety hazard.

#### 5.2.3 - Operating Restrictions

#### 5.2.3.1 - Operating Restrictions (9/11)

Within Payment Unit(s) 10, unless changed by written agreement, cutting, skidding, and decking are not permitted during the period of 04/15 to 09/20. This restriction is because this unit is a wildlife opening.

#### 5.2.3.3 - Bark Slippage Restriction (3/09)

Within Payment Unit(s) 1 - 9, unless changed by written agreement, cutting and skidding are not permitted during the period of May 1 to July 15. This restriction is because of bark slippage. This spec can be waived with written permission from the Unit Manager, based on operator performance.

#### 5.2.22 - Operating Caution

##### 5.2.22.1 - Operating Caution (6/11)

It is recommended, but not required, that within Payment Unit(s) 1 & 2, cutting, skidding, and hauling occur during dry summer or frozen winter conditions. The reason for the recommendation is because of wet soils.

#### 5.2.32 - Decking/Landing Restoration (9/13)

All decking and landing areas must have the surface area restored to a condition equal to or better than before. This is to ensure the proper regeneration of the stand. Wood debris, chips and "cookies" from trimmings must be removed or scattered away from landing and loading areas and may not be windrowed on the edge.

#### 5.2.38 - No Decking Against Live Trees (2/04)

Cut products may not be decked against unmarked or designated leave trees.

### 5.4 - Soil Protection

#### 5.4.1 - Rutting Restriction, General (7/16)

Operations are to cease immediately if equipment and weather conditions result in rutting of roads and/or skid trails which are 12 inches or greater in depth and 50 feet in length. The Unit Manager or his/her representative may restrict hauling and/or skidding if ruts exceed the specified depth. With the Unit Manager or his/her representative's approval, the Purchaser may return to the area when the risk of rutting has decreased.

#### 5.4.4 - Slope Protection (9/19)

Skid trails and roads on slopes shall be water barred with slash and stumps as soon as use is complete to prevent erosion.

### 5.6 - Debris and Waste Material

#### 5.6.2 - GNA, Equipment Cleaning (4/24)

(a) Areas, known by the DNR prior to timber sale advertisement, that are infested with invasive species of concern are shown on the Timber Sale Map. A current list of invasive species of concern and a map showing the extent of known infestations is available from the DNR. For purposes of this provision, "Off-Road Equipment" includes all logging and construction machinery, except for log trucks, chip vans, service vehicles, water trucks, pickup trucks, cars, and similar vehicles.

(b) Purchaser shall adhere to the following requirements with regard to cleaning "Off-Road Equipment":

(i) Prior to moving Off-Road Equipment onto the Sale Area, Purchaser shall identify the location of the equipment's most recent operation. Purchaser shall not move any Off-Road Equipment that last operated in an area infested with one or more invasive species of concern onto Sale Area without having cleaned such equipment of seeds, soil, vegetative matter, and other debris that could contain or hold seeds, and having notified the DNR, as provided in (iii). If the location of prior operation cannot be identified, then Purchaser shall assume that the location is infested with invasive species of concern.

(ii) Prior to moving Off-Road Equipment from a cutting unit that is shown on the Timber Sale Map to be infested with invasive species of concern to, or through any other area that is shown as being free of invasive species of concern, or infested with a different invasive species, Purchaser shall clean such equipment of seeds, soil, vegetative matter, and other debris that could contain or hold seeds, and shall notify the DNR, as provided in (iii).

(iii) Prior to moving any Off-Road Equipment subject to the cleaning requirements set forth above, Purchaser shall advise DNR of its cleaning measures and make the equipment available for inspection. DNR shall have two (2) days, excluding weekends and State holidays, to inspect equipment after it has been made available. After satisfactory inspection or after

such 2-day period, Purchaser may move the equipment as planned. Equipment shall be considered clean when a visual inspection does not disclose seeds, soil, vegetative matter, and other debris that could contain or hold seeds. Purchaser shall not be required to disassemble equipment unless so directed by the DNR after inspection.

(iv) If Purchaser desires to clean Off-Road Equipment on National Forest land, such as at the end of a project or prior to moving to, or through an area that is free of invasive species of concern, Purchaser shall obtain prior approval from the Unit Manager or his/her representative as to the location for such cleaning and measures, if any, for controlling impacts.

(v) Unit Manager or his/her representative may order delay, interruption, or modification of this Contract pursuant to Condition & Requirement 7.3 or 7.3.4.

(c) Nothing contained in this Condition & Requirement shall be interpreted as creating any warranty on the part of the DNR that all locations of invasive species of concern have been described herein, elsewhere in this Contract, or designated on the ground. Following sale advertisement, additional locations may be described or designated, and other species may be added to the list of invasive species of concern. In such event, the Unit Manager or his/her representative may order delay, interruption, or modification of this Contract pursuant to Condition & Requirement 7.3 or 7.3.4.

(d) The parties shall promptly communicate with one another with respect to description or designation of additional locations; discovery of locations of new species or new infestation; and, addition of species to the list of invasive species of concern.

## 5.8 - Protection of Endangered Species

### 5.8.4 - Red-shouldered Hawk or Goshawk (2) (8/25)

In the event that an active red-shouldered hawk or goshawk nest is found, the contract may be amended to protect the nest site until the nest is determined to be inactive. The value of the trees in this excluded area will be refunded or credited to the Purchaser. The nest will be buffered with a ten-chain radius (31 acre) protection area, centered on the nest tree, in which there will be no cutting or new roads constructed. Avoid human disturbance, including loading and skidding, in the protection area.

Within a one-half mile radius from the nest tree there shall be no harvest activities during the breeding period. For the northern goshawk, the restriction is from March 1 to July 31 (GNA). For the red-shouldered hawk, the restriction is from April 1 to August 31.

For a nest to be considered inactive, it must be observed as inactive 2 years in a row by a wildlife biologist.

### 5.8.9 - GNA, Bat Habitat and Roost Trees (7/25)

If bats are observed emerging from a tree prior to being felled, or if injured or dead bats are found after a tree is felled, notify the Unit Manager for coordination with Forest Service biologists. If the tree is determined to be a roost, the contract may be amended to include a no activity buffer (typically 150 feet radius around the roost tree or trees).

During operations if any sick, injured, and/or dead bats (regardless of species) are found in the Sale Area the Purchaser shall report its location to the Sale Administrator as soon as possible, but no more than 12 hours upon discovery.

## 6 - Safety and Fire Prevention

### 6.2 - Signing

#### 6.2.1 - Road Posting (10/20)

The Purchaser is responsible for posting and maintaining caution signs on McNearney Lake Road and North Road prior to beginning operations. The road must be posted at appropriate distances from the Sale Area to warn of logging activity and truck traffic. Signs must be removed when harvest operations are suspended or completed. The Purchaser will provide these signs.

## 7 - Other Conditions

### SKIP

#### 7.1.1 - GNA, Title (7/16)

General Condition & Requirement 7.1 is inapplicable. The following applies to this contract.

All right, title, and interest in and to any Included Timber shall remain in USDA Forest Service with the State of Michigan acting on behalf of the USDA Forest Service under this GNA contract, until it has been Measured, removed from Sale Area or other authorized cutting area, and paid for, at which time title shall vest in Purchaser. Title to any Included Timber that has been Measured and paid for, but not removed from Sale Area or other authorized cutting area by Purchaser on or prior to Termination Date, shall remain in USDA Forest Service.

### 7.3 - Contract Modifications

#### 7.3.3 - Modification for Reforestation (8/05)

When contractual work of Purchaser has been accepted for any Payment Unit identified on Sale Area Map, Payment Unit will be eliminated from the Sale Area on written notice so that reforestation operations can begin.

#### 7.3.4 - GNA, Contract Suspension and Modification (5/16)

(a) The Unit Manager may, by written order, delay or interrupt authorized operations under this contract or, notwithstanding Condition & Requirement 7.3, modify this contract, in whole or in part:

(i) To prevent environmental degradation or resource damage, including, but not limited to, harm to habitat, plants, animals, cultural resources, or cave resources;

(ii) To ensure consistency with land and resource management plans or other documents prepared pursuant to the National Environmental Policy Act of 1969, 42 USC 4321-4347;

(iii) To conduct environmental analysis, including, but not limited to, engaging in consultation pursuant to the Endangered Species Act of 1973, 16 USC 1531, et seq.; or

(iv) Upon agreement of the Forest Service, due to administrative appeal or litigation, regardless of whether the Unit Manager's order is required by a court order or this contract is named in such a proceeding.

(b) In the event of an order delaying or interrupting Purchaser's Operations under this Condition & Requirement, Purchaser's remedy shall be:

(i) a no cost contract extension,

(ii) reimbursement for Out-of-Pocket Expenses,

however, the foregoing remedies shall be available only to the extent that the Unit Manager's order was the sole and exclusive cause of the delay or interruption of Purchaser's operations.

(c) Remedies awarded to the Purchaser shall not be duplicative, and the Unit Manager shall have the right to structure remedies provided herein to avoid duplicative compensation.

(d) Purchaser agrees that this Condition & Requirement, and the remedies provided herein shall apply regardless of any finding by any court that the DNR failed to comply with any statute, regulation and/or policy in connection with awarding, advertising, or authorizing this sale, or a similar sale.

### 7.5 - Loss

#### 7.5.2 - GNA, Liability for Loss (7/16)

If Included Timber is destroyed or damaged by an unexpected event that changes the nature of Included Timber, such as wind, flood, insects, disease, or similar cause, the Purchaser shall bear the timber value loss resulting from such destruction or damage.

Deterioration or loss of timber value due to delay or interruption under 7.3.4 - GNA, contract suspension and modification, shall be borne by the party holding title. In this event, Included Timber to which USDA Forest Service holds title, Purchaser of the State GNA contract will not be obligated to remove and pay for such timber. This Subsection shall not be construed to relieve either party of liability for negligence.

## 7.10 - Certified Timber

### 7.10.1 - Non-Certified Timber (2/16)

The area encompassed by this timber sale is not certified to the standards of the Forest Stewardship Council (FSC) or the Sustainable Forestry Initiative (SFI). Forest products from this sale may not be delivered to the mill as "FSC and / or SFI certified". The lands within this sale belong to the National Forest system and are being managed by the State as part of a Good Neighbor Authority (GNA) agreement.



### TIMBER SALE MAP

This information provided by authority of Part 525, 1994 PA 451, as amended.

Sale Number <b>45-803-26</b>	Date 11/25/2025
Scale 1:15,840	Page 1
	Of 1

Forest Management Unit Hiawatha NF EZ	County Chippewa	Mapped By: Gabler
		Cruised By: DNR

Township 46N / 47N	Range 05W /	Section(s) and Subdivision(s)	N1/2NE; Sec. 8 NWNW; Sec. 1 SENE,NESE; Sec. 31 SWSE; Sec. 5 W1/2SW; Sec. 6 NW,W1/2NE,N1/2SW,SESW,SE; Sec. 7
-----------------------	----------------	----------------------------------	--

Cover Type			
A = Aspen	J = Jack Pine	O = Oak	U = Upland Brush
B = Paper Birch	K = Rock	P = Lowland Poplar	UM = Upland Mix Forest
C = Cedar	L = Lowland Brush	Q = Mixed Swamp Conifer	V = Bog or Marsh
D = Treed Bog	LM = Lowland Mix Forest	R = Red Pine	W = White Pine
E = Swamp Hardwoods	M = Maple, Beech, Birch	S = Black Spruce	X = Non Stocked
F = Spruce/Fir	MC = Mixed Conifer	T = Tamarack	Y = Sand
G = Grass	MD = Mixed Deciduous	Z = Water	
H = Hemlock	N = Marsh		

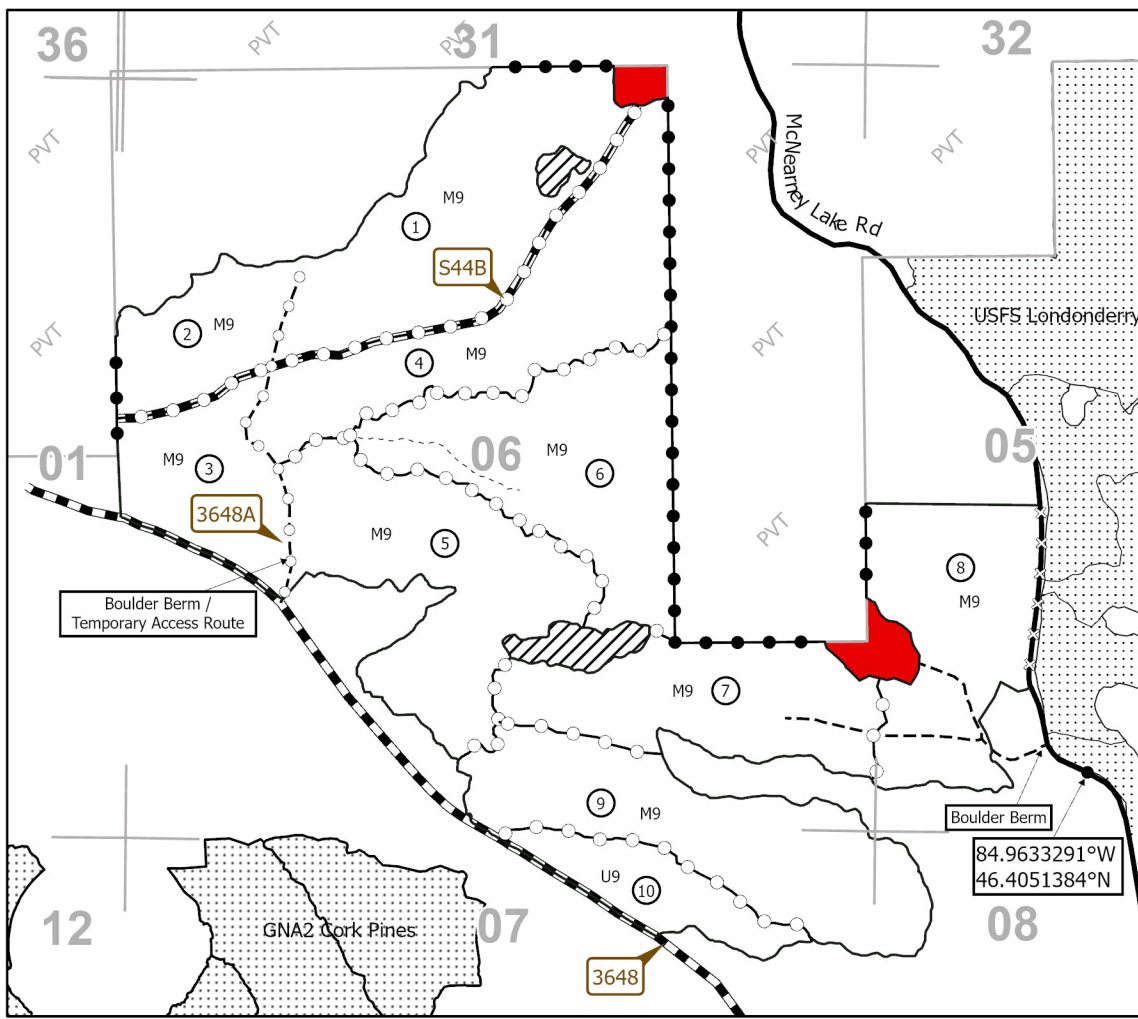
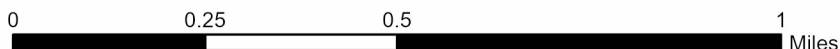
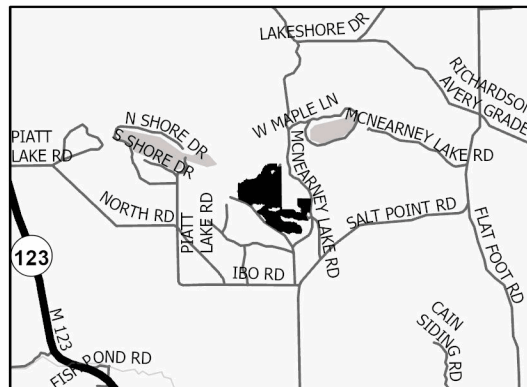
Density	
0 = Non Stocked	5 = Pole Timber Medium
1 = Seedling Sapling Poor	6 = Pole Timber Well
2 = Seedling Sapling Medium	7 = Saw Timber Poor
3 = Seedling Sapling Well	8 = Saw Timber Medium
4 = Pole Timber Poor	9 = Saw Timber Well

Payment Unit Number	Acres	Payment Unit Number	Acres
1	55.4	5	53.6
10	17.2	6	52.9
2	21	7	39.8
3	26.3	8	43.1
4	53.1	9	52.6

## GNA2 Cork Hardwoods

### 415.0 Acres

### Locator Map 1:200,000



### Legend

- Against USFS (Unpainted)
- Against USFS (Orange)
- Private Line (Red)
- Payment Unit (Orange Dots)
- Payment Unit (Road/Orange)
- Private Boundary
- USFS Road - Open
- Forest Access Route
- County Road
- Temporary Access Route
- Special Protection Areas
- Exclusion
- Nearby Timbersale

Use QR Code to open Map in App





## TIMBER SALE INFORMATION

GNA2 Cork Pines (45-804-26)  
 T46N, R05W, SEC. 7; T46N, R06W, SEC. 12.  
 Chippewa County (Advertised Price \$582,287.90)

SALE NOTE: GNA Sale. North Road is plowed by the county in the winter months. Operations cannot occur in Payment Units 2 and 6-9 from March 1 - July 31 due to an active hawk nest.

Access may be through other public land.

A timber sale contract for this lump sum, sealed bid timber sale will be awarded to the responsible bidder offering the highest sealed bid price. All units of volume listed below were estimated using the Inventory Manager computer program and the new Michigan taper model. Bids must be at or above the following advertised price for each product and species:

<u>PRODUCTS &amp; SPECIES</u>	<u>ESTIMATED UNITS*</u>	<u>ADVERTISED PRICE</u>
Sawtimber		
Sugar Maple	1.5 MBF	\$ 293.00 / MBF
Pulpwood		
Balsam Fir	60 Cords	\$ 8.45 / Cord
Jack Pine	50 Cords	\$ 20.00 / Cord
Mixed Hardwood	722 Cords	\$ 14.55 / Cord
Quaking Aspen	54 Cords	\$ 14.45 / Cord
Red Pine	7,587 Cords	\$ 74.95 / Cord
White Pine	29 Cords	\$ 14.15 / Cord

\* The total volume is statistically estimated within plus (+) or minus (-) 6.02 percent. There are an estimated 8,502 cords on this timber sale, plus or minus 512 cords at the 95% confidence level. The estimated units are final and not subject to adjustment. Prospective bidders are urged to examine this timber and to make their own estimates of quantity and quality.

### **BOND AND PAYMENT SCHEDULE:**

1. A bond in the amount of \$29,114.00 to insure faithful performance of the conditions of the contract will be deposited by the successful bidder within 21 days of the sale award.
2. Cutting in any sale or unit without the required advance payment would be considered a trespass.
3. Total payment must be paid in advance or according to the following schedule :
  - (a) Ten percent (10%) of the sale value must be paid within 21 days of the sale award.
  - (b) The 10% down payment will be credited towards the first unit cut.
  - (c) Payment for each of the following units must be made before cutting begins in that unit:

PAYMENT UNIT NUMBER	PERCENT OF TOTAL SALE VALUE
01	16.1%
02	17.9%
03	3.7%
04	15.0%
05	2.9%
06	14.7%
07	4.8%
08	18.2%
09	6.7%
4. If no cutting takes place, the 10% down payment will not be refunded.
5. Operations on the contract issued will terminate on 12/31/2029.

### **SALE STATISTICS**

Volumes were calculated in cubic feet using the Michigan taper model. Cubic foot volume includes all wood inside bark for the product indicated. For display purposes, cubic feet were converted to cords and MBF using a simple conversion factor, e.g. 79 cubic feet per cord and 185 cubic feet per MBF. The cubic foot volumes are precise; the cords and MBF volumes are not. Cubic foot volume cannot be directly converted to cords or boards with precision.

## SALE VOLUMES

The total estimated sale volume may not equal the sum of the species/products due to the nature of statistical calculations associated with double sampling methodology.

VOLUME			STATISTICAL RANGE IN CORDS	
TOTAL CUBIC FEET	TOTAL CORDS	PERCENT ERROR	MINIMUM	MAXIMUM
671,645	8,502	6.02%	7,989	9,014

## VDU VOLUMES

A VDU is a Volume Determination Unit. Volumes and their associated statistics are calculated at the VDU level and summarized to the sale level. There is often a one to one relationship between a VDU and a Payment Unit, but not always, depending on the cruise design. Refer to the VDU TO PAYMENT UNIT table.

	VOLUME			RANGE IN CORDS	
VDU	TOTAL CUBIC FEET	TOTAL CORDS	PERCENT ERROR	MINIMUM	MAXIMUM
28	29,739	376	22.81%	291	462
32	116,058	1,469	15.27%	1,245	1,693
33	56,557	716	20.60%	568	863
34	3,626	46	72.45%	13	79
38	113,986	1,443	16.20%	1,209	1,677
43	113,946	1,442	10.89%	1,285	1,600
45	98,926	1,252	20.27%	998	1,506
46	92,225	1,167	13.75%	1,007	1,328
47	20,816	263	43.42%	149	378
51	25,765	326	23.91%	248	404
<b>TOTAL:</b>	<b>671,645</b>	<b>8,502</b>		<b>7,013</b>	<b>9,990</b>

## VDU TO PAYMENT UNIT

When a VDU is associated with more than one Payment Unit (PU), the VDU volumes are assigned to the PU based on acres of the VDU within the PU.

VDU	VDU ACRES	PU	PU ACRES
28	16.2	6	14.0
		8	2.2
32	32.3	5	32.3
33	42.1	11	42.1
34	6.6	7	6.6
38	39.8	4	39.8
43	39.1	2	39.1
45	36.7	1	36.7
46	37.3	3	37.3
47	33.7	9	33.7
51	30.7	10	30.7
<b>TOTAL:</b>	<b>314.5</b>		<b>314.5</b>

**DESCRIPTION OF TIMBER BY PAYMENT UNIT (PU)**

PU	MARKET GROUP	PRODUCT	QUANTITY	UNIT	ACRES	ADVERTISE PRICE
1	Red Pine	Pulpwood	1,252	Cords	36.7	\$93,837.40
2	Balsam Fir Jack Pine Mixed Hardwood <i>Beech</i> <i>Black Cherry</i> <i>Paper Birch</i> <i>Red Maple</i> <i>Sugar Maple</i> Red Pine	Pulpwood	23 4 38 3 1 3 19 12 1,379	Cords Cords Cords Cords Cords Cords Cords Cords Cords	39.1	\$104,183.30
3	Balsam Fir Mixed Hardwood <i>Beech</i> <i>Red Maple</i> <i>Sugar Maple</i> Red Pine	Pulpwood	2 44 3 34 7 280	Cords Cords Cords Cords Cords Cords	30.7	\$21,643.10
4	Red Pine	Pulpwood	1,167	Cords	37.3	\$87,466.65
5	Balsam Fir Mixed Hardwood <i>Black Cherry</i> <i>Red Maple</i> <i>Sugar Maple</i> Red Pine	Pulpwood	4 42 2 10 30 218	Cords Cords Cords Cords Cords Cords	33.7	\$16,984.00
6	Sugar Maple Balsam Fir Mixed Hardwood <i>Beech</i> <i>Black Cherry</i> <i>Ironwood</i> <i>Paper Birch</i> <i>Red Maple</i> <i>Sugar Maple</i> Quaking Aspen Red Pine	Sawtimber Pulpwood	1.5 5 321 10 16 4 6 59 226 50 1,064	MBF Cords Cords Cords Cords Cords Cords Cords Cords Cords Cords	39.8	\$85,621.60
7	Jack Pine Mixed Hardwood <i>Beech</i> <i>Sugar Maple</i> Red Pine White Pine	Pulpwood	6 49 2 47 365 3	Cords Cords Cords Cords Cords Cords	36.1	\$28,232.15
8	Balsam Fir Jack Pine Mixed Hardwood <i>Beech</i> <i>Black Cherry</i> <i>Red Maple</i> <i>Sugar Maple</i> Red Pine White Pine	Pulpwood	19 26 17 2 2 3 10 1,390 18	Cords Cords Cords Cords Cords Cords Cords Cords Cords	35.8	\$105,363.10
9	Balsam Fir Jack Pine Mixed Hardwood <i>Beech</i> <i>Black Cherry</i> <i>Red Maple</i>	Pulpwood	7 14 211 2 10 75	Cords Cords Cords Cords Cords Cords	42.1	\$38,956.60

**DESCRIPTION OF TIMBER BY PAYMENT UNIT (PU), CON'T**

PU	MARKET GROUP	PRODUCT	QUANTITY	UNIT	ACRES	ADVERTISE PRICE
9 con't	<i>Sugar Maple</i>	<i>Pulpwood</i>	124	<i>Cords</i>		
	Quaking Aspen		4	Cords		
	Red Pine		472	Cords		
	White Pine		8	Cords		
TOTAL:			1.5	MBF		
TOTAL:			8,502	Cords		

## Sale Specific Conditions & Requirements

**Sale Name: GNA2 Cork Pines**

**Sale Number: 45-804-26 Seq#: 1**

### 1 - Sale Area

#### 1.2 - Boundaries

##### 1.2.1 - Painted Boundaries (9/19)

The sale boundary and Payment Unit boundaries are marked and identified by orange paint. Exterior sale boundary lines against federal are marked with orange paint. Interior Payment Unit boundaries are marked with orange dots. The painted boundary line trees are not Included Timber and are to be protected unless marked with blue paint.

### 2 - Timber Specifications

#### 2.1 - Included Timber

##### 2.1.3 - Cut Tree Marked Unit(s) (12/08)

Within Payment Unit(s) 3, 5, 7 & 9, all trees are designated for cutting when marked with blue paint above and below stump height, regardless of merchantability.

##### 2.1.7 - Leave Tree Marked Unit(s) (6/14)

Within Payment Unit(s) 1, 2, 4, 6 and 8, all trees, which meet minimum piece specifications in 2.2 Utilization, are designated for cutting except Hemlock, Oak, Yellow Birch and Cedar and trees marked with orange paint above and below stump height.

#### 2.2 - Utilization

##### 2.2.12 - GNA, Cut and Remove Included Timber (3/18)

Unless provided otherwise herein, the DNR agrees to sell and permit Purchaser to cut and remove Included Timber, and Purchaser agrees to purchase, cut, and remove Included Timber.

### 3 - Payments

#### 3.3 - Pre-measured Sales

##### 3.3.4 - Dividing Payment Units (7/14)

Payment Unit(s) may be divided at the request of the Purchaser and upon approval of the Unit Manager. Dividing Payment Units is a contract modification which requires a Timber Sale Contract Amendment. There will be only one division per Payment Unit.

#### 3.4 - Damaged Timber

##### 3.4.1 - Damaged Timber (12/24)

General Condition and Requirement 3.4 Damaged Timber, defines liquidated damages for undesignated live merchantable trees which are cut or injured.

No damage is acceptable to undesignated live merchantable trees. Within the Sale Area, if more than 5% of trees (> 4.5" DBH) within a specified area of the sale are damaged, liquidated damages will be assessed for all trees damaged. Rates will be in accordance with General Condition and Requirement 3.4 Damaged Timber.

### 4 - Transportation

#### 4.1 - Construction

##### 4.1.4 - Timber Removed for Construction (3/23)

Trees cut or damaged in the process of pre-approved road, landing, or skid trail construction will be decked in an area separate from other Designated Timber and not removed until measured by the Sale Administrator. Payment will be made at contract prices or average prices, if not on the contract.

##### 4.1.6 - Road Construction (4/24)

Construction of new roads or improvements of existing roads shall be done in such a way as to minimize the environmental and visual impacts. Merchantable trees shall be cut and utilized unless otherwise directed. Non-merchantable trees shall be severed and laid flat on the ground. Slash shall be scattered, not left in windrows, and kept a minimum of 10 feet back from

the road edge. Stumps shall be set upright, not left on edge, and be moved at least 10 feet away from the road edge. Disturbed soil shall be feathered into the woods and not left in berms or windrows.

#### 4.1.7 - Road Closure (10/11)

All new roads built into the sale must be blocked to vehicle traffic upon completion of the sale. Overgrown roads that are reopened shall be considered new roads. Some existing roads may also need to be closed; see the Timber Sale Map for locations. In general, this will require constructing a four (4') foot high berm of stumps and logs covered with earth. Stumps and brush must be placed along the remainder of the trail. These roads must be rendered impassable to cars and trucks. All stumps from road building and landing construction must be reserved to block any newly constructed roads upon completion of the sale. These stumps must be scattered along the road system to prohibit vehicular movement. Temporary berms may be required if no sale activity occurs for 30 or more consecutive days. Contact the Sale Administrator for specific details of design and placement.

#### 4.4 - Access

##### 4.4.5 - Federal Property Access (3/11)

Permission for access across federal land has been obtained by the DNR.

### 5 - Operations

#### 5.1 - Notification

##### 5.1.1 - Pre-sale Conference (10/25)

A pre-sale conference on site between the Purchaser and Sale Administrator is required prior to beginning any operations to determine landing and road locations. The Unit Manager or his/her representative must be contacted at least 5 days in advance to schedule the conference.

#### 5.2 - Conduct of Operations

##### 5.2.1 - Slash

###### 5.2.1.8 - Slash Height (12/08)

No slash or tree tops may exceed 24 inches in height.

##### 5.2.2 - Hazard Trees/Snags

###### 5.2.2.1 - Den Trees (10/16)

Obvious hollow and/or den trees shall be protected and left standing unless they are a safety hazard.

##### 5.2.3 - Operating Restrictions

###### 5.2.3.1 - Operating Restrictions (9/11)

Within Payment Unit(s) 2, 6, 7, 8 and 9, unless the hawk nest has been deemed inactive by the Forest Service for two consecutive years, cutting and skidding are not permitted during the period of 03/01 to 07/31. This restriction is because of a hawk nest.

###### 5.2.3.6 - Bark Beetle Restriction (1/25)

In the event drought creates a high risk of pine bark beetle infestation, pine is not to be cut during the period March 1 through July 1, unless all portions of trees greater than two (2) inches in diameter are removed from the Sale Area, reduced to chips, or treated to the satisfaction of the Unit Manager or his/her representative, within 15 days of being severed from the stump. Pine log decks, pulpwood piles and treetops that are piled for chipping in the fall or winter within a 1/4 mile of susceptible sites must be removed before March 15. Residual slash must not be placed in piles or rows and must be spread over the site for quick drying. The Department of Natural Resources will exercise this specification if the risk of damage warrants.

##### 5.2.32 - Decking/Landing Restoration (9/13)

All decking and landing areas must have the surface area restored to a condition equal to or better than before. This is to ensure the proper regeneration of the stand. Wood debris, chips and "cookies" from trimmings must be removed or scattered away from landing and loading areas and may not be windrowed on the edge.

##### 5.2.38 - No Decking Against Live Trees (2/04)

Cut products may not be decked against unmarked or designated leave trees.

## 5.4 - Soil Protection

### 5.4.1 - Rutting Restriction, General (7/16)

Operations are to cease immediately if equipment and weather conditions result in rutting of roads which are 12 inches or greater in depth and 50 feet in length. The Unit Manager or his/her representative may restrict hauling and/or skidding if ruts exceed the specified depth. With the Unit Manager or his/her representative's approval, the Purchaser may return to the area when the risk of rutting has decreased.

## 5.6 - Debris and Waste Material

### 5.6.2 - GNA, Equipment Cleaning (4/24)

(a) Areas, known by the DNR prior to timber sale advertisement, that are infested with invasive species of concern are shown on the Timber Sale Map. A current list of invasive species of concern and a map showing the extent of known infestations is available from the DNR. For purposes of this provision, "Off-Road Equipment" includes all logging and construction machinery, except for log trucks, chip vans, service vehicles, water trucks, pickup trucks, cars, and similar vehicles.

(b) Purchaser shall adhere to the following requirements with regard to cleaning "Off-Road Equipment":

(i) Prior to moving Off-Road Equipment onto the Sale Area, Purchaser shall identify the location of the equipment's most recent operation. Purchaser shall not move any Off-Road Equipment that last operated in an area infested with one or more invasive species of concern onto Sale Area without having cleaned such equipment of seeds, soil, vegetative matter, and other debris that could contain or hold seeds, and having notified the DNR, as provided in (iii). If the location of prior operation cannot be identified, then Purchaser shall assume that the location is infested with invasive species of concern.

(ii) Prior to moving Off-Road Equipment from a cutting unit that is shown on the Timber Sale Map to be infested with invasive species of concern to, or through any other area that is shown as being free of invasive species of concern, or infested with a different invasive species, Purchaser shall clean such equipment of seeds, soil, vegetative matter, and other debris that could contain or hold seeds, and shall notify the DNR, as provided in (iii).

(iii) Prior to moving any Off-Road Equipment subject to the cleaning requirements set forth above, Purchaser shall advise DNR of its cleaning measures and make the equipment available for inspection. DNR shall have two (2) days, excluding weekends and State holidays, to inspect equipment after it has been made available. After satisfactory inspection or after such 2-day period, Purchaser may move the equipment as planned. Equipment shall be considered clean when a visual inspection does not disclose seeds, soil, vegetative matter, and other debris that could contain or hold seeds. Purchaser shall not be required to disassemble equipment unless so directed by the DNR after inspection.

(iv) If Purchaser desires to clean Off-Road Equipment on National Forest land, such as at the end of a project or prior to moving to, or through an area that is free of invasive species of concern, Purchaser shall obtain prior approval from the Unit Manager or his/her representative as to the location for such cleaning and measures, if any, for controlling impacts.

(v) Unit Manager or his/her representative may order delay, interruption, or modification of this Contract pursuant to Condition & Requirement 7.3 or 7.3.4.

(c) Nothing contained in this Condition & Requirement shall be interpreted as creating any warranty on the part of the DNR that all locations of invasive species of concern have been described herein, elsewhere in this Contract, or designated on the ground. Following sale advertisement, additional locations may be described or designated, and other species may be added to the list of invasive species of concern. In such event, the Unit Manager or his/her representative may order delay, interruption, or modification of this Contract pursuant to Condition & Requirement 7.3 or 7.3.4.

(d) The parties shall promptly communicate with one another with respect to description or designation of additional locations; discovery of locations of new species or new infestation; and, addition of species to the list of invasive species of concern.

## 5.8 - Protection of Endangered Species

### 5.8.4 - Red-shouldered Hawk or Goshawk (2) (8/25)

In the event that an active red-shouldered hawk or goshawk nest is found, the contract may be amended to protect the nest

site until the nest is determined to be inactive. The value of the trees in this excluded area will be refunded or credited to the Purchaser. The nest will be buffered with a ten-chain radius (31 acre) protection area, centered on the nest tree, in which there will be no cutting or new roads constructed. Avoid human disturbance, including loading and skidding, in the protection area.

Within a one-half mile radius from the nest tree there shall be no harvest activities during the breeding period. For the northern goshawk, the restriction is from March 1 to July 31. For the red-shouldered hawk, the restriction is from April 1 to August 31.

For a nest to be considered inactive, it must be observed as inactive 2 years in a row by a wildlife biologist. An active nest was observed in 2025, and will effect payment units 2, 6, 7, 8 and 9.

#### 5.8.5 - Protection of Raptor Nests (3/13)

All trees with raptor nests will be protected if found during harvesting operations. Notification will be made to the Unit Manager or his/her representative who will notify the Wildlife Biologist so an onsite evaluation and recommendation can be made, if necessary.

#### 5.8.9 - GNA, Bat Habitat and Roost Trees (7/25)

If bats are observed emerging from a tree prior to being felled, or if injured or dead bats are found after a tree is felled, notify the Unit Manager for coordination with Forest Service biologists. If the tree is determined to be a roost, the contract may be amended to include a no activity buffer (typically 150 feet radius around the roost tree or trees).

During operations if any sick, injured, and/or dead bats (regardless of species) are found in the Sale Area the Purchaser shall report its location to the Sale Administrator as soon as possible, but no more than 12 hours upon discovery.

## 6 - Safety and Fire Prevention

### 6.2 - Signing

#### 6.2.1 - Road Posting (10/20)

The Purchaser is responsible for posting and maintaining caution signs on North Road and interior trucking roads prior to beginning operations. The road must be posted at appropriate distances from the Sale Area to warn of logging activity and truck traffic. Signs must be removed when harvest operations are suspended or completed. The Purchaser will provide these signs.

## 7 - Other Conditions

### SKIP

#### 7.1.1 - GNA, Title (7/16)

General Condition & Requirement 7.1 is inapplicable. The following applies to this contract.

All right, title, and interest in and to any Included Timber shall remain in USDA Forest Service with the State of Michigan acting on behalf of the USDA Forest Service under this GNA contract, until it has been Measured, removed from Sale Area or other authorized cutting area, and paid for, at which time title shall vest in Purchaser. Title to any Included Timber that has been Measured and paid for, but not removed from Sale Area or other authorized cutting area by Purchaser on or prior to Termination Date, shall remain in USDA Forest Service.

### 7.3 - Contract Modifications

#### 7.3.3 - Modification for Reforestation (8/05)

When contractual work of Purchaser has been accepted for any Payment Unit identified on Sale Area Map, Payment Unit will be eliminated from the Sale Area on written notice so that reforestation operations can begin.

#### 7.3.4 - GNA, Contract Suspension and Modification (5/16)

(a) The Unit Manager may, by written order, delay or interrupt authorized operations under this contract or, notwithstanding Condition & Requirement 7.3, modify this contract, in whole or in part:

(i) To prevent environmental degradation or resource damage, including, but not limited to, harm to habitat, plants, animals,

cultural resources, or cave resources;

(ii) To ensure consistency with land and resource management plans or other documents prepared pursuant to the National Environmental Policy Act of 1969, 42 USC 4321-4347;

(iii) To conduct environmental analysis, including, but not limited to, engaging in consultation pursuant to the Endangered Species Act of 1973, 16 USC 1531, et seq.; or

(iv) Upon agreement of the Forest Service, due to administrative appeal or litigation, regardless of whether the Unit Manager's order is required by a court order or this contract is named in such a proceeding.

(b) In the event of an order delaying or interrupting Purchaser's Operations under this Condition & Requirement, Purchaser's remedy shall be:

(i) a no cost contract extension,

(ii) reimbursement for Out-of-Pocket Expenses,

however, the foregoing remedies shall be available only to the extent that the Unit Manager's order was the sole and exclusive cause of the delay or interruption of Purchaser's operations.

(c) Remedies awarded to the Purchaser shall not be duplicative, and the Unit Manager shall have the right to structure remedies provided herein to avoid duplicative compensation.

(d) Purchaser agrees that this Condition & Requirement, and the remedies provided herein shall apply regardless of any finding by any court that the DNR failed to comply with any statute, regulation and/or policy in connection with awarding, advertising, or authorizing this sale, or a similar sale.

## 7.5 - Loss

### 7.5.2 - GNA, Liability for Loss (7/16)

If Included Timber is destroyed or damaged by an unexpected event that changes the nature of Included Timber, such as wind, flood, insects, disease, or similar cause, the Purchaser shall bear the timber value loss resulting from such destruction or damage.

Deterioration or loss of timber value due to delay or interruption under 7.3.4 - GNA, contract suspension and modification, shall be borne by the party holding title. In this event, Included Timber to which USDA Forest Service holds title, Purchaser of the State GNA contract will not be obligated to remove and pay for such timber. This Subsection shall not be construed to relieve either party of liability for negligence.

## 7.10 - Certified Timber

### 7.10.1 - Non-Certified Timber (2/16)

The area encompassed by this timber sale is not certified to the standards of the Forest Stewardship Council (FSC) or the Sustainable Forestry Initiative (SFI). Forest products from this sale may not be delivered to the mill as "FSC and / or SFI certified". The lands within this sale belong to the National Forest system and are being managed by the State as part of a Good Neighbor Authority (GNA) agreement.



### TIMBER SALE MAP

This information provided by authority of Part 525, 1994 PA 451, as amended.

Sale Number <b>45-804-26</b>	Date 12/17/2025
Scale 1:15,840	Page 1
	Of 1

Forest Management Unit Hiawatha NF EZ	County Chippewa	Mapped By: Gabler
		Cruised By: DNR

Township 46N	Range 05W /	Section(s) and Subdivision(s) Sec. 12 NW,NE,E1/2SW,SE; Sec. 7 NW,SWNE,W1/2SW;
-----------------	----------------	---

Cover Type			
A = Aspen	J = Jack Pine	O = Oak	U = Upland Brush
B = Paper Birch	K = Rock	P = Lowland Poplar	UM = Upland Mix Forest
C = Cedar	L = Lowland Brush	Q = Mixed Swamp Conifer	V = Bog or Marsh
D = Treed Bog	LM = Lowland Mix Forest	R = Red Pine	W = White Pine
E = Swamp Hardwoods	M = Maple, Beech, Birch	S = Black Spruce	X = Non Stocked
F = Spruce/Fir	MC = Mixed Conifer	T = Tamarack	Y = Sand
G = Grass	MD = Mixed Deciduous	Z = Water	
H = Hemlock	N = Marsh		

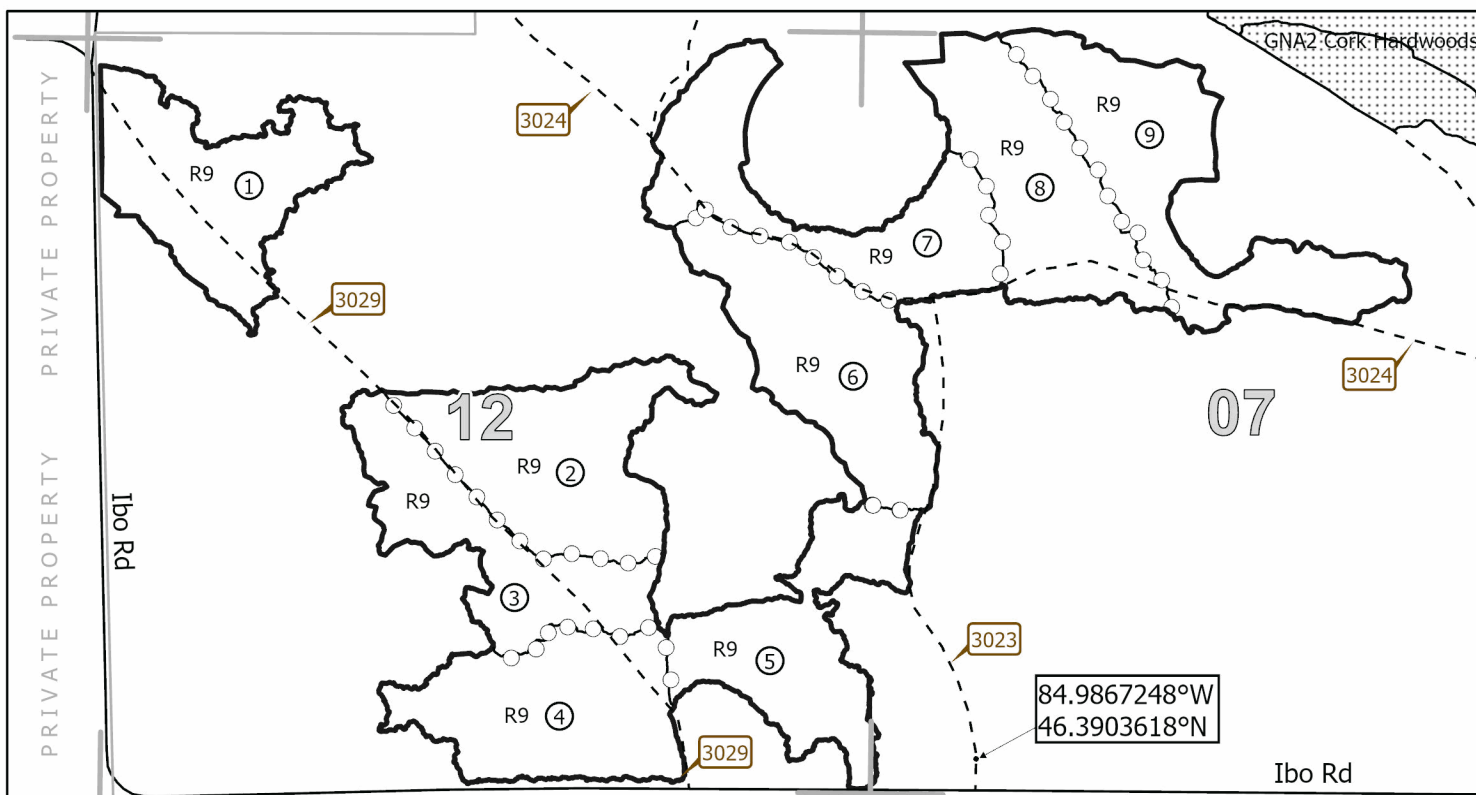
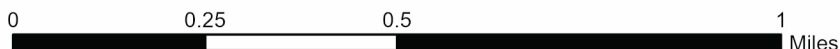
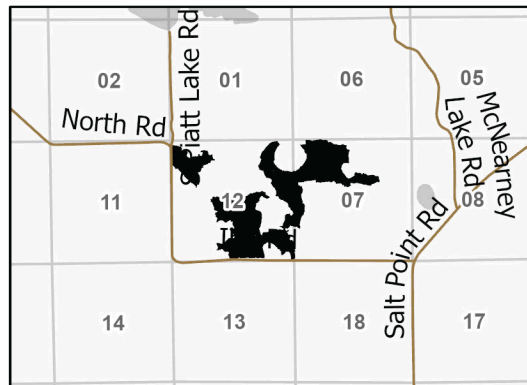
Density	
0 = Non Stocked	5 = Pole Timber Medium
1 = Seedling Sapling Poor	6 = Pole Timber Well
2 = Seedling Sapling Medium	7 = Saw Timber Poor
3 = Seedling Sapling Well	8 = Saw Timber Medium
4 = Pole Timber Poor	9 = Saw Timber Well

Payment Unit Number	Acres	Payment Unit Number	Acres
1	36.7	6	39.8
2	39.1	7	36.1
3	30.7	8	35.8
4	37.3	9	42.1
5	33.7		

## GNA2 Cork Pines

### 331.3 Acres

### Locator Map 1:100,000



### Legend

- Against USFS (Orange)
- Ibo Rd
- Payment Unit (Orange Dots)
- USFS - Forest Access Route
- Nearby Timber Sale
- Private Boundary

Use QR Code to open Map in App



## TIMBER SALE INFORMATION

### GNA2 Walleye (45-805-26)

T45N, R05W, SEC. 6; T45N, R05W, SEC. 7; T45N, R06W, SEC. 1; T45N, R06W, SEC. 12; T45N, R06W, SEC. 2; T46N, R05W, SEC. 31; T46N, R06W, SEC. 35; T46N, R06W, SEC. 36.

SALE NOTE: GNA Sale. Majority of units have class A access to US-123. PU's 16-18 are selection harvest cut tree marked units. They do not have orange markings designating boundaries. Instead, timber type changes and blue marked cut trees are the key indicators. Work with the sale administrator if the need arises. A high-speed skid trail is permitted in PU's 3, 7, and 15. Snowmobile trail 47 runs adjacent and through the sale area. Designated access into PU 3 is through PU 5 ( See Timber Sale Map)

A recreation site such as a trail, pathway, or campground is within the sale area or the vicinity. Certain restrictions/specifications may be applicable including time restrictions. Access may be through other public land.

A timber sale contract for this lump sum, sealed bid timber sale will be awarded to the responsible bidder offering the highest sealed bid price. All units of volume listed below were estimated using the Inventory Manager computer program and the new Michigan taper model. Bids must be at or above the following advertised price for each product and species:

<u>PRODUCTS &amp; SPECIES</u>	<u>ESTIMATED UNITS*</u>	<u>ADVERTISED PRICE</u>
Pulpwood		
Jack Pine	53 Cords	\$ 22.70 / Cord
Mixed Aspen	292 Cords	\$ 16.40 / Cord
Mixed Hardwood	2 Cords	\$ 16.50 / Cord
Red Pine	4,034 Cords	\$ 84.95 / Cord
White Pine	521 Cords	\$ 16.05 / Cord

\* The total volume is statistically estimated within plus (+) or minus (-) 5.79 percent. There are an estimated 6,473 cords on this timber sale, plus or minus 375 cords at the 95% confidence level. The estimated units are final and not subject to adjustment. Prospective bidders are urged to examine this timber and to make their own estimates of quantity and quality.

### **BOND AND PAYMENT SCHEDULE:**

1. A bond in the amount of \$17,854.00 to insure faithful performance of the conditions of the contract will be deposited by the successful bidder within 21 days of the sale award.
2. Cutting in any sale or unit without the required advance payment would be considered a trespass.
3. Total payment must be paid in advance or according to the following schedule :
  - (a) Ten percent (10%) of the sale value must be paid within 21 days of the sale award.
  - (b) The 10% down payment will be credited towards the first unit cut.
  - (c) Payment for each of the following units must be made before cutting begins in that unit:

PAYMENT UNIT NUMBER	PERCENT OF TOTAL SALE VALUE
01	0.8%
02	3.8%
03	11.2%
04	6.8%
05	7.3%
06	1.0%
07	8.9%
08	2.1%
09	6.3%
10	0.5%
11	0.5%
12	7.3%
13	0.4%
14	0.6%
15	5.1%
16	14.1%
17	11.0%
18	12.3%

4. If no cutting takes place, the 10% down payment will not be refunded.
5. Operations on the contract issued will terminate on 12/31/2029.

### **SALE STATISTICS**

Volumes were calculated in cubic feet using the Michigan taper model. Cubic foot volume includes all wood inside bark for the product indicated. For display purposes, cubic feet were converted to cords and MBF using a simple conversion factor, e.g. 79 cubic feet per cord and 185 cubic feet per MBF. The cubic foot volumes are precise; the cords and MBF volumes are not. Cubic foot volume cannot be directly converted to cords or boards with precision.

### SALE VOLUMES

The total estimated sale volume may not equal the sum of the species/products due to the nature of statistical calculations associated with double sampling methodology.

VOLUME			STATISTICAL RANGE IN CORDS	
TOTAL CUBIC FEET	TOTAL CORDS	PERCENT ERROR	MINIMUM	MAXIMUM
511,346	6,473	5.79%	6,098	6,848

### VDU VOLUMES

A VDU is a Volume Determination Unit. Volumes and their associated statistics are calculated at the VDU level and summarized to the sale level. There is often a one to one relationship between a VDU and a Payment Unit, but not always, depending on the cruise design. Refer to the VDU TO PAYMENT UNIT table.

VDU	VOLUME		PERCENT ERROR	RANGE IN CORDS	
	TOTAL CUBIC FEET	TOTAL CORDS		MINIMUM	MAXIMUM
1	141,774	1,795	12.00%	1,579	2,010
5	7,719	98	56.31%	43	153
6	37,263	472	21.59%	370	574
7	7,210	91	65.54%	31	151
8	16,364	207	32.12%	141	274
10	14,526	184	32.90%	123	244
41	7,342	93	64.14%	33	153
42	69,545	880	12.49%	770	990
43	38,474	487	18.57%	397	577
44	76,871	973	17.76%	800	1,146
45	29,453	373	21.89%	291	454
47	21,377	271	20.27%	216	325
100	2,047	26	57.15%	11	41
101	7,660	97	42.54%	56	138
102	33,721	427	24.66%	322	532
<b>TOTAL:</b>	<b>511,346</b>	<b>6,473</b>		<b>5,183</b>	<b>7,762</b>

### VDU TO PAYMENT UNIT

When a VDU is associated with more than one Payment Unit (PU), the VDU volumes are assigned to the PU based on acres of the VDU within the PU.

VDU	VDU ACRES	PU	PU ACRES
<b>TOTAL:</b>			

**DESCRIPTION OF TIMBER BY PAYMENT UNIT (PU)**

PU	MARKET GROUP	PRODUCT	QUANTITY	UNIT	ACRES	ADVERTISE PRICE
1	White Pine	Pulpwood	183	Cords	15.0	\$2,937.15
2	Red Pine	Pulpwood	161	Cords	11.2	\$13,676.95
3	Jack Pine Red Pine	Pulpwood	1 470	Cords Cords	51.1	\$39,949.20
4	Jack Pine Mixed Aspen <i>Quaking Aspen</i> Red Pine	Pulpwood	3 4 4 283	Cords Cords Cords Cords	21.2	\$24,174.55
5	Mixed Aspen <i>Quaking Aspen</i> Mixed Hardwood <i>Black Cherry</i> Red Pine	Pulpwood	15 15 1 1 305	Cords Cords Cords Cords Cords	29.0	\$26,172.25
6	Mixed Aspen <i>Quaking Aspen</i>	Pulpwood	207 207	Cords Cords	7.7	\$3,394.80
7	Red Pine	Pulpwood	373	Cords	24.2	\$31,686.35
8	Red Pine White Pine	Pulpwood	89 2	Cords Cords	7.5	\$7,592.65
9	Jack Pine Mixed Aspen <i>B. T. Aspen</i> Red Pine	Pulpwood	2 3 3 265	Cords Cords Cords Cords	15.7	\$22,606.35
10	Jack Pine White Pine	Pulpwood	43 50	Cords Cords	8.0	\$1,778.60
11	Mixed Aspen <i>B. T. Aspen</i> <i>Quaking Aspen</i> Red Pine White Pine	Pulpwood	34 4 30 3 60	Cords Cords Cords Cords Cords	8.5	\$1,775.45
12	Red Pine White Pine	Pulpwood	278 149	Cords Cords	28.5	\$26,007.55
13	Jack Pine Mixed Aspen <i>Quaking Aspen</i> Mixed Hardwood <i>Red Maple</i> White Pine	Pulpwood	4 22 22 1 1 70	Cords Cords Cords Cords Cords Cords	9.2	\$1,591.60
14	Red Pine	Pulpwood	26	Cords	1.8	\$2,208.70
15	Mixed Aspen <i>B. T. Aspen</i> Red Pine White Pine	Pulpwood	1 1 214 1	Cords Cords Cords Cords	13.1	\$18,211.75
16	Mixed Aspen <i>B. T. Aspen</i> Red Pine White Pine	Pulpwood	2 2 592 2	Cords Cords Cords Cords	36.2	\$50,355.30
17	Mixed Aspen <i>B. T. Aspen</i> Red Pine White Pine	Pulpwood	2 2 460 2	Cords Cords Cords Cords	28.1	\$39,141.90
18	Mixed Aspen <i>B. T. Aspen</i> Red Pine White Pine	Pulpwood	2 2 515 2	Cords Cords Cords Cords	31.5	\$43,814.15

TOTAL:	4,902 Cords
--------	-------------

## Sale Specific Conditions & Requirements

Sale Name: GNA2 Walleye

Sale Number: 45-805-26 Seq#: 1

### 1 - Sale Area

#### 1.2 - Boundaries

##### 1.2.1 - Painted Boundaries (9/19)

The sale boundary and Payment Unit boundaries are marked and identified by orange paint and timber type changes. Exterior sale boundary lines against USFS are marked with orange painted slashes. Except in PU's 16, 17, 18; exterior boundary lines are identified by timber type changes. Interior Payment Unit boundaries are marked with orange painted dots. Exclusion patches are marked with orange paint; no harvesting activities may occur within these areas. The painted boundary line trees are not Included Timber and are to be protected unless marked with blue paint. Orange painted trees designating an interior Payment Unit boundary, that are painted with blue paint, are only to be cut when all surrounding Payment Units have been paid.

### 2 - Timber Specifications

#### 2.1 - Included Timber

##### 2.1.3 - Cut Tree Marked Unit(s) (12/08)

Within Payment Unit(s) 1, 3, 8, and 10-18, all trees are designated for cutting when marked with blue paint above and below stump height, regardless of merchantability.

##### 2.1.4 - Designated Timber Unit(s) (6/17)

Within Payment Unit(s) 6, all Aspen trees are designated for cutting which meet minimum piece specifications in 2.2 Utilization.

##### 2.1.8 - Designated Plantation Row Unit(s) (12/24)

Within Payment Unit(s) 2, 4, 5, 7, and 9, all trees which meet minimum piece specifications in 2.2 Utilization, within designated plantation rows, are designated for cutting. Designated plantation rows are identified by blue paint on every tree in the row.

#### 2.2 - Utilization

##### 2.2.9 - No Chipping Permitted (12/08)

Within Payment Unit(s) 1-18, all wood must be removed by whole tree, tree segment, or roundwood. No chipping is permitted. tops may not be chipped.

##### 2.2.12 - GNA, Cut and Remove Included Timber (3/18)

Unless provided otherwise herein, the DNR agrees to sell and permit Purchaser to cut and remove Included Timber, and Purchaser agrees to purchase, cut, and remove Included Timber.

### 3 - Payments

#### 3.3 - Pre-measured Sales

##### 3.3.4 - Dividing Payment Units (7/14)

Payment Unit(s) 1-18 may be divided at the request of the Purchaser and upon approval of the Unit Manager. Dividing Payment Units is a contract modification which requires a Timber Sale Contract Amendment. There will be only one division per Payment Unit.

#### 3.4 - Damaged Timber

##### 3.4.1 - Damaged Timber (12/24)

General Condition and Requirement 3.4 Damaged Timber, defines liquidated damages for undesignated live merchantable trees which are cut or injured. No damage is acceptable to undesignated live merchantable trees. Within the Sale Area, if more than 5% of trees (> 4.5" DBH) within a specified area of the sale are damaged, liquidated damages will be assessed for all trees damaged. Rates will be in accordance with General Condition and Requirement 3.4 Damaged Timber.

##### 3.4.3 - Special Protection Areas (8/11)

The Purchaser shall protect special protection areas from damage by the Purchaser's operations. Special protection areas are

shown on the timber sale map and excluded from the sale area with orange paint. This special protection area is located adjacent to payment unit 17 on the west side of West Lake. Unless otherwise agreed, no ground disturbing activities within special protection areas. Ground disturbing activities include but are not limited to: operations such as cutting trees within, felling trees into, decking/piling, parking, staging, road improvements, road reconstruction, or skidding/forwarding. If the Purchaser's operations have cut or damaged special protection areas through carelessness, the Purchaser shall pay a \$10,000 fine. Such payment does not constitute ownership of the undesigned timber.

#### **4 - Transportation**

##### 4.1 - Construction

###### 4.1.3 - Slash and Earthen Piles (8/04)

Piles or windrows of earth along roads and landings that have been widened or constructed shall be leveled. Slash from road maintenance or construction, including stumps, shall be dispersed throughout the sale.

###### 4.1.7 - Road Closure (10/11)

All new roads built into the sale must be blocked to vehicle traffic upon completion of the sale. All new roads built into the sale must be blocked to vehicle traffic within 30 days of completion of hauling. Overgrown roads or roads that are blocked with berms or boulders that are reopened shall be considered new roads. In general, this will require constructing a four (4') foot high berm of stumps and logs covered with earth. These roads must be rendered impassable to cars and trucks.

Temporary berms may be required if no sale activity occurs for 30 or more consecutive days. Contact the Sale Administrator for specific details of design and placement.

##### 4.2 - Maintenance

###### 4.2.1 - Hauling Restriction (12/08)

Hauling may be restricted on forest roads by the Unit Manager or his/her representative. The restriction may occur during spring breakup and/or wet weather conditions on USFS Road 3566 and 3561.

###### 4.2.5 - Two Wheel Drive Condition (2/04)

All existing trail roads on and adjacent to the Sale Area must be passable by two-wheel drive traffic for the duration of the sale.

##### 4.4 - Access

###### 4.4.5 - Federal Property Access (3/11)

Permission for access across federal land has been obtained by the DNR.

#### **5 - Operations**

##### 5.1 - Notification

###### 5.1.1 - Pre-sale Conference (10/25)

A pre-sale conference on site between the Purchaser and Sale Administrator is required prior to beginning any operations a Payment Unit to determine landing and road locations. The Unit Manager or his/her representative must be contacted at least 10 days in advance to schedule the conference.

###### 5.1.4 - Post-Sale Conference (10/16)

A post-sale conference on site between the Purchaser and sale administrator is required 3 days prior to the completion of active logging operations to determine clean-up and repair of landings, road edges, and the fulfillment of other contract specifications.

###### 5.1.6 - Utility R.O.W. (1/25)

It is the responsibility of the Purchaser to obtain permission from the utility company to utilize the power line right-of-way (R.O.W.) for operations. Contact Jake Lewis with Cloverland Electric at (906) 440-4022.

##### 5.2 - Conduct of Operations

###### 5.2.1 - Slash

###### 5.2.1.8 - Slash Height (12/08)

No slash or tree tops may exceed 24 inches in height.

## 5.2.2 - Hazard Trees/Snags

### 5.2.2.1 - Den Trees (10/16)

Obvious hollow and/or den trees shall be protected and left standing unless they are a safety hazard.

## 5.2.3 - Operating Restrictions

### 5.2.3.6 - Bark Beetle Restriction (1/25)

In the event drought creates a high risk of pine bark beetle infestation, pine is not to be cut during the period March 1 through July 1, unless all portions of trees greater than two (2) inches in diameter are removed from the Sale Area, reduced to chips, or treated to the satisfaction of the Unit Manager or his/her representative, within 15 days of being severed from the stump. Pine log decks, pulpwood piles and treetops that are piled for chipping in the fall or winter within a 1/4 mile of susceptible sites must be removed before March 15. Residual slash must not be placed in piles or rows and must be spread over the site for quick drying. The Department of Natural Resources will exercise this specification if the risk of damage warrants.

### 5.2.32 - Decking/Landing Restoration (9/13)

All decking and landing areas must have the surface area restored to a condition equal to or better than before. This is to ensure the proper regeneration of the stand. Wood debris, chips and "cookies" from trimmings must be removed or scattered away from landing and loading areas and may not be windrowed on the edge.

### 5.2.37 - No Decking Areas (12/08)

No decking is allowed within 70 feet of US-123 or S. Strongs Rd. Skidding is not permitted on these roads. No decking is allowed within 70 feet of USFS-Rd 3566 from December 1st-March 31st.

### 5.2.38 - No Decking Against Live Trees (2/04)

Cut products may not be decked against unmarked or designated leave trees.

### 5.2.39 - ORV Trail/Route Protection (4/18)

USFS roads 3561 and 3566 are ORV trails and are shown on the Timber Sale Map. Do not cut trees or damage posts with yellow/orange ORV markers. All stumps within five (5) feet of the trail must be cut flush with the ground. Maintain a 20-foot-wide slash, debris, and rut free zone daily using the ORV trail or route as the centerline. Skidding down or across the trail or route may only occur in locations approved by the Sale Administrator.

### 5.2.41 - Snowmobile Trail Protection (9/11)

USFS Rd 3566 is a snowmobile trail and is shown on the Timber Sale Map. Do not cut or damage posts with orange trail markers or traffic control signs. If the trail is used, it must be maintained and restored to a condition equal to or better than before the sale. The road maintenance/restoration must be done prior to December 1. If the trail road is to be used for hauling during the snowmobile season, then a snow-covered base must be left on the trail. The snowmobile trail may only be crossed at right angles. Maintain a 20-foot-wide slash, debris, and rut free zone daily using the snowmobile trail as the centerline. No decking of forest products will be permitted along the snowmobile trail during snowmobile season. In addition, any trees cut within five (5) feet of the trail must have the stumps removed and be disposed of according to the direction of the Unit Manager or his/her representative.

## 5.3 - Stream Protection

### 5.3.2 - Parking Equipment Near Water (10/23)

Within Payment Unit(s) the parking of or storage of equipment is prohibited within 100 feet of water bodies or ground water supplies. All equipment, when not in use for harvest operations, must be parked a minimum of 100 feet away from water sources (streams, rivers, lakes, ponds, vernal pools, ground water sources) and 50 feet away from slopes leading to water sources and/or riparian areas. This restriction is for preventing unforeseen oil and/or fluid leaks from contaminating water bodies and/or ground water supplies.

## 5.4 - Soil Protection

### 5.4.2 - Skid Trails (2/04)

Skid trails up and down slopes should be avoided. If, however, this is unavoidable, these trails will be left in a non-erodible condition using water bars, logs, and slash. Placing of slash on these skid trails while logging is ongoing may alleviate need for any further action. At the direction of the Sale Administrator, seed, fertilizer, and mulch may also be required.

## 5.6 - Debris and Waste Material

### 5.6.2 - GNA, Equipment Cleaning (4/24)

(a) Areas, known by the DNR prior to timber sale advertisement, that are infested with invasive species of concern are shown on the Timber Sale Map. A current list of invasive species of concern and a map showing the extent of known infestations is available from the DNR. For purposes of this provision, "Off-Road Equipment" includes all logging and construction machinery, except for log trucks, chip vans, service vehicles, water trucks, pickup trucks, cars, and similar vehicles.

(b) Purchaser shall adhere to the following requirements with regard to cleaning "Off-Road Equipment":

(i) Prior to moving Off-Road Equipment onto the Sale Area, Purchaser shall identify the location of the equipment's most recent operation. Purchaser shall not move any Off-Road Equipment that last operated in an area infested with one or more invasive species of concern onto Sale Area without having cleaned such equipment of seeds, soil, vegetative matter, and other debris that could contain or hold seeds, and having notified the DNR, as provided in (iii). If the location of prior operation cannot be identified, then Purchaser shall assume that the location is infested with invasive species of concern.

(ii) Prior to moving Off-Road Equipment from a cutting unit that is shown on the Timber Sale Map to be infested with invasive species of concern to, or through any other area that is shown as being free of invasive species of concern, or infested with a different invasive species, Purchaser shall clean such equipment of seeds, soil, vegetative matter, and other debris that could contain or hold seeds, and shall notify the DNR, as provided in (iii).

(iii) Prior to moving any Off-Road Equipment subject to the cleaning requirements set forth above, Purchaser shall advise DNR of its cleaning measures and make the equipment available for inspection. DNR shall have two (2) days, excluding weekends and State holidays, to inspect equipment after it has been made available. After satisfactory inspection or after such 2-day period, Purchaser may move the equipment as planned. Equipment shall be considered clean when a visual inspection does not disclose seeds, soil, vegetative matter, and other debris that could contain or hold seeds. Purchaser shall not be required to disassemble equipment unless so directed by the DNR after inspection.

(iv) If Purchaser desires to clean Off-Road Equipment on National Forest land, such as at the end of a project or prior to moving to, or through an area that is free of invasive species of concern, Purchaser shall obtain prior approval from the Unit Manager or his/her representative as to the location for such cleaning and measures, if any, for controlling impacts.

(v) Unit Manager or his/her representative may order delay, interruption, or modification of this Contract pursuant to Condition & Requirement 7.3 or 7.3.4.

(c) Nothing contained in this Condition & Requirement shall be interpreted as creating any warranty on the part of the DNR that all locations of invasive species of concern have been described herein, elsewhere in this Contract, or designated on the ground. Following sale advertisement, additional locations may be described or designated, and other species may be added to the list of invasive species of concern. In such event, the Unit Manager or his/her representative may order delay, interruption, or modification of this Contract pursuant to Condition & Requirement 7.3 or 7.3.4.

(d) The parties shall promptly communicate with one another with respect to description or designation of additional locations; discovery of locations of new species or new infestation; and, addition of species to the list of invasive species of concern.

## 5.8 - Protection of Endangered Species

### 5.8.4 - Red-shouldered Hawk or Goshawk (2) (8/25)

In the event that an active red-shouldered hawk or goshawk nest is found, the contract may be amended to protect the nest site until the nest is determined to be inactive. The value of the trees in this excluded area will be refunded or credited to the Purchaser. The nest will be buffered with a ten-chain radius (31 acre) protection area, centered on the nest tree, in which there will be no cutting or new roads constructed. Avoid human disturbance, including loading and skidding, in the protection area.

Within a one-half mile radius from the nest tree there shall be no harvest activities during the breeding period. For the northern goshawk, the restriction is from March 1 to July 31 (GNA). For the red-shouldered hawk, the restriction is from

April 1 to August 31.

For a nest to be considered inactive, it must be observed as inactive 2 years in a row by a wildlife biologist.

#### 5.8.5 - Protection of Raptor Nests (3/13)

All trees with raptor nests will be protected if found during harvesting operations. Notification will be made to the Unit Manager or his/her representative who will notify the Wildlife Biologist so an onsite evaluation and recommendation can be made, if necessary.

#### 5.8.9 - GNA, Bat Habitat and Roost Trees (7/25)

If bats are observed emerging from a tree prior to being felled, or if injured or dead bats are found after a tree is felled, notify the Unit Manager for coordination with Forest Service biologists. If the tree is determined to be a roost, the contract may be amended to include a no activity buffer (typically 150 feet radius around the roost tree or trees).

During operations if any sick, injured, and/or dead bats (regardless of species) are found in the Sale Area the Purchaser shall report its location to the Sale Administrator as soon as possible, but no more than 12 hours upon discovery.

## 6 - Safety and Fire Prevention

### 6.2 - Signing

#### 6.2.1 - Road Posting (10/20)

The Purchaser is responsible for posting and maintaining caution signs on USFS Rd(s) 3561 and 3566 off both US-123 and S Strongs Rd prior to beginning operations. The road must be posted at appropriate distances from the Sale Area to warn of logging activity and truck traffic. Signs must be removed when harvest operations are suspended or completed. The Purchaser will provide and maintain these signs.

#### 6.2.2 - Snowmobile Trail Posting (10/20)

The Purchaser is responsible for posting and maintaining caution signs on snowmobile trail 47 along USFS Rd 3566 prior to beginning operations during the snowmobile season (approximately December 1 to March 31). The trail must be posted to warn of logging activity and truck traffic. Signs must be removed when harvest operations are suspended or completed. The purchaser will provide and maintain these signs.

#### 6.2.3 - Recreational Trail Posting (10/20)

The Purchaser is responsible for posting and maintaining caution signs on ORV Routes along USFS Rd(s) 3566 and 3561. prior to beginning operations. The trail must be posted to warn of logging activity and truck traffic at both ends of the trail. Signs must be removed when harvest operations are suspended or completed. The purchaser will provide and maintain these signs.

## 7 - Other Conditions

### SKIP

#### 7.1.1 - GNA, Title (7/16)

General Condition & Requirement 7.1 is inapplicable. The following applies to this contract.

All right, title, and interest in and to any Included Timber shall remain in USDA Forest Service with the State of Michigan acting on behalf of the USDA Forest Service under this GNA contract, until it has been Measured, removed from Sale Area or other authorized cutting area, and paid for, at which time title shall vest in Purchaser. Title to any Included Timber that has been Measured and paid for, but not removed from Sale Area or other authorized cutting area by Purchaser on or prior to Termination Date, shall remain in USDA Forest Service.

### 7.3 - Contract Modifications

#### 7.3.4 - GNA, Contract Suspension and Modification (5/16)

(a) The Unit Manager may, by written order, delay or interrupt authorized operations under this contract or, notwithstanding Condition & Requirement 7.3, modify this contract, in whole or in part:

(i) To prevent environmental degradation or resource damage, including, but not limited to, harm to habitat, plants, animals, cultural resources, or cave resources;

(ii) To ensure consistency with land and resource management plans or other documents prepared pursuant to the National Environmental Policy Act of 1969, 42 USC 4321-4347;

(iii) To conduct environmental analysis, including, but not limited to, engaging in consultation pursuant to the Endangered Species Act of 1973, 16 USC 1531, et seq.; or

(iv) Upon agreement of the Forest Service, due to administrative appeal or litigation, regardless of whether the Unit Manager's order is required by a court order or this contract is named in such a proceeding.

(b) In the event of an order delaying or interrupting Purchaser's Operations under this Condition & Requirement, Purchaser's remedy shall be:

(i) a no cost contract extension,

(ii) reimbursement for Out-of-Pocket Expenses,

however, the foregoing remedies shall be available only to the extent that the Unit Manager's order was the sole and exclusive cause of the delay or interruption of Purchaser's operations.

(c) Remedies awarded to the Purchaser shall not be duplicative, and the Unit Manager shall have the right to structure remedies provided herein to avoid duplicative compensation.

(d) Purchaser agrees that this Condition & Requirement, and the remedies provided herein shall apply regardless of any finding by any court that the DNR failed to comply with any statute, regulation and/or policy in connection with awarding, advertising, or authorizing this sale, or a similar sale.

## 7.5 - Loss

### 7.5.2 - GNA, Liability for Loss (7/16)

If Included Timber is destroyed or damaged by an unexpected event that changes the nature of Included Timber, such as wind, flood, insects, disease, or similar cause, the Purchaser shall bear the timber value loss resulting from such destruction or damage.

Deterioration or loss of timber value due to delay or interruption under 7.3.4 - GNA, contract suspension and modification, shall be borne by the party holding title. In this event, Included Timber to which USDA Forest Service holds title, Purchaser of the State GNA contract will not be obligated to remove and pay for such timber. This Subsection shall not be construed to relieve either party of liability for negligence.

## 7.10 - Certified Timber

### 7.10.1 - Non-Certified Timber (2/16)

The area encompassed by this timber sale is not certified to the standards of the Forest Stewardship Council (FSC) or the Sustainable Forestry Initiative (SFI). Forest products from this sale may not be delivered to the mill as "FSC and / or SFI certified". The lands within this sale belong to the National Forest system and are being managed by the State as part of a Good Neighbor Authority (GNA) agreement.



### TIMBER SALE MAP

This information provided by authority of Part 525, 1994 PA 451, as amended.

Sale Number

**45-805-26**

Date

04/08/2026

Forest Management Unit

County

Mapped By: Gabler

Scale

Page

Of

Sault Ste Marie Mgt Unit

Chippewa

Cruised By: DNR

1:20,000

1

1

Township  
45N / 46N

Range  
05W / 06W

Section(s) and Subdivision(s) SESW; Sec. 6 NENW,S1/2NW,W1/2NE,N1/2SW,SWSW; Sec. 7 NWNW;  
Sec. 1 NW,NE,SW,SE; Sec. 12 N1/2NW,NWNE; Sec. 2 E1/2NE; Sec. 31 SESW,SWSE; Sec. 35 SESE; Sec. 36

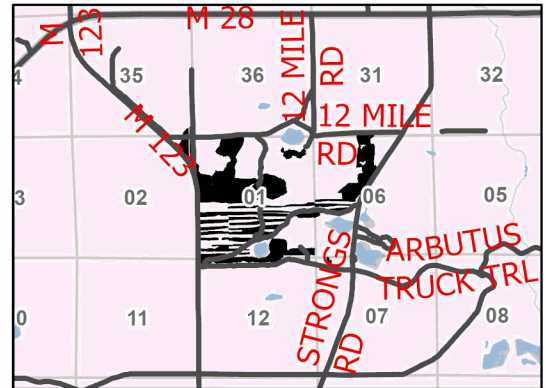
#### Cover Type

A = Aspen	J = Jack Pine	O = Oak	U = Upland Brush
B = Paper Birch	K = Rock	P = Lowland Poplar	UM = Upland Mix Forest
C = Cedar	L = Lowland Brush	Q = Mixed Swamp Conifer	V = Bog or Marsh
D = Treed Bog	LM = Lowland Mix Forest	R = Red Pine	W = White Pine
E = Swamp Hardwoods	M = Maple, Beech, Birch	S = Black Spruce	X = Non Stocked
F = Spruce/Fir	MC = Mixed Conifer	T = Tamarack	Y = Sand
G = Grass	MD = Mixed Deciduous	Z = Water	
H = Hemlock	N = Marsh		

#### Density

0 = Non Stocked	5 = Pole Timber Medium
1 = Seedling Sapling Poor	6 = Pole Timber Well
2 = Mixed Sapling Medium	7 = Saw Timber Poor
3 = Seedling Sapling Well	8 = Saw Timber Medium
4 = Pole Timber Poor	9 = Saw Timber Well

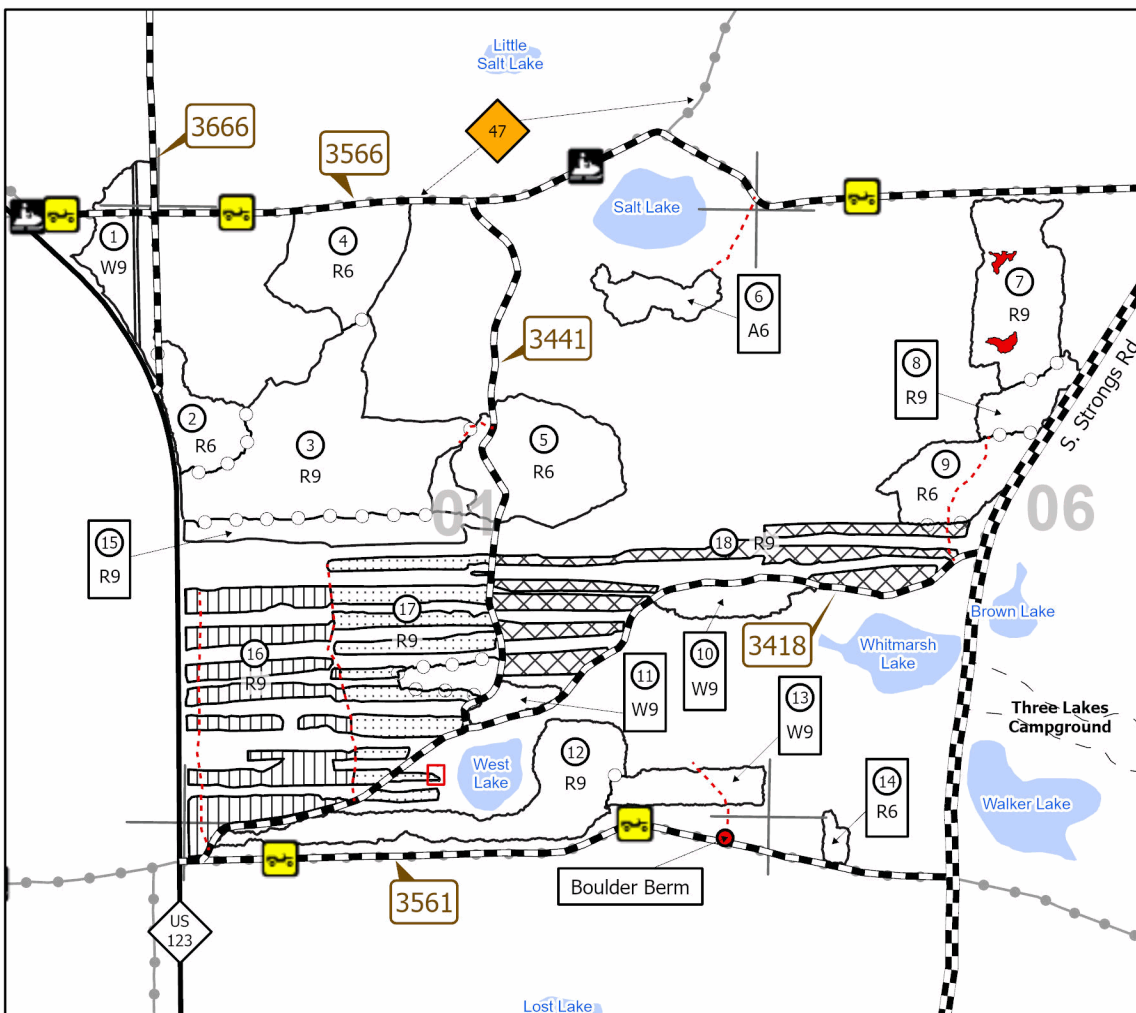
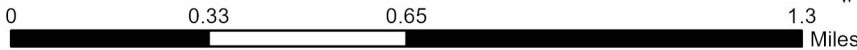
#### Locator Map 1:100,000



Payment Unit Number	Acres	Payment Unit Number	Acres	Payment Unit Number	Acres
1	15	7	24.2	13	9.2
2	11.2	8	7.5	14	1.8
3	51.1	9	15.7	15	13.1
4	21.2	10	8	16	36.2
5	29	11	8.5	17	28.1
6	7.7	12	28.5	18	31.5

## GNA2 Walleye

**347.5 Acres**



#### Legend

- Retention Area
- Payment Unit 16 (Unpainted)
- Payment Unit 17 (Unpainted)
- Payment Unit 18 (Unpainted)
- Special Protection Area
- Lakes and Rivers
- Against USFS (Orange)
- Payment Unit (Orange)
- US-123
- USFS Road - Open
- S. Strongs Rd
- Temporary Forest Access Routes
- Three Lakes Campground Access
- MIRIS Corners
- Boulder Berm
- Recreation Trails

Use QR Code to open Map in App





GNA2 Cork Hardwoods (45-803-26)  
T46N, R05W, SEC. 5; T46N, R05W, SEC. 6; T46N, R05W, SEC. 7; T46N, R05W,

In response to the notice of sale to be held 10:00 a.m. (local time) on May 11, 2026, I am hereby submitting my sealed bid (firm offer) for the following forest products to be cut. Bids for individual species must be at or above the advertised price. All non-responsive bid forms may be rejected.

<u>PRODUCTS &amp; SPECIES</u>	<u>ESTIMATED VOLUME*</u>	<u>ADVERTISED PRICE</u>	<u>BID PRICE/UNIT</u>
<b>Sawtimber</b>			
Black Cherry	2.8 MBF	\$ 84.00/MBF	\$ _____
Red Maple	22.3 MBF	\$ 81.00/MBF	\$ _____
Sugar Maple	114.2 MBF	\$ 293.00/MBF	\$ _____
<b>Pulpwood</b>			
Balsam Fir	50 Cords	\$ 8.45/Cord	\$ _____
Mixed Hardwood	3,717 Cords	\$ 14.55/Cord	\$ _____
White Spruce	74 Cords	\$ 9.60/Cord	\$ _____

\*The volumes are statistically estimated within plus (+) or minus (-) 11.52 percent at 95% confidence level. These estimated volumes are final and not subject to adjustment. Prospective bidders are urged to examine this timber and to make their own estimates of quantity and quality.

I understand that any or all bids may be rejected. All bids must be signed and all bid items must be bid or the bid form may be rejected. I also understand that consideration and awarding a contract will be based upon my past performance and ability to complete the contract based upon equipment and staffing subject to my control.

FEDERAL ID: \_\_\_\_\_ - \_\_\_\_\_ or SOCIAL SECURITY NUMBER: \_\_\_\_\_ - \_\_\_\_\_ - \_\_\_\_\_

Company or individual bidding: \_\_\_\_\_

Company representative's name: \_\_\_\_\_

Address: \_\_\_\_\_

City: \_\_\_\_\_ State: \_\_\_\_\_ Zip: \_\_\_\_\_

IF AVAILABLE, PLEASE PLACE THE PERSONALIZED LABEL FROM YOUR PROSPECTUS IN THE ABOVE BOX.

Individual or company representative's signature: \_\_\_\_\_ Date: \_\_\_\_\_

Phone number : \_\_\_\_\_ Email (optional): \_\_\_\_\_

**THE WINNING BIDDER MUST COMPLETE THE VERIFICATION OF WORKER'S DISABILITY COMPENSATION ACT COMPLIANCE (ON REVERSE SIDE IF DOUBLE SIDED) WITHIN 21 DAYS OF SALE AWARD DATE**



GNA2 Cork Pines (45-804-26)  
T46N, R05W, SEC. 7; T46N, R06W, SEC. 12; Chippewa COUNTY

In response to the notice of sale to be held 10:00 a.m. (local time) on May 11, 2026, I am hereby submitting my sealed bid (firm offer) for the following forest products to be cut. Bids for individual species must be at or above the advertised price. All non-responsive bid forms may be rejected.

<u>PRODUCTS &amp; SPECIES</u>	<u>ESTIMATED VOLUME*</u>	<u>ADVERTISED PRICE</u>	<u>BID PRICE/UNIT</u>
Sawtimber			
Sugar Maple	1.5 MBF	\$ 293.00/MBF	\$ _____
Pulpwood			
Balsam Fir	60 Cords	\$ 8.45/Cord	\$ _____
Jack Pine	50 Cords	\$ 20.00/Cord	\$ _____
Mixed Hardwood	722 Cords	\$ 14.55/Cord	\$ _____
Quaking Aspen	54 Cords	\$ 14.45/Cord	\$ _____
Red Pine	7,587 Cords	\$ 74.95/Cord	\$ _____
White Pine	29 Cords	\$ 14.15/Cord	\$ _____

\*The volumes are statistically estimated within plus (+) or minus (-) 6.02 percent at 95% confidence level. These estimated volumes are final and not subject to adjustment. Prospective bidders are urged to examine this timber and to make their own estimates of quantity and quality.

I understand that any or all bids may be rejected. All bids must be signed and all bid items must be bid or the bid form may be rejected. I also understand that consideration and awarding a contract will be based upon my past performance and ability to complete the contract based upon equipment and staffing subject to my control.

FEDERAL ID: \_\_\_\_\_ or SOCIAL SECURITY NUMBER: \_\_\_\_\_

Company or individual bidding: \_\_\_\_\_

Company representative's name: \_\_\_\_\_

Address: \_\_\_\_\_

City: \_\_\_\_\_ State: \_\_\_\_\_ Zip: \_\_\_\_\_

IF AVAILABLE, PLEASE PLACE THE PERSONALIZED LABEL FROM YOUR PROSPECTUS IN THE ABOVE BOX.

Individual or company representative's signature: \_\_\_\_\_ Date: \_\_\_\_\_

Phone number : \_\_\_\_\_ Email (optional): \_\_\_\_\_

**THE WINNING BIDDER MUST COMPLETE THE VERIFICATION OF WORKER'S DISABILITY COMPENSATION ACT COMPLIANCE (ON REVERSE SIDE IF DOUBLE SIDED) WITHIN 21 DAYS OF SALE AWARD DATE**



<b>FOR DEPARTMENT USE ONLY</b>	
Sale Number (XX - XXX - XX - XX)	
Forest Management Unit:	

## TIMBER SALE VERIFICATION OF WORKER'S DISABILITY COMPENSATION ACT COMPLIANCE

As required by Act 317, P.A. 1969 (Worker's Compensation) and  
Part 5 of Act 451 of 1994, as amended.

### VERIFICATION OF WORKER'S DISABILITY COMPENSATION ACT COMPLIANCE

- This verification must be completed and submitted within 21 days of contract award and prior to the issuance of the timber sale contract.
- In addition, if boxes 2B or 2C are checked, then Notice of Exclusion or Certificate of Insurance must be submitted within twenty-one (21) days of the contract award and prior to the issuance of the timber sale contract.
- All information must be typed or printed except for written signatures.

Please Check Appropriate Categories:

1. My business is organized as (you **must** check one of the boxes below):
  - A.  Sole Proprietorship (individual)
  - B.  Partnership
  - C.  Corporation
2. You **must** check one of the boxes below:
  - A.  I certify my business is a sole proprietorship and it has no employees but the sole proprietor. I am not subject to the Worker's Compensation Laws.
  - B.  I certify my business has satisfied its obligation to the Worker's Compensation Act through the use of an approved Notice of Exclusion (BWC-337, Rev. 5/96). I will provide a copy of the Notice of Exclusion within 21 days of the contract award. (For questions or a copy of the BWC-337, please call the Worker's Compensation Bureau at 517-322-1195).
  - C.  I certify my business has a Worker's Compensation Policy. I will provide an original Certificate of Insurance within twenty-one (21) days of the contract award.
3. If you have checked item 2(A) or 2(B), you **must** indicate the number of **both** full-time and part-time employees, other than yourself, including family members and active partners (if none, you must enter "0").

\_\_\_\_\_ Full-time Employees

\_\_\_\_\_ Part-time Employees

Name of Business		Federal ID (or) Social Security No.	
Address		Telephone (       )	
City	State	ZIP	

*I hereby certify that the above information is true and correct. I agree to notify the Michigan DNR of any changes that occur in factors affecting my coverage during any of my present and future operations.*

\_\_\_\_\_  
Signature of Owner or Authorized Representative

\_\_\_\_\_  
Title

\_\_\_\_\_  
Date

Please complete the "SEALED BID" information on the next page

GNA2 Walleye (45-805-26)

T45N, R05W, SEC. 6; T45N, R05W, SEC. 7; T45N, R06W, SEC. 1; T45N, R06W,

In response to the notice of sale to be held 10:00 a.m. (local time) on May 11, 2026, I am hereby submitting my sealed bid (firm offer) for the following forest products to be cut. Bids for individual species must be at or above the advertised price. All non-responsive bid forms may be rejected.

<u>PRODUCTS &amp; SPECIES</u>	<u>ESTIMATED VOLUME*</u>	<u>ADVERTISED PRICE</u>	<u>BID PRICE/UNIT</u>
Pulpwood			
Jack Pine	53 Cords	\$ 22.70/Cord	\$ _____
Mixed Aspen	292 Cords	\$ 16.40/Cord	\$ _____
Mixed Hardwood	2 Cords	\$ 16.50/Cord	\$ _____
Red Pine	4,034 Cords	\$ 84.95/Cord	\$ _____
White Pine	521 Cords	\$ 16.05/Cord	\$ _____

\*The volumes are statistically estimated within plus (+) or minus (-) 5.79 percent at 95% confidence level. These estimated volumes are final and not subject to adjustment. Prospective bidders are urged to examine this timber and to make their own estimates of quantity and quality.

I understand that any or all bids may be rejected. All bids must be signed and all bid items must be bid or the bid form may be rejected. I also understand that consideration and awarding a contract will be based upon my past performance and ability to complete the contract based upon equipment and staffing subject to my control.

FEDERAL ID: \_\_\_\_\_ - \_\_\_\_\_ or SOCIAL SECURITY NUMBER: \_\_\_\_\_ - \_\_\_\_\_ - \_\_\_\_\_

Company or individual bidding: \_\_\_\_\_

Company representative's name: \_\_\_\_\_

Address: \_\_\_\_\_

City: \_\_\_\_\_ State: \_\_\_\_\_ Zip: \_\_\_\_\_

IF AVAILABLE, PLEASE PLACE THE PERSONALIZED LABEL FROM YOUR PROSPECTUS IN THE ABOVE BOX.

Individual or company representative's signature: \_\_\_\_\_ Date: \_\_\_\_\_

Phone number : \_\_\_\_\_ Email (optional): \_\_\_\_\_

**THE WINNING BIDDER MUST COMPLETE THE VERIFICATION OF WORKER'S DISABILITY COMPENSATION ACT COMPLIANCE (ON REVERSE SIDE IF DOUBLE SIDED) WITHIN 21 DAYS OF SALE AWARD DATE**



FOR DEPARTMENT USE ONLY	
Sale Number (XX - XXX - XX - XX)	
Forest Management Unit:	

## TIMBER SALE VERIFICATION OF WORKER'S DISABILITY COMPENSATION ACT COMPLIANCE

As required by Act 317, P.A. 1969 (Worker's Compensation) and  
Part 5 of Act 451 of 1994, as amended.

### VERIFICATION OF WORKER'S DISABILITY COMPENSATION ACT COMPLIANCE

- This verification must be completed and submitted within 21 days of contract award and prior to the issuance of the timber sale contract.
- In addition, if boxes 2B or 2C are checked, then Notice of Exclusion or Certificate of Insurance must be submitted within twenty-one (21) days of the contract award and prior to the issuance of the timber sale contract.
- All information must be typed or printed except for written signatures.

Please Check Appropriate Categories:

1. My business is organized as (you **must** check one of the boxes below):
  - A.  Sole Proprietorship (individual)
  - B.  Partnership
  - C.  Corporation
2. You **must** check one of the boxes below:
  - A.  I certify my business is a sole proprietorship and it has no employees but the sole proprietor. I am not subject to the Worker's Compensation Laws.
  - B.  I certify my business has satisfied its obligation to the Worker's Compensation Act through the use of an approved Notice of Exclusion (BWC-337, Rev. 5/96). I will provide a copy of the Notice of Exclusion within 21 days of the contract award. (For questions or a copy of the BWC-337, please call the Worker's Compensation Bureau at 517-322-1195).
  - C.  I certify my business has a Worker's Compensation Policy. I will provide an original Certificate of Insurance within twenty-one (21) days of the contract award.
3. If you have checked item 2(A) or 2(B), you **must** indicate the number of **both** full-time and part-time employees, other than yourself, including family members and active partners (if none, you must enter "0").

\_\_\_\_\_ Full-time Employees

\_\_\_\_\_ Part-time Employees

Name of Business		Federal ID (or) Social Security No.	
Address		Telephone (       )	
City	State	ZIP	

*I hereby certify that the above information is true and correct. I agree to notify the Michigan DNR of any changes that occur in factors affecting my coverage during any of my present and future operations.*

\_\_\_\_\_  
Signature of Owner or Authorized Representative

\_\_\_\_\_  
Title

\_\_\_\_\_  
Date

Please complete the "SEALED BID" information on the next page