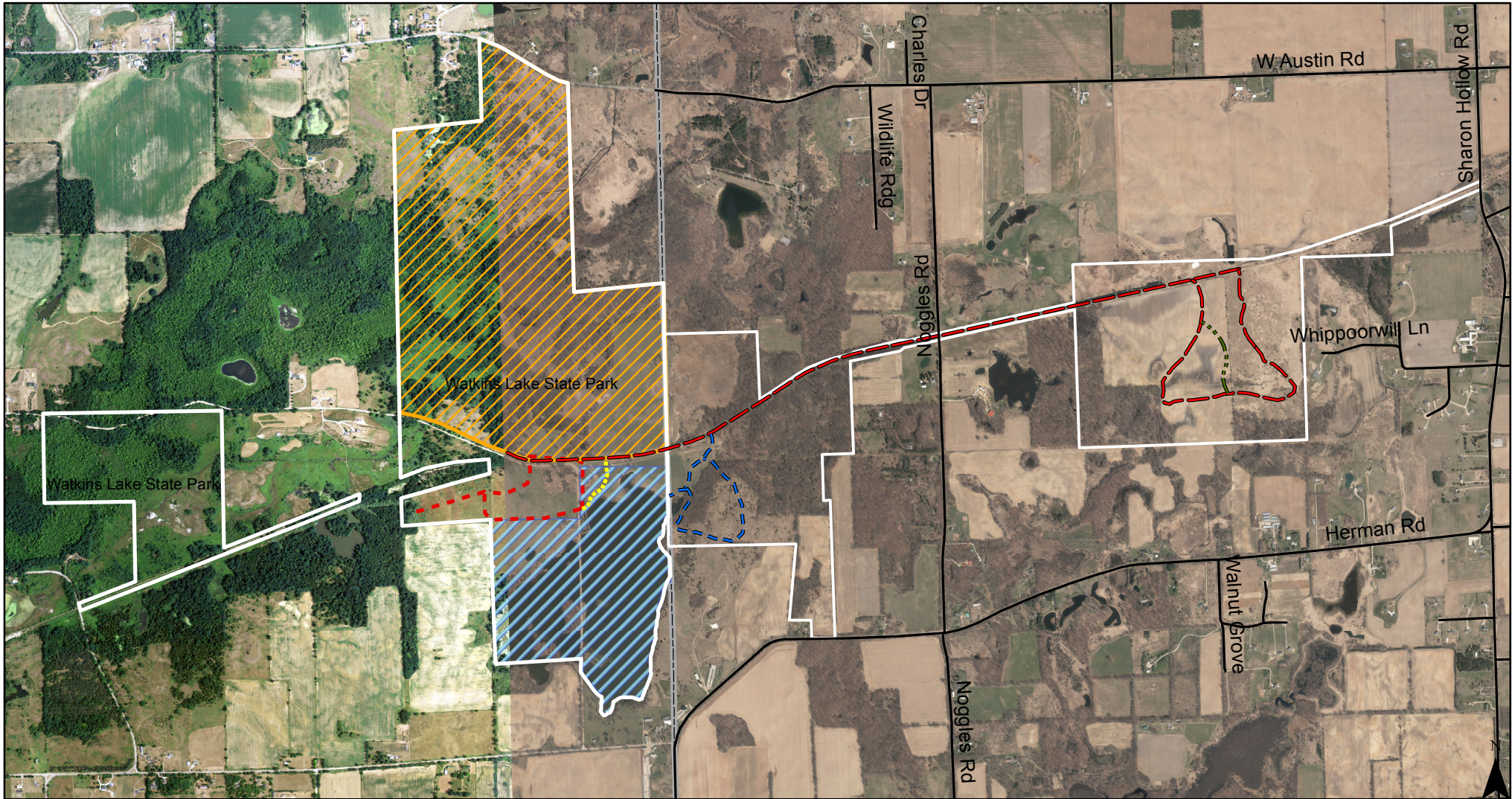


Watkins Lake State Park & County Preserve



0 0.25 0.5 1 Miles

Watkins Lake State Park & County Preserve (SP & CP) is collaborative effort between the Michigan Department of Natural Resources and Washtenaw County Parks and Recreation Commission.

In total, Watkins Lake SP&CP contains over 1,100 acres of forests, grasslands, wetlands, and open water in Jackson and Washtenaw counties.

Public Parking Available off Arnold Road

Legend

— Road Centerlines

Trails

--- Blue Trail

--- Green Trail

--- Red Trail

--- Yellow Trail

Open to Hunting

Waterfowl Refuge - No access Feb. 15th - May 15th and Sept. 1st - Jan. 1st