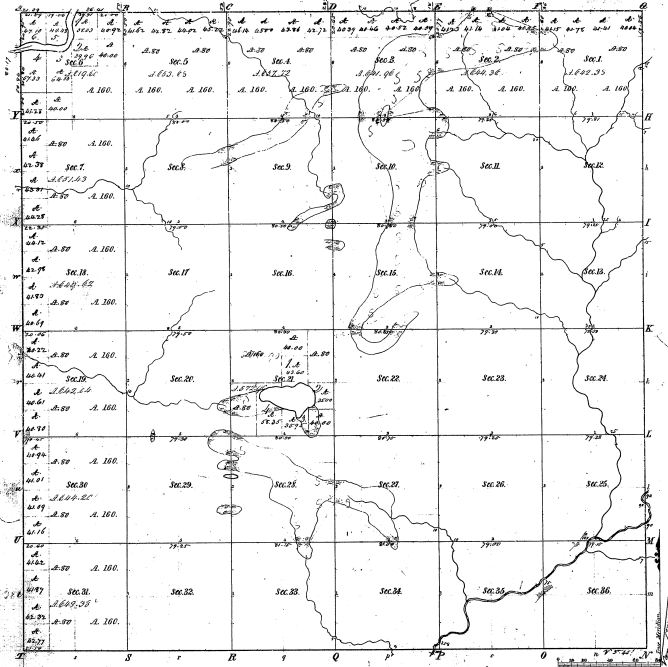


Township 1° 18' N., Range N° 10 West Mer. (Mich.)



Boundaries of Township 1° 18' N. of Range N° 10 West Mer. (Mich.)

Point	Course	Dist.	Point	Course	Dist.
1	S 21° 00'	1.50	2	S 10° 00'	1.50
2	S 10° 00'	1.50	3	S 79° 59'	1.50
3	S 79° 59'	1.50	4	S 79° 59'	1.50
4	S 79° 59'	1.50	5	S 79° 59'	1.50
5	S 79° 59'	1.50	6	S 79° 59'	1.50
6	S 79° 59'	1.50	7	S 79° 59'	1.50
7	S 79° 59'	1.50	8	S 79° 59'	1.50
8	S 79° 59'	1.50	9	S 79° 59'	1.50
9	S 79° 59'	1.50	10	S 79° 59'	1.50
10	S 79° 59'	1.50	11	S 79° 59'	1.50
11	S 79° 59'	1.50	12	S 79° 59'	1.50
12	S 79° 59'	1.50	13	S 79° 59'	1.50
13	S 79° 59'	1.50	14	S 79° 59'	1.50
14	S 79° 59'	1.50	15	S 79° 59'	1.50
15	S 79° 59'	1.50	16	S 79° 59'	1.50
16	S 79° 59'	1.50	17	S 79° 59'	1.50
17	S 79° 59'	1.50	18	S 79° 59'	1.50
18	S 79° 59'	1.50	19	S 79° 59'	1.50
19	S 79° 59'	1.50	20	S 79° 59'	1.50
20	S 79° 59'	1.50	21	S 79° 59'	1.50
21	S 79° 59'	1.50	22	S 79° 59'	1.50
22	S 79° 59'	1.50	23	S 79° 59'	1.50
23	S 79° 59'	1.50	24	S 79° 59'	1.50
24	S 79° 59'	1.50	25	S 79° 59'	1.50
25	S 79° 59'	1.50	26	S 79° 59'	1.50
26	S 79° 59'	1.50	27	S 79° 59'	1.50
27	S 79° 59'	1.50	28	S 79° 59'	1.50
28	S 79° 59'	1.50	29	S 79° 59'	1.50
29	S 79° 59'	1.50	30	S 79° 59'	1.50
30	S 79° 59'	1.50	31	S 79° 59'	1.50
31	S 79° 59'	1.50	32	S 79° 59'	1.50
32	S 79° 59'	1.50	33	S 79° 59'	1.50
33	S 79° 59'	1.50	34	S 79° 59'	1.50
34	S 79° 59'	1.50	35	S 79° 59'	1.50
35	S 79° 59'	1.50	36	S 79° 59'	1.50

11-50

11-30

Total number of Acres 35222.27

Township Lines	By Whom Surveyed	Date of Original	Amount of Survey	When Surveyed	Map Scale and Area
Subdivisions	A. B. Smith & J. D. Jones	1837	35222.27	1837	36" = 1 Mile

The above copy of Township 1° 18' North of Range N° 10 West of the Principal Meridian Michigan is hereby confirmed to the persons of the survey thereof in plain the official have been examined and approved.

W. B. ...

2000