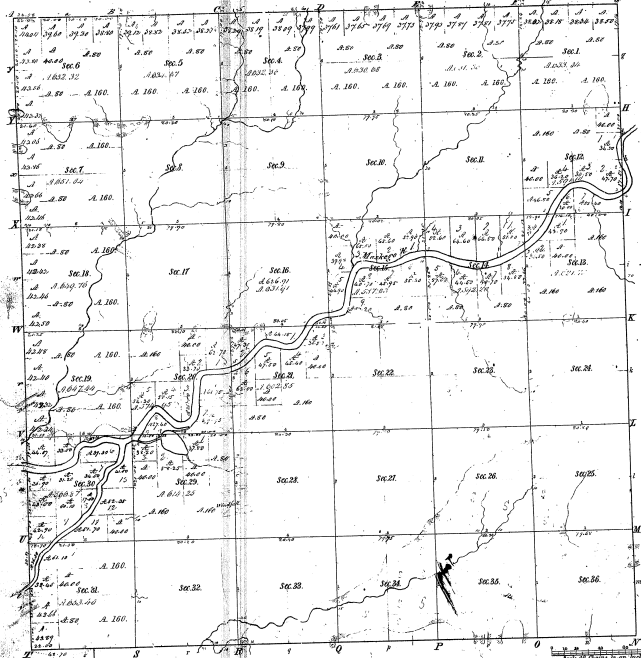


Township N^o 11 N., Range N^o 14 West Mer. (Mich.) 10-38



Post	Course	Dist	Post	Course	Dist	Post	Course	Dist
1	S 89° 59' E	100.00	2	S 89° 59' E	100.00	3	S 89° 59' E	100.00
2	S 89° 59' E	100.00	3	S 89° 59' E	100.00	4	S 89° 59' E	100.00
3	S 89° 59' E	100.00	4	S 89° 59' E	100.00	5	S 89° 59' E	100.00
4	S 89° 59' E	100.00	5	S 89° 59' E	100.00	6	S 89° 59' E	100.00
5	S 89° 59' E	100.00	6	S 89° 59' E	100.00	7	S 89° 59' E	100.00
6	S 89° 59' E	100.00	7	S 89° 59' E	100.00	8	S 89° 59' E	100.00
7	S 89° 59' E	100.00	8	S 89° 59' E	100.00	9	S 89° 59' E	100.00
8	S 89° 59' E	100.00	9	S 89° 59' E	100.00	10	S 89° 59' E	100.00
9	S 89° 59' E	100.00	10	S 89° 59' E	100.00	11	S 89° 59' E	100.00
10	S 89° 59' E	100.00	11	S 89° 59' E	100.00	12	S 89° 59' E	100.00
11	S 89° 59' E	100.00	12	S 89° 59' E	100.00	13	S 89° 59' E	100.00
12	S 89° 59' E	100.00	13	S 89° 59' E	100.00	14	S 89° 59' E	100.00
13	S 89° 59' E	100.00	14	S 89° 59' E	100.00	15	S 89° 59' E	100.00
14	S 89° 59' E	100.00	15	S 89° 59' E	100.00	16	S 89° 59' E	100.00
15	S 89° 59' E	100.00	16	S 89° 59' E	100.00	17	S 89° 59' E	100.00
16	S 89° 59' E	100.00	17	S 89° 59' E	100.00	18	S 89° 59' E	100.00
17	S 89° 59' E	100.00	18	S 89° 59' E	100.00	19	S 89° 59' E	100.00
18	S 89° 59' E	100.00	19	S 89° 59' E	100.00	20	S 89° 59' E	100.00
19	S 89° 59' E	100.00	20	S 89° 59' E	100.00	21	S 89° 59' E	100.00
20	S 89° 59' E	100.00	21	S 89° 59' E	100.00	22	S 89° 59' E	100.00
21	S 89° 59' E	100.00	22	S 89° 59' E	100.00	23	S 89° 59' E	100.00
22	S 89° 59' E	100.00	23	S 89° 59' E	100.00	24	S 89° 59' E	100.00
23	S 89° 59' E	100.00	24	S 89° 59' E	100.00	25	S 89° 59' E	100.00
24	S 89° 59' E	100.00	25	S 89° 59' E	100.00	26	S 89° 59' E	100.00
25	S 89° 59' E	100.00	26	S 89° 59' E	100.00	27	S 89° 59' E	100.00
26	S 89° 59' E	100.00	27	S 89° 59' E	100.00	28	S 89° 59' E	100.00
27	S 89° 59' E	100.00	28	S 89° 59' E	100.00	29	S 89° 59' E	100.00
28	S 89° 59' E	100.00	29	S 89° 59' E	100.00	30	S 89° 59' E	100.00
29	S 89° 59' E	100.00	30	S 89° 59' E	100.00	31	S 89° 59' E	100.00
30	S 89° 59' E	100.00	31	S 89° 59' E	100.00	32	S 89° 59' E	100.00
31	S 89° 59' E	100.00	32	S 89° 59' E	100.00	33	S 89° 59' E	100.00
32	S 89° 59' E	100.00	33	S 89° 59' E	100.00	34	S 89° 59' E	100.00
33	S 89° 59' E	100.00	34	S 89° 59' E	100.00	35	S 89° 59' E	100.00
34	S 89° 59' E	100.00	35	S 89° 59' E	100.00	36	S 89° 59' E	100.00

10-38

Total number of Acres 6210.23

Survey Designation	When Surveyed	Date of Condit.	Amount of Survey	When Surveyed	When Surveyed	When Surveyed
Township lines	1837	1837	36	1837	1837	1837
Section lines	1837	1837	36	1837	1837	1837

The above map of Township N^o 11 North, Range N^o 14 West, Mer. of the Michigan Territory, is hereby approved to the field notes of the survey on file in the office and has been examined and approved.

George Combs, U.S. Commissioner, Michigan, 1838