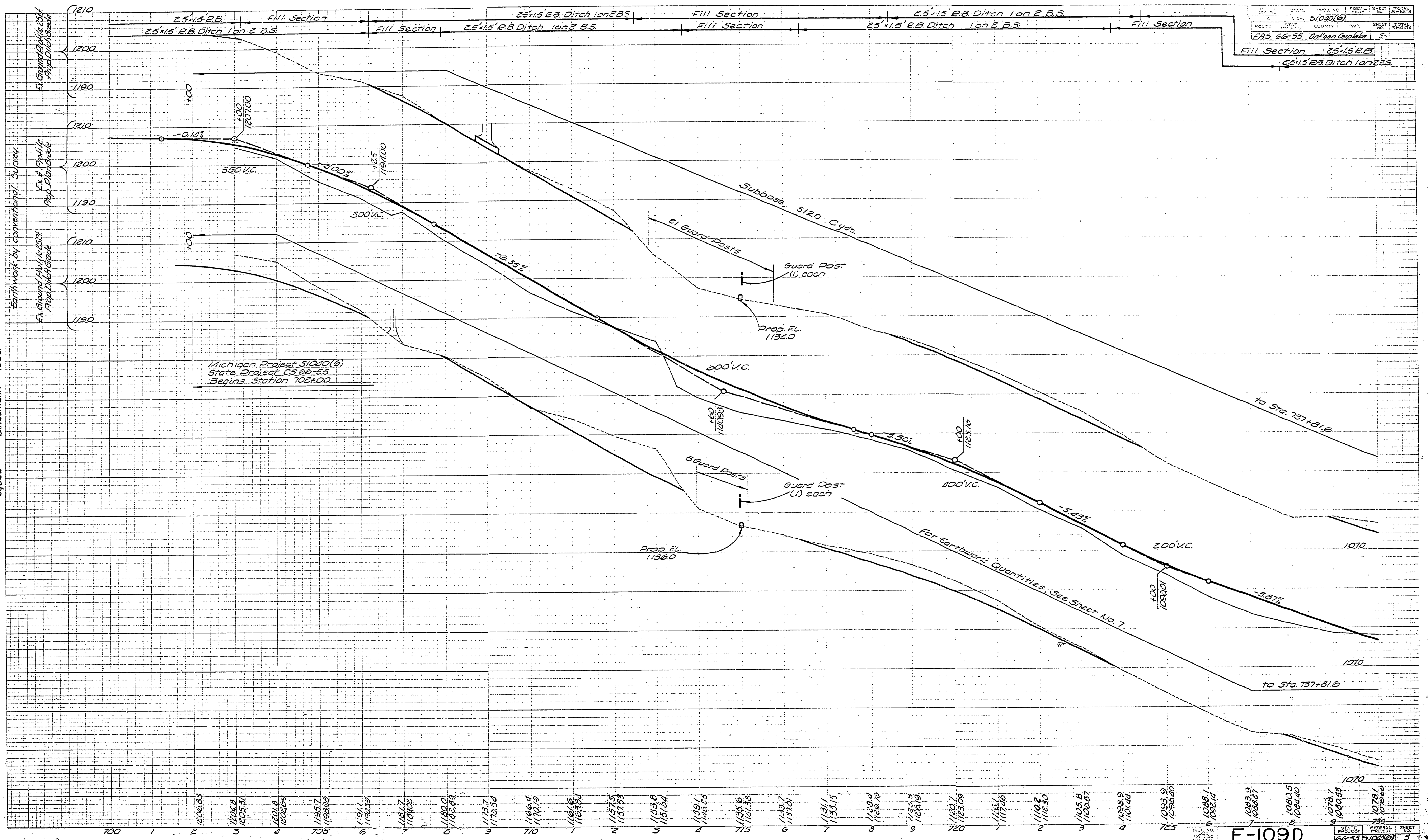


STATE	MICH.	FISCAL YEAR	51020(6)	SHEET NO.	5	TOTAL SHEETS	5
PROJECT	FAS 66-55 Ontonagon						
COUNTY	OSHTON	TWP.	OSHTON				
Fill Section 25'15" E.B.				25'15" E.B. Ditch 1 on 2 B.S.			



DATE 1-53
BY R. Kieraski
CHECKED L. E. Dole
Squad Bindermann 1963