

**SURVEY &  
REMONUMENTATION**

**MAR 03 1998 LAND CORNER RECORDATION CERTIFICATE**

Filing Requirement of Act 74, Mich. P.A. 1970

**RECORDED**

DEC 10 PM 3:56

For corners in

Dickinson SECTION Located In:

(County)

Corner Code #

Breitung Twp.

1. Public Land Survey	T	<u>39N</u>	R	<u>30W</u>	<u>E-2</u>
	T	___	R	___	<u>F-1</u>
	T	___	R	___	___
	T	___	R	___	___
2. Property Controlling in Section	S	___	T	___	___
	S	___	T	___	___
3. Miscellaneous Property in Section	S	___	T	___	___
	S	___	T	___	___

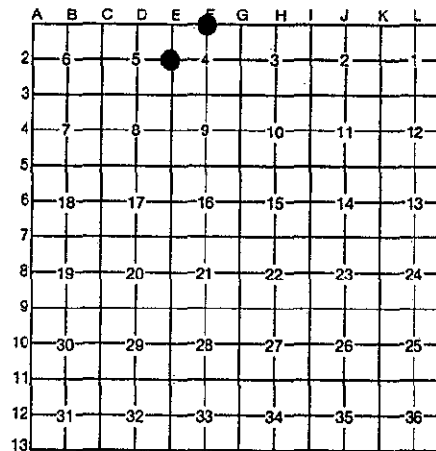
REGISTER OF DEEDS  
DICKINSON COUNTY  
RON MARRI 4011449001

Register of Deeds Stamp & File Number

4. Lot No. \_\_\_\_\_, Recorded Plat \_\_\_\_\_  
5. Private Claims \_\_\_\_\_

I, Robert F. Perkins, in a field survey on Sept. 30, 1997, do hereby certify that under requirements of P.A. 74, Michigan P.A. of 1970, the corner points mentioned in lines 1 and 2 above were in conformance with regulations and rules therefore as required in the current manual of survey instructions of the United States Department of the Interior, Bureau of Land Management or by a decree of a Court of Law and/or that the corner points mentioned in lines 3, 4 and 5 above were in conformance with the rules of the Michigan Board of Professional Surveyors or by a Decree of a Court of Law; established, re-established, monumented, re-monumented, recovered, found as expressed below:

**NOTE: Not more than 4 corners, all in the same town and range, may be recorded on this certificate.**



**A. Description of original monument and accessories and/or subsequent restoration:**

E-2 East 1/4 Corner, Section 5  
Post by James Mullett, D.S. 1849  
Original Bearing Trees  
Y.Pine 4" N28°E 8 Lks.  
Y.Pine 6" N48°W 14 Lks.

F-1 North 1/4 Corner, Section 4  
Post by H. Brevort, D.S. 1848  
Original Bearing Trees  
Aspen 5" N48°E 07 Lks.  
Birch 8" N53°W 04 Lks.

ACCEPTED BY THE DICKINSON COUNTY  
SURVEY PEER GROUP AS THE OFFICIAL  
CORNER UNDER MICHIGAN PUBLIC ACT  
345 OF 1990 AT A MEETING HELD ON

12-9-97

ROPER  
COUNTY REPRESENTATIVE

**B. Description of corner evidence found and/or method applied in restoring or reestablishing corner:**

E-2 No Evidence of Original Corner or Accessories Found.  
Found 4" Square Concrete Monument buried 6" in Road.  
3 Existing Bearing Trees with Blazed Lines running North and East. Corner used on numerous prior surveys.  
Corner Researched in 1996 Program.

F-1 No Evidence of Original Corner or Accessories found.  
Found 2 1/2" Iron Pipe projecting 6" out of Ground. Also two existing B.T.'s.  
This pipe is shown on M.D.O.T. Plans of U.S.-2 and has been accepted & used on numerous Prior Surveys.

**C. Description of monument for corner and accessories established to perpetuate locating the position of the corner:**

E-2 Accepted above described Monument as Best Available Evidence of Corner Location. Placed 2" Stamped Brass Disc over Pin in Monument.  
New Witnesses:  
R.Pine 24" N52°E (M.B.) 18.68' Ex. B.T.  
R.Pine 20" S17°E (M.B.) 38.35' Ex. B.T.  
R.Pine 18" S66°W (M.B.) 59.02' Ex. B.T.  
R.Pine 5" N10°E (M.B.) 25.04'

F-1 Accepted above described Pipe as Best Available Evidence of Corner Location.  
Placed 2 1/2" Stamped D.C. Remon. Corner inside of Existing Pipe.  
New Witnesses:  
Maple 8" N40°E (M.B.) 17.87' (Ex. B.T.)  
Oak 14" N48°E (M.B.) 19.05' (Ex. B.T.)  
R.Pine 3" S61°W (M.B.) 26.51' (Ex. B.T.)  
Ironwood 3" S83°W (M.B.) 26.51' (Ex. B.T.)  
Carsonite Marker

Signed by Robert F. Perkins

Date Nov. 21, 1997

Surveyor's Michigan License No. 12027

FORM APPROVED BY MICHIGAN STATE BOARD OF PROFESSIONAL SURVEYORS, JAN. 28, 1971  
REVISED BY 1975  
1983

