

MICHIGAN
DEPARTMENT OF CONSERVATION
FORESTRY DIVISION

LAND CORNER RECORD

T. 13 N.R. 28 W

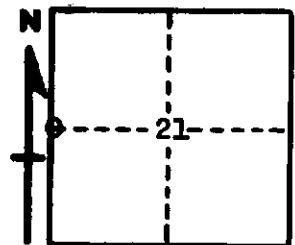
Dickinson COUNTY

DESCRIPTION OF CORNER 1/4 Corner between Sections 20-21

CORNER MONUMENT 1" Pipe with 1/4" Aluminum Cap

DATE MONUMENT PLACED AND WITNESSED 12-26-62

WITNESSES TO CORNER..... NBT's: 12" B. Ash (1/4 S NBT) N 37° W 57 links



CIRCLE CORNER REGISTERED

5" B. Ash (1/4 S NBT) N 62° E 93 links

AND

DESCRIPTION IN DETAIL AS TO HOW CORNER WAS LOCATED AND IDENTIFIED OR RESTORED.

This corner replaced from two W. Pine stump bottoms both badly burned, bearing N 11° W 72 links and N 31° E 67 links.

Corner lies on North bank of Ford River.

SURVEYOR'S SEAL

SIGNED Billy D. Buckler DATE 8-22-63
REGISTERED LAND SURVEYOR
Billy D. Buckler