

**SURVEY &
REMONUMENTATION**

MAY 22 2000

SECTION

LAND CORNER RECORDATION CERTIFICATE

Filing Requirement of Act 74, Mich. P.A. 1970

KENT COUNTY REMONUMENTATION

For corners in

<u>Kent</u> (County)	Located in: <u>Oakfield</u> Township	Corner Code # <u>G-8</u>
1. Public Land Survey	T <u>9N</u> R <u>9W</u>	<u> </u>
	T <u> </u> R <u> </u>	<u> </u>
	T <u> </u> R <u> </u>	<u> </u>
	T <u> </u> R <u> </u>	<u> </u>
2. Property Controlling in Section	S <u> </u> T <u> </u> R <u> </u>	<u> </u>
	S <u> </u> T <u> </u> R <u> </u>	<u> </u>
3. Miscellaneous Property in Sec.	S <u> </u> T <u> </u> R <u> </u>	<u> </u>
	S <u> </u> T <u> </u> R <u> </u>	<u> </u>

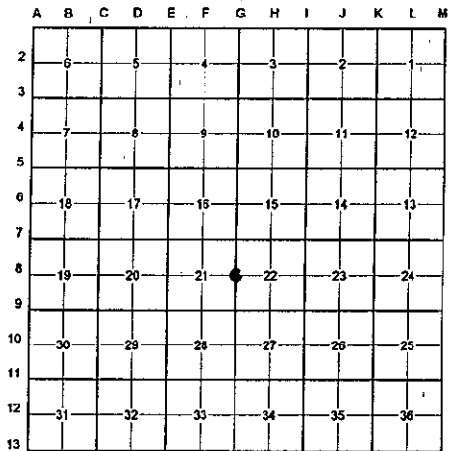
REG. OF DEEDS

11435

Register of Deeds Stamp & File Number

STATE OF MICHIGAN
COUNTY OF KENT
RECEIVED FOR RECORD
1999 OCT 27 AM 8:38

4. Lot No. _____, Recorded Plat _____
5. Private Claims _____



I, Randy Kolehouse, in a field survey on March 16 19 99, do hereby certify that under requirements of P.A. 74 Michigan P.A. of 1970, the corner points mentioned in lines 1 and 2 above were in conformance with regulations and rules therefore as required in the current manual of survey instructions of the United States Department of the interior, Bureau of Land Management or by a decree of a Court of Law and/or that the corner points mentioned in lines 3, 4 and 5 above were in conformance with the rules of the Michigan Board of Land Surveyors or by a Decree of a Court of Law; established, re-established, monumented, re-monumented, recovered, found as expressed below:

NOTE: Not more than 4 corners, all in the same town and range, may be recorded on this certificate.

A. Description of original monument and accessories and/or subsequent restoration:

G-8	1837	G.L.O. Notes	Cathcart	Set Post
	1940	Witness Map	K.C. Surveyor	Monument
	1974	L.C.R.C. #677	N/A	Monument
	1981	L.C.R.C. #1457	Williams & Works	Fnd. Conc. Mon. - Set K.C. Monument
	1989	L.C.R.C. #5212	John Bueche	K.C. Monument
	1997	L.C.R.C. #9684	Kirk Breitels	K.C. Monument

P.A. 345 1990 KENT COUNTY
PEER APPROVED 7/29/99
CHAIRMAN *[Signature]*

This corner was originally approved by the Kent County Remonumentation Peer Group and monumented by Williams & Works on 10/28/80 and was recorded per L.C.R.C. #1457

B. Description of corner evidence found and/or method applied in restoring or reestablishing corner:

G-8 Found a Standard Kent County Monument 5' ± South of the C/L of Elkins Street (gravel) running East and West, on a tree row running North and South, per L.C.R.C.'s #1457, #5212, and #9684 as set by Williams & Works in place of a concrete monument they found which checked L.C.R.C. #677 and the K.C. Surveyor's records.

L.C.R.C. #1457

- Nail & K.C. Remon. Tag in W. Side 28" Maple S 45°W 30.18'
- Nail & K.C. Remon. Tag in SE Side 14" Wild Cherry S 70°W 64.58'
- Nail & K.C. Remon. Tag in S. Side 28" Hickory N 65°W 88.48'
- Nail & K.C. Remon. Tag in E. Side 34" Oak N 20°E 26.02'
- C/L Gravel Rd. N-S', on Tree Line N&S

L.C.R.C. #9684

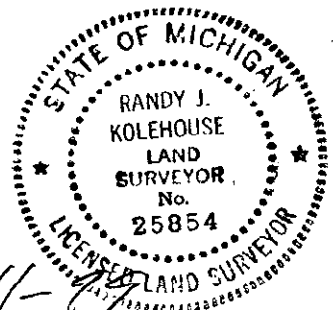
- Nail & KC Remon. tag W. side 34" Maple S45°W 30.06' (m. 30.02')
- Nail & KC Remon. tag SE side 22" Cherry S70°W 64.45' (m. 64.39')
- Nail & KC Remon. tag S. side 34" Hickory N65°W 88.43' (m. 88.42')
- Nail & KC Remon. tag E. side 42" Oak N20°E 26.00' (m. 25.98')
- C/L Gravel Rd. N-S', on tree line N-S

The selected location is accepted by me and is generally accepted by professional surveyors as the best available evidence of the position of the original corner.

C. Description of monument for corner and accessories established to perpetuate locating the position of the corner:

G-8 Standard Kent County Monument

- Nail & K.C. remon. tag on W side 34" Maple S 45° W 30.02'
- Nail & K.C. remon. tag on SE side 22" Cherry S 70° W 64.39'
- Nail & K.C. remon. tag on S side 34" Hickory N 65° W 88.42'
- Nail & K.C. remon. tag on E side 42" Oak N 20° E 25.98'
- Nail & K.C. remon. tag on N side 8" Elm S 80° E 58.93'
- C/L of gravel road running E-W, North 5' ±
- On tree row running N-S



Signed by *Randy J. Kolehouse* Date 10-11-99
WILLIAMS & WORKS

Surveyor's Michigan License No. 25854