

OCT 28 1994

COMMISSION

KENT COUNTY REMONUMENTATION
COURTLAND TWP.
LAND CORNER RECORDATION CERTIFICATE
Filing Requirement of Act 74, Mich. P.A. 1970

STATE OF MICHIGAN
COUNTY OF KENT
RECEIVED FOR RECORD

94 JUL -5 PM 3:12

For corners in
KENT COUNTY
(County)

Located In:

Corner Code #/

- | | | |
|------------------------------------|-------------------------|-----------------|
| 1. Public Land Survey | T 9N R 10W | F-10 C 1/4 cor. |
| | T _____ R _____ | Sec. 28 |
| | T _____ R _____ | _____ |
| | T _____ R _____ | _____ |
| 2. Property Controlling in Section | S _____ T _____ R _____ | _____ |
| | S _____ T _____ R _____ | _____ |
| 3. Miscellaneous Property in Sec. | S _____ T _____ R _____ | _____ |
| | S _____ T _____ R _____ | _____ |

W. R. Byl
REG. OF DEEDS

6960

Register of Deeds Stamp & File Number

4. Lot No. _____, Recorded Plat _____
5. Private Claims _____

	A	B	C	D	E	F	G	H	I	J	K	L	M
2	6	5	4	3	2	1							
3													
4	7	8	9	10	11	12							
5													
6	16	17	16	15	14	13							
7													
8	19	20	21	22	23	24							
9													
10	30	29	28	27	26	25							
11													
12	31	32	33	34	35	36							
13													

I, William R. Byl, in a field survey on Feb. 8, 19 94, do hereby certify that under requirements of P.A. 74, Michigan P.A. of 1970, the corner points mentioned in lines 1 and 2 above were in conformance with regulations and rules therefore as required in the current manual of survey instructions of the United States Department of the Interior, Bureau of Land Management or by a decree of a Court of Law and/or that the corner points mentioned in lines 3, 4 and 5 above were in conformance with the rules of the Michigan Board of Land Surveyors or by a Decree of a Court of Law; established, re-established, monumented, re-monumented, recovered, found as expressed below:

NOTE: Not more than 4 corners, all in the same town and range, may be recorded on this certificate.

A. Description of original monument and accessories and/or subsequent restoration:

- F-10 Capped Iron at intersection of 1/4 lines (LCRC #4547, Feb. 12, 1988)
Set Nail in 32" Oak N45°E 5.3'
Set Nail in 5" Cherry West 9.64'
Set Nail in 6" Pine South 37.7'

B. Description of corner evidence found and/or method applied in restoring or reestablishing corner:

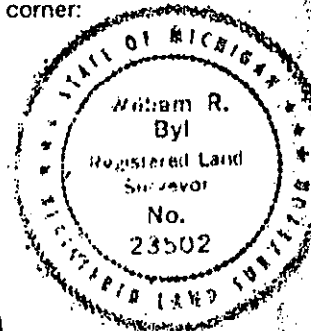
- F-10 Found Capped Iron 0.23' S. & 0.25' W. of intersection of 1/4 lines (using E 1/4 computed by single proportionate measure).
Fd. Nail NW side 32" Oak N45°E 5.17'
Fd. Nail S. side 5" Cherry S90°W 9.68'
Fd. Nail W. side 6" Pine S05°E 37.96'

See sketch reverse side corner "C"

P.A. 345 1990 KENT COUNTY
PEER APPROVED 3/24/94
CHAIRMAN *Harry Huber*

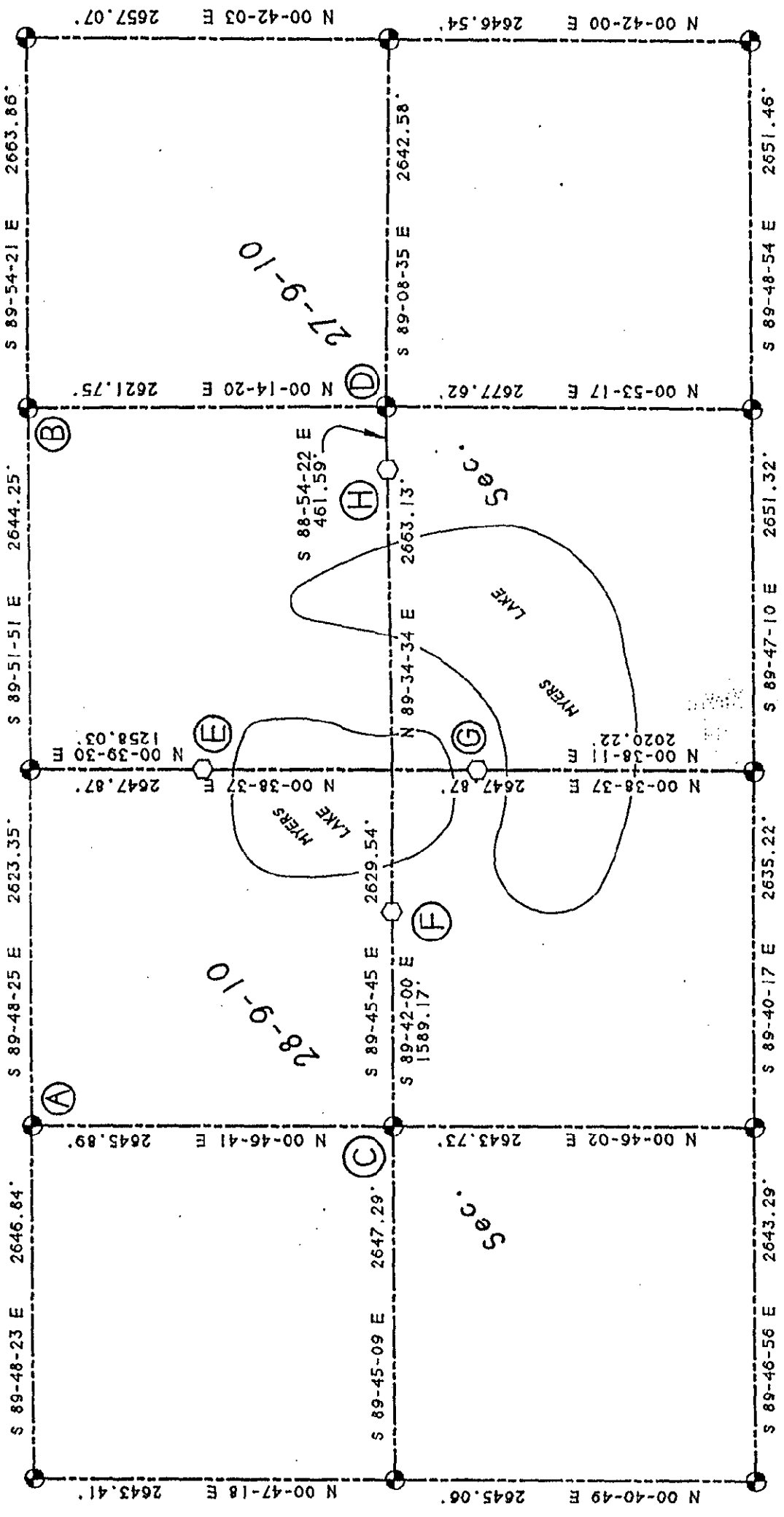
C. Description of monument for corner and accessories established to perpetuate locating the position of the corner:

- F-10 Replaced capped iron with Standard Kent County Monument
Set Nail & KC Remon. tag NW side 32" Oak N45°E 5.17'
Set Nail & KC Remon. tag W. side 6" Pine S05°E 37.96'
Set Nail & KC Remon. tag S. side 24" Oak S90°W 26.41'
Set Nail & KC Remon. tag NE side 6" Oak N30°W 32.15'



Signed by *W. R. Byl*
Surveyor's Michigan License No. 23502

Date 06.17.94



SECTION 27 & 28, TOWN 9 NORTH, RANGE 10 WEST
 COURTLAND TWP., KENT COUNTY, MICHIGAN.

PREPARED BY:
 WILLIAM R. BYL, INC.
 REGISTERED LAND SURVEYORS
 1549 KALAMAZOO SE
 GRAND RAPIDS, MI. 49507

SCALE: 1" = 1000'
 ● - KENT COUNTY MONUMENT
 ○ - KENT COUNTY REFERENCE MONUMENT
 BEARING DATUM PER SOLAR OBSERVATION

