

SURVEY & REMONUMENTATION

RECORDED

DEC 01 1993

OTTAWA COUNTY REMONUMENTATION
LAND CORNER RECORDATION CERTIFICATE
 Filing Requirement of Act 74, Mich. P.A. 1970

93 NOV 11 AM 11:54

COMMISSION

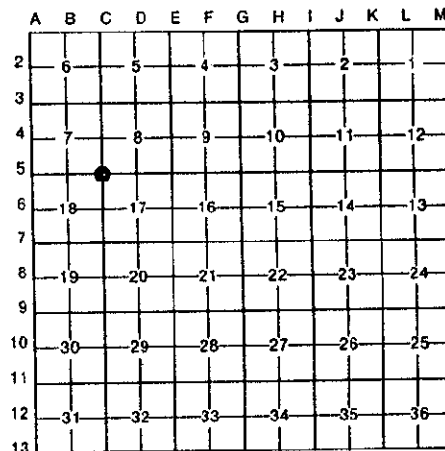
Joseph A. Rothman
 REGISTER OF DEEDS
 OTTAWA COUNTY, MI

For corners in

Ottawa (County)	Located In:	Corner Code #
1. Public Land Survey	T <u>8N</u> R <u>13W</u>	<u>C-5 (NW, 17)</u>
	T _____ R _____	<u>Wright Twp.</u>
	T _____ R _____	_____
	T _____ R _____	_____
2. Property Controlling in Section	S _____ T _____ R _____	_____
	S _____ T _____ R _____	_____
3. Miscellaneous Property in Sec.	S _____ T _____ R _____	_____
	S _____ T _____ R _____	_____

Register of Deeds Stamp & File Number

4. Lot No. _____, Recorded Plat _____
 5. Private Claims _____



I, Donald W. Schiele, in a field survey on November 6, 19 93, do hereby certify that under requirements of P.A. 74, Michigan P.A. of 1970, the corner points mentioned in lines 1 and 2 above were in conformance with regulations and rules therefore as required in the current manual of survey instructions of the United States Department of the Interior, Bureau of Land Management or by a decree of a Court of Law and/or that the corner points mentioned in lines 3, 4 and 5 above were in conformance with the rules of the Michigan Board of Land Surveyors or by a Decree of a Court of Law; established, re-established, monumented, re-monumented, recovered, found as expressed below:

NOTE: Not more than 4 corners, all in the same town and range, may be recorded on this certificate.

A. Description of original monument and accessories and/or subsequent restoration:

C-5 corner common to Sections 7, 8, 17 and 18, Wright Twp.
 L.C.R.C. recorded in Liber 3, Page 64, 3-29-76.
 C.I.M.
 Power Pole SE 80.20'
 Power Pole SW 44.81'
 36" Willow NW 56.60'

B. Description of corner evidence found and/or method applied in restoring or reestablishing corner:

C-5 Found Cast Iron Monument inscribed "Ottawa County Section Corner" in Monument Box and accepted as a careful and faithful perpetuation of the position of the original corner.

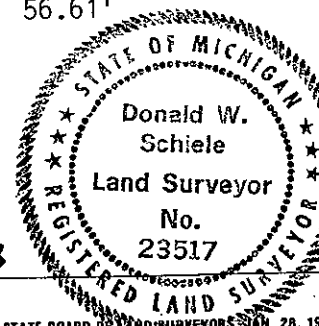
Found bent nail in NW side of Power Pole	SE	79.80'
Found PK nail and bent nail in NE side of Power Pole	SE	80.04'
Found PK nail and nail in NW side of Power Pole	SW	44.78'
Found double-headed nail and washer in NE side of 52" Willow	NW	56.62'

C. Description of monument for corner and accessories established to perpetuate locating the position of the corner:

C-5 C.I.M. inscribed "Ottawa County Section Corner" 3" below surface in Monument Box.

Set Ottawa County Remon Tag & nail in NW side of 16" Basswood	N37°E	64.36'
Set Ottawa County Remon Tag & nail in NE side of Power Pole	S61°E	80.05'
Set Ottawa County Remon Tag & nail in NW side of Power Pole	S51°W	44.77'
Set Ottawa County Remon Tag & nail in NE side of 52" Willow	N50°W	56.61'

Centerline North & South asphalt road, 1' East
 Centerline gravel road to East, 1' South
 Occupation line to West, 2'± North



Signed by Donald W. Schiele Date Nov. 8, 1993
 Surveyor's Michigan License No. 23517

FORM APPROVED BY MICHIGAN STATE BOARD OF LAND SURVEYORS JAN. 28, 19
 REVISED MAY 14, 19
 REVISED JAN., 19