

JEC 05 2000

OTTAWA COUNTY REMONUMENTATION  
**LAND CORNER RECORDATION CERTIFICATE**  
 Filing Requirement of Act 74, Mich. P.A. 1970

SECTION  
 RECORDED

95 NOV 29 PM 1:33

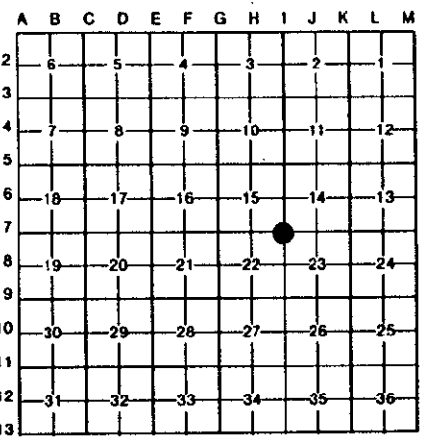
*Richard Williams*  
 REGISTER OF DEEDS  
 OTTAWA COUNTY, MI

For corners in

<u>Ottawa</u> <small>(County)</small>	Located In:	Corner Code #
1. Public Land Survey	T <u>8N</u> R <u>16W</u>	<u>I-7, SW Corner</u> <u>Section 14</u> <u>Spring Lake Twp</u>
	T _____ R _____	_____
	T _____ R _____	_____
	T _____ R _____	_____
2. Property Controlling in Section	S _____ T _____ R _____	_____
	S _____ T _____ R _____	_____
3. Miscellaneous Property in Sec.	S _____ T _____ R _____	_____
	S _____ T _____ R _____	_____

Register of Deeds Stamp & File Number

4. Lot No. \_\_\_\_\_, Recorded Plat \_\_\_\_\_  
 5. Private Claims \_\_\_\_\_



I, Thomas E. Joiner, in a field survey on 11-7-, 19 95, do hereby certify that under requirements of P.A. 74, Michigan P.A. of 1970, the corner points mentioned in lines 1 and 2 above were in conformance with regulations and rules therefore as required in the current manual of survey instructions of the United States Department of the Interior, Bureau of Land Management or by a decree of a Court of Law and/or that the corner points mentioned in lines 3, 4 and 5 above were in conformance with the rules of the Michigan Board of Land Surveyors or by a Decree of a Court of Law; established, re-established, monumented, re-monumented, recovered, found as expressed below:

**NOTE: Not more than 4 corners, all in the same town and range, may be recorded on this certificate.**

A. Description of original monument and accessories and/or subsequent restoration:

05-29-1837	Liber 1, Page 499 07-06-72	Liber 3, Page 195 09-23-77
Post Set By J. Mullett	Found Steel Bar	Found Steel Bar
S 54°E 60 24" Oak	SW 40.25 28" Maple	Set Cast Iron Monument
S 34°W 18 30" Pine	NE 43.45 20" Maple	ESE 74.44 Power Pole
	NW 32.83 Power Pole	ESE 35.90 4" Blue Spruce
	SE 89.47 NW House Corner	ENE 4.35 16" Oak
	NE 90.24 SW Cor, Porch House #226	WSW 39.75 8" Catalpa

B. Description of corner evidence found and/or method applied in restoring or reestablishing corner:

Found P.K. Nail and accepted as a careful and faithful perpetuation of the position of the original corner. (P.K. Nail is 0.20 From Manhole)

Liber 1, Page 499 07-06-72  
 SE 89.47 NW Cor. House  
 NE 90.24 SW Cor. House

P.A. 345 OTTAWA COUNTY

PEER APPROVED 11/20/95

*Richard P. Newell*

C. Description of monument for corner and accessories established to perpetuate locating the position of the corner:

Found P.K. Nail- Remon marker not set due to closeness of manhole		
O.C. Remon Tag & Nail in NE side 17" Maple	AZ 330°	51.12
O.C. Remon Tag & Nail in SE side 22" Maple	AZ 240°	53.25
NW Corner Block Foundation House #300	AZ 125°	89.47
SW Corner Block Foundation House #226	AZ 59°	90.24



Signed by Thomas E. Joiner Date 11-16-95  
 Surveyor's Michigan License No. 18435