

LAND CORNER RECORDATION CERTIFICATE
Filing Requirement of Act 74, Mich. P.A. 1970
Ontonagon County Remonumentation Corner

of 1 LC 5722

REC. Date 09/09/99 Time 15:39
RECORDING FEE: 9.00

For corners in

Table with columns: Ontonagon County, Located in:, Corner Code #. Rows include Public Land Survey, Property Controlling in Section, Miscellaneous Property in Sec., Lot No., and Private Claims.

SURVEY & REMONUMENTATION

MAR 23 2000

SECTION

Register of Deeds Stamp & File Number

Grid table with columns A-L and rows 1-13. A dot is marked in cell C5.

I, Joseph C. Domitrovich, in a field survey on August 23, 1999, do hereby state that under requirements of P.A. 74, Michigan P.A. of 1970, the corner points mentioned in lines 1 and 2 above were in conformance with regulations and rules therefore as required in the current manual of survey instructions of the United States Department of the Interior, Bureau of Land Management or by a decree of a Court of Law and/or that the corner points mentioned in lines 3, 4 and 5 above were in conformance with the rules of the Michigan Board of Land Surveyors or by a Decree of a Court of Law; established, re-established, monumented, recovered, found as expressed below:

NOTE: Not more than 2 corners, all in the same town and range, may be recorded on this certificate.

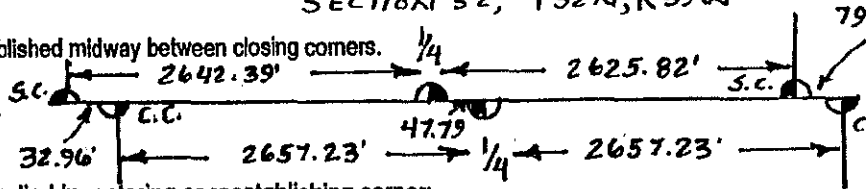
A. Description of original monument and accessories and/or subsequent restoration: (D-1) - North 1/4 Corner Section 5, T51N, R39W (Not Common with 1/4 Corner to the North)

Not to Scale

SECTION 32, T52N, R39W

This corner was not set in the Original Survey but was established midway between closing corners.

I found no evidence of subsequent restoration of this corner.



B. Description of corner evidence found and/or method applied in restoring or reestablishing corner:

SECTION 5 T51N, R39W

I reestablished this corner midway between the Closing Corners East and West and on line between Standard Corners East and West. This places the corner 47.79' East of the South 1/4 corner of Section 32, T52N, R39W. It also falls 48' +/- East of remains of a fenceline to the south. (It appears that residents have erroneously been using the South 1/4 corner of Section 32, T52N, R39W as a common 1/4 corner.)

Research on file with County Remonumentation Representative.

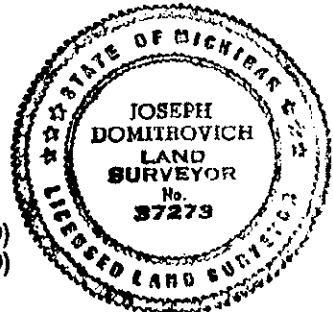
DEED GROUP APPROVED
Earl W. Applekamp
COUNTY REGISTER
8-24-99

C. Description of monument for corner and accessories established to perpetuate locating the position of the corner:

Corner is a 2 1/2" x 30" aluminum pipe with a 3" diameter aluminum cap stamped to read: COUNTY REMONUMENTATION; T51N, R39W; 1/4 S.5; 1999; P.S. 37273. Corner falls on the Southerly Edge of a snowmobile trail.

Ties:

Table listing witness objects and distances: 5" White Birch (N 08° W, 44.46'), 8" Poplar (S 62° E, 51.18'), 3" White Birch (S 12° E, 35.40'), Steel Sign Rail (South, 2.25' (to face)), S. 1/4 Cor. Sec. 32, (T52N, R39W) (N 89°40'21"W, 47.79'), NE Cor. Sec. 5 (Closing Corner) (East (along standard line), 2657.23' (2644.62' calculated from GLO)), NW Cor. Sec. 5 (Closing Corner) (West (along standard line), 2657.23' (2644.62' calculated from GLO))



NOTE: Bearings to witness objects are magnetic. Distances are to a nail in side of the witness object unless noted.

Signed by [Signature]

Date 8/24/99

Surveyor's Michigan License No. 37273